



SAN DIEGO COUNTY INFLUENZA SURVEILLANCE

2018-19 SEASON SUMMARY



2018-19 Influenza Season Summary



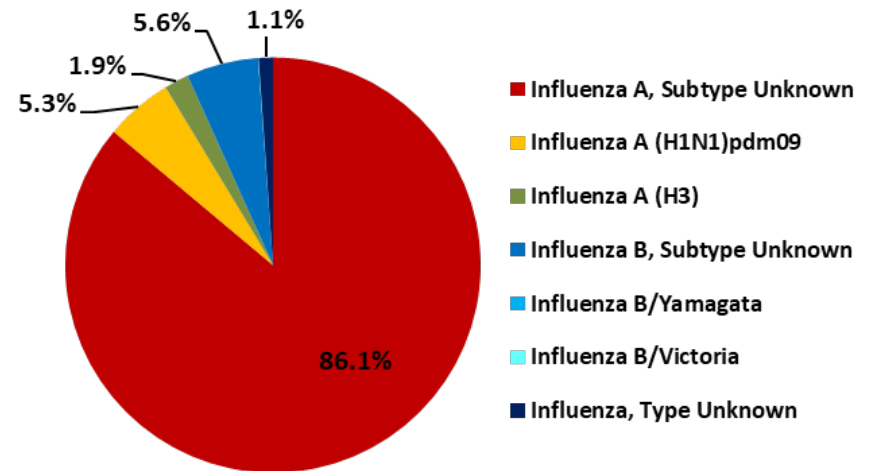
TOTAL REPORTED INFLUENZA CASES

9,655

77 Flu Deaths

3 Pediatric Deaths

25 Outbreaks



2018-19 Influenza Season Summary



Table 1. Influenza Surveillance Indicators

Surveillance Indicator	2018-19 Season	2017-18 Season	Prior 3- Season Average*
All influenza cases reported (rapid or PCR test)	9,655	20,854	11,313
Number of influenza-related outbreaks reported	25	119	56
Number of influenza-related deaths reported	77	343	166

Influenza season is July 1 - June 30, Weeks 27-26. Total deaths reported in prior seasons: 343 in 2017-18, 87 in 2016-17, and 68 in 2015-16.

* Includes FYs 2015-16, 2016-17, and 2017-18.

2018-19 Influenza Season Summary



Table 2. Influenza Cases Reported, 2018-19 Season

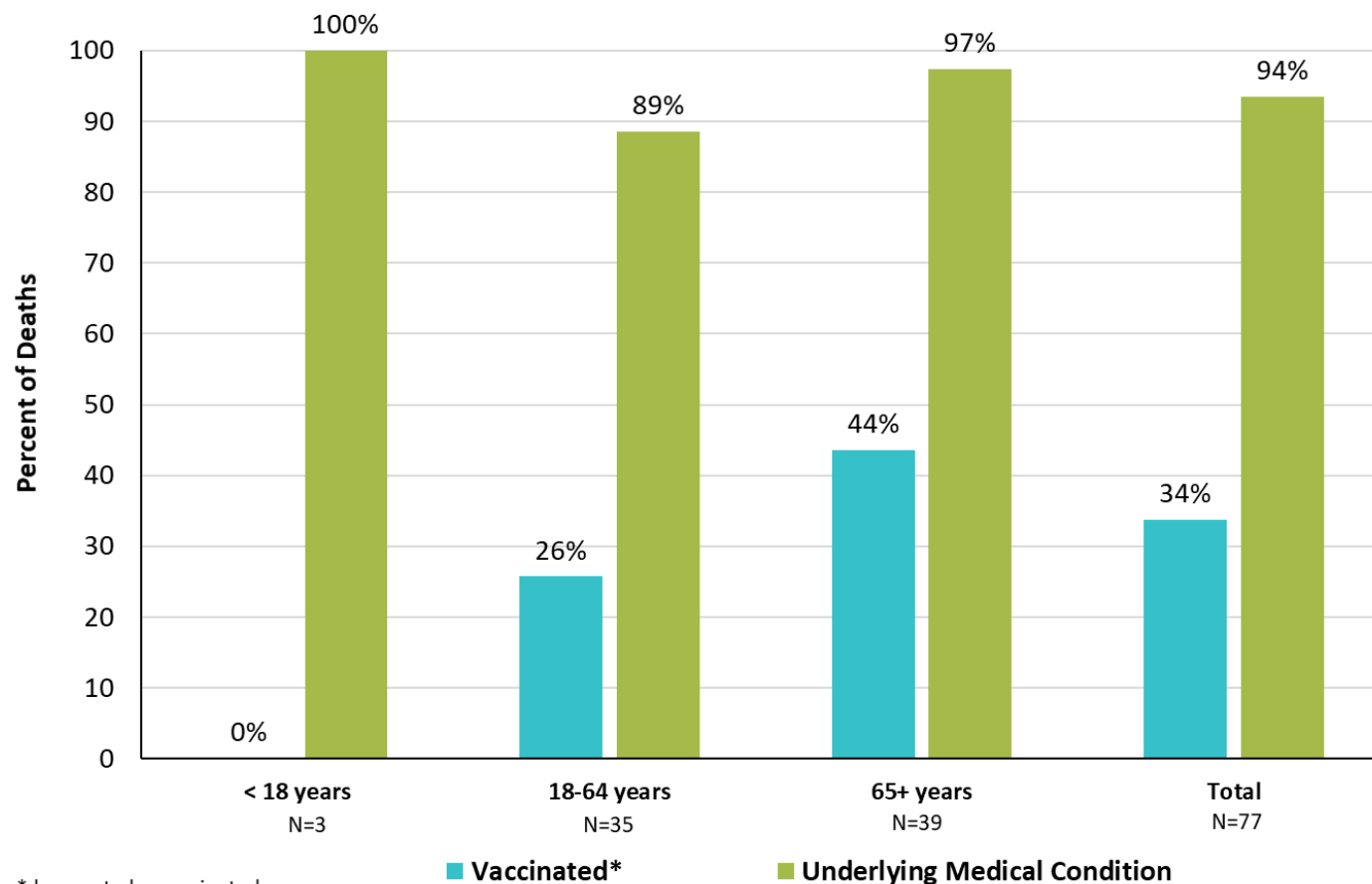
Positive Test Type/Subtype	Count	Percent
Influenza A, Subtype Unknown	8,313	86.1%
Influenza A (H1N1)pdm09	507	5.3%
Influenza A (H3)	184	1.9%
Influenza B, Subtype Unknown	540	5.6%
Influenza B/Yamagata	3	0.0%
Influenza B/Victoria	1	0.0%
Influenza, Type Unknown	107	1.1%
Total	9,655	100%

Data Source: San Diego County Communicable Disease Registry
Prepared by County of San Diego, Health & Human Services Agency,
Public Health Services, Epidemiology and Immunization Services Branch

2018-19 Influenza Season Summary



Figure 1. Percent of Influenza Deaths by Age Group, Vaccination Status, and Underlying Medical Condition, 2018-19 Season.



Data Source: San Diego County Communicable Disease Registry
Prepared by County of San Diego, Health & Human Services Agency,
Public Health Services, Epidemiology and Immunization Services Branch

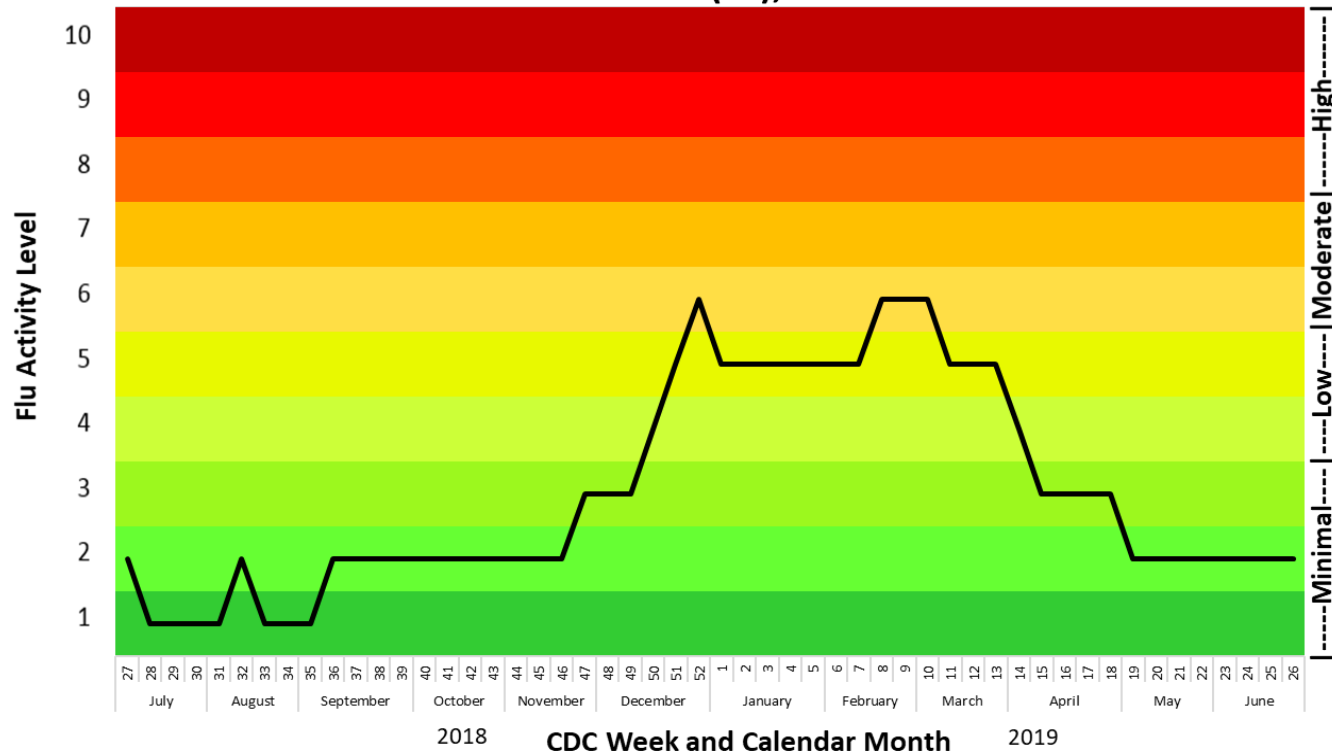
2018-19 Influenza Season Summary

Influenza Activity Indicator:

The activity levels show how the current week's ED ILI% (emergency department influenza-like-illness, percent of all visits) compares to the mean, and number of standard deviations above of the mean, of the non-influenza season weeks (CDC disease weeks 27-39) observed from the prior five seasons.

There are 10 activity levels, classified as: Minimal (levels 1-3), Low (levels 4-5), Moderate (levels 6-7), and High (levels 8-10). An activity level of 1 corresponds to when the ED ILI% is below the mean; level 2 corresponds to when the ED ILI% is less than 1 standard deviation above the mean; level 3 corresponds to when the ED ILI% is more than 1 but less than 2 standard deviations above the mean, and so on, with an activity level of 10 corresponding to when the ED ILI% is at 8 or more standard deviations above the mean.

Figure 2. Influenza Activity Level for Emergency Department Influenza-like Illness (ILI), 2018-19 Season.



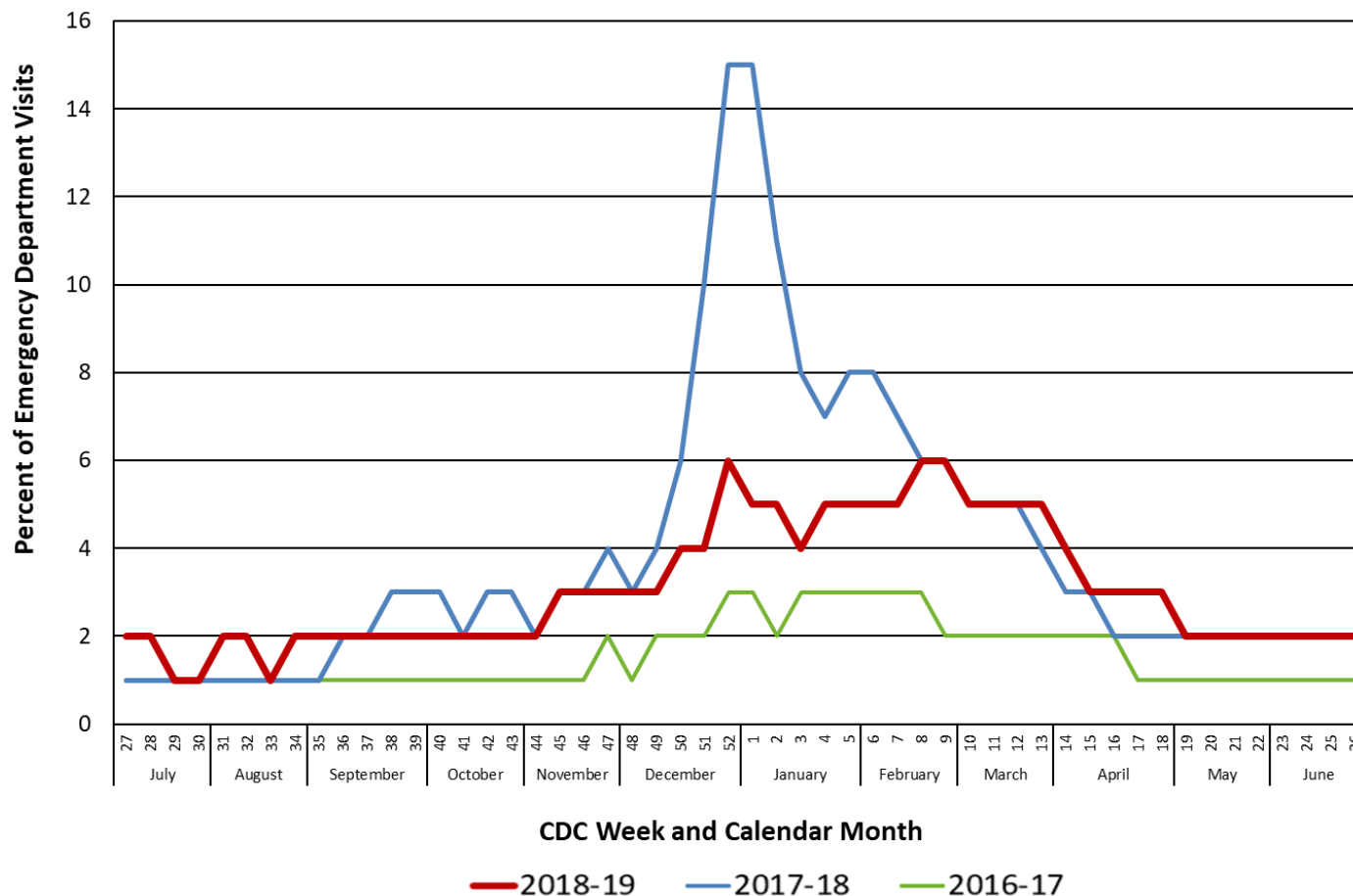
Legend

Minimal			Low		Moderate		High		
LEVEL 1	LEVEL 2	LEVEL 3	LEVEL 4	LEVEL 5	LEVEL 6	LEVEL 7	LEVEL 8	LEVEL 9	LEVEL 10
< mean	≥ mean and <1 standard deviation above mean	≥1 and <2 standard deviations above mean	≥2 and <3 standard deviations above mean	≥3 and <4 standard deviations above mean	≥4 and <5 standard deviations above mean	≥5 and <6 standard deviations above mean	≥6 and <7 standard deviations above mean	≥7 and <8 standard deviations above mean	≥8 standard deviations above mean

2018-19 Influenza Season Summary



Figure 3. Percent of Emergency Department Visits for ILI Chief Complaint by CDC Week and Season.

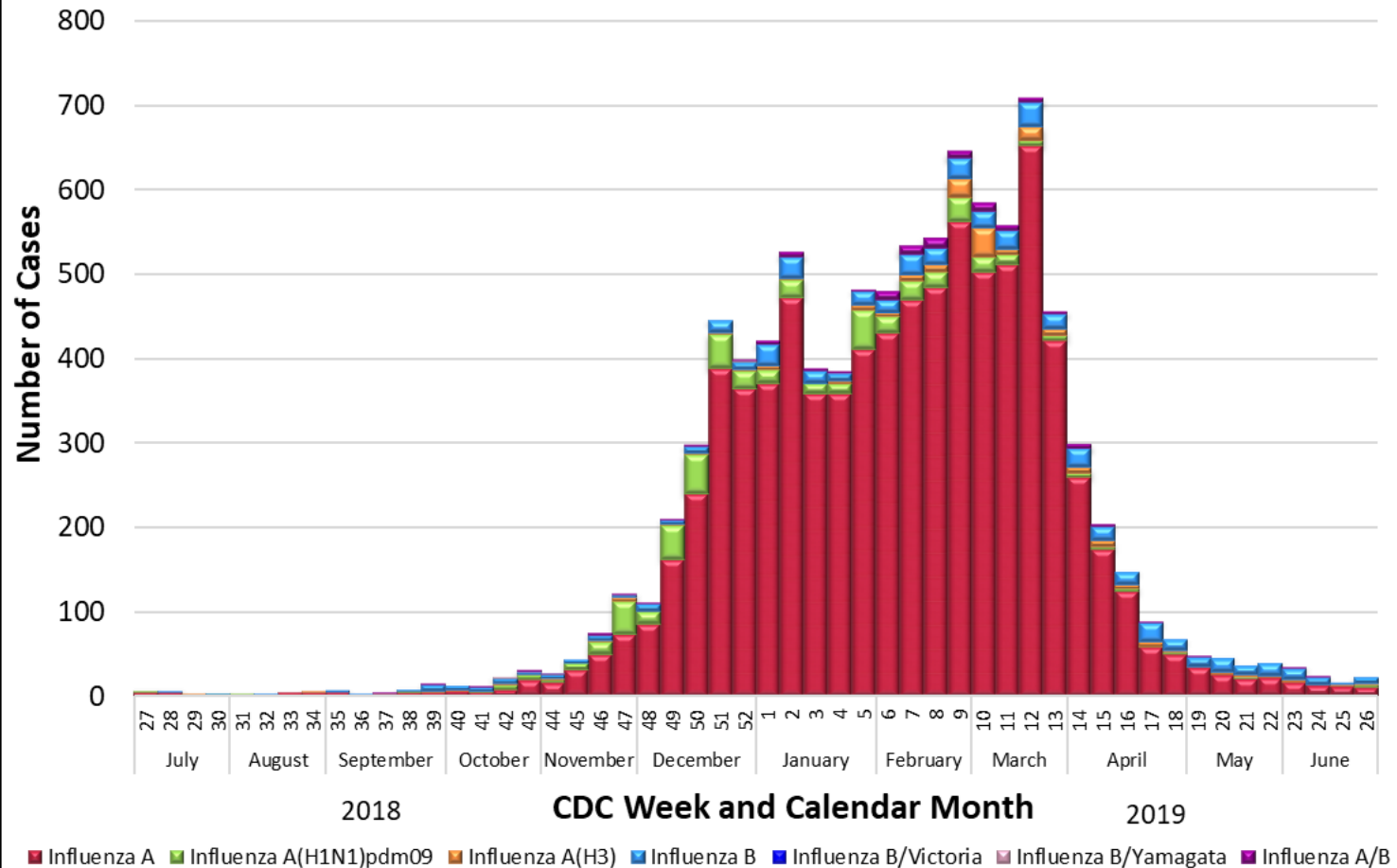


Data Source: Emergency department chief complaint data
 Prepared by County of San Diego, Health & Human Services Agency,
 Public Health Services, Epidemiology and Immunization Services Branch

2018-19 Influenza Season Summary



Figure 4. San Diego County Influenza Cases Reported by Type and CDC Week*, 2018-19 Season (N=9,655).

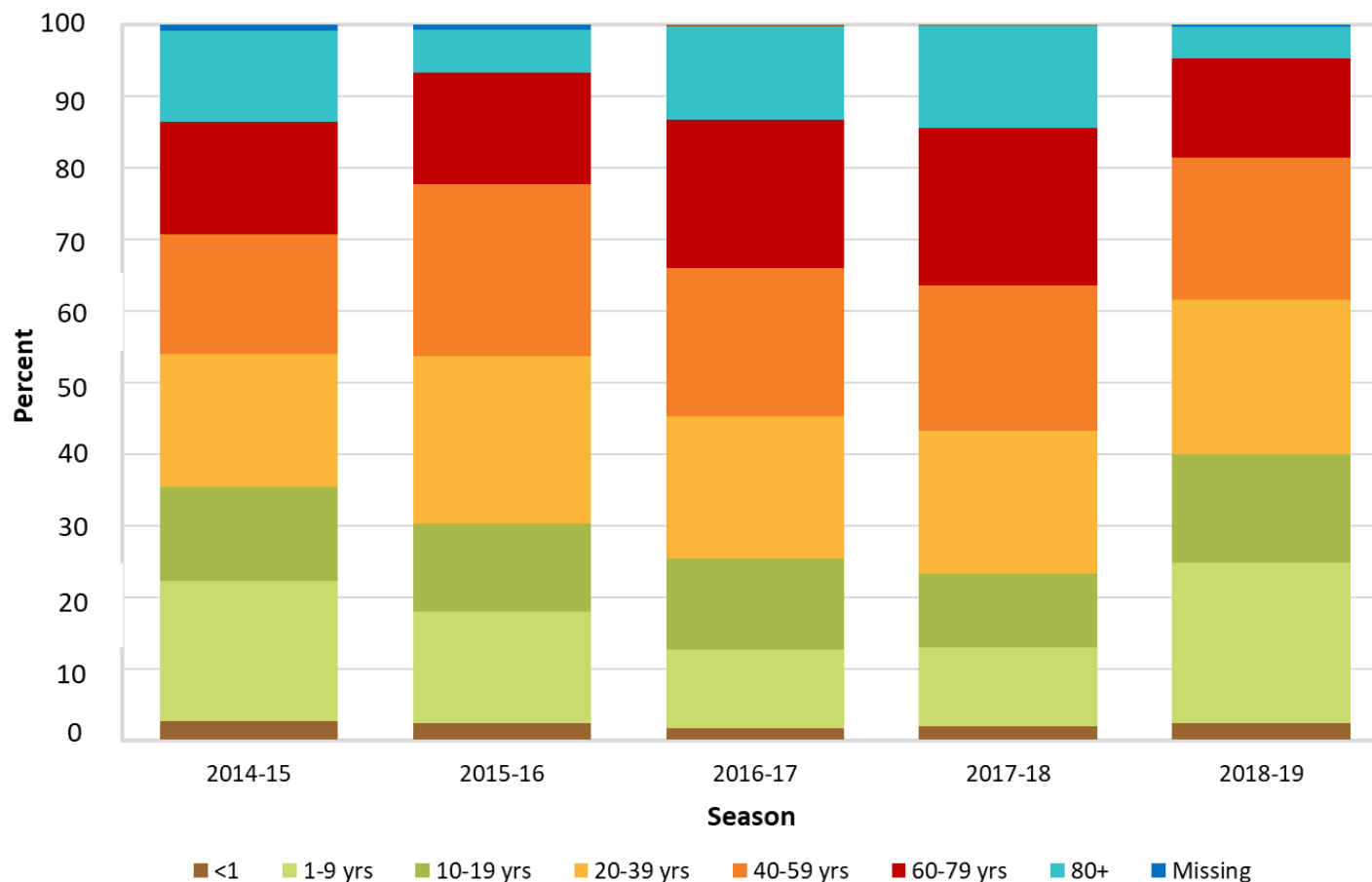


Data Source: San Diego County Communicable Disease Registry
 Prepared by County of San Diego, Health & Human Services Agency,
 Public Health Services, Epidemiology and Immunization Services Branch

2018-19 Influenza Season Summary



Figure 5. Proportion of Influenza Cases by Age Group and Season.

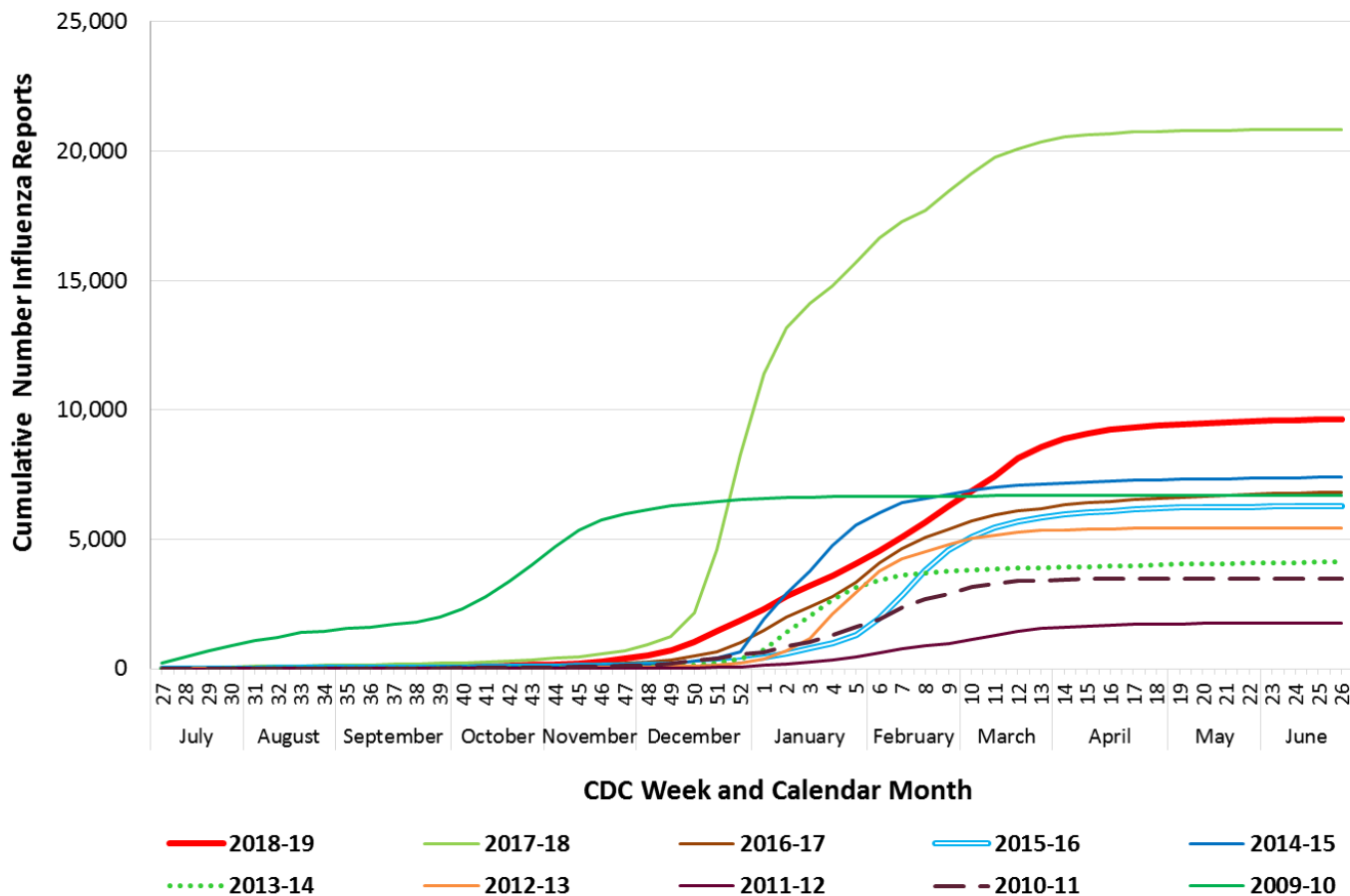


Data Source: San Diego County Communicable Disease Registry
Prepared by County of San Diego, Health & Human Services Agency,
Public Health Services, Epidemiology and Immunization Services Branch

2018-19 Season Summary



**Figure 6. Cumulative Influenza Case Reports
by Episode Week & Season.**



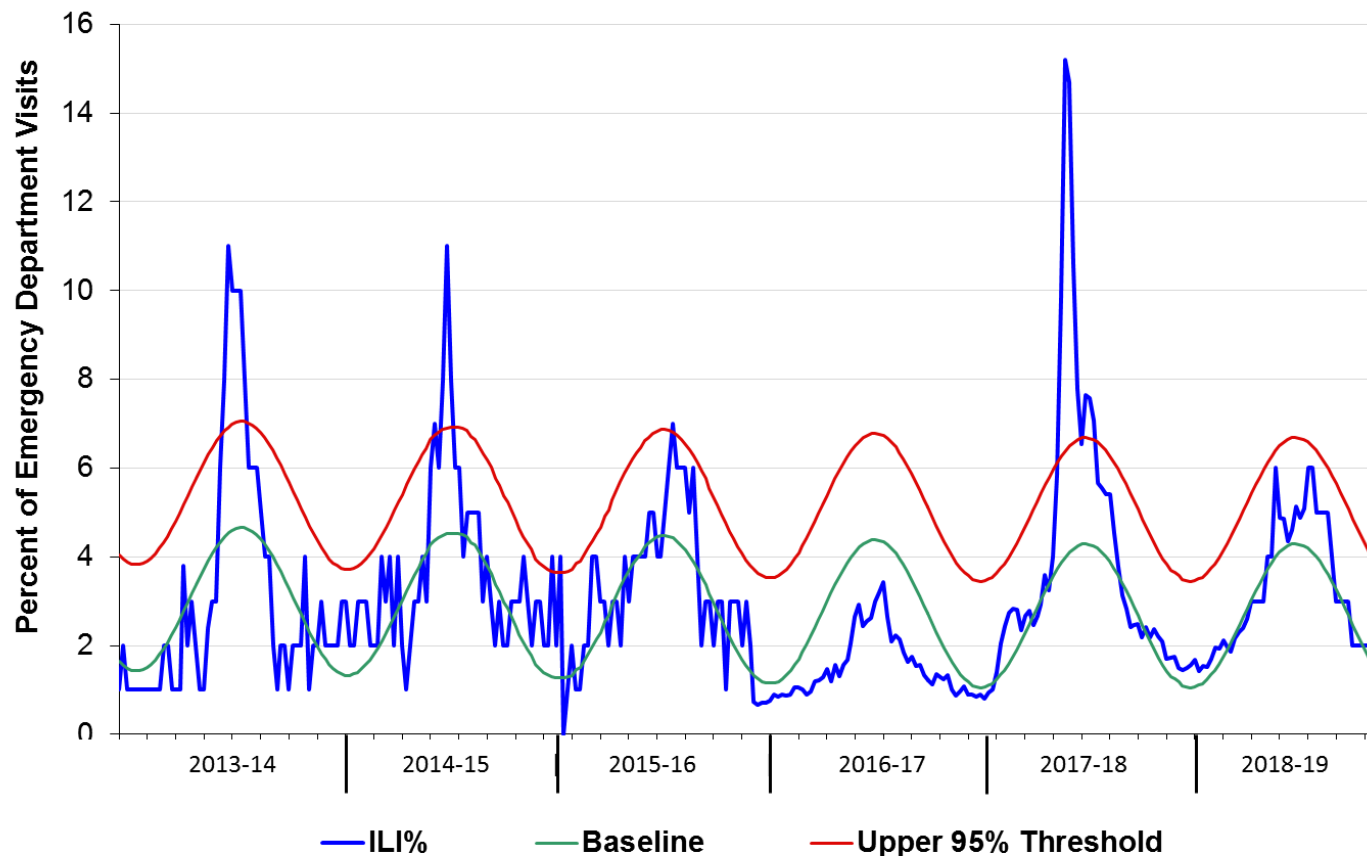
Data Source: San Diego County Communicable Disease Registry
Prepared by County of San Diego, Health & Human Services Agency,
Public Health Services, Epidemiology and Immunization Services Branch

2018-19 Season Summary



LIVE WELL
SAN DIEGO

Figure 7. Percent of San Diego County Emergency Department Visits for Influenza-like Illness by Week and Season Compared to 5-Year Baseline & Upper 95% Threshold Values (Serfling Method).

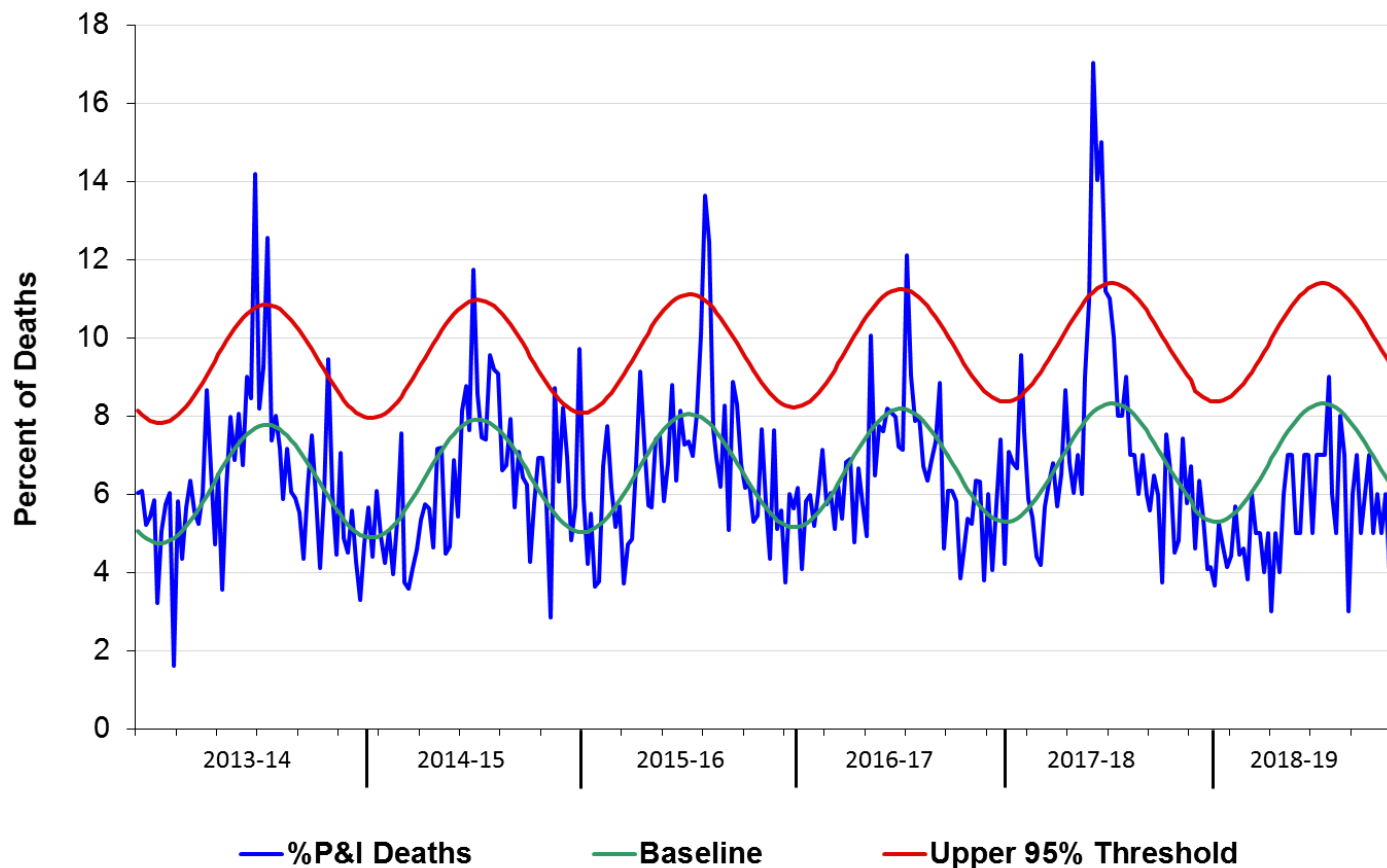


Data Source: Emergency department chief complaint data
Prepared by County of San Diego, Health & Human Services Agency,
Public Health Services, Epidemiology and Immunization Services Branch

2018-19 Influenza Season Summary



Figure 8. Percent of San Diego County Deaths Registered with Pneumonia and/or Influenza by Week and Season Compared to Prior 5-Year Baseline & Upper 95% Threshold Values (Serfling Method).

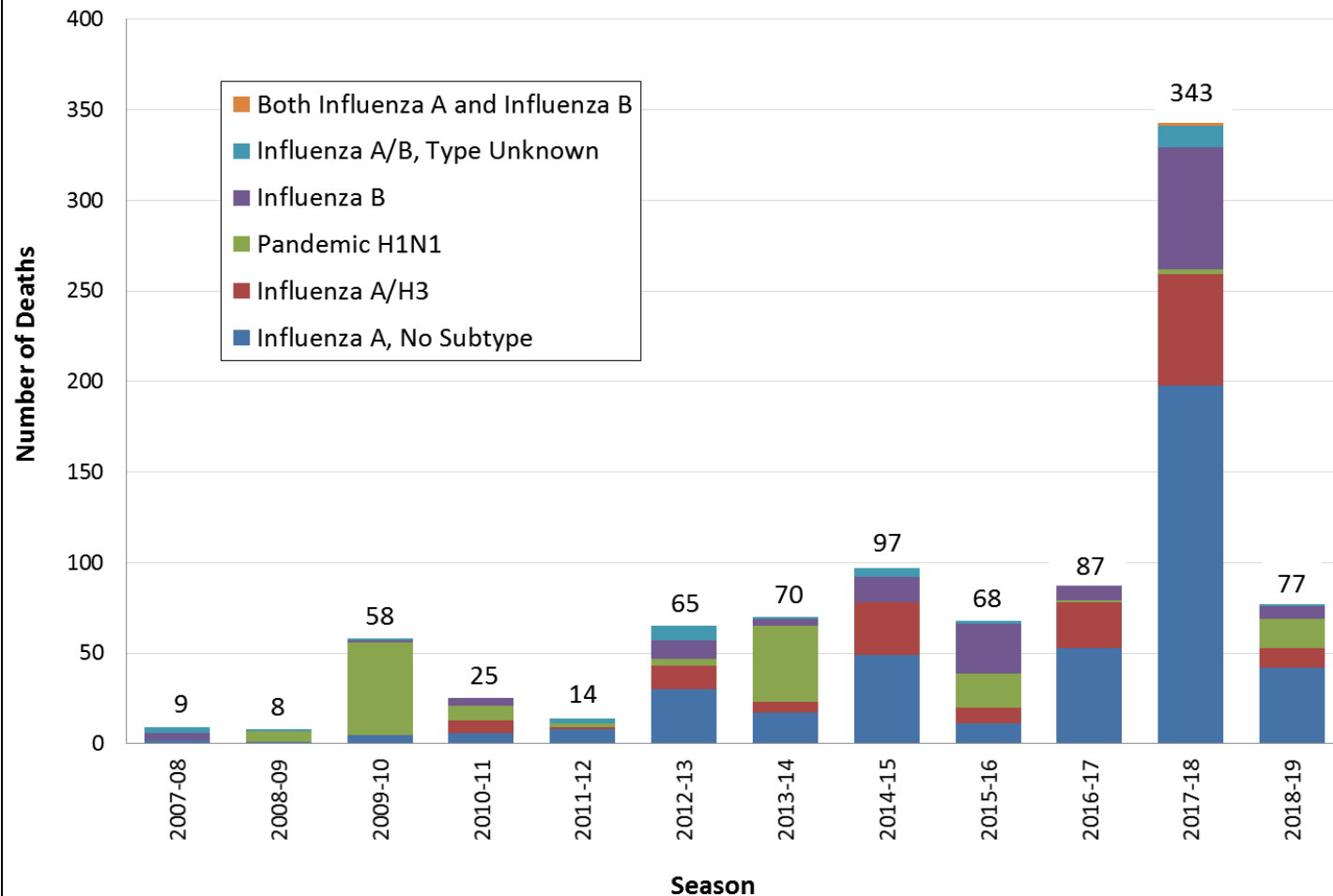


Data Source: Vital Records Information System (VRIS)
Prepared by County of San Diego, Health & Human Services Agency,
Public Health Services, Epidemiology and Immunization Services Branch

2018-19 Influenza Season Summary



Figure 9. Influenza Deaths by Type and Season.

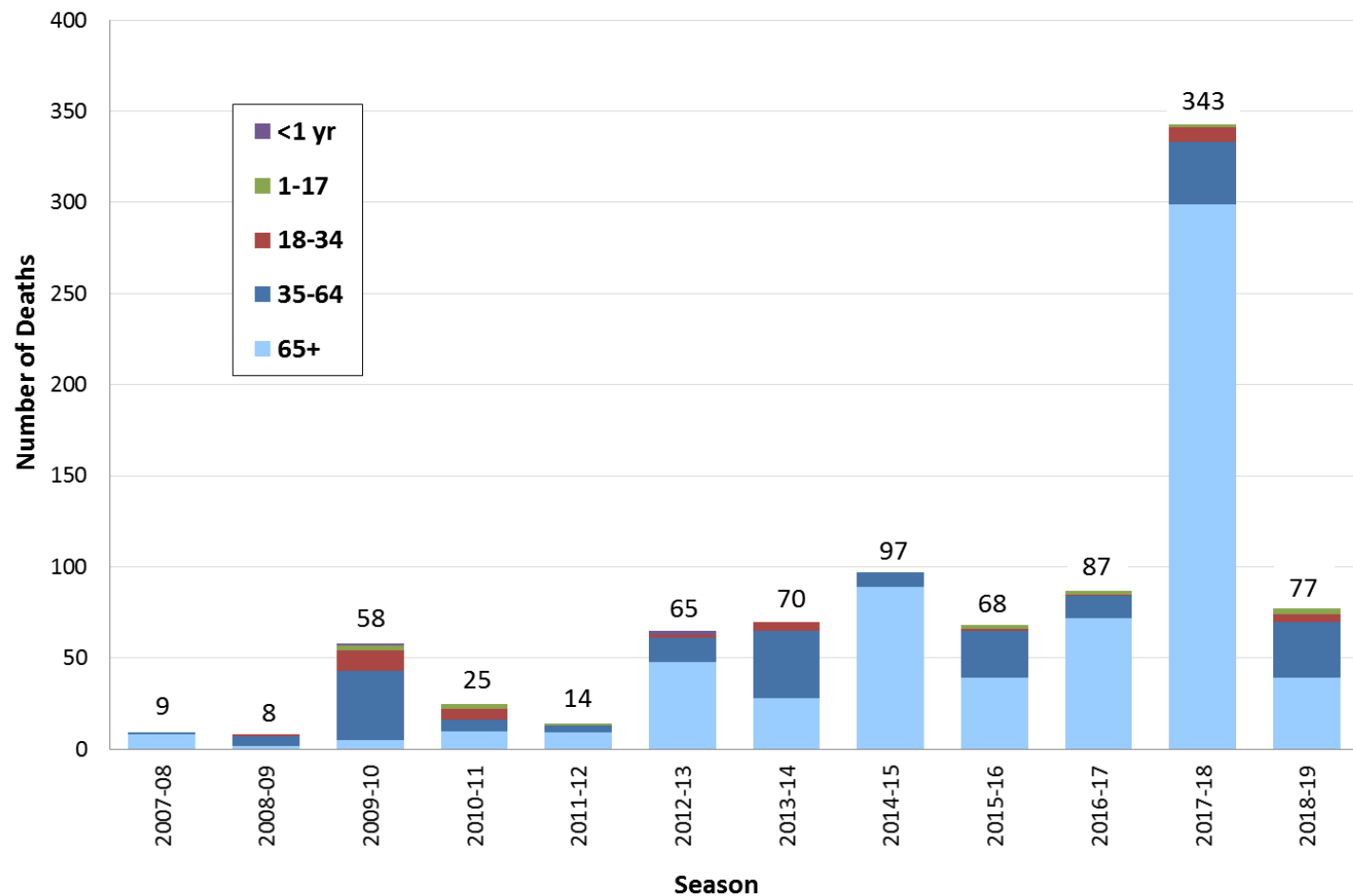


Data Source: San Diego County Communicable Disease Registry
Prepared by County of San Diego, Health & Human Services Agency,
Public Health Services, Epidemiology and Immunization Services Branch

2018-19 Influenza Season Summary



Figure 10. Influenza Deaths by Age and Season.

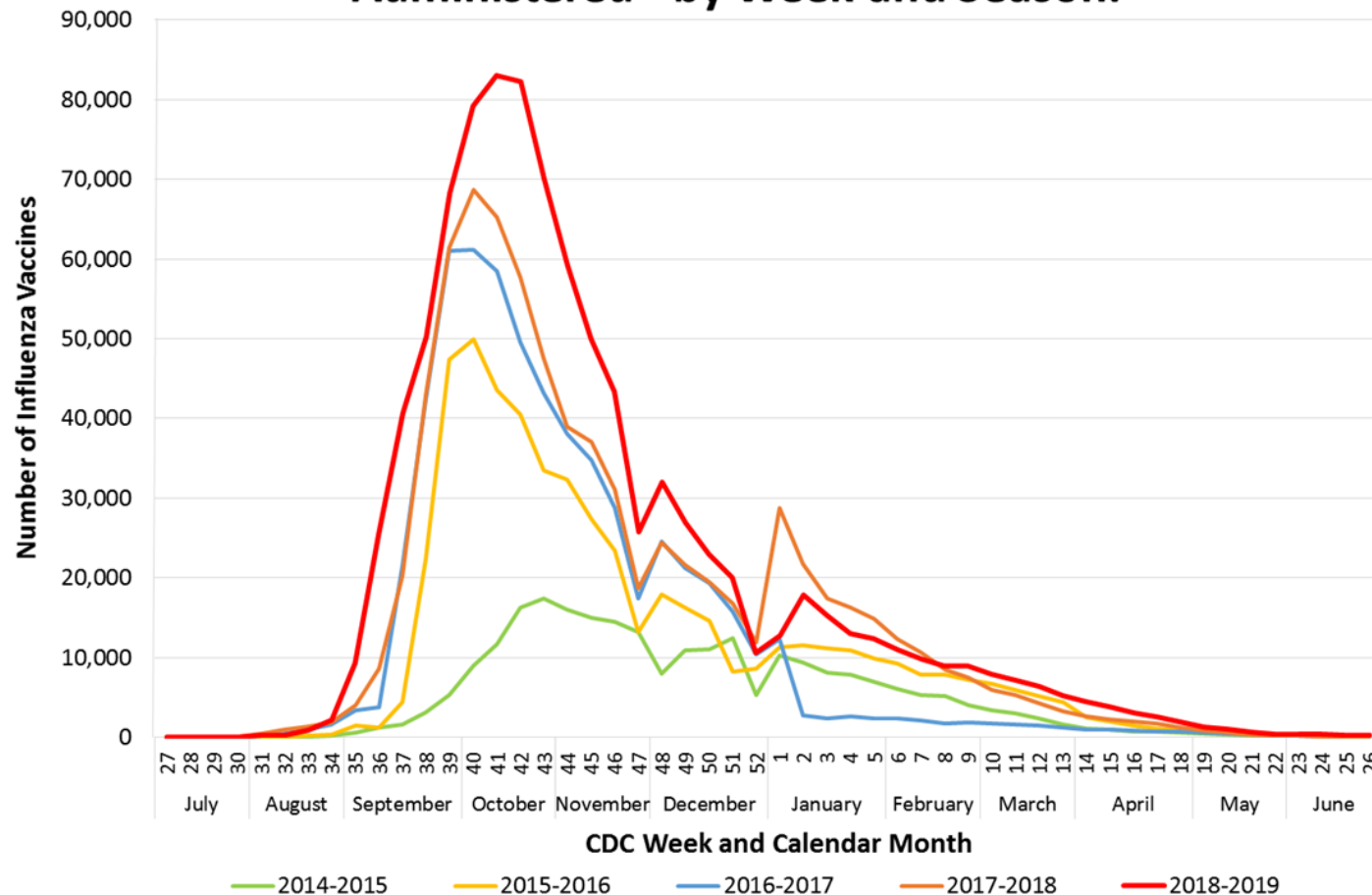


Data Source: San Diego County Communicable Disease Registry
Prepared by County of San Diego, Health & Human Services Agency,
Public Health Services, Epidemiology and Immunization Services Branch

2018-19 Influenza Season Summary



Figure 11. Number of Influenza Vaccinations Administered* by Week and Season.

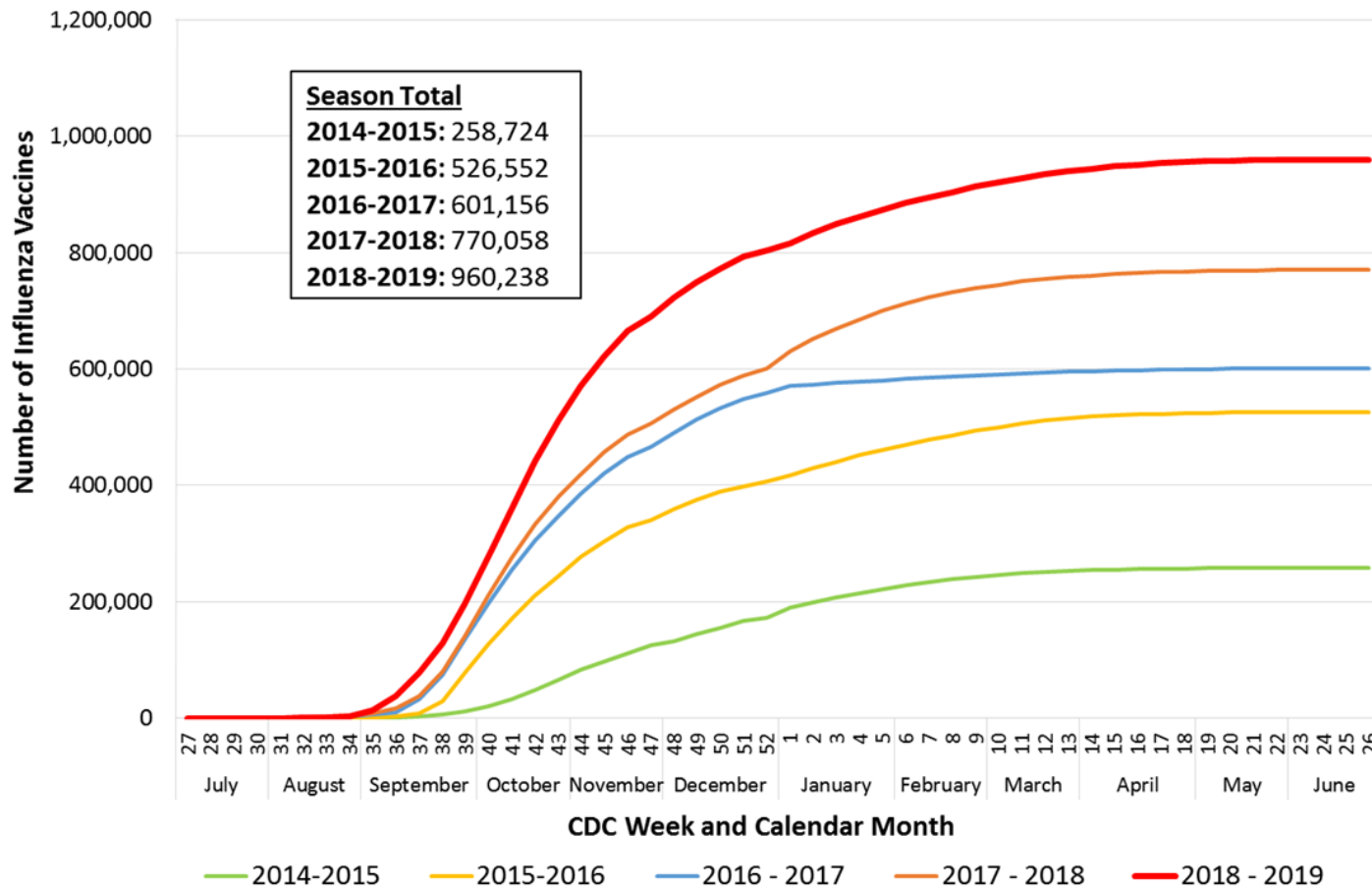


Data Source: San Diego Immunization Registry (SDIR)
Prepared by County of San Diego, Health & Human Services Agency,
Public Health Services, Epidemiology and Immunization Services Branch

2018-19 Influenza Season Summary



Figure 12. Cumulative Number of Influenza Vaccinations Administered* by Week and Season.

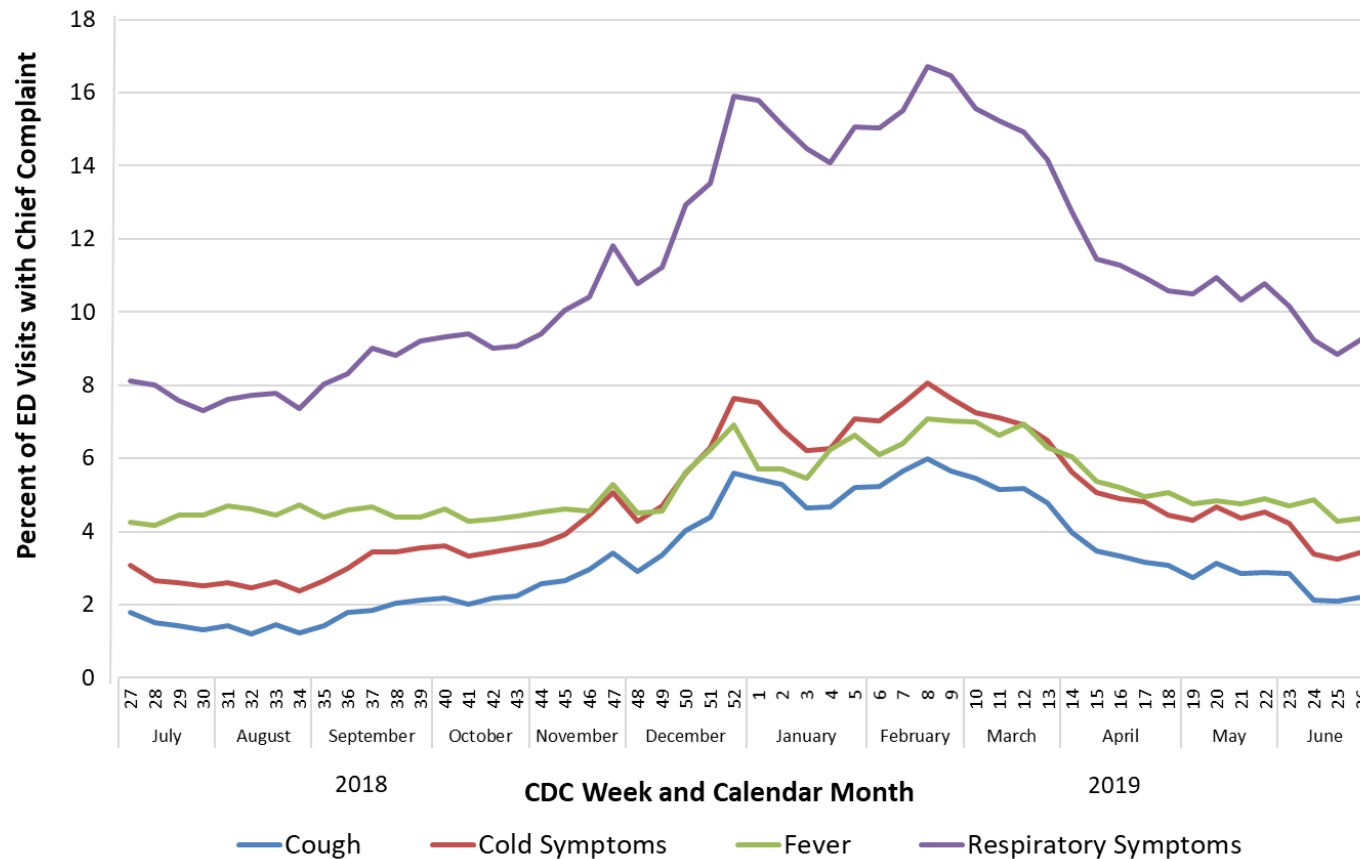


Data Source: San Diego Immunization Registry (SDIR)
Prepared by County of San Diego, Health & Human Services Agency,
Public Health Services, Epidemiology and Immunization Services Branch

2018-19 Influenza Season Summary



Figure 13. Percent of Emergency Department Visit Chief Complaints for Cough, Cold, Fever, or Respiratory Symptoms by Week, 2018-19 Season.



Data Source: Emergency department chief complaint data
 Prepared by County of San Diego, Health & Human Services Agency,
 Public Health Services, Epidemiology and Immunization Services Branch