



SAN DIEGO COUNTY INFLUENZA SURVEILLANCE

2018-19 SEASON

RESULTS AS OF WEEK 18 (ENDING 5/4/2019)



CURRENT UPDATE

Reported Since July 1, 2018



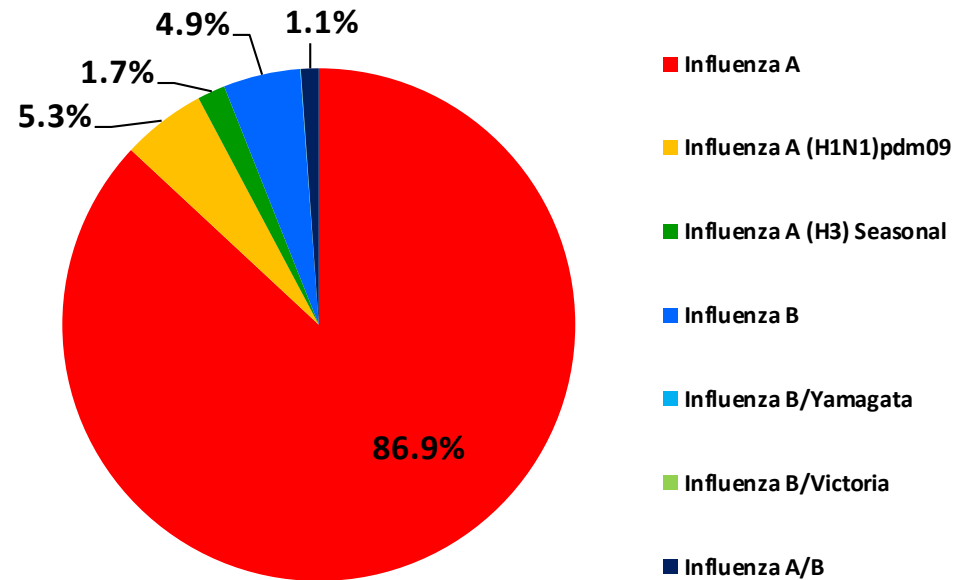
TOTAL REPORTED INFLUENZA CASES

9,373

68 Flu Deaths

1 Pediatric Death

27 Outbreaks



Preliminary Results

Data Source: Reported Influenza Case Reports

Prepared by County of San Diego, Health & Human Services Agency,
Public Health Services, Epidemiology and Immunization Services Branch

5/8/2019

INFLUENZA SURVEILLANCE UPDATE, 2018-19 YTD



Table 1. Influenza Surveillance Indicators.

Indicator	2018-19 Season			2017-18 Season		Prior 3-Year Average**	
	Week 18	Week 17	Total To Date	Week 18	Total To Date	Week 18	Total To Date
All influenza detections reported (rapid or PCR)	86	114	9,373	32	20,767	36	10,826
Percent of emergency department visits for ILI	3%	3%		2%		2%	
Percent of deaths registered with pneumonia and/or influenza	7%	6%		6%		7%	
Number of influenza-related deaths reported [^]	1	0	68	1	342	1	164

Influenza season is July 1 - June 30, Weeks 27-26. Total deaths reported in prior seasons: 342 in 2017-18, 87 in 2016-17, and 68 in 2015-16.

* Previous weeks case counts or percentages may change due to delayed processing or reporting.

** Includes FYs 2015-16, 2016-17, and 2017-18.

[^] Current FY deaths are shown by week of report; by week of death for prior FYs.

Preliminary Results

Data Source: Reported Influenza Case Reports

Prepared by County of San Diego, Health & Human Services Agency,
Public Health Services, Epidemiology and Immunization Services Branch

5/8/2019

INFLUENZA SURVEILLANCE UPDATE, 2018-19 YTD



Table 2. Influenza Detections Reported, FY 2018-19*

Positive Test Type/Subtype	Week 18	Week 17	Total FYTD	Percent FYTD
Influenza A	67	81	8,148	86.9%
Influenza A (H1N1)pdm09	2	1	497	5.3%
Influenza A (H3) Seasonal	1	6	164	1.7%
Influenza B	15	22	455	4.9%
Influenza B/Yamagata	0	0	1	0.0%
Influenza B/Victoria	0	0	3	0.0%
Influenza A/B	1	4	105	1.1%
Total	86	114	9,373	100.0%

* Season is July 1 - June 30

Preliminary Results

Data Source: Reported Influenza Case Reports

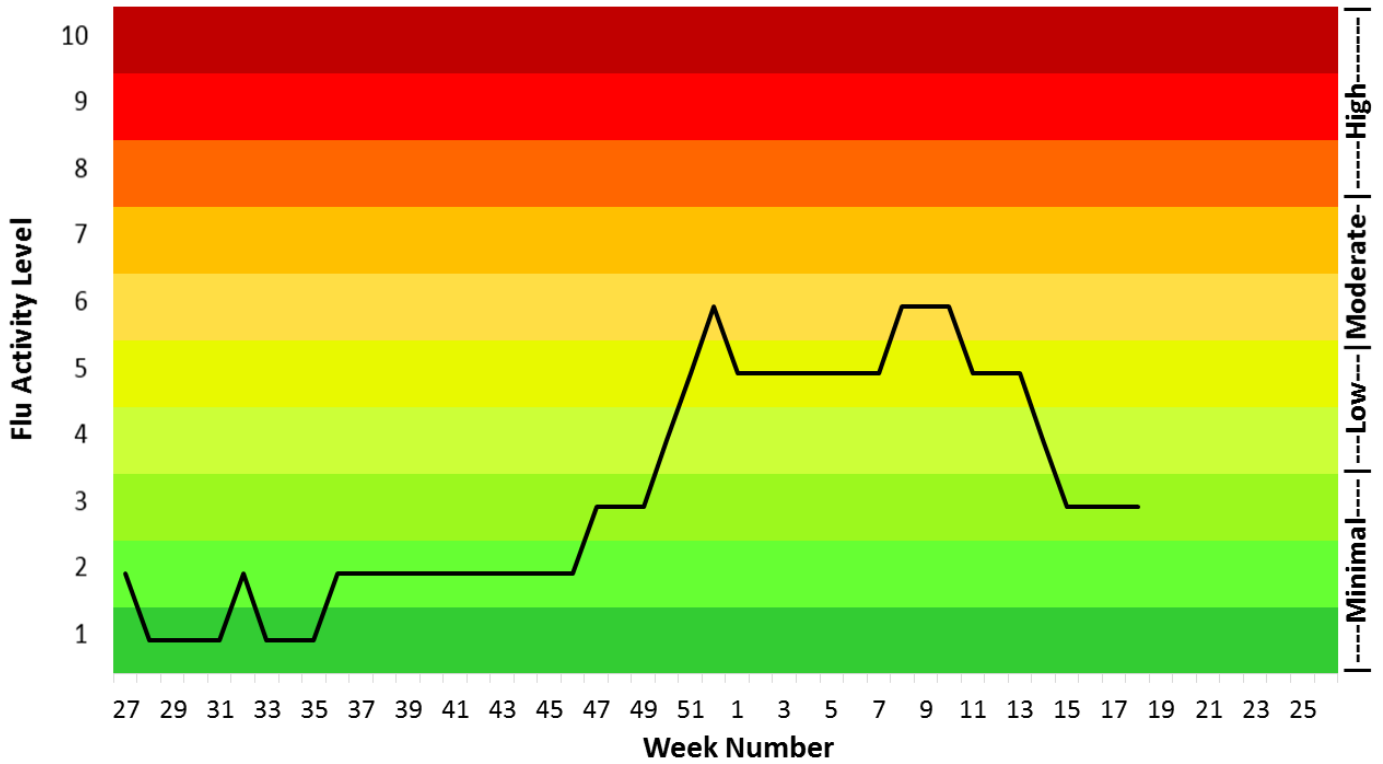
Prepared by County of San Diego, Health & Human Services Agency,
Public Health Services, Epidemiology and Immunization Services Branch

Influenza Activity Indicator:
 The activity levels show how the current week's ED ILI% (emergency department influenza-like-illness, percent of all visits) compares to the mean, and number of standard deviations above of the mean, of the non-influenza season weeks (CDC disease weeks 27-39) observed from the prior five seasons.

There are 10 activity levels, classified as: Minimal (levels 1-3), Low (levels 4-5), Moderate (levels 6-7), and High (levels 8-10). An activity level of 1 corresponds to when the ED ILI% is below the mean; level 2 corresponds to when the ED ILI% is less than 1 standard deviation above the mean; level 3 corresponds to when the ED ILI% is more than 1 but less than 2 standard deviations above the mean, and so on, with an activity level of 10 corresponding to when the ED ILI% is at 8 or more standard deviations above the mean.



Figure 1. Influenza Activity Level for Emergency Department ILI.



Legend	Minimal			Low		Moderate		High		
	LEVEL 1	LEVEL 2	LEVEL 3	LEVEL 4	LEVEL 5	LEVEL 6	LEVEL 7	LEVEL 8	LEVEL 9	LEVEL 10
	< mean	≥ mean and <1 standard deviation above mean	≥1 and <2 standard deviations above mean	≥2 and <3 standard deviations above mean	≥3 and <4 standard deviations above mean	≥4 and <5 standard deviations above mean	≥5 and <6 standard deviations above mean	≥6 and <7 standard deviations above mean	≥7 and <8 standard deviations above mean	≥8 standard deviations above mean

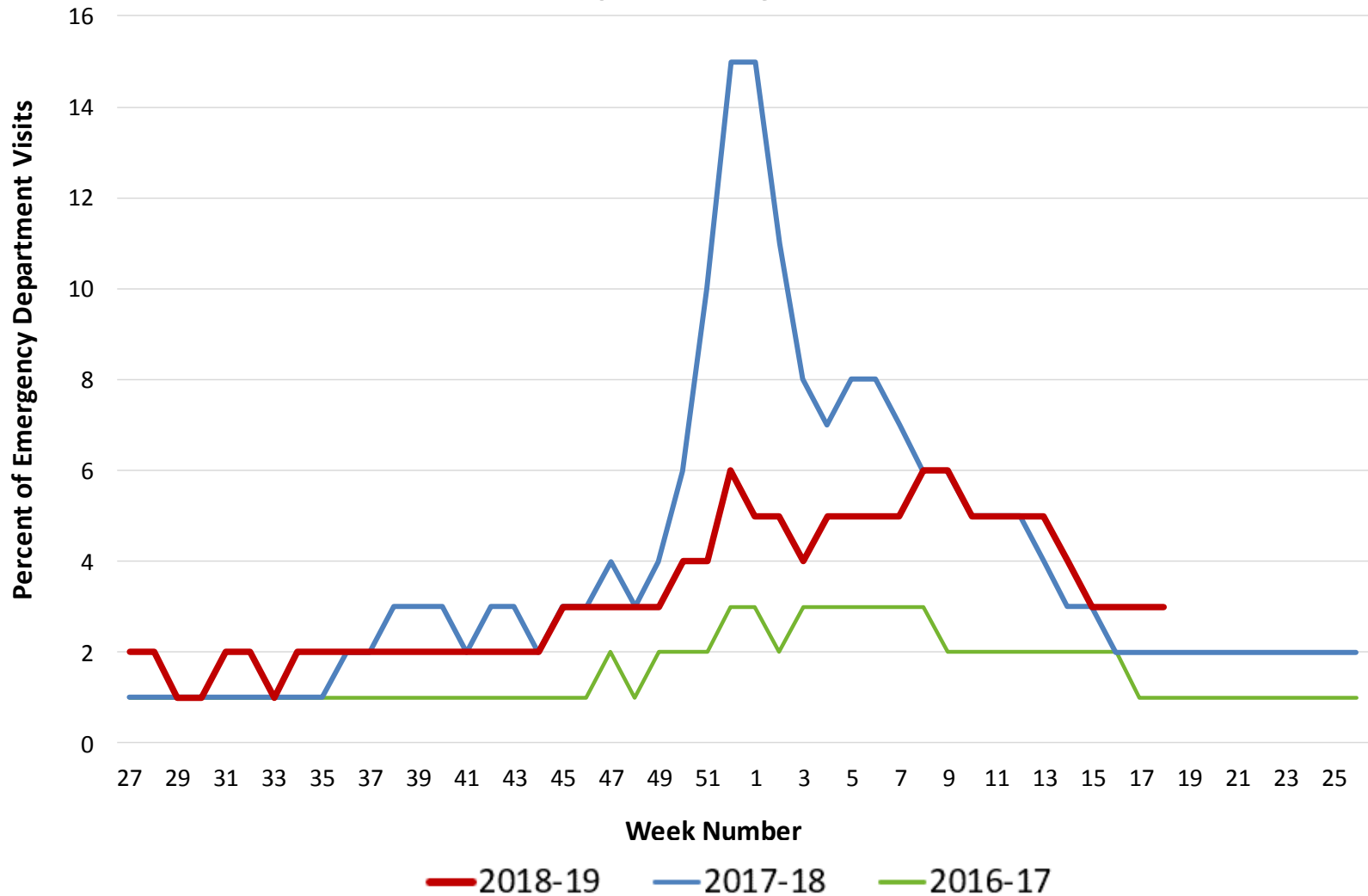
Preliminary Results

Data Source: Reported Influenza Case Reports

Prepared by County of San Diego, Health & Human Services Agency, Public Health Services, Epidemiology and Immunization Services Branch

5/8/2019

Figure 2. Percent of Emergency Department Visits for ILI Chief Complaint by Week and Season.



Preliminary Results

Data Source: Reported Influenza Case Reports

Prepared by County of San Diego, Health & Human Services Agency,
Public Health Services, Epidemiology and Immunization Services Branch

Figure 3. San Diego County Influenza Detections by Type and Week of Report, 2018-19 FYTD (N=9,373).

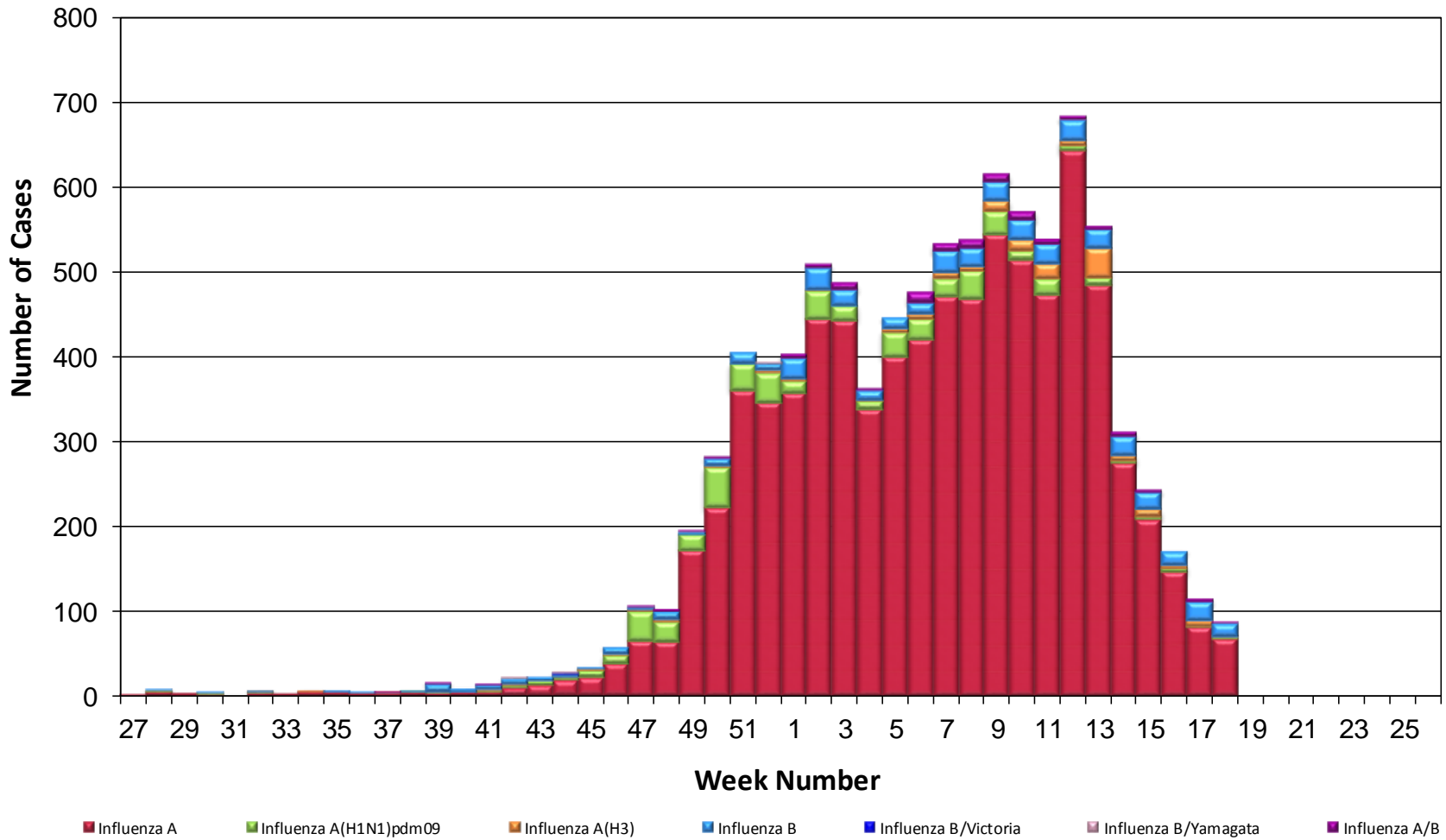
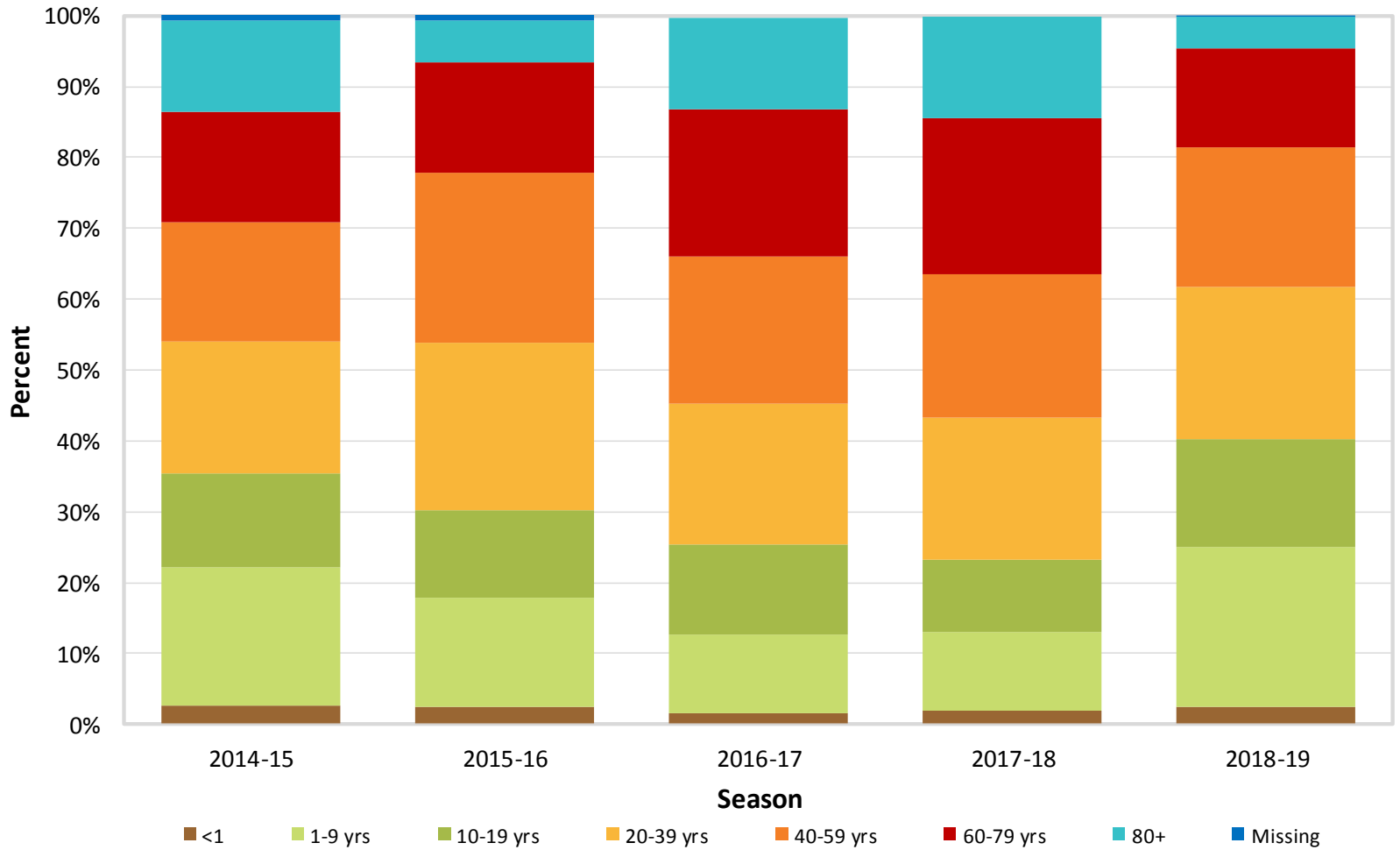


Figure 4. Proportion of Influenza Detections by Age and Season, 2014-15 to 2018-19.

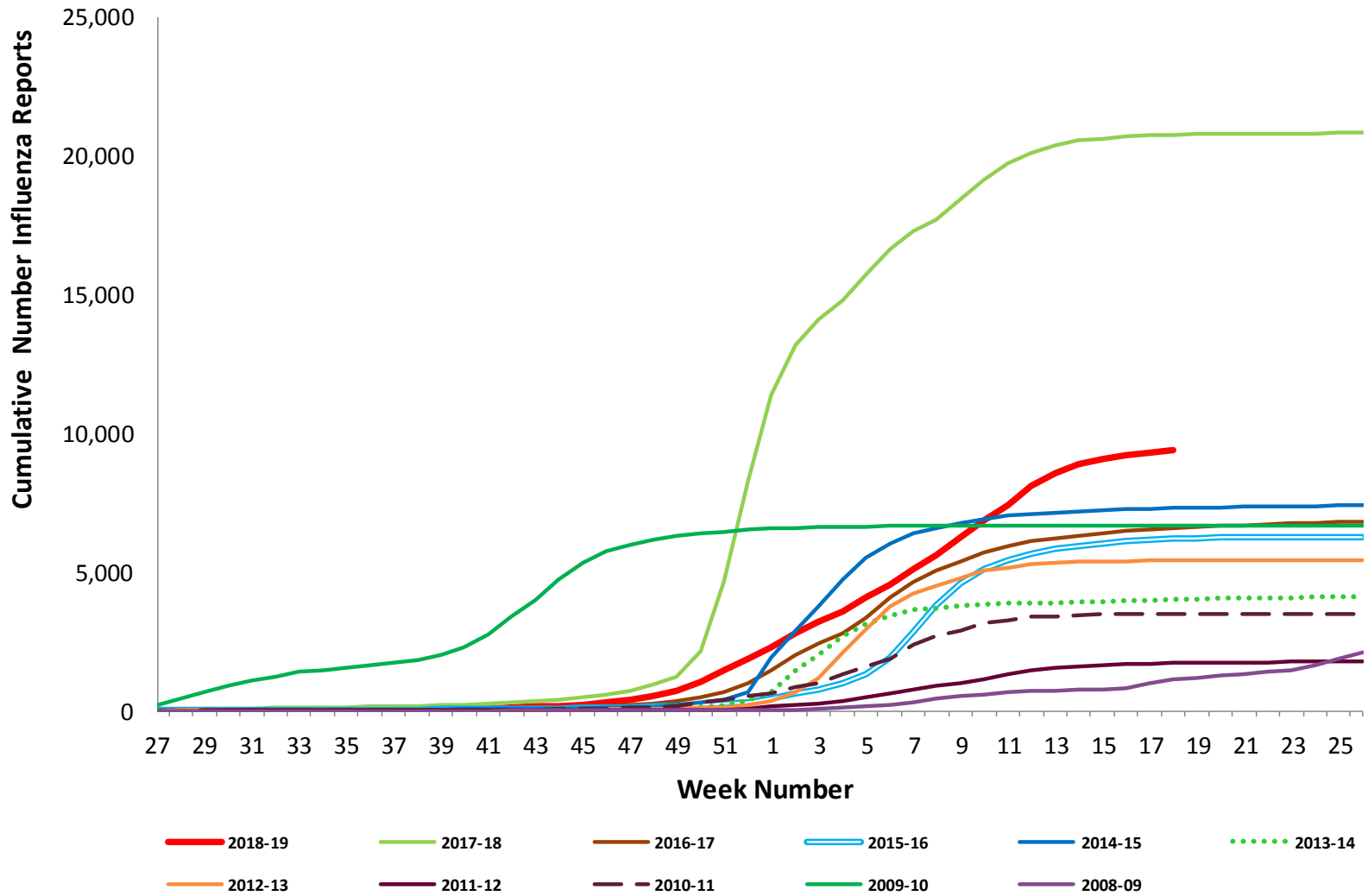


Preliminary Results

Data Source: Reported Influenza Case Reports

Prepared by County of San Diego, Health & Human Services Agency,
Public Health Services, Epidemiology and Immunization Services Branch

Figure 5. Cumulative Influenza Case Reports by Episode Week & Season.

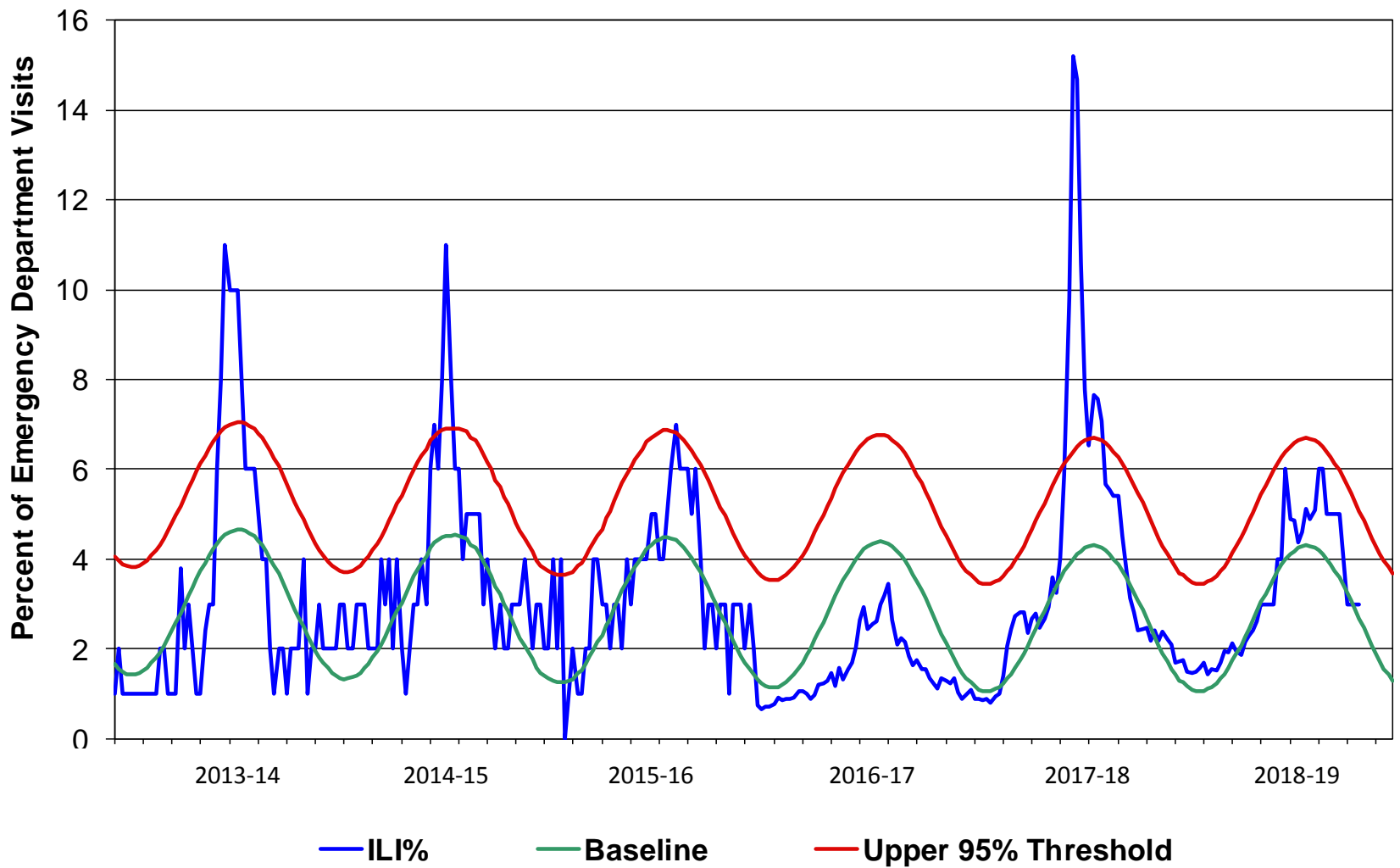


Preliminary Results

Data Source: Reported Influenza Case Reports

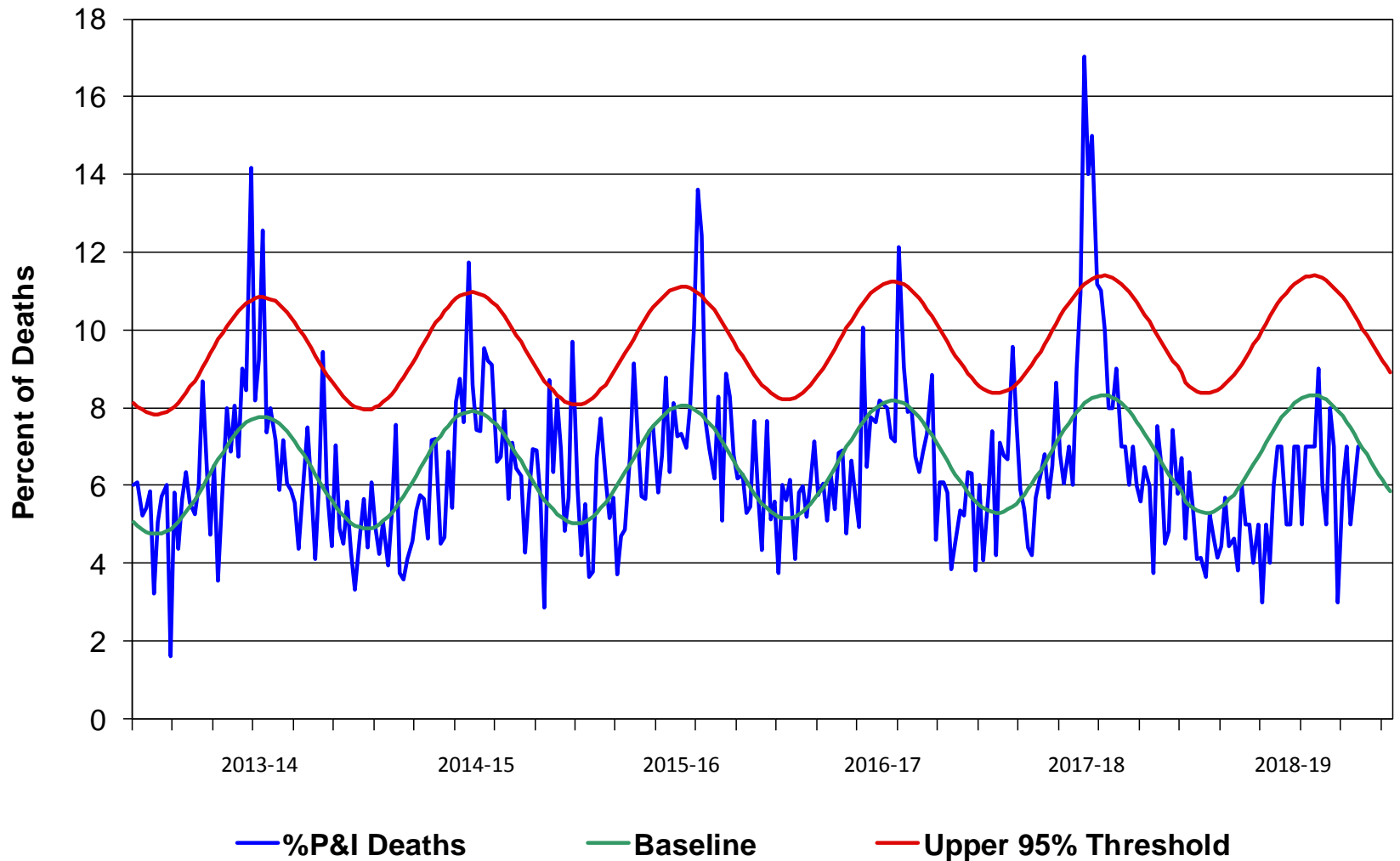
Prepared by County of San Diego, Health & Human Services Agency,
Public Health Services, Epidemiology and Immunization Services Branch

Figure 6. Percent of San Diego County Emergency Department Visits for Influenza-like Illness by Week and Season Compared to 5-Year Baseline & Upper 95% Threshold Values (Serfling Method).



Preliminary Results
 Data Source: Reported Influenza Case Reports
 Prepared by County of San Diego, Health & Human Services Agency,
 Public Health Services, Epidemiology and Immunization Services Branch

Figure 7. Percent of San Diego County Deaths Registered with Pneumonia and/or Influenza by Week and Season Compared to Prior 5-Year Baseline & Upper 95% Threshold Values (Serfling Method).



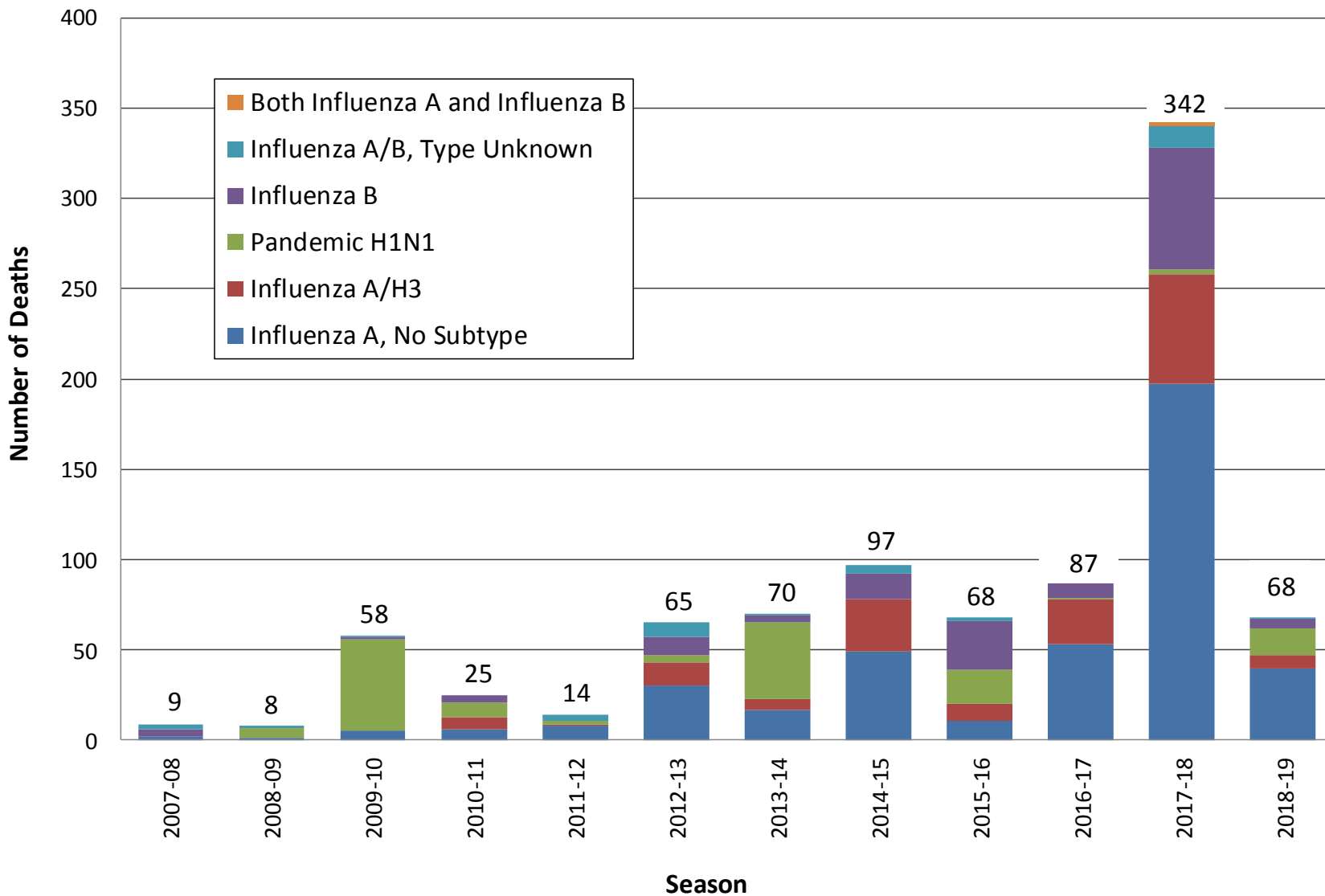
Preliminary Results

Data Source: Reported Influenza Case Reports

Prepared by County of San Diego, Health & Human Services Agency,
Public Health Services, Epidemiology and Immunization Services Branch

5/8/2019

Figure 8. Influenza Deaths by Type and Season.

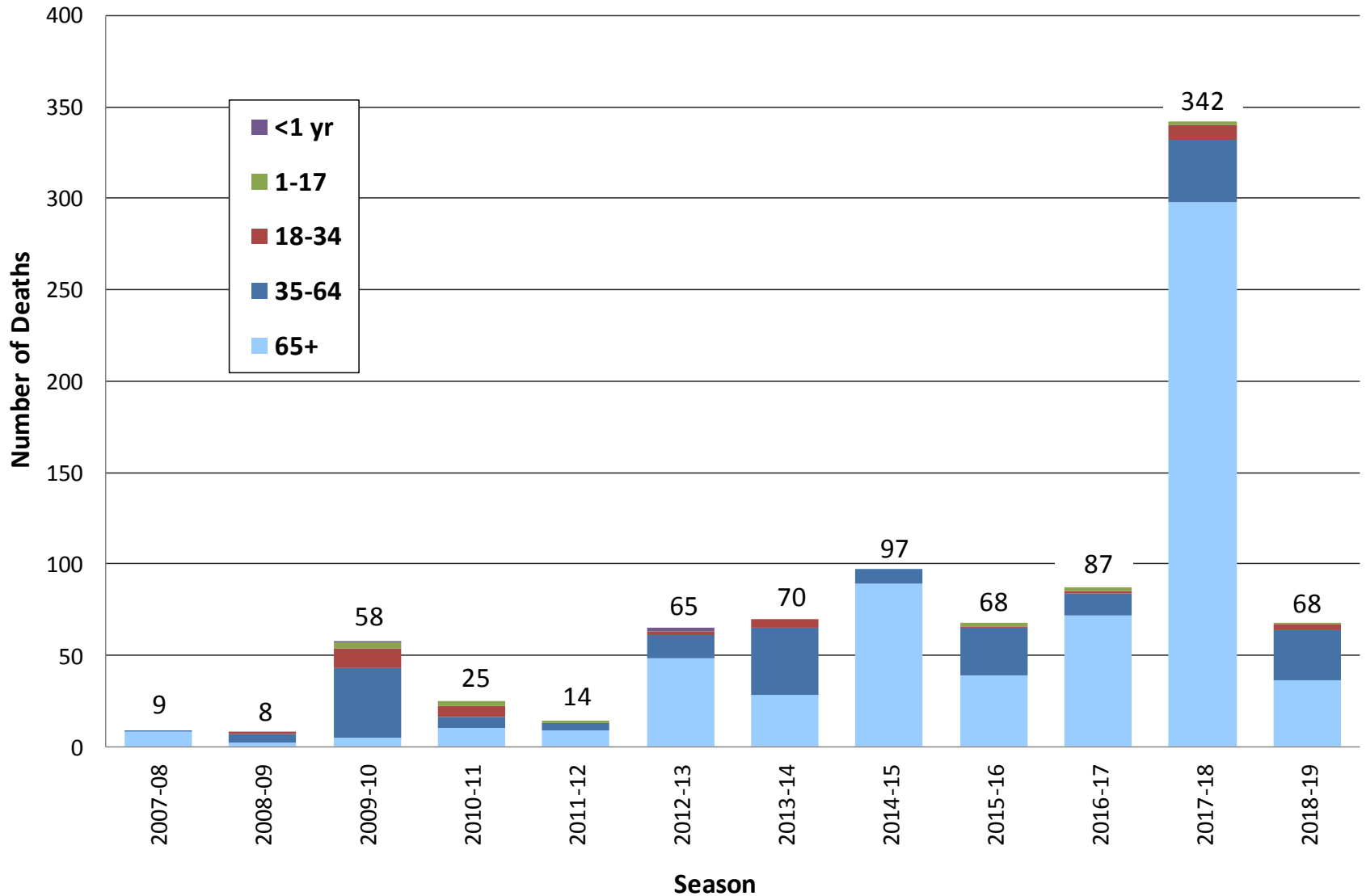


Preliminary Results

Data Source: Reported Influenza Case Reports

Prepared by County of San Diego, Health & Human Services Agency,
Public Health Services, Epidemiology and Immunization Services Branch

Figure 9. Influenza Deaths by Age and Season.

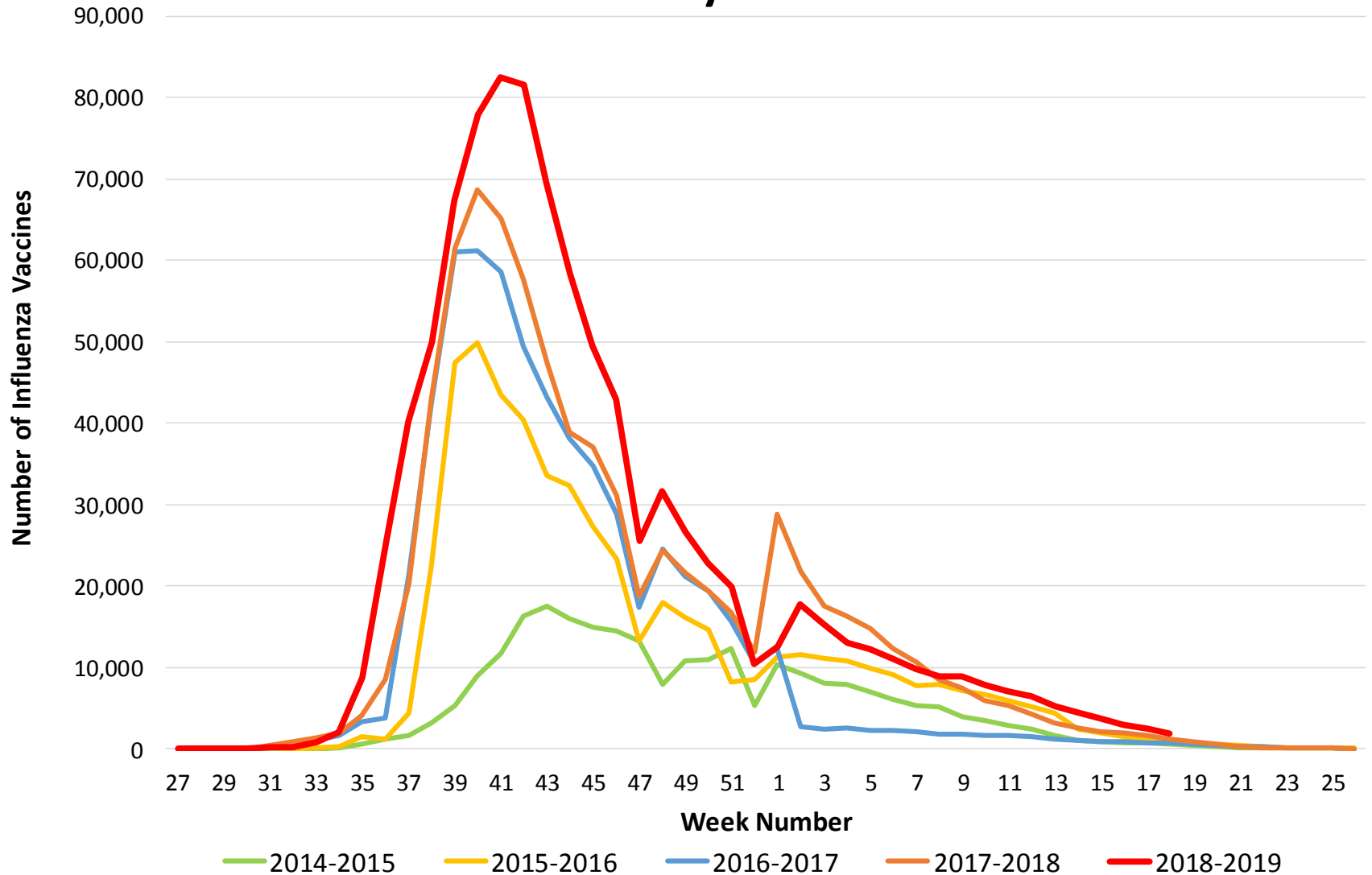


Preliminary Results

Data Source: Reported Influenza Case Reports

Prepared by County of San Diego, Health & Human Services Agency,
Public Health Services, Epidemiology and Immunization Services Branch

Figure 10. Number of Influenza Vaccinations Administered* by Week and Season.



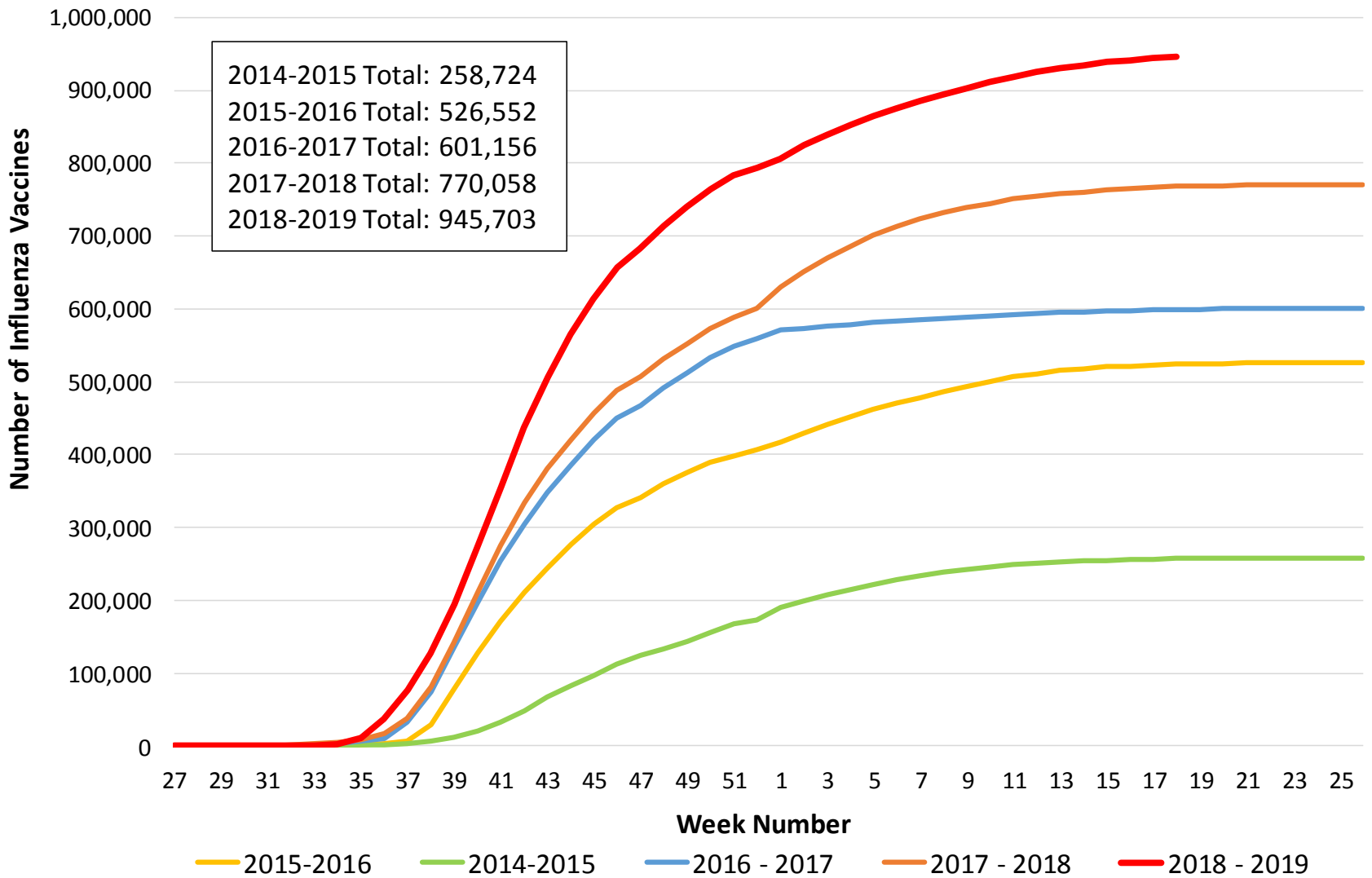
Preliminary Results

Data Source: San Diego Immunization Registry

Prepared by County of San Diego, Health & Human Services Agency,
Public Health Services, Epidemiology and Immunization Services Branch

5/8/2019

Figure 11. Cumulative Number of Influenza Vaccinations Administered* by Week and Season.

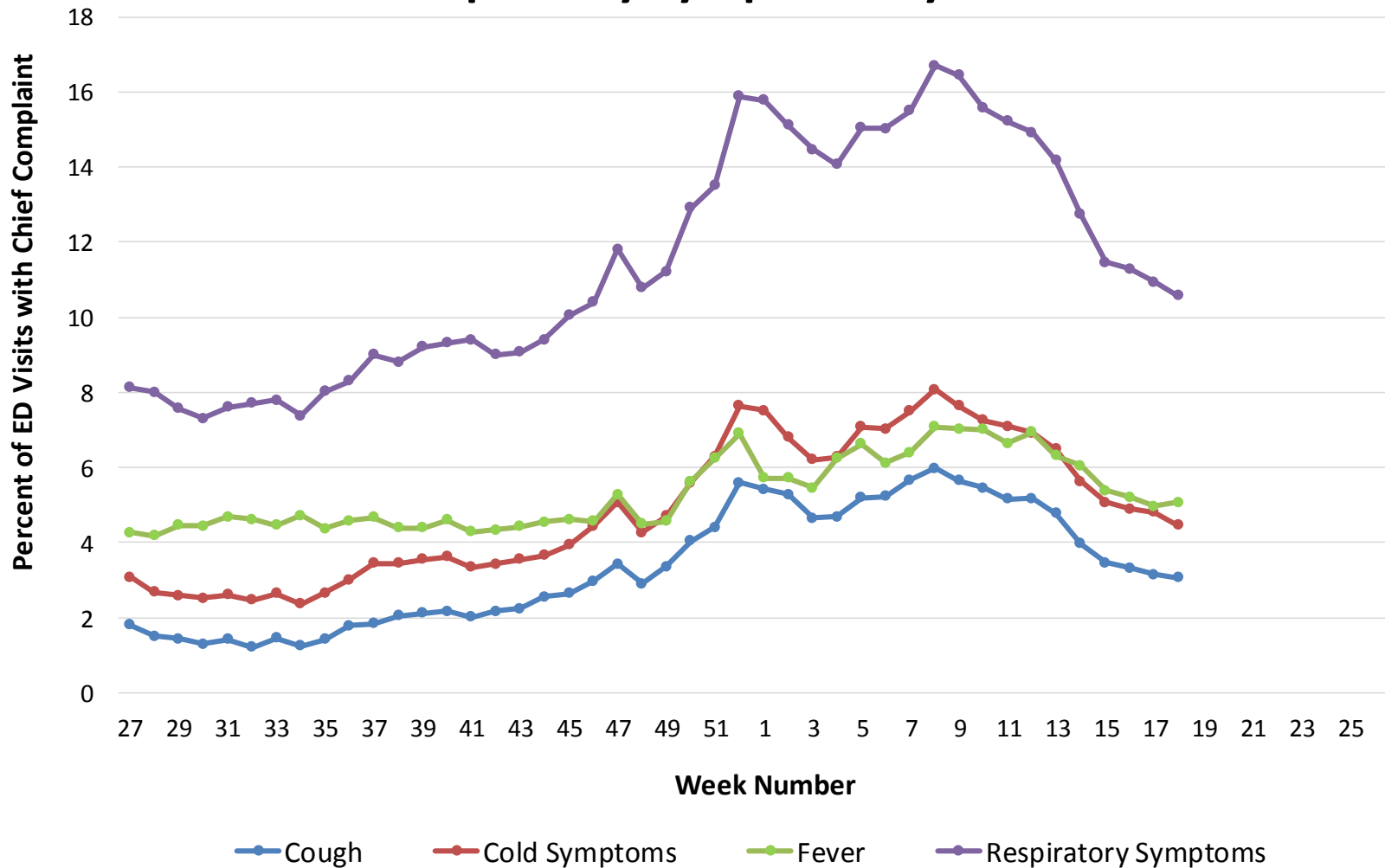


Preliminary Results

Data Source: San Diego Immunization Registry

Prepared by County of San Diego, Health & Human Services Agency,
 Public Health Services, Epidemiology and Immunization Services Branch

Figure 12. Percent of Emergency Department Visit Chief Complaints for Cough, Cold, Fever, or Respiratory Symptoms by Week.



Preliminary Results

Data Source: Reported Influenza Case Reports

Prepared by County of San Diego, Health & Human Services Agency,
Public Health Services, Epidemiology and Immunization Services Branch

INFLUENZA SURVEILLANCE UPDATE, 2018-19 YTD



Weekly Influenza Watch Surveillance Report

This is the final *Influenza Watch* surveillance report for this season.

If you have any comments or suggestions regarding the *Influenza Watch*, please email us at EpiDiv.HHSA@sdcounty.ca.gov.

A final influenza season summary will be available in July, and the weekly *Influenza Watch* reports will resume again in October, 2019.

Thank you!