

San Diego Refugee Health Assessment Program (RHAP)

Public Health Services

Tuberculosis Control and Refugee
Health Branch

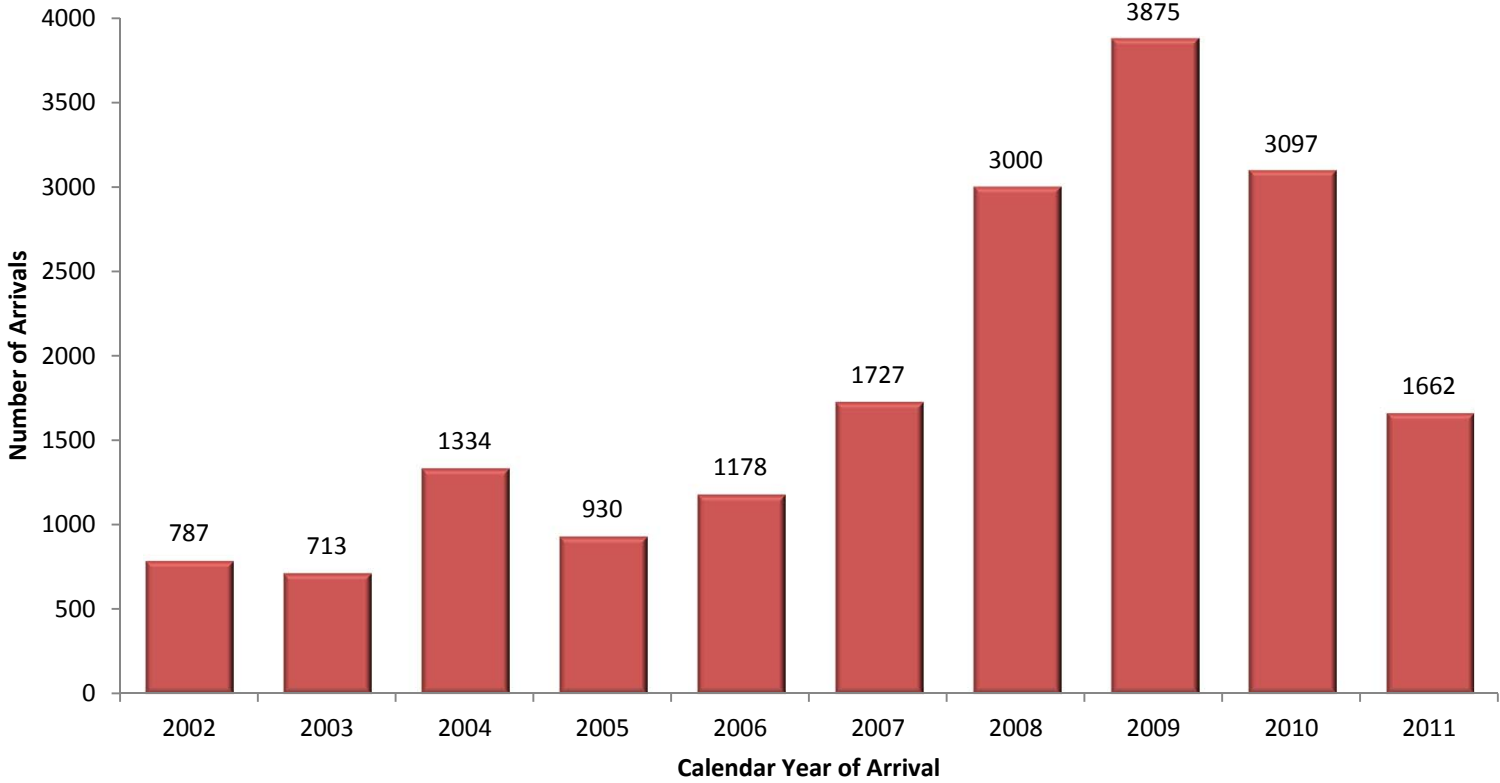
01/02/2013



San Diego Refugee Health Assessment Program (RHAP) Data

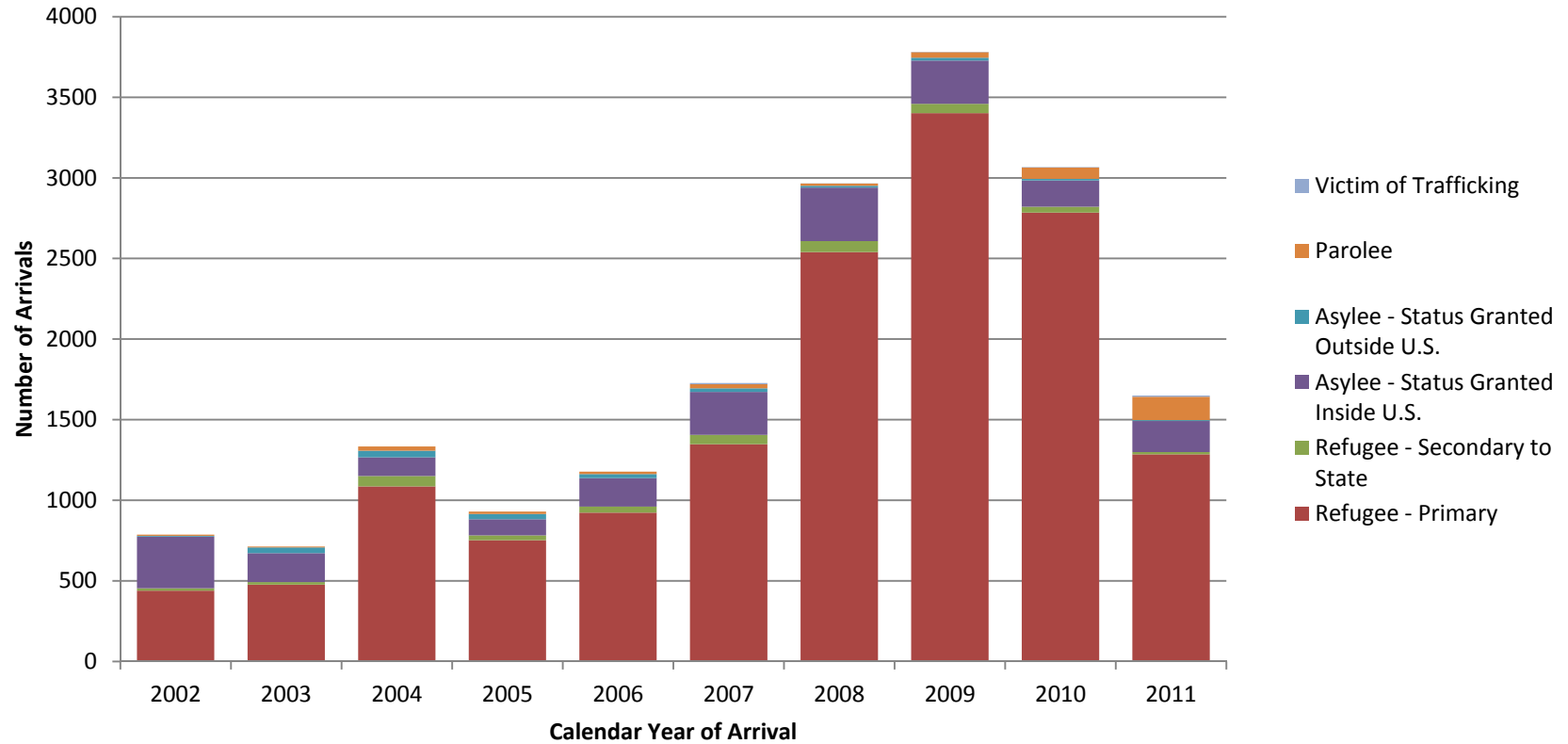
- Source of data: California Department of Public Health, Refugee Health Section
- Includes all persons eligible for screening by the San Diego County RHAP
 - [Refugees](#)
 - Primary
 - Secondary to State ([Secondary Migrants](#))
 - [Asylees](#)
 - [Parolees](#)
 - [Victims of Trafficking](#)

Arrivals Screened by the San Diego Refugee Health Assessment Program, 2002-2011



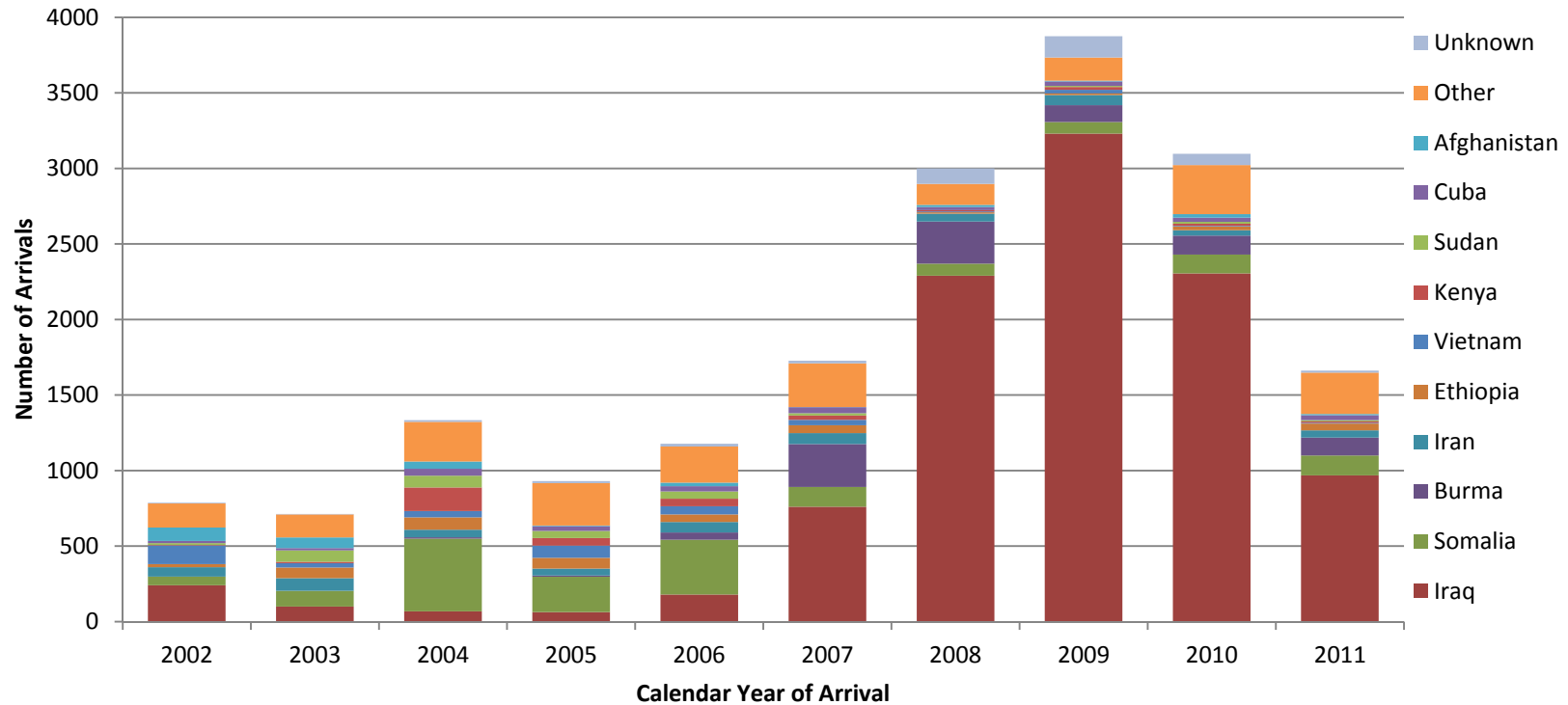
Source: California Department of Public Health, Refugee Health Section

Arrivals Screened by the San Diego County Refugee Health Assessment Program by Status, 2002-2011



Source: California Department of Public Health, Refugee Health Section

Arrivals Screened by the San Diego Refugee Health Assessment Program by Country of Birth, 2002-2011

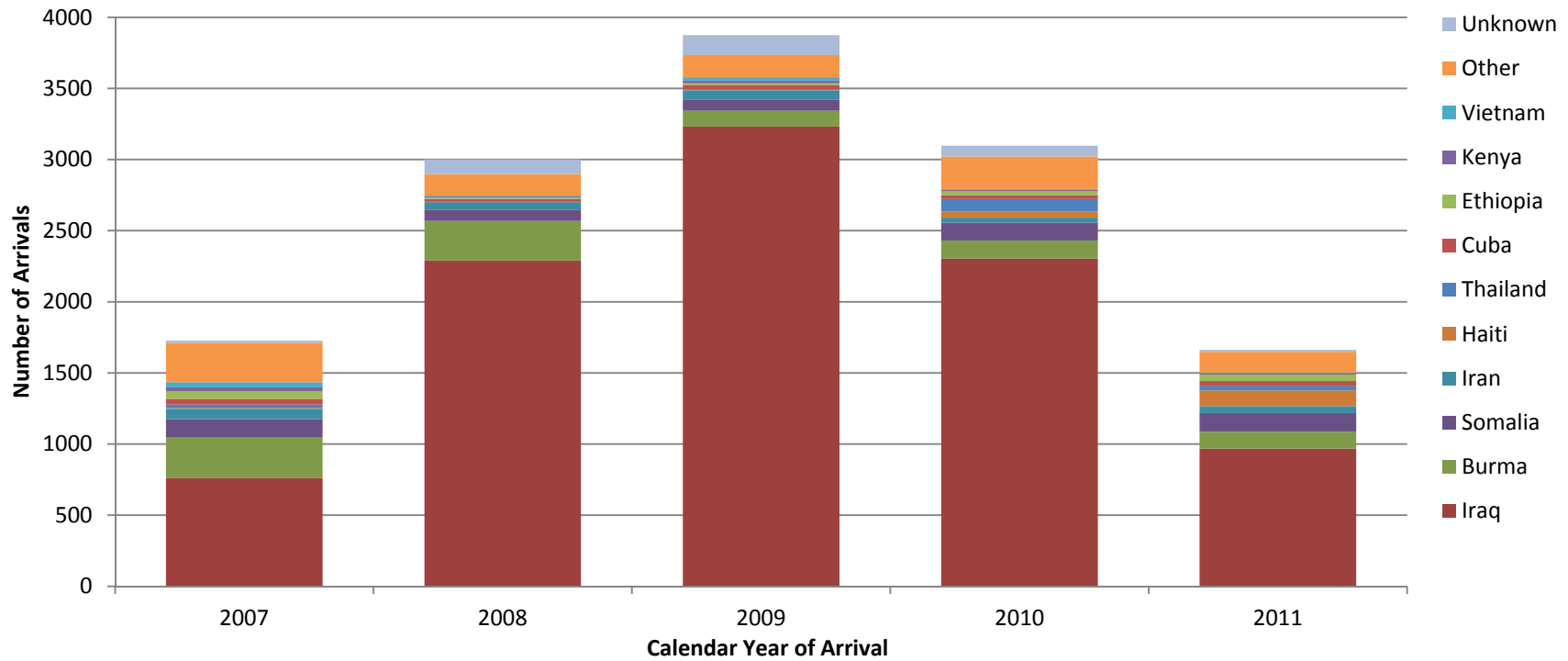


Other includes Albania, Algeria, Angola, Argentina, Armenia, Azerbaijan, Belarus, Benin, Bermuda, Bhutan, Bosnia and Herzegovina, Botswana, Bulgaria, Burundi, Cambodia, Cameroon, Central African Republic, Chad, China, Columbia, Congo, Costa Rica, Croatia, Djibouti, Egypt, Equatorial Guinea, El Salvador, Eritrea, Estonia, France, Gabon, Georgia, Germany, Ghana, Greece, Guatemala, Haiti, Iceland, Ireland, India, Indonesia, Ireland, Israel, Ivory Coast, Jamaica, Japan, Jordan, Kazakhstan, Kyrgyzstan, Democratic Peoples Republic of Korea, Kuwait, Laos, Latvia, Lebanon, Liberia, Libya, Malaysia, Maldives, Malta, Mauritania, Mexico, Moldova, Mongolia, Morocco, Mozambique, Namibia, Nepal, Nigeria, Oman, Pakistan, Peru, Philippines, Qatar, Romania, Russia, Rwanda, San Marino, Saudi Arabia, Serbia, Seychelles, Sierra Leone, Solomon Islands, Sri Lanka, Syria, Taiwan, Tajikistan, Tanzania, Thailand, Togo, Turkey, Turkmenistan, Uganda, Ukraine, United Arab Emirates, United Kingdom, Uzbekistan, West Bank, Yemen, Yugoslavia, Zambia, Zimbabwe

Top 10 countries of birth based on data 2002-2011.

Source: California Department of Public Health, Refugee Health Section

Arrivals Screened by the San Diego Refugee Health Assessment Program by Country of Birth, 2007-2011

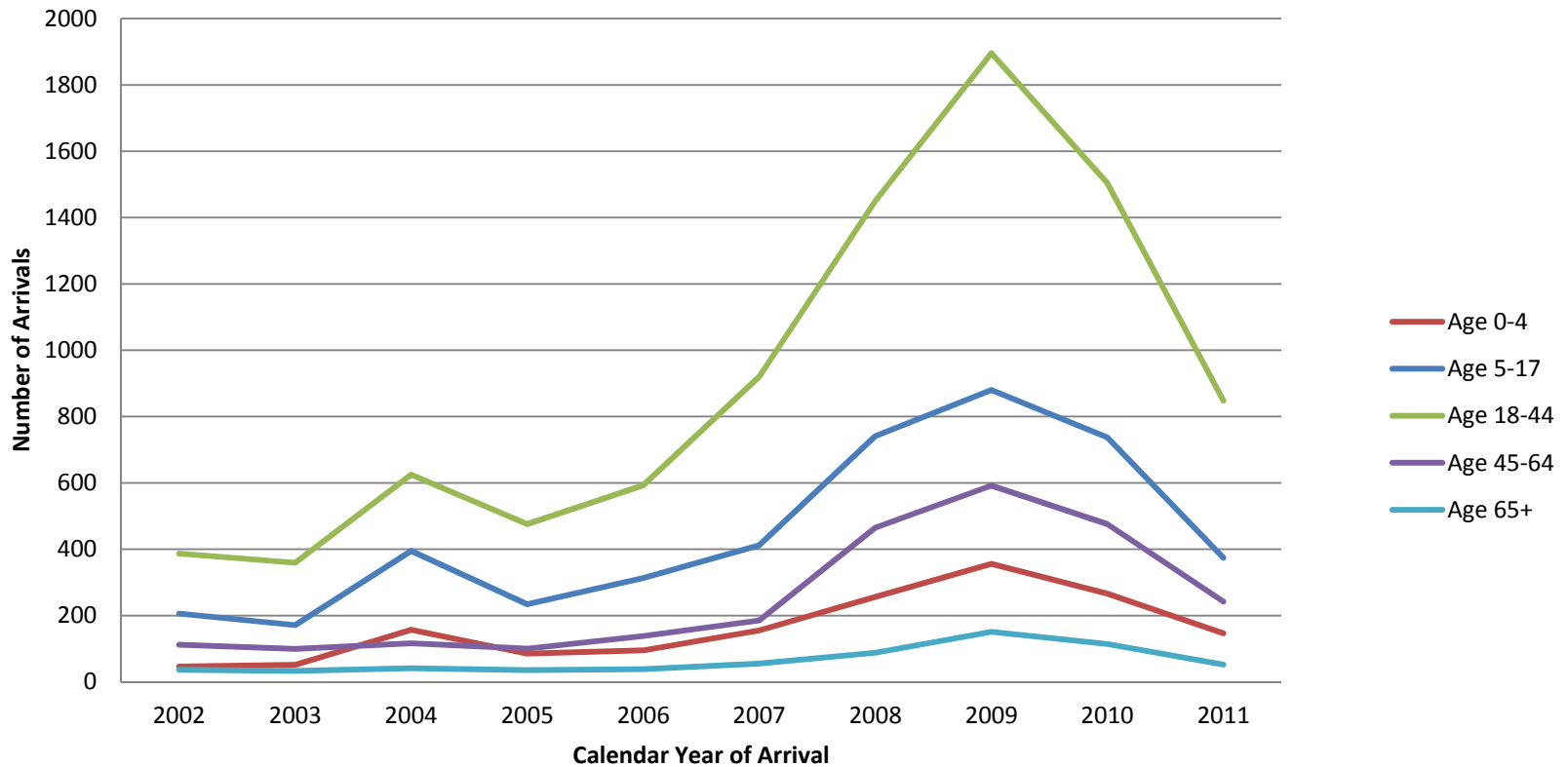


Other includes Afghanistan, Albania, Algeria, Armenia, Azerbaijan, Belarus, Benin, Bermuda, Bhutan, Bulgaria, Burundi, Cambodia, Cameroon, Central African Republic, Chad, China, Columbia, Congo, Djibouti, Egypt, Equatorial Guinea, El Salvador, Eritrea, France, Gabon, Georgia, Germany, Ghana, Greece, Guatemala, Iceland, Ireland, India, Indonesia, Ireland, Israel, Ivory Coast, Jamaica, Jordan, Kazakhstan, Kuwait, Lebanon, Liberia, Libya, Malaysia, Maldives, Malta, Mauritania, Mexico, Moldova, Morocco, Mozambique, Namibia, Nepal, Nigeria, Oman, Pakistan, Peru, Philippines, Qatar, Romania, Russia, Rwanda, San Marino, Saudi Arabia, Sudan, Syria, Taiwan, Tajikistan, Tanzania, Turkey, Turkmenistan, Uganda, Ukraine, United Arab Emirates, United Kingdom, Uzbekistan, West Bank, Yemen, Zambia

Top 10 countries of birth based on data 2007-2011.

Source: California Department of Public Health, Refugee Health Section

Arrivals Screened by the San Diego Refugee Health Assessment Program by Age, 2002-2011



Source: California Department of Public Health, Refugee Health Section

Contact Information

County of San Diego

Health and Human Services

Public Health Services

Tuberculosis Control and Refugee Health Branch

619-692-8636

www.sdcounty.ca.gov/hhsa/programs/phs/tuberculosis_control_program/refugee_health_programs.html