



# County of San Diego Monthly STD Report

Issue No. 14: Data through February 28, 2010; Report prepared April 30, 2010.



Table 1. STDs reported among San Diego County residents, by month (February 2010), and year to date.

	2010		2009	
	Feb	YTD	Feb	YTD
Gonorrhea	149	277	142	295
Female age 18-25	23	49	26	47
Female age ≤ 17	1	4	6	10
Male rectal gonorrhea	23	39	15	39
Chlamydia	862	2050	1175	2405
Female age 18-25	375	930	532	1083
Female age ≤ 17	93	181	102	212
Male rectal chlamydia	20	51	26	56
Early Syphilis (adult total)	32	64	38	81
Primary	5	15	7	13
Secondary	11	20	14	36
Early latent	16	29	17	32
Neurosyphilis*	0	0	0	0
Congenital syphilis	1	1	2	2
Pelvic Inflammatory Disease	5	13	12	17
HIV Infection				
HIV (not AIDS)	44	78	49	97
AIDS	39	68	42	96

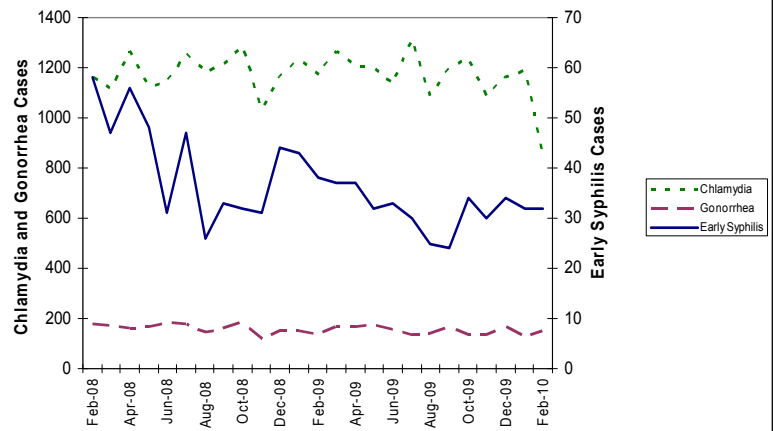
YTD: Year to Date

\*Includes confirmed and probable cases of neurosyphilis among cases of early syphilis only.

Table 2. Selected STD cases and rates per 100,000 population for San Diego County by age and race/ethnicity, February 2010.

	(All races)		Asian/PI		African American		Hispanic		White	
	cases	rate	cases	rate	cases	rate	cases	rate	cases	rate
<b>All ages</b>										
Chlamydia	2050	64.6	63	1.9	176	105.7	380	39.6	243	15.4
Gonorrhea	277	8.7	15	0.4	31	18.6	44	4.6	47	3.0
Early syphilis	64	2.0	1	0.0	9	5.4	25	2.6	29	1.8
<b>Under 20 yrs</b>										
Chlamydia	552	62.7	18	21.7	65	127.6	130	332.9	48	13.9
Gonorrhea	24	2.7	2	2.4	4	7.8	3	7.7	2	0.6
Early syphilis	0	0.0	0	0.0	0	0.0	0	0.0	0	0.0

Figure 1. STDs reported among San Diego County residents, by month. Scale for syphilis\* is different.



\*Syphilis includes primary, secondary and early latent syphilis.

### Key Points

#### Comparing 2010 with 2009:

- Early syphilis cases declined 21%
- Gonorrhea cases declined 6%
- Chlamydia cases declined 15%

*Note: All data are provisional. Morbidity is based on date of diagnosis. If date of diagnosis is not available, date of specimen collection is used. Totals for past months might change because of delays in reporting from labs and providers.*

## EDITORIAL NOTE: HIV Incidence Surveillance (HIS) and the Health Care Provider

Developed by the Centers for Disease Prevention and Control (CDC) and recently launched in California, HIV Incidence Surveillance (HIS) is a system designed to estimate the number of new HIV infections per year. Since it is not uncommon for people to be diagnosed with HIV long after they are infected, current surveillance systems do not allow good estimates either at the state or local level. Understanding more about new HIV infections helps to target prevention and treatment and care efforts to those most affected by the epidemic.

HIS uses the Serologic Testing Algorithm for Recent HIV Seroconversion (STARHS) to distinguish between recent and long-term infections. STARHS results indicating probable recent infection are statistically weighted using patient HIV testing and treatment history to estimate the number of new HIV infections in the population. These estimates help to monitor trends in HIV transmission, target prevention resources to populations most heavily affected and evaluate HIV prevention programs, nationwide, statewide and at the local level.

Patient HIV testing and treatment history, which can only be gathered by the health care provider, is critical to HIS. Testing and treatment history consists of a few questions about the frequency of HIV testing and any recent antiretroviral use. Clinicians making a diagnosis of HIV infection can assist in this effort by collecting the testing and treatment information. The form for submitting that information is available at [www.sdhivaid.org](http://www.sdhivaid.org). County of San Diego surveillance staff can collect the HIS information during arranged visits or the form can be sent with completed case reports to:

Michael Bursaw  
 County of San Diego, Epidemiology and Immunization Services  
 1700 Pacific Hwy, Rm. 107, MS: P577  
 San Diego, CA 92101

Routine HIV case surveillance does not provide an accurate picture of new HIV infections. HIS fills this gap with the help of the health care provider. For more information, call 619-515-6672. LF

California Department of Public Health/Office of AIDS HIS Homepage: [www.cdph.ca.gov/programs/aids/Pages/OAHISHome.aspx](http://www.cdph.ca.gov/programs/aids/Pages/OAHISHome.aspx)  
 County of San Diego, Epidemiology and Immunization Services, HIV/AIDS Epidemiology Unit: [www.sdhivaid.org](http://www.sdhivaid.org)

For more information about STD clinic hours: [www.STDSanDiego.org](http://www.STDSanDiego.org)

STD Clinical Consultation Pager: (877) 217-1816 (8 a.m.–5 p.m., Monday through Friday, except major holidays)

Provider STD Reporting: (619) 692-8520; fax (619) 692-8541

STD Clinic: (619) 692-8550; fax (619) 692-8543