



County of San Diego Monthly STD Report

Issue No. 17: Data through May 31, 2010; Report prepared July 30, 2010.



Table 1. STDs reported among San Diego County residents, by month (May 2010), and year to date.

	2010		2009	
	May	YTD	May	YTD
Gonorrhea	162	818	181	807
Female age 18-25	28	138	40	167
Female age ≤ 17	3	16	9	31
Male rectal gonorrhea	28	122	15	92
Chlamydia*	1304	5027	1209	4881
Female age 18-25	588	2291	557	2230
Female age ≤ 17	99	399	109	428
Male rectal chlamydia	31	112	26	104
Early Syphilis (adult total)	40	171	33	188
Primary	12	37	6	33
Secondary	20	67	17	83
Early latent	8	67	10	72
Neurosyphilis**	0	0	0	3
Congenital syphilis	0	1	3	7
Pelvic Inflammatory Disease	6	51	3	31
HIV Infection				
HIV (not AIDS)	44	218	64	251
AIDS	30	169	26	183

YTD: Year to Date

*Chlamydia data are only through April 2010, and are compared with April 2009.

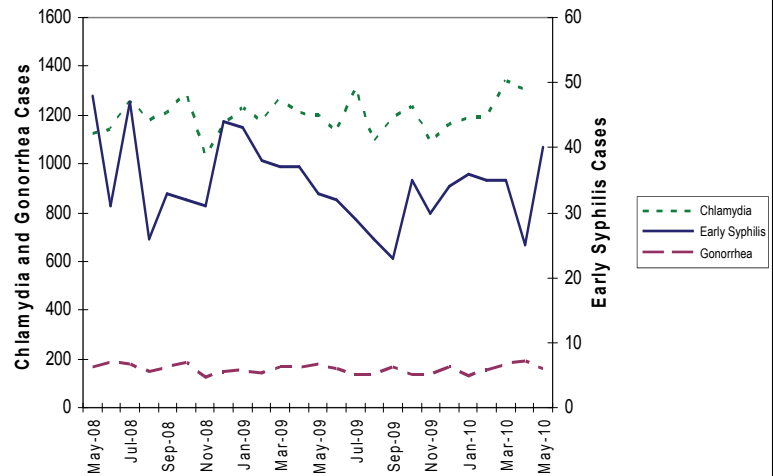
**Includes confirmed and probable cases of neurosyphilis among cases of early syphilis only.

Table 2. Selected STD cases and rates per 100,000 population for San Diego County by age and race/ethnicity, by month.*

	(All races)		Asian/PI		African American		Hispanic		White	
	cases	rate	cases	rate	cases	rate	cases	rate	cases	rate
All ages										
Chlamydia*	5027	158.4	185	54.8	444	266.6	1060	110.5	676	42.8
Gonorrhea	818	25.8	28	8.3	93	55.9	118	12.3	154	9.8
Early syphilis	171	5.4	7	2.1	22	13.2	46	4.8	95	6.0
Under 20 yrs										
Chlamydia*	1308	148.6	38	45.9	157	308.1	352	901.4	136	39.4
Gonorrhea	85	9.7	2	2.4	19	37.3	19	48.7	5	1.4
Early syphilis	1	0.1	0	0.0	0	0.0	0	0.0	1	0.3

*Gonorrhea and early syphilis data are through May 2010. Chlamydia data are only through April 2010.

Figure 1. Chlamydia, early syphilis* and gonorrhea cases reported among San Diego County residents, by month.**



*Early syphilis includes primary, secondary and early latent syphilis.

**Gonorrhea and early syphilis data are through May 2010. Chlamydia data are only through April 2010.

Key Points, comparing 2010 with 2009

- Early syphilis declined 9%
- Overall, Chlamydia and gonorrhea are stable, but...
 - Gonorrhea in females age 18–25 declined 17%
 - Male rectal gonorrhea and Chlamydia increased 32% and 8%, respectively

Note: All data are provisional. Morbidity is based on date of diagnosis. If date of diagnosis is not available, date of specimen collection is used. Totals for past months might change because of delays in reporting from labs and providers.

EDITORIAL NOTE: HPV Vaccination — Recommendations and Availability

Two vaccines against human papillomavirus (HPV) infection, Gardasil® and Cervarix®, are licensed in the United States. Both protect against HPV types 16 and 18, which cause most cervical cancers, are administered in a series of three doses over six months, and are considered safe. Gardasil® also protects against HPV types 6 and 11, which cause most genital warts.

CDC recommends vaccination with either vaccine for females ages 11–26. For males, CDC does not recommend vaccination but states that males ages 9–26 may choose to get vaccinated with Gardasil® to prevent genital warts. To get the most benefit from HPV vaccination, persons should complete all three doses before sexual activity begins. Those vaccinated thereafter, however, can still benefit.

All County of San Diego Public Health Centers (PHCs) offer Gardasil® for free (plus a waiveable \$10 co-pay for each dose) to females and males ages 9–18 who qualify for the Vaccines for Children (VFC) program, which supplies vaccine for low income and uninsured persons. Parental consent is required for those 17 and younger. Patients who turn 19 before completing the series must complete the series elsewhere. County of San Diego PHCs do not offer Cervarix® at this time. County of San Diego STD Clinics (which are different from County of San Diego PHCs) do not offer either HPV vaccine at this time.

Merck and GSK, the manufacturers of Gardasil® and Cervarix®, respectively, have patient assistance programs that provide vaccines free of charge to persons meeting certain criteria. Providers, however, may charge a fee for vaccine administration. KWM/LB/KK

County of San Diego immunization services: www.co.san-diego.ca.us/hhsa/programs/phs/immunization_branch/immunization_clinic_schedule.html

HPV vaccination information from CDC: www.cdc.gov/vaccines/vpd-vac/hpv/default.htm#safety

Merck program: www.merck.com/merckhelps/vaccines/home.html

GSK program: www.gsk-vap.com

Information about the County of San Diego STD Clinics: www.STDSanDiego.org

STD Clinical Consultation Pager: (877) 217-1816 (8 a.m.–5 p.m., M–F, except major holidays)

Provider STD Reporting: (619) 692-8520; fax (619) 692-8541

STD Clinic: (619) 692-8550; fax (619) 692-8543