



County of San Diego Monthly STD Report

Issue No. 20: Data through August 31, 2010; Report prepared October 29, 2010.



Table 1. STDs reported among San Diego County residents, by month (August 2010), and year to date.

	2010		2009	
	Aug	YTD	Aug	YTD
Gonorrhea	172	1344	138	1241
Female age 18-25	20	220	27	258
Female age ≤ 17	2	25	7	50
Male rectal gonorrhea	35	204	10	138
Chlamydia*	1253	8952	1316	8528
Female age 18-25	577	4024	583	3882
Female age ≤ 17	74	677	102	723
Male rectal chlamydia	37	202	24	178
Early Syphilis (adult total)	40	278	26	275
Primary	6	57	4	48
Secondary	19	112	13	131
Early latent	15	109	9	96
Neurosyphilis**	1	3	0	4
Congenital syphilis	0	1	0	8
Pelvic Inflammatory Disease	5	86	6	52
HIV Infection				
HIV (not AIDS)	26	326	55	406
AIDS	27	253	40	305

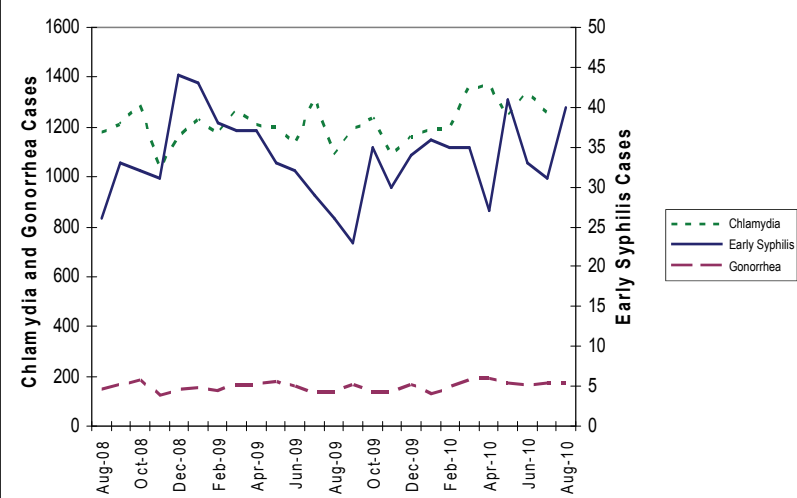
YTD: Year to Date
 *Chlamydia data are only through July 2010, and are compared with July 2009.

Table 2. Selected STD cases and rates per 100,000 population for San Diego County by age and race/ethnicity, by month.*

	(All races)		Asian/PI		African American		Hispanic		White	
	cases	rate	cases	rate	cases	rate	cases	rate	cases	rate
All ages										
Chlamydia*	8952	282.1	409	121.3	829	497.9	1854	193.3	1217	77.1
Gonorrhea	1344	42.4	54	16.0	155	93.1	199	20.7	268	17.0
Early syphilis	278	8.8	9	2.7	41	24.6	75	7.8	149	9.4
Under 20 yrs										
Chlamydia*	2201	250.0	74	89.3	276	541.6	586	1500.6	228	66.1
Gonorrhea	139	15.8	2	2.4	37	72.6	30	76.8	9	2.6
Early syphilis	3	0.3	0	0.0	1	2.0	1	2.6	1	0.3

*Gonorrhea and early syphilis data are through August 2010. Chlamydia data are only through July 2010.

Figure 1. Chlamydia, early syphilis* and gonorrhea cases reported among San Diego County residents, by month.**



*Early syphilis includes primary, secondary and early latent syphilis.
 **Gonorrhea and early syphilis data are through August 2010. Chlamydia data are only through July 2010.

Key Points, comparing 2010 with 2009

- Early syphilis is stable
- Chlamydia has increased 5%, but...
 - Chlamydia in females 17 and under declined 6%
- Gonorrhea has increased 8%, and...
 - Male rectal gonorrhea has increased 47%

Note: All data are provisional. Morbidity is based on date of diagnosis. If date of diagnosis is not available, date of specimen collection is used. Totals for past months might change because of delays in reporting from labs and providers.

Editorial Note: Clinical Services Provided by County of San Diego STD Clinics

The County of San Diego's four STD clinics have approximately 17,000 patients visits each year. Clinics are staffed by physicians and/or nurse practitioners, operate on a drop-in basis and occasionally reach capacity prior to closing. Clients are asked to pay a \$15 fee that covers an examination, appropriate STD tests, and treatment. Fees can be waived for patients unable to pay.

Clinicians referring patients to an STD clinic should let patients know that an STD clinic clinician will take a history, perform a physical examination, and order appropriate laboratory tests prior to making a treatment decision and providing treatment. To facilitate patient management, clinicians referring patients to a County STD clinic should fax documentation of history, physical examination findings, laboratory results, and any prior treatment to the appropriate clinic's confidential fax number prior to the patient's arrival (Table 3).

Clinicians in San Diego County with questions regarding STD diagnosis or treatment should page the County's STD clinical consultation pager, staffed during normal business hours, at (877) 217-1816./EP

Table 3. County of San Diego STD clinic locations, hours and contact information.

Location	Contact	Hours	Services Offered
County Health Services Complex 3851 Rosecrans Street San Diego, 92110	(619) 692-8865; Fax (619) 692-8543	M, Tu, W, F: 7:30 a.m.– 4 p.m.; Th: 10 a.m.– 4 p.m.	STD testing and treatment*, including rapid tests for diagnosis of syphilis (rapid RPR, darkfield microscopy) and gonorrhea (Gram stain); standard and rapid HIV testing; Hepatitis A and B vaccination.**
North Coastal Regional Public Health Center 104 South Barnes Street Oceanside, 92054	(760) 967-4401; Fax (760) 967-4644	W: 12:30 p.m.– 7:30 p.m.	STD testing and treatment*; standard HIV testing; Hepatitis A and B vaccination.**
Central Region Public Health Center 5205 University Avenue San Diego, 92105	(619) 229-5400; Fax (619) 229-5439	Tu: 1 p.m.– 7 p.m.; F: 10 a.m.– 4 p.m.	STD testing and treatment*; standard and rapid HIV testing; Hepatitis A and B vaccination.**
South Region Public Health Center 690 Oxford Drive Chula Vista, 91911	(619) 409-3110; Fax (619) 409-3113	Th: 12 p.m. – 6 p.m.	STD testing and treatment*; standard HIV testing; Hepatitis A and B vaccination.**

*STD testing includes nucleic acid amplification tests for gonorrhea and chlamydia, serologic tests for syphilis, herpes culture, hepatitis B and C serologic testing, and wet mount microscopy for trichomoniasis, bacterial vaginosis, and candidiasis. STD testing is based on risk assessment and clinical signs and symptoms; not all patients are necessarily tested for all STDs.

**Some clinics also offer influenza vaccine and tetanus, diphtheria, pertussis (tdap) vaccine. Call for details.

Information about the County of San Diego STD Clinics: www.STDSanDiego.org
 STD Clinical Consultation Pager: (877) 217-1816 (8 a.m.–5 p.m., M–F, except major holidays)

Provider STD Reporting: (619) 692-8520; fax (619) 692-8541
 STD Clinic: (619) 692-8550; fax (619) 692-8543