



County of San Diego Monthly STD Report

Issue No. 21: Data through September 30, 2010; Report prepared November 30, 2010.



Table 1. STDs reported among San Diego County residents, by month (September 2010), and year to date.

	2010		2009	
	Sep	YTD	Sep	YTD
Gonorrhea	198	1542	165	1406
Female age 18-25	26	247	36	294
Female age ≤17	3	28	2	52
Male rectal gonorrhea	30	234	23	161
Chlamydia*	1345	10302	1087	9615
Female age 18-25	556	4579	512	4394
Female age ≤17	107	785	96	819
Male rectal chlamydia	35	237	22	200
Early Syphilis (adult total)	35	316	23	297
Primary	10	69	2	49
Secondary	13	124	14	145
Early latent	12	123	7	103
Neurosyphilis**	0	4	1	5
Congenital syphilis	0	1	1	9
Pelvic Inflammatory Disease	13	104	8	60
HIV Infection				
HIV (not AIDS)	48	374	36	442
AIDS	24	277	33	338

YTD: Year to Date

*Chlamydia data are only through August 2010, and are compared with August 2009.

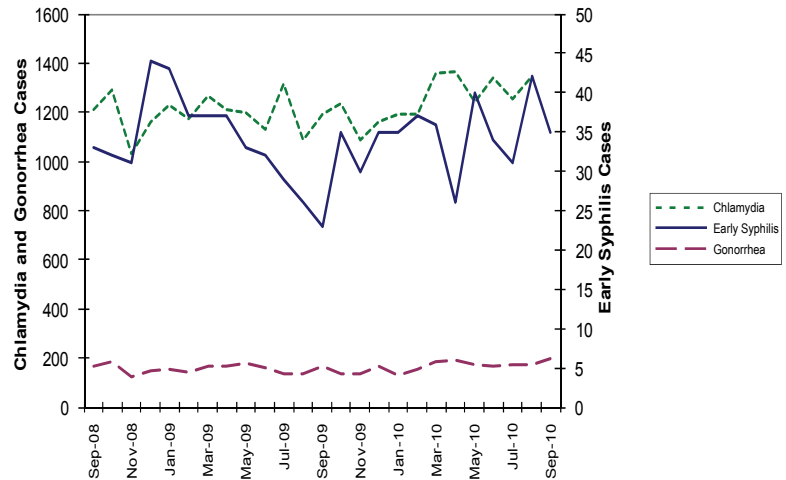
**Includes confirmed and probable cases of neurosyphilis among cases of early syphilis only.

Table 2. Selected STD cases and rates per 100,000 population for San Diego County by age and race/ethnicity, by month.*

	(All races)		Asian/PI		African American		Hispanic		White	
	cases	rate	cases	rate	cases	rate	cases	rate	cases	rate
All ages										
Chlamydia*	10302	324.6	476	141.1	954	572.9	2129	222.0	1390	88.0
Gonorrhea	1542	48.6	63	18.7	175	105.1	229	23.9	310	19.6
Early syphilis	316	10.0	11	3.3	46	27.6	85	8.9	168	10.6
Under 20 yrs										
Chlamydia*	2525	286.8	83	100.2	312	612.3	670	1715.7	257	74.5
Gonorrhea	163	18.5	2	2.4	42	82.4	34	87.1	14	4.1
Early syphilis	4	0.5	0	0.0	1	2.0	2	5.1	1	0.3

*Gonorrhea and early syphilis data are through September 2010. Chlamydia data are only through August 2010.

Figure 1. Chlamydia, early syphilis* and gonorrhea cases reported among San Diego County residents, by month.**



*Early syphilis includes primary, secondary and early latent syphilis.

**Gonorrhea and early syphilis data are through September 2010. Chlamydia data are only through August 2010.

Key Points, comparing 2010 with 2009

- Early syphilis has increased 6%
- Chlamydia has increased 7%, but...
 - Chlamydia in females 17 and under declined 4%
- Gonorrhea has increased 9%, and...
 - Male rectal gonorrhea has increased 45%

Note: All data are provisional. Morbidity is based on date of diagnosis. If date of diagnosis is not available, date of specimen collection is used. Totals for past months might change because of delays in reporting from labs and providers.

Editorial Note: County of San Diego HIV Partner Services

HIV Partner Services (PS) is a free, confidential and anonymous service provided by the County of San Diego that assists people with HIV in notifying sex and/or needle sharing partners of a possible exposure to HIV. An estimated one in five HIV-positive individuals is unaware of their status. PS is a powerful tool to reach both unaware individuals and those at highest risk of infection, providing HIV testing and also referral to care and/or prevention services, thereby reducing further transmission of HIV.

Several PS options are available to assist HIV-positive persons with the difficult decision of disclosing their status to sex partner(s), and County public health advisors will take the time with each person to determine which option may be best for them. Anonymous, or third-party notification, is one highly effective PS option for HIV-positive persons who want to inform their past and/or current partner(s) of their potential exposure to HIV while remaining anonymous. HIV-positive persons can also receive counseling on how to disclose their HIV-positive status to their current partner or receive support and assistance while disclosing.

County public health advisors can assist HIV-positive persons who choose to take advantage of PS by informing their sexual and/or needle-sharing partner(s) about a possible exposure to HIV. In a private setting or over the phone, public health advisors interview the HIV-positive individual about recent behaviors, and ask the patient to share contact information about the partner(s). Locatable partners are then contacted and informed that they may have been exposed to HIV. During the notification no names or identifiers, including date or place of exposure, are ever revealed to the partner in order to maintain the anonymity and privacy of the person wishing to disclose his or her status. The partner is offered free HIV testing and risk reduction counseling at a County testing site where they will have access to rapid HIV antibody testing and STD screening. If the antibody test is preliminary positive, a confirmatory test is done, and referrals to medical care are made. If appropriate, referrals to substance use and mental health programs are offered.

Providers treating people living with HIV can help prevent HIV transmission by talking about PS with patients. By doing so providers can play a vital role in helping people with undiagnosed HIV learn of their infected status and access care and treatment.

To make a referral, please call (619) 692-8501 and ask to speak with a County health advisor./TG/HA

Information about the County of San Diego STD Clinics: www.STDSanDiego.org
 STD Clinical Consultation Pager: (877) 217-1816 (8 a.m.–5 p.m., M–F, except major holidays)

Provider STD Reporting: (619) 692-8520; fax (619) 692-8541
 STD Clinic: (619) 692-8550; fax (619) 692-8543