



County of San Diego Monthly STD Report

Issue No. 22: Data through October 31, 2010; Report prepared December 30, 2010.



Table 1. STDs reported among San Diego County residents, by month (October 2010), and year to date.

	2010		2009	
	Oct	YTD	Oct	YTD
Gonorrhea	173	1723	137	1543
Female age 18-25	30	279	29	323
Female age ≤17	3	31	1	53
Male rectal gonorrhea	32	266	16	177
Chlamydia*	1304	11621	1195	10810
Female age 18-25	614	5201	527	4921
Female age ≤17	80	864	104	923
Male rectal chlamydia	39	276	28	228
Early Syphilis (adult total)	27	346	36	333
Primary	7	77	9	58
Secondary	10	136	15	160
Early latent	10	133	12	115
Neurosyphilis**	0	4	0	5
Congenital syphilis	0	1	1	10
Pelvic Inflammatory Disease	11	119	6	66
HIV Infection				
HIV (not AIDS)	40	414	50	492
AIDS	25	302	34	372

YTD: Year to Date

*Chlamydia data are only through September 2010, and are compared with September 2009.

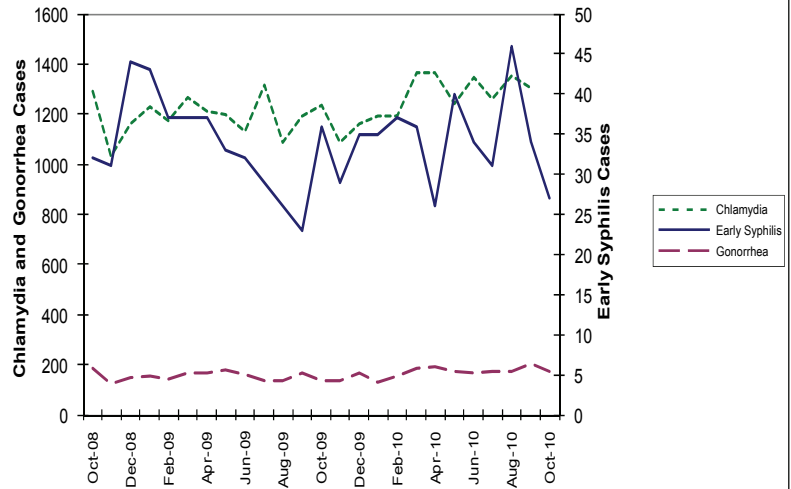
**Includes confirmed and probable cases of neurosyphilis among cases of early syphilis only.

Table 2. Selected STD cases and rates per 100,000 population for San Diego County by age and race/ethnicity, by month.*

	(All races)		Asian/PI		African American		Hispanic		White	
	cases	rate	cases	rate	cases	rate	cases	rate	cases	rate
All ages										
Chlamydia*	11621	366.2	533	158.0	1066	640.2	2400	250.2	1593	100.9
Gonorrhea	1723	54.3	71	21.0	202	121.3	261	27.2	352	22.3
Early syphilis	346	10.9	11	3.3	48	28.8	94	9.8	187	11.8
Under 20 yrs										
Chlamydia*	2831	321.5	94	113.4	346	679.0	736	1884.8	303	87.8
Gonorrhea	184	20.9	4	4.8	49	96.2	39	99.9	16	4.6
Early syphilis	5	0.6	0	0.0	2	3.9	2	5.1	1	0.3

*Gonorrhea and early syphilis data are through October 2010. Chlamydia data are only through September 2010.

Figure 1. Chlamydia, early syphilis* and gonorrhea cases reported among San Diego County residents, by month.**



*Early syphilis includes primary, secondary and early latent syphilis.

**Gonorrhea and early syphilis data are through October 2010. Chlamydia data are only through September 2010.

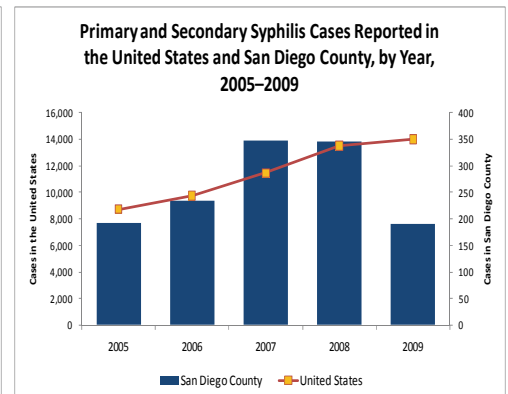
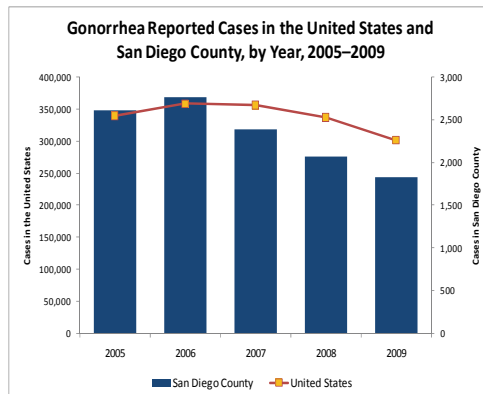
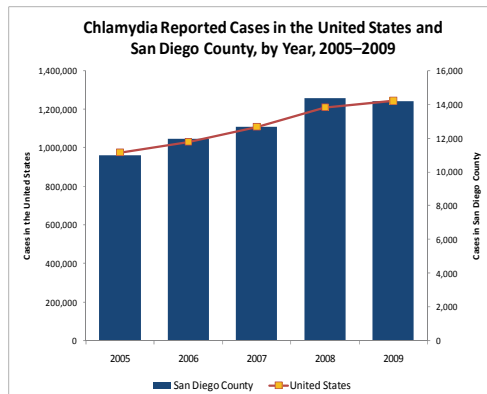
Key Points, comparing 2010 with 2009

- Early syphilis has increased 4%
- Chlamydia has increased 7%, but...
 - Chlamydia in females 17 and under declined 6%
- Gonorrhea has increased 12%, and...
 - Male rectal gonorrhea has increased 50%

Note: All data are provisional. Morbidity is based on date of diagnosis. If date of diagnosis is not available, date of specimen collection is used. Totals for past months might change because of delays in reporting from labs and providers.

Editorial Note: Trends in Major Reportable STDs in San Diego County, 2009

In November 2010 the Centers for Disease Control and Prevention (CDC) published its annual surveillance summary for reportable STDs in the United States. The three major reportable STDs are chlamydia, gonorrhea, and syphilis. As shown below, in the United States from 2008 to 2009 chlamydia increased 2.8%, gonorrhea decreased 10.5%, and primary and secondary (P&S) syphilis increased 3.7%. In San Diego County from 2008 to 2009 chlamydia, gonorrhea, and P&S syphilis all declined, 1.4%, 11.5%, and 44.9%, respectively. To ensure accurate tracking of STDs in San Diego County, healthcare providers and laboratories must report suspected and diagnosed cases of all reportable STDs in County residents to the County of San Diego. Information on STD reporting, including reporting forms, time frames for reporting, and a list of reportable diseases, is available by clicking the "Disease Reporting Information" link at www.STDSanDiego.org. The full CDC report is available at www.cdc.gov/std/stats/_JKK



Information about the County of San Diego STD Clinics: www.STDSanDiego.org
 STD Clinical Consultation Pager: (877) 217-1816 (8 a.m.–5 p.m., M–F, except major holidays)

Provider STD Reporting: (619) 692-8520; fax (619) 692-8541
 STD Clinic: (619) 692-8550; fax (619) 692-8543