



County of San Diego Monthly STD Report

Issue No. 33: Data through September 30, 2011; Report prepared November 30, 2011.



Table 1. STDs reported among San Diego County residents, by month (September 2011), and year to date.

	2011		2010	
	Sep	YTD	Sep	YTD
Gonorrhea	225	1578	201	1529
Female age 18-25	27	254	28	247
Female age ≤17	5	45	3	28
Male rectal gonorrhea	36	255	30	234
Chlamydia*	1417	10162	1364	10274
Female age 18-25	630	4528	568	4569
Female age ≤17	106	729	106	779
Male rectal chlamydia	28	277	35	235
Early Syphilis (adult total)	46	335	40	334
Primary	20	89	9	70
Secondary	15	128	16	133
Early latent	11	118	15	131
Neurosyphilis**	0	3	1	5
Congenital syphilis	0	0	2	7
HIV Infection				
HIV (not AIDS)	33	354	48	374
AIDS	20	192	24	277

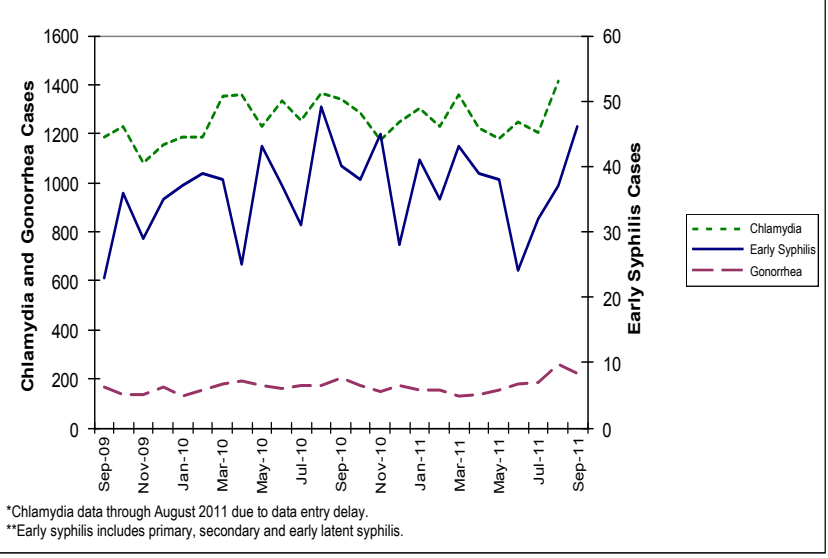
YTD: Year to Date
 *Chlamydia data through August 2011 due to data entry delay, with comparison data through August 2010.
 **Includes confirmed and probable cases of neurosyphilis among cases of early syphilis only.

Table 2. Selected STD cases and rates per 100,000 population for San Diego County by age and race/ethnicity, and year to date.

	(All races)		Asian/PI		African American		Hispanic		White	
	cases	rate	cases	rate	cases	rate	cases	rate	cases	rate
All ages										
Chlamydia*	10162	315.2	349	100.2	845	505.0	2112	213.9	1512	95.3
Gonorrhea	1578	48.9	51	14.6	187	111.8	254	25.7	350	22.1
Early syphilis	335	10.4	16	4.6	34	20.3	100	10.1	171	10.8
Under 20 yrs										
Chlamydia*	2336	266.1	49	58.5	274	556.0	607	170.6	265	78.6
Gonorrhea	179	20.4	4	4.8	38	77.1	38	10.7	17	5.0
Early syphilis	10	1.1	1	1.2	5	10.1	2	0.6	2	0.6

*Chlamydia data through August 2011 due to data entry delay.

Figure 1. Chlamydia*, early syphilis and gonorrhea cases reported among San Diego County residents, by month.**



*Chlamydia data through August 2011 due to data entry delay.
 **Early syphilis includes primary, secondary and early latent syphilis.

Key Points, comparing reported cases in 2011 with 2010

- Overall chlamydia is stable, but...
 - Chlamydia in females ≤ 17 has decreased 6%.
 - Male rectal chlamydia has increased 18%.
- Early syphilis is stable.
- Overall, gonorrhea is stable, but...
 - Gonorrhea in females ≤ 17 has increased 61%.

Note: All data are provisional. Morbidity is based on date of diagnosis. If date of diagnosis is not available, date of specimen collection is used. Totals for past months might change because of delays in reporting from labs and providers.

Editorial Note: The Medical Monitoring Project (MMP)

The Medical Monitoring Project (MMP) is a routine surveillance project designed to learn more about the experiences and needs of people who are receiving care for HIV/AIDS. MMP operates in 23 sites across the United States and territories, including San Diego County, and is sponsored by the Centers for Disease Control and Prevention (CDC). The primary aim of MMP is to obtain representative data on a probability sample of HIV-infected persons receiving care in order to provide generalizable estimates on care and prevention services, met and unmet needs, co-morbidities, and risk behaviors. MMP employs a complex, three-tiered random sampling method drawing on project sites, HIV care facilities, and eligible adult patients. Data collection includes a survey, medical chart abstraction, and case report information.



MMP ensures that confidential participation is not burdensome to providers and patients alike. Facilities can be as involved as they so desire. Qualified field staff conducts all data collection activities, in English and Spanish. Both facilities and participants are compensated for their time. Facilities selected to participate are notified of their eligibility and approached by MMP staff in February or March each year.

Analyses on MMP data are now being disseminated, nationally and locally. Results are intended to be used by planning groups, service providers, and policy makers, among other stakeholders. More information, including California and national findings, can be found at <http://www.cdc.gov/hiv/topics/treatment/MMP>. For further information, questions, data requests, or more related to California MMP, please contact Dr. Mark Damesyn at the California Department of Public Health: mark.damesyn@cdph.ca.gov, or via 916.449.5827.

Information about the County of San Diego STD Clinics: www.STDSanDiego.org
 STD Clinical Consultation Pager: (877) 217-1816 (8 a.m.–5 p.m., M–F, except major holidays)

Provider STD Reporting: (619) 692-8520; fax (619) 692-8541
 STD Clinic: (619) 692-8550; fax (619) 692-8543