



County of San Diego Monthly STD Report

Issue No. 46: Data through October 31, 2012; Report released January 31, 2013.



Table 1. STDs reported among San Diego County residents, by month (October 2012) and year-to-date.

	2011		2012	
	Oct	YTD	Oct	YTD
Chlamydia*	1215	11410	1499	12996
Female age 18-25	535	5085	647	5666
Female age ≤17	79	792	82	545
Male rectal chlamydia	45	324	50	423
Gonorrhea	226	1780	272	2253
Female age 18-25	33	281	50	420
Female age ≤17	7	52	8	40
Male rectal gonorrhea	51	304	37	312
Early Syphilis (adult total)	26	382	39	438
Primary	8	101	10	96
Secondary	11	146	13	169
Early latent	7	135	16	173
Neurosyphilis**	0	4	0	6
Congenital syphilis	0	0	0	1
HIV Infection***				
HIV (not AIDS)	47	401	38	393
AIDS	25	217	22	231

YTD: Year to Date

*Chlamydia data through September 2012 due to data entry delay, with comparison data through September 2011.

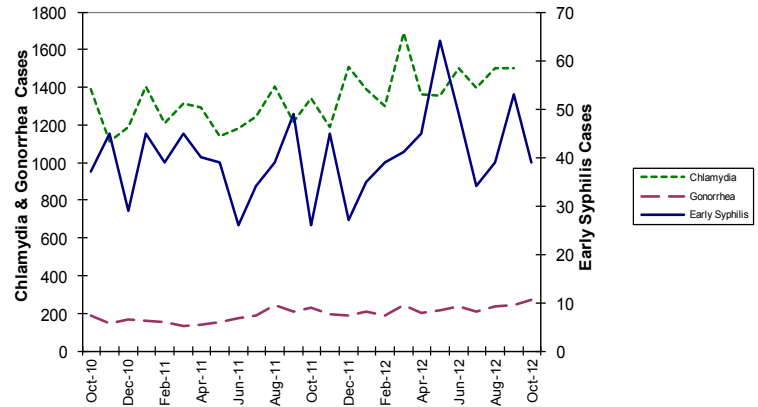
**Includes confirmed and probable cases of neurosyphilis among cases of early syphilis only.

***New infections are reported either as HIV or, if an individual was also diagnosed with AIDS within one month, as AIDS.

Please Note: Table 2 (STD cases and rates by age and race/ethnicity) is currently unavailable as 2012 data are being finalized. Please accept our apologies for this inconvenience.



Figure 1. Chlamydia,* gonorrhea and early syphilis** cases reported among San Diego County residents, by month.



*Chlamydia data through September 2012 due to data entry delay.
**Early syphilis includes primary, secondary and early latent syphilis.

Key Points comparing YTD cases reported through October 2011 to October 2012.

- Chlamydia has increased 13.9%.*
 - Female (≤17) chlamydia has decreased 31.2%.*
 - Male rectal chlamydia has increased 30.6%.*
- Gonorrhea has increased 26.6%.
 - Female (18-25) gonorrhea has increased 49.5%.
 - Female (≤17) gonorrhea has decreased 23.1%.
- Early syphilis has increased 14.7%.

*Data compares September 2011 to September 2012.

Note: All data are provisional. Case count is based on the earliest of date of diagnosis, date of specimen collection and treatment date. Totals for past months might change because of delays in reporting from labs and providers.

Editorial Note: The California STD/HIV Prevention Training Center

The California STD/HIV Prevention Training Center (CA PTC) is part of a national network of training centers offering dynamic continuing education. The CA PTC provides trainings that are designed to meet the needs of a wide array of medical, health promotion and community professionals serving persons and communities impacted by STDs and HIV. Courses offered include:

- **Clinical Training Courses:** Provides up-to-date information to public and private clinicians who diagnose, treat, and manage patients with STDs in private and public settings.
- **Behavioral Intervention Training Courses:** Provides training on several evidence-based behavioral interventions from the CDC's Diffusion of Effective Behavioral Interventions (DEBI) Project, as well as courses that seek to develop skills to support successful implementation of these interventions.
- **Capacity Building Assistance:** Builds the capacity of health departments and community-based organizations to implement, monitor, and evaluate evidence-based interventions, public health strategies, and comprehensive HIV prevention programs. Services include one-on-one technical consultations and skills-based trainings.
- **Partner Service & Program Support:** Courses are designed for federal, state, and local public health professionals, especially those working in STD/HIV prevention programs. Several courses focus on training to help develop the skills of disease intervention specialists and prevention counselors; other courses are designed to support STD and HIV prevention programs at state, local, and community levels.



The CA PTC also houses a wealth of [resources](#), including curricula and educational materials available to download. [Online courses](#) are available for continuing education credit. For more information please visit the [CA PTC website \(http://stdhivtraining.org\)](#) or email captc@ucsf.edu.

Information about the County of San Diego STD Clinics: www.STDSanDiego.org
STD Clinical Consultation Pager: (877) 217-1816 (8 a.m.–5 p.m., M–F, except major holidays)

Provider STD Reporting: (619) 692-8520; fax (619) 692-8541
STD Clinic: (619) 692-8550; fax (619) 692-8543