



# County of San Diego Monthly STD Report

Issue No. 56: Data through August 31, 2013; Report released December 6, 2013.



Table 1. STDs reported among San Diego County residents, by month (August 2013) and year-to-date.

	2012		2013	
	Aug	YTD	Aug	YTD
Chlamydia*				
Female age 18-25				
Female age ≤17				
Male rectal chlamydia				
Gonorrhea	233	1694	202	1944
Female age 18-25	42	319	32	304
Female age ≤17	2	29	2	31
Male rectal gonorrhea	30	236	34	272
Early Syphilis (adult total)	44	363	30	331
Primary	5	80	9	80
Secondary	17	139	13	138
Early latent	22	144	8	113
Neurosyphilis**	0	6	0	2
Congenital syphilis**	0	2	0	2
HIV Infection***				
HIV (not AIDS)	43	319	24	273
AIDS	13	189	20	205

YTD: Year to Date

\*Chlamydia data omitted due to data entry delay.

\*\*Includes confirmed and probable cases.

\*\*\*New infections are reported either as HIV or, if an individual was also diagnosed with AIDS within one month, as AIDS.

Table 2. Selected STD cases and annualized rates per 100,000 population for San Diego County, by age and race/ethnicity, year-to-date, 2013.

	All races*		Asian/PI		Black		Hispanic		White	
	cases	rate	cases	rate	cases	rate	cases	rate	cases	rate
All ages										
Chlamydia**										
Gonorrhea	1944	92.8	62	26.1	170	182.9	329	47.7	441	44.3
Early syphilis	331	15.8	16	6.7	24	25.8	108	15.6	170	17.1
Under 20 yrs										
Chlamydia**										
Gonorrhea	176	8.4	2	3.6	34	135.7	33	13.0	21	10.9
Early syphilis	4	0.7	0	0.0	1	4.0	2	0.8	1	0.5

Note: Rates calculated using 2012 SANDAG population estimates.

\*Includes cases denoted as "other" or "unknown" and for which no race/ethnicity data are specified.

\*\*Chlamydia data omitted due to data entry delay.

## Editorial Note: Minor Consent for STD-Related Medical Services

Adolescents and young adults (15-24 years of age) comprise 25% of the sexually active population, but account for nearly half of all new STD cases nationwide, according to the [Centers for Disease Control and Prevention](#). Data from the [2003-2004 National Health and Nutrition Examination Survey](#) found that 37.7% of sexually experienced female adolescents (14-19 years old) in the sample had at least one of the five most common STDs. Prevalence was high even among those who were within one year of their sexual debut and among those who reported only one lifetime partner. These findings highlight the need to provide STD-related medical services to this population.

For the past 50 years, [California Family Code Section 6926](#) has allowed minors 12 years and older to consent to the diagnosis and treatment of STDs without the consent of a parent or guardian. Due to advances in STD prevention, California law has since been updated. As of January 1, 2012, [California Assembly Bill AB 499](#) expands the legal authority of minors 12 years and older to also consent to confidential medical services for the prevention of STDs without the consent of a parent or guardian. Prevention services currently include vaccination against human papillomavirus (HPV) and Hepatitis B, and pre- and post-exposure prophylaxis (PrEP and PEP) to prevent HIV infection.

The [National Center for Youth Law](#) has developed a series of tools to help clinicians and other youth-serving providers understand the laws in California which relate to minor consent and confidentiality. These include:

- [Understanding Confidentiality and Minor Consent in California: An Adolescent Provider Toolkit](#)
- [Factsheet: When Sexual Intercourse with a Minor Must Be Reported as Child Abuse: California Law](#)

For more information on minor consent and confidentiality laws, please visit [www.TeenHealthLaw.org](http://www.TeenHealthLaw.org) or [California Family Health Council](http://California Family Health Council).

County of San Diego STD Clinics: [www.STDSanDiego.org](http://www.STDSanDiego.org)

Phone: (619) 692-8550 Fax: (619) 692-8543

STD Clinical Consultation Pager: (877) 217-1816 (8am-5pm, M-F)

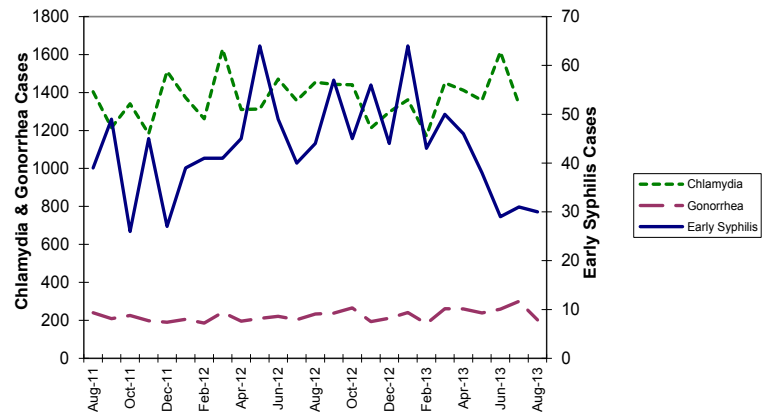


LIVE WELL SAN DIEGO

Provider STD Reporting: (619) 692-8520; fax (619) 692-8541

Sign up to receive Monthly STD Reports, email [STD@sdcounty.ca.gov](mailto:STD@sdcounty.ca.gov)

Figure 1. Chlamydia, gonorrhea and early syphilis\* cases reported among San Diego County residents, by month.



\*Early syphilis includes primary, secondary and early latent syphilis.

## Key Points comparing YTD cases reported through August 2012 to August 2013.

- Chlamydia information is omitted due to data entry delay.
- Gonorrhea has increased 14.8%.
  - Male rectal gonorrhea has increased 15.3%.
- Early syphilis has decreased 8.8%.

Note: All data are provisional. Case counts are based on the earliest of date of diagnosis, date of specimen collection, and treatment date. Totals for past months might change because of delays in reporting from labs and providers. In June 2013, the County of San Diego began to transition to a new data surveillance system. For the time being case counts may be slightly inflated, as some cases may have been entered into both systems.

