

Live Well, San Diego! Evaluation Framework



September 2012

Our framework for achieving wellness:

Live Well, San Diego!

**Building
Better
Health**

**Living
Safely**

Thriving

Development of *Live Well, San Diego!*

Evaluation Framework

- Convened HHS subject matter experts
- Reviewed local, state & national data sources & reports
- Developed a single evaluation framework for HHS *Building Better Health*, which soon migrated to represent the entire *Live Well, San Diego!* initiative (healthy, safe, thriving)
- Solicited input from Executive team
- Convened meetings to solicit input from local & national research & data experts
- Contracted with Center for Community Research to:
 - Identify optimal community indicators that resonate with the public &
 - Identify & align HHS program results & performance data that have the most influence on selected community indicators

Live Well, San Diego!

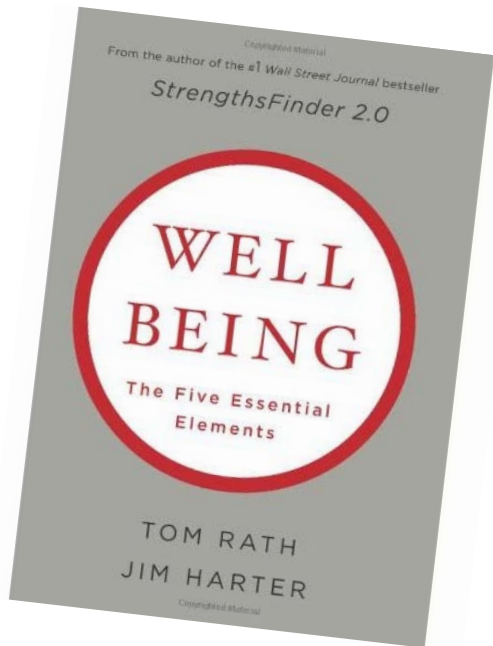
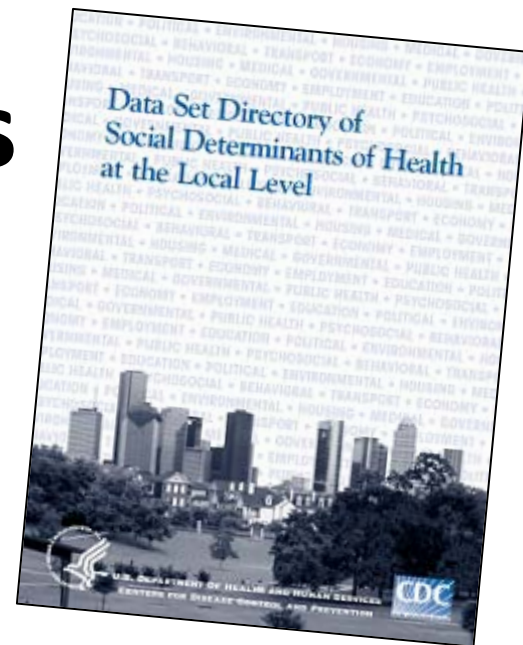
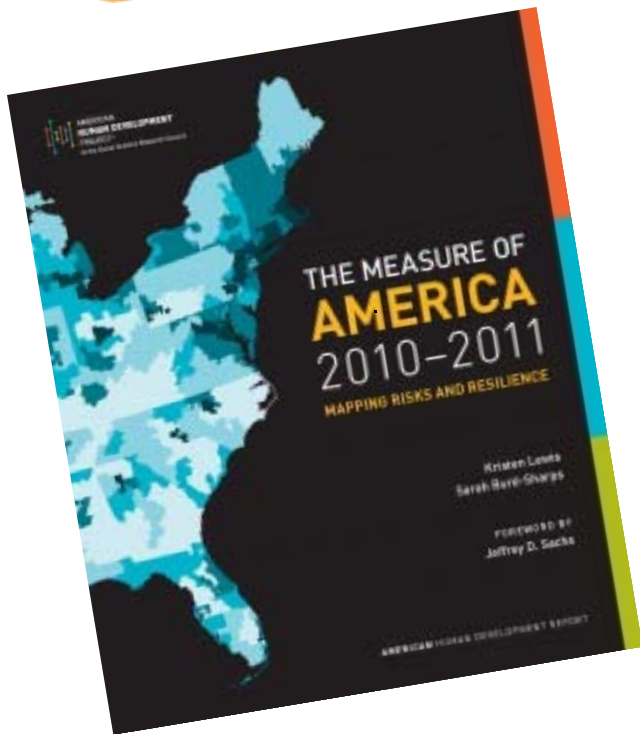
Evaluation Framework

Guiding Principles

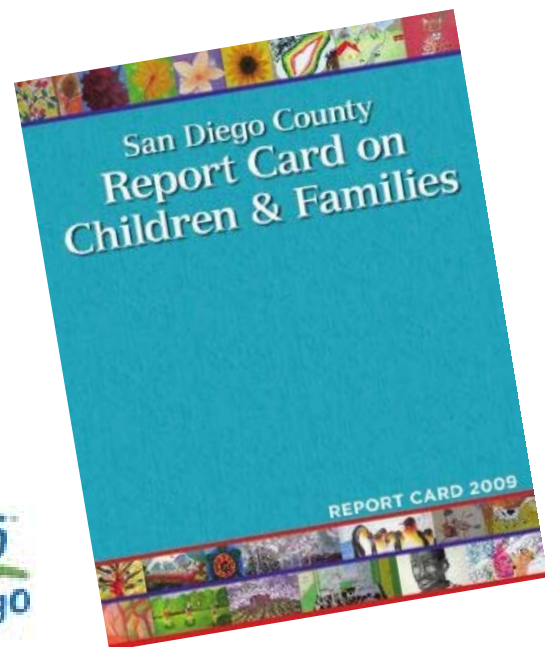
- Limited number of indicators for simplicity
- Indicators where data is routinely collected
- Indicators across the life span of the individual
- Indicators comparable to other localities
- Indicators that can be collected at sub-regional level



Best Practices



County Health Rankings
Mobilizing Action Toward Community Health
countyhealthrankings.org



Live Well, San Diego! Evaluation Framework

10 Leading
Indicators

5 Areas of
Influence

1 Vision for
Healthy, Safe
& Thriving
Communities

Live Well, San Diego!

Live Well, San Diego! Evaluation Framework

Areas of Influence

Definition

10 Leading Indicators



Health

Good health and enough energy to get things done on a daily basis

Life Expectancy
Quality of Life



Knowledge

Learning throughout your life

Education Index



Standard of Living

Effectively managing your economic life

Income Index*
Unemployment Rate



Community

Physical environment and sense of security in the area where you live

Security Index*
Physical Environment Index*
Built Environment Index*



Social

A sense of connection with the area and people where you live

Vulnerable Population Index*
Engagement Index*

Note: Indicators without asterisks are measures/indices that already exist. Measures with asterisks (*) are being created by combining existing measures/indices.

Live Well, San Diego! Evaluation Framework: 10 Leading Indicators

Areas of Influence 10 Leading Indicators

Explanation



Health

Life Expectancy
Quality of Life

Measure of longevity and summarizes mortality at all ages
Quality adjusted life years



Knowledge

Education Index

Developed for American Human Development Index:
•Percent with less than high school diploma
•Percent with at least high school diploma
•Percent with at least bachelor's degree
•Percent with graduate or professional degree
•School enrollment



Standard of Living

Unemployment Rate
Income Index*

Total labor force that is unemployed but actively seeking *employment* and willing to work
Created incorporating:
•Median income
•Disposable income
•% of households spending more than 1/3 income on housing



Community

Security Index*
Physical Environment Index*
Built Environment Index*

Created incorporating: perception of safety, violent crime rate, victimization
Created incorporating: air quality, water quality, beach closures
Created incorporating: population density, public space opportunities, quality of housing, transportation access

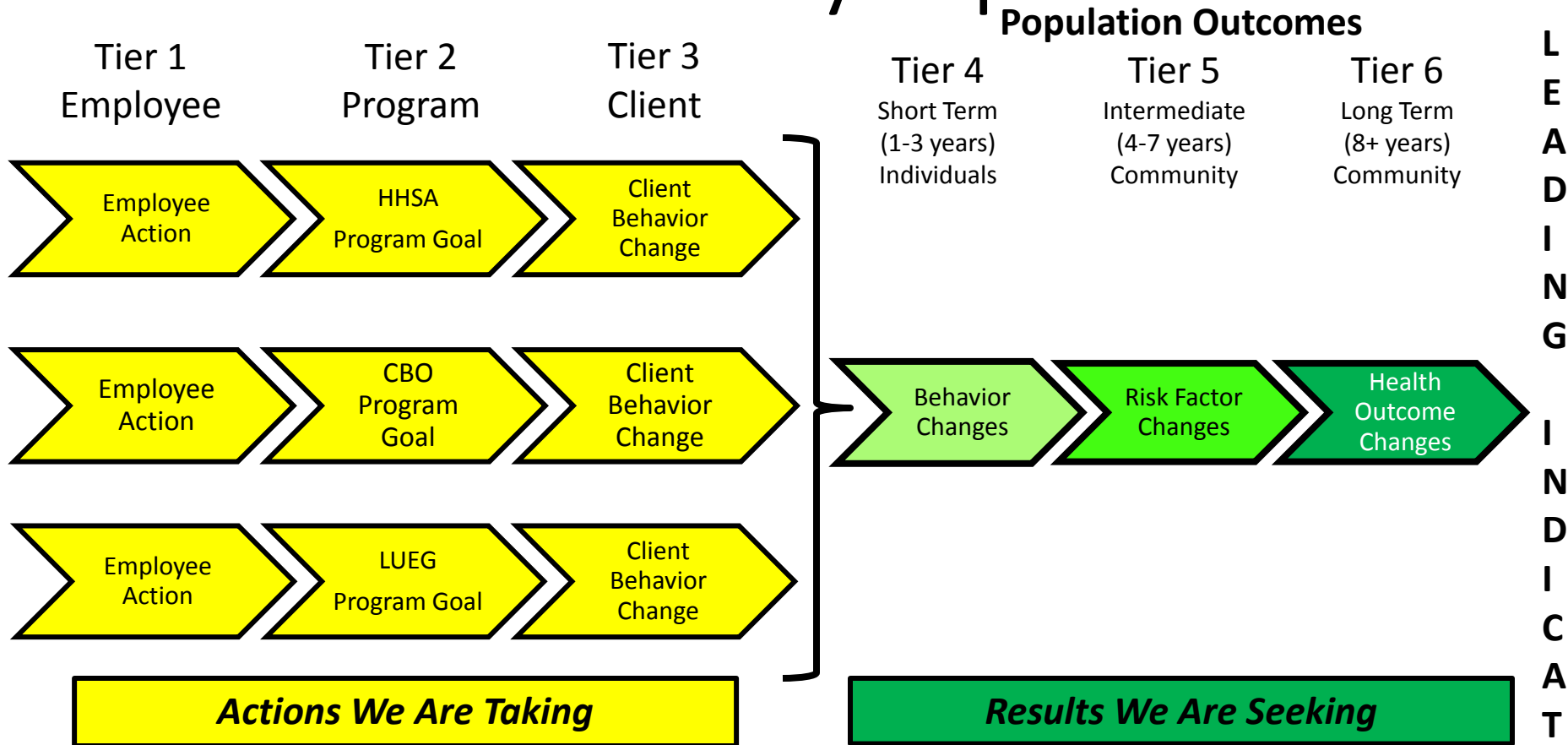


Social

Vulnerable Population Index*
Engagement Index*

Created incorporating: persons with self-care difficulty, linguistic isolation, without health insurance coverage, population with food insecurity
Created incorporating: volunteerism, charitable giving, membership of community organizations, percent of persons registered to vote and voting

Collective Action to Community Impact



Programs (County, CBOs, faith-based, others) and their employees collectively contribute to client behavior change. Changes in client behaviors across programs lead to changes in population behavior and then overall health and well being.

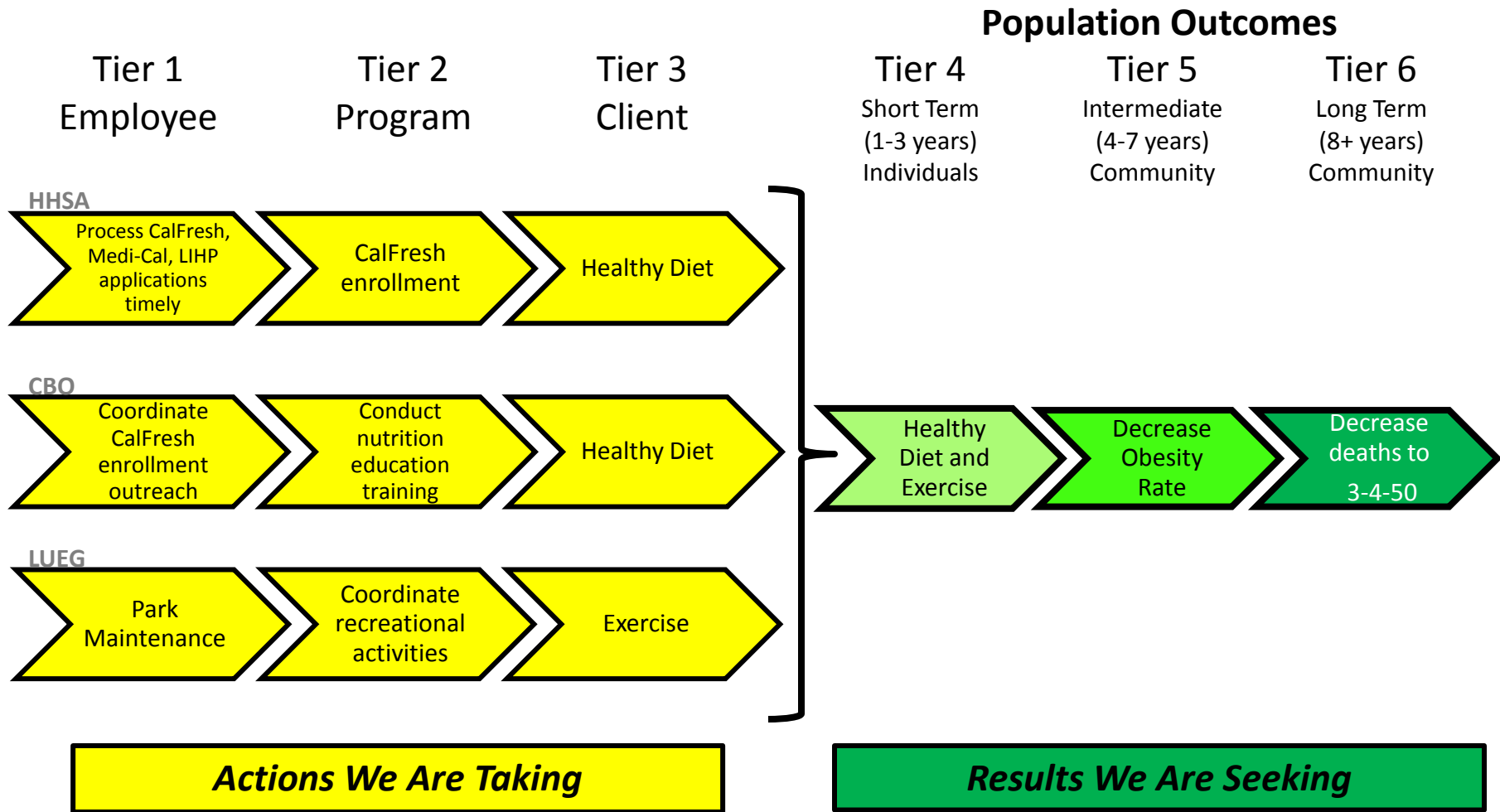


Collective Action to Community Impact Health Area of Influence Example

Q
U
A
L
I
T
Y

L
I
F
E

E
X
P
E
C
T
A
N
C
Y



Stakeholders Surveyed

- **Survey of 1300+ Community Stakeholders showed strong support for all measures**
- **43 measures vetted**
 - **30 recommended to KEEP AS IS**
 - **8 with minor modification**
 - **3 for further discussion in Community Influence**
 - **Alcohol and Drug traffic collisions, arrests, DUIs**
 - **1 recommended to a lower tier**
 - **1 recommended to drop**

Next Steps

Proposed

- 09/10/2012 – 09/20/2012 Present evaluation framework to advisory boards
- 10/30/12 Present *Live Well, San Diego!* evaluation framework to the Board
- 11/2012 Begin implementation of the ***Live Well, San Diego!*** Evaluation Framework