



San Diego HIV Planning Group
Priority Setting and Resource Allocation Committee



2024 Key Data Findings
HIV EPIDEMIOLOGY

Approved June 6, 2024

OVERALL

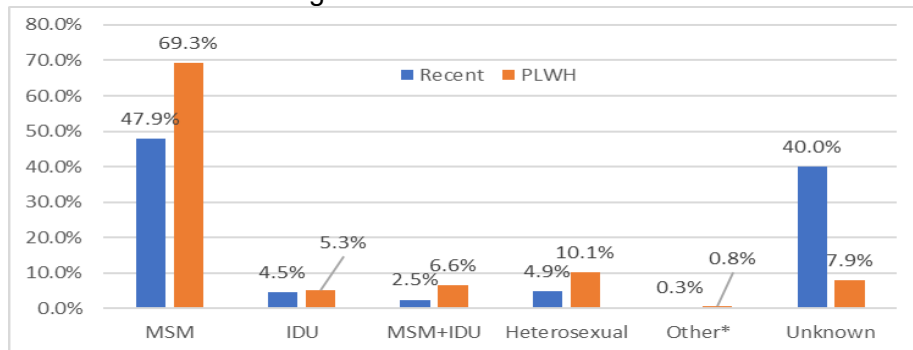
- Total Persons Living with HIV disease (PLWH) in San Diego County (Prevalent cases) = **15,035**.
- Recent cases (2019 – 2023) = **2,142** (this is a subset of the total or prevalent cases)

BIRTH SEX

- The proportion of female HIV disease diagnoses has increased slightly over the last 5 years to about **13.8% (n = 296, recent cases;** (cf. 10.8% of prevalent cases, n = 1,624 for females)
- East, North Inland, and Central Regions have the largest proportion of recent HIV disease diagnoses among women (= 56% of total women in the three regions)

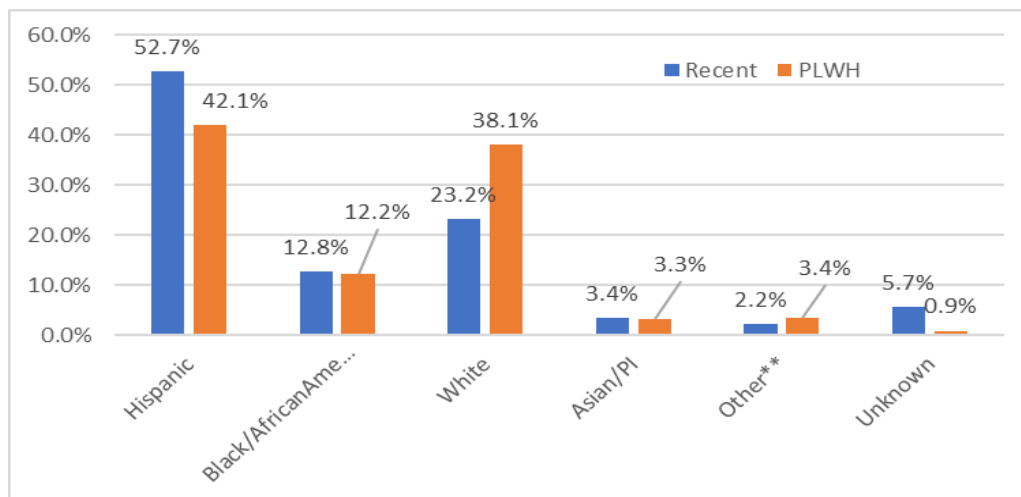
MODE OF TRANSMISSION

- The majority of people living with HIV disease (PLWH) through year-end 2023 were men who have sex with men (**MSM, 69.3%**, n = 10,426) Most recent diagnoses and PLWH were male and MSM. For women, heterosexual transmission was the largest mode of transmission.



RACE/ETHNICITY

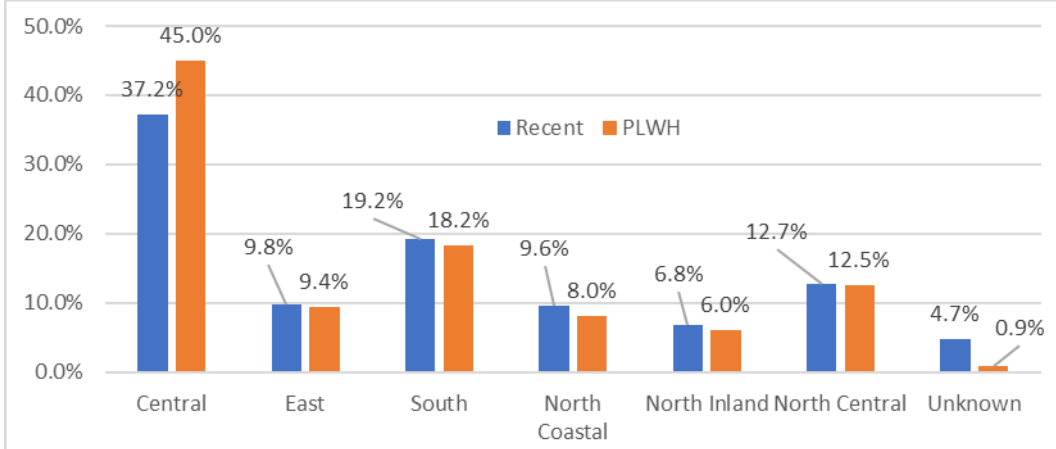
- The majority of recent HIV disease diagnoses for over ten years were people of color. The proportion of Non-Hispanic White cases decreased over time, while the proportion of Hispanic/Latino cases increased over time. The HIV rate (number/100,000 or 10⁵) was higher for Non-Hispanic Black/African American (**38.2/10⁵**) than for Hispanic/Latino (**20.5/10⁵**) or Non-Hispanic White (**7.2/10⁵**) between 2019 and 2023.



¹ Recent Cases = HIV disease diagnosis, regardless of stage of disease, between 2019 – 2023 while residing in San Diego County **Persons Living with HIV disease (PLWH)** = Residing in San Diego County and alive as of December 31, 2023

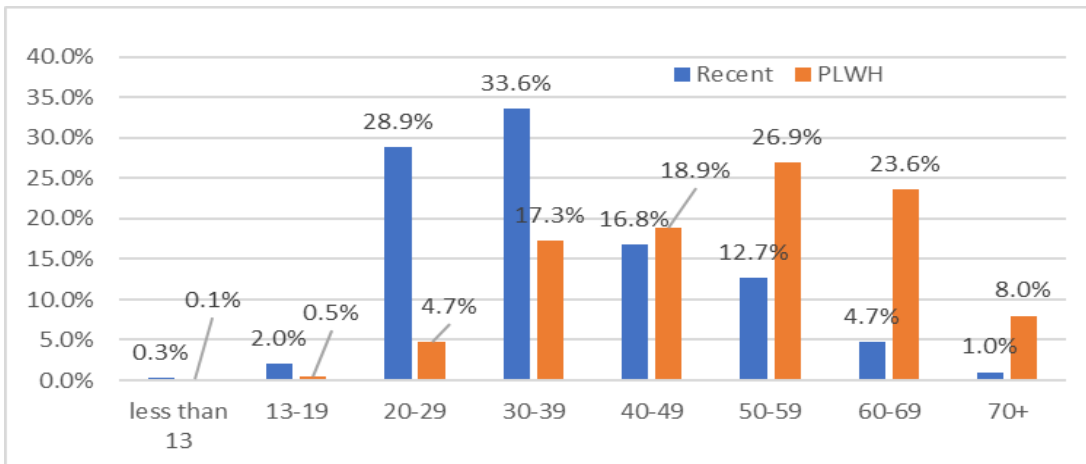
REGION AT DIAGNOSIS

- Central Region has the highest number (n = 6,760) and percentage (45.0%) of total PLWH cases, followed by the South Region (n = 2,729, 18.2%).
- The proportion of HIV disease in the Central Region residents decreased over time, while the proportion of HIV disease diagnoses among South Region and North Regions residents increased slightly over time.



AGE

- The 30 – 39 years and 20 – 29 years age groups were the most frequent age groups at diagnosis among recent HIV cases (diagnosed 2019 – 2023, 33.6% n = 719, and 28.9%, n = 619, respectively), whereas the 50 - 59 was the most frequent age group for total PLWH (26.9%, n = 4,038, and 60 – 69 was the second most frequent age group (23.6%, n = 3,555).



DURATION OF INFECTION

- The greatest proportions for duration of HIV disease are between 5 – 9 years (15.5%), 10 – 14 years (15.3%), and 15 – 19 years (15.4%). This data demonstrates that people with HIV disease are living for several years.

¹ Recent Cases = HIV disease diagnosis, regardless of stage of disease, between 2019 – 2023 while residing in San Diego County

² Persons Living with HIV disease (PLWH) = Residing in San Diego County and alive as of December 31, 2023. Age is calculated at 12/31/2023.