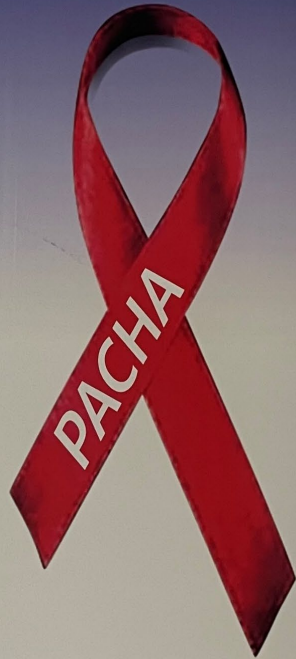


Welcome to the  
**74th Presidential Advisory Council  
on HIV/AIDS (PACHA)  
Full Council Meeting**



**Building 18 – Conference Room 1511**

# “PACHA-to-the- People”

---

September 19-20, 2022

Los Angeles, CA

# Key highlights

Updates on PEPFAR, IAS and Visiting organizations (i.e., Transgender Wellness Center, The Wall Las Memorias)

Discussion of the revised National HIV/AIDS Strategy and the Implementation Plan with over 300 indicators to drive activities and reach NHAS plan goals by 2030.

Commitment for **cross-collaboration** between federal organizations (i.e., HRSA, Ryan White, CDC, SAMHSA, NIH, CMS, etc.,)

Addressing the unique needs of Los Angeles

- Epidemiology of HIV in Los Angeles
- Community Engagement



# Addressing the Unique needs in Los Angeles “Community lens”

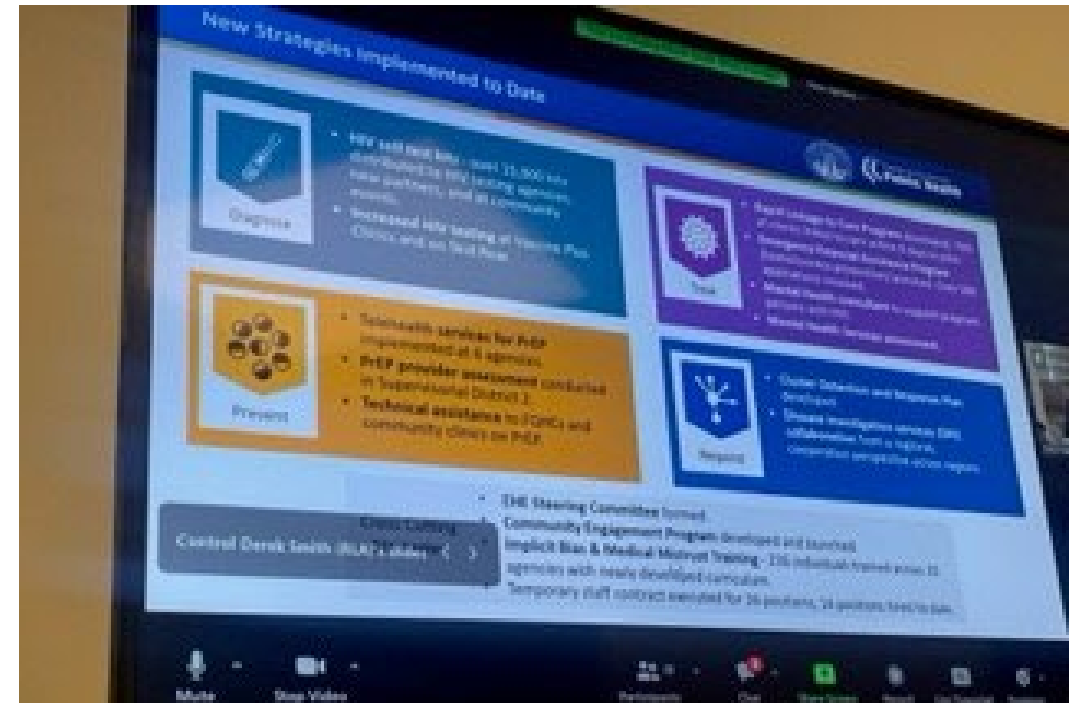
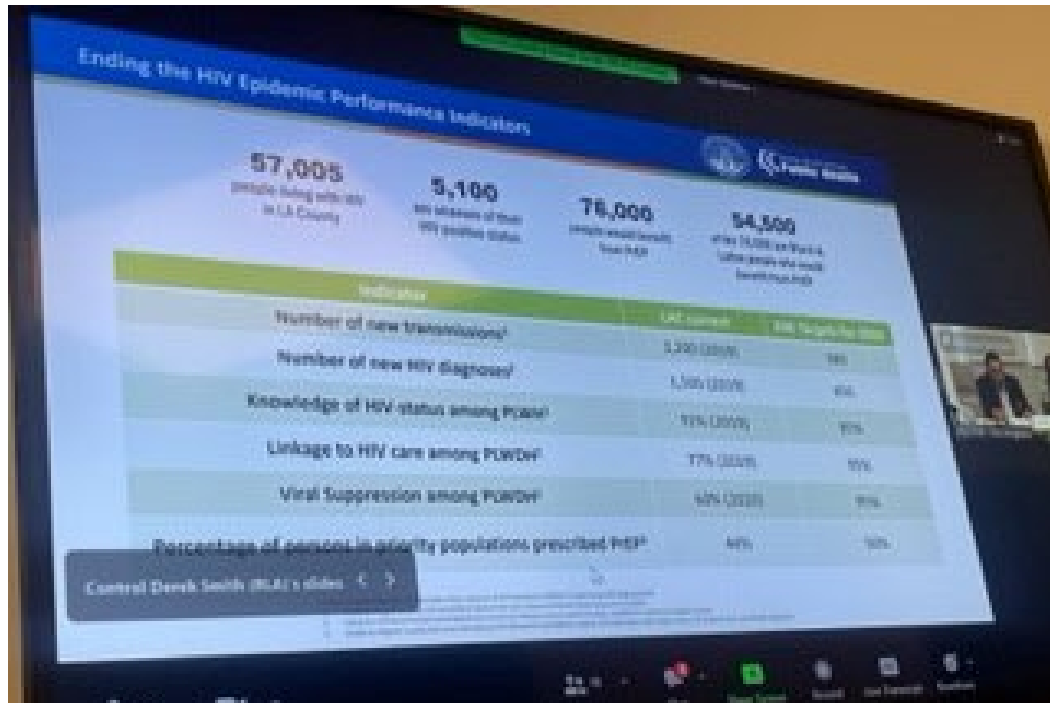
- Medical mistrust, stigma, substance use, mental health, importance of incorporating Status neutral continuum of care, supporting the incarcerated (PLWH) prior to being released and upon release are all urgent issues
- Frustration with how government is focusing on youth and losing site of addressing HIV in Older Adults & Long-Term Survivors
- Limited resources for people in rural communities with access to care, social services including having competent and empathetic providers
- Access to technology, including technology training for PLWH/folks that would benefit from PrEP to improve Linkage/Retention in Care

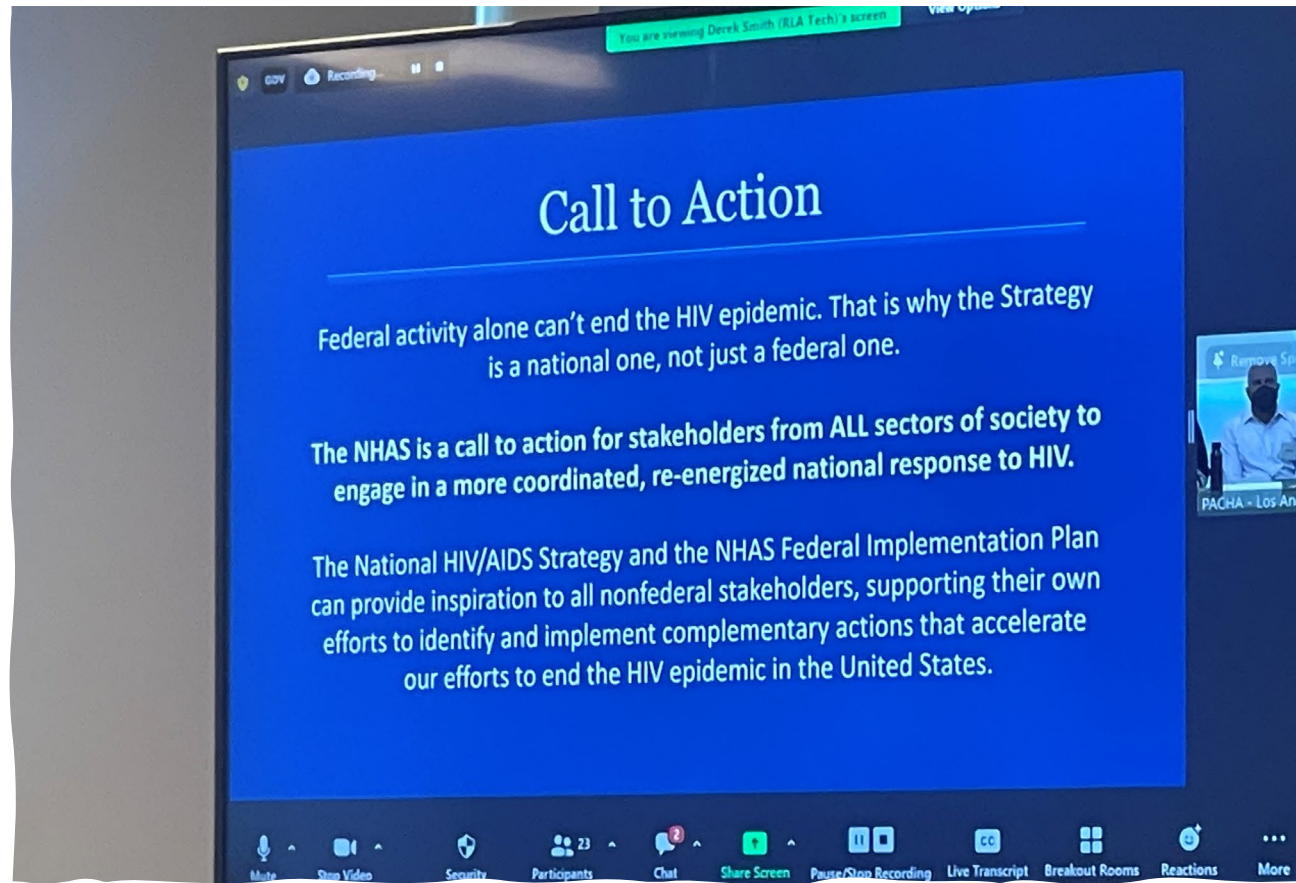
# Addressing the Unique needs in Los Angeles “Provider lens”

- Insufficient funding to support the increase in living costs & employee wellness.
- Issues with workforce development & workflow development to incorporate Status Neutral continuum of care.
  - Issues also within school systems, bureaucracies within institutions that create barriers to hiring folks with no degrees.
- Health disparities in priority populations are on the rise and the lack of flexibility from funders with resources create barriers to care
- Housing, stigma, substance use & mental health are affecting the Angelenos
- An entire shift of healthcare, teaching institutions needs to take place to support the youth and the aging population across the HIV Status Neutral Continuum of Care.



# LA EHE Performance Indicators





PACHA is going to the people for listening sessions

---

