



CAL-SDAIM COMMUNITY FORUM

September 29, 2021





**Cal-SDAIM Community Forum
September 29, 2021
10:00 – 11:30 AM**

**Microsoft Teams Meeting
+1 619-343-2539 Phone Conference ID: 552 760 245#
[Click here to join the meeting](#)**

AGENDA

- **Welcome/Introductions:**
Supervisor Nathan Fletcher, Chair, San Diego County Board of Supervisors
Supervisor Nora Vargas, Vice-Chair, San Diego County Board of Supervisors
- **Panel Presentation and Overview of Cal-SDAIM:**

Enhanced Care Management and In Lieu of Services
- **Letter of Support Process for the State Department of Health Care Services (DHCS) RFP**
- **Community Feedback**
- **Next Steps**

WELCOME/INTRODUCTIONS



LIVE WELL
SAN DIEGO

- Supervisor Nathan Fletcher, Chair,
San Diego County Board of Supervisors
- Supervisor Nora Vargas, Vice-Chair,
San Diego County Board of Supervisors



MEDI-CAL & Cal-AIM OVERVIEW

Jennifer Tuteur, MD, FAAFP, Deputy Chief Medical Officer
Julianne Howell, PhD, HHSA Senior Health Policy Advisor



INTRODUCTION



PURSuing EQUITABLE HEALTH CARE

- Medi-Cal is California's Medicaid program.
- Public health insurance program for low-income individuals.
- State contracts directly with Managed Care Plans.

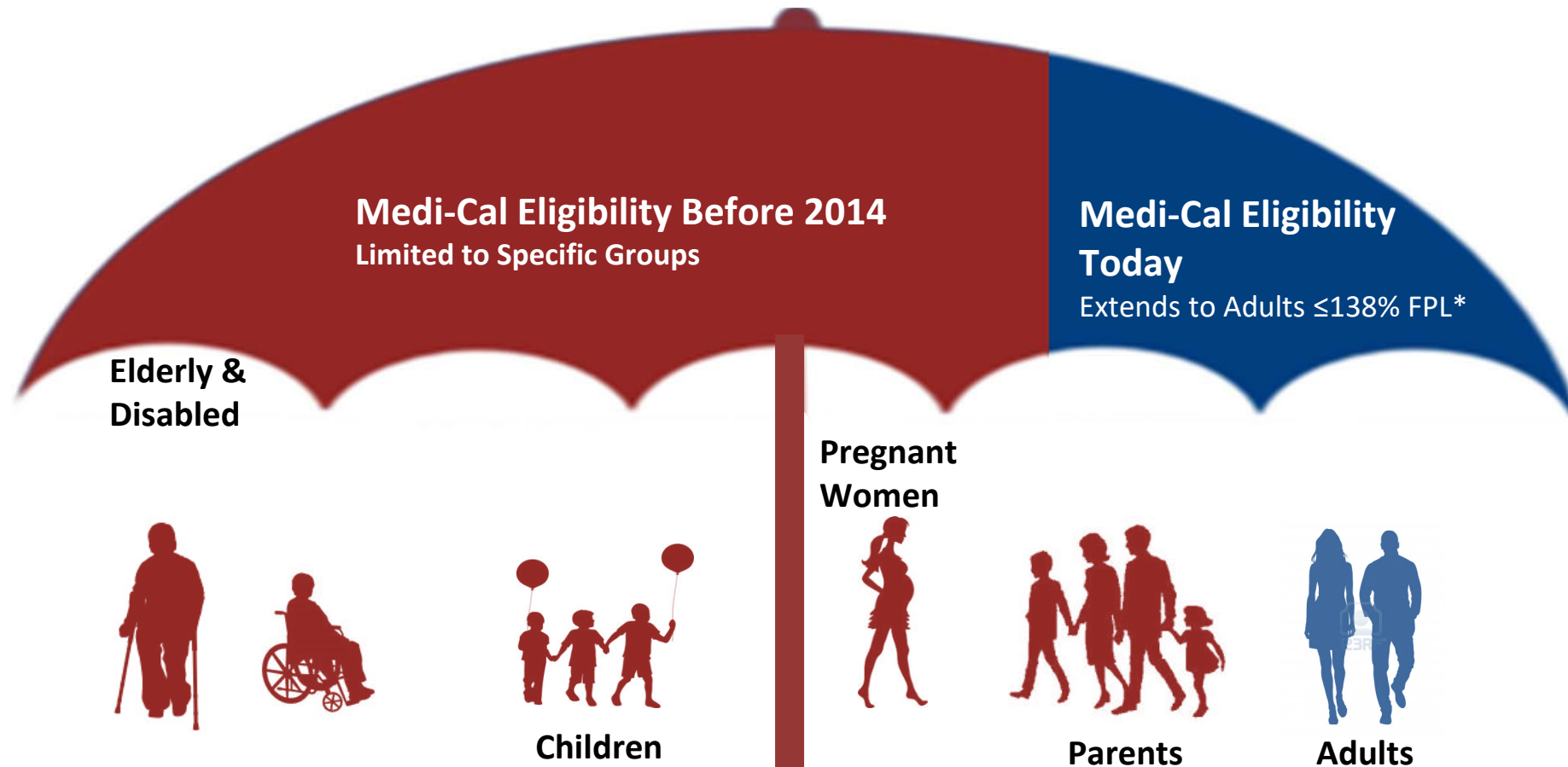


WHO DOES MEDI-CAL COVER?



LIVE WELL
SAN DIEGO

MEDI-CAL ELIGIBILITY EXPANDED TO FILL COVERAGE GAPS FOR ADULTS



*138% FPL = \$17,609 for an individual and \$29,974 for a family of three in 2021

MEDI-CAL STATISTICS



LIVE WELL
SAN DIEGO

California

- As of January 2018:
 - 13.5 M recipients, including 3.9 M childless adults
 - Almost 1/3 of whole population, 1/2 of children
- For July 2020 - June 2021: 14M recipients
- With COVID-19 coverage, projected to increase to peak of 16.1M in January 2022
- Total cost FY 2018/19: \$100+B, with ~2/3s coming from the federal government
- Projected cost FY 2020/21 \$122.2B

San Diego

- As of August 2021 - 990,000 recipients

HOW IS MEDI-CAL DELIVERED?



LIVE WELL
SAN DIEGO

MEDI-CAL MANAGED CARE

- The California State Department of Health Care Services contracts with Managed Care Plans (MCPs) and there are seven plans serving San Diego.
- MCPs establish a defined network of providers and pay them directly (payment models vary).
- There are services “carved out” of Medi-Cal Managed Care Plans

SERVICES PROVIDED



LIVE WELL
SAN DIEGO

Services Provided through Medi-Cal Managed Care

- Preventive/Wellness Services
- Medical/Surgical
- Pediatric
- Maternity Care
- Emergency Services
- Hospital Services
- Behavioral Health (for mild/moderate illness)
- Prescription Drugs

Services “Carved Out” of Medi-Cal Managed Care

- Specialty Mental Health Services
- Substance Use Disorder (SUD) Treatment
- Dental Services
- Long Term Services and Supports (LTSS)
- California Children’s Services (CCS)



CAL-AIM OVERVIEW

(California Advancing & Innovating Medi-Cal)



CaAIM OVERVIEW



LIVE WELL
SAN DIEGO

CaAIM is a framework developed by the California Department of Health Care Services (DHCS) that encompasses broad-based delivery system, program and payment reform across the Medi-Cal program.

- Leverages Medi-Cal as a tool to address complex challenges, such as homelessness, behavioral health care access, growing justice involved populations, and growing aging population
- Provides for whole-person care approach
- Takes a population health, person-centered approach
- Builds on the experience from the Whole Person Care Pilots and Health Home Program



CaAIM GOALS



LIVE WELL
SAN DIEGO

- Identify and manage member risk and need through whole-person care approaches and by addressing Social Determinants of Health;
- Move Medi-Cal to a more consistent and seamless system by reducing complexity and increasing flexibility;
- Improve quality outcomes, reduce health disparities, and drive delivery system transformation and innovation through value-based initiatives, modernization of systems and payment reform.

CalAIM IMPLEMENTATION IN SAN DIEGO



LIVE WELL
SAN DIEGO

San Diego is a Geographic Managed Care County

- Currently Seven Managed Care Plans
- State DHCS will be doing a Re-Procurement for MCPs in San Diego, Sacramento, and Counties under Two-Plan Managed Care Model
 - June 2021: Draft RFP was issued for comment
 - Late 2021/Early 2022: Final RFP, with applications due 60 days later
 - Jan. 2024: New contracts begin
 - **7 Medi-Cal MCPs continue for 2022 and 2023**

CaAIM KEY COMPONENTS



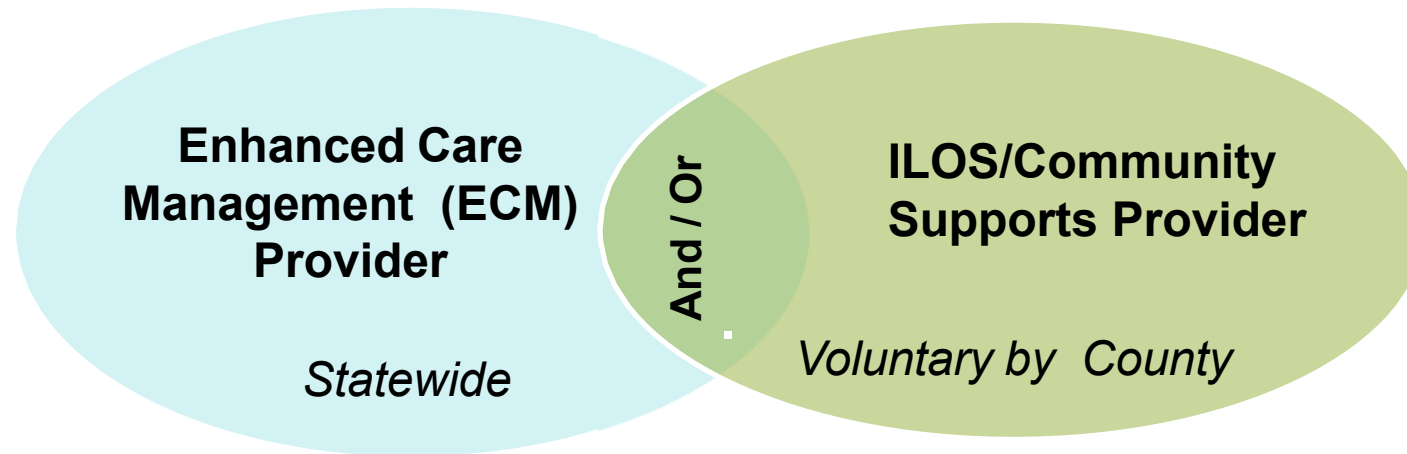
LIVE WELL
SAN DIEGO

- Population Health Management
- Enhanced Care Management (ECM)
- In-Lieu-of Services (ILOS) / Community Supports
- MCP Shared Risk, Shared Savings, & Incentives
- Behavioral Health, including DMC-ODS
- Justice-Involved Populations
- Full Integration Plans
- Managed Long-Term Services and Supports (MLTSS)
- Dental Services
- Long-Term Plan for Foster Care

ENHANCED CARE MGMT & ILOS/COMMUNITY SUPPORTS



LIVE WELL
SAN DIEGO



ECM Goal: provide a whole-person approach to care. Addresses the clinical and non-clinical needs.

ILOS/Community Supports Goal: Medically appropriate and cost-effective alternatives to State Plan services.



Core Service Components:

1. Comprehensive Assessment & Care Management Plan
2. Enhanced Coordination of Care
3. Health Promotion
4. Comprehensive Transitional Care
5. Member & Family Supports
6. Coordination of Referral to Community and Social Support Services

IN LIEU OF SERVICES (ILOS) / COMMUNITY SUPPORTS



LIVE WELL
SAN DIEGO

1. Housing Transition Navigation Services
2. Housing Deposits
3. Housing Tenancy & Sustaining Services
4. Short Term Post Hospitalization Housing
5. Recuperative Care
6. Respite Services
7. Day Habilitation Programs
8. Nursing Facility (NF) Transition
9. Community Transition Services
10. Personal Care & Homemaker Services
11. Environmental Accessibility Adaptations (Home Modifications)
12. Meals / Medically Tailored Meals
13. Sobering Centers
14. Asthma Remediation

ECM/CS IMPLEMENTATION TIMELINE



LIVE WELL
SAN DIEGO



ECM

January 2022

- Transition all Members enrolled in a WPC Pilot or HHP who are identified by the WPC Lead Entity or HHP CB-CME as belonging to a Population of Focus¹:
- ECM goes live for the following ECM Populations of Focus:
 - *Individuals & Families Experiencing Homelessness;*
 - *High Utilizer Adults;*
 - *Adults with SMI/SUD;*
 - *Adults & Children/Youth Transitioning from Incarceration².*

ILOS

January 2022

- Statewide launch of ILOS
- Eligible members currently served by HHP/WPC transition to ILOS.

1. Includes children and youth currently served by HHP or WPC

2. In WPC Pilot counties only, where the services provided in the Pilot are consistent with those described in the ECM Contract.

ECM/CS IMPLEMENTATION TIMELINE



LIVE WELL
SAN DIEGO



ECM

January 2023

- ECM goes live for the following ECM Populations of Focus³:
 - *Individuals Transitioning from Incarceration (adults and children/youth);*
 - *Members Eligible for LTC and at risk of Institutionalization;*
 - *Nursing Home Residents transitioning to community*

July 2023

- ECM goes live for all other Children and Youth⁴.

ILOS

January 2023

Every 6 months, MCPs may add additional pre-approved **ILOS**.

July 2023

Every 6 months, MCPs may add additional pre-approved **ILOS**.

3 - 4. MCPs may begin offering ECM to these Populations of Focus earlier than the indicated start dates; however, rates will not be adjusted to reflect these Populations of Focus until the indicated start dates.



LETTER OF SUPPORT PROCESS FOR THE STATE DEPARTMENT OF HEALTH CARE SERVICES (DHCS) RFP





- Framework for the Future for San Diego County
- Meaningful Coordination and Collaboration and Transparency
- Person-Centered Care Coordination
- Data Sharing/Information Technology (IT) Infrastructure
- <https://www.sandiegocounty.gov/content/sdc/hhsa/programs/sp/CalAIM.html>



COMMUNITY FEEDBACK

CAL-SDAIM LETTER OF SUPPORT PROCESS



NEXT STEPS



LIVE WELL
SAN DIEGO

- Additional feedback can be sent to SDAIM.HHSA@sdcounty.ca.gov
- Check the Cal-SDAIM website for responses to questions asked in today's session
<https://www.sandiegocounty.gov/content/sdc/hhsa/programs/ssp/CalAIM.html>
- Healthy San Diego Cal-AIM kickoff - October 22 at 1pm