



ITEM #5 OVERVIEW OF SAN DIEGO ADVANCING AND INNOVATING MEDI-CAL (SDAIM)

*Heather Summers, Deputy Director, Medical Care Services
Health and Human Services Agency*





INTRO TO CALIFORNIA INNOVATING AND ADVANCING MEDI-CAL (CALAIM)



UNDERSTANDING CALAIM



Long-term commitment to transform and strengthen Medi-Cal, offering Californians a more equitable, coordinated, and person-centered approach

Ensure Medi-Cal's most vulnerable members receive the care they deserve

CALAIM GOALS



Identify and manage member risk and need through whole-person care approaches and by addressing Social Drivers of Health



Move Medi-Cal to a more consistent and seamless system by reducing complexity and increasing flexibility



Improve quality outcomes, reduce health disparities, and drive delivery system transformation and innovation through value-based initiatives, modernization of systems and payment reform

CARE MANAGEMENT CONTINUUM



In 2023, Managed Care Plans (MCPs) are required to have a broad range of programs and services to meet the needs of all members in the following three areas:

Enhanced Care Management (ECM) is for the **highest-need** members and provides intensive coordination of health and health-related services

Complex Care Management (CCM) is for members at **higher-and medium risk** and provides ongoing chronic care coordination, interventions for temporary needs, and disease-specific management interventions

Basic Population Health Management (BPHM) is the array of programs and services for **all** MCP members, including care coordination and comprehensive wellness and prevention programs, all of which require a strong connection to primary care

POPULATIONS OF FOCUS

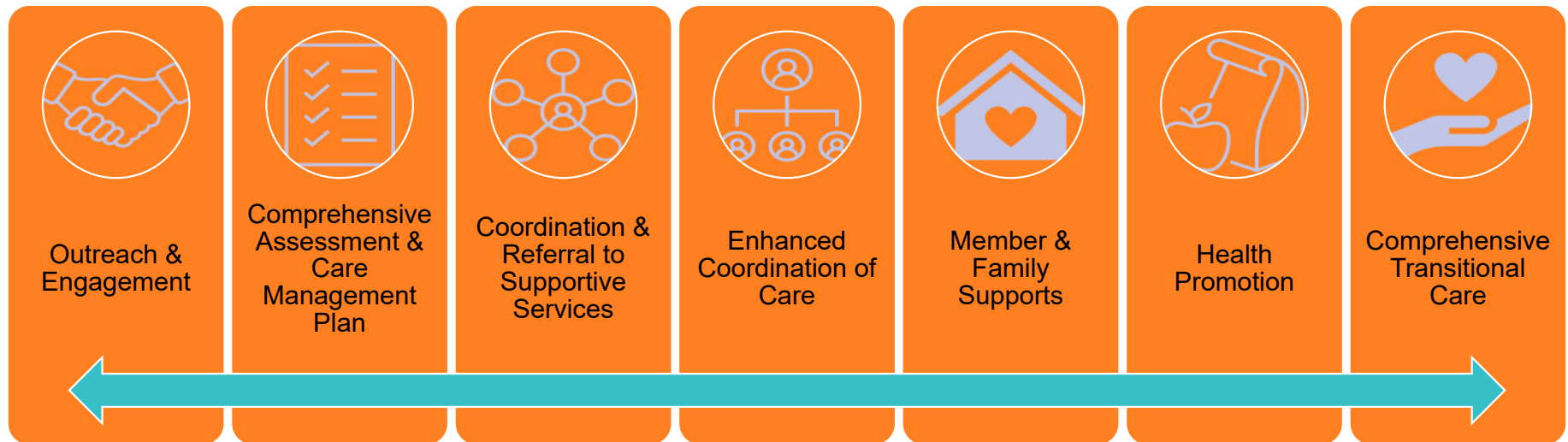


Go-Live Date	Populations of Focus
January 2022	<ol style="list-style-type: none">1. Individuals and Families Experiencing Homelessness2. Individuals At Risk for Avoidable Hospital or ED Utilization3. Adults with Serious Mental Illness and/ or Substance Use Disorder Needs4. Individuals with an Intellectual or Developmental Disability (who qualify for eligibility in another ECM Population of Focus)
January 2023	<ol style="list-style-type: none">5. Individuals At Risk for Institutionalization and Eligible for Long-Term Care6. Nursing Facility Residents Transitioning to the Community
July 2023	<ol style="list-style-type: none">7. Adults & Youth Incarcerated and Transitioning to the Community (anticipated to go live 7/2023, waiting for waiver approval)8. Children and Youth Populations of Focus
January 2024	<ol style="list-style-type: none">9. Pregnant and Postpartum Individuals At Risk for Adverse Perinatal Outcomes

ENHANCED CARE MANAGEMENT



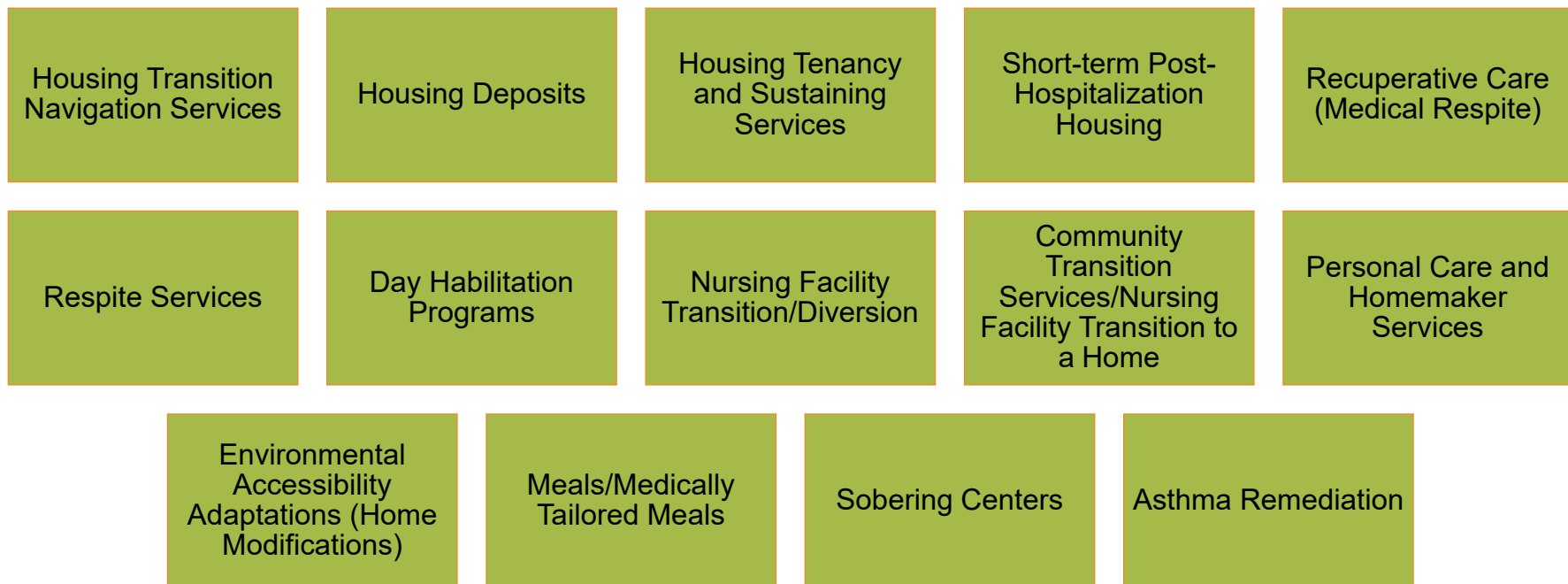
Enhanced Care Management is a new Medi-Cal benefit to support comprehensive care management for enrollees with complex needs that must often engage several delivery systems to access care.



COMMUNITY SUPPORTS



Community Supports are services that MCPs are strongly encouraged, but not required to provide as substitutes for utilization of other services or settings such as hospital or skilled nursing facility admissions, discharge delays, or emergency department use.



For more details, see [Community Supports](#) Policy Guide (August 2022)



SAN DIEGO ADVANCING AND INNOVATING MEDI-CAL (SDAIM)



SDAIM, SAN DIEGO COUNTY'S CALAIM APPROACH



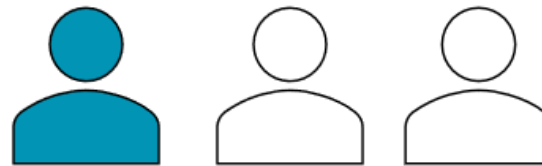
San Diego Advancing and Innovating Medi-Cal (SDAIM)

- SDAIM refers to the County of San Diego's local approach to CalAIM
- Aligns with the Board of Supervisor's Framework for the Future for San Diego County
- SDAIM partners and collaborates with community providers, direct service providers, County departments, Medi-Cal Managed Care Plans, and local government to assist in coordinating the goals of CalAIM at a local level to ensure:
 - Meaningful Coordination, Collaboration, and Transparency
 - Person-Centered Care Coordination
 - Data Sharing/Information Technology (IT) Infrastructure

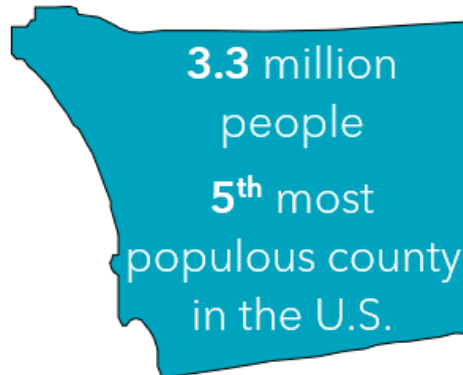
WHY IS MEDI-CAL IMPORTANT IN SAN DIEGO COUNTY



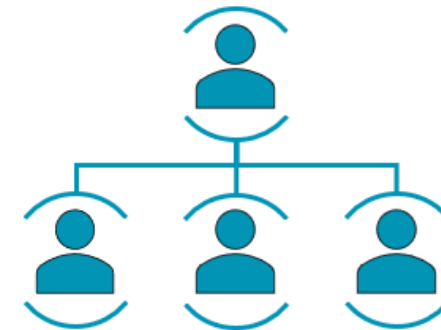
Medi-Cal provides health insurance coverage for nearly **1,000,000** in San Diego County in 2022



Almost **1 out of 3** people in San Diego County are Medi-Cal beneficiaries



5% of enrollees with the highest-cost needs account for over half of Medi-Cal spending



San Diego County has the **2nd** largest Medi-Cal population in California



191% increase in recipients in San Diego County since 2010

LOCAL IMPLEMENTATION



- Healthy San Diego is the Medi-Cal Managed Care system in San Diego County

- Unique partnership which includes:
 - Consumers
 - Advocates
 - Providers
 - Hospitals
 - Managed Care Plans
 - County of San Diego
 - State Department of Health Care Services/Medi-Cal Managed Care Division

LOCAL MEDI-CAL MANAGED CARE PLANS



- Aetna Better Health
- Blue Shield Promise Health Plan
- Community Health Group
- Health Net
- Kaiser Permanente
- Molina Healthcare
- UnitedHealthcare

FUTURE WORK



Community Engagement

- SDAIM team will conduct input and feedback sessions to co-create the SDAIM Roadmap and SDAIM Priority Areas
 - Fall/Winter 2022
- Anticipated return to the Board in early 2023 with SDAIM Update and Roadmap





DISCUSSION & Q&A



QUESTIONS



LIVE WELL
SAN DIEGO



CONTACT INFORMATION



Heather Summers, Deputy Director

San Diego Advancing and Innovating Medi-Cal (SDAIM),
Medical Care Services County of San Diego Health and
Human Services Agency

Email: Heather.Summers@sdcounty.ca.gov