



# COUNTY OF SAN DIEGO REFUGEE EMPLOYMENT SERVICES

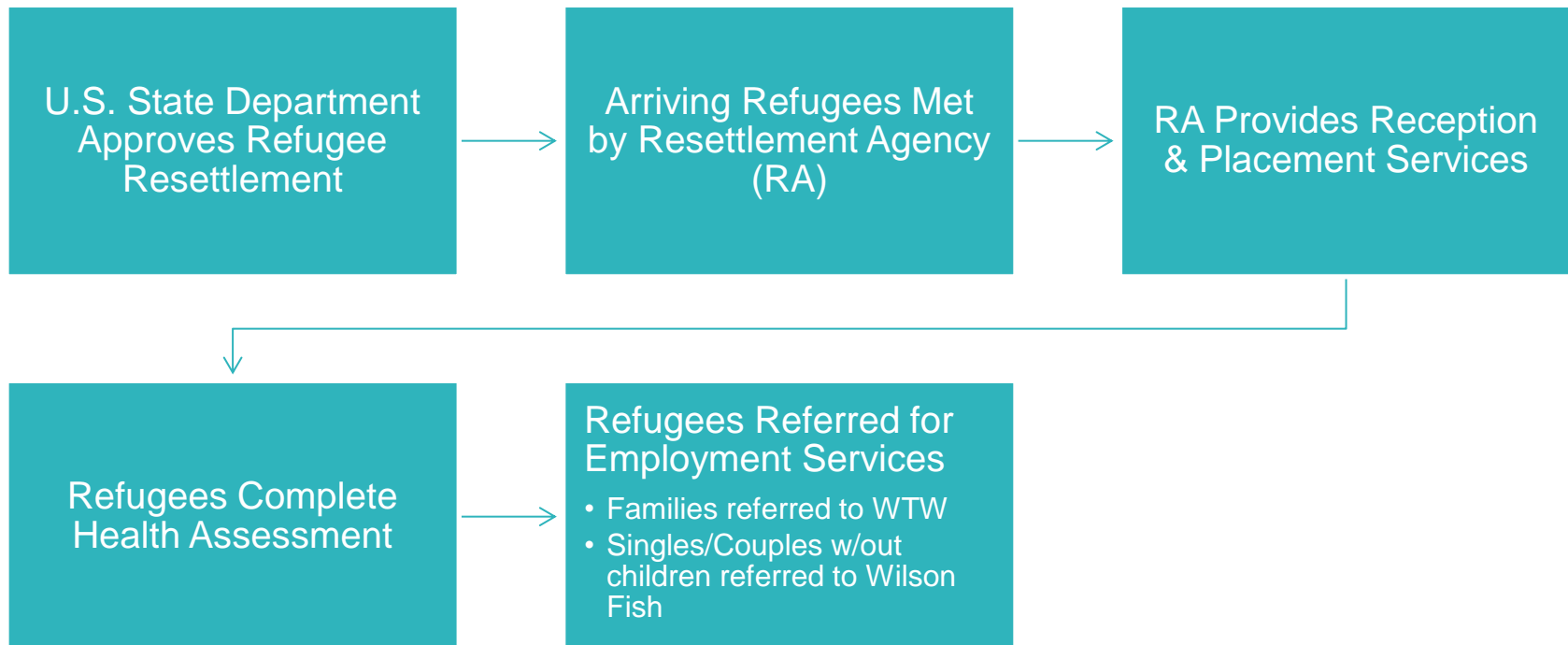
---

*Presentation to Social Services Advisory Board*

*July 9, 2015*



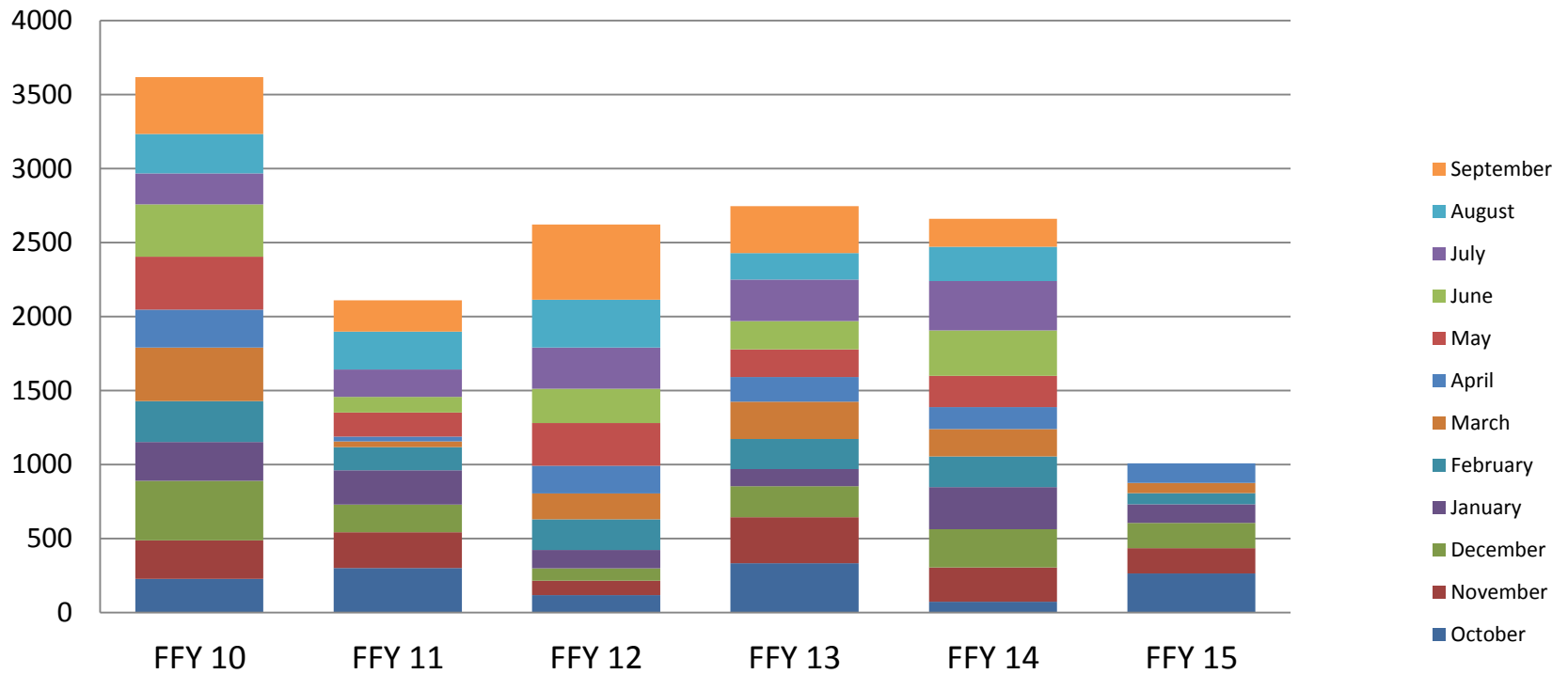
# REFUGEE ARRIVAL PROCESS



# SAN DIEGO REFUGEE ARRIVAL TRENDS



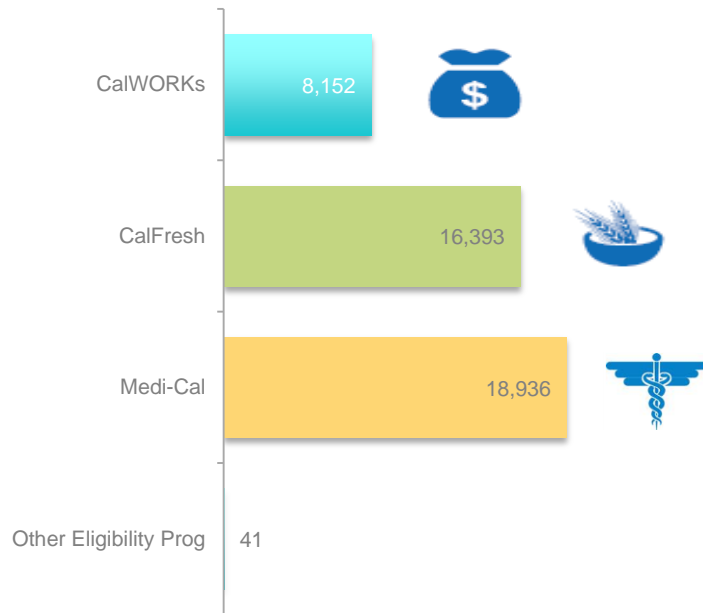
### County of San Diego Refugee Arrivals



# COUNTY SERVICES TO REFUGEES

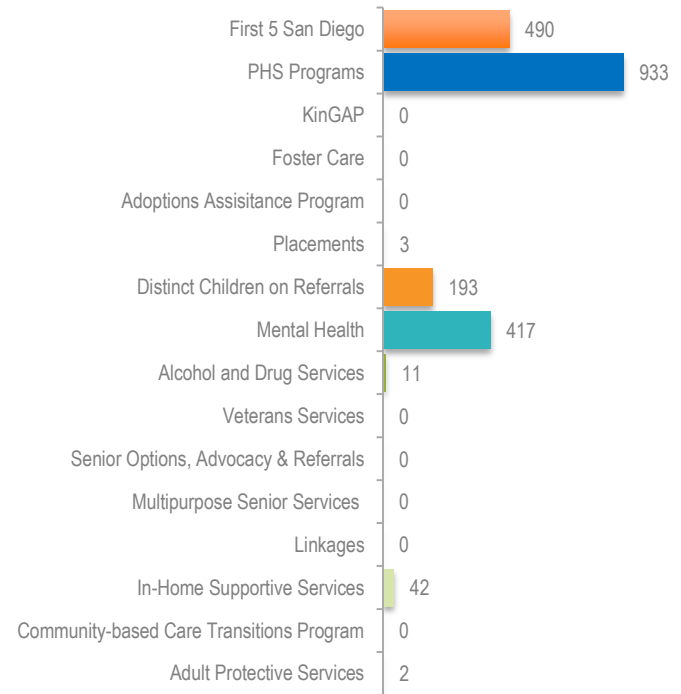


## REFUGEES RECEIVING PUBLIC ASSISTANCE



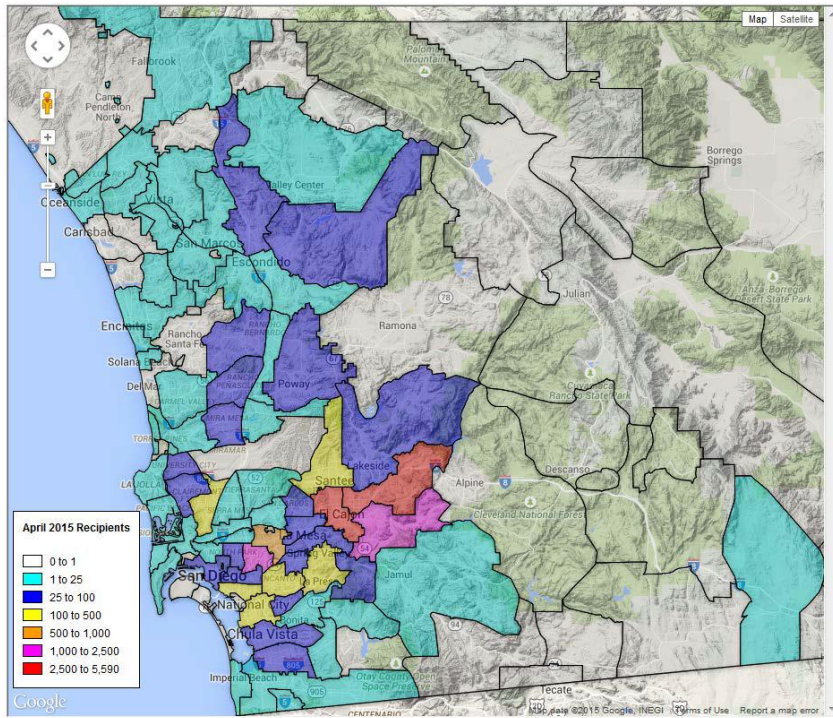
Note: Individuals may be counted in more than one program

## REFUGEES RECEIVING OTHER HHS PROGRAMS





## LOCATION OF REFUGEES RECEIVING PUBLIC ASSISTANCE



Region	% of Refugees Receiving Public Assistance
Central	17% (2,489)
East	80% (11,962)
North	2% (344)
South	1.1% (168)



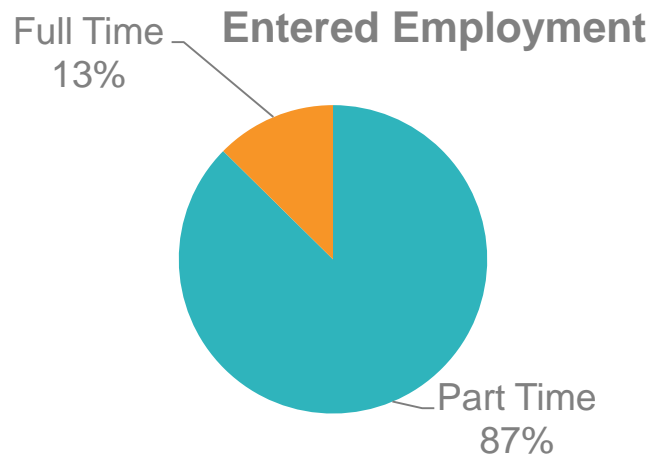
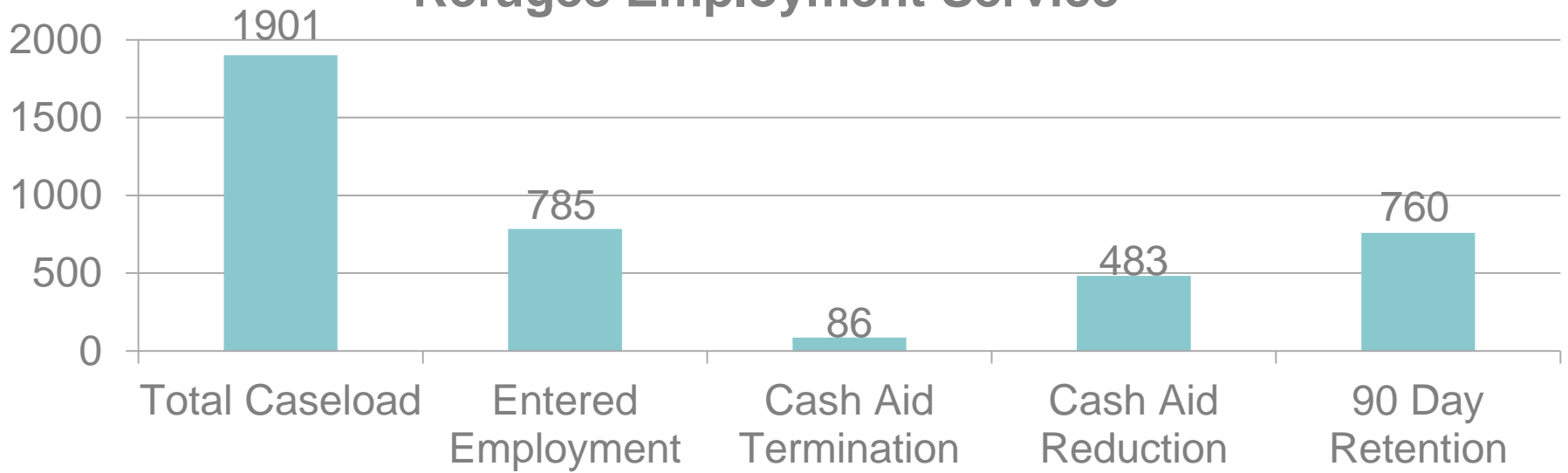
## EMPLOYMENT SERVICES TO REFUGEE FAMILIES

- Refugee Employment Services (RES) are offered to CalWORKs recipients through the Welfare to Work Providers (PCG & Res Care) for up to 60 months after arrival to US
- RES eligible clients are defined by the Office of Refugee Resettlement as those refugees who are ready for employment
- Available RES activities through WTW include:
  - Employment (family self-sufficiency plan, job club, job search, assessment, OJT, etc.)
  - English Language Training (either Vocational ESL or ESL in conjunction with an employment activity)
  - Case Management
  - Other (Information & referral, outreach, translation/interpretation, social adjustment, work experience)

# ORR REFUGEE OUTCOMES



## Refugee Employment Service





## VOCATIONAL ENGLISH-AS-A-SECOND LANGUAGE

- English Language training provided in conjunction with employability services
- Successful pilot led to recent RFP (awaiting Notice of Intent to Award) – contract will have following objectives:
  - VESL Classes/Workshops
  - Employment Placement
  - Employment Retention
  - Employment Upgrade
  - On-the-Job-Training
  - Capacity building for Ethnic Based Service Organizations serving refugees



# OTHER PROGRAMS FOR REFUGEES



## ADDITIONAL PROGRAMS TARGETED TO REFUGEES

### Project SHINE

- Health Literacy for Iraqi Refugees

### Get Fresh

- Nutrition Education and Community/Vocational Gardening for Refugees

### EMASS

- Elder Multi-Cultural Access & Support Services

### The Exchange

- Communication and conflict management course to increase employability for refugee WTW participants  
(<https://youtu.be/50nOk34p79c>)