

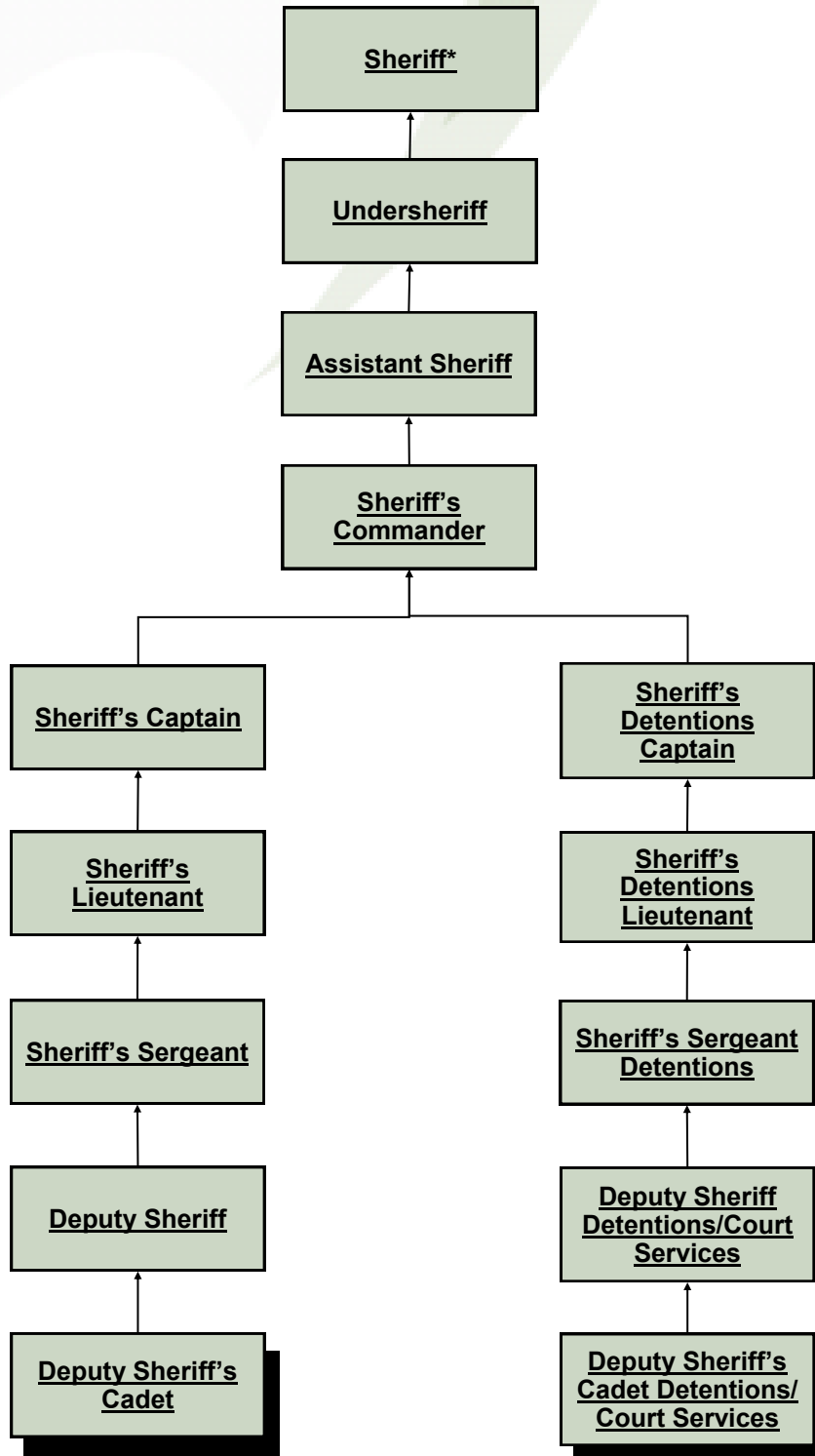
# COUNTY OF SAN DIEGO

## Department of Human Resources

### Deputy Sheriff Career Paths

The career paths that Deputy Sheriffs most commonly enter into are diagrammed below. You may review the class specifications through the Department of Human Resources' website at [www.sdcounty.ca.gov/hr](http://www.sdcounty.ca.gov/hr).

We encourage you to examine the options available to you and prepare yourself for the opportunities for which you qualify.



\*Elected Official