



County of San Diego

Regional Water Equity Deep Dives



- PACE Program
- *July 26, 2023*

Today's Agenda

Introduction

- 5 Minutes

Special Topic Presentation

- 10 Minutes

Breakout Rooms

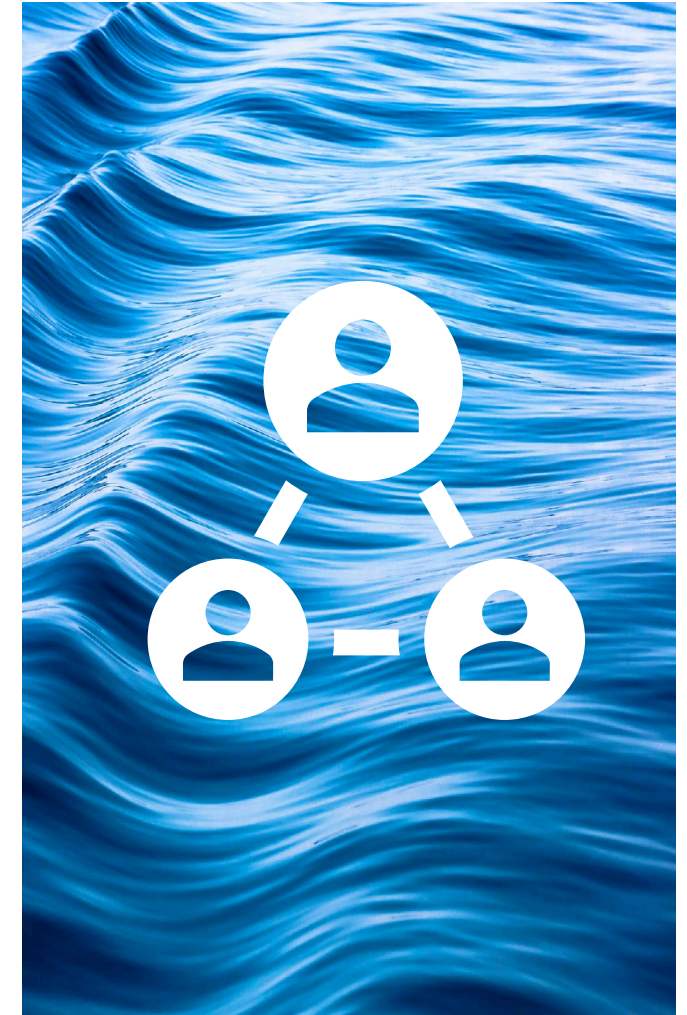
- 40 Minutes

Closing Thoughts

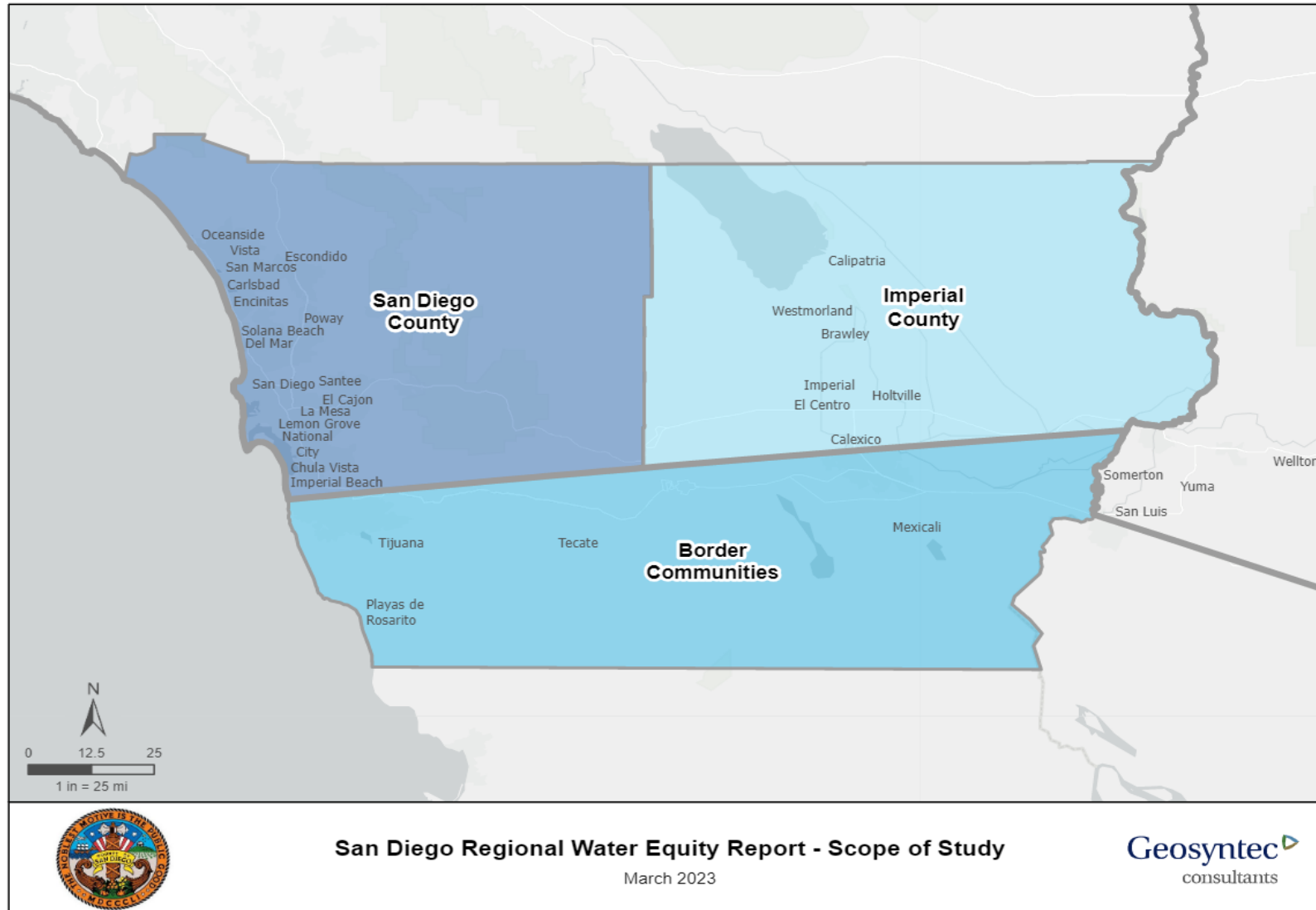
- 3 Minutes

Regional Water Equity

- Regional Collaboration
 - Tribal Communities, Binational Partners, Imperial County
- Adapt to a Hotter, Drier, Future
- Equitably Address Drought Impacts
 - Wildfires, Water Scarcity, Access to Water



Regional Water Equity





County of San Diego



Purchase of Agricultural Conservation Easement (PACE) Program

Background



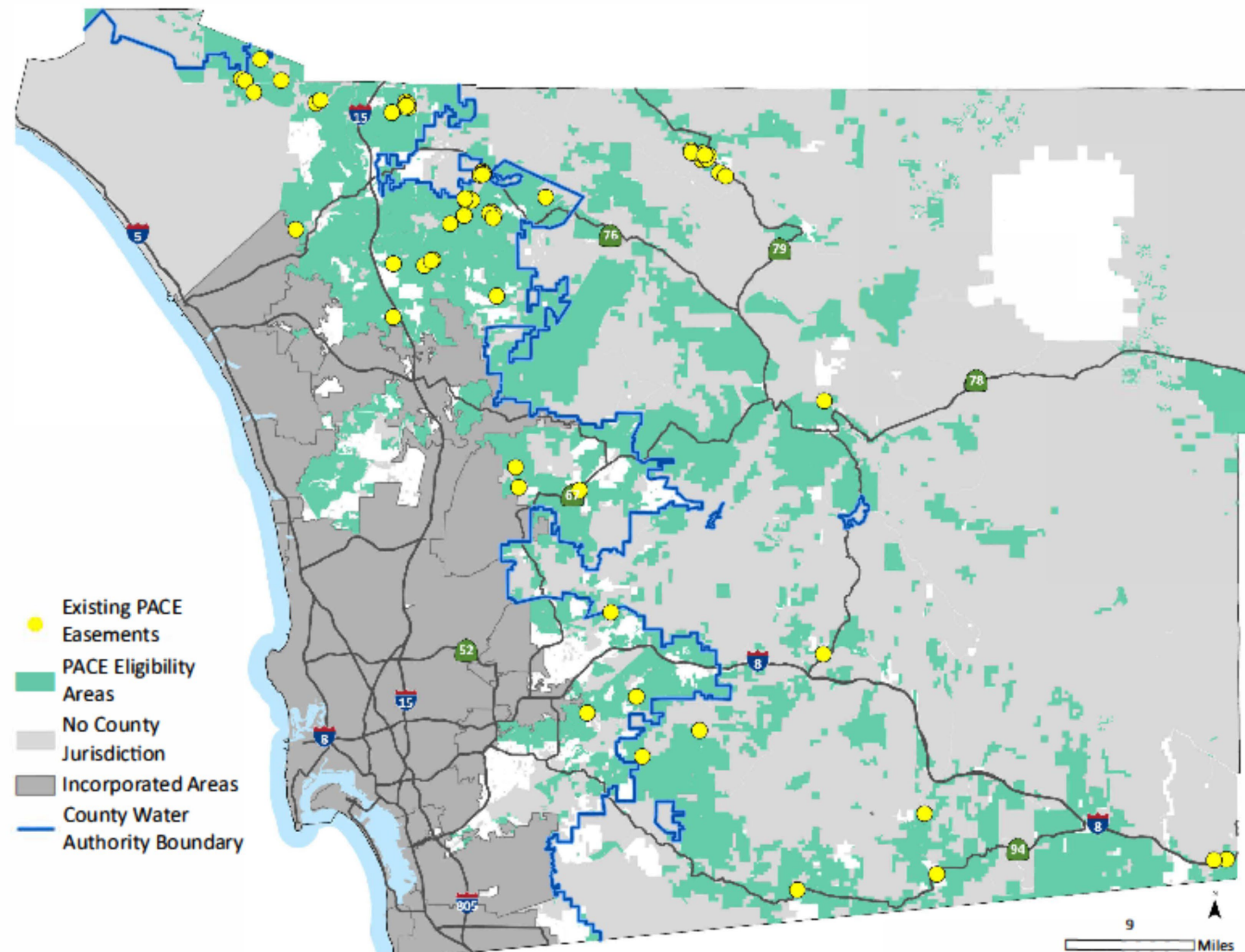
Easements Acquired

Program Cycle	Number of Easements	Total Acreage of Easements	Cost of Easements
FY 2013/14	6	782	\$1,762,750
FY 2014/15	8	414	\$1,319,850
FY 2015/16	4	190	\$514,450
FY 2016/17	5	165	\$831,450
FY 2017/18	1	212	\$608,470
FY 2018/19	4	273	\$267,500
FY 2019/20	5	365	\$1,151,055
FY 2020/21	2	70	\$194,500
FY 2021/22	10	789	\$2,691,750
FY2022/23	3	66	\$321,500
TOTAL	48	3,326	\$9,663,275

Eligibility Requirements

- Property must be zoned:
 - A70 – Limited Agricultural
 - A72 – General Agricultural
 - RR – Rural Residential
 - S90 – Holding Area (Limitations)
 - S92 – General Rural
- Properties must have been actively farmed or ranched for a minimum of two years immediately prior to applying

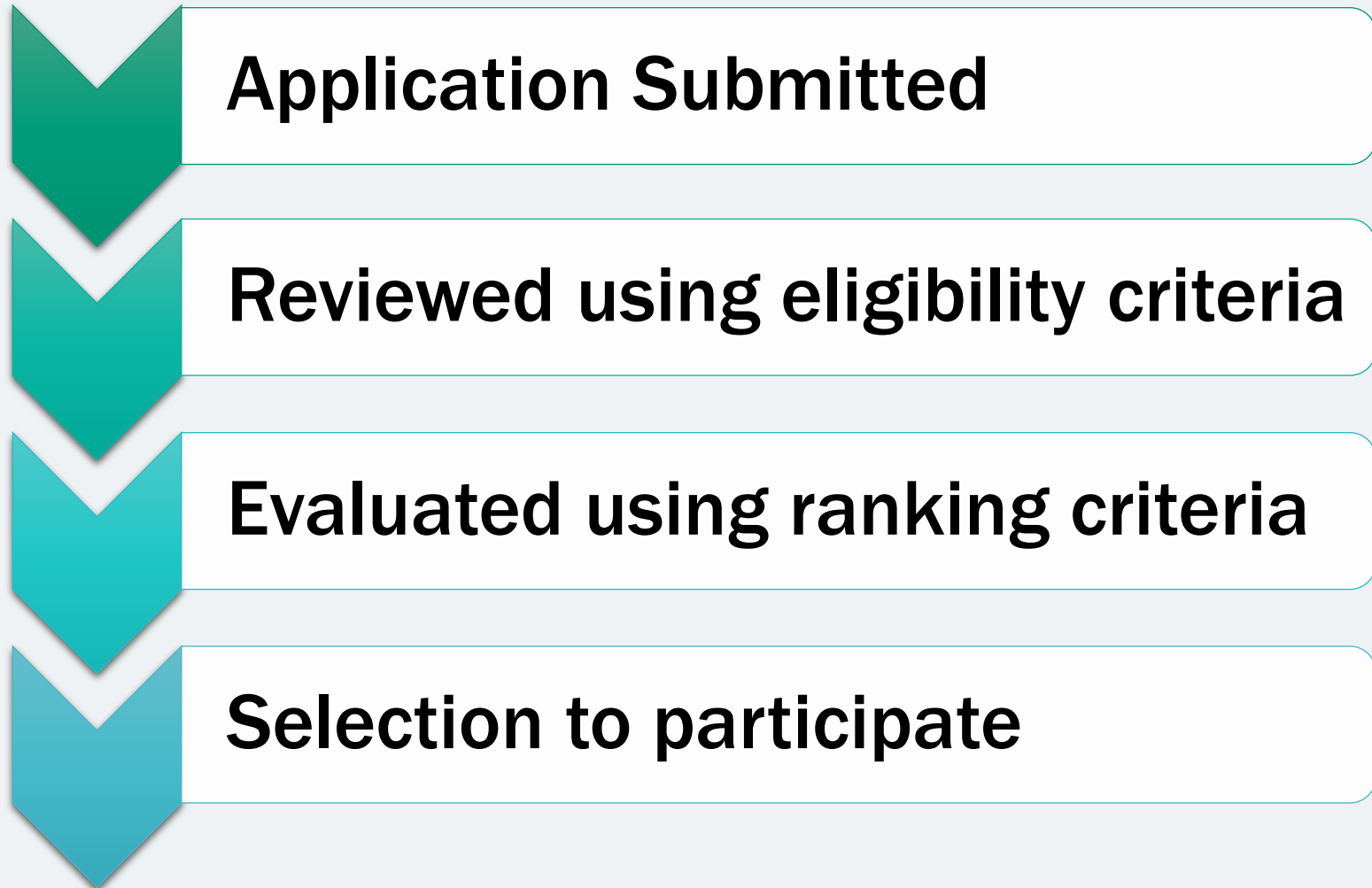




Properties which are located in agriculturally focused zones are eligible to participate in the updated PACE Program.

628,000+ Eligible Acres

PACE Selection Process



PACE Ranking Factors



**Agricultural
Importance**



Wildlife Buffer



**GHG Emissions
Reduction**



**Compatibility with
Land Use Patterns**

Easement Acquisition Process



Property Evaluation



**Easement Offer &
Contract Preparation**



**Contract Execution &
Open Escrow**



Close Escrow

Example:

**\$500,000 Estimated fair market value
- \$375,000 Estimated restricted value
= \$125,000 Easement value paid to the
landowner as compensation**

Planning & Development Services

ENHANCED BY Google

MENU

DIVISIONS

Purchase of Agricultural Conservation Easement (PACE) Program

The County of San Diego has an agricultural conservation program known as the Purchase of Agricultural Conservation Easement (PACE) Program. The PACE Program promotes the long term preservation of agriculture in the County of San Diego.

Under the PACE Program, willing agricultural property owners are compensated for placing a perpetual easement on their property that limits future uses to agriculture. As a result, the agricultural land is preserved and the property owner receives compensation making the land's continued use for agriculture more viable.

Program Contact: Michael Blackmun | AgConservation@sdcounty.ca.gov

The PACE Program is now accepting applications! Applications will be ranked and selected for participation annually, the next application review cycle will occur in Spring 2024. To be notified of future application review cycles and other announcements on the PACE Program, please subscribe to our mailing list by clicking the banner below.

SUBSCRIBE TO UPDATES ON **County Conservation!**

The County's Board of Supervisors adopted an expansion to the properties eligible to participate in the PACE Program on March 3, 2021 (10).

March 3, 2021 Board of Supervisors Hearing Report Documents

This expansion no longer requires that applicants must have experienced a density reduction under the 2011 General Plan Update. Properties must meet the following eligibility criteria to apply for the expanded program:

1. Active agriculture for at least two years immediately prior to application
2. Property must be zoned A70 – Limited Agriculture, A72 – General Agriculture, RR – Rural Residential, S90 – Holding Area, or S92 – General Rural

To determine Zoning and program eligibility, please generate a Preliminary Report for the property using the [Self-Service portal](#).

If you have any questions, please contact Michael Blackmun at AgConservation@sdcounty.ca.gov or (658) 505-6677.

Program Guidelines & Application

Board Documents

Mitigation Bank

FAQs

Select Language

Powered by Google Translate

Popular Services

Online Permits & Research

Online Services Central

Zoning & Property Research

GIS Portal

Permit Applications

Building Forms, Handouts, & Fee Estimator

Discretionary Permit Cost Guide

Check Trust Account Balance

Initial Study Research Report

Self-Service Reports

Subcontractor Disclosures

PDS Document Library

Permit Center Queue Status

Accessory Dwelling Unit Pre-Approved Plans

PDS Public Records

More Services

COUNTYNEWSCENTER

VIDEO: Local Media Finds No Call

County Accepts \$44.3 Million in One-Time Behavioral Health

29 Ballot Drop Boxes Open for District Four Special Primary

More Stories

Click! to SCHEDULE

Building Services Appointments

Click! to SCHEDULE

Land Development Appointments

Purchase of Agricultural Conservation Easement (PACE) Program

Guidelines

MARCH 3, 2021

13

Up Next

Breakout Rooms

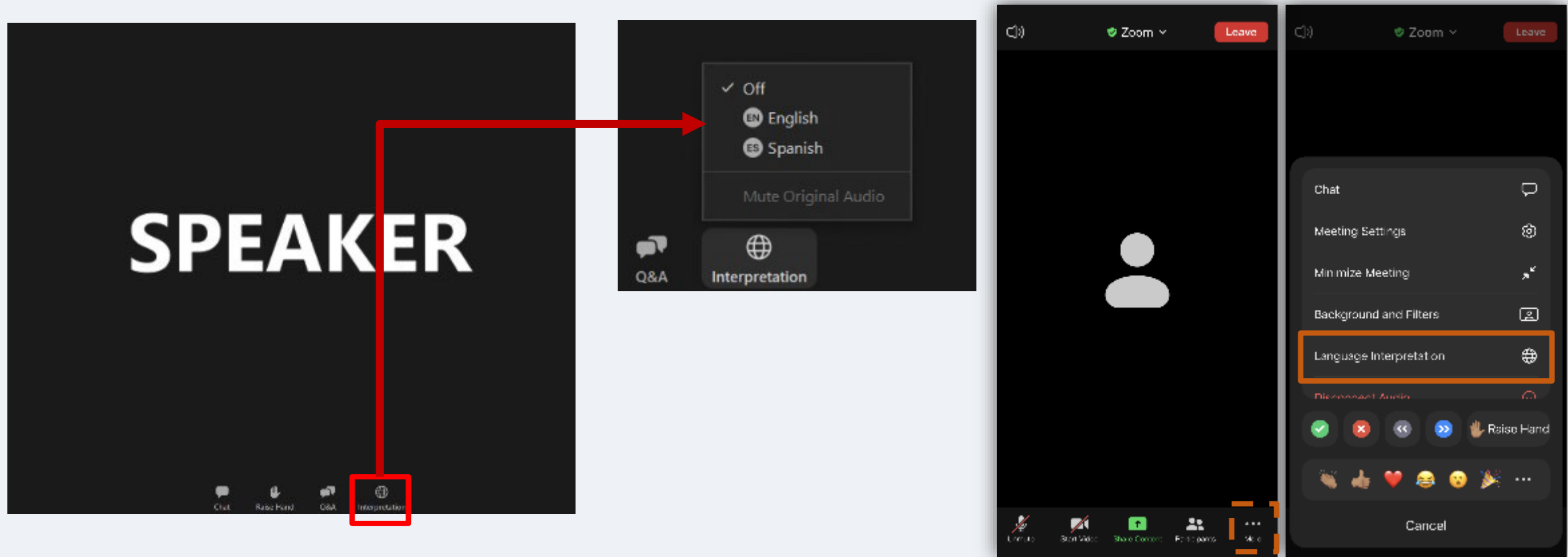
- **40 Minutes**

We Want to
Hear from
YOU

Q&A with
OSEJ Staff &
Presenter

Digital Sticky
Notes &
Whiteboard

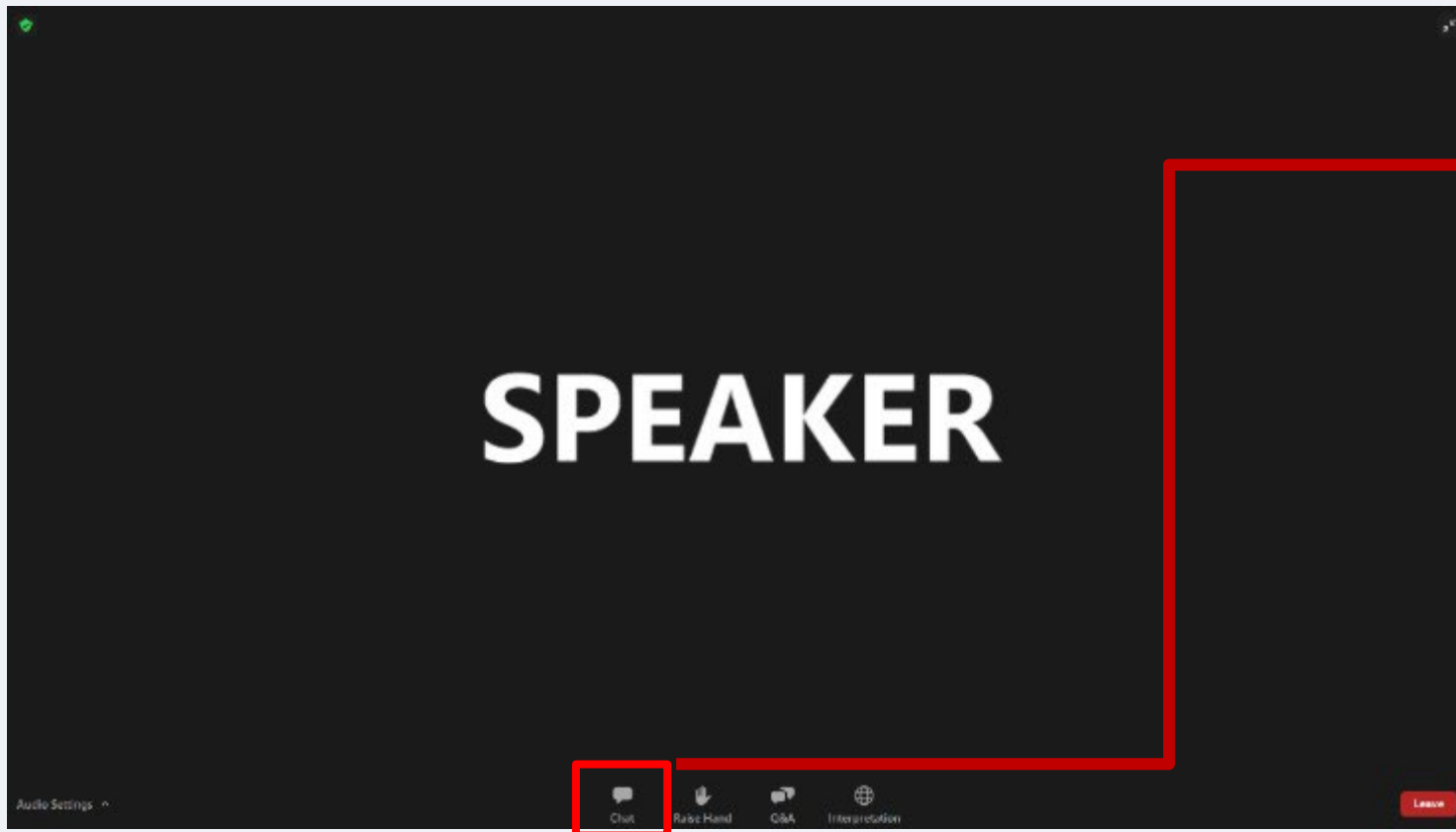
How to use Zoom // *Cómo Usar Zoom*



Please select your language of choice (you must select one option)

Debe seleccionar el idioma de su preferencia (Tiene que escoger un idioma)

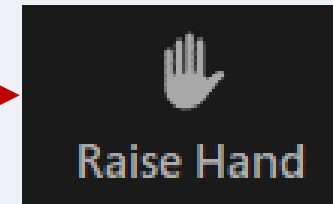
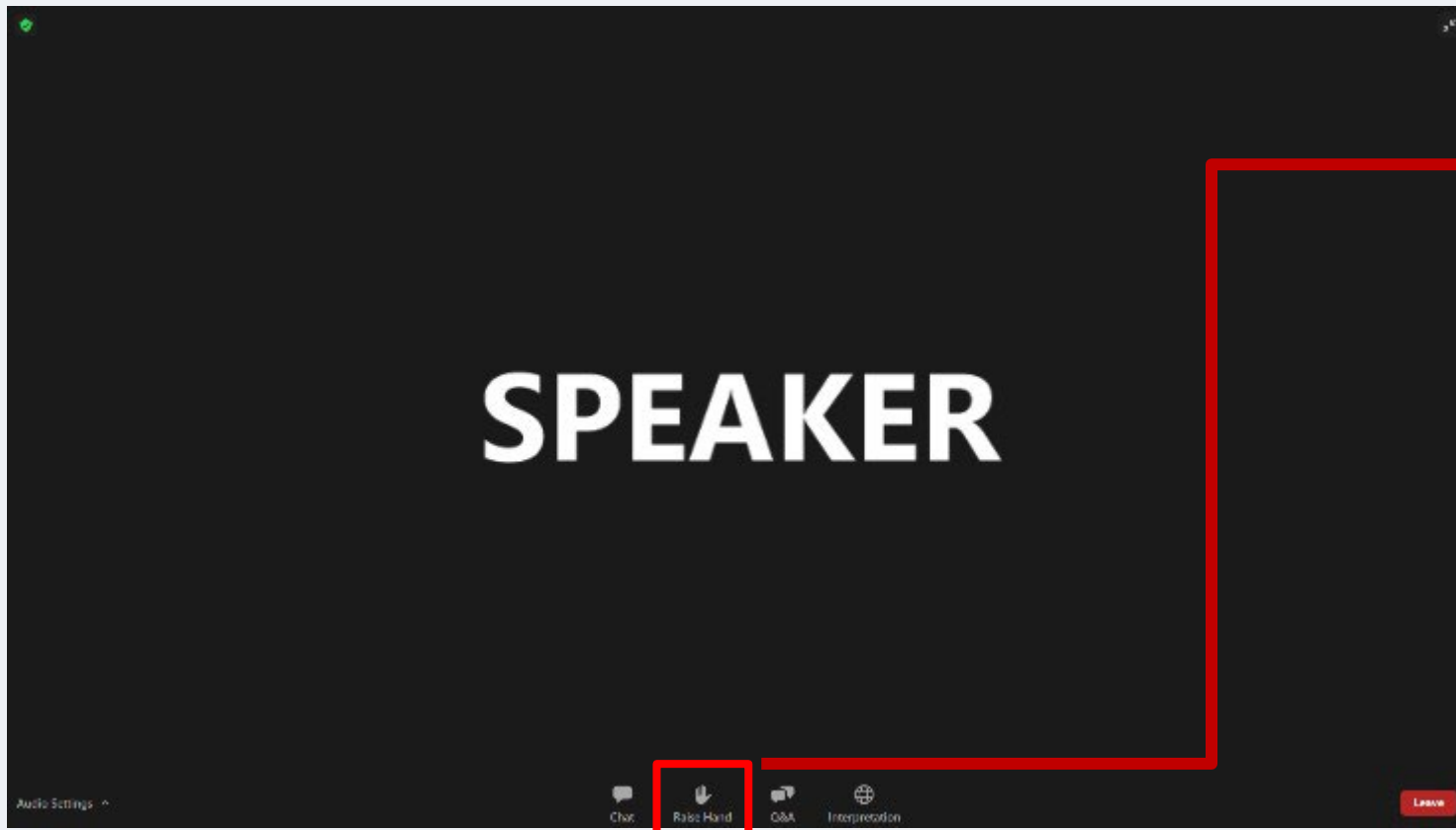
How to use Zoom // *Cómo Usar Zoom*



Comments and questions can be submitted through the chat window.

Los comentarios y las preguntas se pueden enviar a través de la ventana de chat.

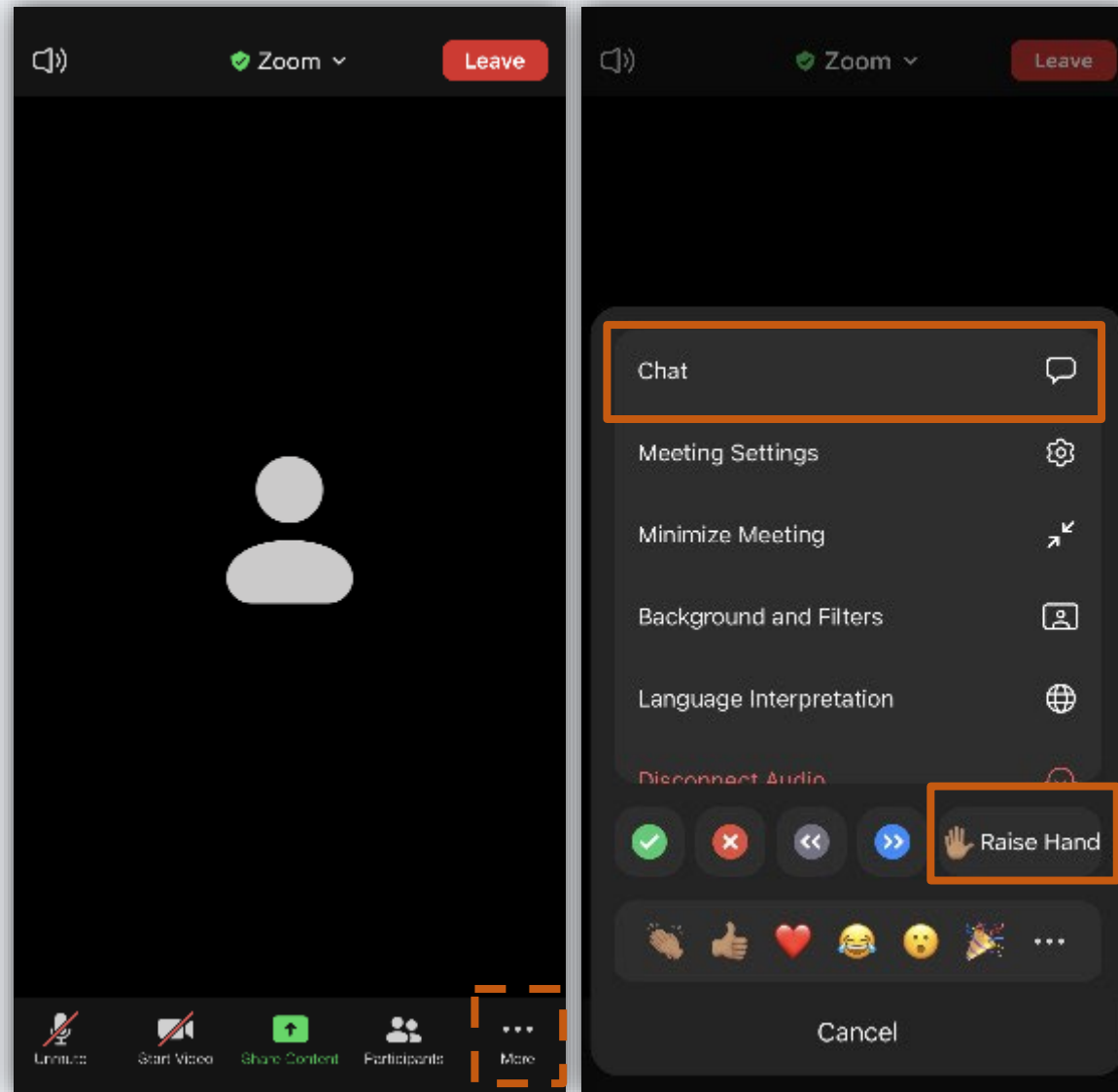
How to use Zoom // *Cómo Usar Zoom*



During the discussion, if you would like to speak over the audio, please raise your hand (otherwise questions and comments can be submitted through the Chat window)

Durante el debate, si desea participar de manera oral, por favor, levante la mano (de lo contrario, las preguntas y comentarios pueden presentarse a través de la ventana de Chat)

On your Phone // *En su teléfono móvil*



Next Steps & Call to Action

**Continued
Outreach**

**Virtual
Workshops**
**June -
September**

**Closing Water
Assembly**
September

**Upcoming
Board
Hearing**

**Public
Comment on
Draft Report**
October

Board Hearing
Winter 2024



County of San Diego

Thank you!

Please Contact - Elise Ruiz:
Elise.Ruiz@sdcounty.ca.gov

Regional Water Equity Website:
www.sandiegocounty.gov/osej/waterequity

Office of Sustainability and Environmental Justice Website:
www.sandiegocounty.gov/osej