

Get to Know the County Budget

2026-27 Recommended Budget



Executive Summary

Ebony N. Shelton

Chief Administrative Officer

Joan Bracci

Assistant Chief Administrative
Officer/ Chief Financial Officer

Brian Albright, General Manager
Finance and General Government Group

Dr. Elizabeth Hernandez, Ph.D., General Manager
Health and Human Services Agency

Dahvia Lynch, General Manager
Land Use and Environment Group

Andrew Strong, General Manager
Public Safety Group

Focused Investments. Collective Action. Community-Built Progress.

The FY 2026–27 Recommended Budget is being developed in a challenging year of uncertainty, including funding streams that are not keeping pace with the overall growth in the cost of doing business, rising costs, and state and federal actions that are creating new pressures on many of the services people rely on. Despite these challenges, this budget highlights what we can achieve working together — public servants, elected officials and you, the people we serve — driven by our shared commitment to stability, access and opportunity.

We invite you to explore the focused investments, savings measures and operational adjustments that protect services and strengthen community resilience.



Board of Supervisors



Paloma Aguirre
Supervisor
District 1



Joel Anderson
Supervisor
District 2



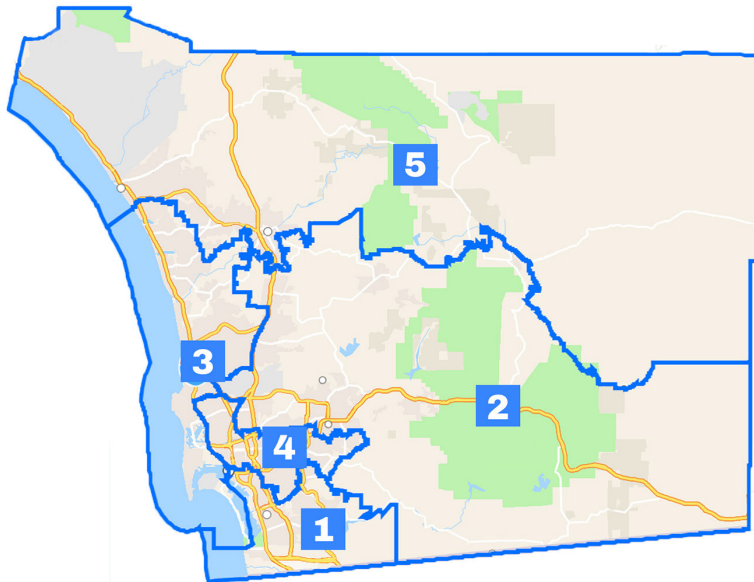
**Terra
Lawson-Remer**
Supervisor
District 3



**Monica
Montgomery Steppe**
Supervisor
District 4



Jim Desmond
Supervisor
District 5



A Message from the Chief Administrative Officer

To our community,

Every day, the County's work begins with you — your voices, your experiences, and your hopes for this region. Your input, whether through community conversations, employee engagement, or everyday interactions, continues to shape not only what we do, but how we do it. That is my commitment to you as a public servant and as your neighbor.



Ebony N. Shelton
Chief
Administrative Officer

This CAO Recommended Operational Plan reflects that shared work. It is grounded in our collective values, shaped by community input, and focused on delivering meaningful, measurable results. It is a values-based budget designed for and by what matters most to the people we serve.

We enter this budget year in a time of uncertainty and transition. Growth in funding streams is not keeping pace with overall growth in the cost of doing business, and state and federal actions are creating new pressures on many of the services people rely on. These challenges are real, but the County has prepared for them. We remain focused on stability, continuity, and the responsibility we hold to our communities.

Working alongside the Board of Supervisors, its Ad Hoc Subcommittees, the County team, and the diverse communities we serve, we have addressed some of our region's most pressing issues. Our budget process is more informed and more community-centered than ever while also remaining aligned with long-term fiscal stability. The Board's measured use of reserves has helped us meet immediate needs without losing sight of the future.

Together, we recognize that this moment calls for investments that protect stability, strengthen systems, and improve outcomes for all people in this region. This recommended budget reflects that reality while acknowledging that community needs are growing. Our investments must meet this moment with intention and impact.

(cont.)

A Message from the Chief Administrative Officer *(cont.)*

Safety net support (H.R. 1 response): Nearly \$24 million helps people keep access to food assistance and health coverage amid federal cuts, with additional funds from unlocked reserves available as needs emerge.

Behavioral Health Services: \$140.7 million in additional spending expands access to care across the continuum of need while helping people receive timely and appropriate support.

Homelessness and housing crisis response: Investments support prevention, housing stability, development, cleanups, inspections, and streamlined land-use review to help people stay rooted in their communities.

Environmental stewardship: A new Pollution Chief will help lead our efforts and strengthen regional collaboration to identify resources and solutions in the Tijuana River Valley.

Community investment: This budget continues the County's commitment to arts and culture, launches a new film industry initiative, and strengthens consumer protection services. It also invests in critical public health efforts that ensure access to the care and resources people need. Further, it enhances public safety through construction of a new Sheriff's substation in Ramona, replacing the more-than-four-decades-old current facility, and begins the planning, environmental review, and design for a new Vista Detention Facility to meet long-term operational goals.

Addressing Prop 36: Justice and public safety systems are strengthened by adding critical staff and resources to ensure departments can meet new responsibilities under Prop 36, which addresses repeat theft and drug offenses while expanding support for treatment participation.

A Message from the Chief Administrative Officer *(cont.)*

This more than \$9 billion recommended budget, an increase of 6 percent over last year, supports the region in numerous ways and reflects a workforce of 20,388 employees. It includes a net increase of 108 positions, driven largely by growth in Consumer Protection, Proposition 36 implementation, and H.R. 1 response and offset by unfilled vacancies, consolidation, and attrition.

Balancing this recommended budget required difficult decisions. We focused on recalibrating. That meant finding new efficiencies, reducing costs, shrinking our facilities footprint, and shifting staff to address evolving responsibilities while avoiding layoffs. We know more challenges lie ahead, and this work continues.

I want to recognize our talented, dedicated County workforce. Public service is at the heart of this organization, and it is our employees who ultimately bring this plan to life. Their professionalism, compassion, and a deep sense of purpose make all these efforts possible. I could not be more grateful and proud to serve alongside them.

Looking ahead, we remain committed to deepening our partnership with you. We will continue to expand access to information, increasing transparency, and create more pathways for participation. Our goal is for everyone to feel informed, welcomed, and connected to how decisions are made and how they can help shape them.

We will keep listening, adapting, and building a future rooted in our shared values and collective purpose. That is what stewardship requires, and what our communities deserve.

Yours in Partnership and Purpose,



Chief Administrative Officer,
Ebony N. Shelton

County Vision, Mission & Values

Building a Resilient Future

Our Mission

Strengthen our communities with innovative, inclusive and data-driven services through a skilled and supported workforce.

Our Vision

A just, sustainable and resilient future for all.

Our Values

- **Integrity** – Honest, ethical behavior and accountability
- **Equity** – Equitable access and engagement across all communities
- **Access** – Transparency and inclusion in service delivery
- **Belonging** – Fostering a sense of inclusion and connection
- **Excellence** – Commitment to high-quality, continuously improving services
- **Sustainability** – Balancing present needs with future generations



County Services

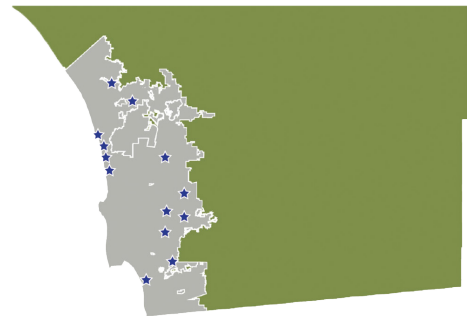
Regional, State & Local Responsibilities

The County of San Diego has a large unincorporated area in addition to 18 incorporated cities and 18 federally recognized tribes. We provide a wide array of services — from social programs and public safety to roads, parks, and libraries in unincorporated areas.

 18 Incorporated Cities

 Unincorporated Area

 Contract Cities



Some cities also contract with the County to provide services.



Regionally, County government provides services like:

- Social services and health programs
- Criminal prosecution, detention facilities and emergency preparedness
- Food and restaurant inspections and beach water monitoring
- Elections

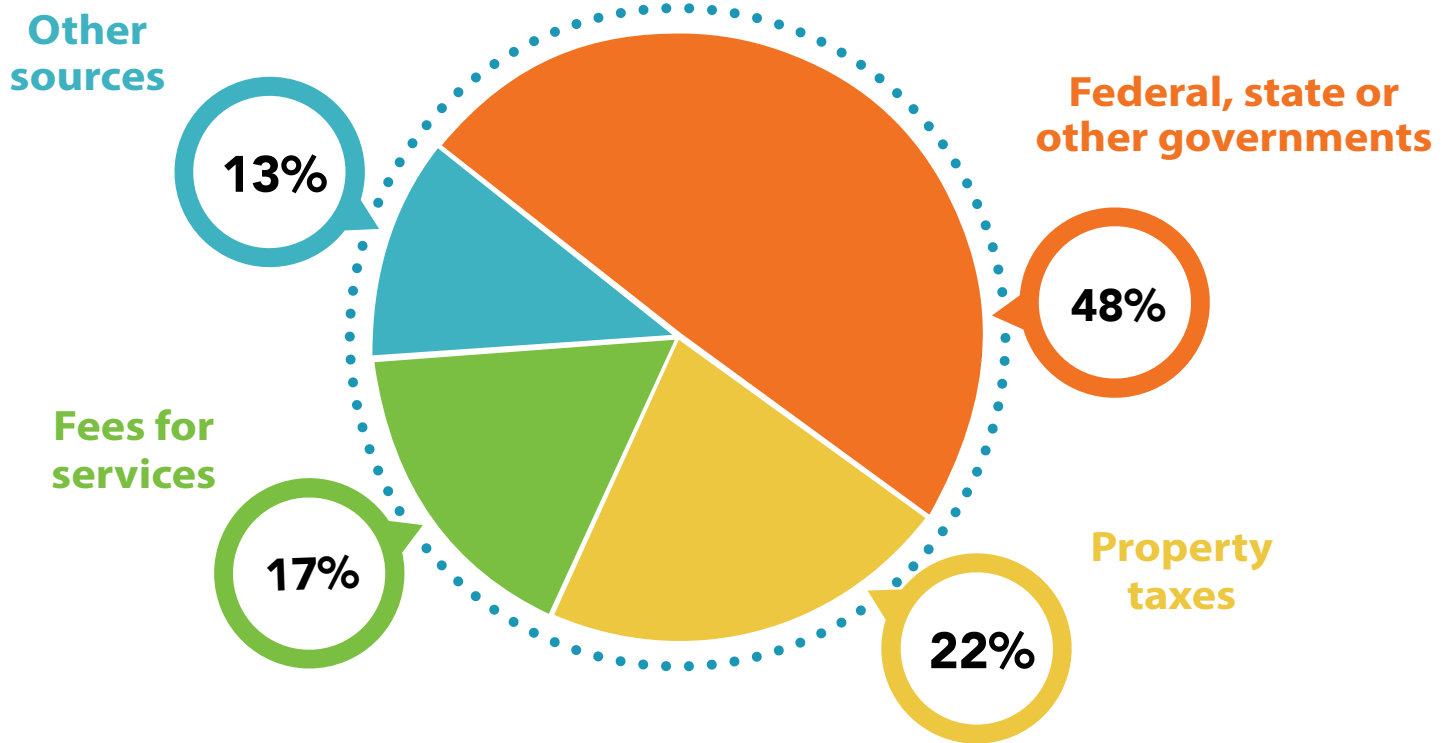


In the unincorporated area, County government provides things a city government would typically do like:

- Law enforcement and fire protection
- Roads, parks and libraries
- Building permits
- Animal shelters and protection

County Budget & Funding Sources

How We Invest in Our Communities

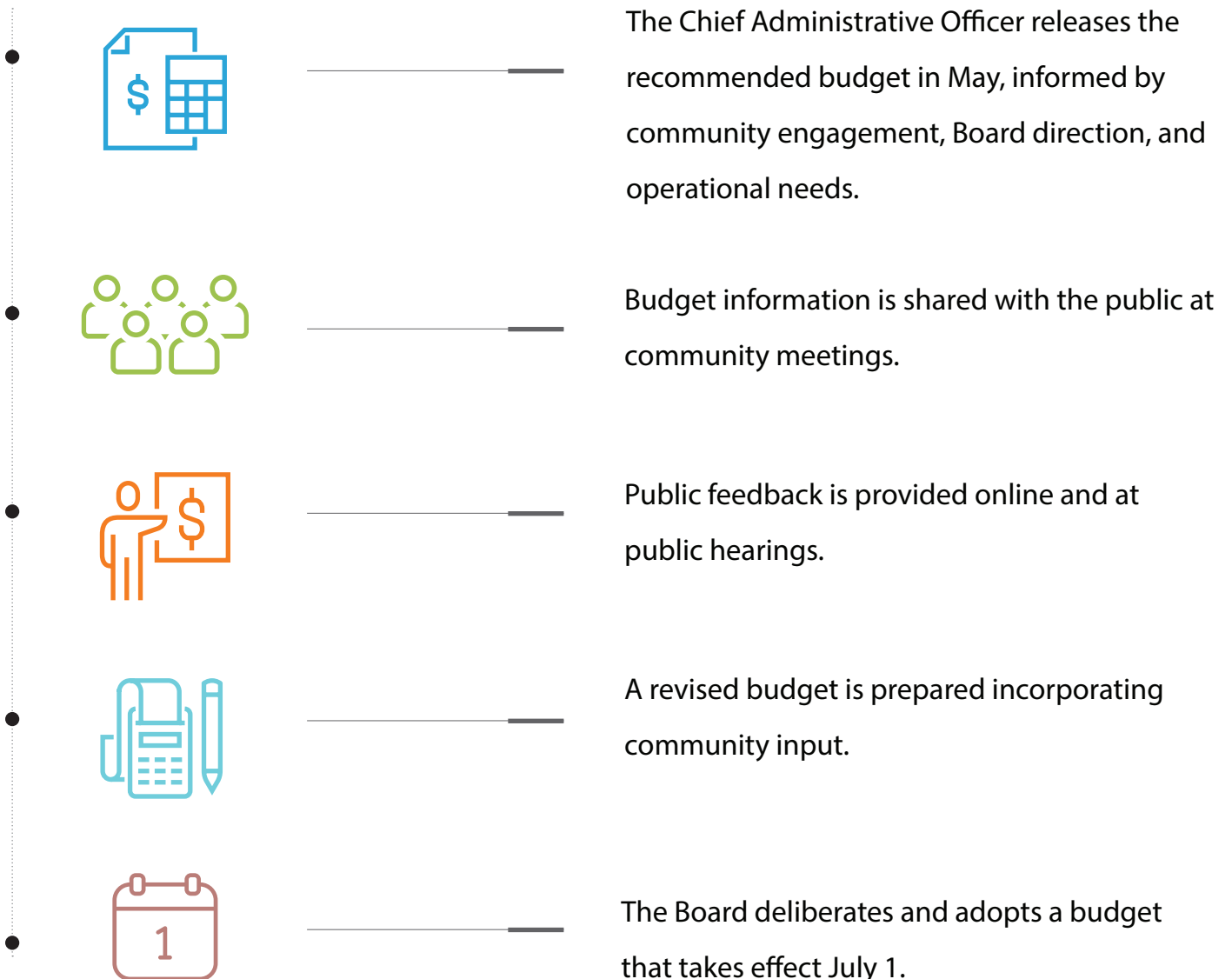


County Budget Process & Next Steps

How the Budget is Built and Your Role

The FY 2026–27 Recommended Budget is being built through close collaboration among the Chief Administrative Officer, the Board of Supervisors and the communities we serve. Community feedback is central to this work — the recommended budget is shaped not in isolation, but through continuous public input, data, and shared priorities. This process emphasizes abundant access to information, meaningful public engagement and coordinated decision-making.

How the Budget Is Developed



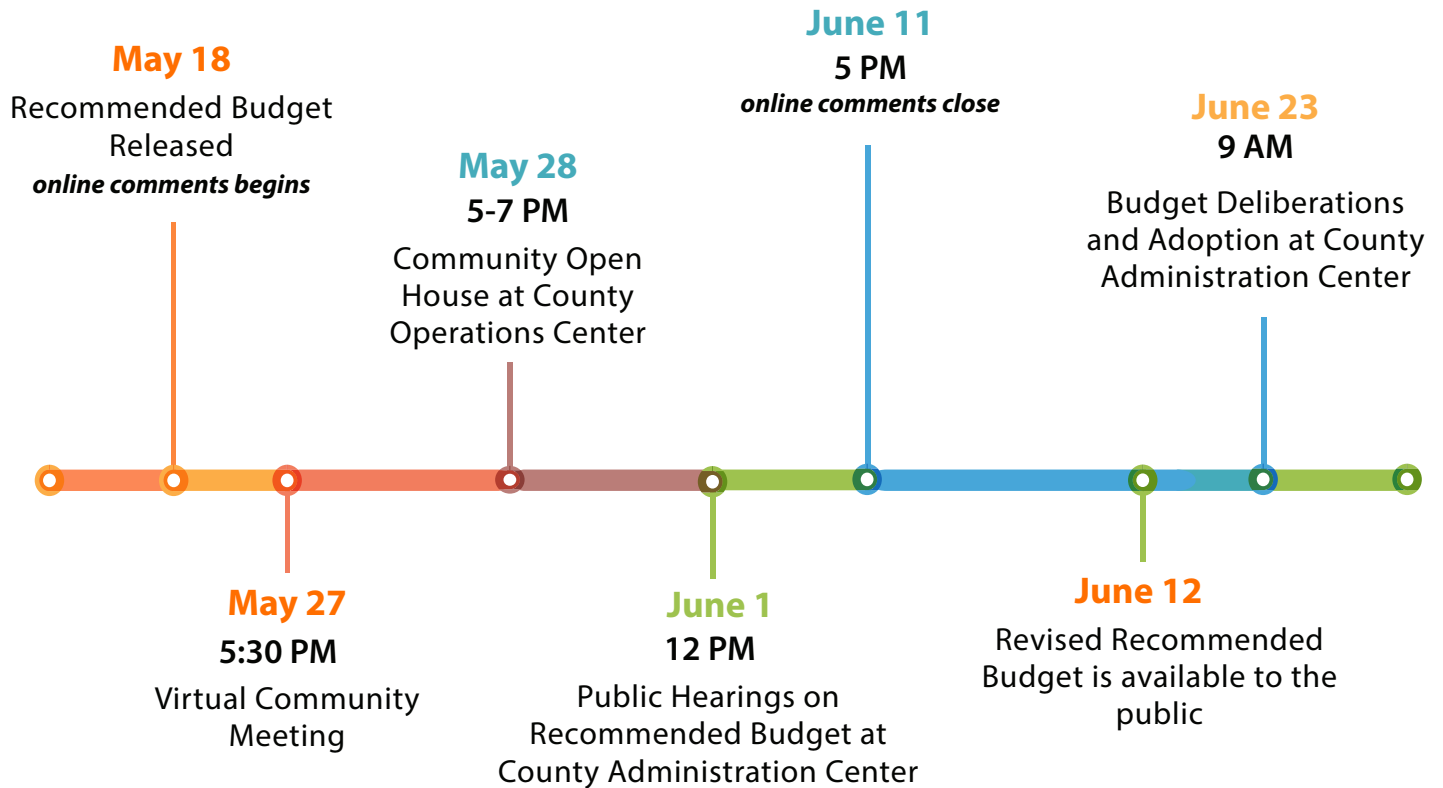
County Budget Timeline

Important Dates and Public Meetings

We Need You

There is still important work ahead before the budget is adopted—join us in getting it across the finish line.

Important Dates



How to Get Involved

Review and Comment: May 18 - June 11

Online at engage.sandiegocounty.gov/county-budget-2026-28

- Email at engage@sdcounty.ca.gov
- Community Virtual Meeting on May 27 at 5:30 p.m.
- Community Open House on May 28 at 5-7 p.m. at the County Operations Center
- Phone or in person on June 1 for the Board of Supervisors Public Hearing: sandiegocounty.gov/cob/bosa/
- Request interpretation at meetings: 619-531-5434 or PublicComment@sdcounty.ca.gov



Visit:
sandiegocounty.gov/budget
for more budget information



Watch Board of Supervisors Meetings



sandiegocounty.gov



[@countysandiego](https://www.youtube.com/@countysandiego)



[@SanDiegoCounty](https://twitter.com/SanDiegoCounty)

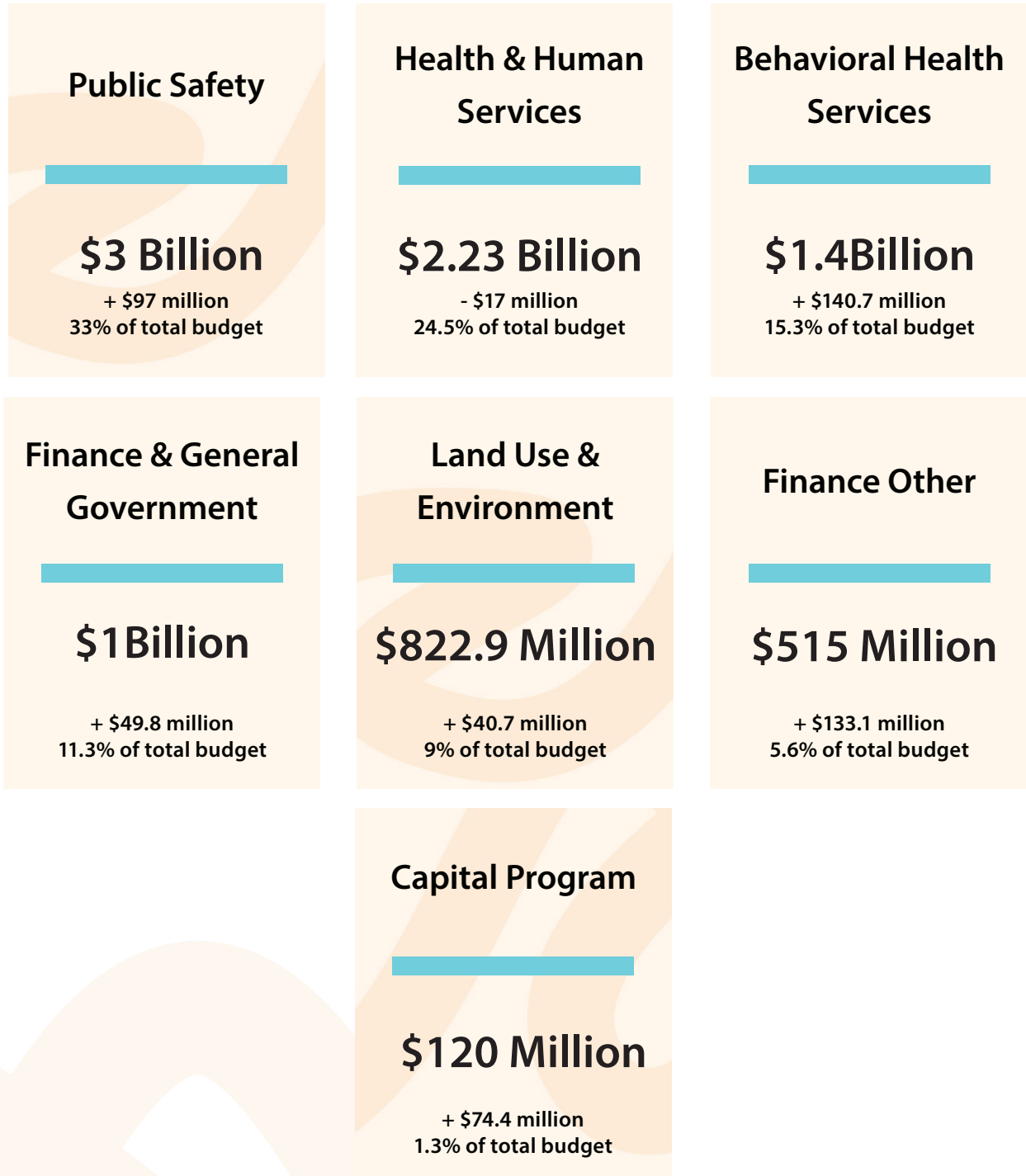


[@sandiegocounty](https://www.facebook.com/sandiegocounty)

Investments by Business Group & Function

Total Budget: \$9.15 Billion+

Increase of \$518.7 million, or 6% over last year



Aligning Our Budget With Community Values

As we developed this year’s budget, it was clear that last year’s passage of H.R. 1 — federal legislation with major funding impacts to safety net services — and other state and federal funding shifts would create real impacts across our region. In response we took the opportunity to recalibrate our approach and stayed focused on what matters most: supporting the people we serve.

We are investing nearly \$24 million to keep critical safety net services in place and strengthen stability in communities countywide. See how these investments align with the key priorities informed by your input.

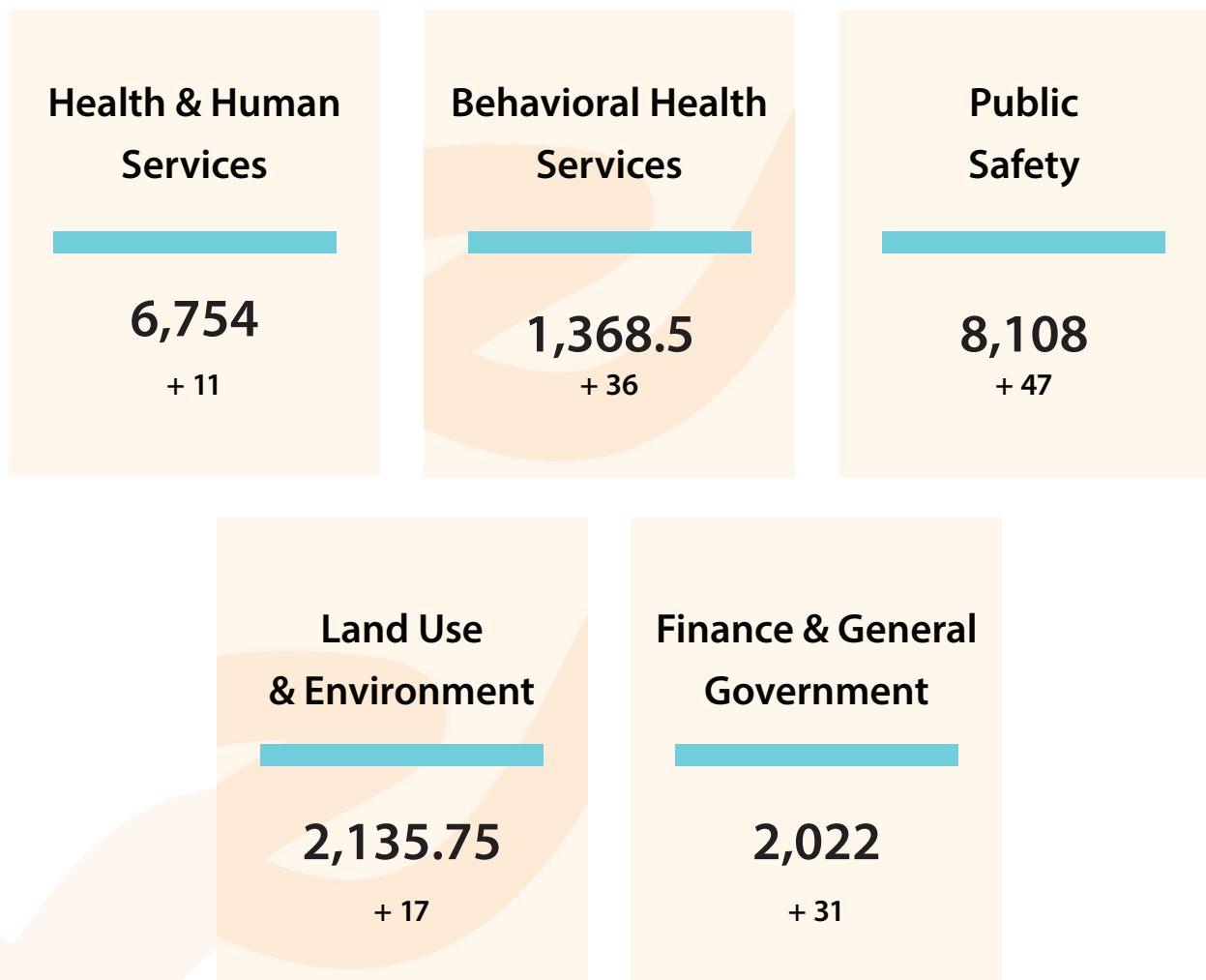


County Workforce

20,388.25 Positions

**An increase of 108 positions, driven largely by growth in Consumer Protection, Prop 36 response and H.R. 1 implementation, while also reducing 114 positions through unfilled vacancies, consolidation and attrition without layoffs.*

Despite these adjustments, the recommended budget continues to prioritize employee support, workforce innovation, and longterm financial sustainability.



Priority Investments

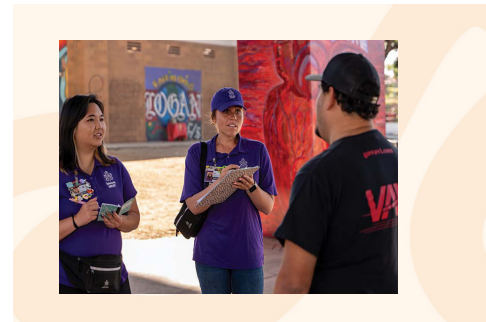
Through surveys, focus groups, emails, calls and more, you told us what mattered to you. See how this budget puts those priorities into action.

*** Some adjustments shown reflect how we are aligning funding with updated strategies, staffing adjustments and operational efficiencies. These changes represent a realignment to match current program models and available funding sources. In several cases, costs have been recategorized or shifted to alternative funding streams, but underlying services remain prioritized and supported.*



Priority Investments

Behavioral Health



Behavioral Health Services provides specialty behavioral health care for Medi-Cal beneficiaries across the region. This plan invests more than \$1.39 billion to enhance access, treatment, and person-centered care for people of all ages. Through BHSA, BH CONNECT, and other initiatives, the County is expanding Medi-Cal benefits, improving crisis response, building the behavioral health workforce and increasing housing opportunities for people with serious mental illness and/or substance use conditions.

Investments include:

- **Residential & Long-Term Care — \$176 million**

Provides clinical care and 24-hour support in a structured, therapeutic setting to people needing a higher level of care.

- **Housing Interventions — \$88 million**

Provides a [full continuum of housing](#) to ensure people are sheltered while receiving treatment and support services. This includes a Flexible Housing Pool pilot as part of the new Transitional Rent benefit that will strengthen long-term housing stability.

- **BH CONNECT Implementation — +\$47.3 million****

Expands community-based behavioral health care through evidence-based programs that support children and adults with complex conditions.

- **Substance Use Treatment for Adults — +\$23 million****

Enhances the network of substance use services and supports, including narcotic treatment programs and a new chemical dependency recovery program.

Priority Investments

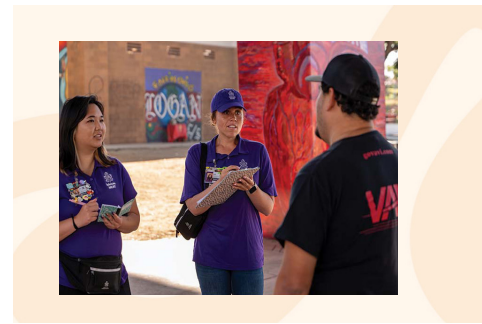
Behavioral Health *(cont.)*



- **Behavioral Health Workforce Development — +\$15.2 million****
Supports development and retention of a skilled public [behavioral health workforce](#) through the [ELEVATE Fund](#) and training and technical assistance for small, diverse community-based organizations.
- **Community Engagement and Network Support — \$14.4 million**
Strengthens community engagement and support providers through technical assistance, ensuring meaningful involvement of all 29 state-identified stakeholder groups (BHSA) in shaping behavioral health work in the region.
- **Behavioral Health Wellness Campus — +\$12.7 million****
Funds early design and development of the new integrated campus on County-owned property on Rosecrans Street in the Midway District, which will combine care, housing, and supportive services. The County was [awarded a \\$99.5 million state behavioral health grant](#) for this project in March 2026.
- **[Crisis Residential Treatment](#) — +\$9.6 million****
Increases capacity for community-based alternatives to hospitalization and strengthens diversion and step-down services.

(cont.)

Priority Investments Behavioral Health



- **Behavioral Health Facilities — +\$3.5 million****
Supports facility improvements to develop new [Children’s Crisis Residential Care](#), [Substance Use Recovery Treatment Services](#) programs through State grant funds.
- **Child & Youth Behavioral Health — +\$2 million****
Prioritizes early intervention and crisis stabilization for children and youth.
- **In-Home Outreach Teams — +\$1.1 million****
Helps connect people with serious mental illness to ongoing treatment and support.



Priority Investments

Environmental Sustainability



For decades, South Bay communities have faced a cross-border pollution crisis that disrupts daily life, impacts health and limits access to clean beaches. This budget strengthens our commitment to health, safety and transparency by expanding monitoring, improving public reporting and outreach, and providing same-day beach water quality updates. Additional investments supporting broader environmental protections across the region that build safer, healthier communities countywide.

Investments include:

- **Regional Watershed Protection & Ocean Pollution Prevention — \$25.6 million (+\$2 million)****

Supports [watershed protection efforts](#) that reduce ocean pollution and promote clean beaches, healthy ecosystems and safe drinking water.

- **Waste Diversion, Emissions Reduction & Closed Landfill Management — \$25 million (+\$3.9 million)****

Integrates programs that divert waste from landfills and reduce greenhouse gas emissions with long-term monitoring and management of closed landfills to protect air and groundwater quality and strengthen regional environmental safeguards.

- **Hazardous Materials Oversight & Incident Response — \$17.6 million (+\$42,000)****

Provides comprehensive protection of public health and environmental safety by permitting and inspecting more than 14,000 hazardous materials facilities and strengthening the [Hazardous Incident Response Team's](#) capacity to respond to and mitigate chemical emergencies and public complaints.

(cont.)

Priority Investments

Environmental Sustainability



- **Farmland Preservation, Open Space Protection & Agricultural Safeguards — \$17.3 million (+\$660,000)****
Protects the region’s agricultural economy and natural landscapes by permanently preserving farmland, expanding [protection of open space](#) and enhancing efforts to detect and [prevent invasive pests](#) that threaten crops and local ecosystems.
- **Climate Action Plan-related Greenhouse Gas (GHG) Reduction Investments — \$15 million (+3.9 million) *(includes some programs referenced in other areas of the budget)***
Implementation of the [County’s Climate Action Plan](#) measures that cut GHG emissions, improve air quality and strengthen long-term climate resilience.
- **Groundwater Resource Management — \$3.4 million**
Supports long-term groundwater management and protects regional water security.
- **Green Building & Solar Energy Promotion — \$1.4 million**
Promotes green building practices and accelerates solar energy adoption throughout the region.
- **EV Roadmap Expansion & Fleet Electrification — \$1.2 million**
Advances the [County’s EV Roadmap](#) by replacing fleet vehicles with electric vehicles and installing new charging stations at sites including Campo RMS, Julian RMS, Pine Valley Park, Tijuana River Valley Regional Park, El Monte Park and Lake Morena Park.

(cont.)

Priority Investments Environmental Sustainability



(cont.)

- **Tree Planting — \$500,000**

Plants 1,000 new trees to improve air quality, expand shade coverage and support healthier neighborhoods. In addition to planting trees on County properties in support of our climate action goals, our private property tree program gives unincorporated area private property owners or their designees free 15-gallon trees to plant themselves.

- **Pollution Chief for Tijuana River Valley Regional Coordination**

Funds a new Pollution Chief to lead regional collaboration, identify resources and drive longterm solutions for the Tijuana River Valley. This will cover recruitment, salary and benefits for the incumbent, along with start-up costs related to integrating the role.



Priority Investments

Housing and Homelessness



When a senior can afford rent, a young adult finds housing stability or a family moves into safe shelter, our whole region benefits. This plan invests in practical, people-centered solutions — from rental support and [safe parking](#) to [innovative housing](#) programs and real-time transparency — so more neighbors can find a path to stability and home.

Investments Include:

- **\$93.1 million to [expand housing resources](#) for vulnerable residents**

Supports the development of affordable and supportive housing, rental assistance and services that help families achieve self-sufficiency.

Including:

- **\$16 million total**, including \$11.6 million prior year funds, for the [Regional Homeless Assistance Program](#) and Inclement Weather Program. Provides safe, short-term housing through hotel placements and supplies hotel/motel vouchers during cold or wet weather for residents of unincorporated communities needing emergency shelter.
- **\$3.4 million for the [Housing our Youth Program](#)**
Continues dedicated housing and supportive services for youth ages 18–24, connecting hundreds of young adults to stability and long-term well-being.
- **\$2.8 million in prior year funds for the [Shallow Rental Subsidy Program](#)**
Launches a new round of support for 200 senior households, offering a \$500 monthly subsidy for 18 months to prevent homelessness and support housing retention.

(cont.)

Priority Investments Housing and Homelessness



(cont.)

- **\$1.6 million in prior year funds to extend the LGBTQ+ Innovative Housing Program**
Continues case management, supportive services, and housing navigation for LGBTQ+ individuals experiencing homelessness.
- **\$1.6 million in prior year funds for the [Bancroft](#) and [Magnolia Safe Parking Programs](#)**
Operates 43 safe parking spaces with onsite services to support individuals living in vehicles as they transition to permanent housing.
- **\$29.2 million for housing support and [development services](#)**
Funds sustainable housing development, affordability programs, ADU and tiny home initiatives, homelessness cleanup and assistance, inspections, and streamlined land use review.
- **\$600,000 for the District Attorney's [Shelter Ready app](#)**
Enhances realtime transparency by supporting an innovative tool that connects people experiencing homelessness with emergency shelter and safeparking programs.



Priority Investments Infrastructure



Modern, reliable infrastructure supports daily life and the County team that keep communities running. This plan invests in essential County systems and facilities—from stormwater and roads to parks, jails and libraries—ensuring upgrades reflect community needs and improve safety, access and quality of life.

Investments include:

- **Road Safety and Maintenance Investments — \$265.9 million (+\$19 million)****
Funds enhancements such as new traffic signals, curb ramps, pedestrian crossings, guardrails and supports maintenance of 2,000 miles of County roads in unincorporated communities to ensure safe, reliable travel.
- **Facility Maintenance and Safety Upgrades — \$73.3 million**
Funds critical repairs, facility maintenance and major safety upgrades across County facilities, including:
 - *Repairs at San Diego Central Jail, new cameras at George F. Bailey Detention Facility and East Mesa Reentry Facility, and improvements at Rock Mountain Detention Facility.*
 - *HVAC and roof upgrades at the County Emergency Operations Center, along with HVAC improvements at the San Marcos Offices and Edgemoor Skilled Nursing Facility.*
 - *Installation of electric vehicle charging infrastructure across the County.*
 - *Maintains safe, clean park and library facilities through ongoing maintenance, repairs and weed management.*

(cont.)

Priority Investments

Infrastructure *(cont.)*



- **Stormwater and Flood Prevention — \$61.7 million**
Supports storm flood prevention through maintenance of culverts, channels, and storm drains, and funds the operation and maintenance of the County's sewer system and water districts.
- **Parks & Recreation Operations — \$37.7 million (+\$1.8 million)****
Operates 159 park facilities, 60,000 acres of parkland and 398 miles of trails for residents and visitors to enjoy.
- **Ramona Sheriff Station Replacement — \$34.3 million**
Builds a new Ramona Sheriff Station to replace the existing facility constructed in the 1970s, enhancing public safety services in the region.
- **Library Operations — \$71.5 million (+\$2.4 million)****
The County Library system operates 33 branch libraries, four electric outreach vans and five automated book kiosks. This budget maintains hours of operation to ensure access to materials, programs and other resources. In 2025, the system circulated 11.79 million items, ranking as one of the largest library systems in California, the nation and the world.
- **Vista Detention Facility Planning — \$3 million**
Begins planning, environmental review and design for a new Vista Detention Facility to meet long-term operational needs.

(cont.)

Priority Investments Infrastructure



- **Community Facility Investments**

Continues investments in new and upgraded facilities that serve communities, including the [Casa de Oro Library](#) — opening summer 2026 with double the space — and the [Epicentre in Mira Mesa](#), reopening as a County operated community and teen center shaped through extensive community engagement.



Priority Investments

Public Safety



Safety is more than response times — it's preparedness, prevention and care for all people. This budget strengthens emergency response, supports people in custody with needed medical and behavioral services and expands consumer protection so residents are treated fairly. It helps protect families, uphold dignity and invests in public systems that work the way people expect and deserve.

Investments include:

- **Firefighting Operations and Emergency Medical Services — \$84.5 million (+\$8 million)****
Strengthens [firefighting and emergency medical services](#) in unincorporated areas, including added staffing for water tender trucks that deliver large volume water to fire scenes.
- [County Fire Night Flying Helicopter](#)
Expected to be ready to serve in FY 2026-27, it represents a major regional investment that expands critical nighttime wildfire and emergency response capability.
- [Citizen's Law Enforcement Review Board \(CLERB\)](#) — \$600,000
Supports CLERB's expanded oversight role, including outreach, policy development, investigations and specialized medical case expertise.
- **Community Care Coordination and [Alternatives to Incarceration](#) — \$5.5 million**
Connects justice-involved people with significant health and behavioral health needs to housing, treatment, medical care, education and employment.

(cont.)

Priority Investments

Public Safety



(cont.)

- **Justice Prevention, Diversion & Reentry Services — \$4.5 million**

Bolsters prevention, diversion and reentry support, including the newly implemented Resource and Reentry Hub, where individuals can access case management, peer support, treatment, healthcare and tailored assistance following jail, arrest or law enforcement contact.

- **Expanding Community-Led Violence Prevention in Spring Valley — \$250,000**

Supports implementation of the No Shots Fired program through outreach, mentorship and wraparound services aimed at reducing gang and gun violence using a community-driven, prevention-focused approach.

- **Gun Violence Reduction Program — \$227,000**

Supports a public health-aligned approach to reducing suicide, domestic violence and community violence through early intervention, improved crisis response and collaboration between public health, law enforcement and community partners.



Priority Investments Vulnerable Populations



The County's safety net protects our most vulnerable neighbors, providing a range of services, from food and healthcare to in-home support and legal protections. This budget prepares the region for the impacts of H.R. 1 — federal legislation that changes eligibility and for many support services so families can stabilize and stay connected to opportunity. Meanwhile, [data-driven dashboards](#) provide insight into how these investments drive meaningful progress across the region.

Investments include:

- **Eligibility and Self Sufficiency Services — \$852 million**
Supports CalFresh, CalWORKs, Medi-Cal and General Relief, including \$23.7 million tied to federal H.R. 1 CalFresh administrative requirements and related staffing to help residents keep their benefits.
- **Child and Family Well-Being — \$502 million**
Invests in family strengthening, prevention and child protection services, with over \$163 million dedicated to foster and adoptive families.
- **In-Home Supportive Services (IHSS) — \$248.7 million**
Includes \$25.2 million in new funding to support roughly 50,000 vulnerable adults and people with disabilities with home and personal care assistance.
- **Health and Medical Care in Jails — \$198.9 million (+\$17.9 million)****
Supports medical care for adults in custody.

(cont.)

Priority Investments Vulnerable Populations



(cont.)

- **Health and Medical Care for Youth in Custody — \$14.36 million (+\$2.38 million)****
Maintains and enhances health and medical care services for youth in custody.
- **Animal Services — \$12.2 million (+\$500,000)****
Funds enforcement, [sheltering](#) and [veterinary care](#) in unincorporated areas and [adoption](#) services countywide.
- **Immigrant Legal Defense Program — \$13.2 million**
Provides [legal representation](#) to detained immigrants and unaccompanied minors in removal proceedings. This represents \$5.5 million in one-time funding and \$7.7 in on-going funding, which is an increase of \$2.7 million over last year.
- **Sheriff's Office (Proposition 36) — \$15.3 million**
Includes adding 23 full-time employees to support increased jail bookings and related operational needs.
- **Public Defender (Proposition 36) — \$4.82 million**
Includes adding 18 full-time employees to meet higher caseloads and ensure timely, constitutionally required legal representation for people who cannot afford an attorney.
- **Probation (Proposition 36) — \$2.97 million**
Includes adding 15 full-time employees to expand pretrial and felony supervision and support increased assessment, treatment and housing needs.

(cont.)

Priority Investments Vulnerable Populations

(cont.)

- **Library WiFi Access** — \$381,000 (+\$35,000)**
Provides free, 24/7 WiFi at County library locations.
- **Library High School Program** — \$245,000 (+\$7,000)**
Continues the program that helps adults earn their high school diplomas.
- **Citizenship Training** — \$221,000 (+\$20,000)**
Offers training through County Library to support County residents pursuing citizenship.
- **Child Support Services**
Supports financial, emotional and physical wellbeing of nearly 39,900 families across the region.



Other Highlights



The County invests in a broad range of programs and services that strengthen community health, safety and quality of life every day. These investments expand access to public health protection, consumer fairness, pet wellness, environmental safety and essential services residents rely on across the region.

Investments include:

- **Public Health Services — \$235.6 million**

Protects community health through epidemic prevention, disease control, public health centers, home visiting programs and pharmaceutical services that ensure broad access to care.

- **Food Safety Inspections — \$18 million (+\$1.6 million)****

Safeguards public health by inspecting 15,700 restaurants, food trucks and other food facilities, supporting 530 temporary events and conducting 1,200 complaint investigations and 520 foodborne illness investigations.

- **District Attorney Consumer Protection Expansion — \$16.3 million (+\$11million)****

Expands countywide consumer protection activities to investigate and evaluate reports of fraudulent and unfair business practices and take appropriate action to protect the public.

- **Arts & Culture and Film Office — \$3.25 million**

Investment in arts and culture initiatives and support the implementation of a film office.

(cont.)

Other Highlights

(cont.)



- **Consumer Fairness and Public Protection Unit — \$2.4 million**
Establishes a new eight-person team in County Counsel focused on consumer protection, product safety, financial abuse, unfair competition, environmental justice and economic fairness, broadening efforts to protect consumers in coordination with other enforcement agencies, such as the San Diego County District Attorney and City Attorneys.
- **Vector Control and Mosquito Borne Disease Prevention — \$16 million (+\$455,000)****
Monitors and treats more than 1,600 mosquito breeding sites to protect residents from West Nile virus and other mosquito borne illnesses.
- **Beach Water Quality Testing — \$1.9 million (+\$257,000)****
Delivers same day beach water quality testing and public reporting at 45 locations, helping residents stay informed and safe.



Other Highlights

(cont.)



- **Ethics, Compliance & Labor Standards — \$300,000**

Adds the equivalent of two fulltime positions to enhance labor standards enforcement, strengthen safety in County parks, and improve contract compliance efforts.

- **Mobile Veterinary Surgical Unit**

Brings spay/neuter services and basic pet wellness directly to underserved and high need communities in the unincorporated areas, improving animal health and accessibility for families.





www.sandiegocounty.gov

1600 Pacific Highway, San Diego, CA 92101