

Attachment A – Planning Documentation

Pala Fence

General Plan

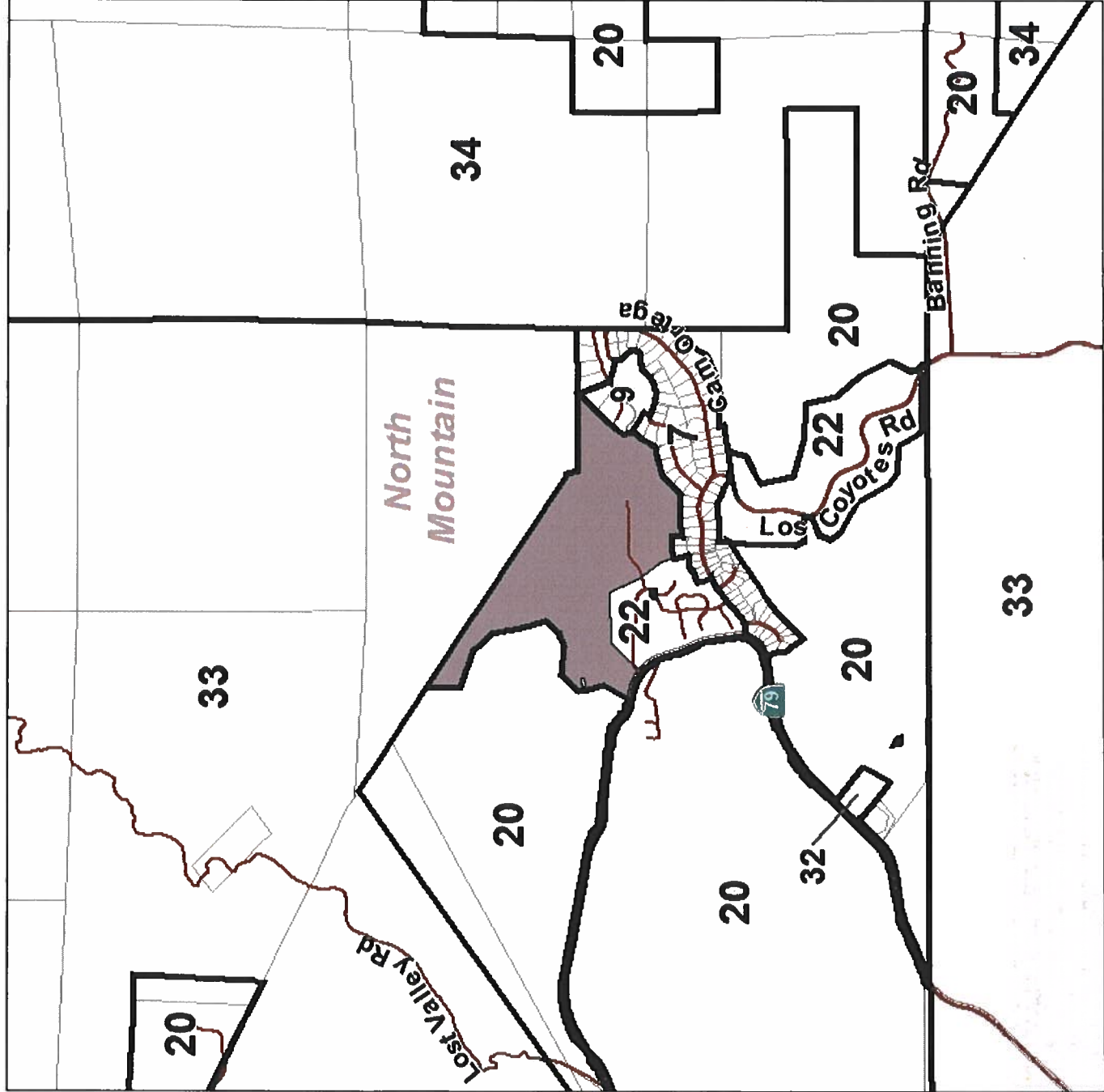
North Mountain Community Plan Area

- (7) Village Residential (VR-2.9)
- (9) Semi-Rural Residential (SR-1)
- (13) Semi-Rural Residential (SR-4)
- (20) Rural Lands (RL-80)
- (22) Specific Plan Area
- (32) Public/Semi-Public Facilities
- (33) Public Agency Lands
- (34) Tribal Lands

- Site
- Roads
- Parcels
- Planning



Date: 1/22/2019
Path: P:\prog\2015-STP-15-004_01\2219plan.mxd



Pala Fence

Zoning

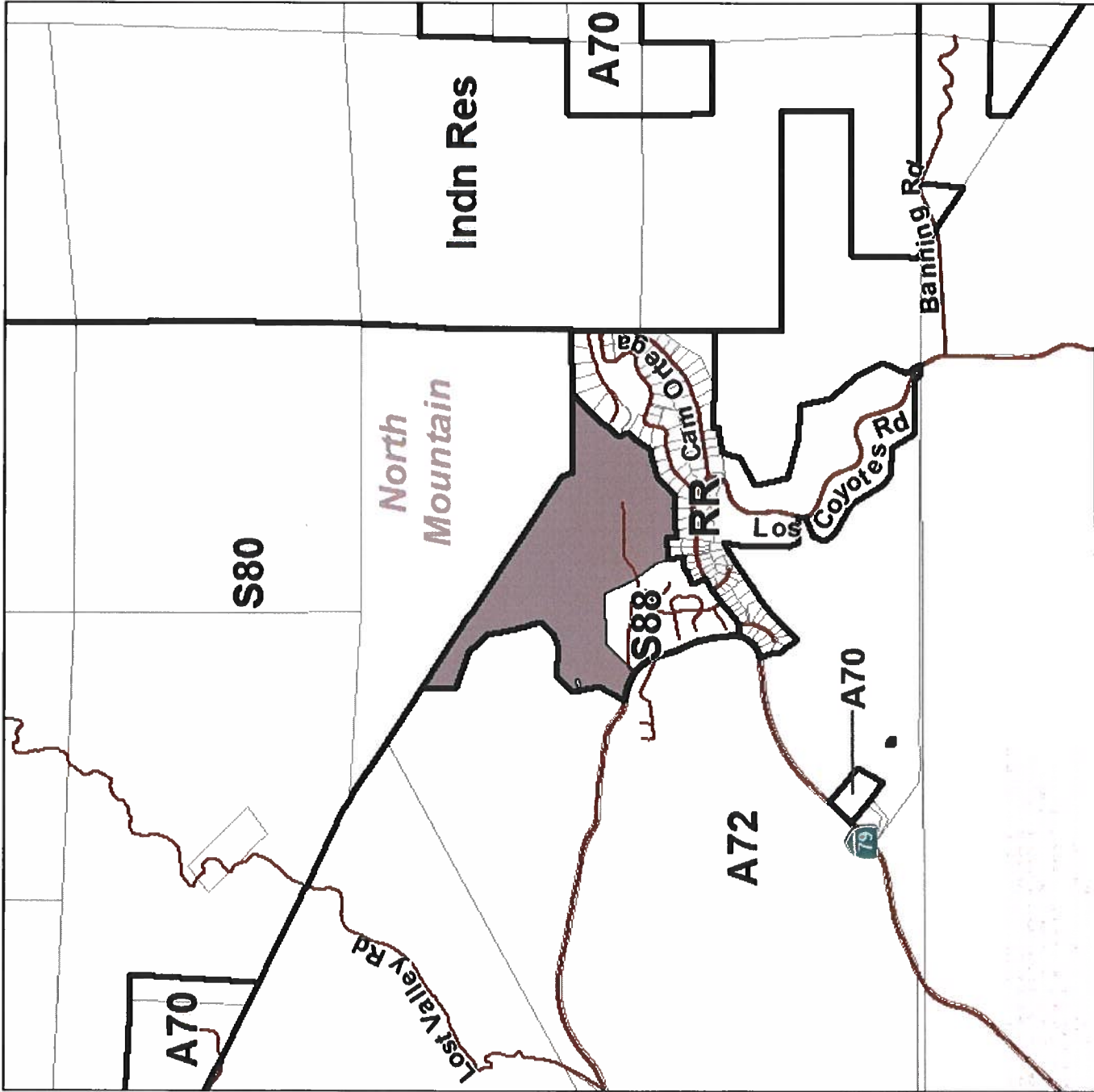
North Mountain Community Plan Area

- A70 - Limited Agricultural
- A72 - General Agricultural
- Indn Res - Indian Reservation
- RR - Rural Residential
- S80 - Open Space
- S88 - Specific Planning Area

Site
Roads
Parcels
Zoning



Date: 1/22/2019
File: P:\mg\2015-STP-15-004_012219\main.mxd



Pala Fence

North Mountain Community Plan Area



Site



Roads

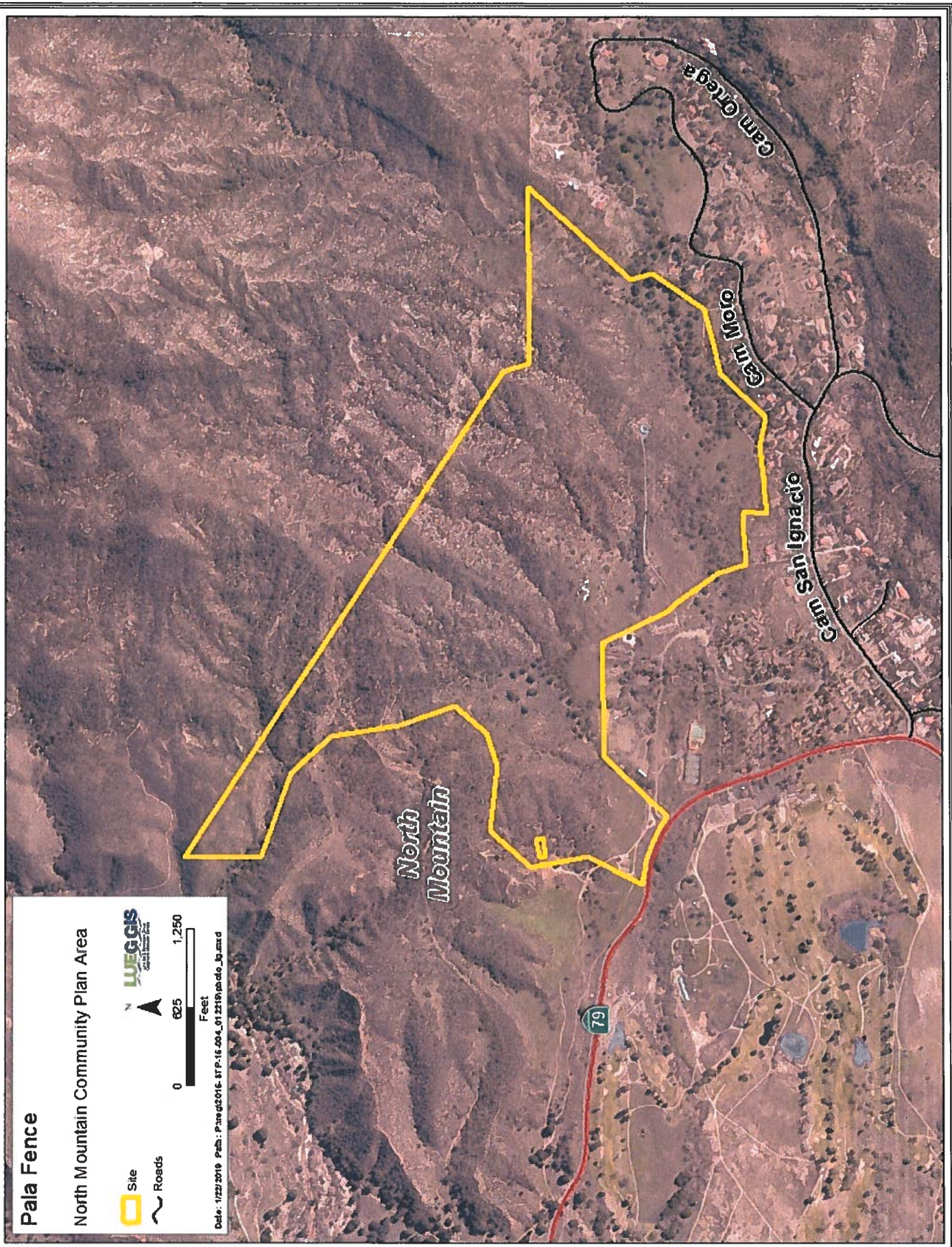


LU
EGGIS
LAND USE GIS



Feet

Date: 1/27/2019 Path: P:\arcgis2016-17\F-16_004_01\2219\pala_fence.aprx



Red Lined

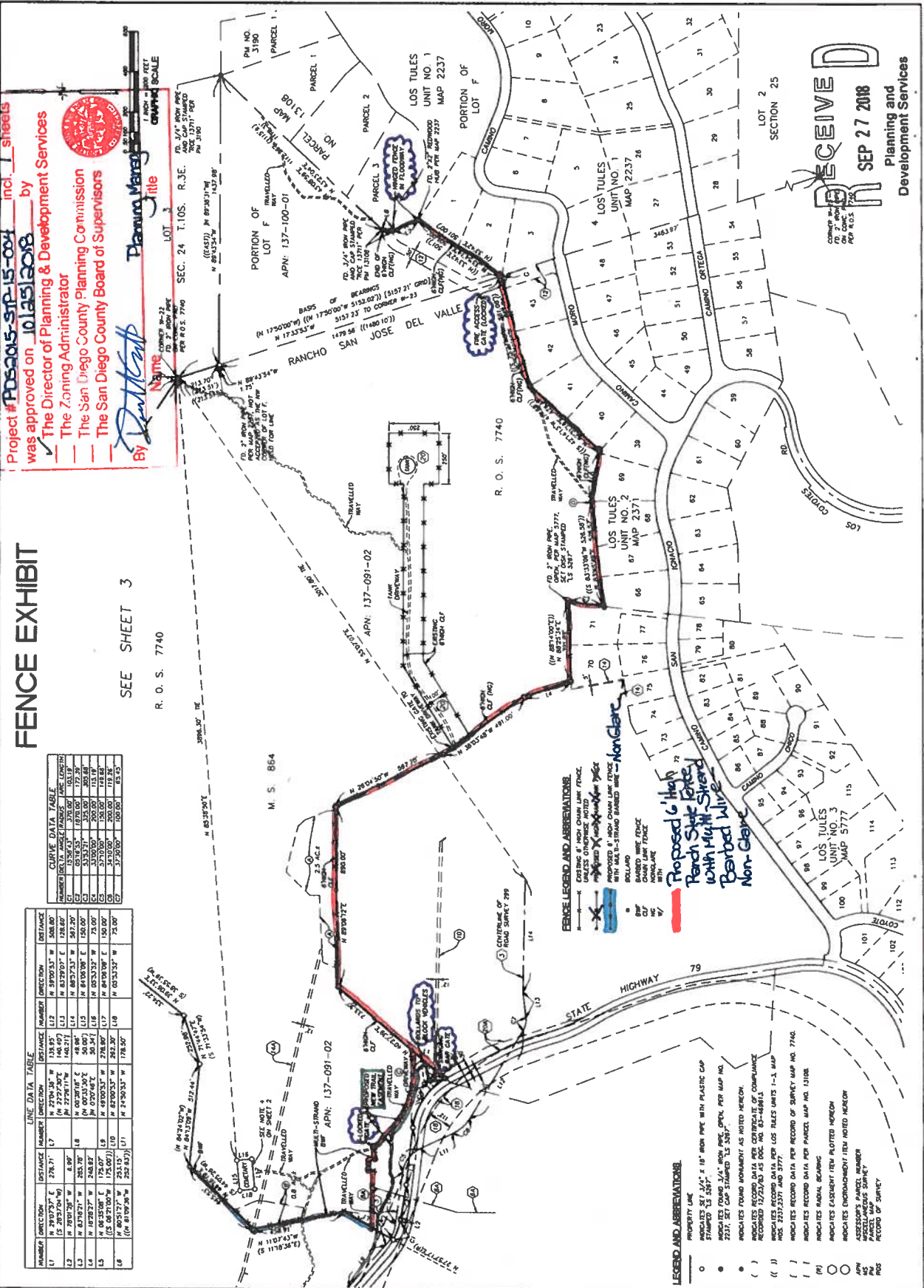
FENCE EXHIBIT

Project # **PD0015-SP-15-04** incl. sheets by **10.14.15.2018** by
 The Director of Planning & Development Services
 The Zoning Administrator
 The San Diego County Planning Commission
 The San Diego County Board of Supervisors

By *[Signature]* Planning Manager
 Title

PROJECT	WARNER SPRINGS RANCH HIGHWAY 79 ESCONDIDO, CA. 92025
DATE	12/15/15
DRAWN	12/15/15
CHECKED	12/15/15
SCALE	AS SHOWN
SHEET NO.	1
TOTAL SHEETS	1

CIREMELE SURVEYING, INC.
 164 S. ESCONDIDO BLVD.
 ESCONDIDO, CA. 92025
 (760) 489-2200



SEE SHEET 3

R. O. S. 7740

M. S. 864

NUMBER	BEARING	LENGTH	AREA
1	N 22°04'30" E	178.87	178.87
2	N 89°58'37" W	178.87	178.87
3	N 89°58'37" W	178.87	178.87
4	N 00°30'18" E	48.86	48.86
5	N 00°30'18" E	50.00	50.00
6	N 00°30'18" E	50.00	50.00
7	N 00°30'18" E	50.00	50.00
8	N 00°30'18" E	50.00	50.00
9	N 00°30'18" E	50.00	50.00
10	N 00°30'18" E	50.00	50.00
11	N 00°30'18" E	50.00	50.00
12	N 00°30'18" E	50.00	50.00
13	N 00°30'18" E	50.00	50.00
14	N 00°30'18" E	50.00	50.00
15	N 00°30'18" E	50.00	50.00
16	N 00°30'18" E	50.00	50.00
17	N 00°30'18" E	50.00	50.00
18	N 00°30'18" E	50.00	50.00
19	N 00°30'18" E	50.00	50.00
20	N 00°30'18" E	50.00	50.00
21	N 00°30'18" E	50.00	50.00
22	N 00°30'18" E	50.00	50.00
23	N 00°30'18" E	50.00	50.00
24	N 00°30'18" E	50.00	50.00
25	N 00°30'18" E	50.00	50.00
26	N 00°30'18" E	50.00	50.00
27	N 00°30'18" E	50.00	50.00
28	N 00°30'18" E	50.00	50.00
29	N 00°30'18" E	50.00	50.00
30	N 00°30'18" E	50.00	50.00
31	N 00°30'18" E	50.00	50.00
32	N 00°30'18" E	50.00	50.00
33	N 00°30'18" E	50.00	50.00
34	N 00°30'18" E	50.00	50.00
35	N 00°30'18" E	50.00	50.00
36	N 00°30'18" E	50.00	50.00
37	N 00°30'18" E	50.00	50.00
38	N 00°30'18" E	50.00	50.00
39	N 00°30'18" E	50.00	50.00
40	N 00°30'18" E	50.00	50.00
41	N 00°30'18" E	50.00	50.00
42	N 00°30'18" E	50.00	50.00
43	N 00°30'18" E	50.00	50.00
44	N 00°30'18" E	50.00	50.00
45	N 00°30'18" E	50.00	50.00
46	N 00°30'18" E	50.00	50.00
47	N 00°30'18" E	50.00	50.00
48	N 00°30'18" E	50.00	50.00
49	N 00°30'18" E	50.00	50.00
50	N 00°30'18" E	50.00	50.00
51	N 00°30'18" E	50.00	50.00
52	N 00°30'18" E	50.00	50.00
53	N 00°30'18" E	50.00	50.00
54	N 00°30'18" E	50.00	50.00
55	N 00°30'18" E	50.00	50.00
56	N 00°30'18" E	50.00	50.00
57	N 00°30'18" E	50.00	50.00
58	N 00°30'18" E	50.00	50.00
59	N 00°30'18" E	50.00	50.00
60	N 00°30'18" E	50.00	50.00
61	N 00°30'18" E	50.00	50.00
62	N 00°30'18" E	50.00	50.00
63	N 00°30'18" E	50.00	50.00
64	N 00°30'18" E	50.00	50.00
65	N 00°30'18" E	50.00	50.00
66	N 00°30'18" E	50.00	50.00
67	N 00°30'18" E	50.00	50.00
68	N 00°30'18" E	50.00	50.00
69	N 00°30'18" E	50.00	50.00
70	N 00°30'18" E	50.00	50.00
71	N 00°30'18" E	50.00	50.00
72	N 00°30'18" E	50.00	50.00
73	N 00°30'18" E	50.00	50.00
74	N 00°30'18" E	50.00	50.00
75	N 00°30'18" E	50.00	50.00
76	N 00°30'18" E	50.00	50.00
77	N 00°30'18" E	50.00	50.00
78	N 00°30'18" E	50.00	50.00
79	N 00°30'18" E	50.00	50.00
80	N 00°30'18" E	50.00	50.00
81	N 00°30'18" E	50.00	50.00
82	N 00°30'18" E	50.00	50.00
83	N 00°30'18" E	50.00	50.00
84	N 00°30'18" E	50.00	50.00
85	N 00°30'18" E	50.00	50.00
86	N 00°30'18" E	50.00	50.00
87	N 00°30'18" E	50.00	50.00
88	N 00°30'18" E	50.00	50.00
89	N 00°30'18" E	50.00	50.00
90	N 00°30'18" E	50.00	50.00
91	N 00°30'18" E	50.00	50.00
92	N 00°30'18" E	50.00	50.00
93	N 00°30'18" E	50.00	50.00
94	N 00°30'18" E	50.00	50.00
95	N 00°30'18" E	50.00	50.00
96	N 00°30'18" E	50.00	50.00
97	N 00°30'18" E	50.00	50.00
98	N 00°30'18" E	50.00	50.00
99	N 00°30'18" E	50.00	50.00
100	N 00°30'18" E	50.00	50.00
101	N 00°30'18" E	50.00	50.00
102	N 00°30'18" E	50.00	50.00
103	N 00°30'18" E	50.00	50.00
104	N 00°30'18" E	50.00	50.00
105	N 00°30'18" E	50.00	50.00
106	N 00°30'18" E	50.00	50.00
107	N 00°30'18" E	50.00	50.00
108	N 00°30'18" E	50.00	50.00
109	N 00°30'18" E	50.00	50.00
110	N 00°30'18" E	50.00	50.00
111	N 00°30'18" E	50.00	50.00
112	N 00°30'18" E	50.00	50.00
113	N 00°30'18" E	50.00	50.00
114	N 00°30'18" E	50.00	50.00

LINE DATA TABLE

NUMBER	DIRECTION	DISTANCE	BEARING	DIRECTION	DISTANCE
L1	N 29°27'37" E	278.71	L7	N 138°55'12" E	508.80
L2	N 29°27'37" E	8.00	L8	N 57°00'53" E	178.87
L3	N 83°28'27" W	283.37	L9	N 83°28'27" W	178.87
L4	N 02°30'18" E	248.87	L10	N 89°58'37" W	178.87
L5	N 02°30'18" E	178.87	L11	N 89°58'37" W	178.87
L6	N 02°30'18" E	178.87	L12	N 89°58'37" W	178.87
L7	N 02°30'18" E	178.87	L13	N 89°58'37" W	178.87
L8	N 02°30'18" E	178.87	L14	N 89°58'37" W	178.87
L9	N 02°30'18" E	178.87	L15	N 89°58'37" W	178.87
L10	N 02°30'18" E	178.87	L16	N 89°58'37" W	178.87
L11	N 02°30'18" E	178.87	L17	N 89°58'37" W	178.87
L12	N 02°30'18" E	178.87	L18	N 89°58'37" W	178.87
L13	N 02°30'18" E	178.87	L19	N 89°58'37" W	178.87
L14	N 02°30'18" E	178.87	L20	N 89°58'37" W	178.87
L15	N 02°30'18" E	178.87	L21	N 89°58'37" W	178.87
L16	N 02°30'18" E	178.87	L22	N 89°58'37" W	178.87
L17	N 02°30'18" E	178.87	L23	N 89°58'37" W	178.87
L18	N 02°30'18" E	178.87	L24	N 89°58'37" W	178.87
L19	N 02°30'18" E	178.87	L25	N 89°58'37" W	178.87
L20	N 02°30'18" E	178.87	L26	N 89°58'37" W	178.87
L21	N 02°30'18" E	178.87	L27	N 89°58'37" W	178.87
L22	N 02°30'18" E	178.87	L28	N 89°58'37" W	178.87
L23	N 02°30'18" E	178.87	L29	N 89°58'37" W	178.87
L24	N 02°30'18" E	178.87	L30	N 89°58'37" W	178.87
L25	N 02°30'18" E	178.87	L31	N 89°58'37" W	178.87
L26	N 02°30'18" E	178.87	L32	N 89°58'37" W	178.87
L27	N 02°30'18" E	178.87	L33	N 89°58'37" W	178.87
L28	N 02°30'18" E	178.87	L34	N 89°58'37" W	178.87
L29	N 02°30'18" E	178.87	L35	N 89°58'37" W	178.87
L30	N 02°30'18" E	178.87	L36	N 89°58'37" W	178.87
L31	N 02°30'18" E	178.87	L37	N 89°58'37" W	178.87
L32	N 02°30'18" E	178.87	L38	N 89°58'37" W	178.87
L33	N 02°30'18" E	178.87	L39	N 89°58'37" W	178.87
L34	N 02°30'18" E	178.87	L40	N 89°58'37" W	178.87
L35	N 02°30'18" E	178.87	L41	N 89°58'37" W	178.87
L36	N 02°30'18" E	178.87	L42	N 89°58'37" W	178.87
L37	N 02°30'18" E	178.87	L43	N 89°58'37" W	178.87
L38	N 02°30'18" E	178.87	L44	N 89°58'37" W	178.87
L39	N 02°30'18" E	178.87	L45	N 89°58'37" W	178.87
L40	N 02°30'18" E	178.87	L46	N 89°58'37" W	178.87
L41	N 02°30'18" E	178.87	L47	N 89°58'37" W	178.87
L42	N 02°30'18" E	178.87	L48	N 89°58'37" W	178.87
L43	N 02°30'18" E	178.87	L49	N 89°58'37" W	178.87
L44	N 02°30'18" E	178.87	L50	N 89°58'37" W	178.87
L45	N 02°30'18" E	178.87	L51	N 89°58'37" W	178.87
L46	N 02°30'18" E	178.87	L52	N 89°58'37" W	178.87
L47	N 02°30'18" E	178.87	L53	N 89°58'37" W	178.87
L48	N 02°30'18" E	178.87	L54	N 89°58'37" W	178.87
L49	N 02°30'18" E	178.87	L55	N 89°58'37" W	178.87
L50	N 02°30'18" E	178.87	L56	N 89°58'37" W	178.87
L51	N 02°30'18" E	178.87	L57	N 89°58'37" W	178.87
L52	N 02°30'18" E	178.87	L58	N 89°58'37" W	178.87
L53	N 02°30'18" E	178.87	L59	N 89°58'37" W	178.87
L54	N 02°30'18" E	178.87	L60	N 89°58'37" W	178.87
L55	N 02°30'18" E	178.87	L61	N 89°58'37" W	178.87
L56	N 02°30'18" E	178.87	L62	N 89°58'37" W	178.87
L57	N 02°30'18" E	178.87	L63	N 89°58'37" W	178.87
L58	N 02°30'18" E	178.87	L64	N 89°58'37" W	178.87
L59	N 02°30'18" E	178.87	L65	N 89°58'37" W	178.87
L60	N 02°30'18" E	178.87	L66	N 89°58'37" W	178.87
L61	N 02°30'18" E	178.87	L67	N 89°58'37" W	178.87
L62	N 02°30'18" E	178.87	L68	N 89°58'37" W	178.87
L63	N 02°30'18" E	178.87	L69	N 89°58'37" W	178.87
L64	N 02°30'18" E	178.87	L70	N 89°58'37" W	178.87
L65	N 02°30'18" E	178.87	L71	N 89°58'37" W	178.87
L66	N 02°30'18" E	178.87	L72	N 89°58'37" W	178.87
L67	N 02°30'18" E	178.87	L73	N 89°58'37" W	178.87
L68	N 02°30'18" E	178.87	L74	N 89°58'37" W	178.87
L69	N 02°30'18" E	178.87	L75	N 89°58'37" W	178.87
L70	N 02°30'18" E	178.87	L76	N 89°58'37" W	178.87
L71	N 02°30'18" E	178.87	L77	N 89°58'37" W	178.87
L72	N 02°30'18" E	178.87	L78	N 89°58'37" W	178.87
L73	N 02°30'18" E	178.87	L79	N 89°58'37" W	178.87
L74	N 02°30'18" E	178.87	L80	N 89°58'37" W	178.87
L75	N 02°30'18" E	178.87	L81	N 89°58'37" W	178.87
L76	N 02°30'18" E	178.87	L82	N 89°58'37" W	178.87
L77	N 02°30'18" E	178.87	L83	N 89°58'37" W	178.87
L78	N 02°30'18" E	178.87	L84	N 89°58'37" W	178.87
L79	N 02°30'18" E	178.87	L85	N 89°58'37" W	178.87
L80	N 02°30'18" E	178.87	L86	N 89°58'37" W	178.87
L81	N 02°30'18" E	178.87	L87	N 89°58'37" W	178.87
L82	N 02°30'18" E	178.87	L88	N 89°58'37	