

ERRATA

For Item

#2

Friday May 14, 2021

PLANNING COMMISSION HEARING

Distributed 5/14/21

ERRATA No.1
PLANNING COMMISSION HEARING

May 14, 2021
Item No.2

SUBJECT: GENERAL PLAN UPDATE: HOUSING, SAFETY, AND ENVIRONMENTAL JUSTICE ELEMENT AND ASSOCIATED HOUSING ELEMENT PROGRAMS; 20-002; 19-GPA-001; AND 17-GPA-004

This errata is submitted to the Planning Commission to make the following revision to attachment E, which includes State requested revisions to the Draft Housing Element:

On May 11, 2021, the County received a letter from the California Department of Housing and Community Development requesting revisions to the Draft Housing Element. As a result, the Draft Housing Element includes revisions for the Planning Commission's recommendation summarized as Appendix C: Housing Resources, Appendix G: Maps of RHNA Sites Inventory, and Appendix H: Table of RHNA Sites Inventory and as shown in the following attachment revisions.

Appendix C: Housing Resources



6TH CYCLE HOUSING ELEMENT UPDATE APPENDIX C ■ HOUSING RESOURCES

Table C-12: Adequate Residential Capacity by Income

	Very Low (≥ 24 du/ac)	Low (≥ 24 du/ac)	Moderate (10.9- 20.45 du/ac)	Above Moderate (≤ 10.9 du/ac)	Total
RHNA (2021-2029)	1,834	992	1,165	2,709	6,700
ADUs	270	216	657	657	1,800
Building Permits Issued	12	27	169	193	401
<u>Discretionary Projects Approved (2021)</u>				<u>137</u>	<u>137</u>
<u>Discretionary Projects in Process</u>				<u>177</u>	<u>177</u>
Site Inventory					
Identified Units	<u>2,290</u> 2,260	<u>479</u>	<u>2,086</u> 1,610		<u>4,376</u> 4,349
Otay 250 Specific Plan	663			1,547	2,210
TOTAL UNITS	3,235 05	243 722	2,912 2,436	2,711	9,101 12,019 760
Surplus (deficit)*	<u>1,401</u> 1,371	<u>(749)</u> (270)	<u>1,747</u> 271	<u>2</u> (312)	<u>2,401</u> <u>2,374</u> 2,060
*Surplus units will be used to satisfy any deficit in a higher income category.					

NON-VACANT SITES

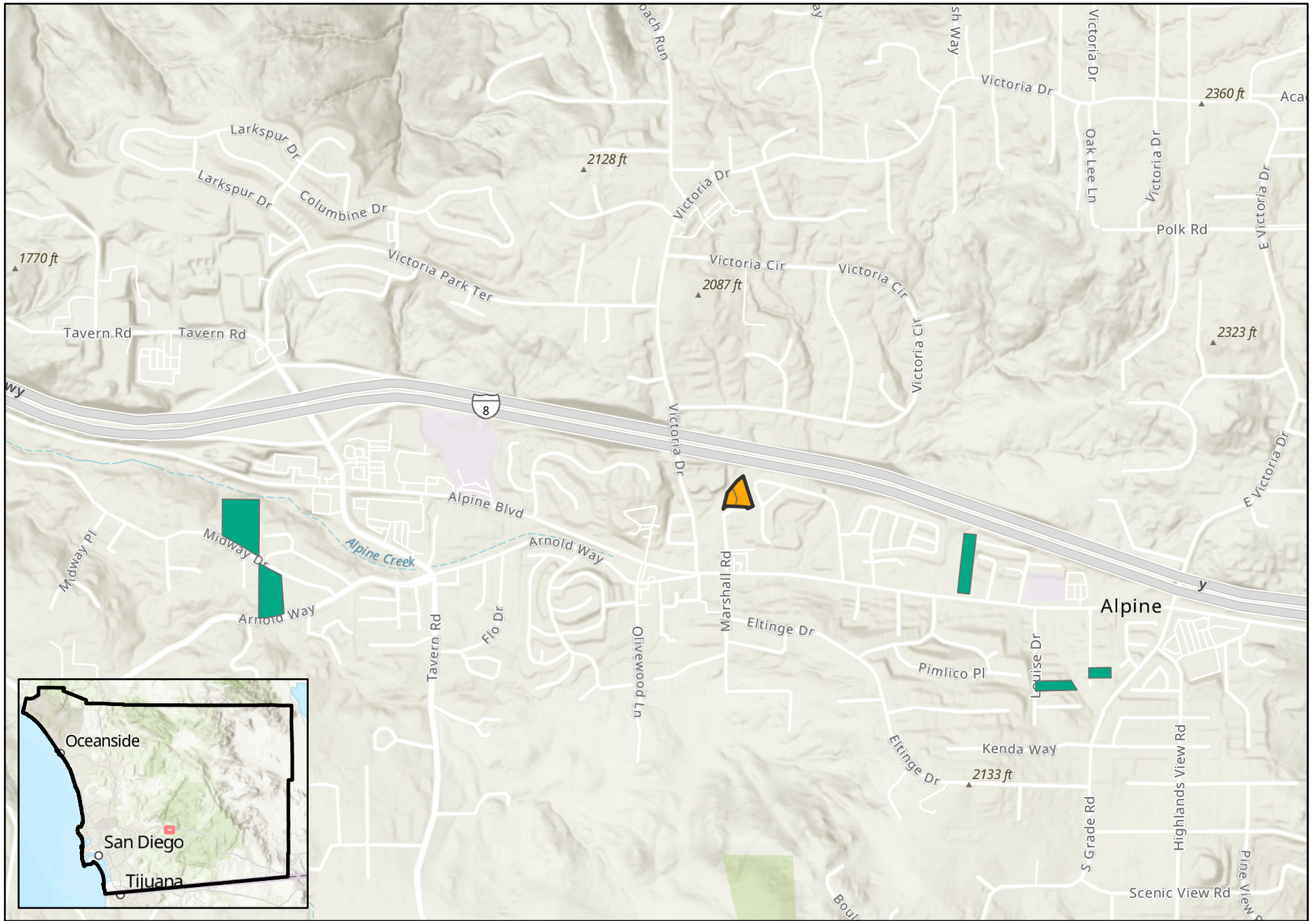
The County has adequate sites to meet more than 50 percent of its lower-income RHNA through ADUs, building permit credits, or on non-vacant sites. The County accommodates a total of 1,425~~1,574~~ units of lower-income capacity through ADUs, credits, and vacant sites, which exceeds the 50 percent of the 2,826 lower-income unit allocation ($1,834 + 992 = 2,826$; $2,826/2 = 1,413$ units).

Table C-13: Non-Vacant Sites Toward the RHNA

Lower Income RHNA Requirement	2,826
50% of Lower Income RHNA	1,413
Otay 250 Specific Plan (Vacant)	663
ADUs	486
Building Permits	20
Other Vacant Sites in Lower-Income Inventory	<u>256</u> 405
Total Lower Income Accommodated through ADUS, Credits, and Vacant Sites	<u>1,425</u> 1,574

Non-vacant sites are an important source of potential development to meet the lower-income RHNA obligations. The inventory identifies capacity for 3,342~~8~~ units on sites available for v

Appendix G: Maps of RHNA Sites Inventory

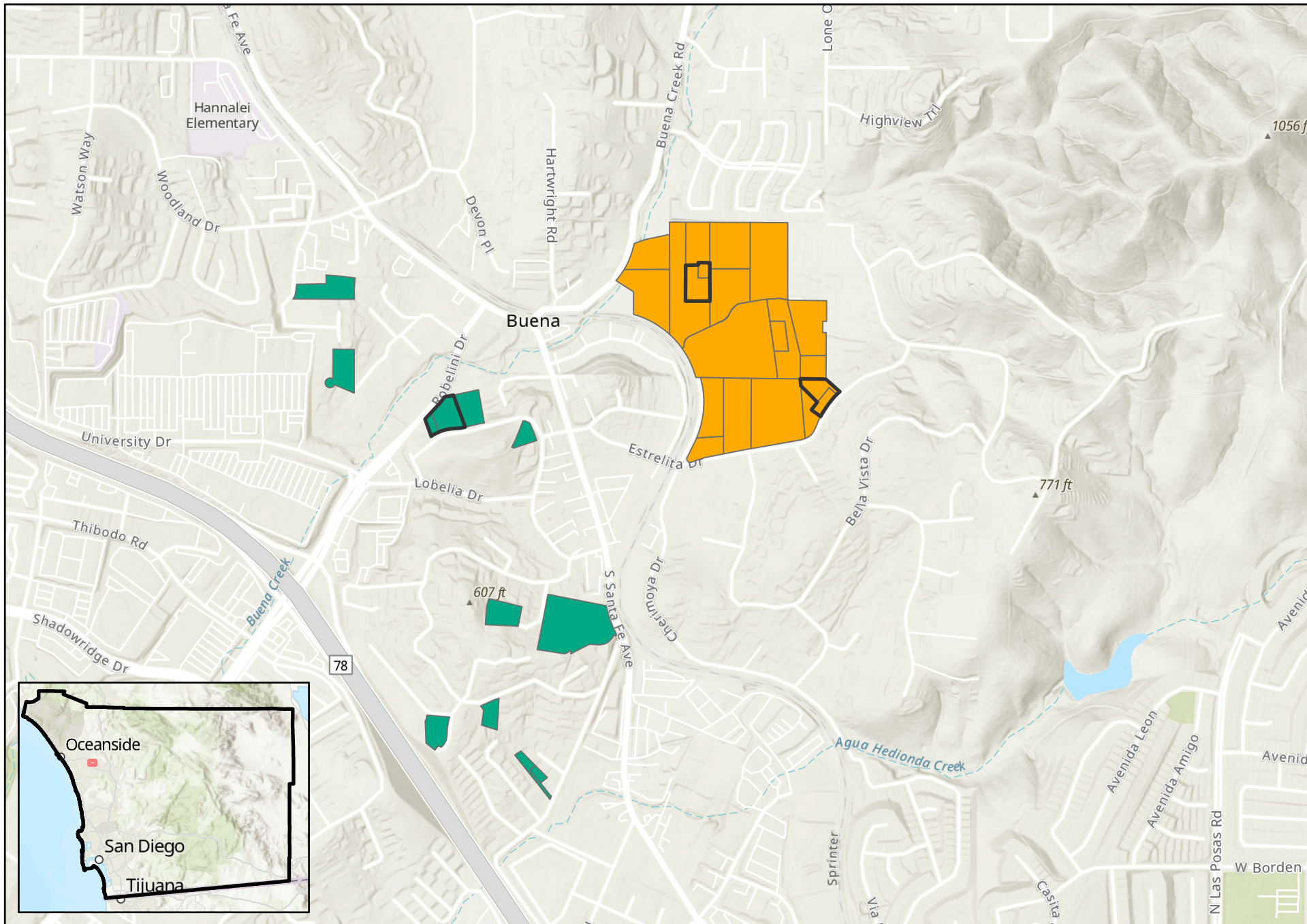


COUNTY OF SAN DIEGO, HOUSING ELEMENT

Alpine

Source: SanGIS, 2020; County of San Diego, 2021

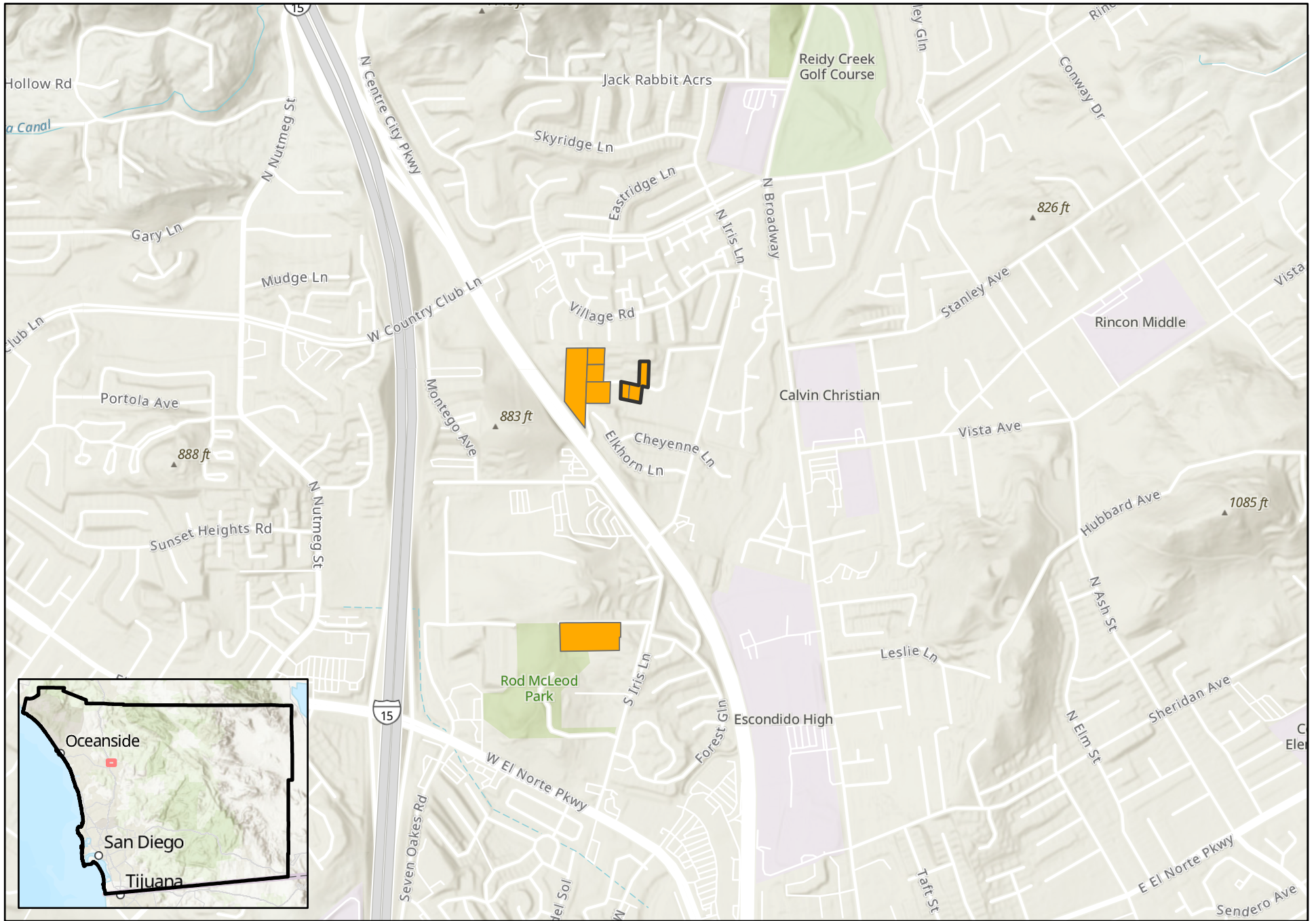
RHNA Sites Inventory



COUNTY OF SAN DIEGO, HOUSING ELEMENT

Buena Creek

RHNA Sites Inventory

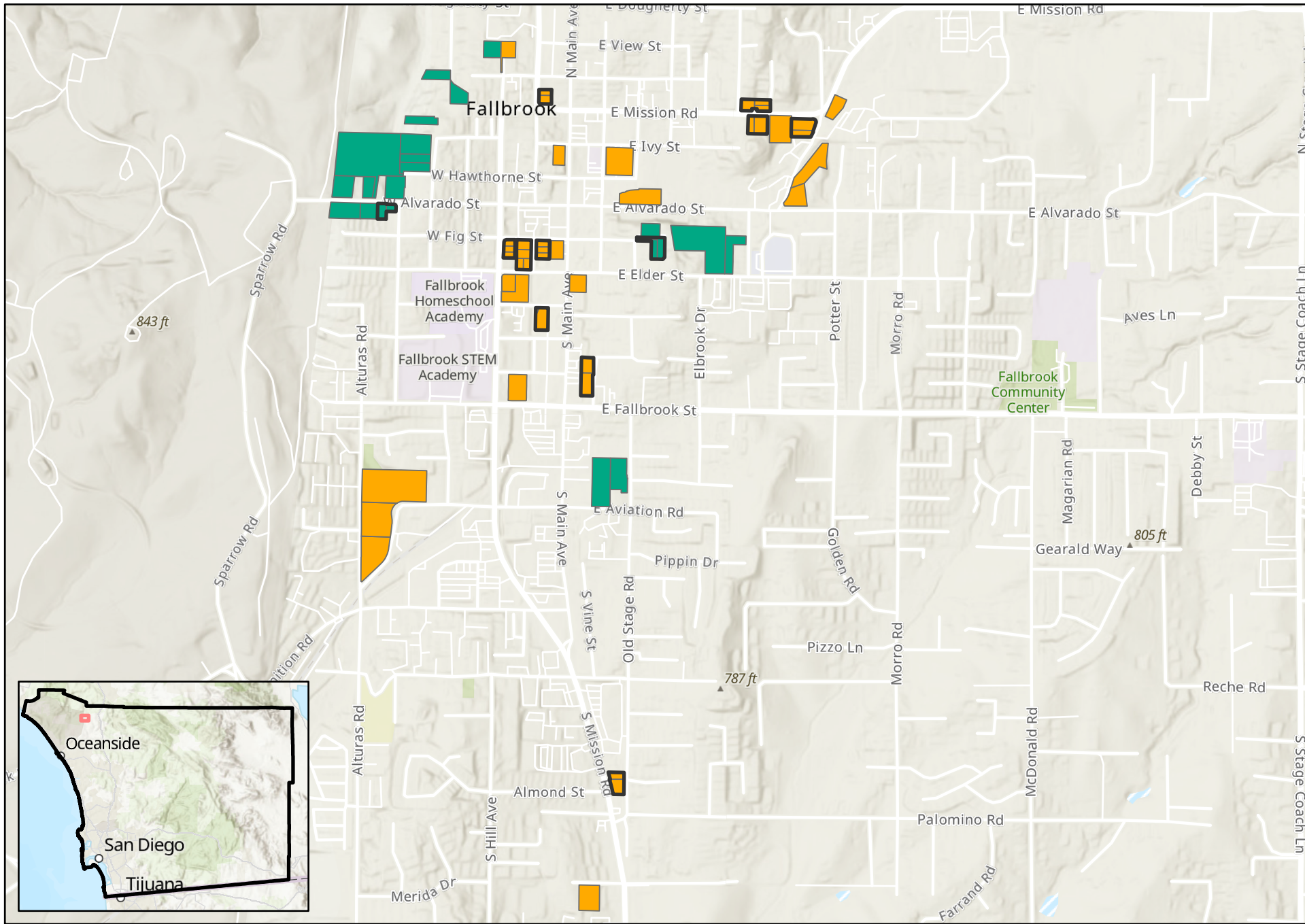


COUNTY OF SAN DIEGO, HOUSING ELEMENT

Escondido Islands

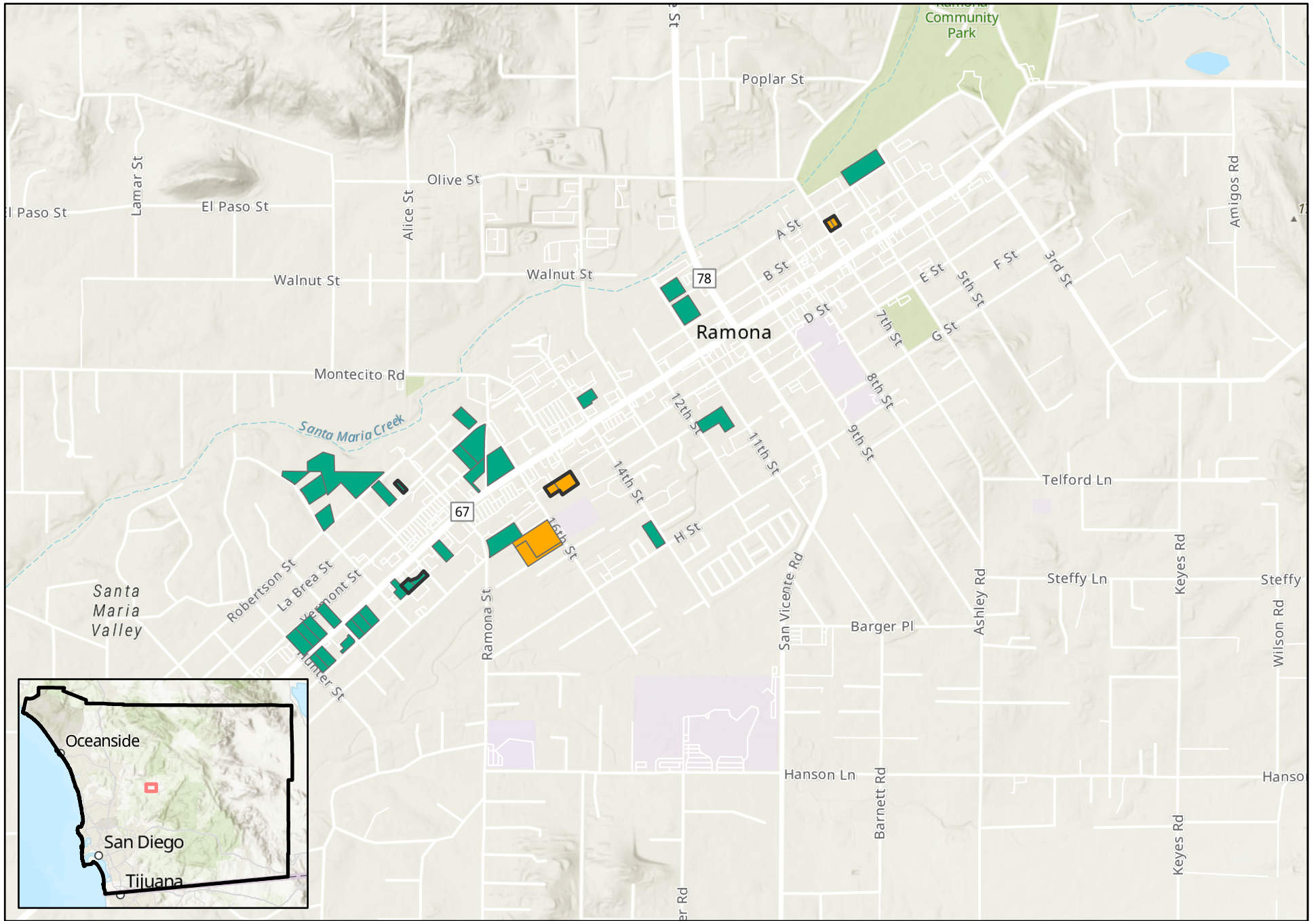
Source: SanGIS, 2020; County of San Diego, 2021

RHNA Sites Inventory



COUNTY OF SAN DIEGO, HOUSING ELEMENT

Fallbrook

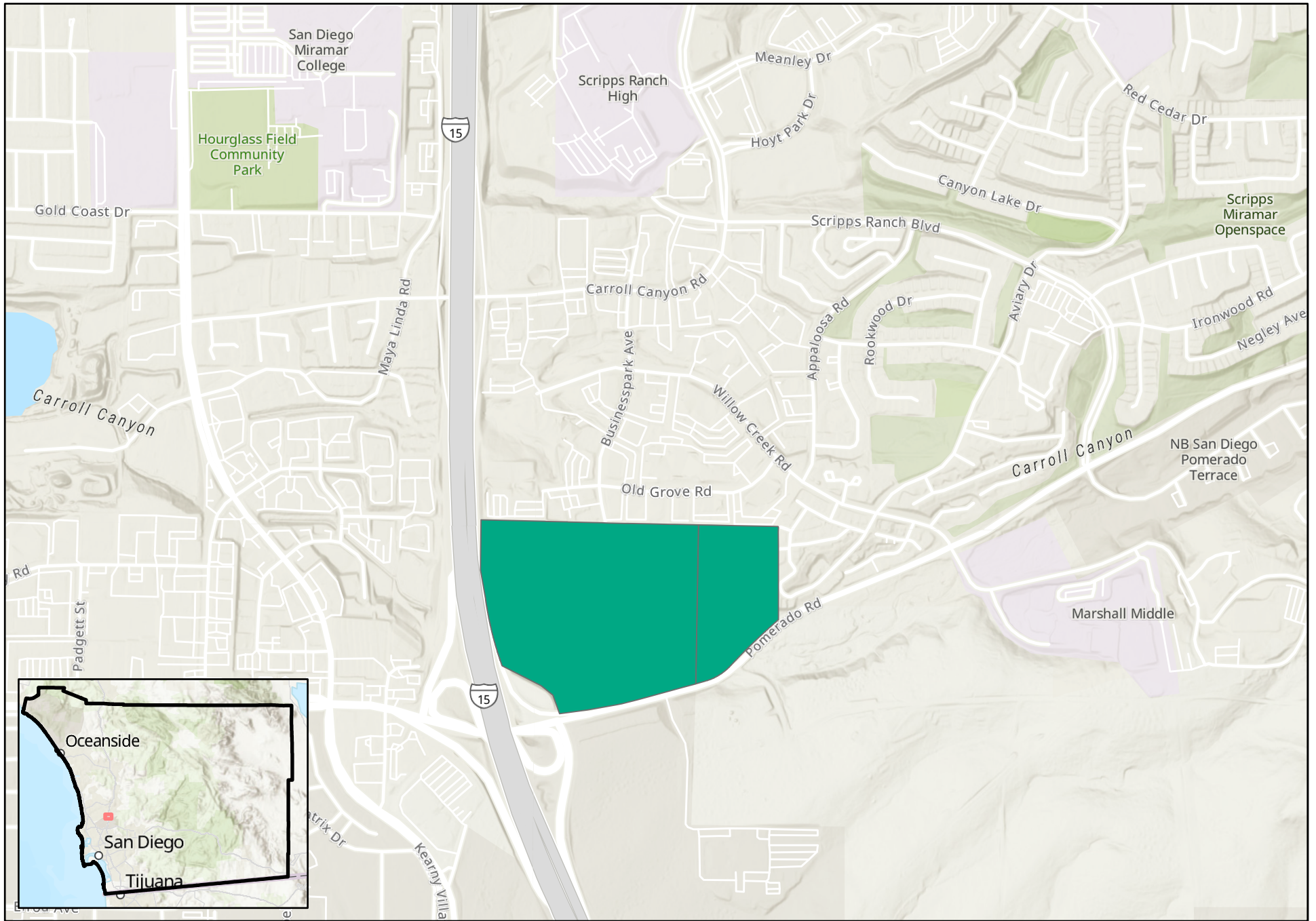


COUNTY OF SAN DIEGO, HOUSING ELEMENT

Ramona

Source: SanGIS, 2020; County of San Diego, 2021

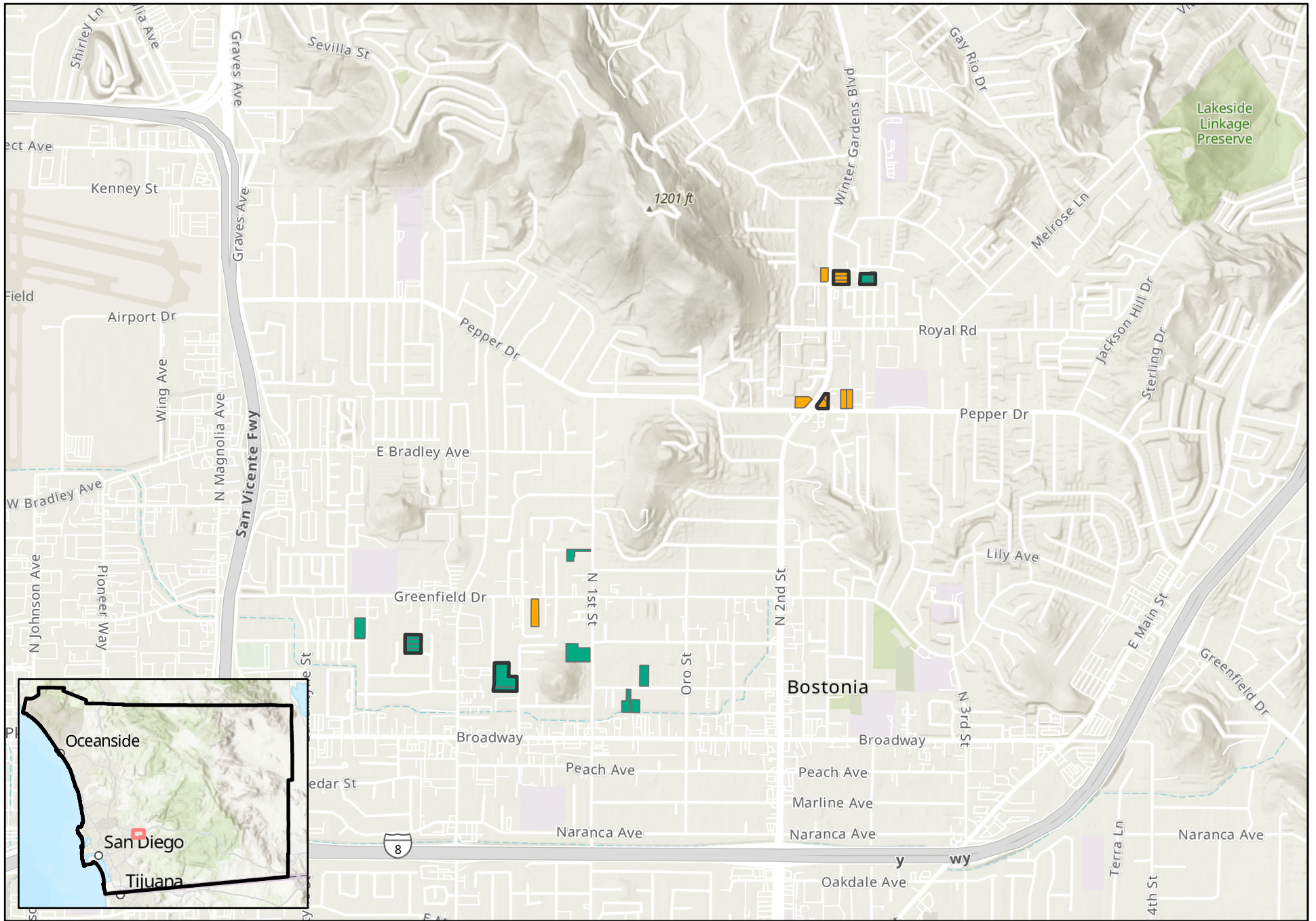
RHNA Sites Inventory



COUNTY OF SAN DIEGO, HOUSING ELEMENT

Miramar

RHNA Sites Inventory

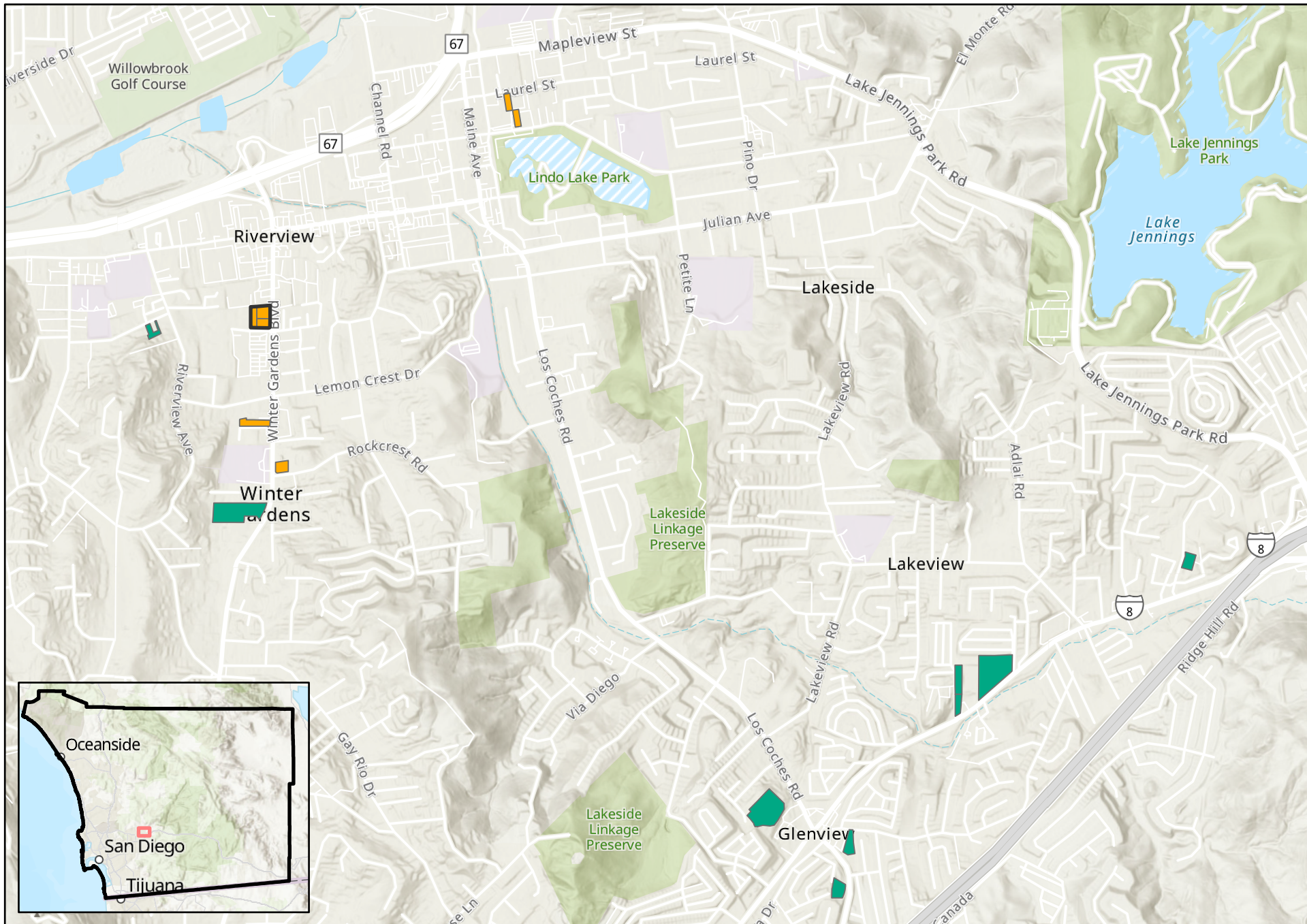


COUNTY OF SAN DIEGO, HOUSING ELEMENT

Bostonia

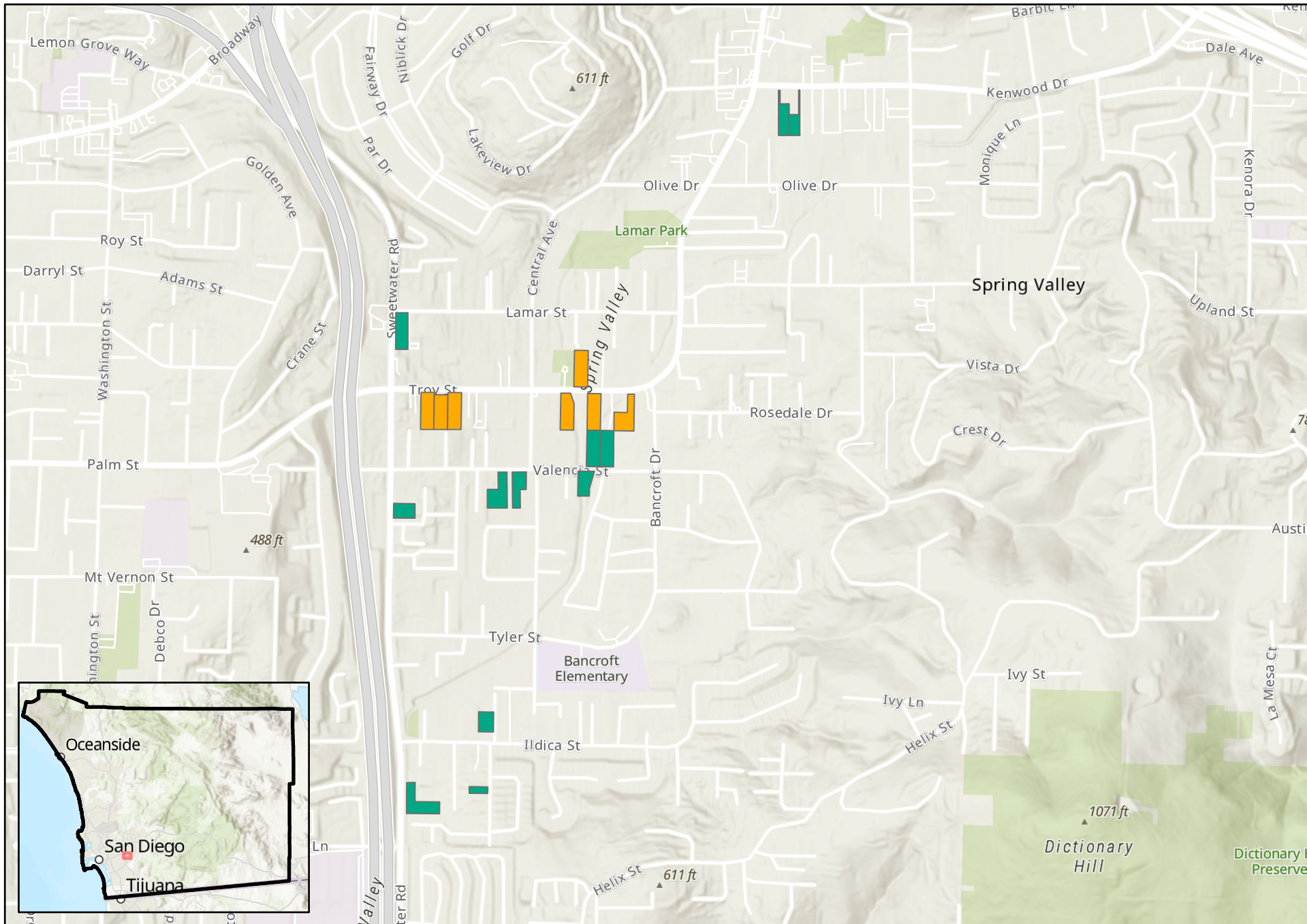
Source: SanGIS, 2020; County of San Diego, 2021

RHNA Sites Inventory



COUNTY OF SAN DIEGO, HOUSING ELEMENT

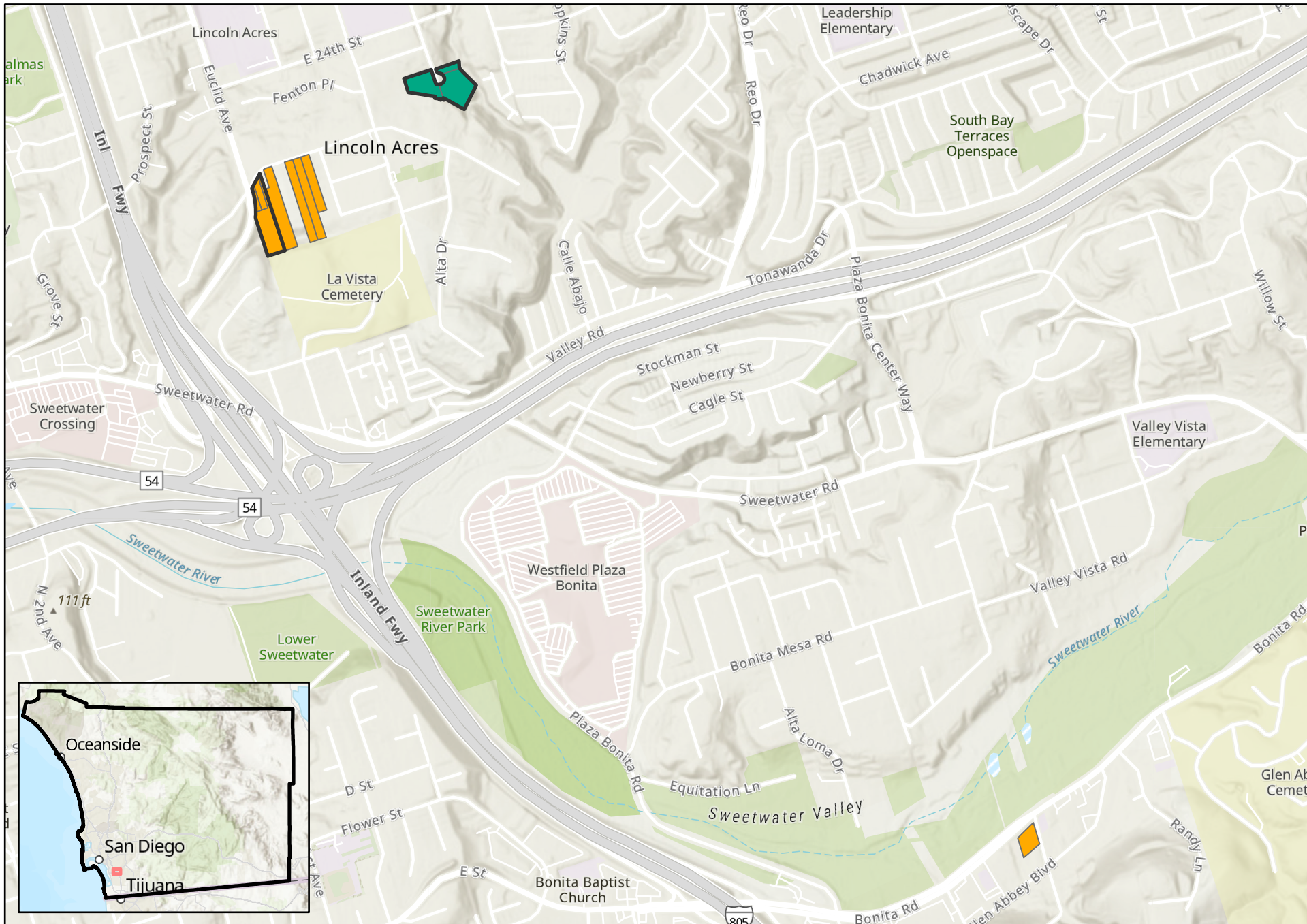
Lakeside



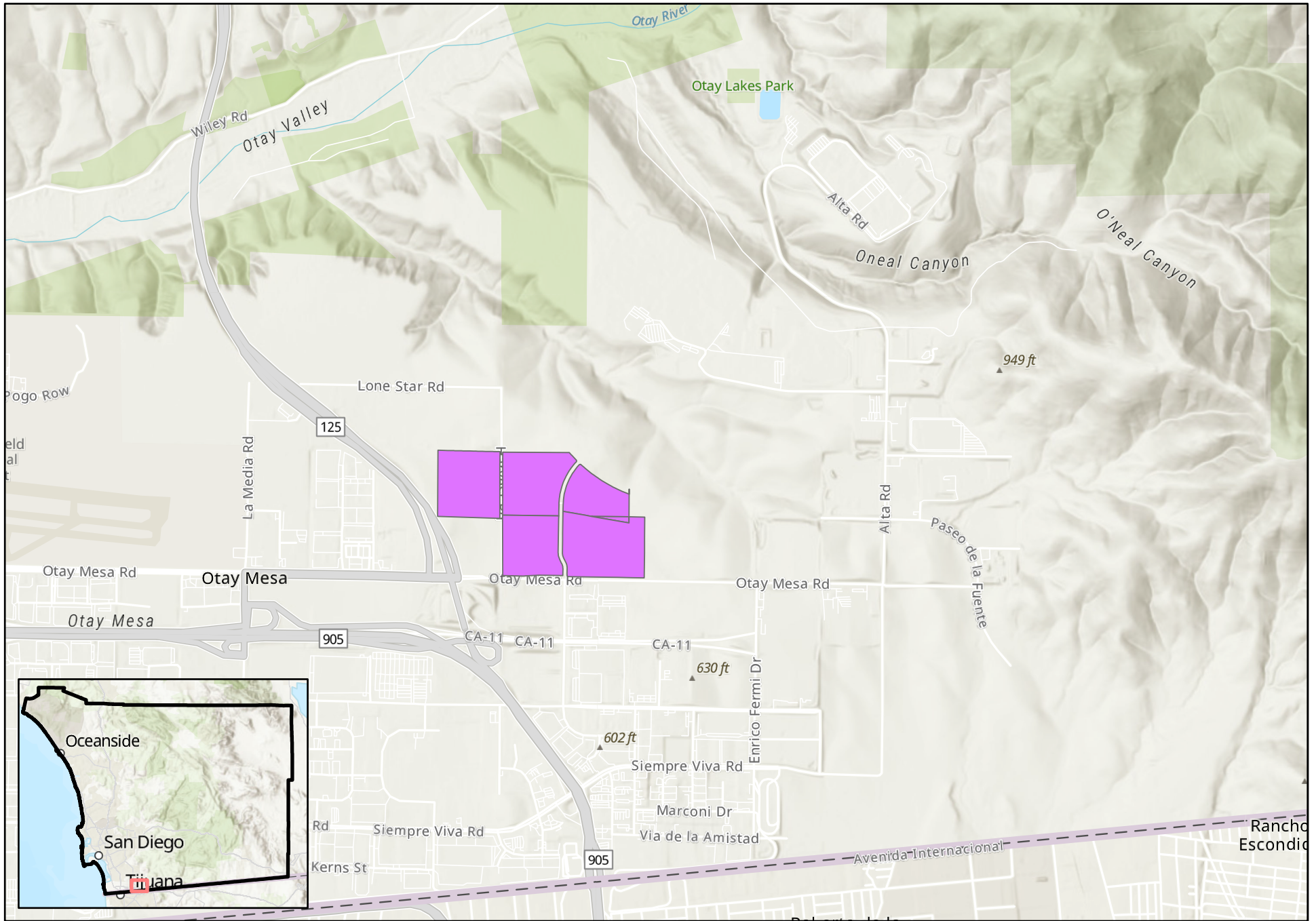
COUNTY OF SAN DIEGO, HOUSING ELEMENT

Spring Valley

RHNA Sites Inventory



COUNTY OF SAN DIEGO, HOUSING ELEMENT
Lincoln Acres/Sweetwater



COUNTY OF SAN DIEGO, HOUSING ELEMENT

Otay 250

Source: SanGIS, 2020; County of San Diego, 2021

RHNA Sites Inventory

Appendix H: Table of RHNA Sites Inventory



APN	Site Number	Consolidated Site ID	Site Address	General Plan Land Use	Zone	Income Category	Area (Acres)	Maximum Density	Calibration Factor	Existing Units	New Unit Potential	Existing Land Use	Vacant/ Non-Vacant	Assembly Bill 1397	Fifth Cycle (2017 Update)	Fifth Cycle Housing Element	Fourth Cycle Housing Element	Community Planning Area
4031910700	AL-1		1610 MIDWAY DR	VILLAGE RESIDENTIAL (VR-15)	RV	Moderate	3.95	15	0.7	0	35	Vacant and Undeveloped Land	Vacant		Yes	Yes		Alpine
4033101000	AL-2		2612 ALPINE BLVD	VILLAGE RESIDENTIAL (VR-15)	RV	Moderate	1.67	15	0.7	1	8	Single Family Detached	Non-Vacant					Alpine
4033312600	AL-3		1471 LOUISE DR	VILLAGE RESIDENTIAL (VR-15)	RS	Moderate	0.88	15	0.7	1	8	Single Family Detached	Non-Vacant					Alpine
4033700400	AL-4		1671 MIDWAY DR	VILLAGE RESIDENTIAL (VR-10.9)	RS	Moderate	2.58	10.9	0.7	0	13	Vacant and Undeveloped Land	Vacant		Yes	Yes		Alpine
4040320500	AL-5		1481 ROCK TERRACE RD	VILLAGE RESIDENTIAL (VR-15)	RS	Moderate	0.52	15	0.7	1	5	Single Family Detached	Non-Vacant					Alpine
4032623300	AL-6	S	1238 MARSHALL RD	VILLAGE RESIDENTIAL (VR-24)	RV	Lower	0.38	24	0.7	1	5	Single Family Detached	Non-Vacant					Alpine
4032623200	AL-6	S	1212 MARSHALL RD	VILLAGE RESIDENTIAL (VR-24)	RV	Lower	0.89	24	0.7	1	14	Single Family Detached	Non-Vacant					Alpine
1260606100	B-1		5768 CAMINO DEL REY	VILLAGE RESIDENTIAL (VR-15)	RU	Moderate	13.22	15	0.7	0	139	Vacant and Undeveloped Land	Vacant		Yes	Yes		Bonsall
3630600200	CI-1		9998 POMERADO RD	VILLAGE RESIDENTIAL (VR-20)	RU	Moderate	60.22	20	0.7	1	354	Other Recreation - High	Non-Vacant	Yes	Yes	Yes	Yes	County Islands
3630710100	CI-2		10080 POMERADO RD	VILLAGE RESIDENTIAL (VR-20)	RU	Moderate	17.79	20	0.7	6	188	Other Recreation - High	Non-Vacant	Yes	Yes	Yes	Yes	County Islands
5640400500	CI-3		2593 EUCLID AV	VILLAGE RESIDENTIAL (VR-24)	RU	Lower	2.09	24	0.7	1	34	Spaced Rural Residential	Non-Vacant	Yes	Yes	Yes	Yes	County Islands
5640400800	CI-4		2700 GWYNNE AV	VILLAGE RESIDENTIAL (VR-24)	RU	Lower	1.43	24	0.7	1	23	Spaced Rural Residential	Non-Vacant	Yes	Yes	Yes	Yes	County Islands
5640400900	CI-5		2702 GWYNNE AV	VILLAGE RESIDENTIAL (VR-24)	RU	Lower	1.43	24	0.7	2	22	Single Family Multiple-Units	Non-Vacant	Yes	Yes	Yes	Yes	County Islands
5640401400	CI-6		2672 GWYNNE AV	VILLAGE RESIDENTIAL (VR-24)	RU	Lower	1.02	24	0.7	1	16	Single Family Detached	Non-Vacant	Yes	Yes	Yes	Yes	County Islands
5640722900	CI-7	AA	2498 VAN NESS AV	VILLAGE RESIDENTIAL (VR-15)	RU	Moderate	1.35	15	0.7	1	12	Light Industry - General	Non-Vacant					County Islands
5640801500	CI-7	AA	2481 VAN NESS AV	VILLAGE RESIDENTIAL (VR-15)	RU	Moderate	0.31	15	0.7	0	3	Light Industry - General	Non-Vacant					County Islands
5640801400	CI-7	AA	2499 VAN NESS AV	VILLAGE RESIDENTIAL (VR-15)	RU	Moderate	1.86	15	0.7	1	19	Light Industry - General	Non-Vacant					County Islands
5640402300	CI-8	Z	2579 EUCLID AV	VILLAGE RESIDENTIAL (VR-24)	RU	Lower	0.19	24	0.7	0	3	Vacant and Undeveloped Land	Vacant					County Islands
5640402100	CI-8	Z	2611 EUCLID AV	VILLAGE RESIDENTIAL (VR-24)	RU	Lower	1.82	24	0.7	1	30	Single Family Detached	Non-Vacant	Yes	Yes	Yes	Yes	County Islands
5640400200	CI-8	Z	2573 EUCLID AV	VILLAGE RESIDENTIAL (VR-24)	RU	Lower	0.39	24	0.7	1	6	Single Family Detached	Non-Vacant	Yes	Yes	Yes	Yes	County Islands
1031011000	FB-1		512 ROSVALL DR	VILLAGE RESIDENTIAL (VR-20)	RU	Low Moderate	0.57	20	0.7	1	7	Single Family Detached	Non-Vacant					Fallbrook
1032461700	FB-10		223 S BRANDON RD	VILLAGE RESIDENTIAL (VR-15)	RU	Moderate	0.92	15	0.7	0	10	Vacant and Undeveloped Land	Vacant	No-Moderate	Yes	Yes	Yes	Fallbrook
1032462800	FB-11		504 E ELDER ST	VILLAGE RESIDENTIAL (VR-15)	RU	Moderate	3.88	15	0.7	0	41	Vacant and Undeveloped Land	Vacant	No-Moderate	Yes	Yes	Yes	Fallbrook
1032630600	FB-12		224 N MAIN AVE	VILLAGE CORE MIXED USE	FBV1	Lower	0.51	24	0.6	1	6	Arterial Commercial	Non-Vacant					Fallbrook
1033002500	FB-13		744 W ALVARADO ST	VILLAGE RESIDENTIAL (VR-20)	RU	Low Moderate	1.06	20	0.7	0	15	Vacant and Undeveloped Land	Vacant					Fallbrook
1033005700	FB-14		650 W ALVARADO ST	VILLAGE RESIDENTIAL (VR-20)	RU	Low Moderate	0.59	20	0.7	0	8	Vacant and Undeveloped Land	Vacant					Fallbrook
1033100100	FB-15		198 YOKUM CT	VILLAGE RESIDENTIAL (VR-20)	RU	Low Moderate	6.26	20	0.7	1	86	Spaced Rural Residential	Non-Vacant	Yes	Yes	Yes	Yes	Fallbrook
1033100200	FB-16		753 W ALVARADO ST	VILLAGE RESIDENTIAL (VR-20)	RU	Low Moderate	0.97	20	0.7	1	13	Spaced Rural Residential	Non-Vacant					Fallbrook



APN	Site Number	Consolidated Site ID	Site Address	General Plan Land Use	Zone	Income Category	Area (Acres)	Maximum Density	Calibration Factor	Existing Units	New Unit Potential	Existing Land Use	Vacant/ Non-Vacant	Assembly Bill 1397	Fifth Cycle (2017 Update)	Fifth Cycle Housing Element	Fourth Cycle Housing Element	Community Planning Area
1033100400	FB-17		150 YOKUM CT	VILLAGE RESIDENTIAL (VR-20)	RU	Low Moderate	0.51	20	0.7	1	6	Spaced Rural Residential	Non-Vacant					Fallbrook
1033100600	FB-18		605 W ALVARADO ST	VILLAGE RESIDENTIAL (VR-20)	RU	Low Moderate	0.95	20	0.7	0	13	Vacant and Undeveloped Land	Vacant					Fallbrook
1033100700	FB-19		284 N WISCONSIN AV	VILLAGE RESIDENTIAL (VR-20)	RU	Low Moderate	1.34	20	0.7	1	18	Single Family Detached	Non-Vacant	Yes	Yes	Yes	Yes	Fallbrook
1031013300	FB-2		528 N HILL AV	VILLAGE RESIDENTIAL (VR-15)	RU	Moderate	0.62	15	0.7	1	6	Single Family Detached	Non-Vacant					Fallbrook
1033100800	FB-20		561 W HAWTHORNE ST	VILLAGE RESIDENTIAL (VR-20)	RU	Low Moderate	0.57	20	0.7	1	7	Single Family Detached	Non-Vacant					Fallbrook
1033100900	FB-21		563 W HAWTHORNE ST	VILLAGE RESIDENTIAL (VR-20)	RU	Low Moderate	0.60	20	0.7	1	7	Single Family Detached	Non-Vacant					Fallbrook
1040510200	FB-22		241 W COLLEGE ST	VILLAGE CORE MIXED USE	FBV3	Lower	1.13	24	0.7	0	19	Light Industry - General	Non-Vacant					Fallbrook
1040510300	FB-23		332 S MISSION RD	VILLAGE CORE MIXED USE	FBV3	Lower	0.51	24	0.7	1	8	Light Industry - General	Non-Vacant	Yes	Yes	Yes	Yes	Fallbrook
1040552200	FB-24		133 E ELDER ST	VILLAGE CORE MIXED USE	FBV4	Lower	0.63	24	0.6	1	8	Service Station	Non-Vacant					Fallbrook
1040641000	FB-25		647 S PICO AV	VILLAGE CORE MIXED USE	FBV3	Lower	1.05	24	0.7	1	17	Light Industry - General	Non-Vacant					Fallbrook
1041000800	FB-26		1070 ALTURAS RD	VILLAGE RESIDENTIAL (VR-24)	RU	Lower	2.30	24	0.7	1	38	Spaced Rural Residential	Non-Vacant	Yes	Yes	Yes	Yes	Fallbrook
1041000900	FB-27		483 W AVIATION RD	VILLAGE RESIDENTIAL (VR-24)	RU	Lower	4.61	24	0.7	0	77	Vacant and Undeveloped Land	Vacant	Yes	Yes	Yes	Yes	Fallbrook
1041321400	FB-28		212 E AVIATION RD	VILLAGE RESIDENTIAL (VR-15)	RV	Moderate	1.95	15	0.7	2	18	Single Family Multiple-Units	Non-Vacant	No-Moderate	Yes	Yes	Yes	Fallbrook
1041324900	FB-29		879 OLD STAGE RD	VILLAGE RESIDENTIAL (VR-15)	RV	Moderate	1.21	15	0.7	0	13	Vacant and Undeveloped Land	Vacant	No-Moderate	Yes	Yes	Yes	Fallbrook
1031015100	FB-3		487 W IVY ST	VILLAGE RESIDENTIAL (VR-20)	RU	Low Moderate	0.58	20	0.7	0	8	Vacant and Undeveloped Land	Vacant					Fallbrook
1041610100	FB-30		1130 ALTURAS RD	VILLAGE RESIDENTIAL (VR-24)	RU	Lower	1.98	24	0.7	0	33	Vacant and Undeveloped Land	Vacant	Yes	Yes	Yes	Yes	Fallbrook
1055401900	FB-31		325 LYNDEN LN	VILLAGE CORE MIXED USE	FBV3	Lower	1.30	24	0.7	1	21	Other Retail Trade and Strip Commercial	Non-Vacant					Fallbrook
1055407600	FB-32		813 E MISSION RD	VILLAGE CORE MIXED USE	FBV3	Lower	0.60	24	0.7	1	9	Other Retail Trade and Strip Commercial	Non-Vacant					Fallbrook
1058100400	FB-33		149 N BRANDON RD	VILLAGE CORE MIXED USE	FBV3	Lower	0.82	24	0.7	0	14	Vacant and Undeveloped Land	Vacant	Yes	Yes	Yes	Yes	Fallbrook
1058100600	FB-34		243 N BRANDON RD	VILLAGE CORE MIXED USE	FBV3	Lower	1.35	24	0.7	0	23	Vacant and Undeveloped Land	Vacant	Yes	Yes	Yes	Yes	Fallbrook
1031820900	FB-35	A	582 E MISSION RD	VILLAGE CORE MIXED USE	FBV3	Lower	0.32	24	0.7	0	5	Vacant and Undeveloped Land	Vacant		Yes	Yes		Fallbrook
1031820500	FB-35	A	666 E MISSION RD	VILLAGE CORE MIXED USE	FBV3	Lower	0.19	24	0.7	0	3	Vacant and Undeveloped Land	Vacant		Yes	Yes		Fallbrook
1031820600	FB-35	A	438 LYNDEN LN	VILLAGE CORE MIXED USE	FBV3	Lower	0.20	24	0.7	0	3	Vacant and Undeveloped Land	Vacant		Yes	Yes		Fallbrook
1040530900	FB-36	AB	124 W COLLEGE ST	VILLAGE CORE MIXED USE	FBV3	Lower	0.58	24	0.7	1	9	Other Retail Trade and Strip Commercial	Non-Vacant					Fallbrook
1040530100	FB-36	AB	416 S PICO AV	VILLAGE CORE MIXED USE	FBV3	Lower	0.03	24	0.7	0	1	Other Retail Trade and Strip Commercial	Non-Vacant					Fallbrook
1031830600	FB-37	B	342 LYNDEN LN	VILLAGE CORE MIXED USE	FBV3	Lower	0.52	24	0.7	1	8	Other Retail Trade and Strip Commercial	Non-Vacant					Fallbrook



APN	Site Number	Consolidated Site ID	Site Address	General Plan Land Use	Zone	Income Category	Area (Acres)	Maximum Density	Calibration Factor	Existing Units	New Unit Potential	Existing Land Use	Vacant/ Non-Vacant	Assembly Bill 1397	Fifth Cycle (2017 Update)	Fifth Cycle Housing Element	Fourth Cycle Housing Element	Community Planning Area
1031831000	FB-37	B	605 E MISSION RD	VILLAGE CORE MIXED USE	FBV3	Lower	0.24	24	0.7	0	4	Surface Parking Lot	Non-Vacant					Fallbrook
1055402100	FB-38	C	290 N BRANDON RD	VILLAGE CORE MIXED USE	FBV3	Lower	0.31	24	0.7	0	5	Other Retail Trade and Strip Commercial	Non-Vacant					Fallbrook
1055402200	FB-38	C	763 E MISSION RD	VILLAGE CORE MIXED USE	FBV3	Lower	0.60	24	0.7	1	9	Other Retail Trade and Strip Commercial	Non-Vacant					Fallbrook
1031320300	FB-39	D	421 N PICO AVE	VILLAGE CORE MIXED USE	FBV2	Lower	0.16	24	0.6	1	1	Parking Lot - Surface	Non-Vacant					Fallbrook
1031321000	FB-39	D	143 W MISSION RD	VILLAGE CORE MIXED USE	FBV2	Lower	0.24	24	0.6	0	3	Parking Lot - Surface	Non-Vacant					Fallbrook
1031015500	FB-4		461 ROSVALL DR	VILLAGE RESIDENTIAL (VR-20)	RU	Low Moderate	0.67	20	0.7	0	9	Vacant and Undeveloped Land	Vacant					Fallbrook
1033005300	FB-40	E	608 W ALVARADO ST	VILLAGE RESIDENTIAL (VR-20)	RU	Low Moderate	0.15	20	0.7	0	2	Vacant and Undeveloped Land	Vacant					Fallbrook
1033005800	FB-40	E	620 W ALVARADO ST	VILLAGE RESIDENTIAL (VR-20)	RU	Low Moderate	0.30	20	0.7	0	4	Vacant and Undeveloped Land	Vacant					Fallbrook
1032221100	FB-41	F	248 W FIG ST	VILLAGE CORE MIXED USE	FBV3	Lower	0.15	24	0.7	0	3	Vacant and Undeveloped Land	Vacant		Yes	Yes		Fallbrook
1032221400	FB-41	F	218 S MISSION RD	VILLAGE CORE MIXED USE	FBV3	Lower	0.15	24	0.7	0	2	Vacant and Undeveloped Land	Vacant		Yes	Yes		Fallbrook
1032221600	FB-41	F	250 S MISSION RD	VILLAGE CORE MIXED USE	FBV3	Lower	0.15	24	0.7	0	3	Vacant and Undeveloped Land	Vacant		Yes	Yes		Fallbrook
1032220700	FB-42	G	237 S PICO AVE	VILLAGE CORE MIXED USE	FBV3	Lower	0.28	24	0.7	0	5	Surface Parking Lot	Non-Vacant					Fallbrook
1032221000	FB-42	G	210 W FIG ST	VILLAGE CORE MIXED USE	FBV3	Lower	0.32	24	0.7	1	4	Arterial Commercial	Non-Vacant					Fallbrook
1032222400	FB-42	G	277 S PICO AV	VILLAGE CORE MIXED USE	FBV3	Lower	0.19	24	0.7	0	3	Automobile Dealership	Non-Vacant					Fallbrook
1032222300	FB-42	G	213 W ELDER ST	VILLAGE CORE MIXED USE	FBV3	Lower	0.18	24	0.7	1	2	Single Family Detached	Non-Vacant					Fallbrook
1032230300	FB-43	H	263 S PICO AVE	VILLAGE CORE MIXED USE	FBV3	Lower	0.18	24	0.7	0	3	Single Family Detached	Non-Vacant					Fallbrook
1032230200	FB-43	H	214 S PICO AVE	VILLAGE CORE MIXED USE	FBV3	Lower	0.17	24	0.7	2	1	Single Family Multiple-Units	Non-Vacant					Fallbrook
1032230100	FB-43	H	154 W FIG ST	VILLAGE CORE MIXED USE	FBV3	Lower	0.19	24	0.7	0	3	Vacant and Undeveloped Land	Vacant					Fallbrook
1032430700	FB-44	I	210 S ORANGE AV	VILLAGE RESIDENTIAL (VR-15)	RU	Moderate	0.31	15	0.7	0	3	Vacant and Undeveloped Land	Vacant					Fallbrook
1032430800	FB-44	I	208 S ORANGE AV	VILLAGE RESIDENTIAL (VR-15)	RU	Moderate	0.45	15	0.7	0	5	Vacant and Undeveloped Land	Vacant					Fallbrook
1040653500	FB-45	J	609 S VINE ST	VILLAGE CORE MIXED USE	FBV4	Lower	0.42	24	0.6	0	6	Other Retail Trade and Strip Commercial	Non-Vacant					Fallbrook
1040652100	FB-45	J	627 S VINE ST	VILLAGE CORE MIXED USE	FBV4	Lower	0.60	24	0.6	0	9	Other Retail Trade and Strip Commercial	Non-Vacant					Fallbrook
1042011200	FB-46	K	1461 OLD STAGE RD	GENERAL COMMERCIAL	C36	Lower	0.42	40	0.6	0	10	Surface Parking Lot	Non-Vacant					Fallbrook
1042011600	FB-46	K	1443 OLD STAGE RD	GENERAL COMMERCIAL	C36	Lower	0.22	40	0.6	0	5	Arterial Commercial	Non-Vacant					Fallbrook
1043501000	FB-47		149 LAURINE LN	GENERAL COMMERCIAL	C36	Lower	1.15	40	0.6	0	27	Vacant and Undeveloped Land	Vacant					Fallbrook
1031110200	FB-5		529 N HILL AV	VILLAGE RESIDENTIAL (VR-30)	RU	Lower	0.59	30	0.7	1	11	Single Family Detached	Non-Vacant					Fallbrook



APN	Site Number	Consolidated Site ID	Site Address	General Plan Land Use	Zone	Income Category	Area (Acres)	Maximum Density	Calibration Factor	Existing Units	New Unit Potential	Existing Land Use	Vacant/ Non-Vacant	Assembly Bill 1397	Fifth Cycle (2017 Update)	Fifth Cycle Housing Element	Fourth Cycle Housing Element	Community Planning Area
1032231200	FB-6		215 S MAIN AVE	VILLAGE CORE MIXED USE	FBV1	Lower	0.51	24	0.6	1	6	Arterial Commercial	Non-Vacant					Fallbrook
1032320500	FB-7		251 N VINE ST	VILLAGE CORE MIXED USE	FBV3	Lower	1.63	24	0.7	1	26	Other Retail Trade and Strip Commercial	Non-Vacant					Fallbrook
1032333100	FB-8		306 E ALVARADO ST	VILLAGE CORE MIXED USE	FBV3	Lower	1.34	24	0.7	1	21	Light Industry - General	Non-Vacant					Fallbrook
1032421300	FB-9		200 S ORANGE AV	VILLAGE RESIDENTIAL (VR-15)	RU	Moderate	0.57	15	0.7	0	6	Vacant and Undeveloped Land	Vacant	No-Moderate	Yes	Yes	Yes	Fallbrook
3821915600	LS-1		11925 ROCKCREST RD	VILLAGE RESIDENTIAL (VR-20)	RU	Low Moderate	4.19	20	0.7	0	45	Vacant and Undeveloped Land	Vacant		Yes			Lakeside
3943403900	LS-10		12188 ROCKCREST RD	VILLAGE RESIDENTIAL (VR-24)	RU	Lower	0.67	24	0.7	0	11	Agriculture	Non-Vacant	Yes	Yes	Yes	Yes	Lakeside
3971403300	LS-11		13528 HWY 8 BUSINESS	VILLAGE RESIDENTIAL (VR-15)	C36	Moderate	0.98	15	0.6	1	8	Single Family Detached	Non-Vacant					Lakeside
3971403400	LS-12		13518 HWY 8 BUSINESS	VILLAGE RESIDENTIAL (VR-15)	C36	Moderate	0.59	15	0.6	0	5	Arterial Commercial	Non-Vacant					Lakeside
3972903800	LS-13		13288 HWY 80	VILLAGE RESIDENTIAL (VR-15)	RV	Moderate	4.20	15	0.7	2	42	Spaced Rural Residential	Non-Vacant	No-Moderate	Yes	Yes		Lakeside
3982100300	LS-14		13584 I-8 BUSINESS	GENERAL COMMERCIAL	C34	Moderate	4.86	13.5	0.7	1	45	Spaced Rural Residential	Non-Vacant					Lakeside
3983300200	LS-15		9161 PINKARD LN	VILLAGE RESIDENTIAL (VR-15)	RV	Moderate	0.80	15	0.7	1	7	Single Family Detached	Non-Vacant					Lakeside
4003700200	LS-16		8586 N HAPPY WY	VILLAGE RESIDENTIAL (VR-15)	RV	Moderate	0.90	15	0.7	1	8	Single Family Detached	Non-Vacant					Lakeside
4003702600	LS-17		8419 HOLSO FAR RD	VILLAGE RESIDENTIAL (VR-15)	RV	Moderate	1.01	15	0.7	1	10	Single Family Detached	Non-Vacant					Lakeside
4831010800	LS-18		1228 VICTOR AV	VILLAGE RESIDENTIAL (VR-15)	RV	Moderate	1.01	15	0.7	0	11	Vacant and Undeveloped Land	Vacant		Yes	Yes		Lakeside
4840122700	LS-19		1061 MALENE LN	VILLAGE RESIDENTIAL (VR-15)	RV	Moderate	0.59	15	0.7	1	5	Single Family Detached	Non-Vacant					Lakeside
3822426700	LS-2		11859 WATERHILL RD	VILLAGE RESIDENTIAL (VR-15)	RU	Moderate	0.57	15	0.7	1	5	Single Family Detached	Non-Vacant					Lakeside
4840918100	LS-20		1267 LYONS LN	VILLAGE RESIDENTIAL (VR-24)	RU	Lower	1.02	24	0.7	0	17	Other Retail Trade and Strip Commercial	Non-Vacant					Lakeside
4840922100	LS-21		1172 N 01ST ST	VILLAGE RESIDENTIAL (VR-15)	RV	Moderate	1.86	15	0.7	1	19	Single Family Detached	Non-Vacant	No-Moderate	Yes			Lakeside
4841022700	LS-22		1152 SUMNER AV	VILLAGE RESIDENTIAL (VR-15)	RV	Moderate	0.90	15	0.7	1	8	Single Family Detached	Non-Vacant	No-Moderate	Yes			Lakeside
4841831200	LS-23		1013 SUMNER CT	VILLAGE RESIDENTIAL (VR-15)	RV	Moderate	0.73	15	0.7	1	7	Single Family Multiple-Units	Non-Vacant	No-Moderate	Yes			Lakeside
4841832700	LS-24		1143 SUMNER AV	VILLAGE RESIDENTIAL (VR-15)	RV	Moderate	0.55	15	0.7	0	6	Vacant and Undeveloped Land	Vacant	No-Moderate	Yes	Yes	Yes	Lakeside
3822305900	LS-25	T	9716 WINTER GARDENS BL	GENERAL COMMERCIAL	C34	Lower	0.81	29	0.7	1	15	Office (Low-Rise)	Non-Vacant					Lakeside
3822305800	LS-25	T	12074 WINTERCREST DR	GENERAL COMMERCIAL	C34	Lower	0.58	29	0.7	1	11	Service Station	Non-Vacant					Lakeside
3822305700	LS-25	T	9610 WINTER GARDENS BLVD	GENERAL COMMERCIAL	C34	Lower	0.62	29	0.7	1	12	Office (Low-Rise)	Non-Vacant					Lakeside
4831401400	LS-26	U	1141 PIERRE WY	VILLAGE RESIDENTIAL (VR-15)	RV	Moderate	0.34	15	0.7	0	4	Vacant and Undeveloped Land	Vacant	No-Moderate	Yes	Yes	Yes	Lakeside
4831401200	LS-26	U	1222 PIERRE WY	VILLAGE RESIDENTIAL (VR-15)	RV	Moderate	0.23	15	0.7	0	2	Vacant and Undeveloped Land	Vacant					Lakeside
4831401300	LS-26	U	1220 PIERRE WY	VILLAGE RESIDENTIAL (VR-15)	RV	Moderate	0.14	15	0.7	1	0	Single Family Detached	Non-Vacant					Lakeside



APN	Site Number	Consolidated Site ID	Site Address	General Plan Land Use	Zone	Income Category	Area (Acres)	Maximum Density	Calibration Factor	Existing Units	New Unit Potential	Existing Land Use	Vacant/ Non-Vacant	Assembly Bill 1397	Fifth Cycle (2017 Update)	Fifth Cycle Housing Element	Fourth Cycle Housing Element	Community Planning Area
4831401000	LS-26	U	1139 PIERRE WY	VILLAGE RESIDENTIAL (VR-15)	RV	Moderate	0.36	15	0.7	1	3	Single Family Detached	Non-Vacant					Lakeside
4831400900	LS-26	U	1214 PIERRE WY	VILLAGE RESIDENTIAL (VR-15)	RV	Moderate	0.35	15	0.7	1	3	Single Family Detached	Non-Vacant					Lakeside
4842910100	LS-27	V	1058 N ANZA ST	VILLAGE RESIDENTIAL (VR-15)	RV	Moderate	0.45	15	0.7	0	5	Vacant and Undeveloped Land	Vacant	No-Moderate	Yes	Yes	Yes	Lakeside
4840923300	LS-27	V	1104 N ANZA ST	VILLAGE RESIDENTIAL (VR-15)	RV	Moderate	2.13	15	0.7	2	20	Single Family Multiple-Units	Non-Vacant	No-Moderate	Yes	Yes	Yes	Lakeside
3885521900	LS-28	W	8201 WINTER GARDENS BLVD	GENERAL COMMERCIAL	C36	Lower	0.30	40	0.6	1	6	Other Retail Trade and Strip Commercial	Non-Vacant					Lakeside
3885521800	LS-28	W	12015 SHORT ST	GENERAL COMMERCIAL	C36	Lower	0.33	40	0.6	1	7	Other Retail Trade and Strip Commercial	Non-Vacant					Lakeside
3885521700	LS-28	W	12015 SHORT ST	GENERAL COMMERCIAL	C36	Lower	0.36	40	0.6	1	8	Other Retail Trade and Strip Commercial	Non-Vacant					Lakeside
3885523500	LS-29	X	12055 SHORT ST	VILLAGE RESIDENTIAL (VR-15)	RV	Moderate	0.27	15	0.7	0	3	Vacant and Undeveloped Land	Vacant	No-Moderate	Yes	Yes	Yes	Lakeside
3885523400	LS-29	X	8207 LINDEN RD	VILLAGE RESIDENTIAL (VR-15)	RV	Moderate	0.52	15	0.7	1	4	Warehousing	Non-Vacant	No-Moderate	Yes			Lakeside
3822906300	LS-3		9441 SAGUARO RD	VILLAGE RESIDENTIAL (VR-24)	RU	Lower	0.94	24	0.7	1	15	Single Family Detached	Non-Vacant					Lakeside
3882501000	LS-30	Y	1306 PEPPER DR	GENERAL COMMERCIAL	C36	Lower	0.41	40	0.6	0	10	Other Retail Trade and Strip Commercial	Non-Vacant					Lakeside
3882500900	LS-30	Y	7964 CAJON RD	GENERAL COMMERCIAL	C36	Lower	0.16	40	0.6	0	4	Other Retail Trade and Strip Commercial	Non-Vacant					Lakeside
3882502700	LS-4		1294 PEPPER DR	GENERAL COMMERCIAL	C36	Lower	0.73	40	0.6	0	18	Service Station	Non-Vacant					Lakeside
3882603200	LS-5		1332 PEPPER DR	VILLAGE RESIDENTIAL (VR-30)	RU	Lower	0.55	30	0.7	1	10	Single Family Detached	Non-Vacant					Lakeside
3882603300	LS-6		1324 PEPPER DR	VILLAGE RESIDENTIAL (VR-30)	RU	Lower	0.54	30	0.7	3	8	Single Family Multiple-Units	Non-Vacant					Lakeside
3885521000	LS-7		8210 WINTER GARDENS BL	GENERAL COMMERCIAL	C36	Lower	0.50	40	0.6	1	11	Other Retail Trade and Strip Commercial	Non-Vacant					Lakeside
3940640700	LS-8		12575 LAUREL ST	VILLAGE RESIDENTIAL (VR-30)	RU	Lower	0.51	30	0.7	1	10	Single Family Detached	Non-Vacant					Lakeside
3940641100	LS-9		12596 LAKESHORE DR	VILLAGE RESIDENTIAL (VR-30)	C36	Lower	0.50	30	0.6	0	9	Neighborhood Shopping Center	Non-Vacant					Lakeside
1831511000	NCM-1		1864 ANNA LN	VILLAGE RESIDENTIAL (VR-15)	RU	Moderate	1.85	15	0.7	1	18	Single Family Detached	Non-Vacant	No-Moderate	Yes	Yes		North County Metro
1841810400	NCM-10		350 ESTRELITA DR	VILLAGE RESIDENTIAL (VR-30)	RU	Lower	5.64	30	0.7	1	117	Intensive Agriculture	Non-Vacant	Yes	Yes	Yes	Yes	North County Metro
1841812200	NCM-11		1965 VICTORY DR	VILLAGE RESIDENTIAL (VR-30)	RU	Lower	4.46	30	0.7	1	86	Spaced Rural Residential	Non-Vacant	Yes	Yes	Yes	Yes	North County Metro
1841812300	NCM-12		1901 VICTORY DR	VILLAGE RESIDENTIAL (VR-30)	RU	Lower	1.68	30	0.7	1	34	Spaced Rural Residential	Non-Vacant	Yes	Yes	Yes	Yes	North County Metro
1841812600	NCM-13		2018 VICTORY DR	VILLAGE RESIDENTIAL (VR-30)	RU	Lower	2.97	30	0.7	1	61	Spaced Rural Residential	Non-Vacant	Yes	Yes	Yes	Yes	North County Metro
1841812700	NCM-14		1900 VICTORY DR	VILLAGE RESIDENTIAL (VR-30)	RU	Lower	3.11	30	0.7	1	64	Spaced Rural Residential	Non-Vacant	Yes	Yes	Yes	Yes	North County Metro
1841812800	NCM-15		2022 VICTORY DR	VILLAGE RESIDENTIAL (VR-30)	RU	Lower	4.81	30	0.7	1	100	Spaced Rural Residential	Non-Vacant	Yes	Yes	Yes	Yes	North County Metro



APN	Site Number	Consolidated Site ID	Site Address	General Plan Land Use	Zone	Income Category	Area (Acres)	Maximum Density	Calibration Factor	Existing Units	New Unit Potential	Existing Land Use	Vacant/ Non-Vacant	Assembly Bill 1397	Fifth Cycle (2017 Update)	Fifth Cycle Housing Element	Fourth Cycle Housing Element	Community Planning Area
1841813000	NCM-16		2028 VICTORY DR	VILLAGE RESIDENTIAL (VR-30)	RU	Lower	2.93	30	0.7	1	61	Spaced Rural Residential	Non-Vacant	Yes	Yes	Yes	Yes	North County Metro
1841813100	NCM-17		400 ESTRELITA DR	VILLAGE RESIDENTIAL (VR-30)	RU	Lower	1.00	30	0.7	0	21	Agriculture	Non-Vacant	Yes	Yes	Yes	Yes	North County Metro
1841813300	NCM-18		2102 VICTORY DR	VILLAGE RESIDENTIAL (VR-30)	RU	Lower	8.86	30	0.7	1	185	Spaced Rural Residential	Non-Vacant	Yes	Yes	Yes	Yes	North County Metro
1841813600	NCM-19		380 ESTRELITA DR	VILLAGE RESIDENTIAL (VR-30)	RU	Lower	0.90	30	0.7	1	18	Single Family Detached	Non-Vacant	Yes	Yes	Yes	Yes	North County Metro
1832112800	NCM-2		263 EL VALLE OPULENTO	VILLAGE RESIDENTIAL (VR-15)	RU	Moderate	1.49	15	0.7	0	16	Vacant and Undeveloped Land	Vacant	No-Moderate	Yes	Yes	Yes	North County Metro
1841814300	NCM-20		2106 VICTORY DR	VILLAGE RESIDENTIAL (VR-30)	RU	Lower	2.34	30	0.7	1	48	Spaced Rural Residential	Non-Vacant	Yes	Yes	Yes	Yes	North County Metro
1841814400	NCM-21		1940 VICTORY DR	VILLAGE RESIDENTIAL (VR-30)	RU	Lower	0.74	30	0.7	1	15	Spaced Rural Residential	Non-Vacant	Yes	Yes	Yes	Yes	North County Metro
2170743800	NCM-22		435 PLUMOSA AV	VILLAGE RESIDENTIAL (VR-15)	RU	Moderate	1.09	15	0.7	0	11	Single Family Detached	Non-Vacant	No-Moderate	Yes	Yes		North County Metro
2170812400	NCM-23		299 LAVENDER LN	VILLAGE RESIDENTIAL (VR-15)	RU	Moderate	1.30	15	0.7	0	14	Vacant and Undeveloped Land	Vacant	No-Moderate	Yes	Yes	Yes	North County Metro
2170820800	NCM-24		248 LAVENDER LN	VILLAGE RESIDENTIAL (VR-20)	RU	Low Moderate	5.54	20	0.7	0	76	Field Crops	Non-Vacant	Yes	Yes	Yes	Yes	North County Metro
2170920800	NCM-25		356 PLUMOSA AV	VILLAGE RESIDENTIAL (VR-15)	RU	Moderate	0.68	15	0.7	0	7	Vacant and Undeveloped Land	Vacant	No-Moderate	Yes	Yes	Yes	North County Metro
2170933400	NCM-26		2539 POINSETTIA CT	VILLAGE RESIDENTIAL (VR-15)	RU	Moderate	0.23	15	0.7	0	2	Vacant and Undeveloped Land	Vacant	No-Moderate	Yes	Yes	Yes	North County Metro
2170933500	NCM-27		2515 POINSETTIA CT	VILLAGE RESIDENTIAL (VR-15)	RU	Moderate	0.44	15	0.7	0	5	Vacant and Undeveloped Land	Vacant	No-Moderate	Yes	Yes	Yes	North County Metro
2243103300	NCM-28		546 ROBIN HILL LN	VILLAGE RESIDENTIAL (VR-24)	RS	Lower	3.02	24	0.7	2	49	Spaced Rural Residential	Non-Vacant	Yes	Yes	Yes		North County Metro
2243103400	NCM-29		2101 RIDGEVIEW PL	VILLAGE RESIDENTIAL (VR-24)	RS	Lower	0.59	24	0.7	1	9	Single Family Detached	Non-Vacant					North County Metro
1841214000	NCM-3		2148 PRIMROSE AV	VILLAGE RESIDENTIAL (VR-20)	RU	Low Moderate	1.28	20	0.7	1	17	Single Family Detached	Non-Vacant	Yes	Yes	Yes	Yes	North County Metro
2243103500	NCM-30		532 ROBIN HILL LN	VILLAGE RESIDENTIAL (VR-24)	RS	Lower	0.61	24	0.7	1	9	Single Family Detached	Non-Vacant					North County Metro
2243103600	NCM-31		555 ROBIN HILL LN	VILLAGE RESIDENTIAL (VR-24)	RS	Lower	1.09	24	0.7	1	17	Spaced Rural Residential	Non-Vacant	Yes	Yes	Yes		North County Metro
2263804400	NCM-32		585 RANCHO DE ORO RD	VILLAGE RESIDENTIAL (VR-24)	RS	Lower	3.57	24	0.7	1	59	Spaced Rural Residential	Non-Vacant					North County Metro
2243101500	NCM-33	AC	483 ROBIN HILL LN	VILLAGE RESIDENTIAL (VR-24)	RS	Lower	0.45	24	0.7	0	7	Vacant and Undeveloped Land	Vacant	Yes	Yes	Yes	Yes	North County Metro
2243101400	NCM-33	AC	493 ROBIN HILL LN	VILLAGE RESIDENTIAL (VR-24)	RS	Lower	0.30	24	0.7	0	5	Vacant and Undeveloped Land	Vacant	Yes	Yes	Yes	Yes	North County Metro
2243101100	NCM-33	AC	474 ROBIN HILL LN	VILLAGE RESIDENTIAL (VR-24)	RS	Lower	0.49	24	0.7	0	8	Single Family Detached	Non-Vacant				Yes	North County Metro
1841211400	NCM-34	AD	228 ROBELINI DR	VILLAGE RESIDENTIAL (VR-20)	RU	Low Moderate	0.27	20	0.7	1	3	Single Family Detached	Non-Vacant	Yes	Yes	Yes	Yes	North County Metro
1841213900	NCM-34	AD	210 ROBELINI DR	VILLAGE RESIDENTIAL (VR-20)	RU	Low Moderate	1.28	20	0.7	1	17	Single Family Detached	Non-Vacant	Yes	Yes	Yes	Yes	North County Metro
1841812500	NCM-35	L	1933 VICTORY DR	VILLAGE RESIDENTIAL (VR-30)	RU	Lower	0.30	30	0.7	1	5	Spaced Rural Residential	Non-Vacant	Yes	Yes	Yes	Yes	North County Metro
1841812400	NCM-35	L	1955 VICTORY DR	VILLAGE RESIDENTIAL (VR-30)	RU	Lower	1.21	30	0.7	1	24	Spaced Rural Residential	Non-Vacant	Yes	Yes	Yes	Yes	North County Metro
1841813500	NCM-36	M	402 ESTRELITA DR	VILLAGE RESIDENTIAL (VR-30)	RU	Lower	0.80	30	0.7	0	17	Vacant and Undeveloped Land	Vacant	Yes	Yes	Yes	Yes	North County Metro
1841813400	NCM-36	M	396 ESTRELITA DR	VILLAGE RESIDENTIAL (VR-30)	RU	Lower	0.48	30	0.7	1	9	Single Family Detached	Non-Vacant	Yes	Yes	Yes	Yes	North County Metro



APN	Site Number	Consolidated Site ID	Site Address	General Plan Land Use	Zone	Income Category	Area (Acres)	Maximum Density	Calibration Factor	Existing Units	New Unit Potential	Existing Land Use	Vacant/ Non-Vacant	Assembly Bill 1397	Fifth Cycle (2017 Update)	Fifth Cycle Housing Element	Fourth Cycle Housing Element	Community Planning Area
1841221100	NCM-4		2195 PRIMROSE AV	VILLAGE RESIDENTIAL (VR-20)	RU	Low Moderate	0.59	20	0.7	0	8	Vacant and Undeveloped Land	Vacant	Yes	Yes	Yes	Yes	North County Metro
1841620200	NCM-5		1987 BUENA CREEK RD	VILLAGE RESIDENTIAL (VR-30)	RU	Lower	2.00	30	0.7	0	2	Vacant and Undeveloped Land	Vacant	Yes	Yes	Yes	Yes	North County Metro
1841620300	NCM-6		1975 BUENA CREEK RD	VILLAGE RESIDENTIAL (VR-30)	RU	Lower	3.61	30	0.7	1	43	Spaced Rural Residential	Non-Vacant	Yes	Yes	Yes	Yes	North County Metro
1841810100	NCM-7		2132 VICTORY DR	VILLAGE RESIDENTIAL (VR-30)	RU	Lower	2.11	30	0.7	0	44	Intensive Agriculture	Non-Vacant	Yes	Yes	Yes	Yes	North County Metro
1841810200	NCM-8		244 ESTRELITA DR	VILLAGE RESIDENTIAL (VR-30)	RU	Lower	1.10	30	0.7	0	23	Agriculture	Non-Vacant	Yes	Yes	Yes	Yes	North County Metro
1841810300	NCM-9		2134 VICTORY DR	VILLAGE RESIDENTIAL (VR-30)	RU	Lower	3.36	30	0.7	1	69	Spaced Rural Residential	Non-Vacant	Yes	Yes	Yes	Yes	North County Metro
2811901500	RM-1		222 S 14TH ST	GENERAL COMMERCIAL	RMV5	Moderate	0.83	14.5	0.6	0	7	Vacant and Undeveloped Land	Vacant					North County Metro
2821301400	RM-10		1860 ROBERTSON ST	VILLAGE RESIDENTIAL (VR-20)	RMV5	Low Moderate	1.05	20	0.6	1	12	Spaced Rural Residential	Non-Vacant					Ramona
2821301900	RM-13		173 RAMONA ST	GENERAL COMMERCIAL	RMV5	Moderate	2.30	14.5	0.6	0	20	Vacant and Undeveloped Land	Vacant		Yes	Yes		Ramona
2821302000	RM-14		1669 VERMONT ST	GENERAL COMMERCIAL	RMV5	Moderate	1.04	14.5	0.6	0	9	Field Crops	Non-Vacant	No-Moderate	Yes	Yes		Ramona
2821304600	RM-15		1670 VERMONT ST	GENERAL COMMERCIAL	RMV5	Moderate	1.13	14.5	0.5	0	8	Vacant and Undeveloped Land	Vacant					Ramona
2821305300	RM-16		137 N LETTON ST	VILLAGE RESIDENTIAL (VR-15)	RV	Moderate	1.12	15	0.7	1	11	Spaced Rural Residential	Non-Vacant					Ramona
2821307300	RM-17		1875 CHRISTIANA CT	VILLAGE RESIDENTIAL (VR-15)	RMV4	Moderate	5.71	15	0.6	0	35	Field Crops	Non-Vacant	No-Moderate	Yes	Yes	Yes	Ramona
2821412600	RM-18		248 S HUNTER ST	GENERAL COMMERCIAL	RMV5	Moderate	1.35	14.5	0.5	0	10	Vacant and Undeveloped Land	Vacant					Ramona
2821412700	RM-19		2162 VERMONT ST	GENERAL COMMERCIAL	RMV4	Moderate	0.97	14.5	0.5	0	7	Vacant and Undeveloped Land	Vacant					Ramona
2811601600	RM-2		153 LA BREA CT	VILLAGE RESIDENTIAL (VR-20)	RMV4	Low Moderate	1.00	20	0.6	1	11	Single Family Detached	Non-Vacant					Ramona
2821412800	RM-20		2142 VERMONT ST	GENERAL COMMERCIAL	RMV4	Moderate	1.02	14.5	0.5	0	7	Vacant and Undeveloped Land	Vacant					Ramona
2821413000	RM-21		243 S JULIAN ST	GENERAL COMMERCIAL	RMV4	Moderate	1.05	14.5	0.5	0	8	Vacant and Undeveloped Land	Vacant					Ramona
2821502500	RM-22		1854 MAIN ST	GENERAL COMMERCIAL	RMV5	Moderate	0.83	14.5	0.5	0	6	Vacant and Undeveloped Land	Vacant					Ramona
2821912800	RM-23		2560 VERMONT ST	GENERAL COMMERCIAL	RMV4	Moderate	0.95	14.5	0.5	0	7	Vacant and Undeveloped Land	Vacant					Ramona
2821913300	RM-24		2462 VERMONT ST	GENERAL COMMERCIAL	RMV4	Moderate	0.95	14.5	0.5	0	7	Vacant and Undeveloped Land	Vacant					Ramona
2821913400	RM-25		2444 VERMONT ST	GENERAL COMMERCIAL	RMV4	Moderate	0.97	14.5	0.5	0	7	Vacant and Undeveloped Land	Vacant					Ramona
2821913500	RM-26		2424 VERMONT ST	GENERAL COMMERCIAL	RMV4	Moderate	0.98	14.5	0.5	0	7	Vacant and Undeveloped Land	Vacant					Ramona
2821923000	RM-27		248 S KALBAUGH ST	GENERAL COMMERCIAL	RMV4	Moderate	0.93	14.5	0.5	0	7	Other Retail Trade and Strip Commercial	Non-Vacant					Ramona
2821923100	RM-28		2360 VERMONT ST	GENERAL COMMERCIAL	RMV4	Moderate	0.99	14.5	0.5	0	7	Vacant and Undeveloped Land	Vacant					Ramona
2821923200	RM-29		2342 VERMONT ST	GENERAL COMMERCIAL	RMV4	Moderate	0.98	14.5	0.5	0	7	Vacant and Undeveloped Land	Vacant					Ramona
2811710400	RM-3		230 RAMONA ST	GENERAL COMMERCIAL	RMV5	Moderate	2.50	14.5	0.5	0	18	Vacant and Undeveloped Land	Vacant					Ramona
2822010300	RM-30		2555 KELLY AV	GENERAL COMMERCIAL	RMV4	Moderate	0.91	14.5	0.5	0	7	Vacant and Undeveloped Land	Vacant					Ramona



APN	Site Number	Consolidated Site ID	Site Address	General Plan Land Use	Zone	Income Category	Area (Acres)	Maximum Density	Calibration Factor	Existing Units	New Unit Potential	Existing Land Use	Vacant/ Non-Vacant	Assembly Bill 1397	Fifth Cycle (2017 Update)	Fifth Cycle Housing Element	Fourth Cycle Housing Element	Community Planning Area
2822010400	RM-31		2535 KELLY AV	GENERAL COMMERCIAL	RMV4	Moderate	0.86	14.5	0.5	0	6	Vacant and Undeveloped Land	Vacant					Ramona
2822010500	RM-32		351 WYNOLA ST	GENERAL COMMERCIAL	RMV4	Moderate	0.96	14.5	0.5	0	7	Vacant and Undeveloped Land	Vacant					Ramona
2822020100	RM-33		358 WYNOLA ST	GENERAL COMMERCIAL	RMV4	Moderate	0.88	14.5	0.5	0	6	Vacant and Undeveloped Land	Vacant					Ramona
2822020400	RM-34		349 S KALBAUGH ST	GENERAL COMMERCIAL	RMV4	Moderate	1.83	14.5	0.5	0	13	Vacant and Undeveloped Land	Vacant					Ramona
2822120100	RM-35		354 S HUNTER ST	GENERAL COMMERCIAL	RMV5	Moderate	0.61	14.5	0.5	0	4	Vacant and Undeveloped Land	Vacant					Ramona
2822120200	RM-36		2173 KELLY AV	GENERAL COMMERCIAL	RMV5	Moderate	0.82	14.5	0.5	0	6	Vacant and Undeveloped Land	Vacant					Ramona
2822121500	RM-37		2123 KELLY AV	GENERAL COMMERCIAL	RMV4	Moderate	0.50	14.5	0.5	0	4	Vacant and Undeveloped Land	Vacant					Ramona
2822210100	RM-38		354 S JULIAN ST	GENERAL COMMERCIAL	RMV4	Moderate	0.63	14.5	0.5	0	5	Vacant and Undeveloped Land	Vacant					Ramona
2822210200	RM-39		2073 KELLY AV	GENERAL COMMERCIAL	RMV4	Moderate	0.81	14.5	0.5	0	6	Vacant and Undeveloped Land	Vacant					Ramona
2812610200	RM-4		112 11TH ST	VILLAGE RESIDENTIAL (VR-20)	RMV4	Low Moderate	1.29	20	0.6	0	15	Vacant and Undeveloped Land	Vacant					Ramona
2822210300	RM-40		2053 KELLY AV	GENERAL COMMERCIAL	RMV4	Moderate	0.84	14.5	0.5	0	6	Vacant and Undeveloped Land	Vacant					Ramona
2822220300	RM-41		1971 KELLY AV	GENERAL COMMERCIAL	RMV4	Moderate	0.62	14.5	0.5	0	5	Vacant and Undeveloped Land	Vacant					Ramona
2822613400	RM-42		444 RAMONA ST	VILLAGE RESIDENTIAL (VR-15)	RMV5	Moderate	2.29	15	0.6	0	19	Neighborhood Shopping Center	Non-Vacant	No-Moderate	Yes	Yes	Yes	Ramona
2822616000	RM-43		1625 F ST	VILLAGE RESIDENTIAL (VR-24)	RU	Lower	3.40	24	0.7	0	57	Field Crops	Non-Vacant	Yes	Yes	Yes	Yes	Ramona
2822616200	RM-44		1639 F ST	VILLAGE RESIDENTIAL (VR-24)	RMV4	Lower	1.47	24	0.6	0	20	Field Crops	Non-Vacant	Yes	Yes	Yes	Yes	Ramona
2822633000	RM-45		739 S 14TH ST	VILLAGE RESIDENTIAL (VR-15)	RV	Moderate	1.09	15	0.7	0	11	Vacant and Undeveloped Land	Vacant	No-Moderate	Yes	Yes	Yes	Ramona
2841713500	RM-46		538 12TH ST	VILLAGE RESIDENTIAL (VR-10.9)	RU	Moderate	1.98	10.9	0.7	0	15	Vacant and Undeveloped Land	Vacant		Yes	Yes		Ramona
2821305700	RM-47	N	1841 LA BREA ST	VILLAGE RESIDENTIAL (VR-20)	RMV5	Low Moderate	0.25	20	0.6	1	2	Spaced Rural Residential	Non-Vacant					Ramona
2822222600	RM-48	O	1923 KELLY AV	GENERAL COMMERCIAL	RMV4	Moderate	0.42	14.5	0.5	0	3	Vacant and Undeveloped Land	Vacant					Ramona
2822221000	RM-48	O	1951 KELLY AV	GENERAL COMMERCIAL	RMV4	Moderate	0.44	14.5	0.5	0	3	Vacant and Undeveloped Land	Vacant					Ramona
2822627400	RM-49	P	1500 15TH ST	VILLAGE RESIDENTIAL (VR-24)	RMV5	Lower	1.20	24	0.6	0	17	Vacant and Undeveloped Land	Vacant	Yes	Yes	Yes	Yes	Ramona
2822621500	RM-49	P	430 16TH ST	VILLAGE RESIDENTIAL (VR-24)	RMV5	Lower	0.46	24	0.6	0	6	Office (Low-Rise)	Non-Vacant	Yes	Yes	Yes	Yes	Ramona
2812621000	RM-5		176 11TH ST	VILLAGE RESIDENTIAL (VR-20)	RMV4	Low Moderate	1.83	20	0.6	0	22	Vacant and Undeveloped Land	Vacant					Ramona
2813420600	RM-50	Q	175 07TH ST	VILLAGE RESIDENTIAL (VR-24)	RMV5	Lower	0.25	24	0.6	1	3	Vacant and Undeveloped Land	Vacant				Yes	Ramona
2813420500	RM-50	Q	677 B ST	VILLAGE RESIDENTIAL (VR-24)	RMV5	Lower	0.27	24	0.6	1	3	Single Family Detached	Non-Vacant	Yes			Yes	Ramona
2814240100	RM-6		555 A ST	VILLAGE RESIDENTIAL (VR-20)	RMV5	Low Moderate	2.75	20	0.6	0	33	Vacant and Undeveloped Land	Vacant					Ramona
2821300200	RM-7		223 N LETTON ST	VILLAGE RESIDENTIAL (VR-15)	RV	Moderate	1.68	15	0.7	1	17	Spaced Rural Residential	Non-Vacant					Ramona
2821300600	RM-8		283 N LETTON ST	VILLAGE RESIDENTIAL (VR-15)	RV	Moderate	0.85	15	0.7	1	8	Spaced Rural Residential	Non-Vacant					Ramona



APN	Site Number	Consolidated Site ID	Site Address	General Plan Land Use	Zone	Income Category	Area (Acres)	Maximum Density	Calibration Factor	Existing Units	New Unit Potential	Existing Land Use	Vacant/ Non-Vacant	Assembly Bill 1397	Fifth Cycle (2017 Update)	Fifth Cycle Housing Element	Fourth Cycle Housing Element	Community Planning Area
5032624800	SV-1		3045 SWEETWATER RD	VILLAGE RESIDENTIAL (VR-15)	RV	Moderate	0.91	15	0.7	1	9	Single Family Detached	Non-Vacant					Spring Valley
5032907400	SV-10		8935 TROY ST	GENERAL COMMERCIAL	C36	Lower	0.99	40	0.6	2	22	Other Retail Trade and Strip Commercial	Non-Vacant					Spring Valley
5033910500	SV-11		2555 SWEETWATER RD	VILLAGE RESIDENTIAL (VR-15)	RV	Moderate	0.63	15	0.7	1	6	Single Family Detached	Non-Vacant					Spring Valley
5033921000	SV-12		2647 RAE DR	VILLAGE RESIDENTIAL (VR-15)	RV	Moderate	1.05	15	0.7	1	10	Single Family Detached	Non-Vacant	No-Moderate	Yes	Yes	Yes	Spring Valley
5033921200	SV-13		2648 CENTRAL AV	VILLAGE RESIDENTIAL (VR-15)	RV	Moderate	0.78	15	0.7	1	7	Single Family Detached	Non-Vacant					Spring Valley
5034000400	SV-14		8873 VALENCIA ST	VILLAGE RESIDENTIAL (VR-15)	RV	Moderate	0.66	15	0.7	1	6	Single Family Detached	Non-Vacant					Spring Valley
5040110500	SV-15		9047 KENWOOD DR	VILLAGE RESIDENTIAL (VR-20)	RU	Low Moderate	0.51	20	0.7	0	7	Other Transportation	Non-Vacant	Yes	Yes	Yes	Yes	Spring Valley
5040112500	SV-16		9051 KENWOOD DR	VILLAGE RESIDENTIAL (VR-20)	RU	Low Moderate	0.73	20	0.7	2	8	Single Family Multiple-Units	Non-Vacant					Spring Valley
5780114800	SV-17		2136 EL PASILLO	VILLAGE RESIDENTIAL (VR-10.9)	RV	Moderate	0.60	10.9	0.7	0	5	Vacant and Undeveloped Land	Vacant		Yes	Yes		Spring Valley
5780127500	SV-18		2038 ILDICA WY	VILLAGE RESIDENTIAL (VR-10.9)	RV	Moderate	0.25	10.9	0.7	0	2	Vacant and Undeveloped Land	Vacant		Yes	Yes		Spring Valley
5780128000	SV-19		2051 SWEETWATER RD	VILLAGE RESIDENTIAL (VR-10.9)	RV	Moderate	1.11	10.9	0.7	0	9	Vacant and Undeveloped Land	Vacant		Yes	Yes		Spring Valley
5032734100	SV-2		8858 TROY ST	GENERAL COMMERCIAL	C36	Lower	1.01	40	0.6	2	22	Single Family Multiple-Units	Non-Vacant					Spring Valley
5701801300	SV-20		4220 CORDELLE LN	VILLAGE RESIDENTIAL (VR-24)	RU	Lower	0.83	24	0.7	2	12	Single Family Multiple-Units	Non-Vacant					Sweetwater
5032800700	SV-3		8653 TROY ST	GENERAL COMMERCIAL	C36	Lower	0.98	40	0.6	1	23	Other Retail Trade and Strip Commercial	Non-Vacant					Spring Valley
5032800800	SV-4		2798 CLEGG CT	GENERAL COMMERCIAL	C36	Lower	0.95	40	0.6	1	22	Other Retail Trade and Strip Commercial	Non-Vacant					Spring Valley
5032800900	SV-5		8691 TROY ST	GENERAL COMMERCIAL	C36	Lower	1.00	40	0.6	2	22	Single Family Multiple-Units	Non-Vacant					Spring Valley
5032900300	SV-6		8839 TROY ST	GENERAL COMMERCIAL	C36	Lower	0.95	40	0.6	1	22	Single Family Detached	Non-Vacant					Spring Valley
5032900600	SV-7		8905 TROY ST	GENERAL COMMERCIAL	C36	Lower	0.98	40	0.6	3	21	Other Retail Trade and Strip Commercial	Non-Vacant					Spring Valley
5032902200	SV-8		8902 VALENCIA ST	VILLAGE RESIDENTIAL (VR-15)	RV	Moderate	0.99	15	0.7	1	9	Single Family Detached	Non-Vacant					Spring Valley
5032902300	SV-9		8882 VALENCIA ST	VILLAGE RESIDENTIAL (VR-15)	RV	Moderate	0.97	15	0.7	1	9	Single Family Detached	Non-Vacant					Spring Valley
6462403000	O-1		Otay Mesa and Harvest Road	Specific Plan (Otay 250)	S88	Mixed (Above Moderate and Lower)	41.20	20-40	N/A	0	663 Lower-Income	Vacant and Undeveloped Land	Vacant					Otay
6460803300	O-2		Otay Mesa and Harvest Road	Specific Plan (Otay 250)	S89	Mixed (Above Moderate and Lower)	62.53	20-40	N/A	0	663 Lower-Income	Vacant and Undeveloped Land	Vacant					Otay
6460803200	O-3		Otay Mesa and Harvest Road	Specific Plan (Otay 250)	S90	Mixed (Above Moderate and Lower)	35.26	20-40	N/A	0	663 Lower-Income	Vacant and Undeveloped Land	Vacant					Otay



APN	Site Number	Consolidated Site ID	Site Address	General Plan Land Use	Zone	Income Category	Area (Acres)	Maximum Density	Calibration Factor	Existing Units	New Unit Potential	Existing Land Use	Vacant/ Non-Vacant	Assembly Bill 1397	Fifth Cycle (2017 Update)	Fifth Cycle Housing Element	Fourth Cycle Housing Element	Community Planning Area
6463101700	O-4		Otay Mesa and Harvest Road	Specific Plan (Otay 250)	S91	Mixed (Above Moderate and Lower)	48.46	20-40	N/A	0	663 Lower-Income	Vacant and Undeveloped Land	Vacant					Otay