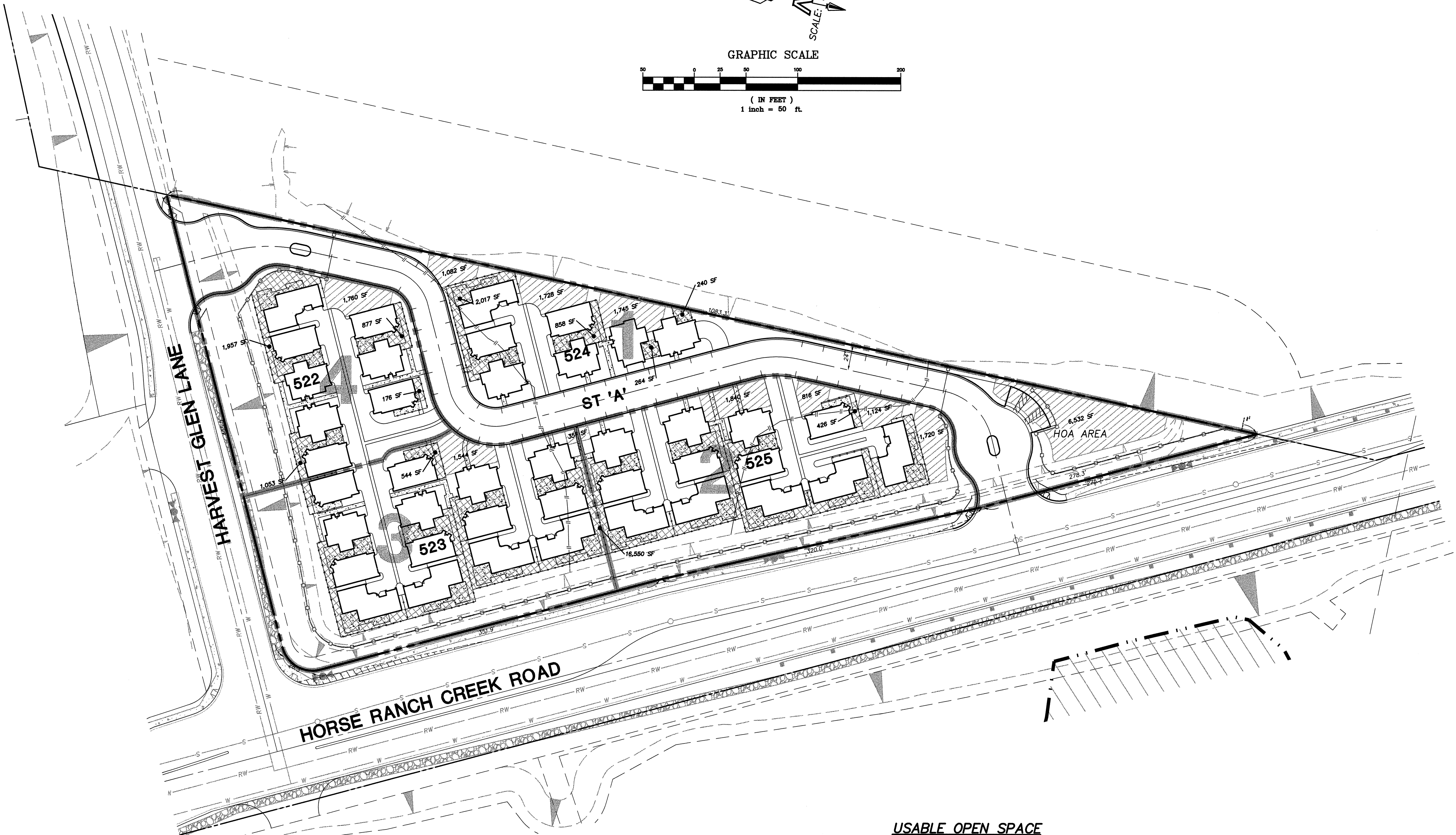
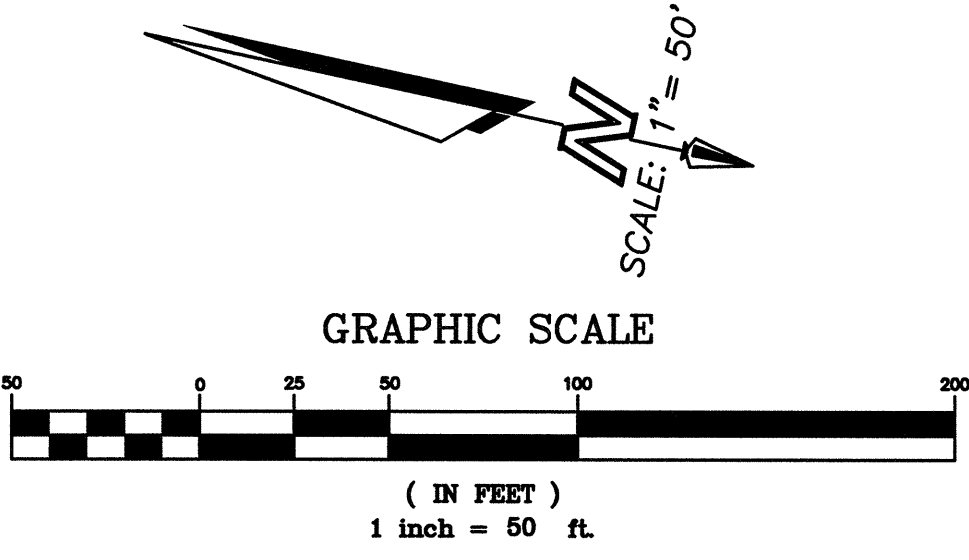


COUNTY OF SAN DIEGO TRACT 5338 RPL-7 CAMPUS PARK OPEN SPACE EXHIBIT



USABLE OPEN SPACE

GROUP USABLE OPEN SPACE	
REQUIRED 150 SF PER UNIT (COUNTY)	6,150 SF
REQUIRED 200 SF PER UNIT (*)	8,200 SF
DESIGNATED CHILDRENS PLAY AREA (*)	
400 SF PER 1ST 25 UNITS	500 SF
100 SF PER ADDITIONAL 25 UNITS	
GROUP USABLE OPEN SPACE PROVIDED	20,242 SF
PRIVATE USABLE OPEN SPACE	
REQUIRED 100 SF PER UNIT (COUNTY & *)	4,100 SF
PRIVATE USABLE OPEN SPACE PROVIDED **	25,400 SF

* PER FALLBROOK DESIGN GUIDELINE
 ** PRIVATE USABLE OPEN SPACE PROVIDED ON BUILDING PORCHES AND DECKS (SEE PRELIM. ARCH PLANS)

LEGEND

- SITE BOUNDARY
- GROUP USABLE OPEN SPACE (MIN DIMENSION: 15')
- PRIVATE USABLE OPEN SPACE (MIN DIMENSION: PATIO 8', DECK 6')
- PHASE LINE
- PHASE NUMBER
- LOT NUMBER

LINDMARK
CONSULTING
Professional Engineering Surveying
3825 Chula Vista Avenue, Suite 200
San Diego, CA 92121, (619) 587-0070

COUNTY OF SAN DIEGO TRACT 5338 RPL 7
VESTING SITE PLAN FOR
CAMPUS PARK
MF2 OPEN SPACE EXHIBIT

SHEET NO. 2 OF 18 SHEETS

P:\300-410310\plan\MF2-2.dwg 11/15/2010 10:28 PM PST