

**EL MONTE SAND MINING PROJECT  
DRAFT SUBSEQUENT EIR PUBLIC MEETING  
PUBLIC REVIEW PERIOD AUG. 30 – OCT. 29, 2018**



**SEPTEMBER 25, 2018**

## PURPOSE OF THIS MEETING

1. Overview of the project process
2. Summary of DSEIR information:
  - Project description
  - Potential impacts identified
  - Project alternatives
3. Access documentation, provide comments to staff
4. Opportunity for questions/comments

## OPPORTUNITIES FOR PUBLIC INPUT DURING PROCESSING OF THE EL MONTE SAND MINING PROJECT

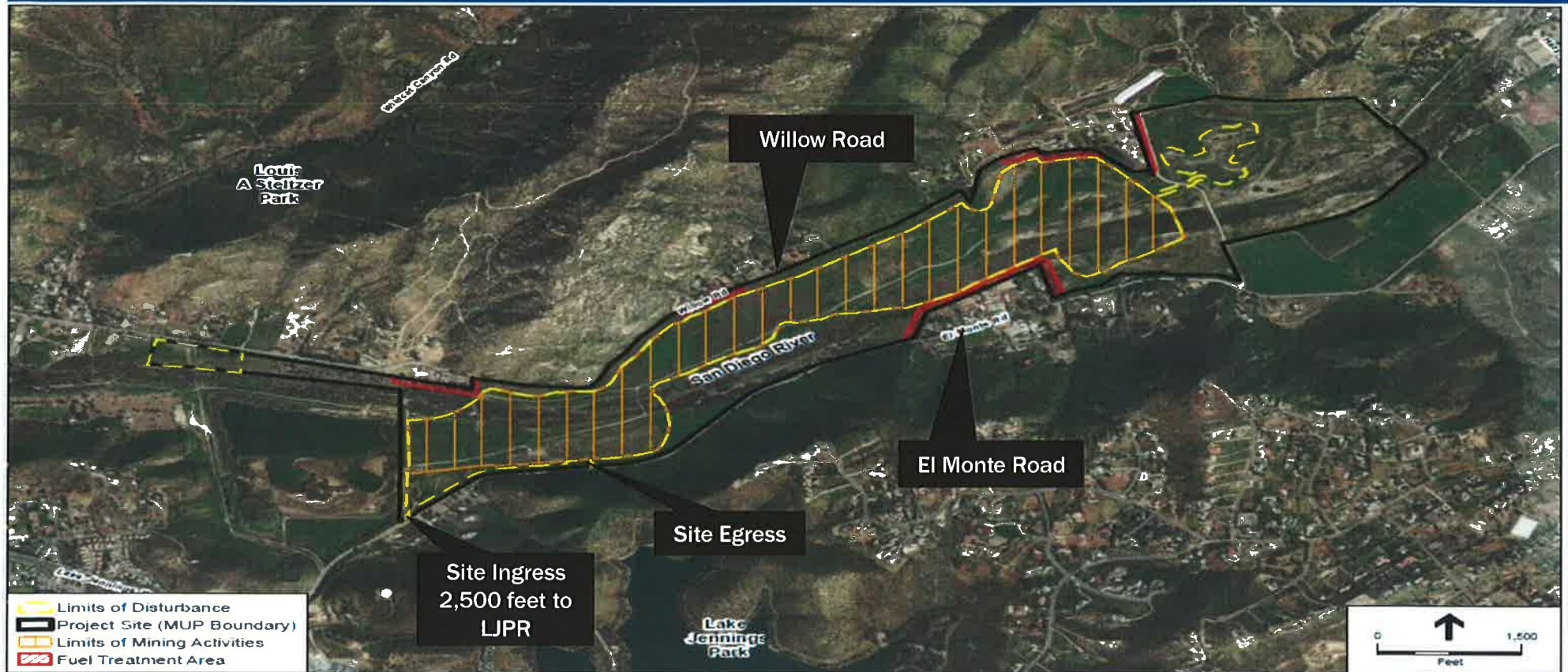


## PROJECT PERMITS

1. Major Use Permit - PDS2015-MUP-98-014W2
2. Reclamation Plan Permit – PDS2015-RP-15-001

The Draft Subsequent EIR is the supporting environmental document required by CEQA and a Final version must be certified.

# PROJECT LOCATION



SOURCE: ESRI

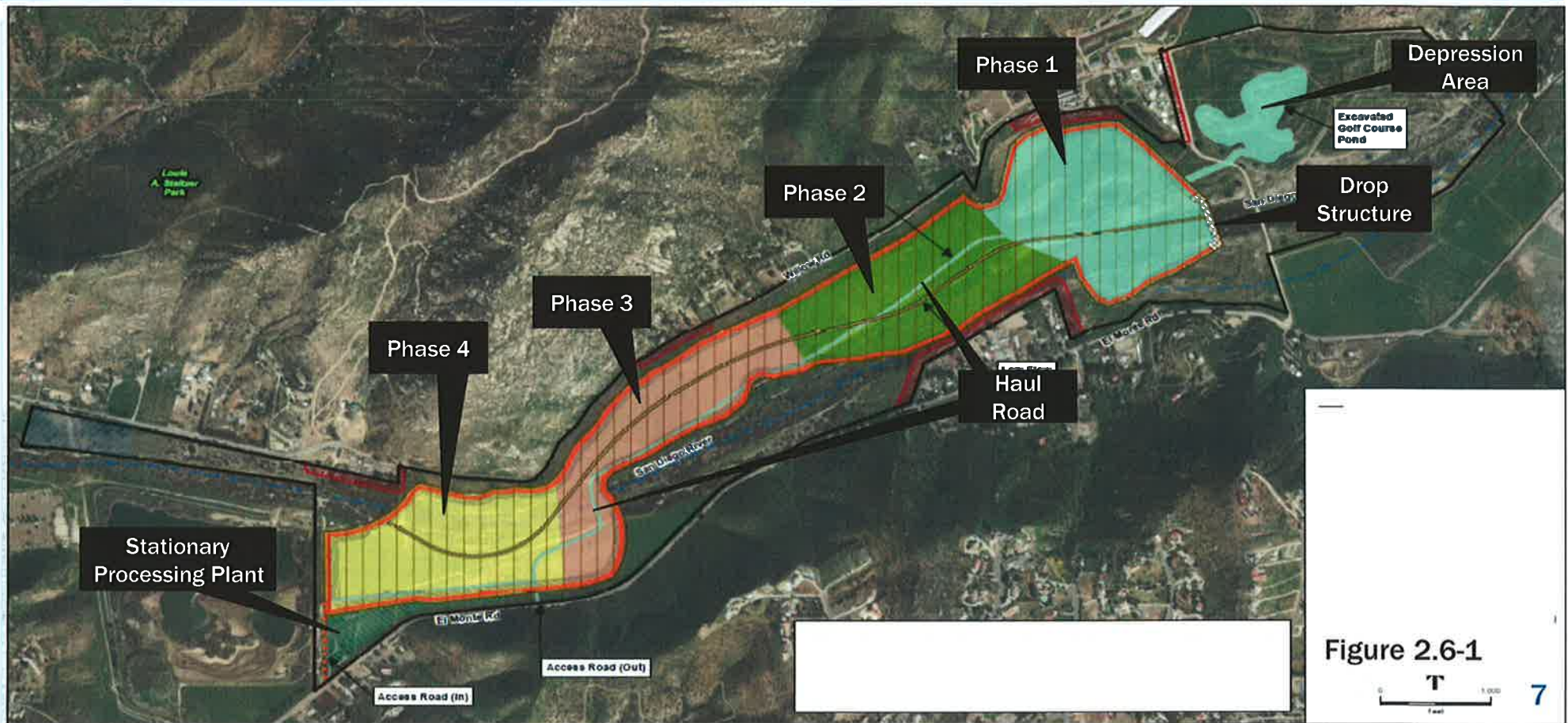
Figure 1-3

El Monte Sand Mining Area Affected by the Project

## PROJECT DESCRIPTION CHANGE

<b>Project Description Feature</b>	<b>2015 - NOP</b>	<b>2018 - DSEIR</b>
<b>Aggregate Production</b>	<b>18 million tons</b>	<b>12.5 million tons</b>
<b>Time (Mining/Revegetation)</b>	<b>15 years / +4 years</b>	<b>12 years / + 4 years</b>
<b>Mining Footprint</b>	<b>167 acres</b>	<b>228 acres</b>
<b>Maximum Depth</b>	<b>90 feet</b>	<b>41 feet</b>
<b>Daily Truck Trips</b>	<b>231 round trips</b>	<b>157 round trips</b>

# PROJECT DESCRIPTION (CHAPTER 1)



# POST-MINING ACTIVITIES

## Reclamation

- Final slopes
- Low-flow channel

## Revegetation

- Native habitats
- Restore ecological functions
- Mitigation as required by CEQA

## Biological Open Space Easements

# TRAILS AND STAGING AREA - PHASE 1

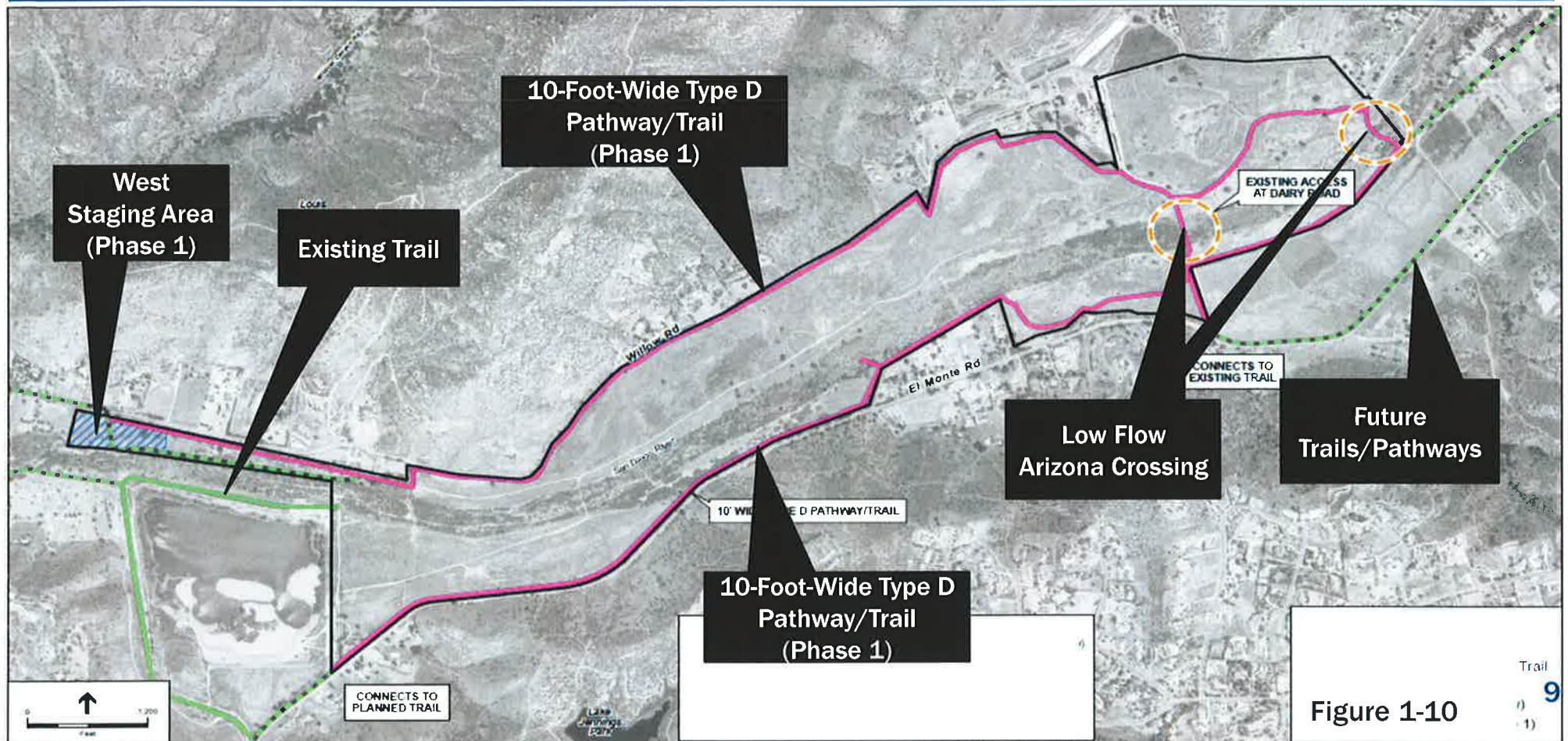
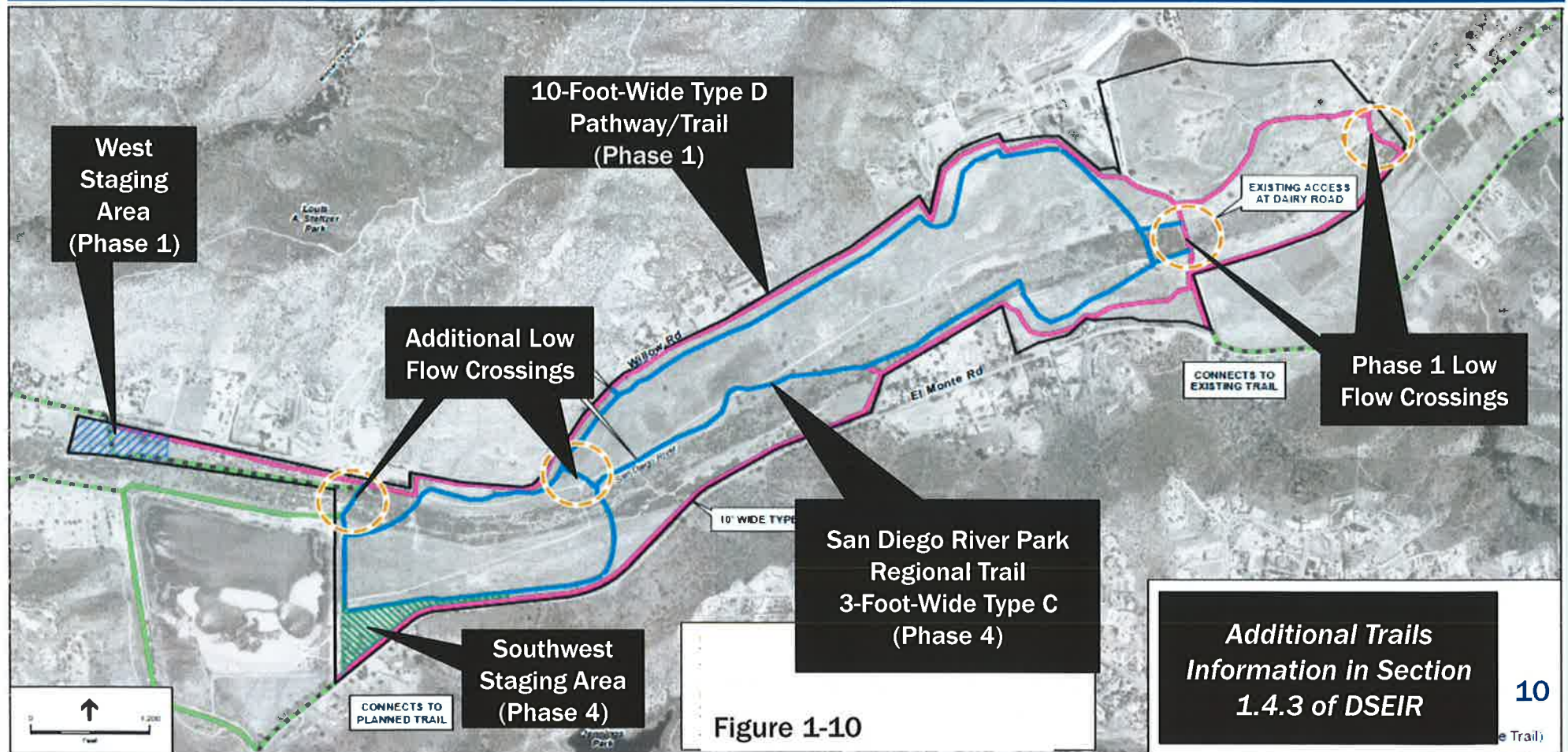


Figure 1-10

# TRAILS AND STAGING AREAS – PHASES 1 - 4



## NOT PROPOSED/ANALYZED

The Project does NOT propose the following:

- Groundwater Use
- Drilling
- Blasting
- Rock Crushing
- Batch Plant

## MITIGATED IMPACTS

CEQA requires:

- Analysis of comprehensive list of environmental issues
- Identification of potentially significant impacts
- Propose mitigation measures
- Level of significance determination

# MITIGATED IMPACTS

## 1. Air Quality (Chapter 2.2)

### Impacts:

- Expose sensitive receptors to substantial pollutant concentrations

### Measures to mitigate impact:

- USEPA Tier 4 or cleaner engines
- Dust control measures
- Maintenance of trucks and equipment
- Prohibit Idling of more than 5 minutes
- Water spraying at aggregate transfer points

# MITIGATED IMPACTS

## 2. Biological Resources (Chapter 2.3)

### Impacts:

- Sensitive species and habitats, wetlands

### Measures to mitigate impacts:

- Nesting season avoidance
- Pre-construction surveys, monitoring
- Habitat mitigation and creation
- Avoidance of mature riparian woodland
- Reclamation, revegetation, and resource management plans

# MITIGATED IMPACTS

## 3. Cultural Resources (Chapter 2.4)

### Impacts:

- Known and potential historic/archaeological sites

### Measures to mitigate impacts:

- Open Space Easements
- Temporary fencing and buffer areas
- Archaeological and Native American monitoring

## MITIGATED IMPACTS

### 4. Paleontological Resources (Chapter 2.5)

#### Impacts:

- Marginal potential for resources

#### Measures to mitigate impact:

- Paleontological resource monitoring

# MITIGATED IMPACTS

## 5. Hazards (Chapter 2.6)

Impacts:

- Vectors

Measures to mitigate impact:

- Implement Vector Management Plan

# MITIGATED IMPACTS

## 6. Noise (Chapter 2.9)

### Impacts:

- Potential to exceed sound level limits

### Measures to mitigate impacts:

- Limit operation hours
- Queuing of trucks at project entrance NOT allowed
- Maintain equipment and trucks including mufflers
- Direct equipment noise away from nearest sensitive receptors
- Maintain minimum distances to comply with sound level limits

## MITIGATED IMPACTS

### 7. Traffic (Chapter 2.10)

#### Impacts:

- Lake Jennings Park Road/El Monte Road/Julian Ave. intersection
- LJPR segment (I-8 WB ramp to Blossom Valley Rd)
- LJPR and I-8 westbound ramp intersection

#### Measures to mitigate impacts:

- Install traffic signal, restripe, and improve crossings at intersection
- Restripe LJPR to two southbound lanes;
- Pay Transportation Impact Fee (TIF)

# SIGNIFICANT/UNAVOIDABLE IMPACTS

## 1. Aesthetics/Visual Resources (Chapter 2.1)

### Impacts:

- Scenic Vistas/Scenic Resources
- Visual Character/Quality

## 2. Land Use (Chapter 2.7)

### Impact:

- Non-conformance with Scenic (S) Designator during mining

### Mitigation:

- El Monte Road Screening Plan (Figure 2.1-13)

# SIGNIFICANT/UNAVOIDABLE IMPACTS

## 3. Mineral Resources Chapter (2.8)

### Impacts:

- Loss of known resource of value to region

### Mitigation:

- No feasible mitigation

## VALLEY FEVER (CHAPTER S.3 AND APPENDIX Q)

- Addressed in the DSEIR due to public comments
- No specific CEQA significance thresholds for Valley Fever
- Details are presented in Chapter S.3 (Areas of Controversy) and Valley Fever Technical Report (Appendix Q)
- Determination - The proposed project has the potential to expose workers, nearby residents, and visitors to the spores of the fungus, if it is present.
- Measures to reduce potential exposure are related to controlling emissions of soil particles/dust

## PROJECT ALTERNATIVES (CHAPTER 4)

Feature	Proposed Project	Alternative (1) No Project	Alternative (2) Reduced Areal Extent	Alternative (3) Altered Areal Extent
Aggregate Production	12.5 million tons	0 tons	10.3 million tons	12.5 million tons
Duration (Mining/Revegetation)	12 years/+4	0 years	~ 10 years/+4	12 years/+4
Mining Footprint	228 acres	0 acres	~ 194 acres	228 acres
Maximum Depth	41 feet	0 feet	41 feet	41 feet
Daily Truck Trips	157	0 round trips	157	157
Impact Reductions	—	All impacts avoided	Aesthetics	Aesthetics
Meets Project Objectives	Yes	No	Yes	Yes

## DRAFT SEIR DOCUMENTS AVAILABLE AT:

### Online:

- [https://www.sandiegocounty.gov/content/sdc/pds/ceqa/El\\_Monte\\_Public\\_Review.html](https://www.sandiegocounty.gov/content/sdc/pds/ceqa/El_Monte_Public_Review.html)

### Hard Copies and CDs:

- Lakeside Branch Library, 9839 Vine Street, Lakeside
- Santee Branch Library, 9225 Carlton Hills Blvd., #17, Santee
- Planning & Development Services, 5510 Overland Ave., Suite 110, San Diego

## SUBMITTAL OF PUBLIC COMMENTS

### Email To:

- [Heather.Steven@sdcounty.ca.gov](mailto:Heather.Steven@sdcounty.ca.gov)
- [Robert.Hingtgen@sdcounty.ca.gov](mailto:Robert.Hingtgen@sdcounty.ca.gov)

### Mail:

- Planning & Development Services  
5510 Overland Ave., Suite 110  
San Diego, CA 92123

Public Review Period Ends 10/29/2018 at 4:00 P.M.

**EL MONTE SAND MINING PROJECT  
DRAFT SUBSEQUENT EIR PUBLIC MEETING**



**SEPTEMBER 25, 2018**