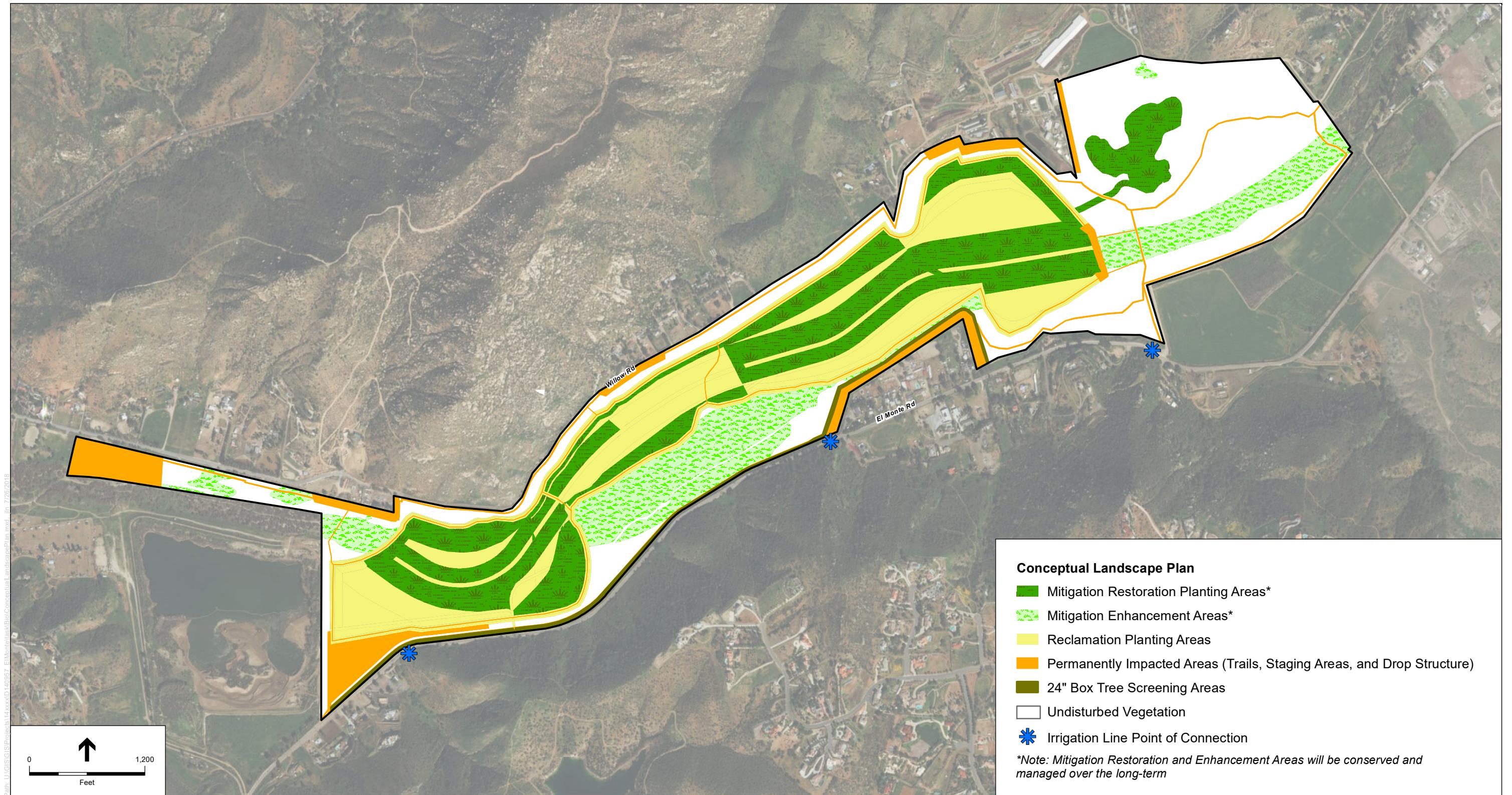


APPENDIX W CONCEPTUAL LANDSCAPE PLAN



Planting Notes:

- Mitigation Restoration and Reclamation Planting Areas Plant Palettes and seed mixes per plans
- 24" box trees - Approximately planted 50' on center
- All Trails - per trails plan

Irrigation Notes:

A temporary irrigation system will be installed to assist with establishment of habitat mitigation planting areas and vegetation (tree) screening areas. Irrigation water points of connection (POCs) from a water pipeline along El Monte Road are provided on this conceptual plan. POCs will include a meter and backflow preventer. The number of POCs and exact locations may be modified during preparation of final plans. A temporary automated overhead spray system will be provided for coverage of habitat mitigation planting and seeding areas. A temporary automated drip or bubbler system will be provided for vegetation screening area trees. During the 5-year post-installation habitat mitigation establishment period, temporary irrigation will be provided for up to three years in each mining phase. And up to five to eight-plus years for vegetation screening areas, until vegetation is established and no longer requires irrigation. Once the mitigation habitat areas are established, the irrigation system components will be removed and recycled or properly disposed of offsite. Mitigation enhancement areas that include removal of nonnative exotic plant species will not be irrigated. In addition, post-mining reclamation (non-mitigation) areas will not be irrigated but the project has the option of providing temporary irrigation during the first two years to assist the reclamation process if needed. Irrigation plans will be prepared in accordance with the County's Water Conservation in Landscaping Ordinance (10427, May 2016). Landscaping and irrigation construction plans (i.e., bid documents) will be submitted to the County as part of the Final Revegetation Plan submittal for approval prior to implementation.

Long-Term Maintenance

Once the 5-year mitigation planting and enhancement areas establishment period is completed in each phase, these conserved areas will be managed over the long-term by a land steward retained by the project proponent. An endowment or other approved financial security will be established to fund long-term management.

Restoration Vegetated Streambed Container Plants				
Species	Common Name	Container Size	Spacing (feet on center)	Density per Acre
<i>Artemisia douglasiana</i>	Douglas' mugwort	1 gallon	6	220
<i>Artemisia palmeri</i>	San Diego sagewort	1 gallon	12	140
<i>Iva hayesiana</i>	San Diego Marsh elder	1 gallon	12	60
<i>Muhlenbergia rigens</i>	Deergrass	1 gallon	8	130
<i>Rosa californica</i>	California rose	1 gallon	6	130
Total				680

Restoration Riparian Forest Container Plants				
Species	Common Name	Container Size	Spacing (feet on center)	Density per Acre
<i>Artemisia douglasiana</i>	Douglas' mugwort	1 gallon	10	100
<i>Artemisia palmeri</i>	San Diego sagewort	1 gallon	12	60
<i>Baccharis salicifoli</i>	Mulefat	1 gallon	14	160
<i>Ericameria palmeri</i> var. <i>palmeri</i>	Palmer's sagewort	1 gallon	25	50
<i>Muhlenbergia rigens</i>	Deergrass	1 gallon	10	82
<i>Platanus racemosa</i>	Western sycamore	5 gallon	60	20
<i>Pluchea sericea</i>	Arrow weed	1 gallon	15	70
<i>Populus fremontii</i>	Fremont cottonwood	5 gallon	40	40
<i>Quercus agrifolia</i>	Coast live oak	5 gallon	60	16
<i>Salix exigua</i>	Sandbar willow	1 gallon	15	50
<i>Salix gooddingii</i>	Black willow	1 gallon	50	16
<i>Salix laevigata</i>	Red willow	1 gallon	20	64
<i>Salix lasiolepis</i>	Arroyo willow	1 gallon	16	92
<i>Sambucus mexicana</i>	Blue elderberry	5 gallon	35	40
<i>Thalictrum fendleri</i> var. <i>polycarpum</i>	Many fruit meadow-rue	1 gallon	30	30
Total				890

Restoration Riparian Scrub Container Plants				
Species	Common Name	Container Size	Spacing (feet on center)	Density per Acre
<i>Artemisia californica</i>	California sagebrush	1 gallon	25	70
<i>Artemisia dracunculus</i>	Tarragon	1 gallon	12	80
<i>Artemisia palmeri</i>	San Diego sagewort	1 gallon	14	110
<i>Baccharis pilularis</i>	Coyote brush	1 gallon	35	50
<i>Baccharis salicifolia</i>	Mulefat	1 gallon	10	270
<i>Ericameria palmeri</i> var. <i>palmeri</i>	Palmer's sagewort	1 gallon	30	80
<i>Isocoma menziesii</i> var. <i>menziesii</i>	Coastal goldenbush	1 gallon	35	50
<i>Pluchea sericea</i>	Arrow weed	1 gallon	20	50
<i>Salix exigua</i>	Sandbar willow	1 gallon	20	40
<i>Salix lasiolepis</i>	Arroyo willow	1 gallon	35	30
<i>Sambucus mexicana</i>	Blue elderberry	5 gallon	40	60
Total				890

Restoration Coastal Sage Scrub Container Plants				
Species	Common Name	Container Size	Spacing (feet on center)	Density per Acre
<i>Artemisia californica</i>	California sagebrush	1 gallon	10	235
<i>Eriogonum fasciculatum</i>	California buckwheat	1 gallon	30	30
<i>Isocoma menziesii</i> var. <i>menziesii</i>	Coastal goldenbush	1 gallon	20	60
<i>Malacothamnus fasciculatus</i>	Bush mallow	1 gallon	30	30
<i>Malosma laurina</i>	Laurel sumac	1 gallon	50	15
<i>Mimulus aurantiacus</i>	Bush monkeyflower	1 gallon	30	40
<i>Stipa lepidia</i>	Foothill needlegrass	1 gallon	12	160
<i>Stipa pulchra</i>	Purple needlegrass	1 gallon	12	110
Total				680

Restoration Vegetated Streambed Seed Mix				
Species	Common Name	Lbs per Acre	Min. Percent Purity/ Germination	Lbs Pure Live Seed (PLS) per Acre
<i>Ambrosia psilostachya</i>	Western ragweed	5.0	45/45	1.01
<i>Artemisia douglasiana</i>	Douglas' mugwort	6.0	15/40	0.36
<i>Artemisia palmeri</i>	San Diego sagewort	4.0	20/50	0.40
<i>Iva hayesiana</i>	San Diego Marsh elder	4.0	30/30	0.36
<i>Juncus bufonius</i>	Toad rush	3.0	95/60	1.71
Total		22		3.84

Restoration Riparian Forest Seed Mix				
Species	Common Name	Lbs per Acre	Min. Percent Purity/ Germination	Lbs Pure Live Seed (PLS) per Acre
<i>Ambrosia psilostachya</i>	Western ragweed	4.0	45/45	0.81
<i>Artemisia californica</i>	California sagebrush	3.0	30/60	0.54
<i>Artemisia douglasiana</i>	Douglas' mugwort	4.0	15/40	0.24
<i>Artemisia palmeri</i>	San Diego sagewort	3.0	20/50	0.30
<i>Baccharis pilularis</i>	Coyote brush	3.0	10/50	0.15
<i>Camissoniopsis bistorta</i>	California sun cup	1.0	90/80	0.72
<i>Isocoma menziesii</i> var. <i>menziesii</i>	Coastal goldenbush	3.0	18/40	0.22
<i>Lupinus hirsutissimus</i>	Stinging lupine	1.0	98/75	0.74
<i>Oenothera elata</i> ssp. <i>elata</i>	Tall evening primrose	1.0	98/84	0.82
<i>Phacelia cicutaria</i>	Catterpillar phacelia	1.0	98/90	0.88
<i>Pluchea sericea</i>	Arrowweed	5.0	7/20	0.07
<i>Rosa californica</i>	California rose	1.0	85/53	0.45
Total		30.0		5.94

Restoration Riparian Scrub Seed Mix				
Species	Common Name	Lbs per Acre	Min. Percent Purity/ Germination	Lbs Pure Live Seed (PLS) per Acre
<i>Acmispon glaber</i>	Deerweed	3.0	95/80	2.28
<i>Amsinckia menziesii</i> var. <i>intermedia</i>	Fiddleneck	3.0	45/65	0.87
<i>Artemisia californica</i>	California sagebrush	4.0	30/60	0.72
<i>Artemisia dracunculus</i>	Tarragon	3.0	10/50	0.15
<i>Baccharis pilularis</i>	Coyote brush	2.0	10/50	0.10
<i>Camissoniopsis bistorta</i>	California sun cup	2.0	90/80	1.44
<i>Heterotheca grandiflora</i>	Telegraph weed	2.0	60/55	0.66
<i>Isocoma menziesii</i> var. <i>menziesii</i>	Coastal goldenbush	3.0	18/40	0.21
<i>Lupinus bicolor</i>	Dove lupine	1.0	98/85	0.83
<i>Lupinus hirsutissimus</i>	Stinging lupine	1.0	98/75	0.74
<i>Oenothera elata</i> ssp. <i>Hookeri</i>	Evening primrose	1.0	98/84	0.82
<i>Phacelia cicutara</i>	Caterpillar phacelia	1.0	98/90	0.88
<i>Pseudognaphalium beneolens</i>	Fragrant everlasting	3.0	5/45	0.06
<i>Pseudognaphalium biolettii</i>	Bicolor cudweed	3.0	4/45	0.06
Total		32.0		9.82

Restoration Coastal Sage Scrub Seed Mix				
Species	Common Name	Lbs per Acre	Min. Percent Purity/ Germination	Lbs Pure Live Seed (PLS) per Acre
<i>Acmispon glaber</i>	Deerweed	5.0	95/80	3.80
<i>Amsinckia menziesii</i> var. <i>intermedia</i>	Fiddleneck	2.0	45/65	0.58
<i>Artemisia californica</i>	California sagebrush	5.0	30/60	0.90
<i>Camissoniopsis bisorta</i>	California suncup	2.0	90/80	1.44
<i>Chaenactis glabriuscula</i>	Yellow pincushion	2.0	15/55	0.16
<i>Croton californicus</i>	California croton	2.0	90/40	0.72
<i>Eschscholzia californica</i>	California poppy	1.0	98/80	0.78
<i>Heterotheca grandiflora</i>	Telegraph weed	2.0	60/55	0.66
<i>Lupinus bicolor</i>	Dove lupine	3.0	98/85	2.49
<i>Pseudognaphalium biolettii</i>	Bicolor cudweed	3.0	4/45	0.06
<i>Pseudognaphalium californicum</i>	California everlasting	3.0	5/50	0.06
<i>Sisyrinchium bellum</i>	Blue-eyed grass	1.0	98/80	0.78
<i>Mimulus aurantiacus</i>	Bush monkeyflower	2.0	4/70	0.06
<i>Stipa lepidia</i>	Foothill needlegrass	3.0	90/71	1.92
<i>Stipa pulchra</i>	Purple needlegrass	2.0	90/75	1.36
<i>Vulpia microstachys</i>	Small fescue	4.0	90/80	2.88
Total		42.0		18.65

Screening Trees and Container Plants			
Species	Common Name	Container Size	Spacing (feet on center)
<i>Quercus agrifolia</i>	Coast Live Oak	24" box	50
<i>Populus fremontii</i>	Freemont Cottonwood	15 gallon	20
<i>Platanus racemosa</i>	Western Sycamore	15 gallon	50
<i>Heteromeles arbutifolia</i>	Toyon	15 gallon	20
<i>Sambucus mexicana</i>	Blue elderberry	15 gallon	20
<i>Malacothamnus fasciculatus</i>	Bush mallow	15 gallon	20