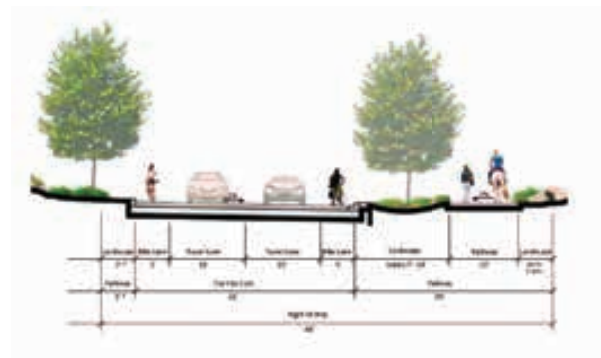


PROPOSED

SECTION B1

2.2E MODIFIED LIGHT COLLECTOR WITH NO MEDIAN
NOT TO SCALE

* WIDTH INCREASES BY 12' AS REQUIRED FOR A
RIGHT TURN LANE AT THE INTERSECTION WITH
DEER SPRINGS ROAD.



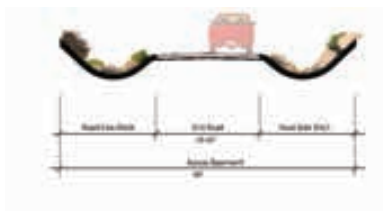
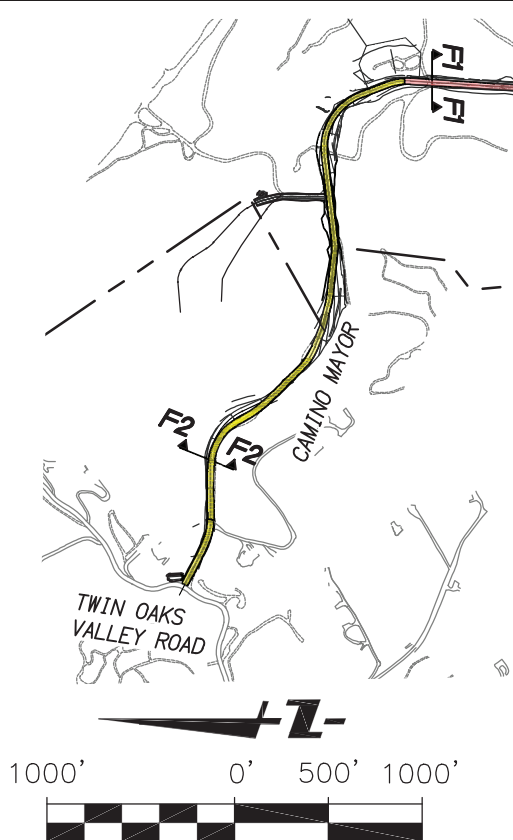
PROPOSED

SECTION B2

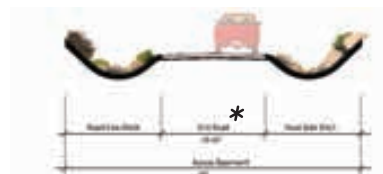
2.2F MODIFIED LIGHT COLLECTOR WITH REDUCED SHOULDER
NOT TO SCALE

FIGURE 1-26
Sarver Lane

INTENTIONALLY LEFT BLANK

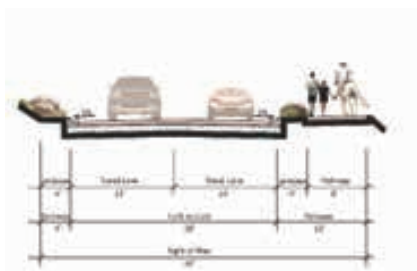


EXISTING



* THE SOUTHERLY 375' OF CAMINO MAYOR IS CURRENTLY PAVED 14' TO 20' IN WIDTH

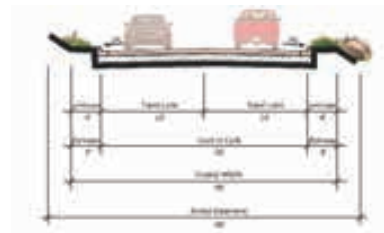
EXISTING



PROPOSED

SECTION F1

NOT TO SCALE



PROPOSED

SECTION F2

NOT TO SCALE

FIGURE 1-27
Camino Mayor

INTENTIONALLY LEFT BLANK



SOURCE: SCHMIDT DESIGN 2017

FIGURE 1-28
Deer Springs Road–Option A

Newland Sierra Environmental Impact Report

INTENTIONALLY LEFT BLANK



SOURCE: SCHMIDT DESIGN 2017

FIGURE 1-29
Deer Springs Road–Option B

INTENTIONALLY LEFT BLANK

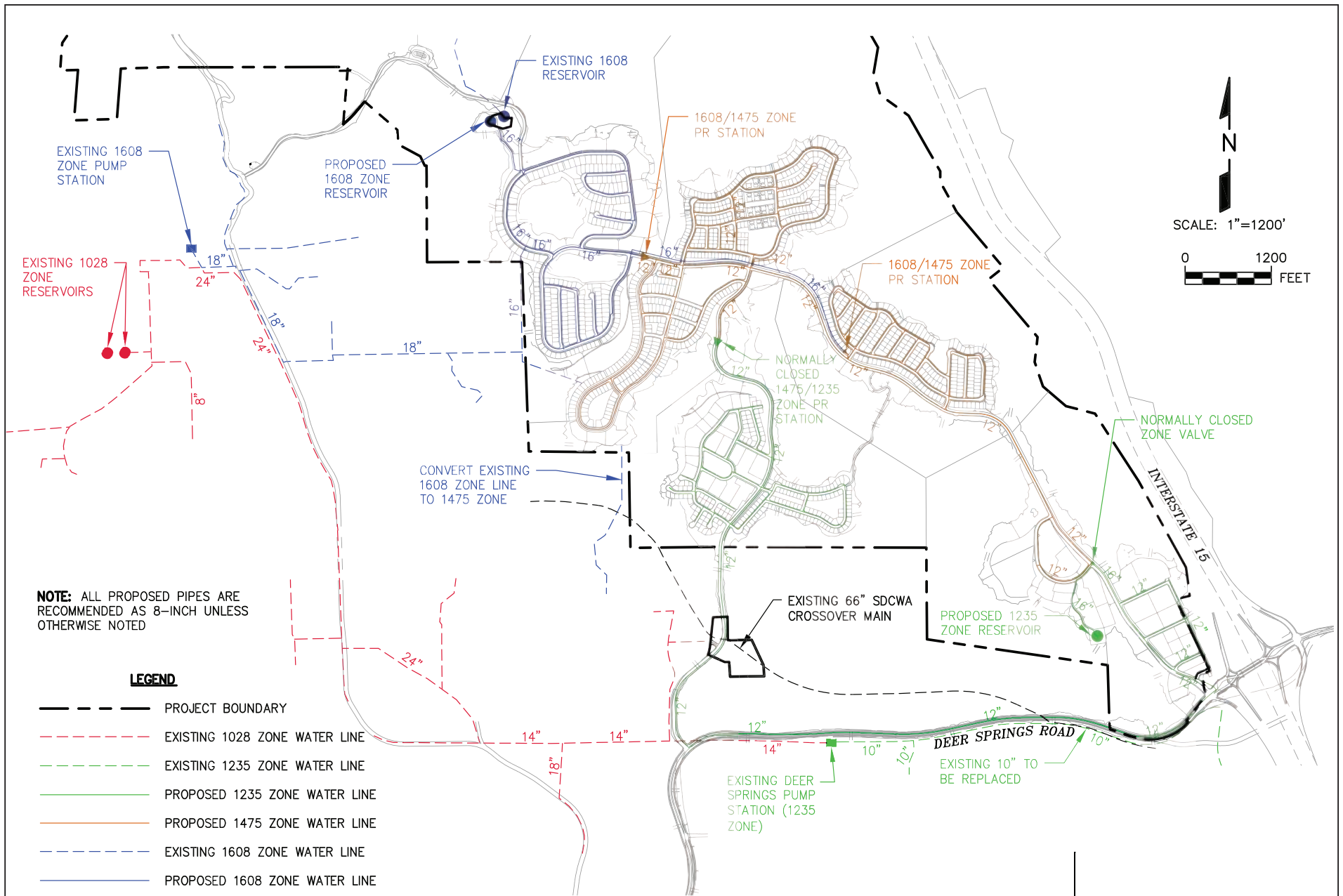


FIGURE 1-30
Water Supply

INTENTIONALLY LEFT BLANK

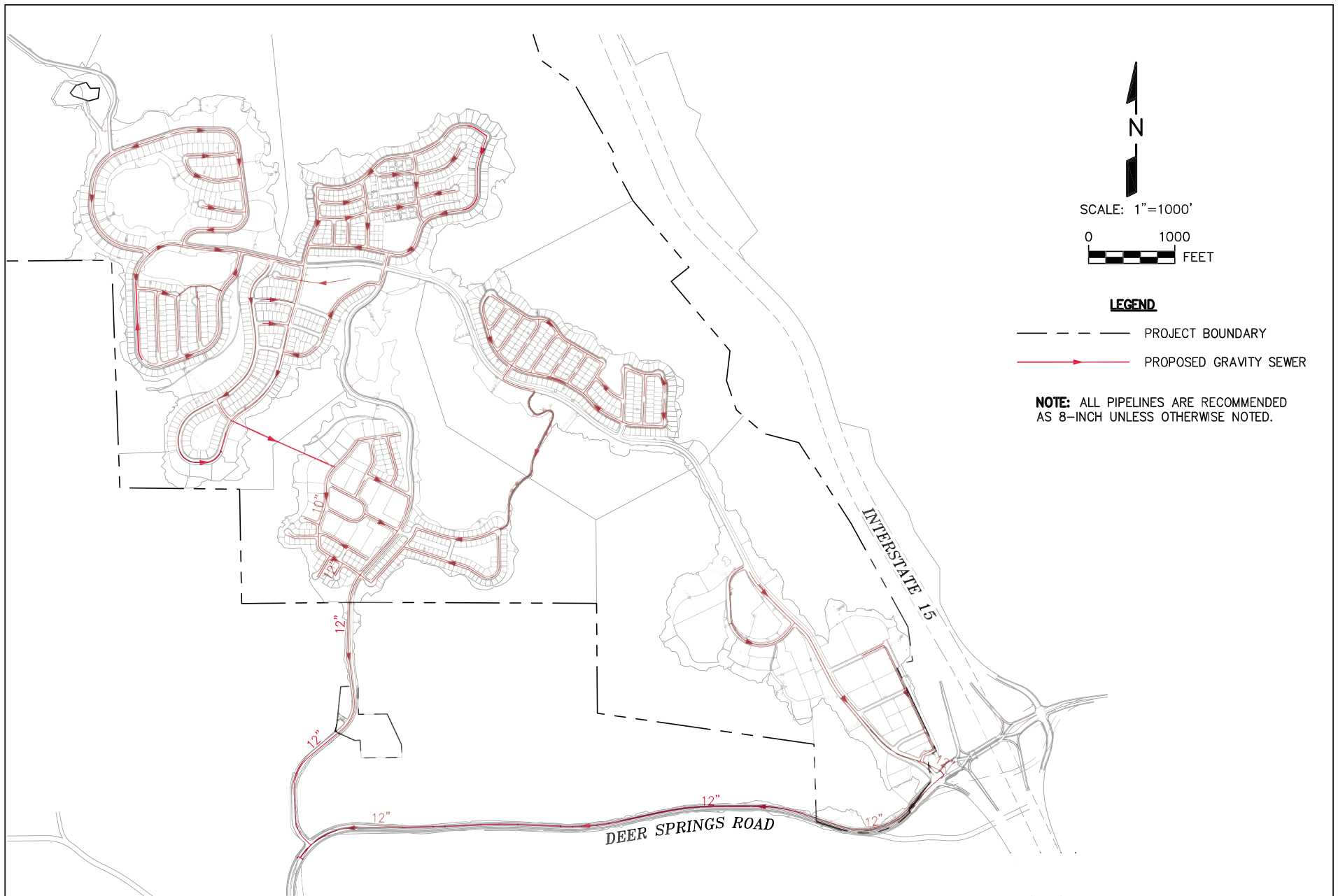
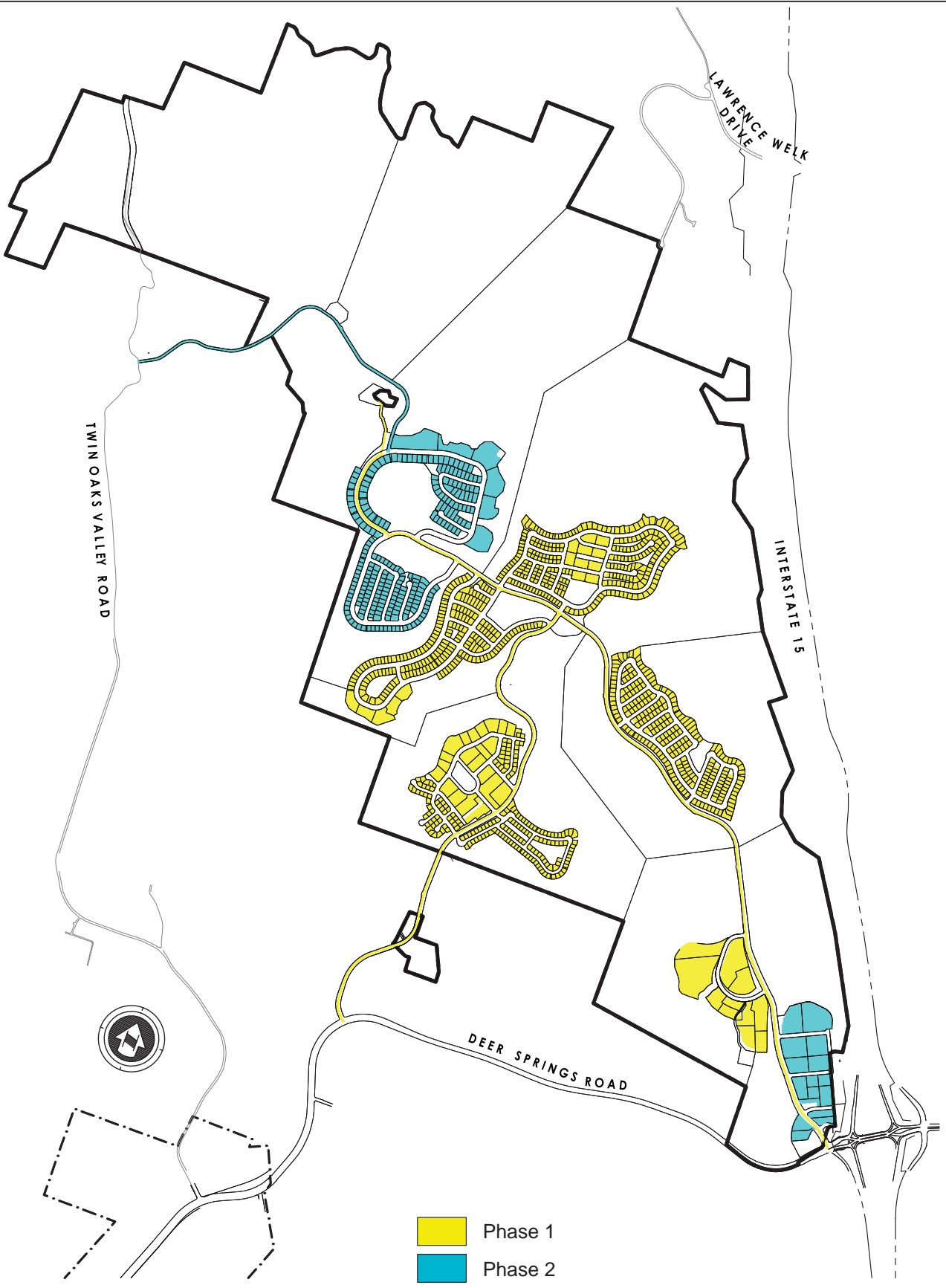


FIGURE 1-31
Sewer Collection System

INTENTIONALLY LEFT BLANK



SOURCE: FUSCOE 2016

FIGURE 1-32
Phasing Plan

INTENTIONALLY LEFT BLANK