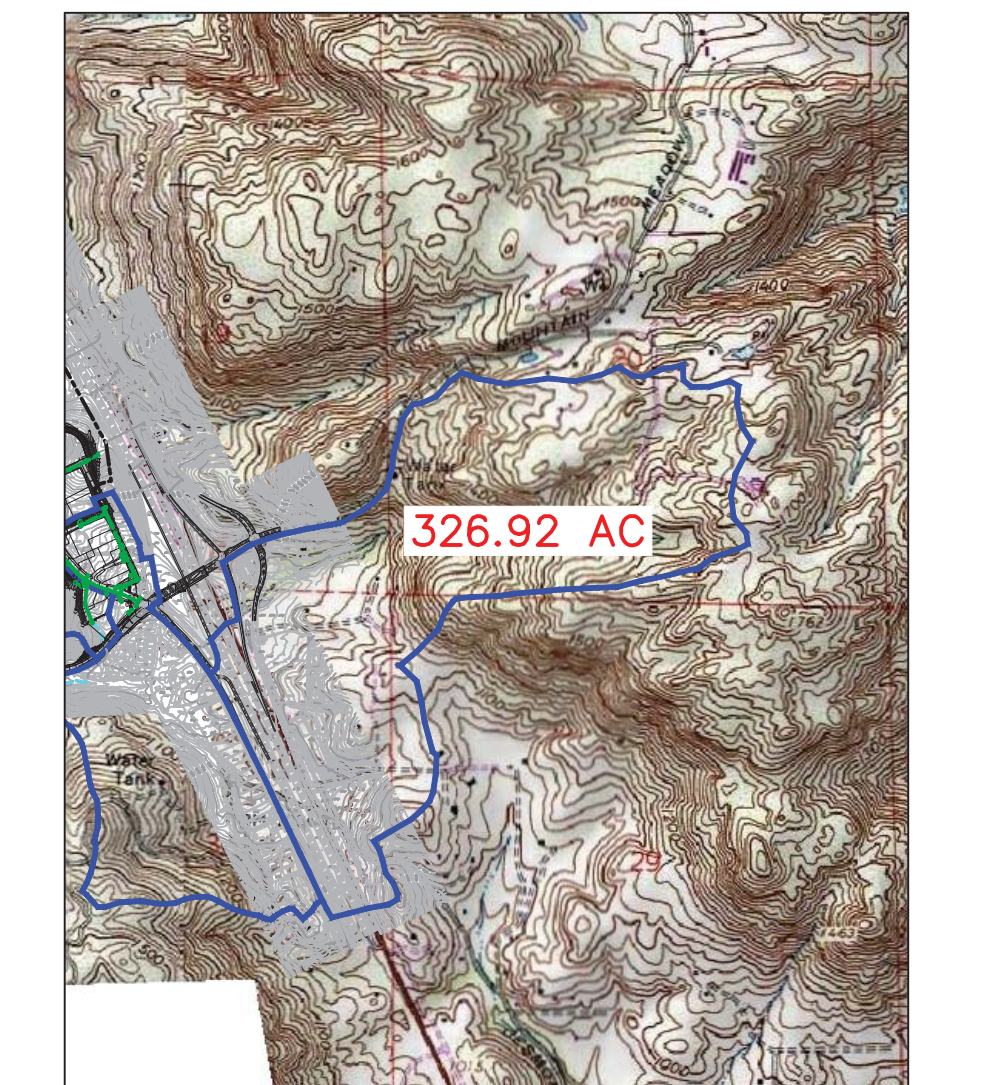
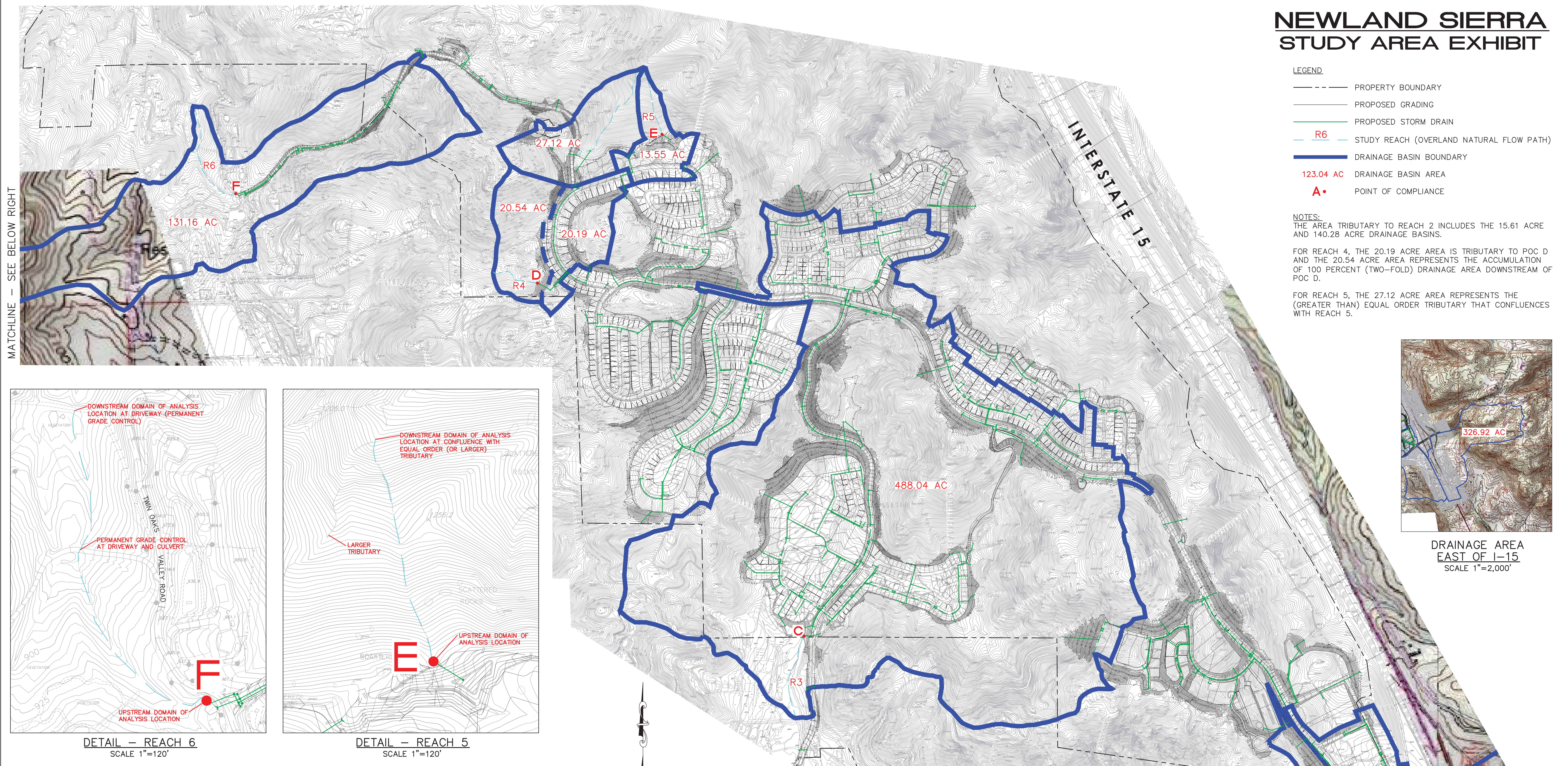


# NEWLAND SIERRA STUDY AREA EXHIBIT

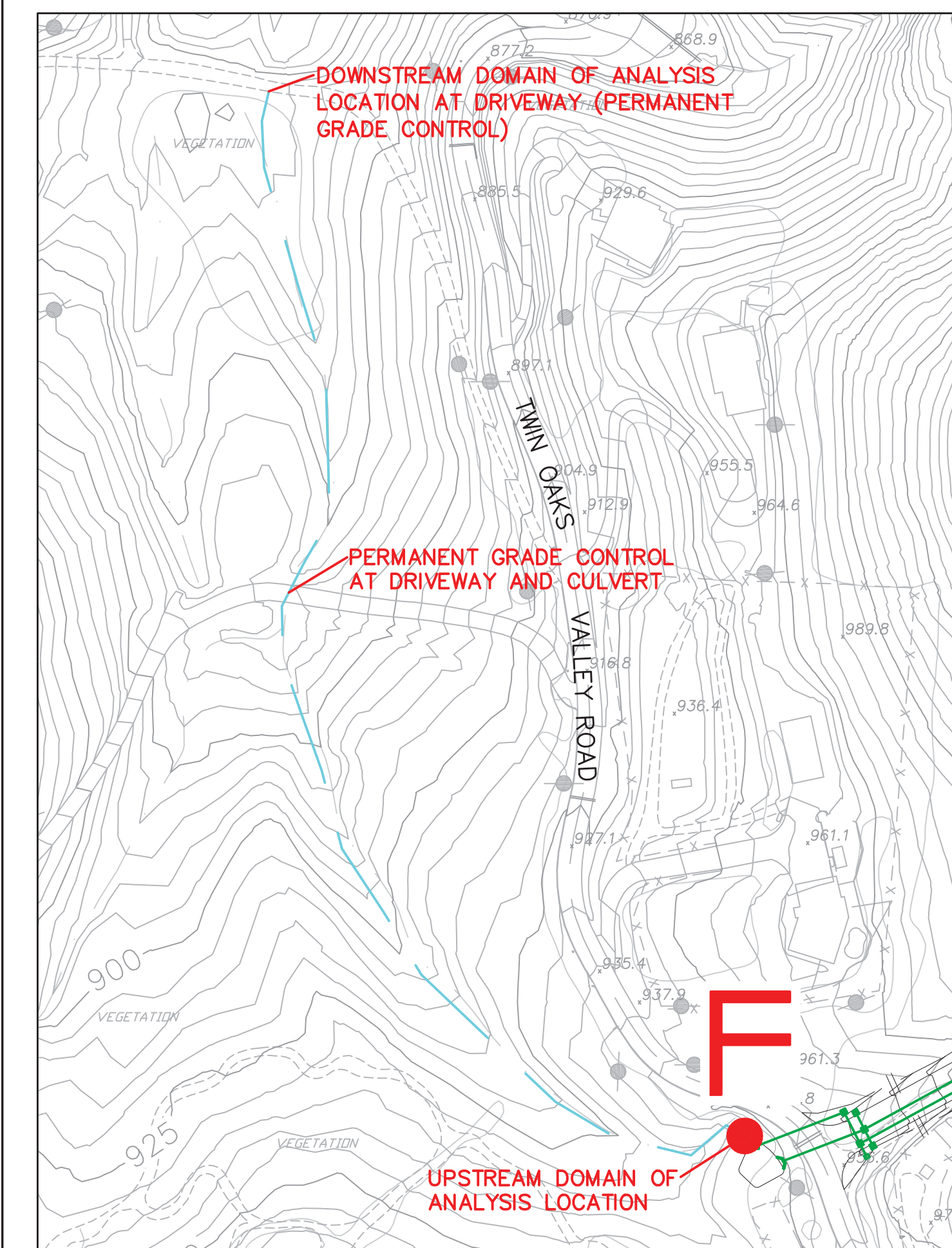
- LEGEND**
- PROPERTY BOUNDARY
  - PROPOSED GRADING
  - PROPOSED STORM DRAIN
  - R6 STUDY REACH (OVERLAND NATURAL FLOW PATH)
  - DRAINAGE BASIN BOUNDARY
  - 123.04 AC DRAINAGE BASIN AREA
  - A• POINT OF COMPLIANCE

**NOTES:**  
 THE AREA TRIBUTARY TO REACH 2 INCLUDES THE 15.61 ACRE AND 140.28 ACRE DRAINAGE BASINS.  
 FOR REACH 4, THE 20.19 ACRE AREA IS TRIBUTARY TO POC D AND THE 20.54 ACRE AREA REPRESENTS THE ACCUMULATION OF 100 PERCENT (TWO-FOLD) DRAINAGE AREA DOWNSTREAM OF POC D.  
 FOR REACH 5, THE 27.12 ACRE AREA REPRESENTS THE (GREATER THAN) EQUAL ORDER TRIBUTARY THAT CONFLUENCES WITH REACH 5.

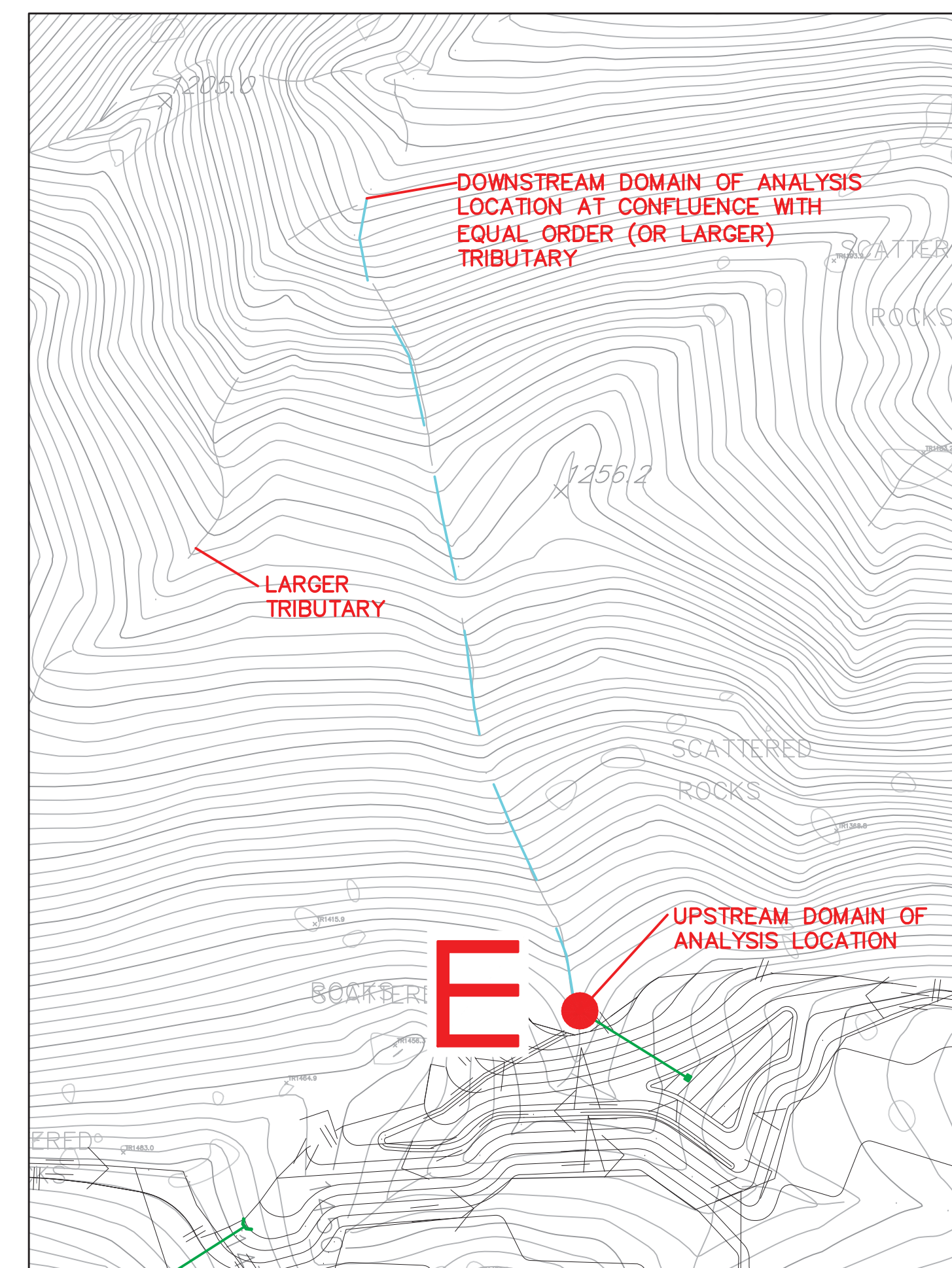
MATCHLINE - SEE BELOW RIGHT



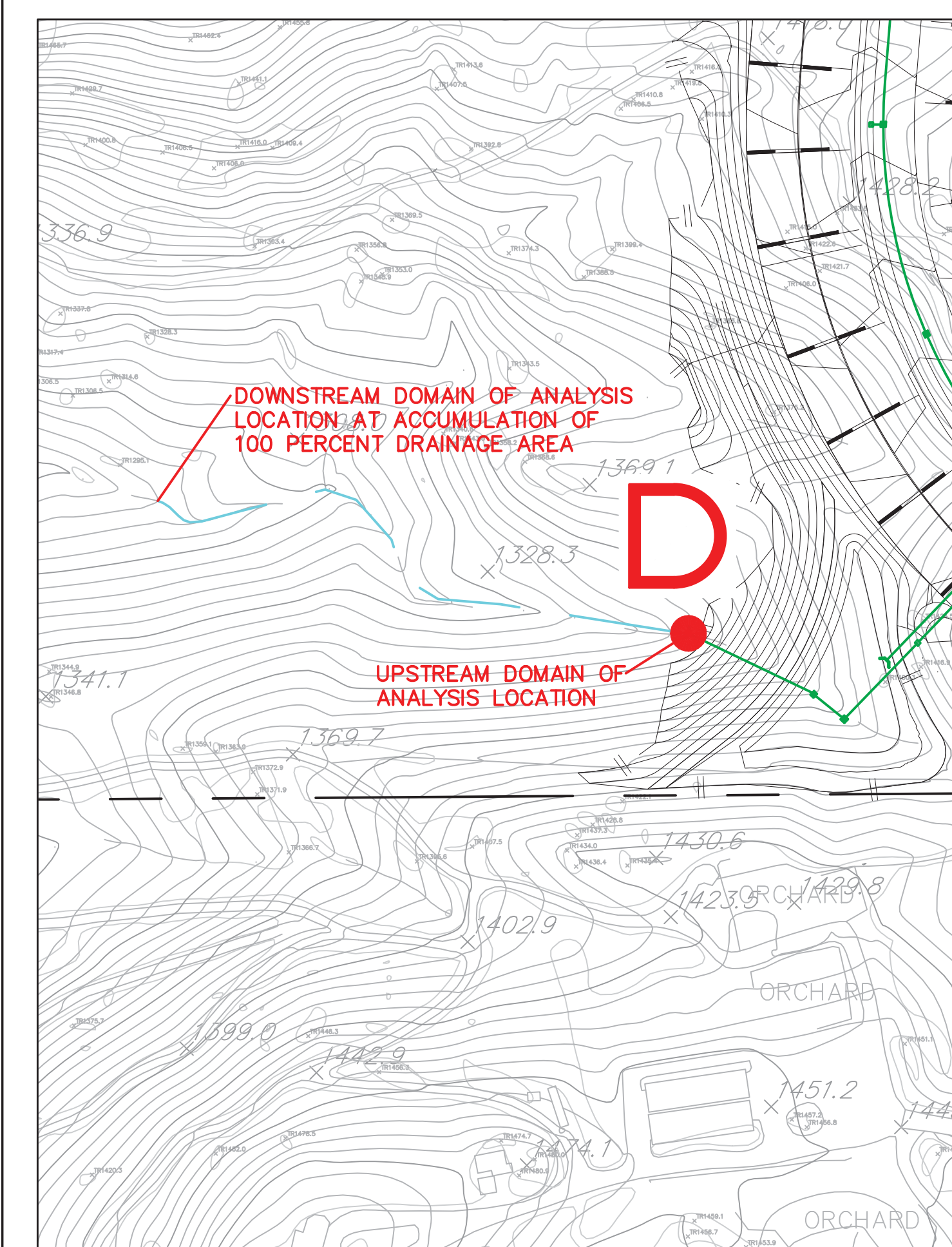
DRAINAGE AREA  
EAST OF I-15  
SCALE 1"=2,000'



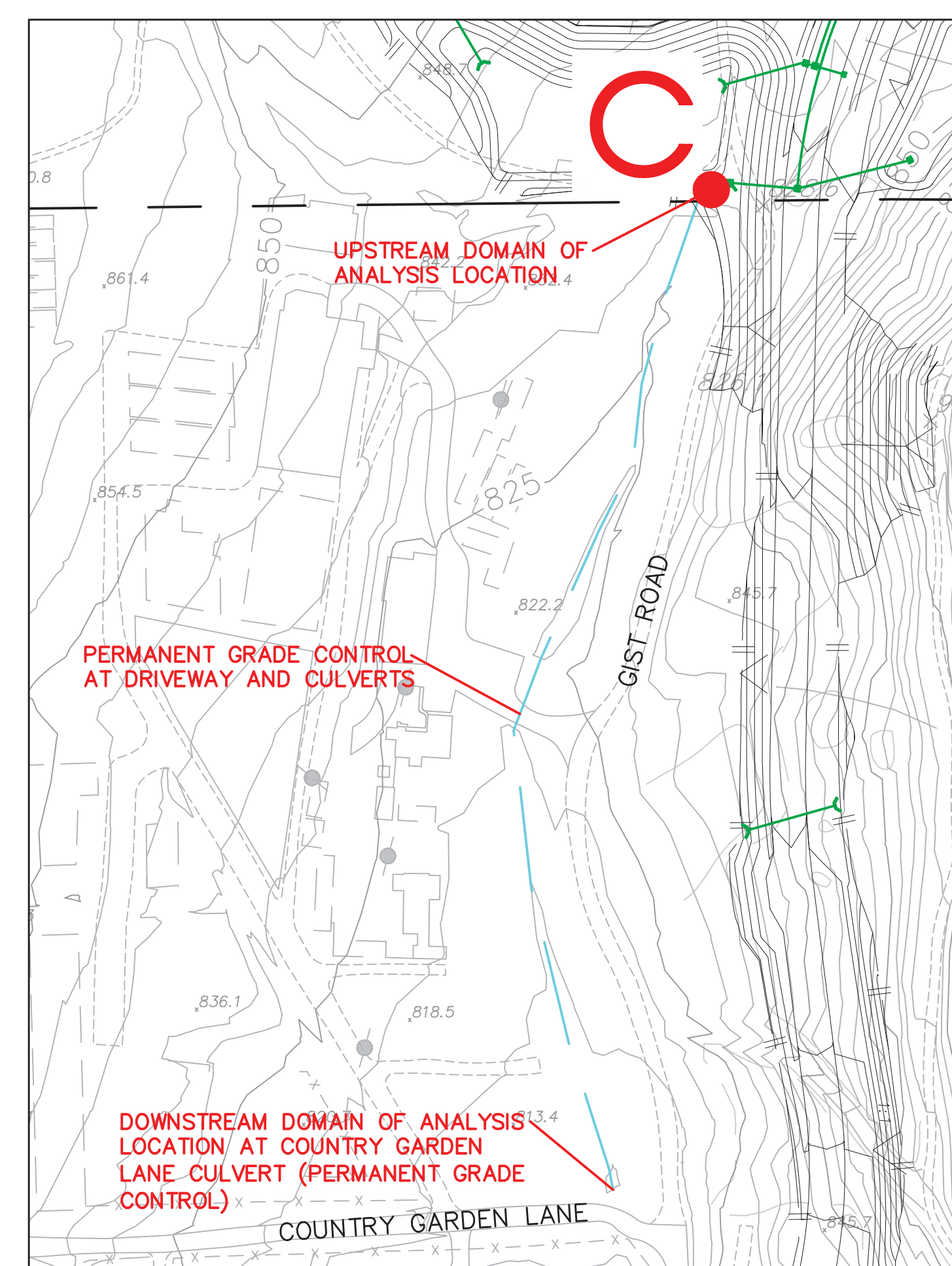
DETAIL - REACH 6  
SCALE 1"=120'



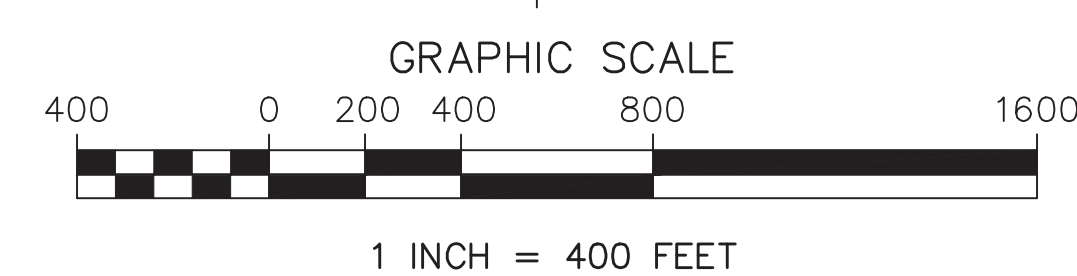
DETAIL - REACH 5  
SCALE 1"=120'



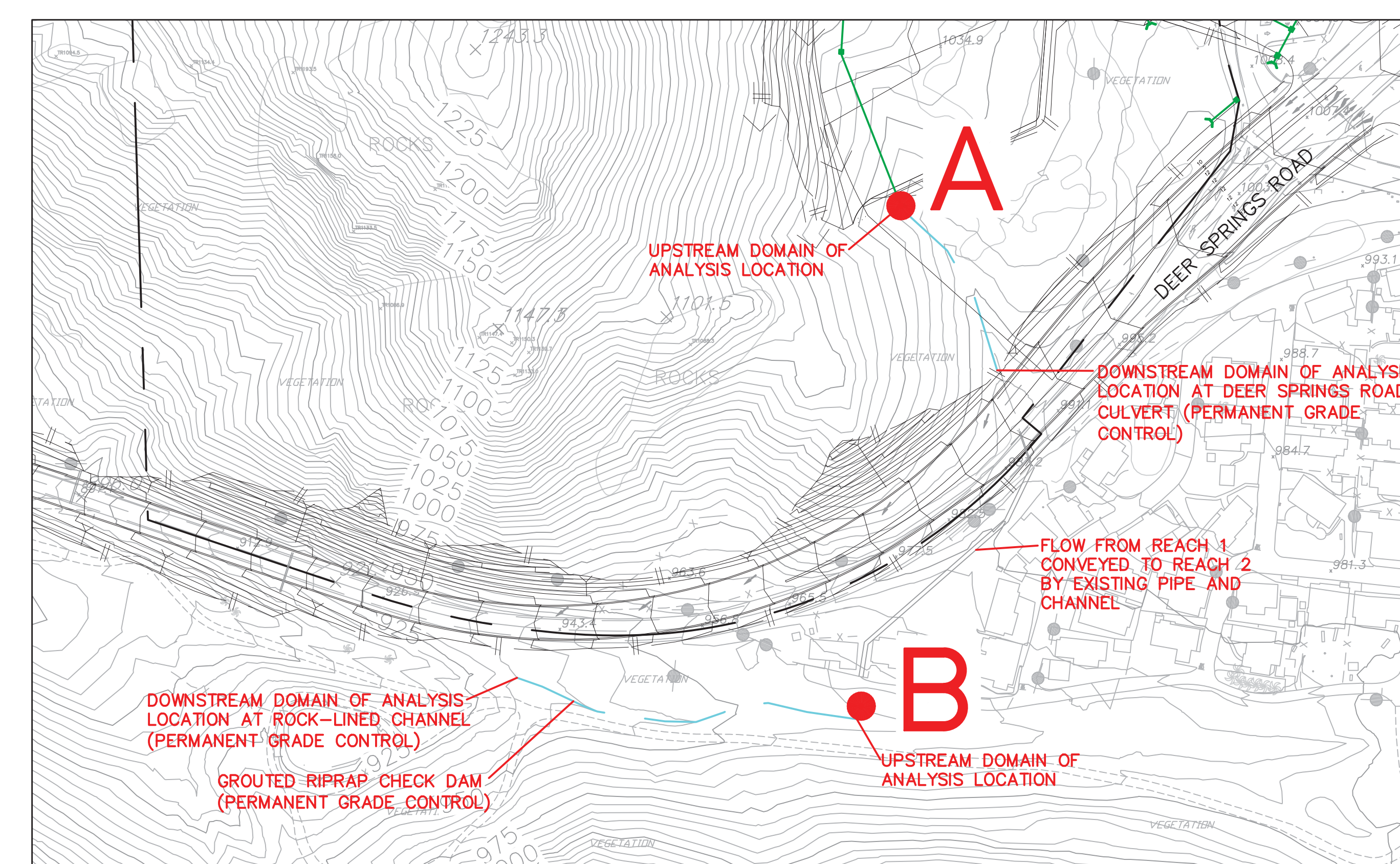
DETAIL - REACH 4  
SCALE 1"=120'



DETAIL - REACH 3  
SCALE 1"=120'



PLAN - STUDY AREA  
AND DRAINAGE BASINS  
SCALE 1"=400'



DETAIL - REACH 1 AND 2  
SCALE 1"=120'



PLAN - NW CORNER  
SCALE 1"=400'

MATCHLINE - SEE ABOVE LEFT

MATCHLINE - SEE ABOVE FOR EASTERLY DRAINAGE AREA (326.92 AC)