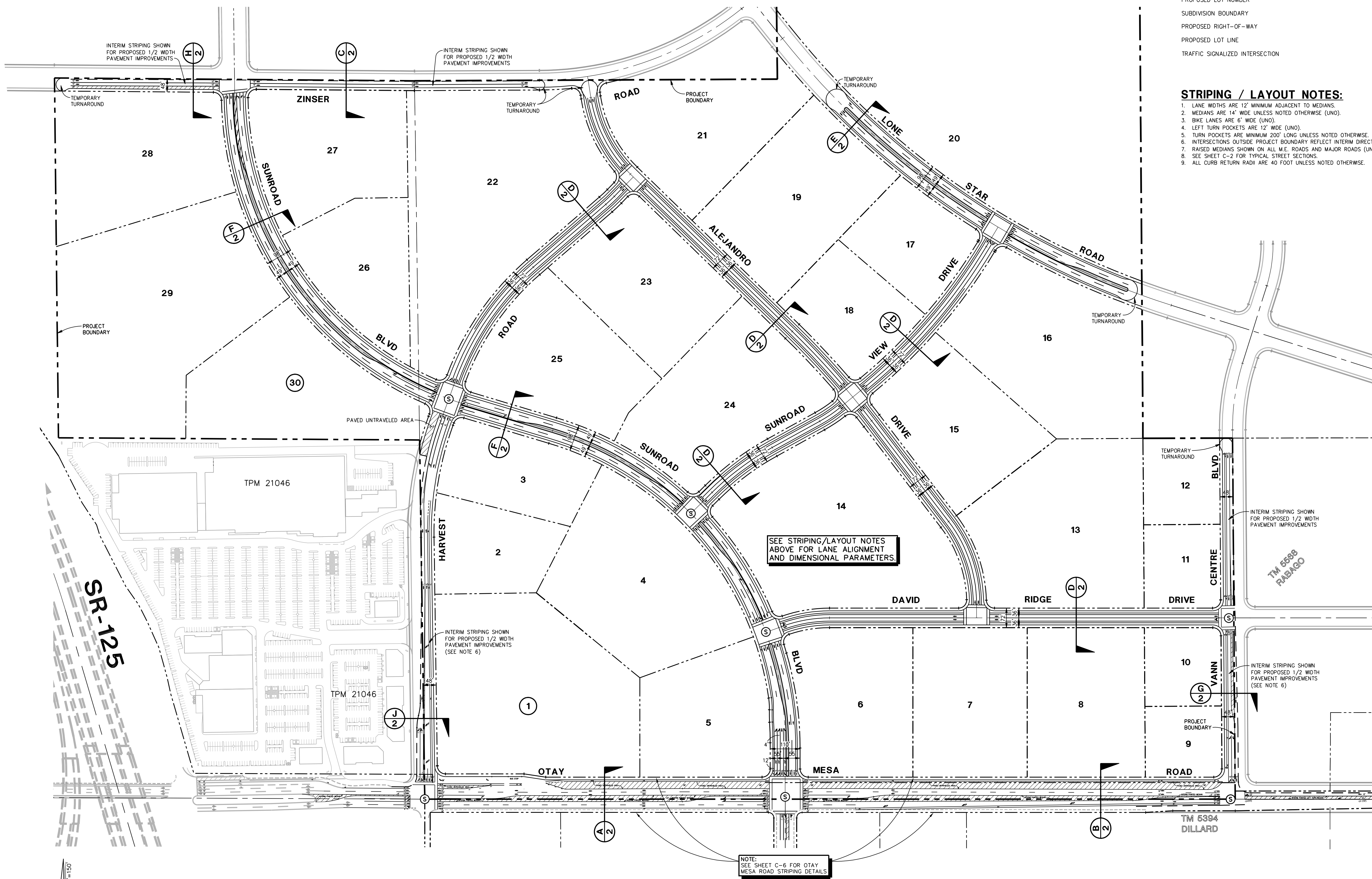


# CONCEPTUAL ON-SITE STRIPING PLAN



### LEGEND

DESCRIPTION	SYMBOL
PROPOSED LOT NUMBER	① THRU ⑩
SUBDIVISION BOUNDARY	---
PROPOSED RIGHT-OF-WAY	---
PROPOSED LOT LINE	---
TRAFFIC SIGNALIZED INTERSECTION	Ⓢ

### STRIPING / LAYOUT NOTES:

1. LANE WIDTHS ARE 12' MINIMUM ADJACENT TO MEDIANS.
2. MEDIANS ARE 14' WIDE UNLESS NOTED OTHERWISE (LNO).
3. BIKE LANES ARE 6' WIDE (LNO).
4. LEFT TURN POCKETS ARE 12' WIDE (LNO).
5. TURN POCKETS ARE MINIMUM 200' LONG UNLESS NOTED OTHERWISE.
6. INTERSECTIONS OUTSIDE PROJECT BOUNDARY REFLECT INTERIM DIRECT IMPACT TRAFFIC MITIGATION.
7. RAISED MEDIANS SHOWN ON ALL M.E. ROADS AND MAJOR ROADS (LNO); STRIPED FOR ALL OTHER ROADS.
8. SEE SHEET C-2 FOR TYPICAL STREET SECTIONS.
9. ALL CURB RETURN RADII ARE 40 FOOT UNLESS NOTED OTHERWISE.

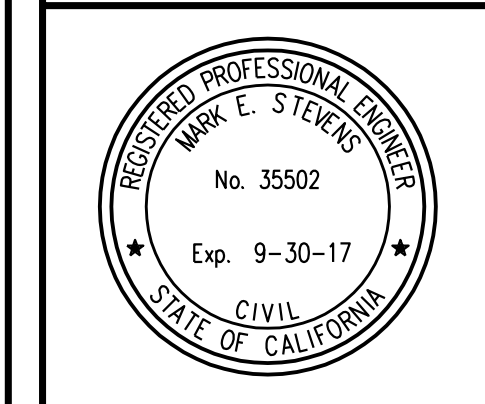
SEE STRIPING/LAYOUT NOTES ABOVE FOR LANE ALIGNMENT AND DIMENSIONAL PARAMETERS.

NOTE: SEE SHEET C-6 FOR OTAY MESA ROAD STRIPING DETAILS.

REVISIONS

	BY

STEVENS CRESTO ENGINEERING, INC.  
 CIVIL ENGINEERS - PLANNERS - LAND SURVEYORS  
 858.694.5660  
 858.694.5660  
 SUITE 200  
 9445 CRENSHAW DRIVE  
 SAN DIEGO, CA 92123-1352  
 www.sceeng.com



## CONCEPTUAL ON-SITE STRIPING PLAN

**COUNTY OF SAN DIEGO TRACT 5607  
 OTAY 250  
 COUNTY OF SAN DIEGO, CALIFORNIA**

Date:	JULY 17, 2015
Scale:	AS SHOWN
Job:	14009.01
Sheet:	<b>C-5</b>
5 of 17 Sheets	

