

Project Area

Development Footprint

Otay Ranch RMP Preserve

Conserved Open Space

Non-graded LDA

Special-status Plants

Dunn's mariposa lily

Gander's pitcher sage

Munz's sage

Otay manzanita

Robinson's pepper-grass

San Diego County needle grass

San Diego County viguiera

San Diego barrel cactus

San Diego goldenstar

San Diego marsh-elder

San Diego sagewort

San Miguel calamint

ashy spike-moss

delicate clarkia

golden-rayed pentachaeta

southwestern spiny rush

western dichondra

Special-status Wildlife

Bird=B-CAGN=Coastal California gnatcatcher

Bird=B-HOLA=California horned lark

Bird=B-LEOW=Long-eared owl

Bird=B-RCSP=Southern California rufous-crowned sparrow

Reptile=R-ROBO=Rosy boa

San Diego Fairy Shrimp (*Branchinecta sandiegonensis*)

Vegetation Communities

CAM=Cismontane Alkali Marsh

CC=Chamise Chaparral

CSS=Diegan Coastal Sage Scrub

DEV=Developed

DH=Disturbed Habitat

EUC=Eucalyptus Woodland

MFS=Mulefat Scrub

NNG=Non-Native Grassland

ORF=Oak Riparian Forest

OW=Open Water

SMX=Southern Mixed Chaparral

SWS=Southern Willow Scrub

dCSS=disturbed Coastal Sage Scrub

Jurisdictional Delineation

ACOE/RWQCB/CDFW Waters or Streambed

ACOE/RWQCB/CDFW Wetlands or Riparian Habitat

Data Stations

DUDEK

SOURCE: Hunsaker 2017

Otay Ranch Village 14 and Planning Areas 16/19 - Preserve Status Report

FIGURE 2-1
Biological Resources - Legend

INTENTIONALLY LEFT BLANK

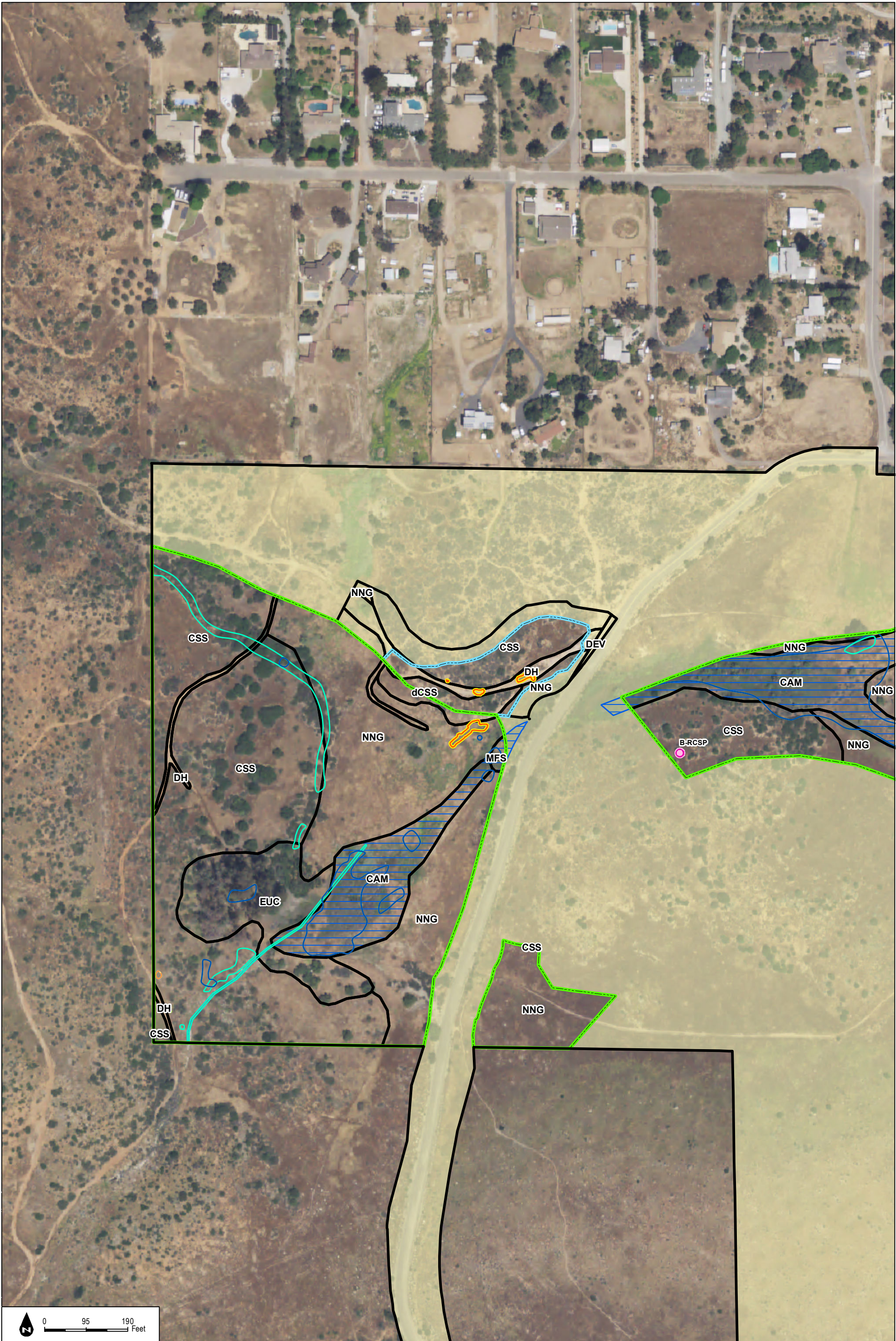
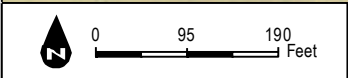
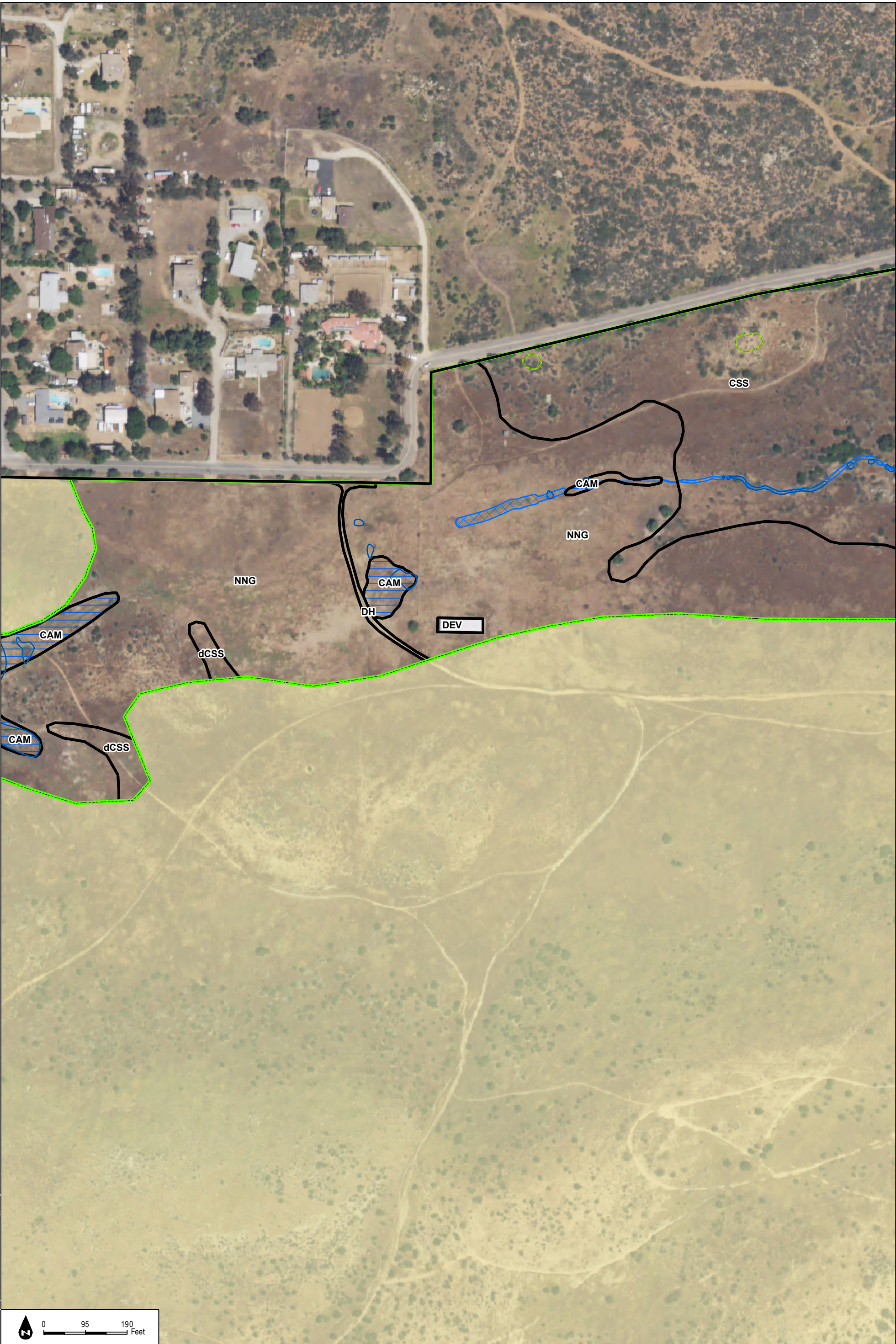


FIGURE 2-1A
Biological Resources

INTENTIONALLY LEFT BLANK



INTENTIONALLY LEFT BLANK

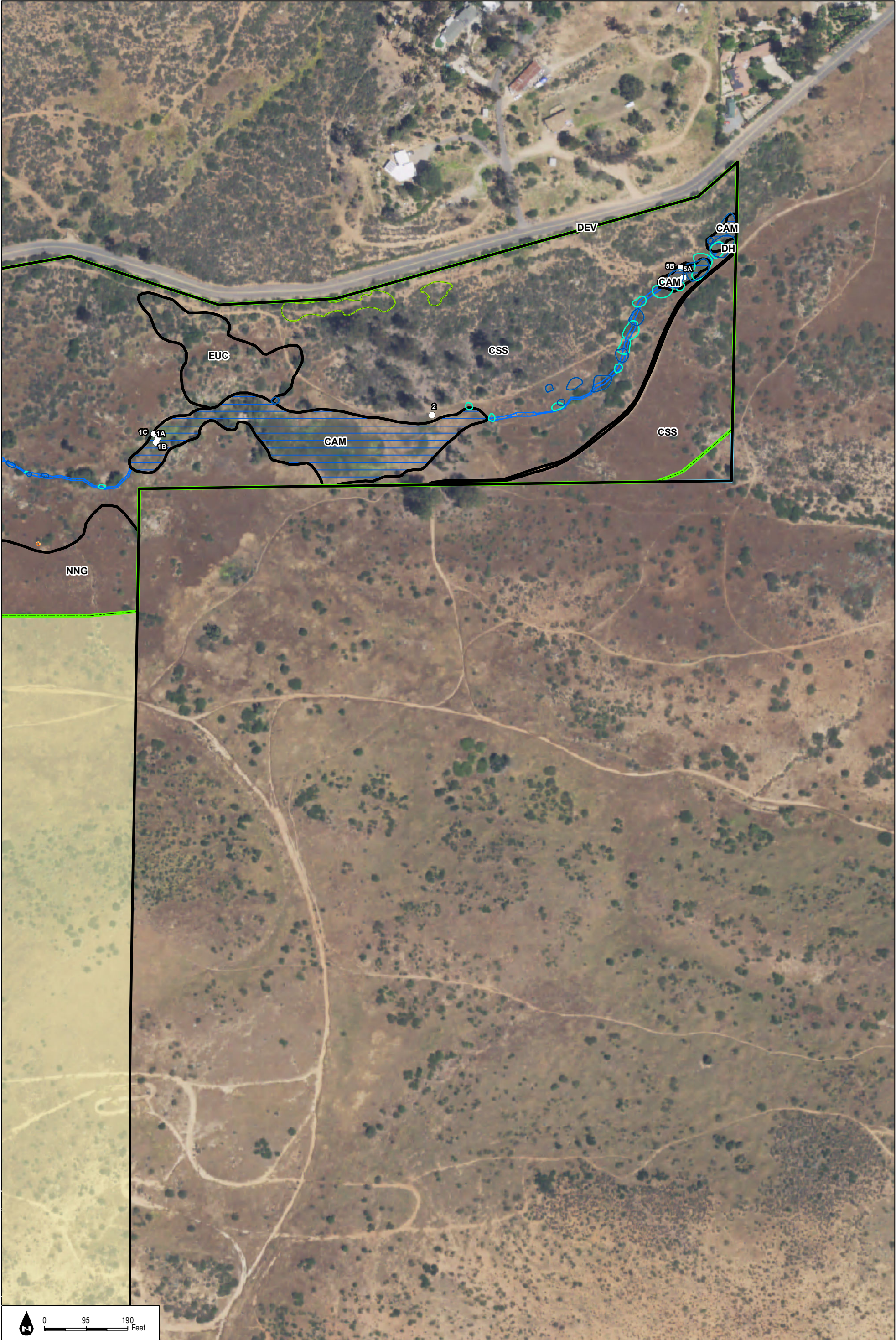


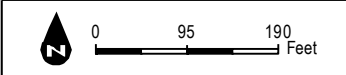
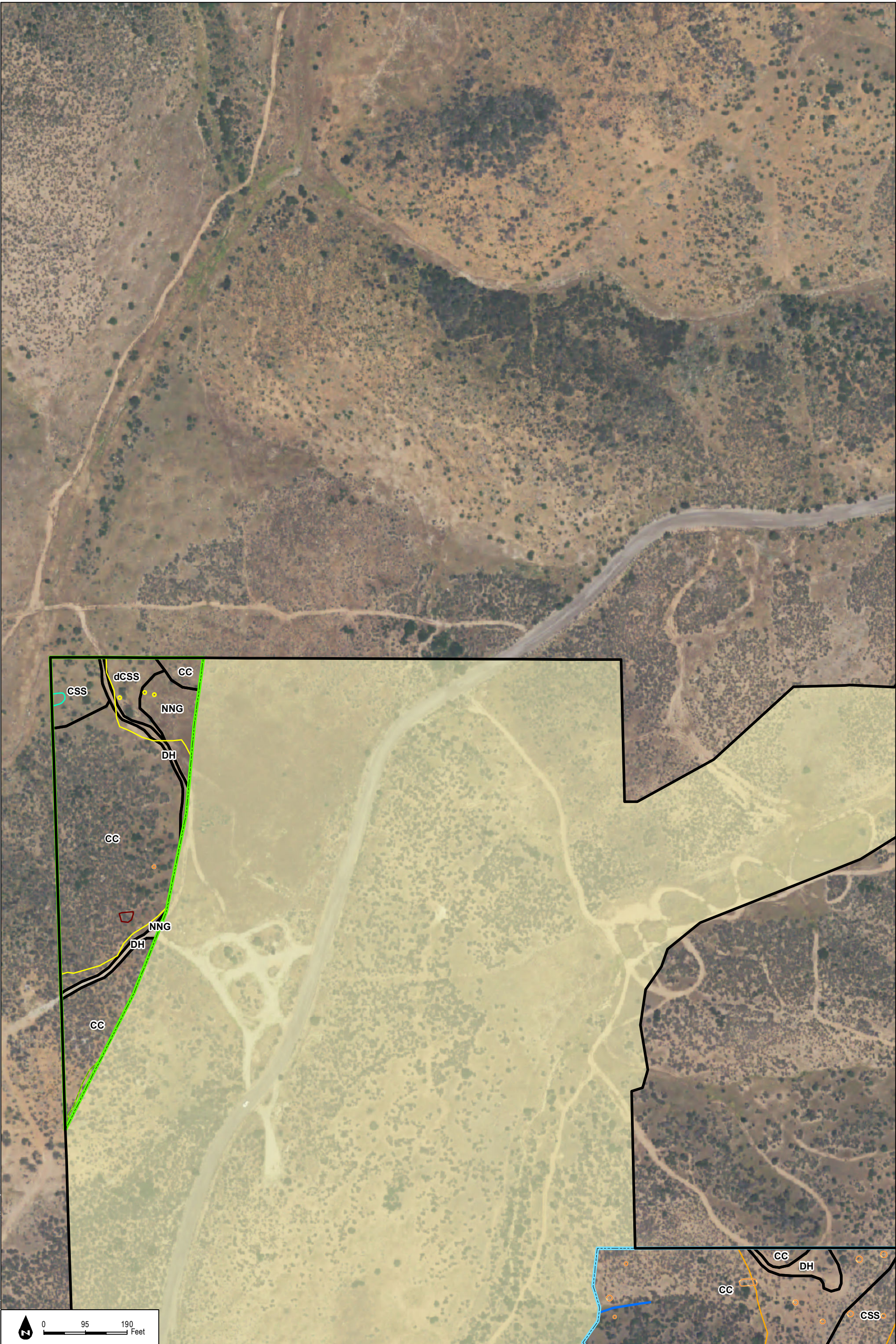
FIGURE 2-1C
Biological Resources

SOURCE: NAIP 2016; Hunsaker 2017

Otay Ranch Village 14 and Planning Areas 16/19 - Preserve Status Report

DUDEK

INTENTIONALLY LEFT BLANK



INTENTIONALLY LEFT BLANK

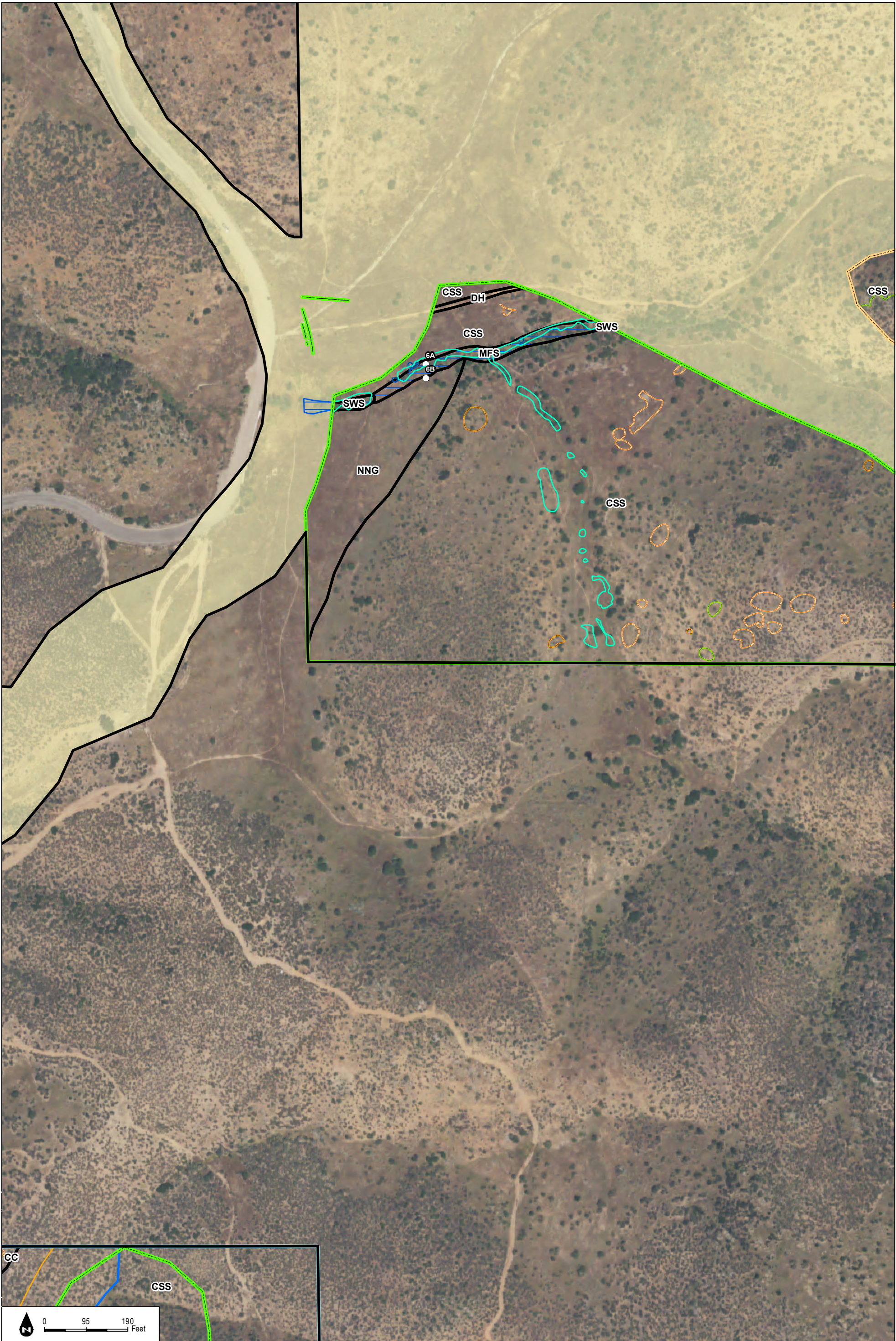


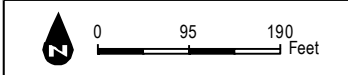
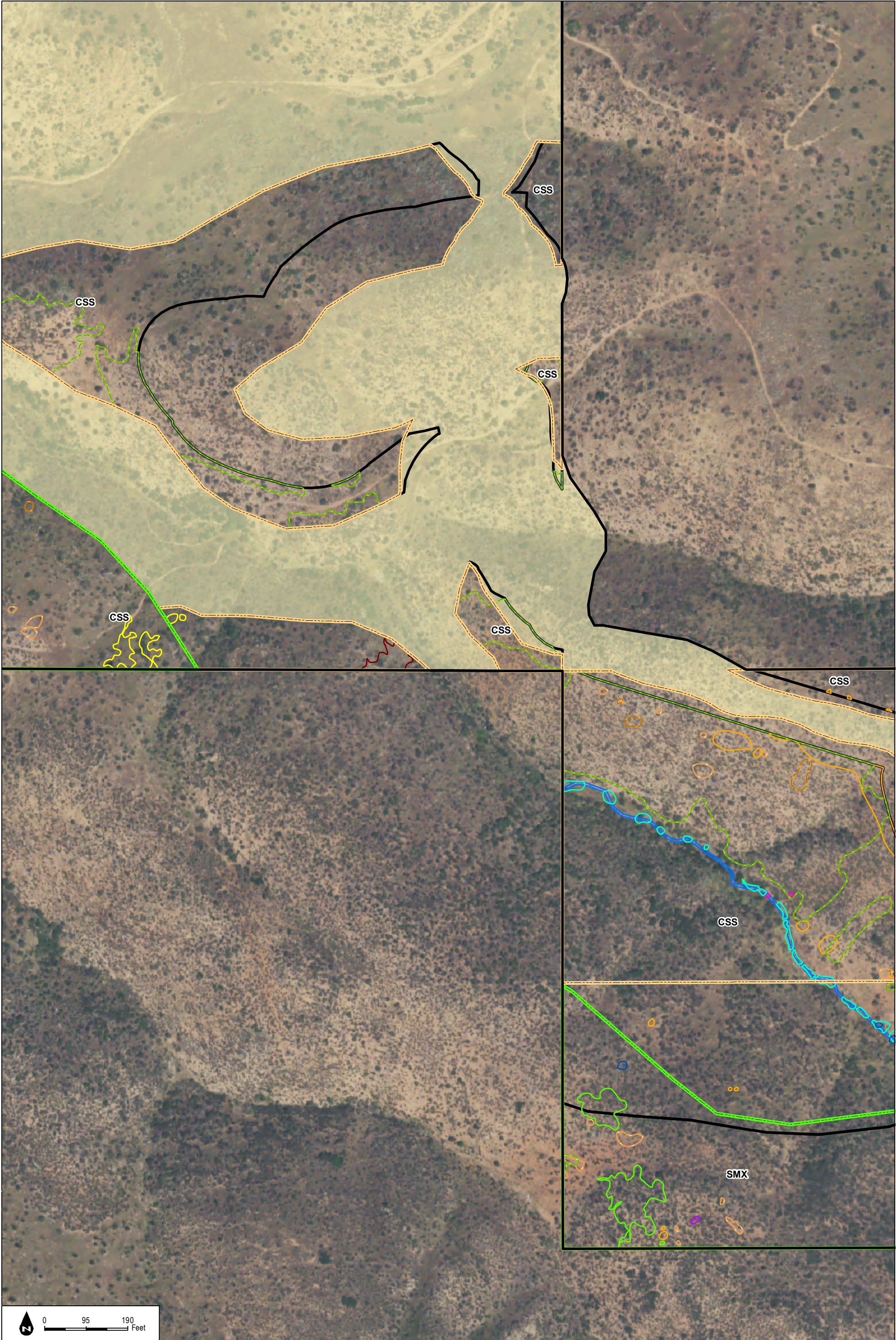
FIGURE 2-1E
Biological Resources

SOURCE: NAIP 2016; Hunsaker 2017

Otay Ranch Village 14 and Planning Areas 16/19 - Preserve Status Report

DUDEK

INTENTIONALLY LEFT BLANK



INTENTIONALLY LEFT BLANK

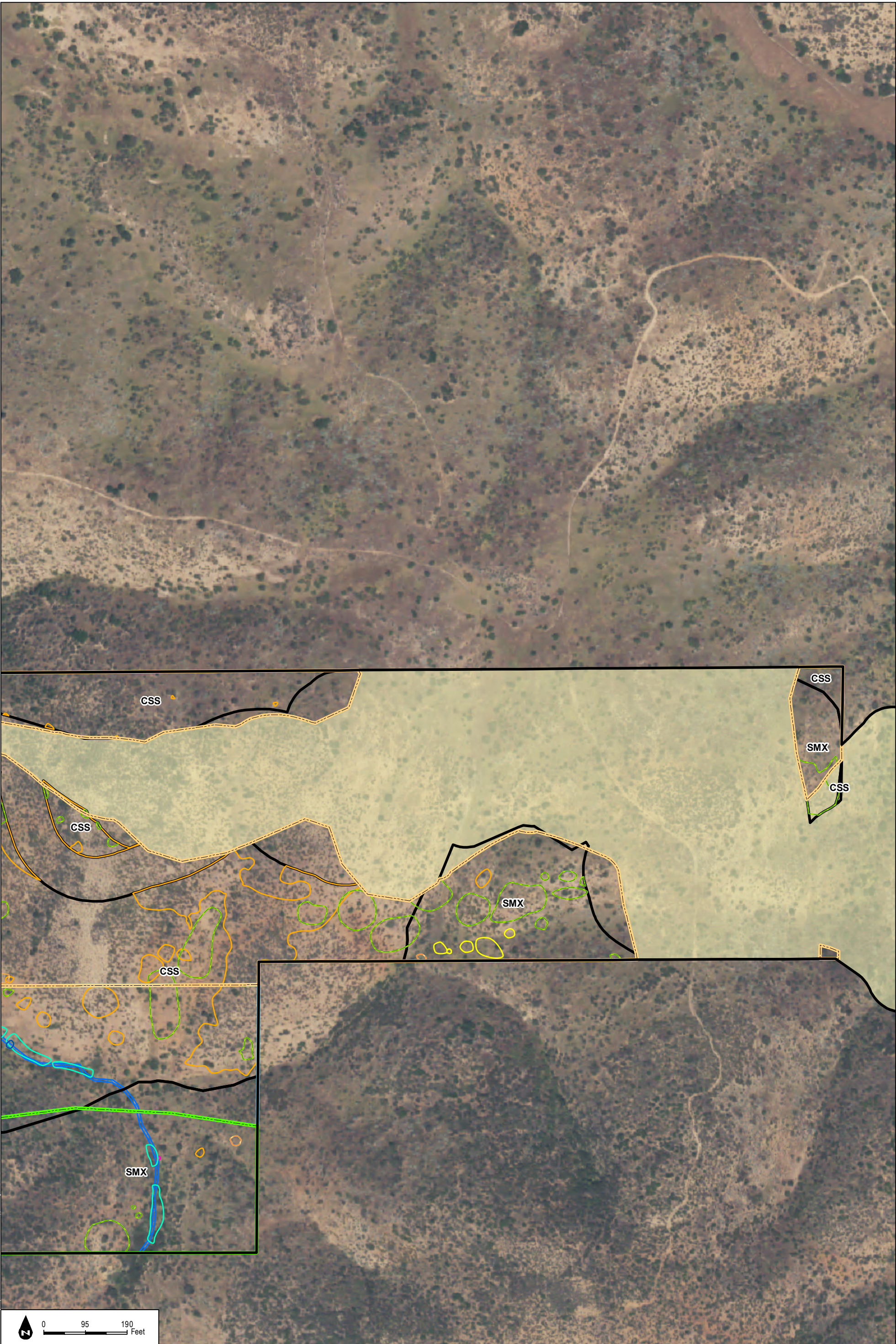


FIGURE 2-1G
Biological Resources

SOURCE: NAIP 2016; Hunsaker 2017

Otay Ranch Village 14 and Planning Areas 16/19 - Preserve Status Report

INTENTIONALLY LEFT BLANK

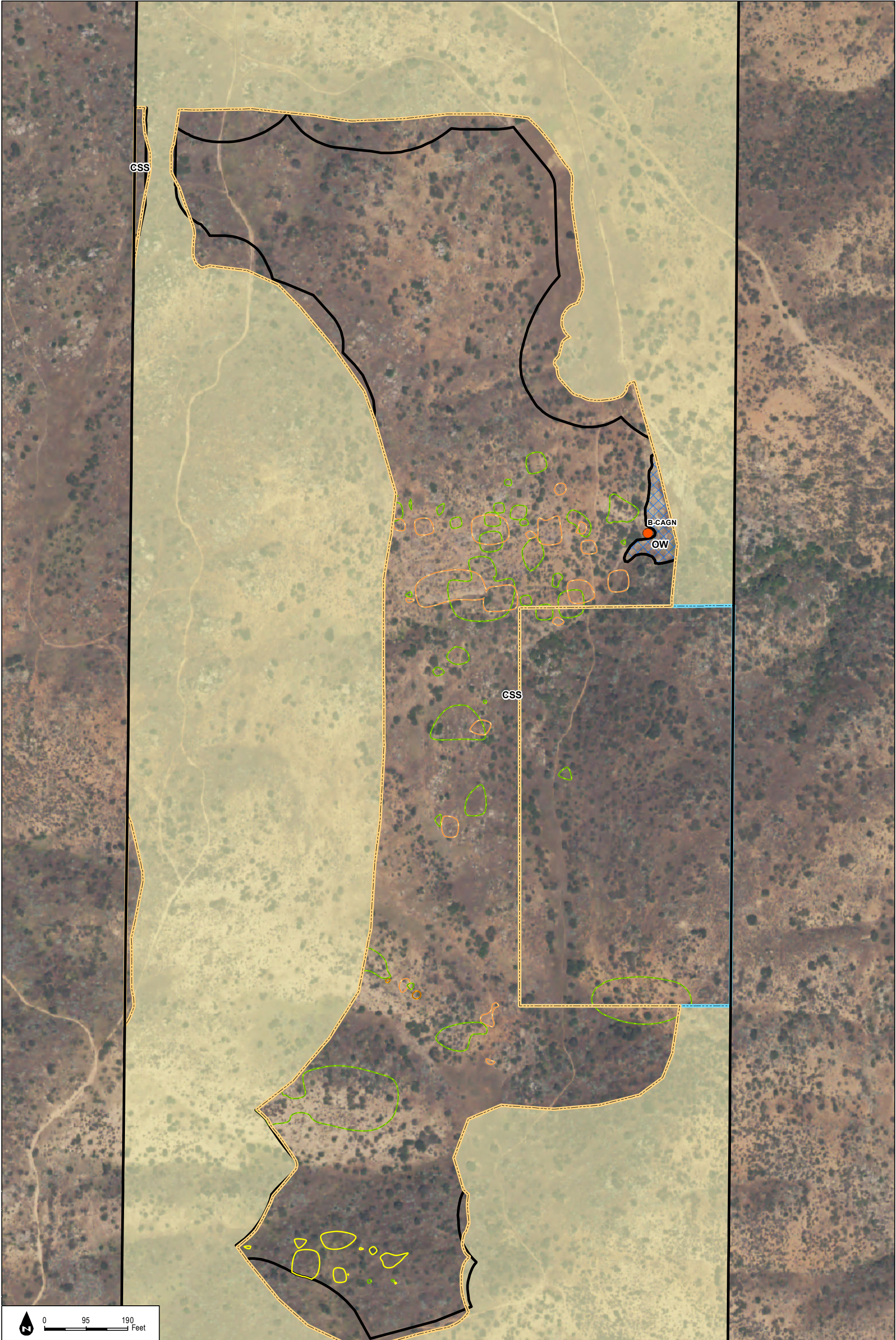
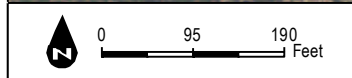
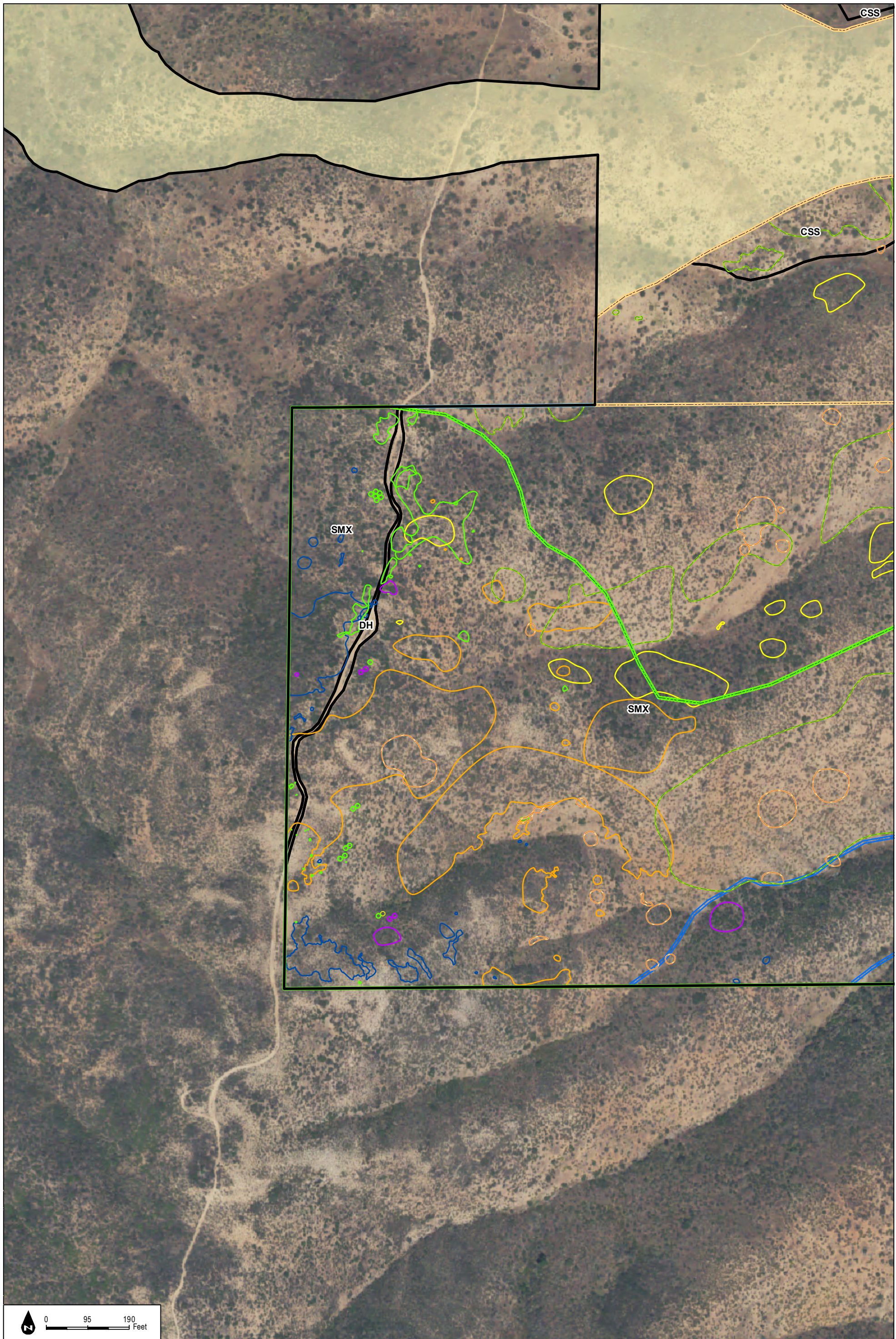
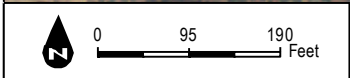
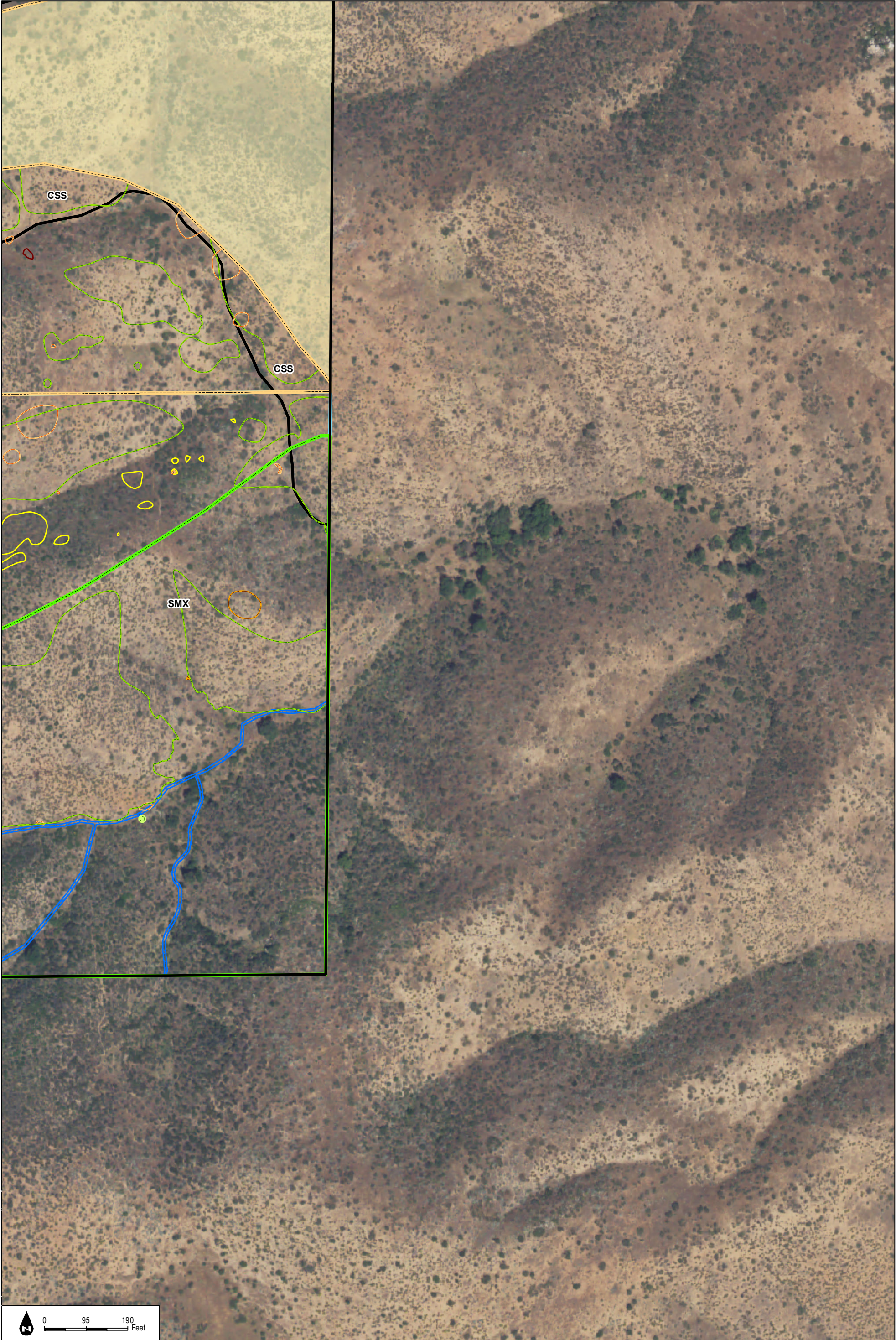


FIGURE 2-1H
Biological Resources

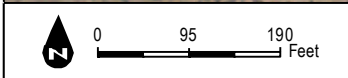
INTENTIONALLY LEFT BLANK



INTENTIONALLY LEFT BLANK



INTENTIONALLY LEFT BLANK



INTENTIONALLY LEFT BLANK

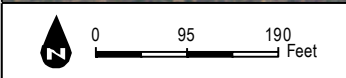
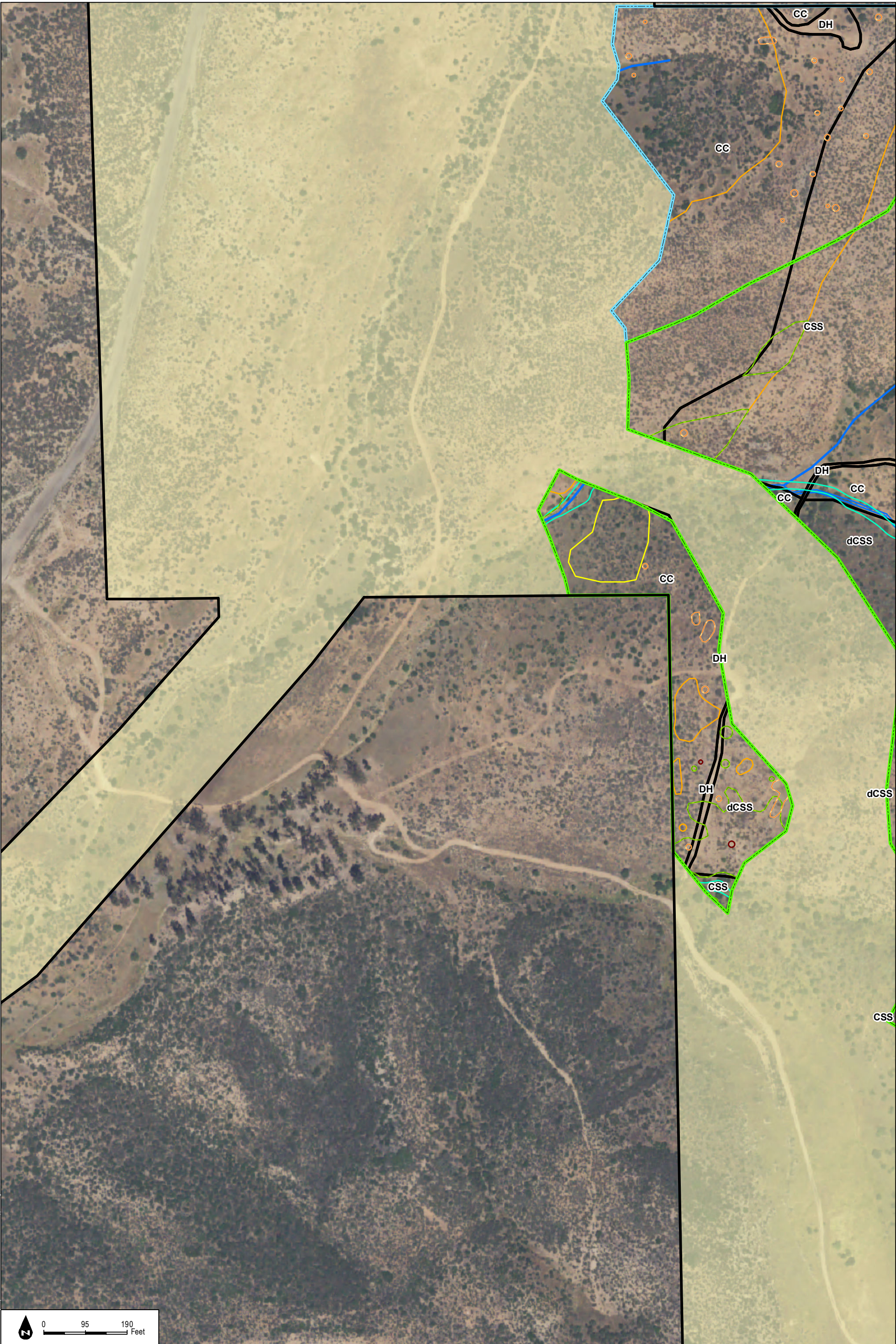


FIGURE 2-1L
Biological Resources

INTENTIONALLY LEFT BLANK