

SMX DH

DUDEK

SOURCE: NAIP 2016; Hunsaker 2017

Otay Ranch Village 14 and Planning Areas 16/19

**Figure 4-1i**  
Biological Resources



INTENTIONALLY LEFT BLANK





**Figure 4-1j**  
Biological Resources

SOURCE: NAIP 2016; Hunsaker 2017

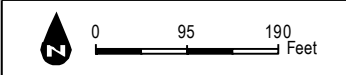
Otay Ranch Village 14 and Planning Areas 16/19

**DUDEK**



INTENTIONALLY LEFT BLANK

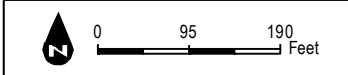






INTENTIONALLY LEFT BLANK

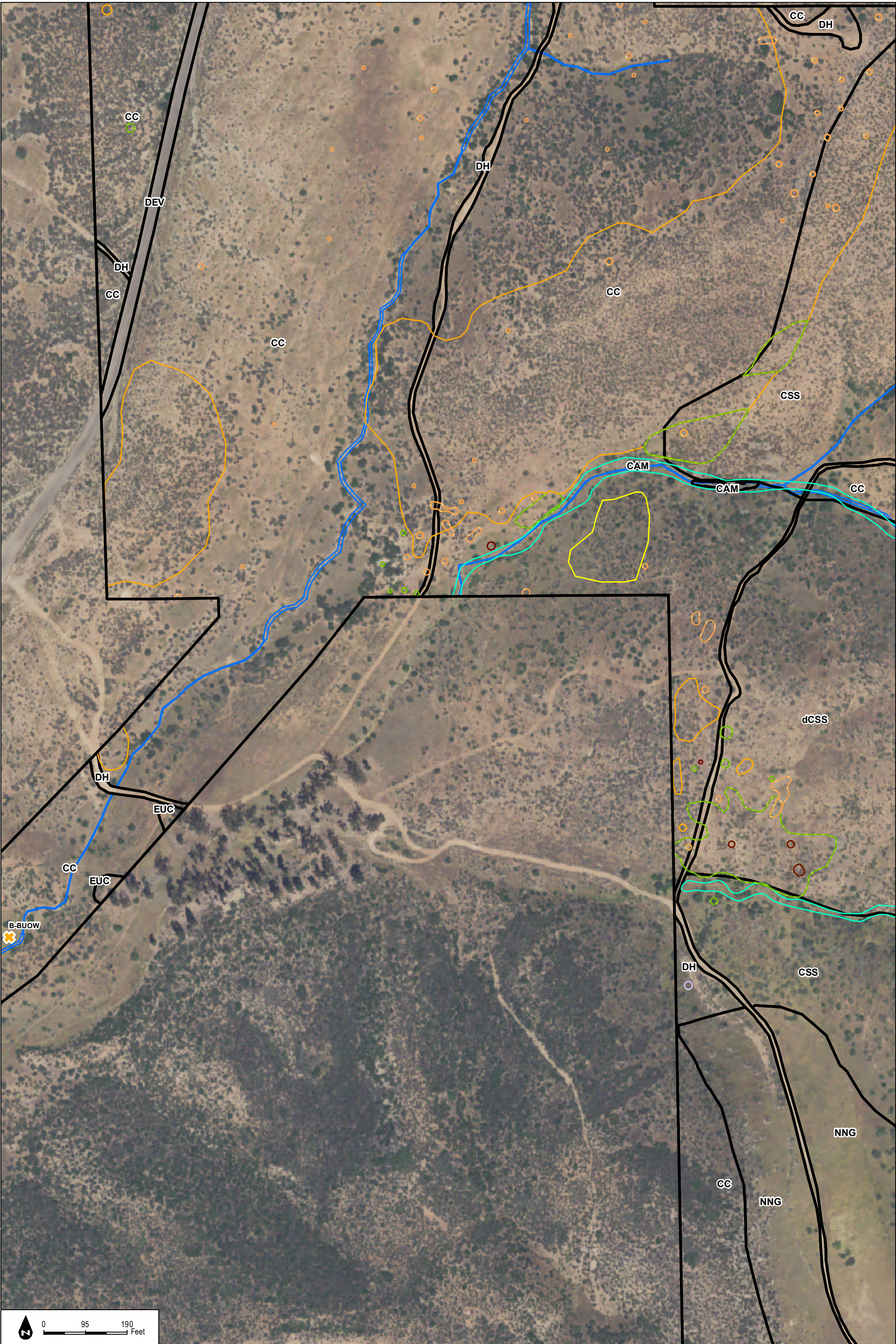






INTENTIONALLY LEFT BLANK





**Figure 4-1m**  
**Biological Resources**



INTENTIONALLY LEFT BLANK



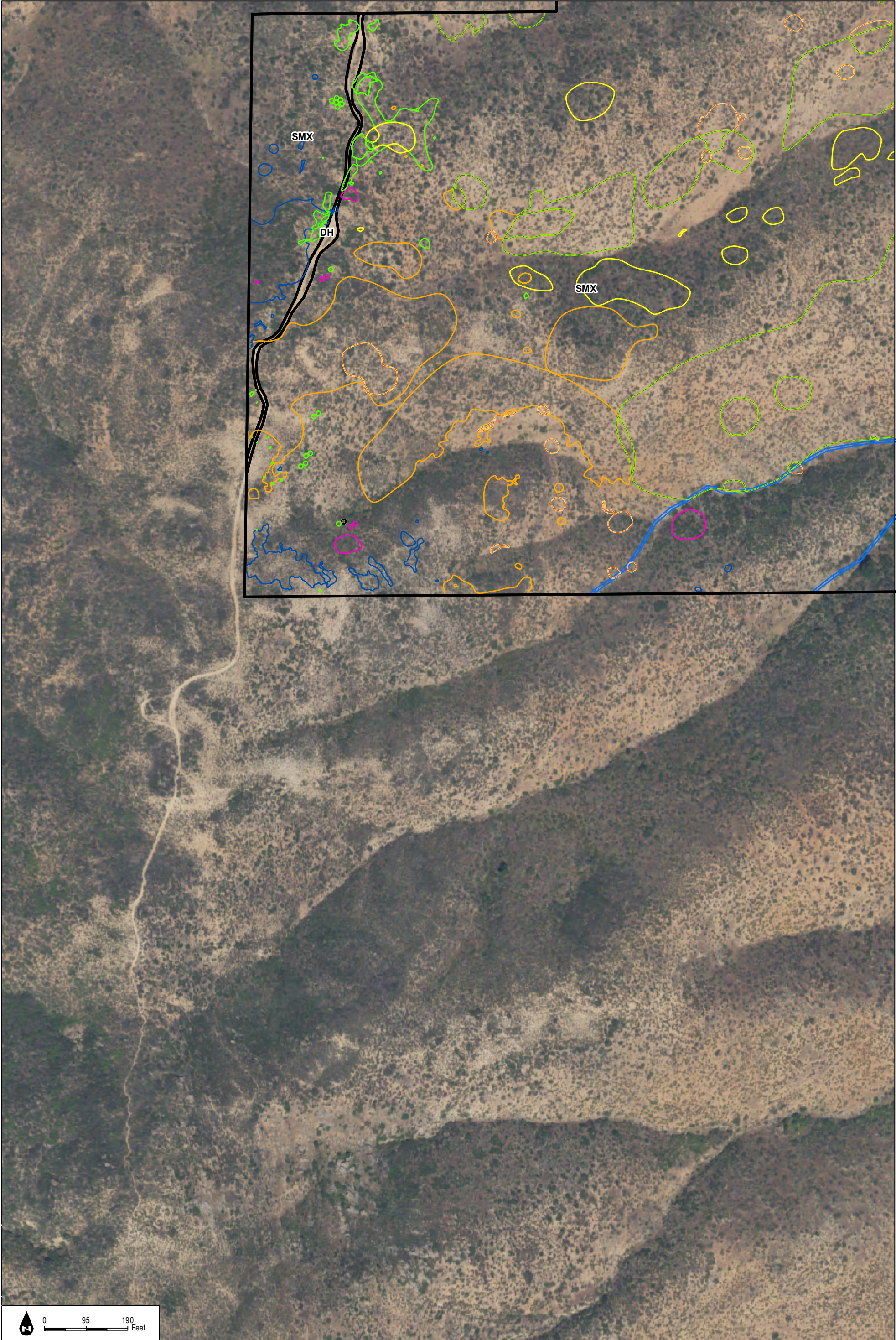


**Figure 4-1n**  
Biological Resources



INTENTIONALLY LEFT BLANK





**Figure 4-1o**  
Biological Resources

SOURCE: NAIP 2016; Hunsaker 2017

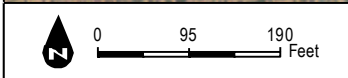
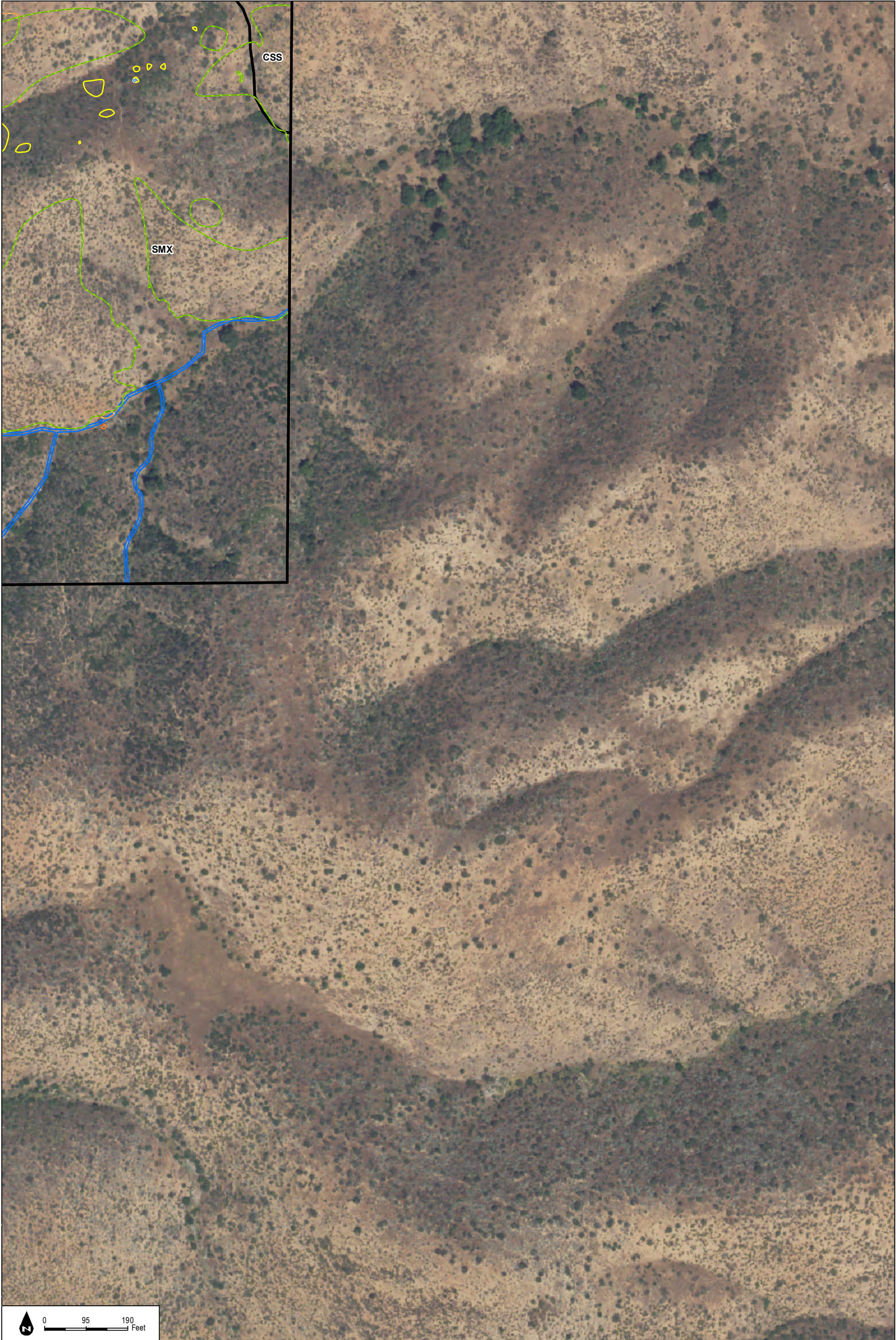
Otay Ranch Village 14 and Planning Areas 16/19

**DUDEK**



INTENTIONALLY LEFT BLANK

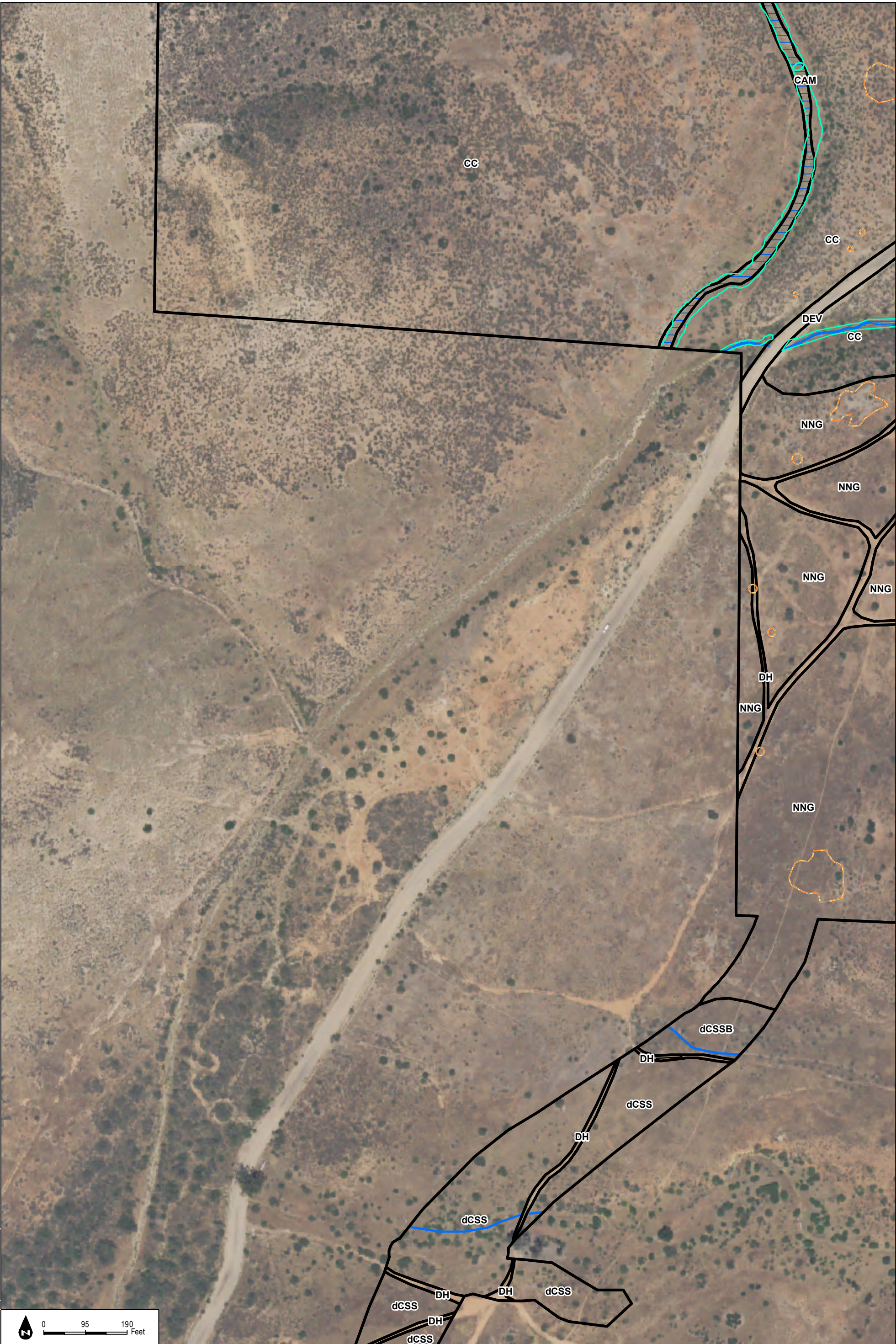






INTENTIONALLY LEFT BLANK





**Figure 4-1q**  
Biological Resources

SOURCE: NAIP 2016; Hunsaker 2017

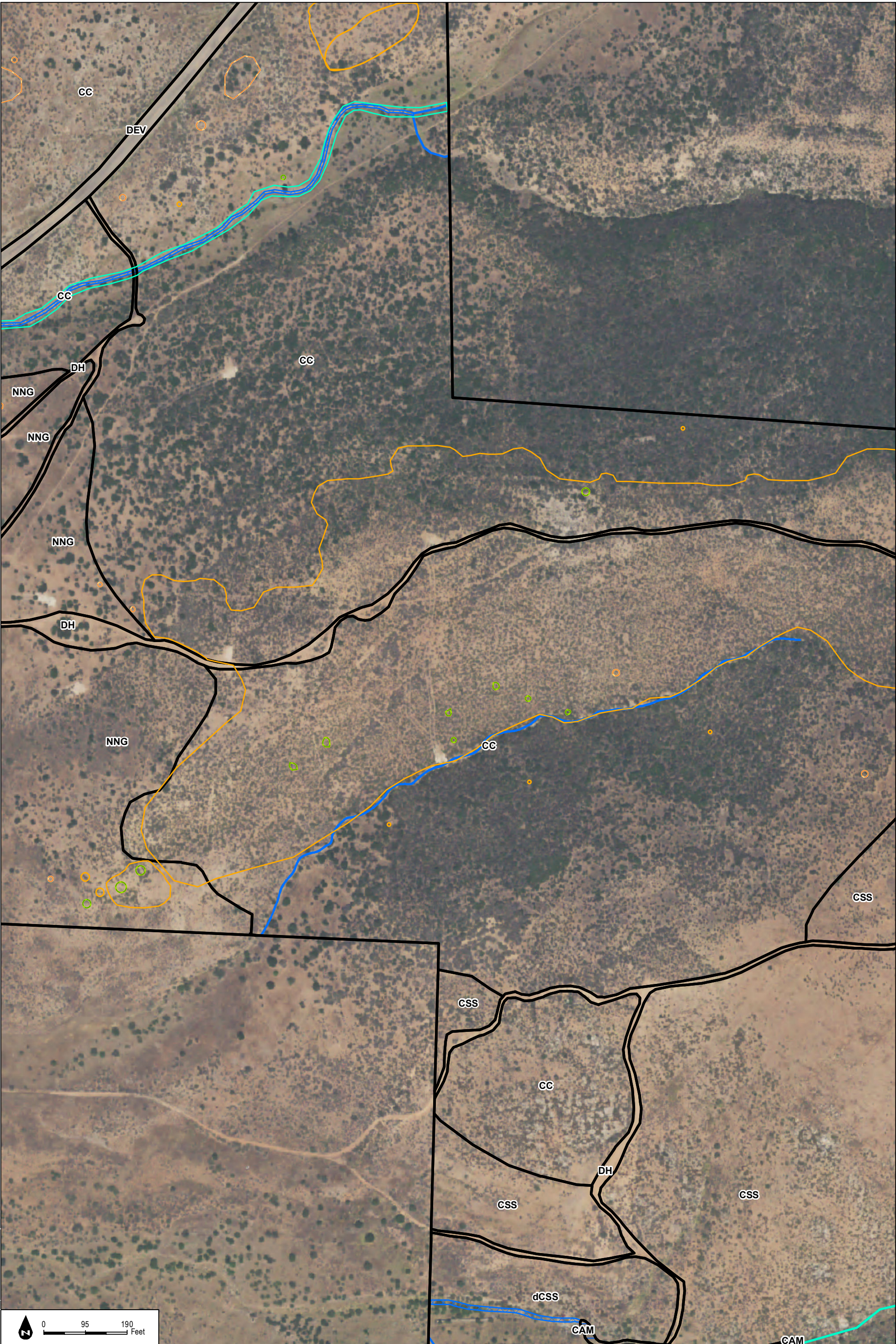
Otay Ranch Village 14 and Planning Areas 16/19

**DUDEK**



INTENTIONALLY LEFT BLANK





**Figure 4-1r**  
Biological Resources

SOURCE: NAIP 2016; Hunsaker 2017

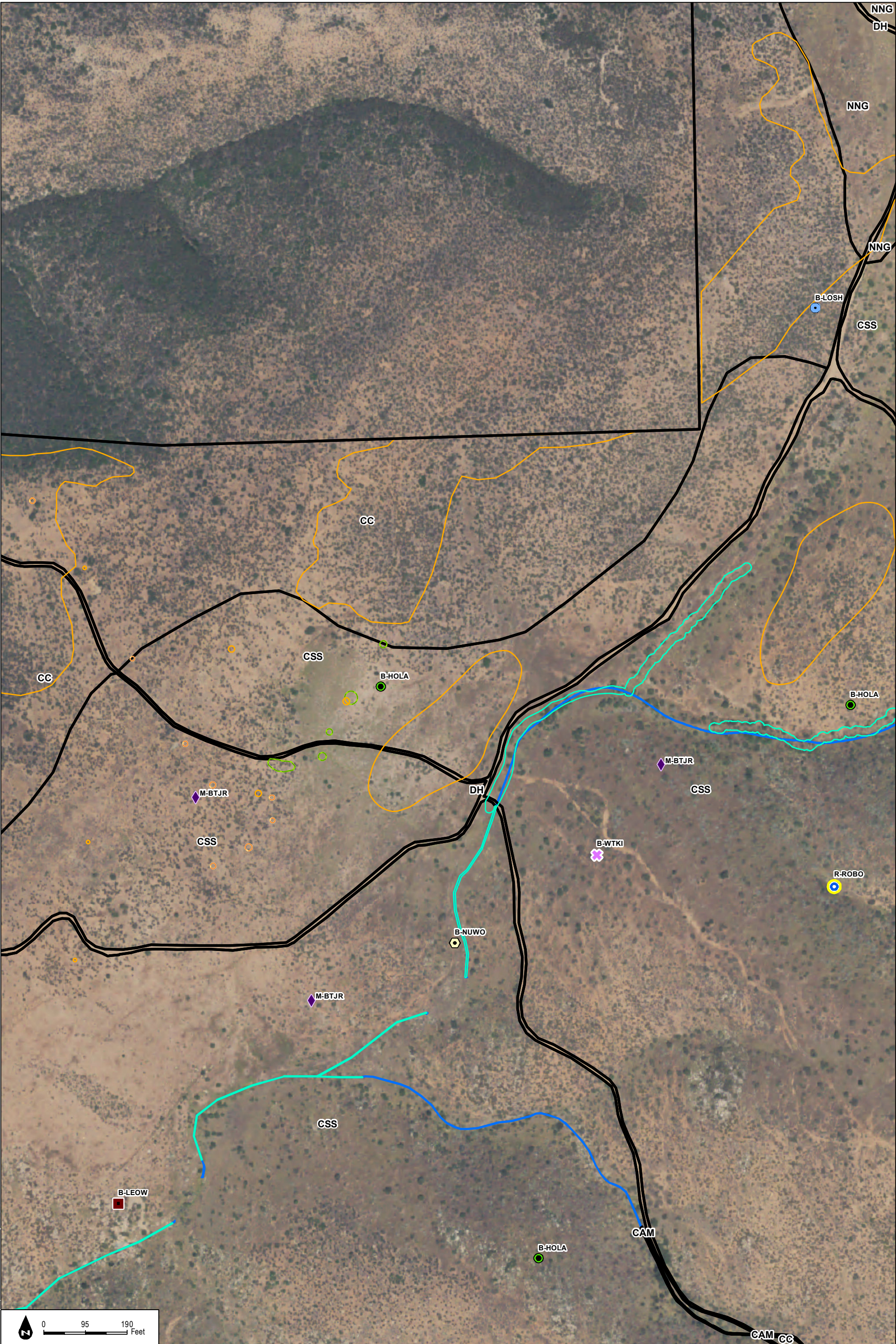
Otay Ranch Village 14 and Planning Areas 16/19

**DUDEK**



INTENTIONALLY LEFT BLANK





**Figure 4-1s**  
Biological Resources

SOURCE: NAIP 2016; Hunsaker 2017

Otay Ranch Village 14 and Planning Areas 16/19

**DUDEK**



INTENTIONALLY LEFT BLANK





**Figure 4-1t**  
Biological Resources

SOURCE: NAIP 2016; Hunsaker 2017

Otay Ranch Village 14 and Planning Areas 16/19

**DUDEK**



INTENTIONALLY LEFT BLANK





**Figure 4-1u**  
Biological Resources

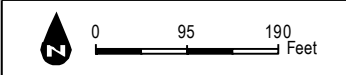
SOURCE: NAIP 2016; Hunsaker 2017

Otay Ranch Village 14 and Planning Areas 16/19



INTENTIONALLY LEFT BLANK

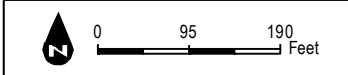
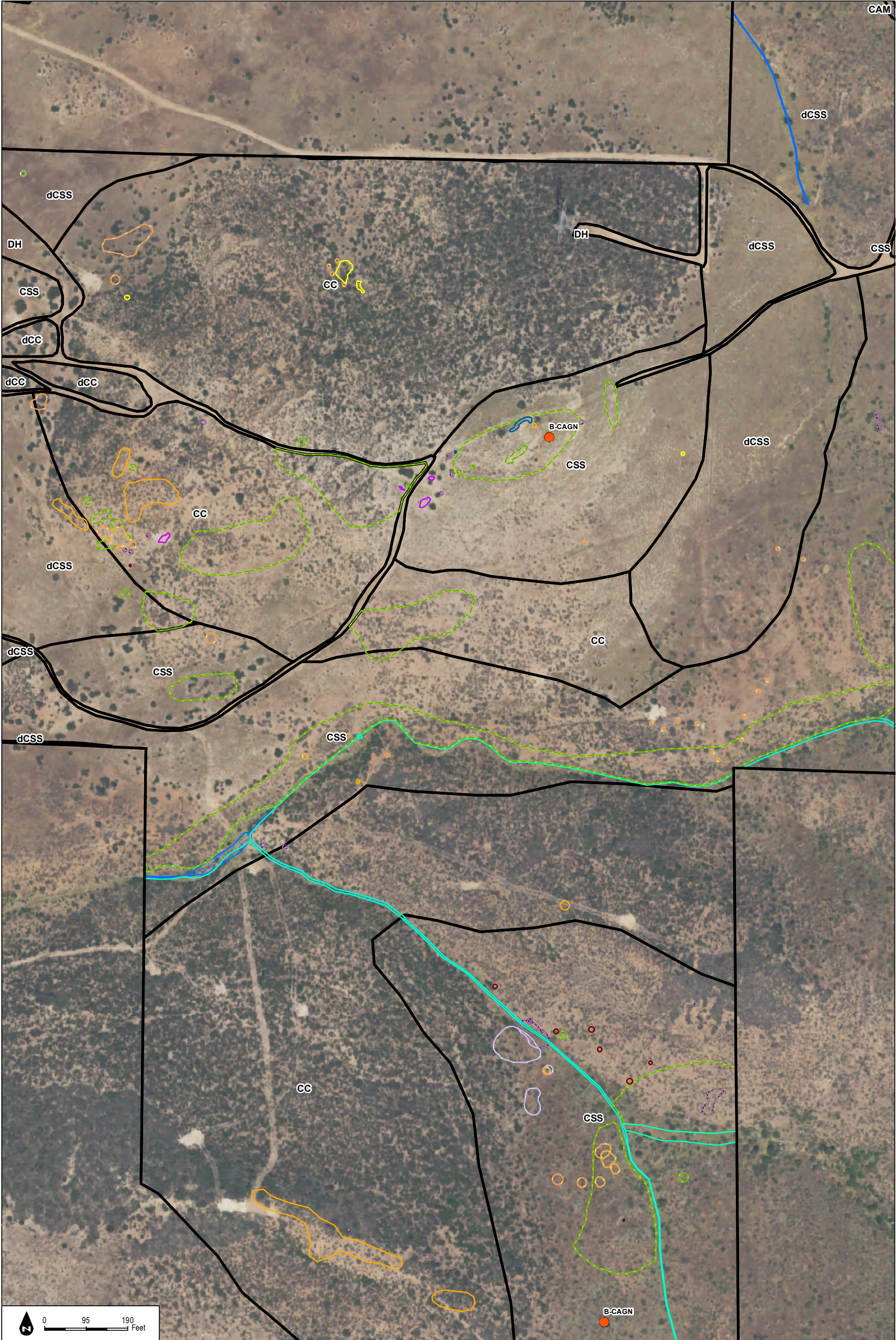






INTENTIONALLY LEFT BLANK







INTENTIONALLY LEFT BLANK