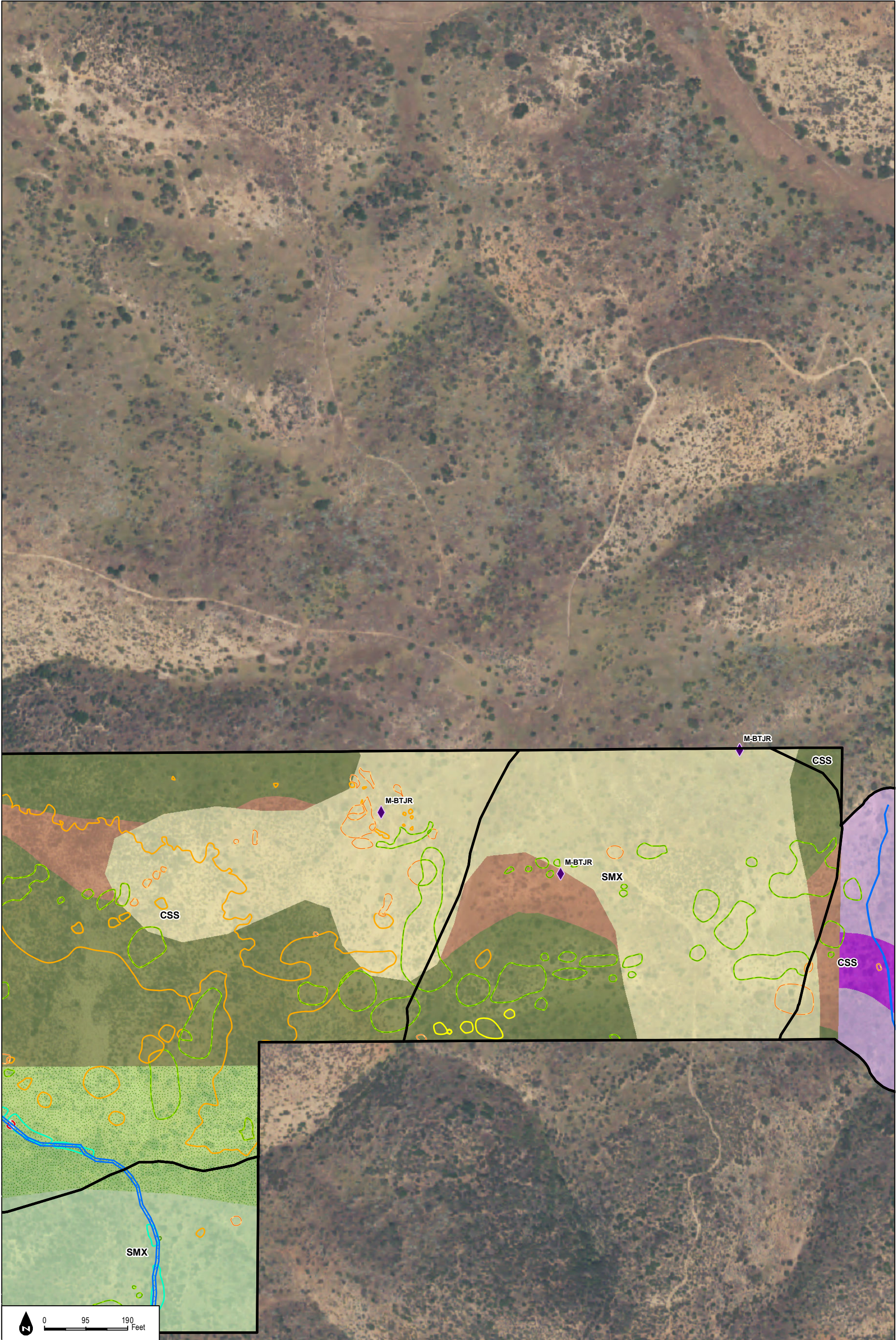
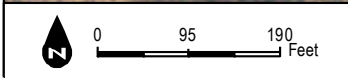
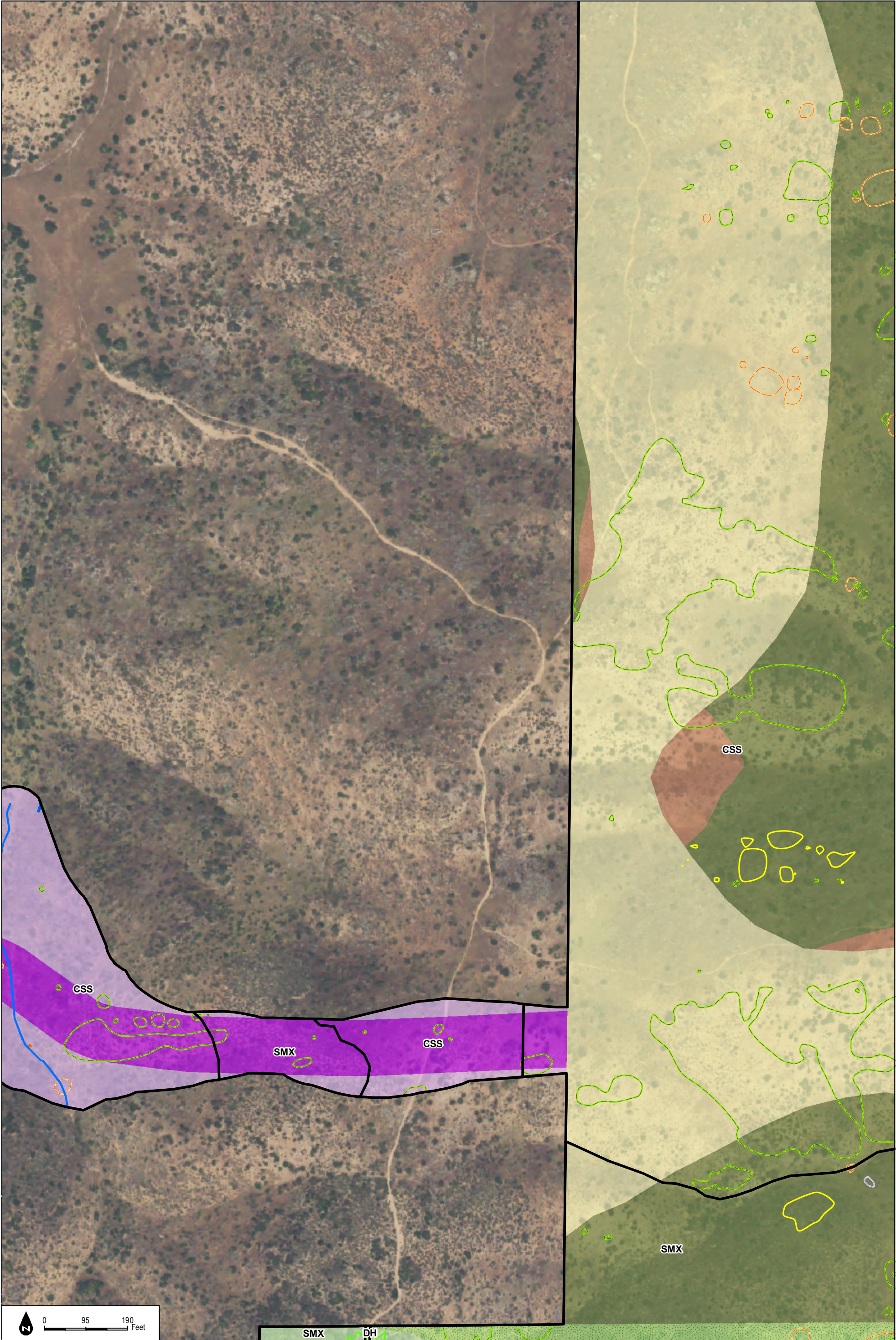


INTENTIONALLY LEFT BLANK



INTENTIONALLY LEFT BLANK



SMX DH

DUDEK

SOURCE: NAIP 2016; Hunsaker 2017

Otay Ranch Village 14 and Planning Areas 16/19

Figure 2.4-19i
Impacts to Biological Resources

INTENTIONALLY LEFT BLANK



INTENTIONALLY LEFT BLANK



Figure 2.4-19k
Impacts to Biological Resources

INTENTIONALLY LEFT BLANK



INTENTIONALLY LEFT BLANK

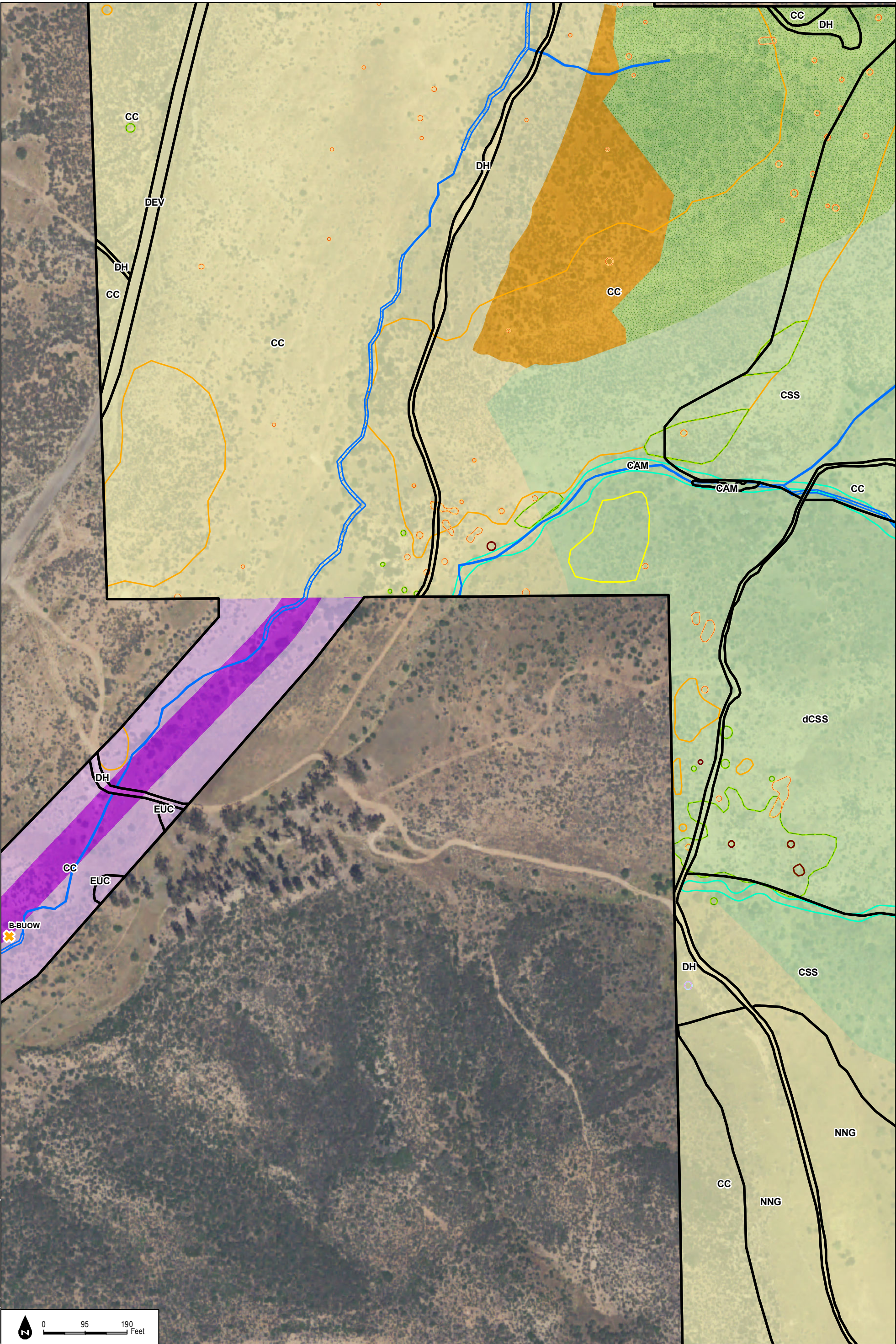
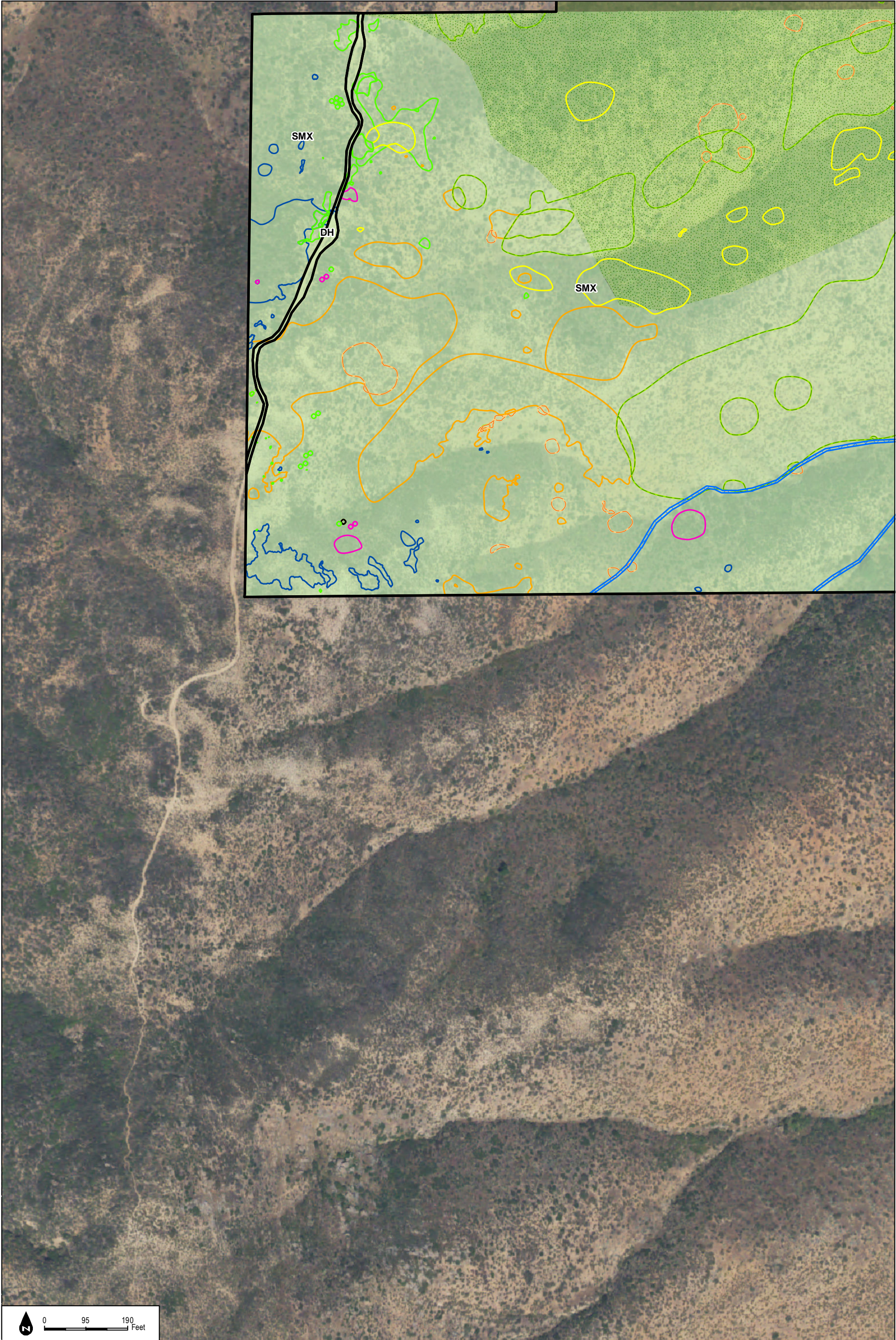


Figure 2.4-19m
Impacts to Biological Resources

INTENTIONALLY LEFT BLANK



INTENTIONALLY LEFT BLANK



0 95 190 Feet

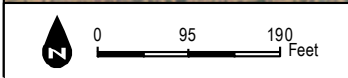
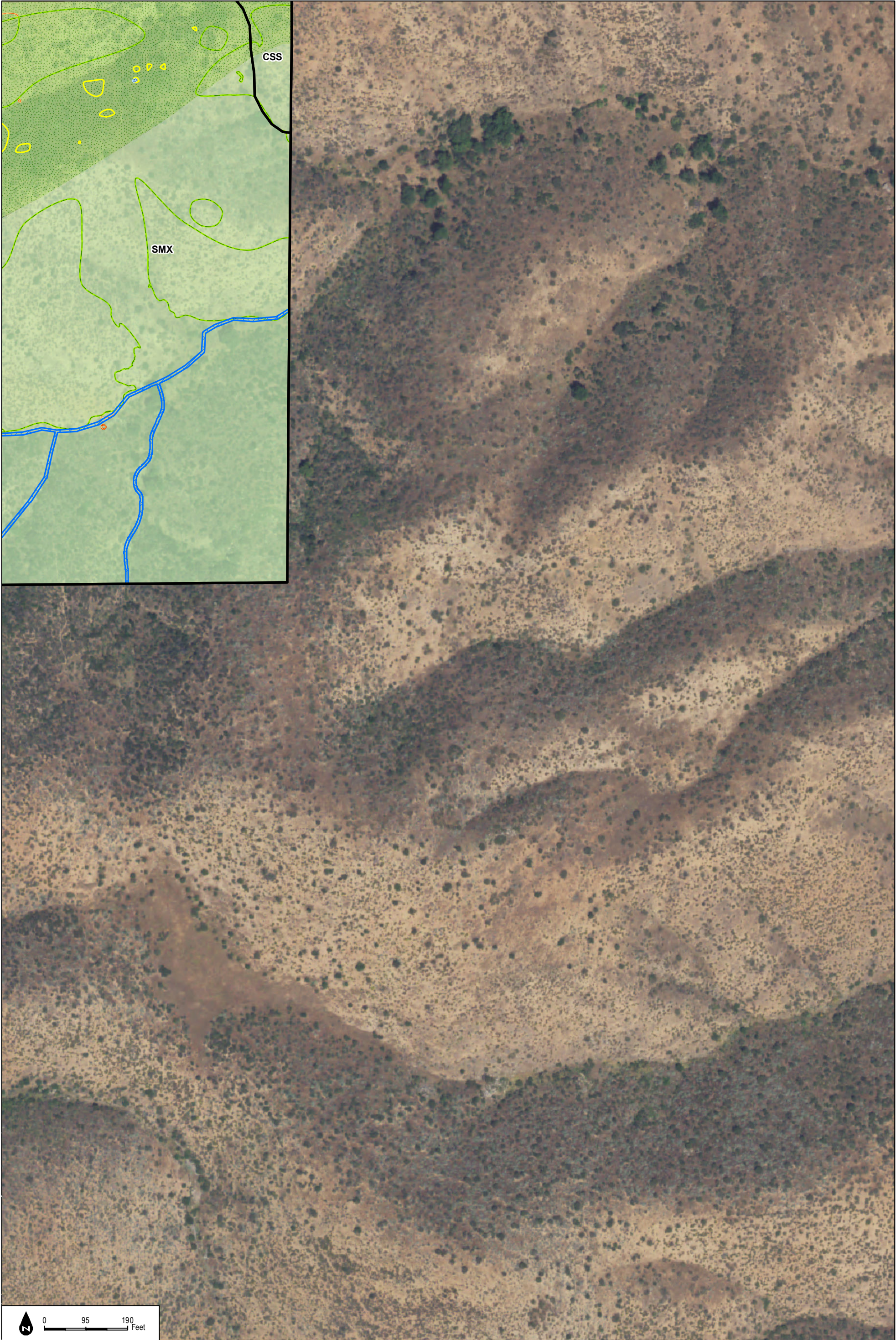
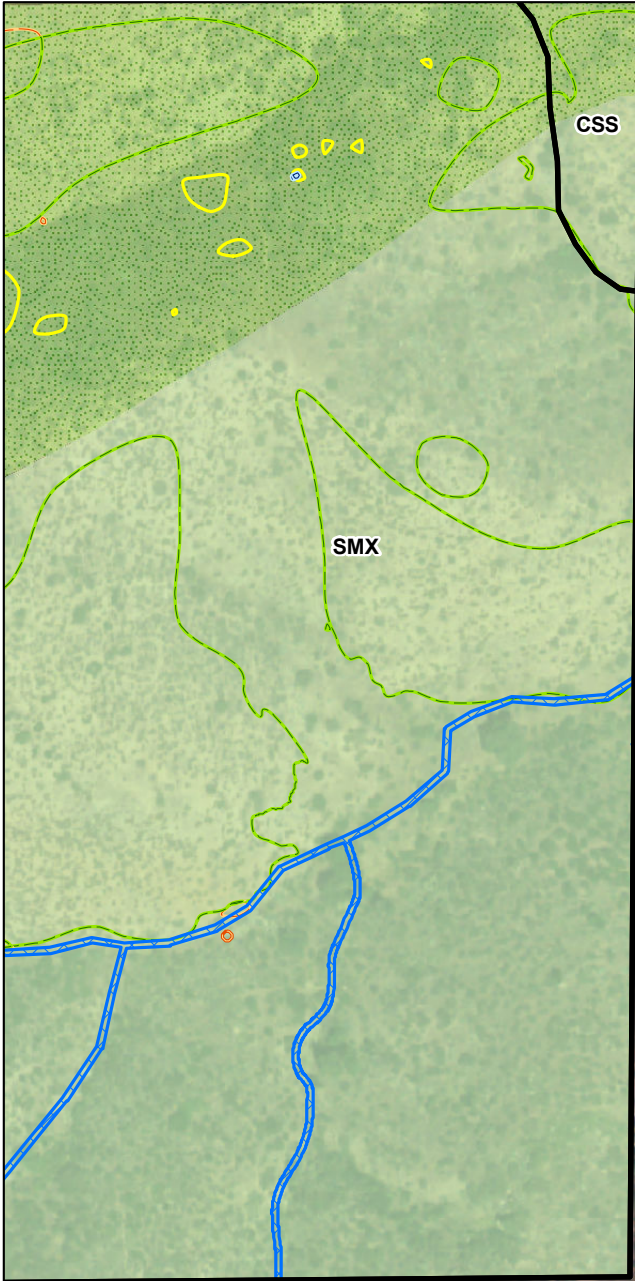
DUDEK

SOURCE: NAIP 2016; Hunsaker 2017

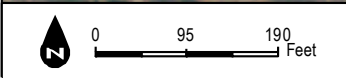
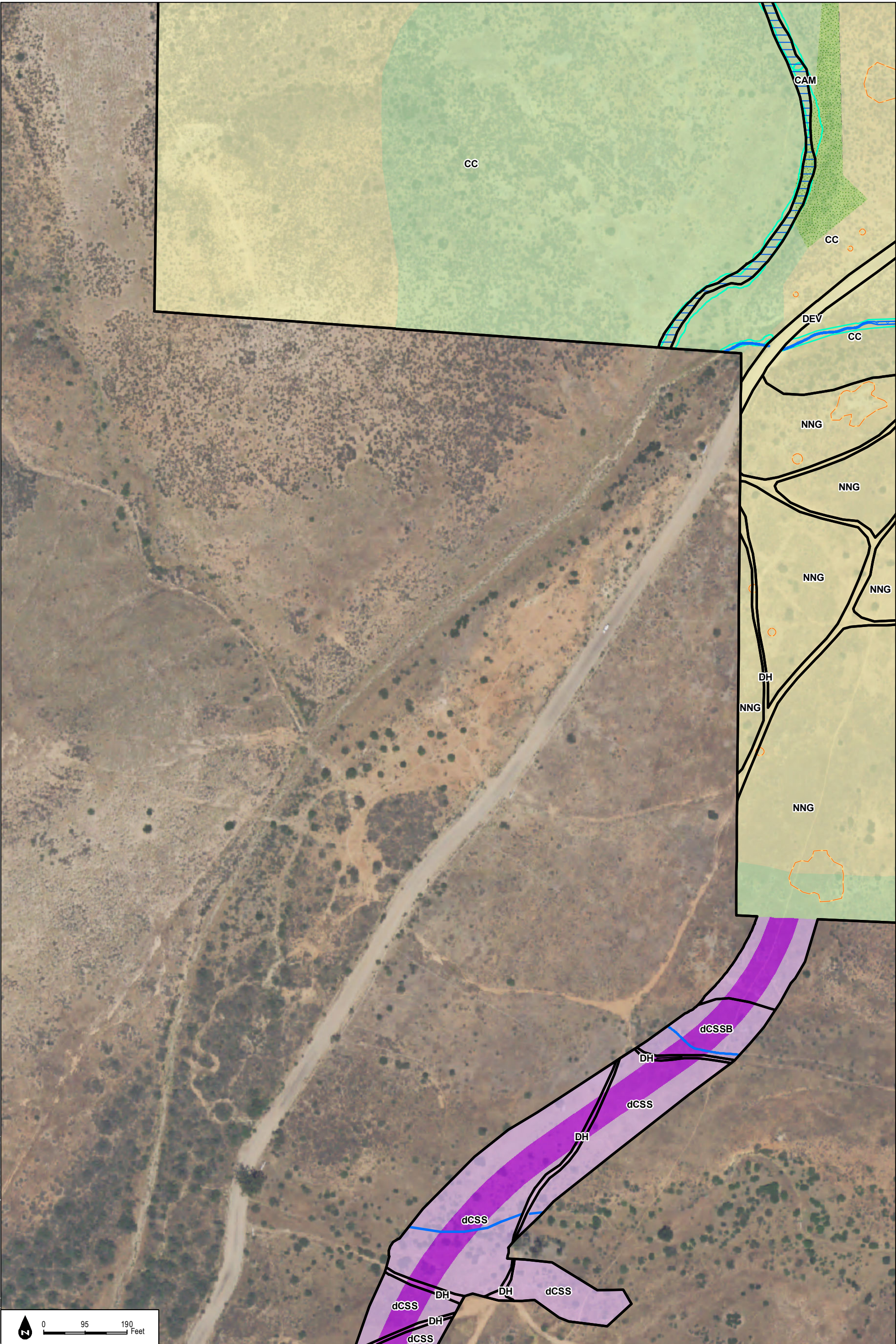
Otay Ranch Village 14 and Planning Areas 16/19

Figure 2.4-19o
Impacts to Biological Resources

INTENTIONALLY LEFT BLANK



INTENTIONALLY LEFT BLANK



INTENTIONALLY LEFT BLANK

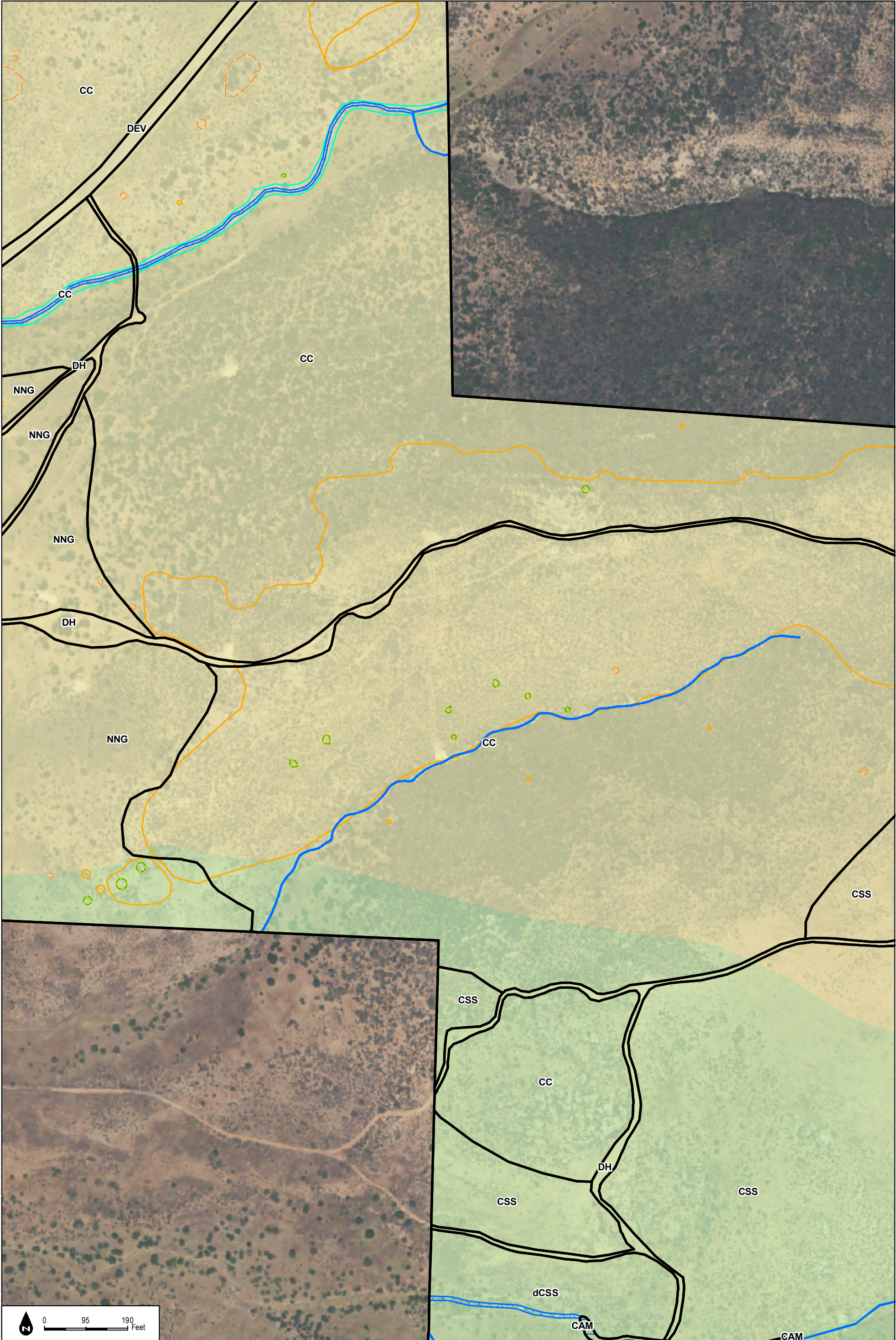


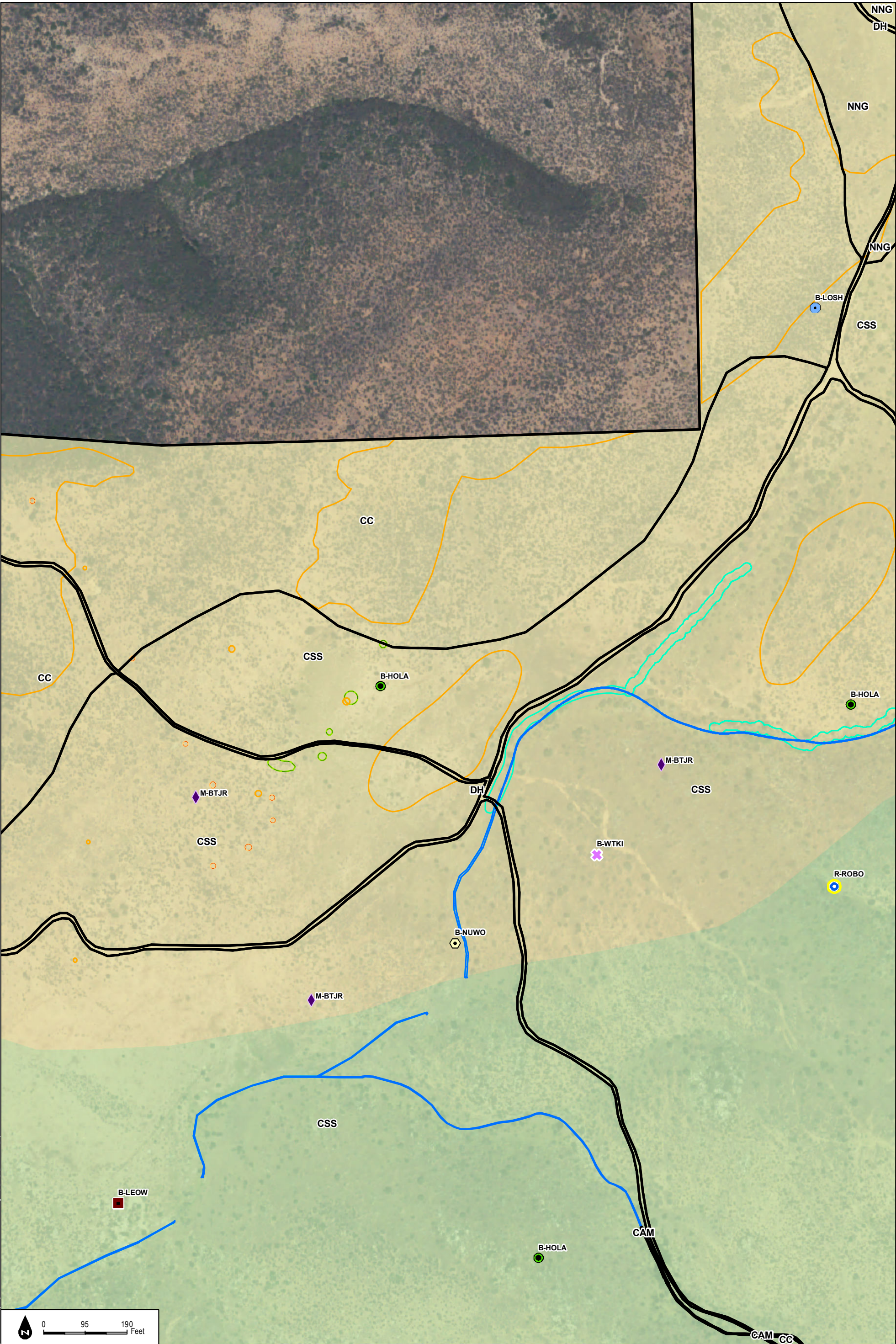
Figure 2.4-19r
Impacts to Biological Resources

SOURCE: NAIP 2016; Hunsaker 2017

Otay Ranch Village 14 and Planning Areas 16/19

DUDEK

INTENTIONALLY LEFT BLANK



INTENTIONALLY LEFT BLANK



INTENTIONALLY LEFT BLANK

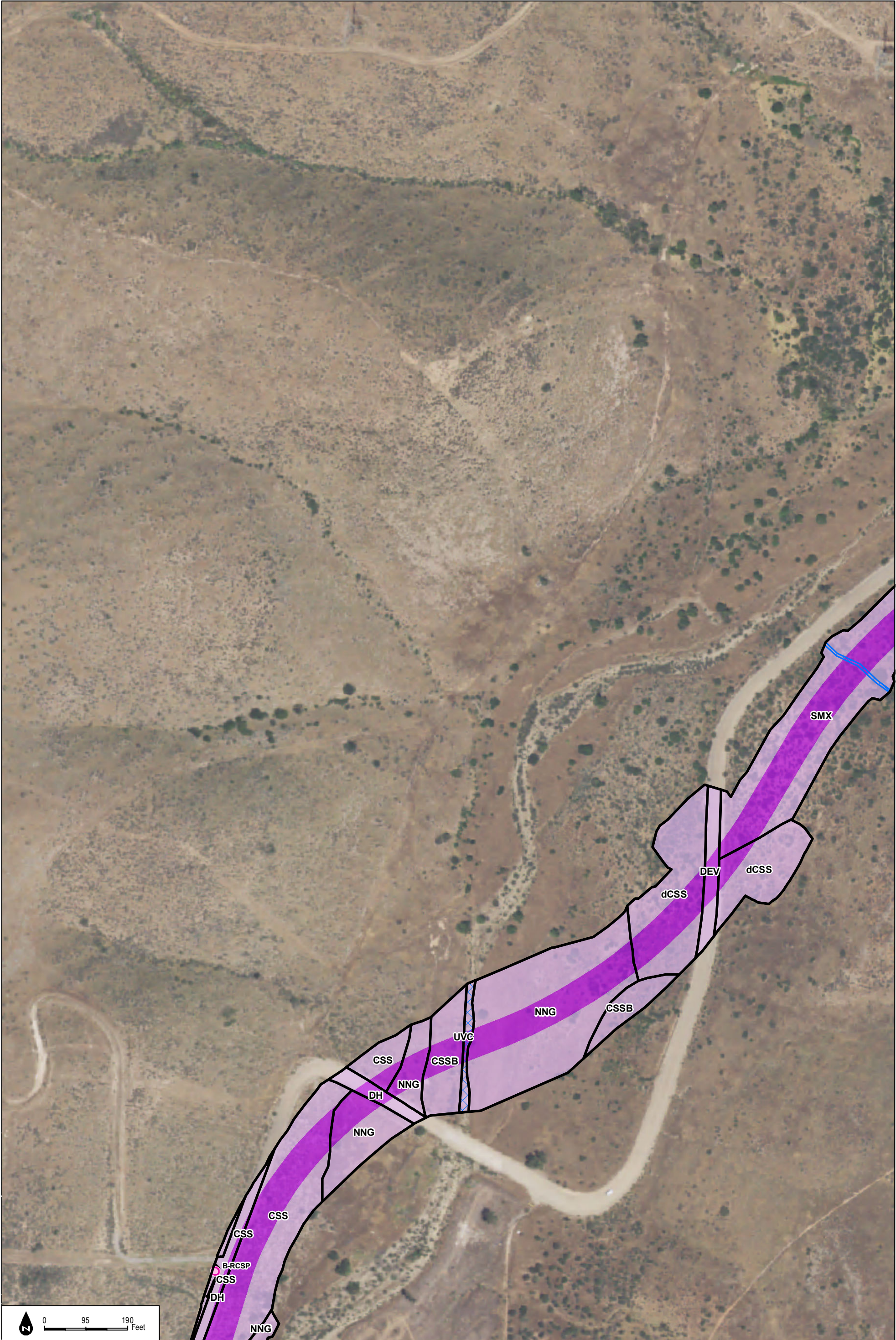
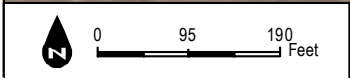
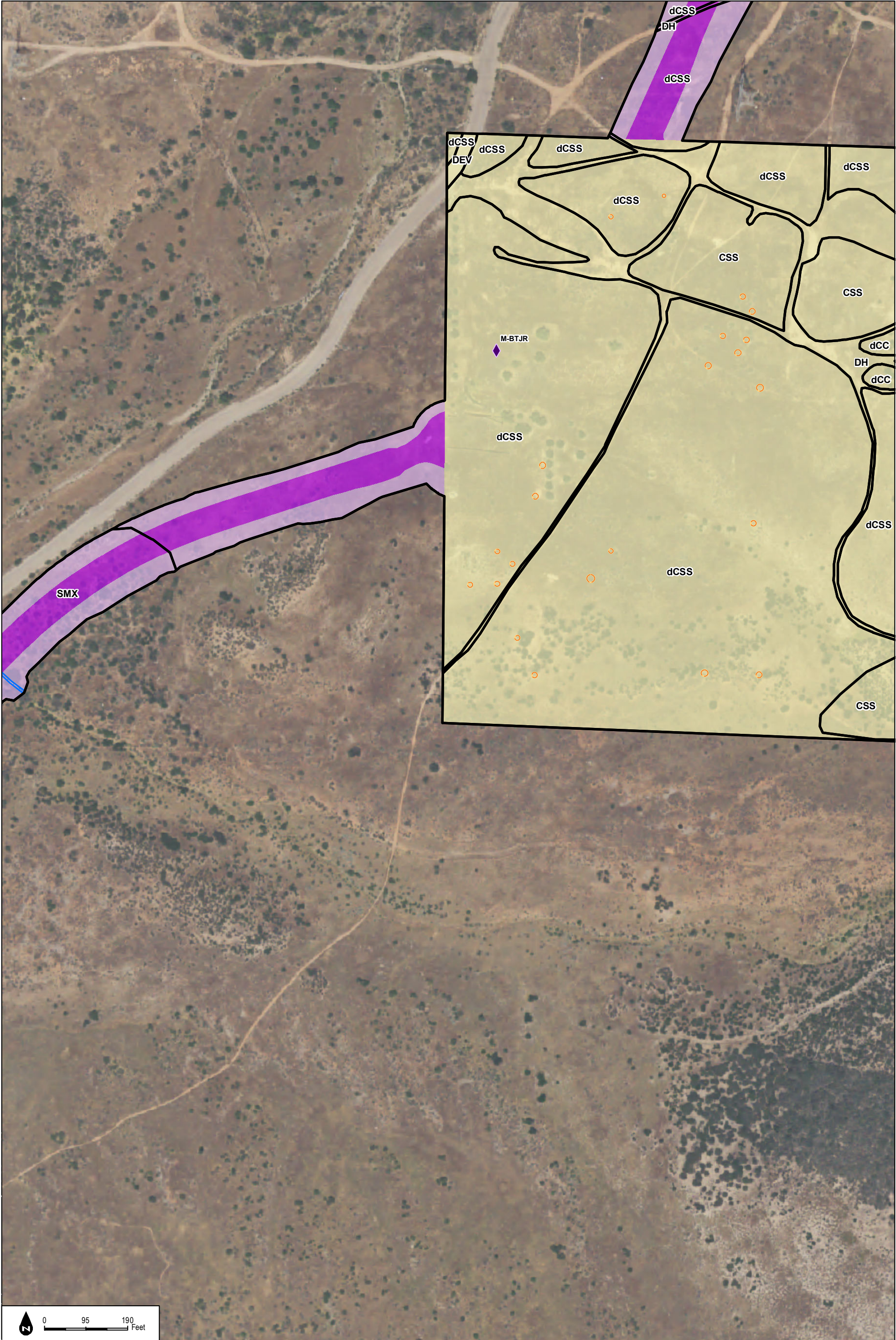
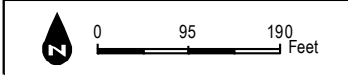


Figure 2.4-19u
Impacts to Biological Resources

INTENTIONALLY LEFT BLANK



INTENTIONALLY LEFT BLANK



INTENTIONALLY LEFT BLANK

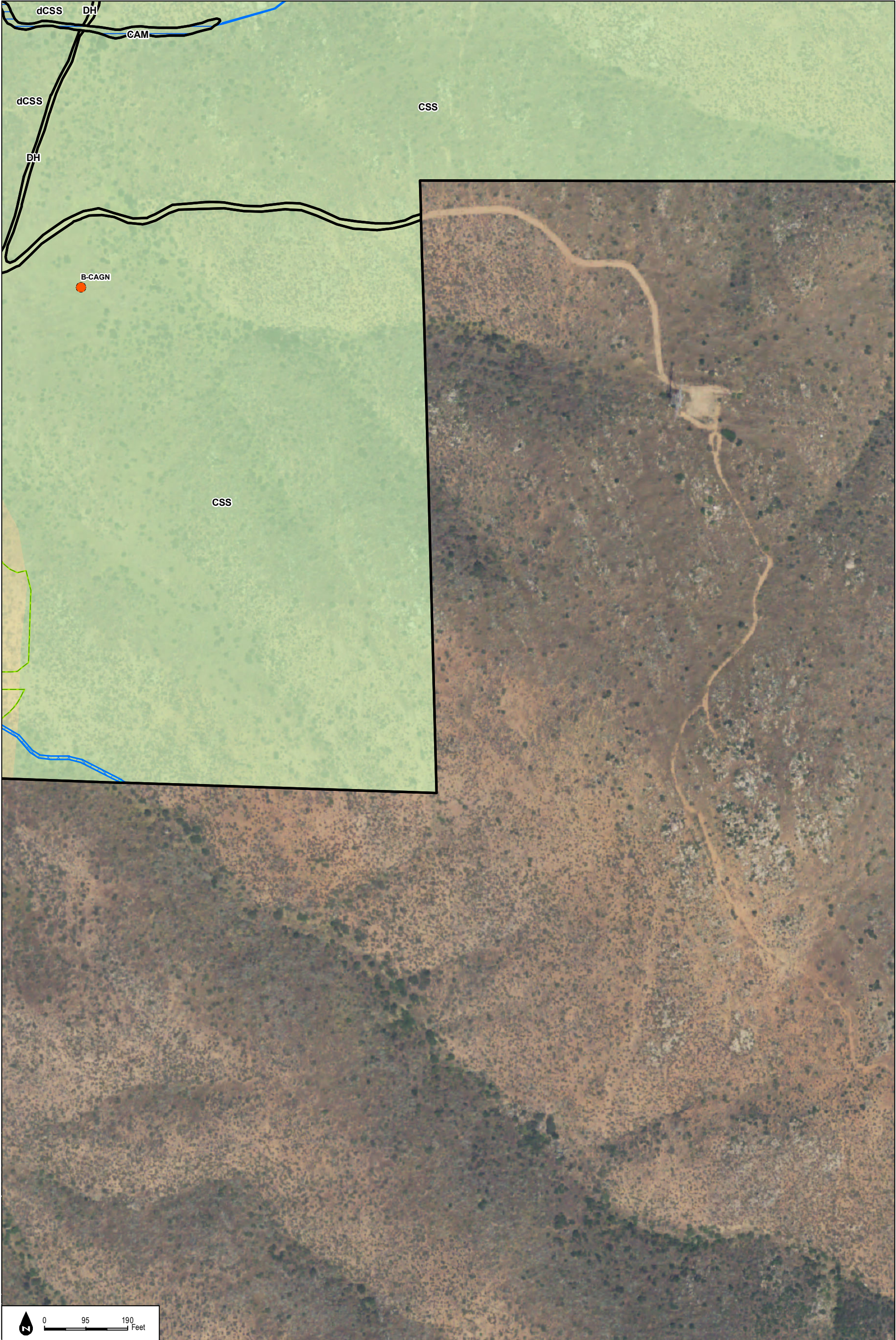


Figure 2.4-19x
Impacts to Biological Resources

INTENTIONALLY LEFT BLANK

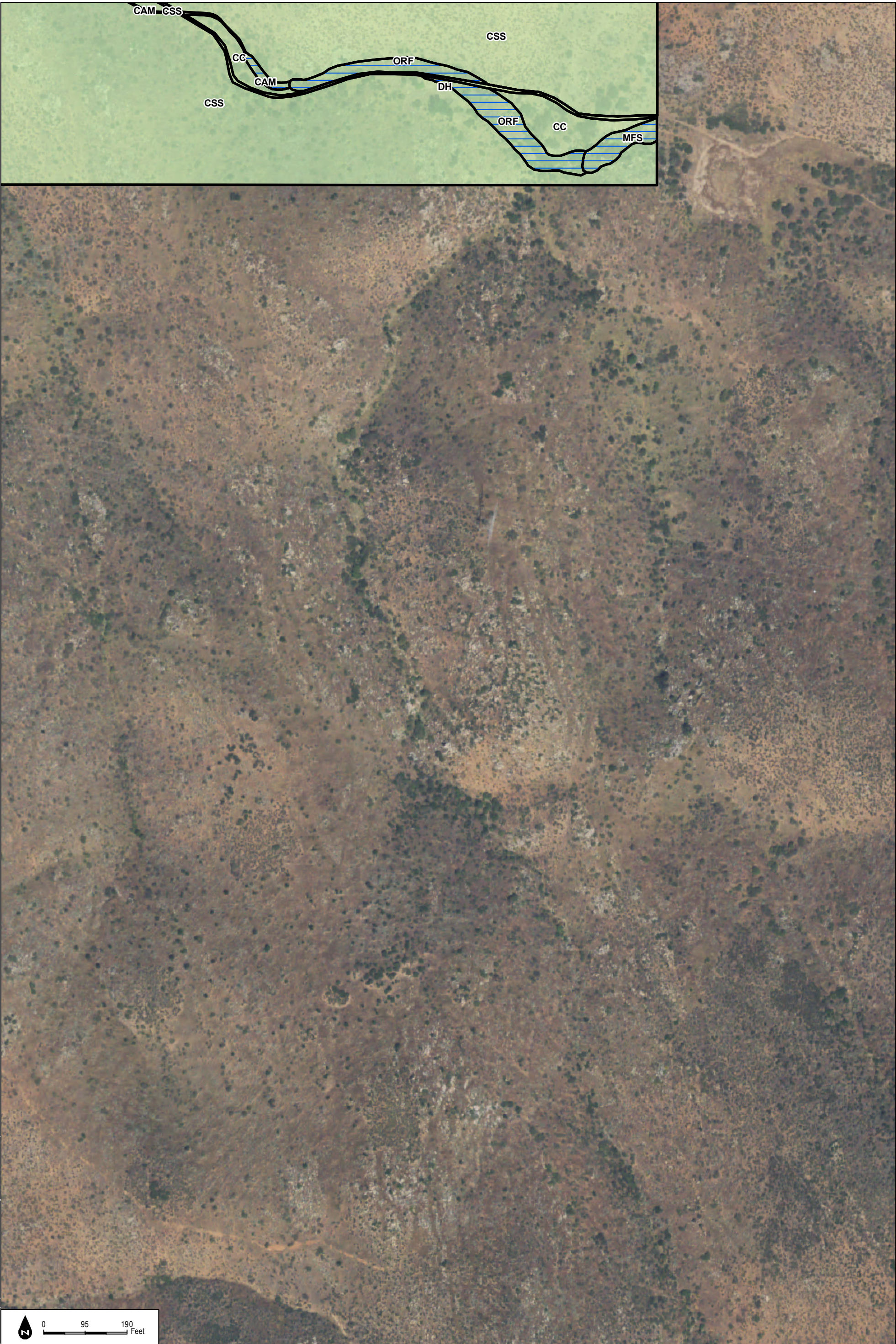
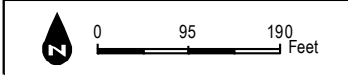
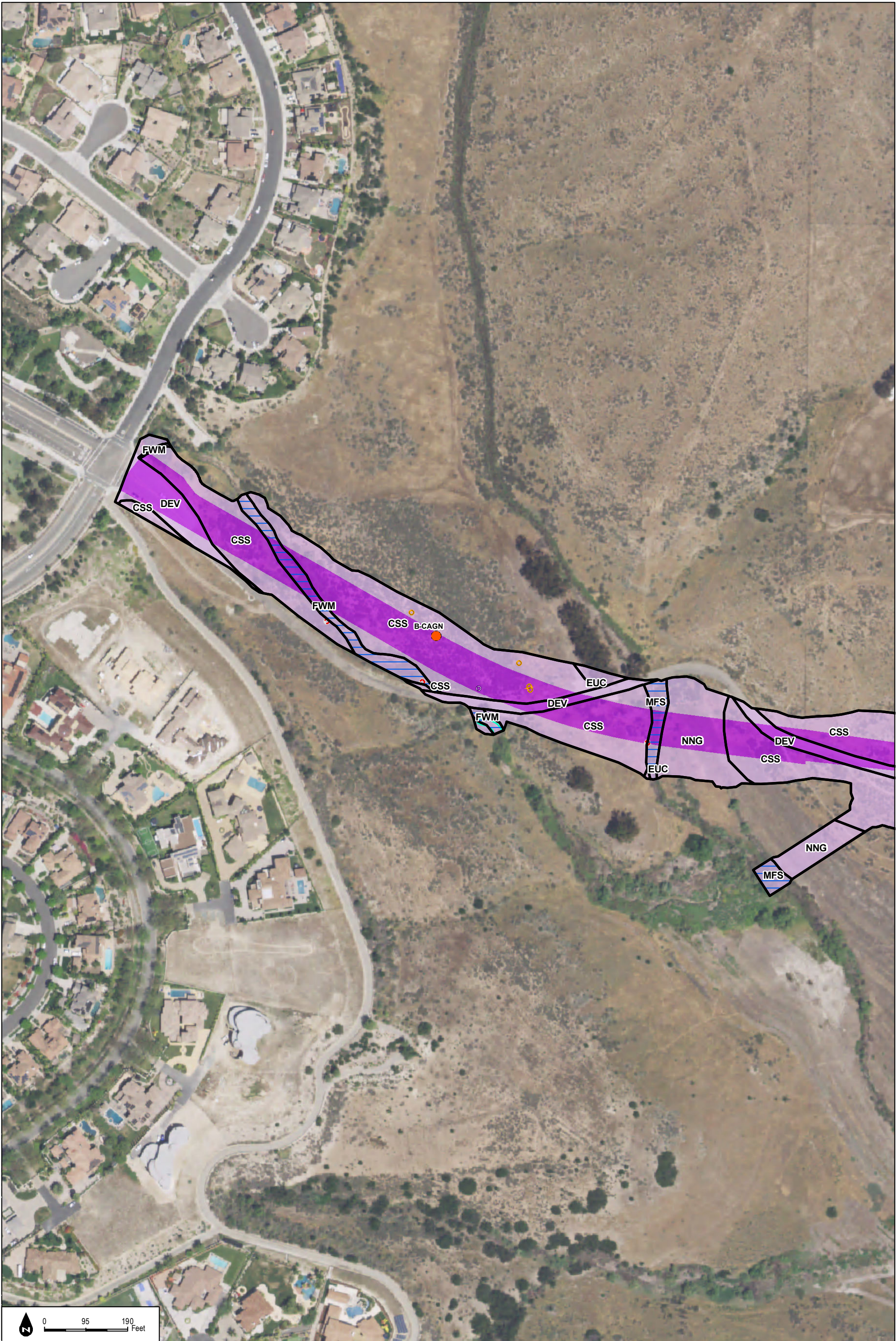


Figure 2.4-19y
Impacts to Biological Resources

INTENTIONALLY LEFT BLANK



INTENTIONALLY LEFT BLANK