

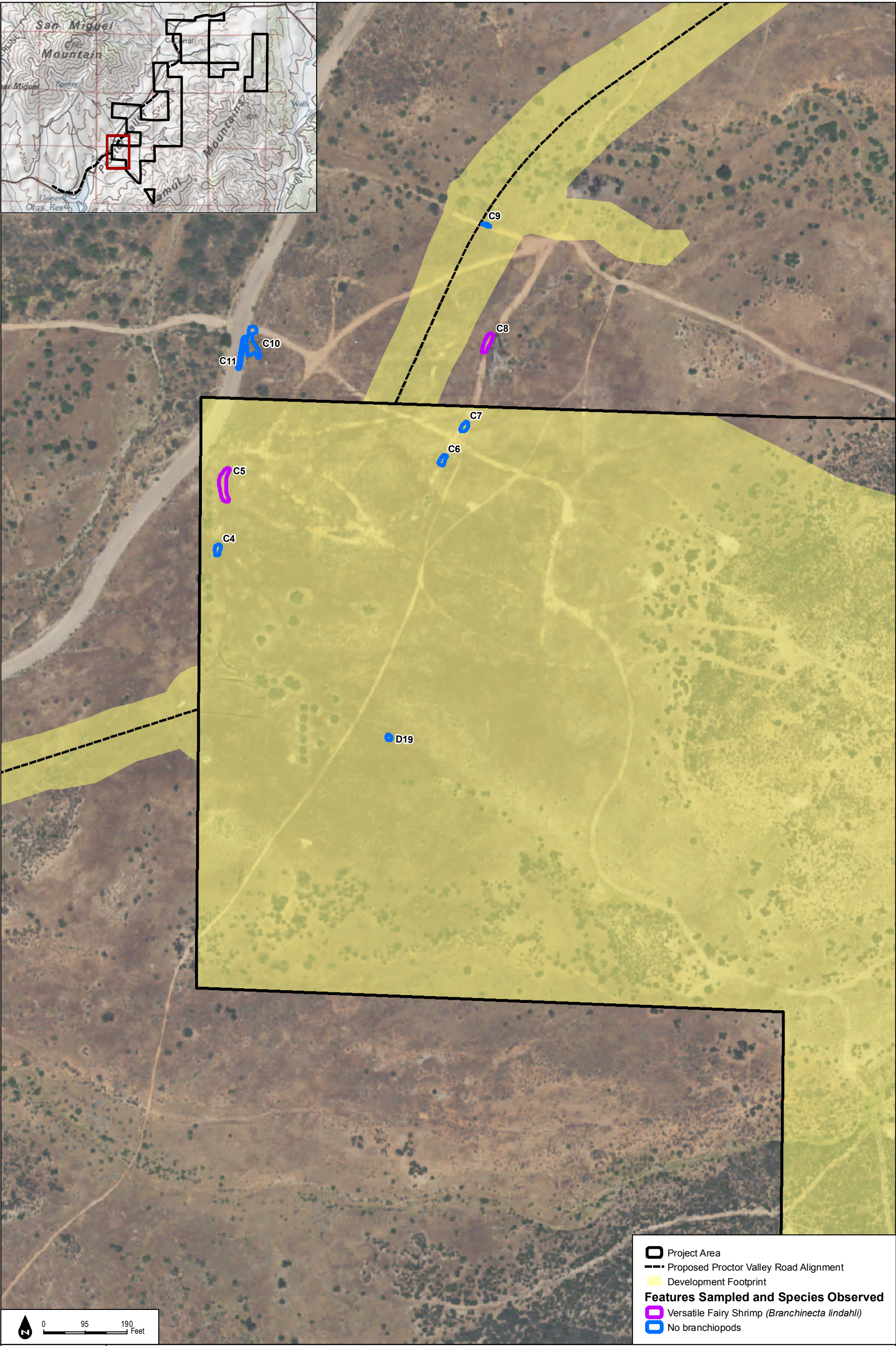
SOURCE: NAIP 2016; Hunsaker 2017

Otay Ranch Village 14 and Planning Areas 16/19

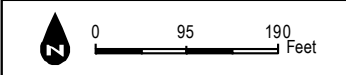
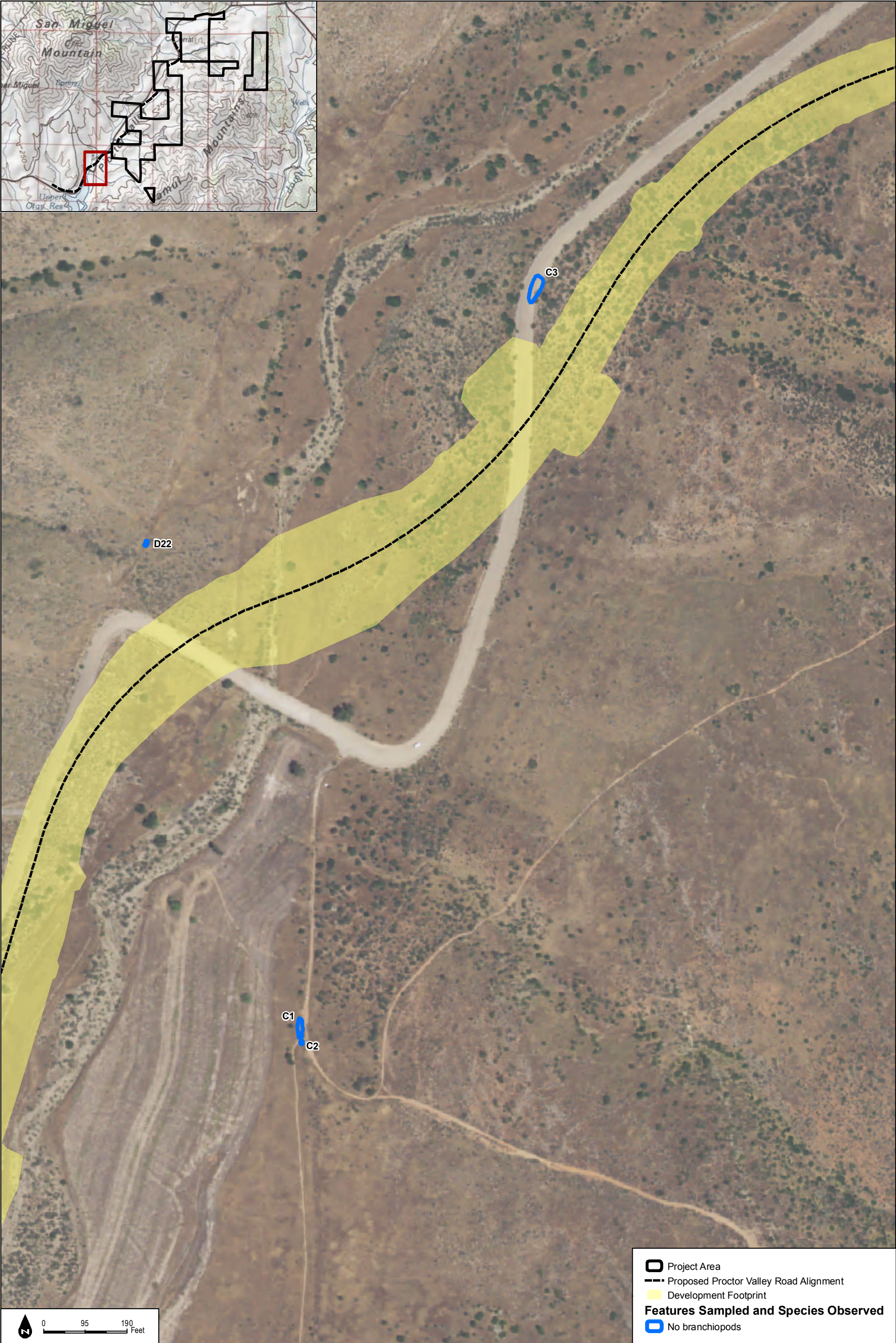
Figure 2.4-8g
Fairy Shrimp Survey Area and Results

NOTE: Survey areas may include additional acreage outside of the Project Area

INTENTIONALLY LEFT BLANK

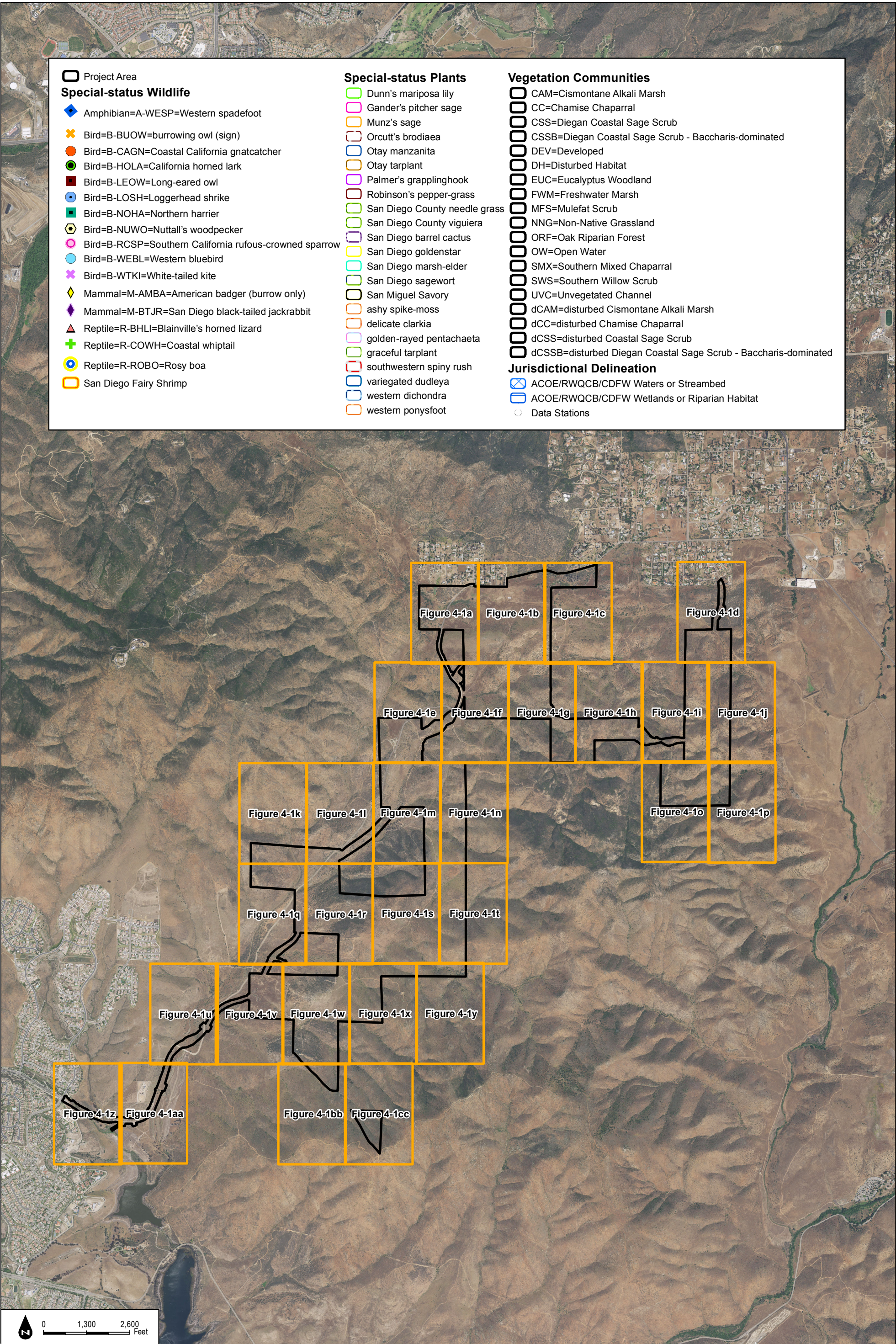


INTENTIONALLY LEFT BLANK



INTENTIONALLY LEFT BLANK

INTENTIONALLY LEFT BLANK



Project Area

Special-status Wildlife

Amphibian=A-WESP=Western spadefoot

Bird=B-BUOW=burrowing owl (sign)

Bird=B-CAGN=Coastal California gnatcatcher

Bird=B-HOLA=California horned lark

Bird=B-LEOW=Long-eared owl

Bird=B-LOSH=Loggerhead shrike

Bird=B-NOHA=Northern harrier

Bird=B-NUWO=Nuttall's woodpecker

Bird=B-RCSP=Southern California rufous-crowned sparrow

Bird=B-WEBL=Western bluebird

Bird=B-WTKI=White-tailed kite

Mammal=M-AMBA=American badger (burrow only)

Mammal=M-BTJR=San Diego black-tailed jackrabbit

Reptile=R-BHLI=Blainville's horned lizard

Reptile=R-COWH=Coastal whiptail

Reptile=R-ROBO=Rosy boa

San Diego Fairy Shrimp

Special-status Plants

Dunn's mariposa lily

Gander's pitcher sage

Munz's sage

Orcutt's brodiaea

Otay manzanita

Otay tarplant

Palmer's grapplinghook

Robinson's pepper-grass

San Diego County needle grass

San Diego County viguiera

San Diego barrel cactus

San Diego goldenstar

San Diego marsh-elder

San Diego sagewort

San Miguel Savory

ashy spike-moss

delicate clarkia

golden-rayed pentachaeta

graceful tarplant

southwestern spiny rush

variegated dudleya

western dichondra

western ponysfoot

Vegetation Communities

CAM=Cismontane Alkali Marsh

CC=Chamise Chaparral

CSS=Diegan Coastal Sage Scrub

CSSB=Diegan Coastal Sage Scrub - Baccharis-dominated

DEV=Developed

DH=Disturbed Habitat

EUC=Eucalyptus Woodland

FWM=Freshwater Marsh

MFS=Mulefat Scrub

NNG=Non-Native Grassland

ORF=Oak Riparian Forest

OW=Open Water

SMX=Southern Mixed Chaparral

SWS=Southern Willow Scrub

UVC=Unvegetated Channel

dCAM=disturbed Cismontane Alkali Marsh

dCC=disturbed Chamise Chaparral

dCSS=disturbed Coastal Sage Scrub

dCSSB=disturbed Diegan Coastal Sage Scrub - Baccharis-dominated

Jurisdictional Delineation

ACOE/RWQCB/CDFW Waters or Streambed

ACOE/RWQCB/CDFW Wetlands or Riparian Habitat

Data Stations

SOURCE: Hunsaker 2017

DUDEK

Otay Ranch Village 14 and Planning Areas 16/19

FIGURE 2.4-10
Biological Resources - Legend

INTENTIONALLY LEFT BLANK

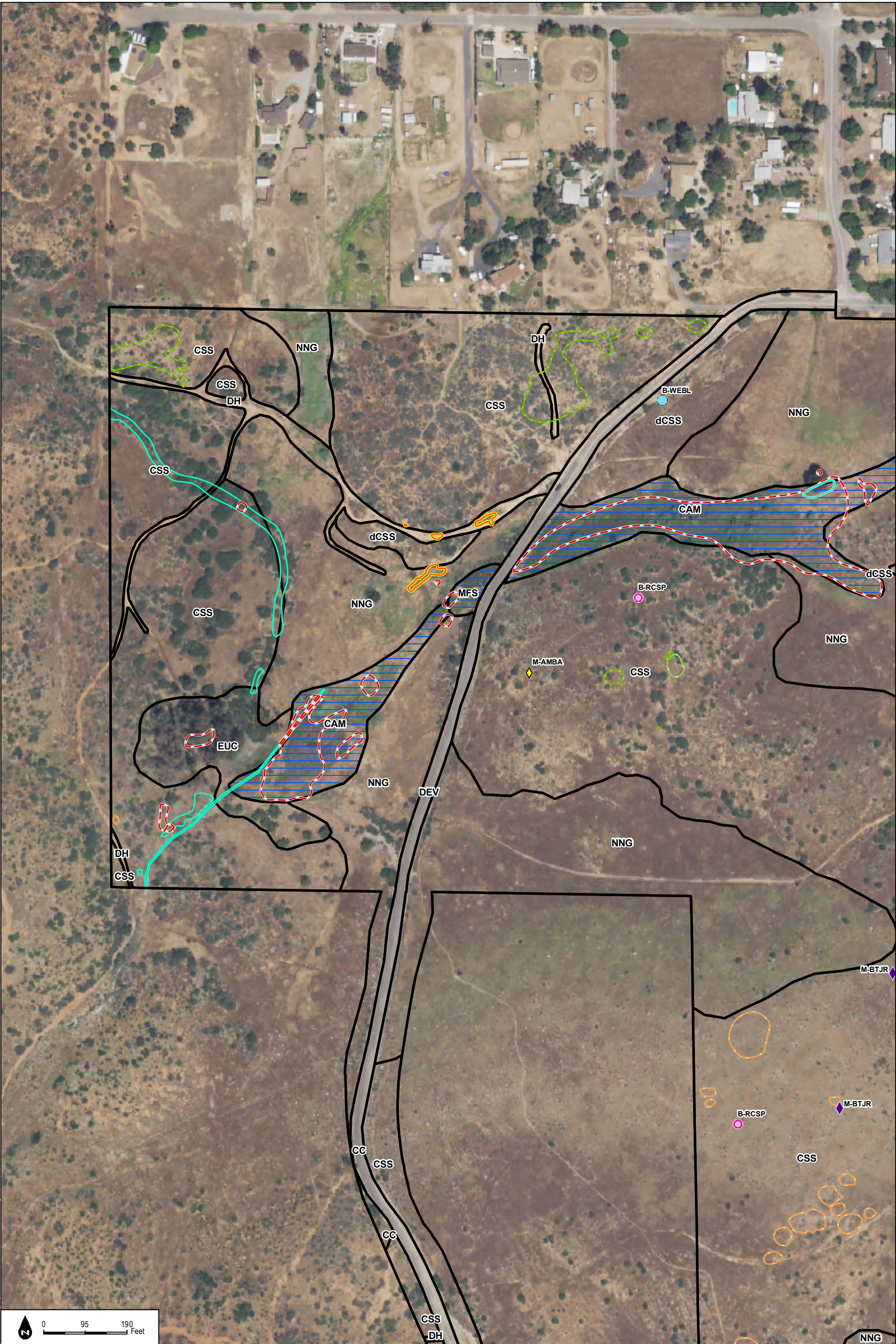
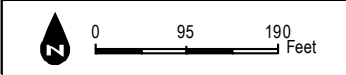
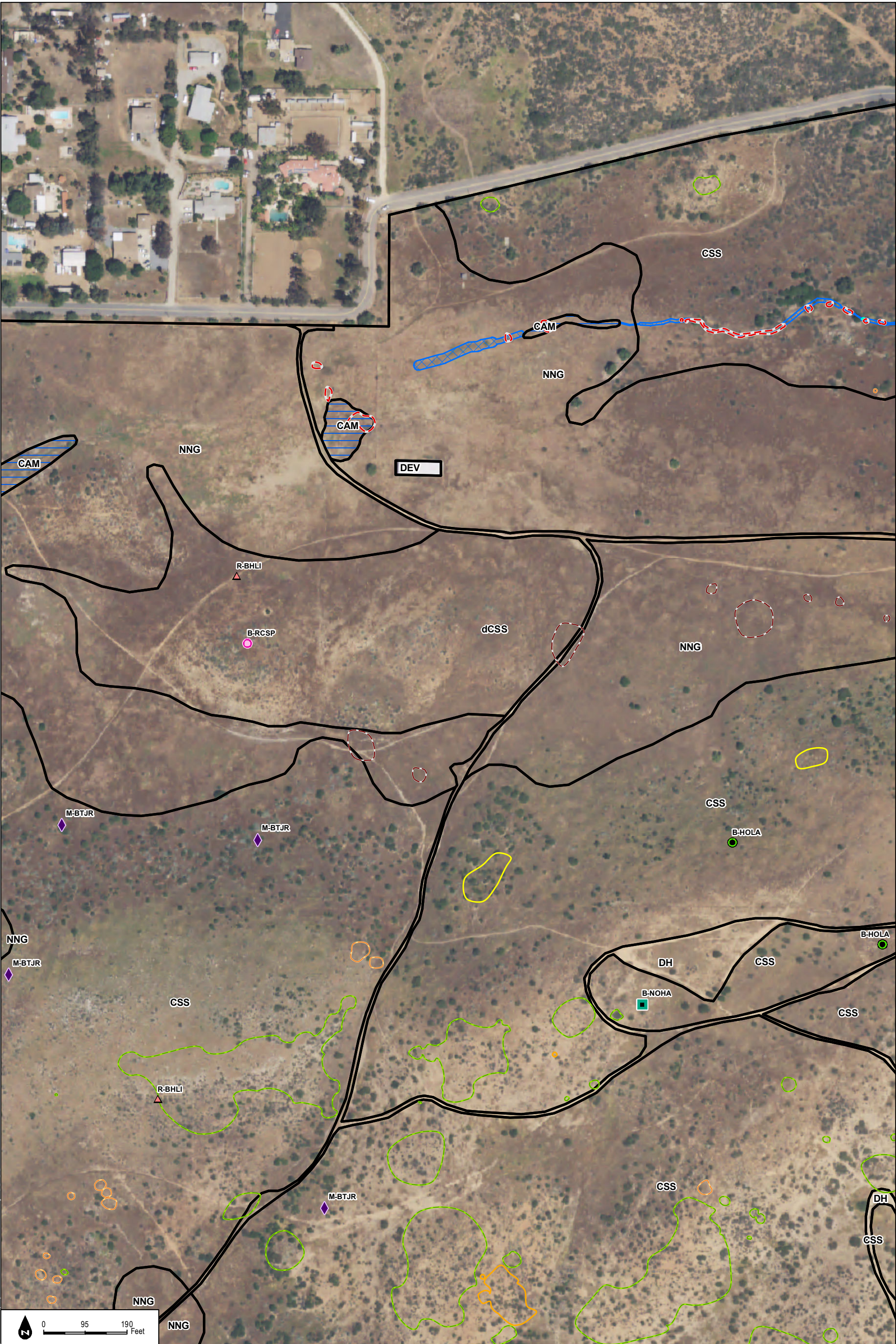


Figure 2.4-10a
Biological Resources

INTENTIONALLY LEFT BLANK



INTENTIONALLY LEFT BLANK

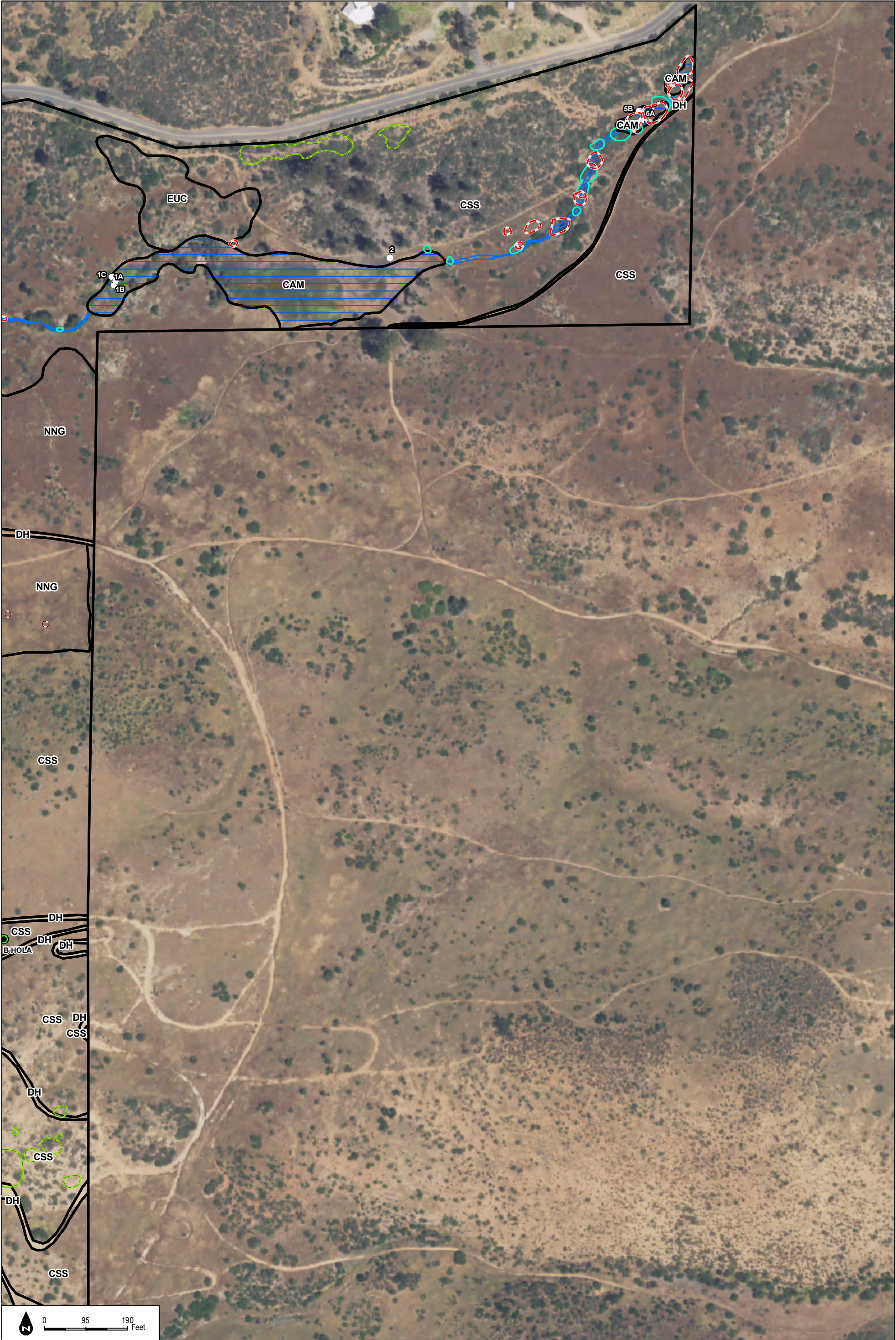


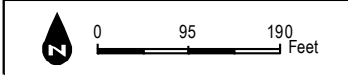
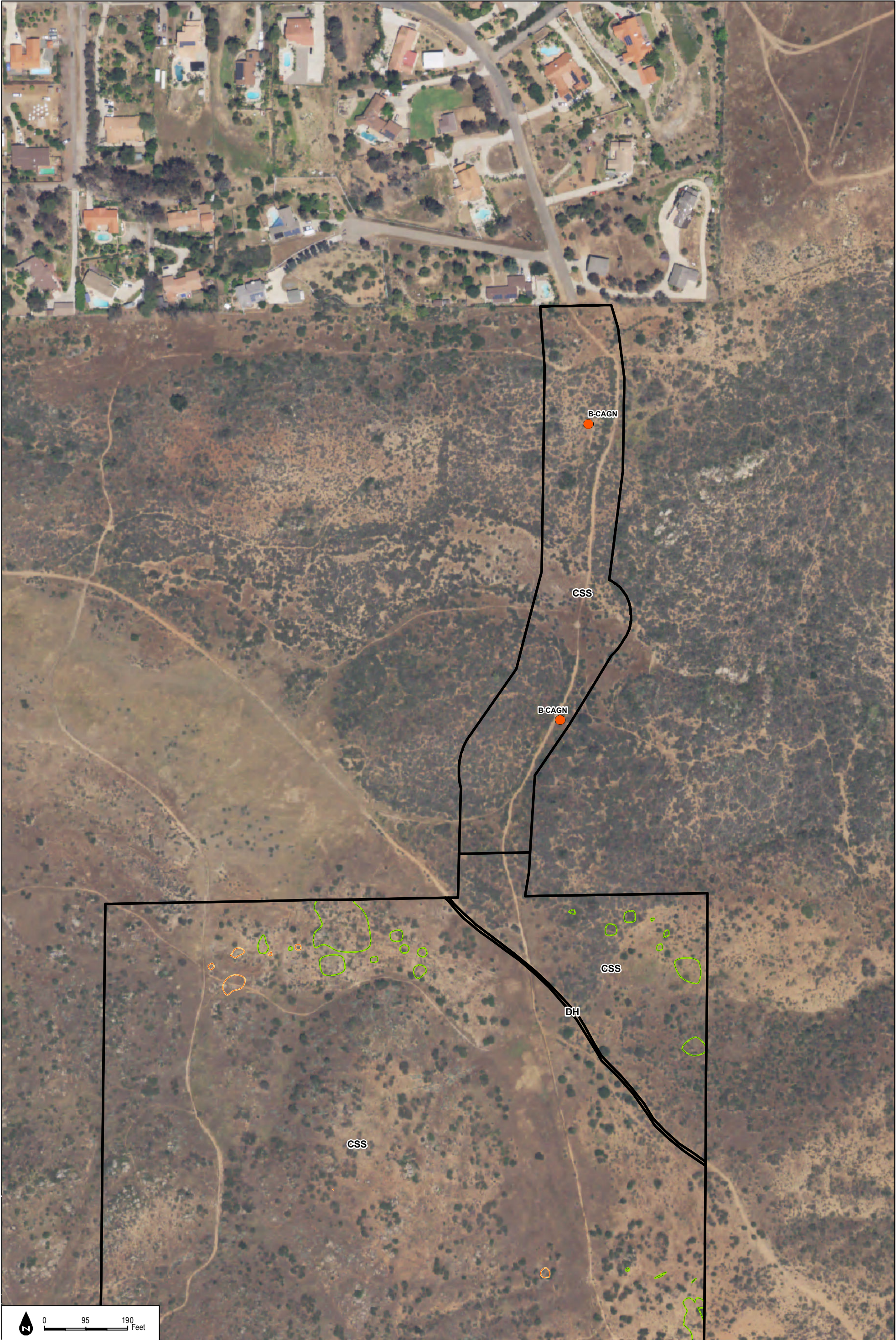
Figure 2.4-10c
Biological Resources

SOURCE: NAIP 2016; Hunsaker 2017

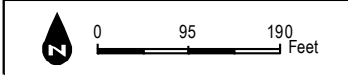
Otay Ranch Village 14 and Planning Areas 16/19

DUDEK

INTENTIONALLY LEFT BLANK



INTENTIONALLY LEFT BLANK



INTENTIONALLY LEFT BLANK

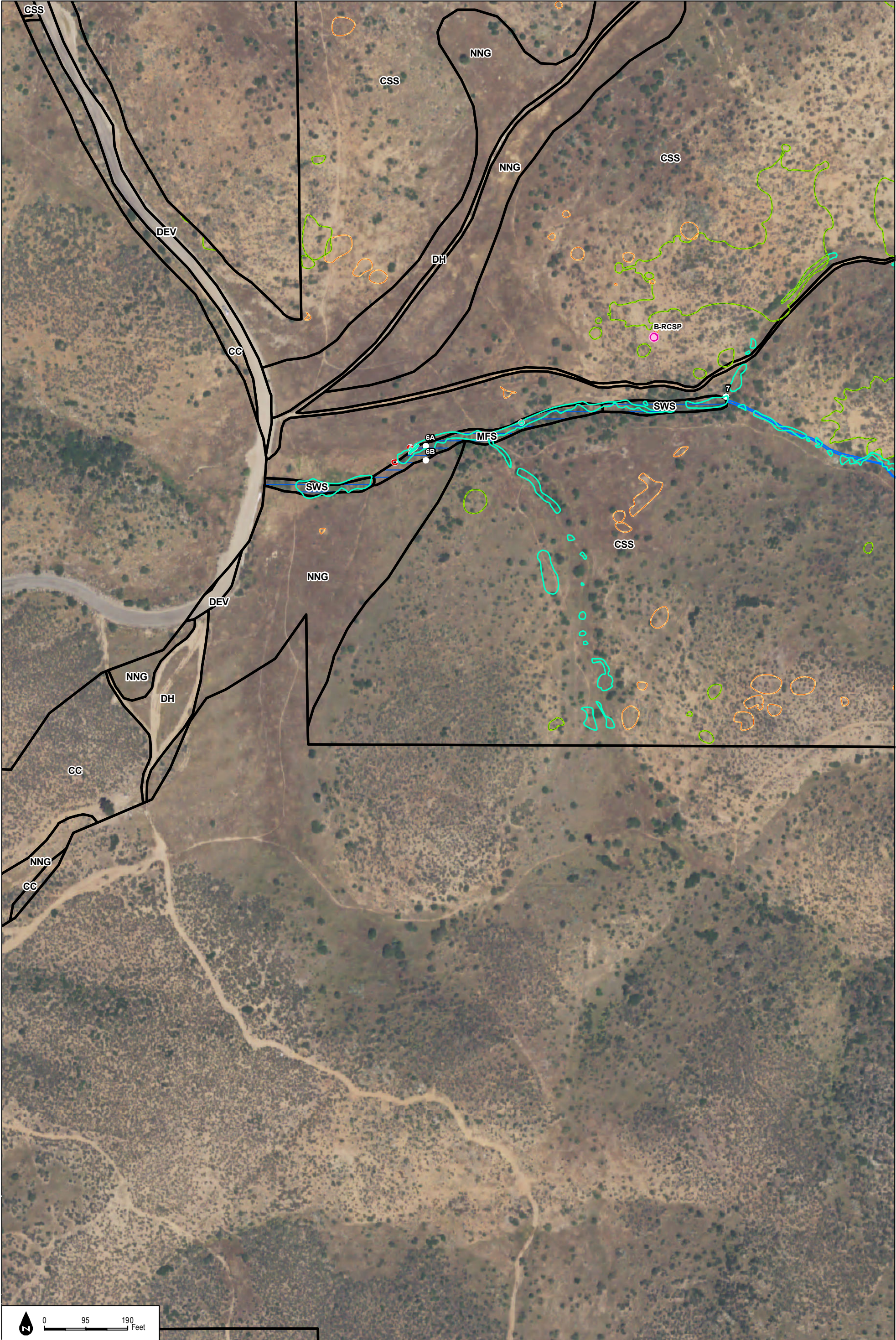


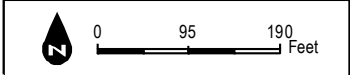
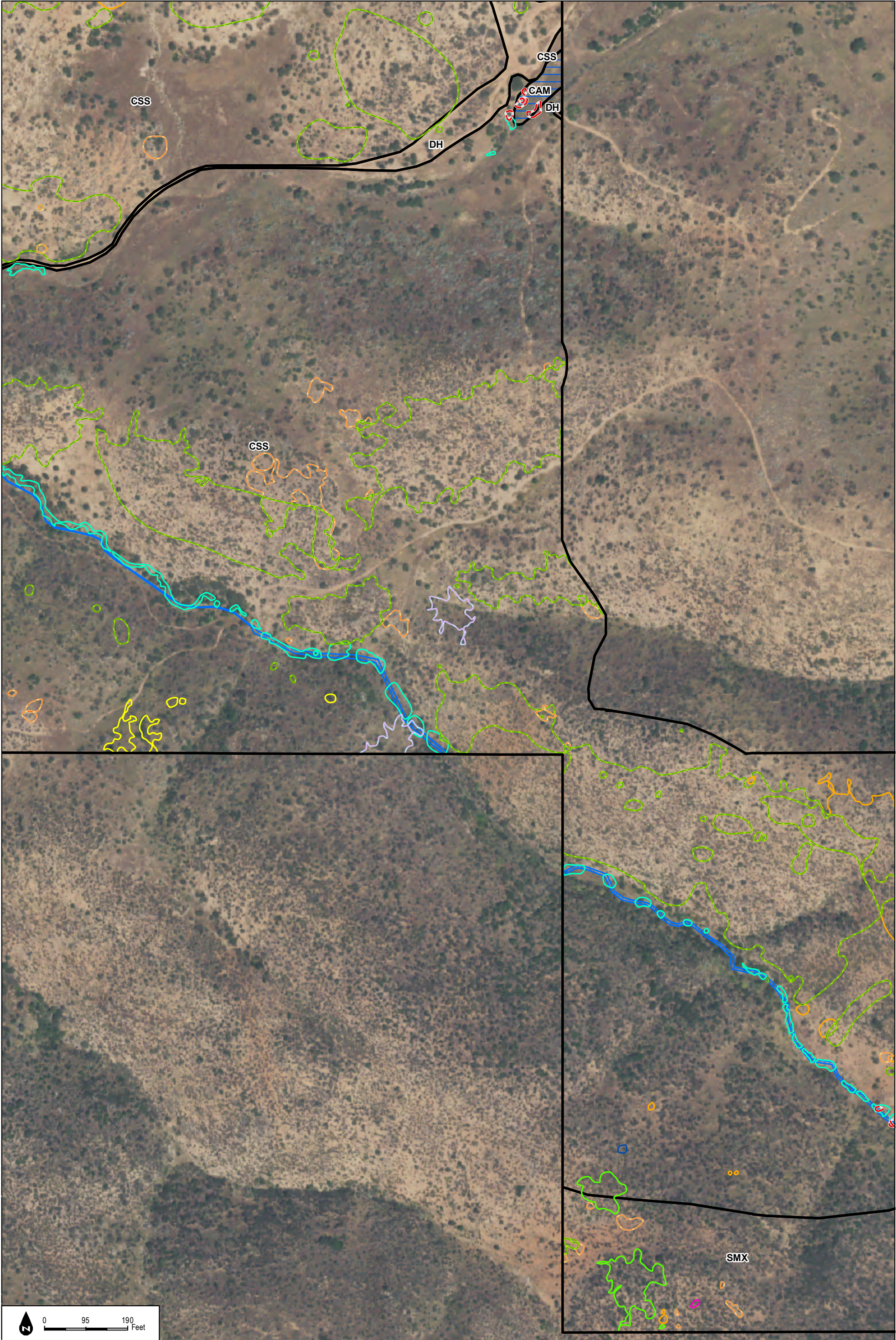
Figure 2.4-10f
Biological Resources

SOURCE: NAIP 2016; Hunsaker 2017

Otay Ranch Village 14 and Planning Areas 16/19

DUDEK

INTENTIONALLY LEFT BLANK



INTENTIONALLY LEFT BLANK

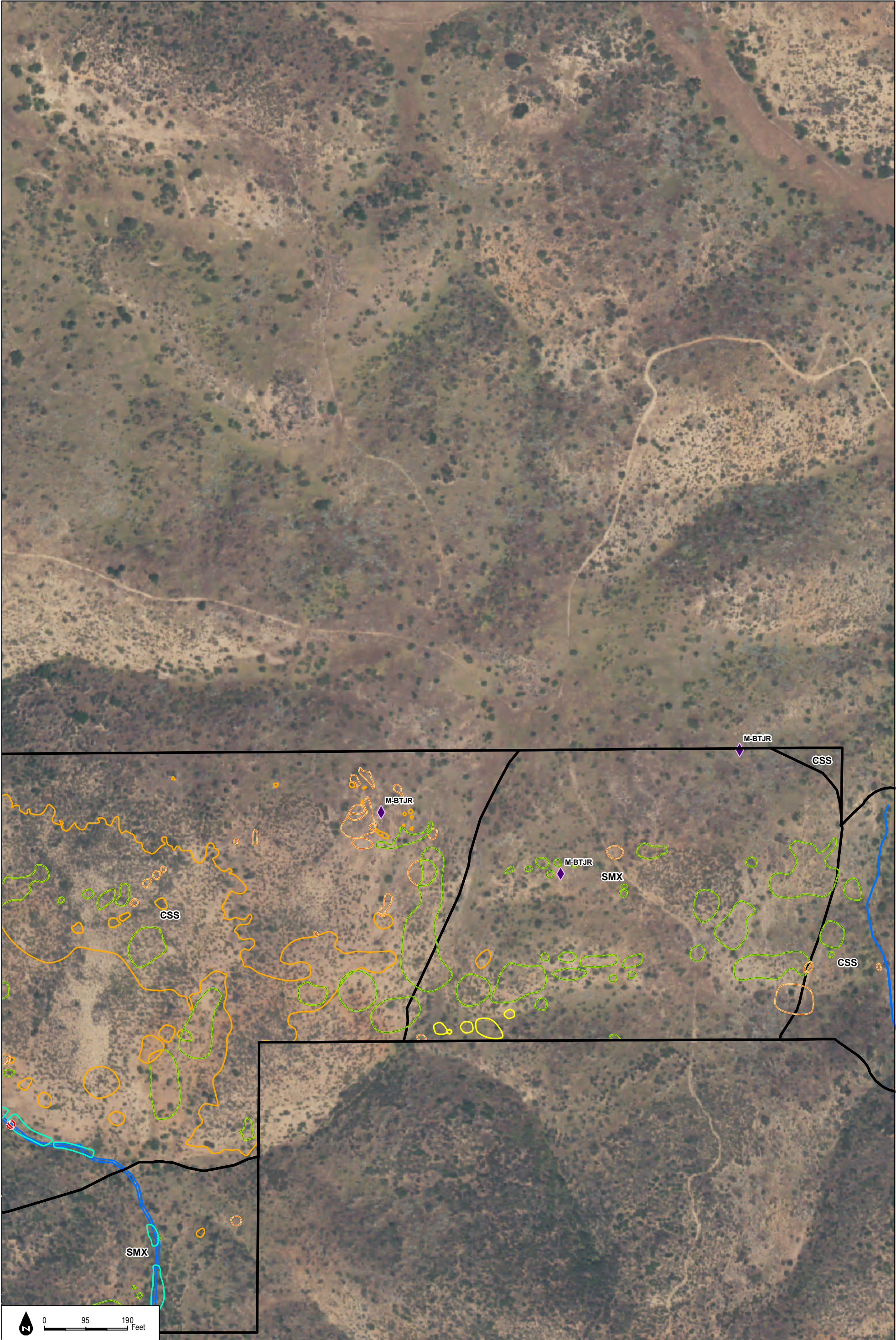


Figure 2.4-10h
Biological Resources

INTENTIONALLY LEFT BLANK