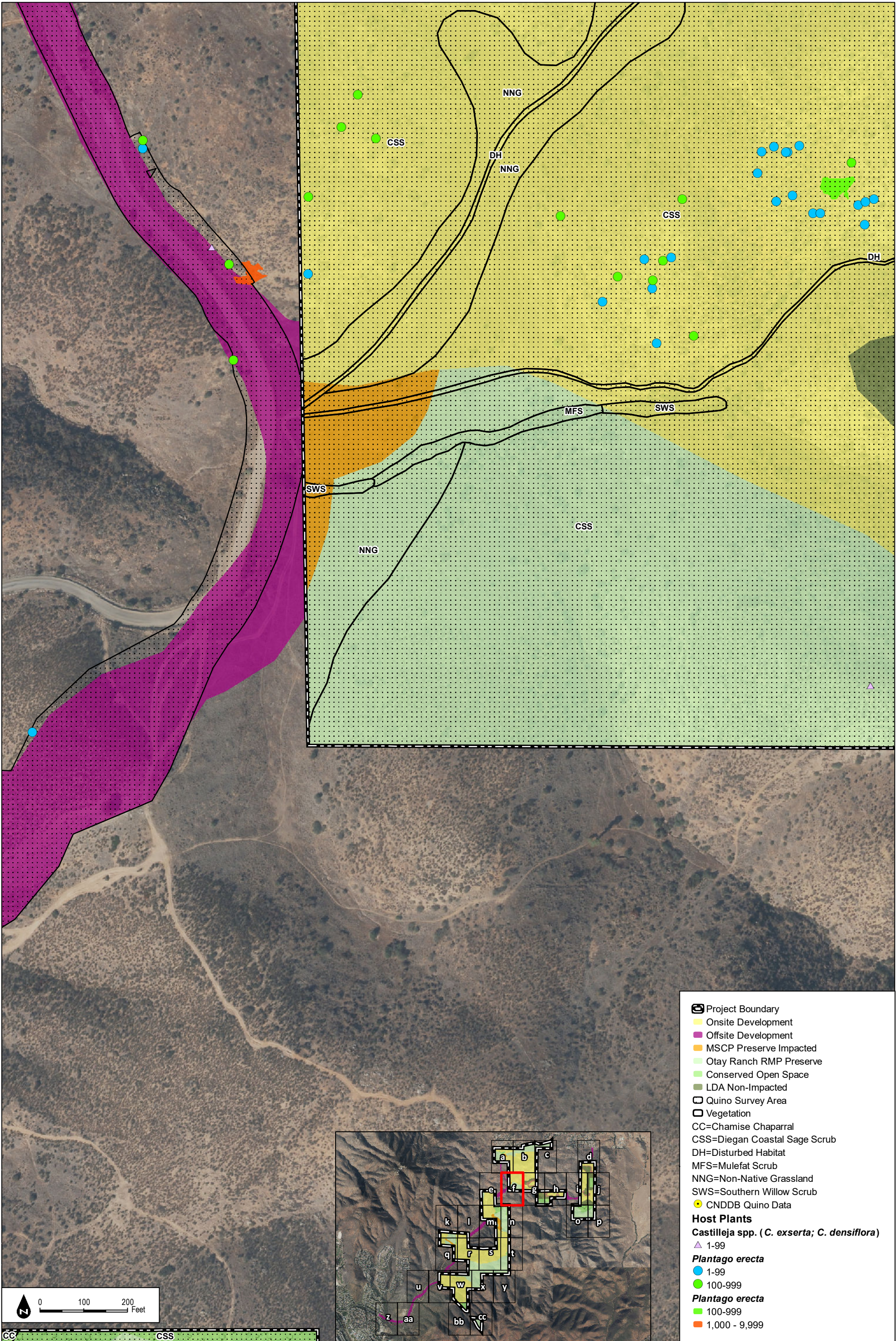


SOURCE: NAIP 2016, Hunsacker 2017, HELIX 2016

Figure 2.4-12e
2016 Quino Host Plant Mapping and Historical Locations

INTENTIONALLY LEFT BLANK



SOURCE: NAIP 2016, Hunsacker 2017, HELIX 2016

DUDEK

Otay Ranch Village 14 and Planning Areas 16/19

Figure 2.4-12f
2016 Quino Host Plant Mapping and Historical Locations

INTENTIONALLY LEFT BLANK

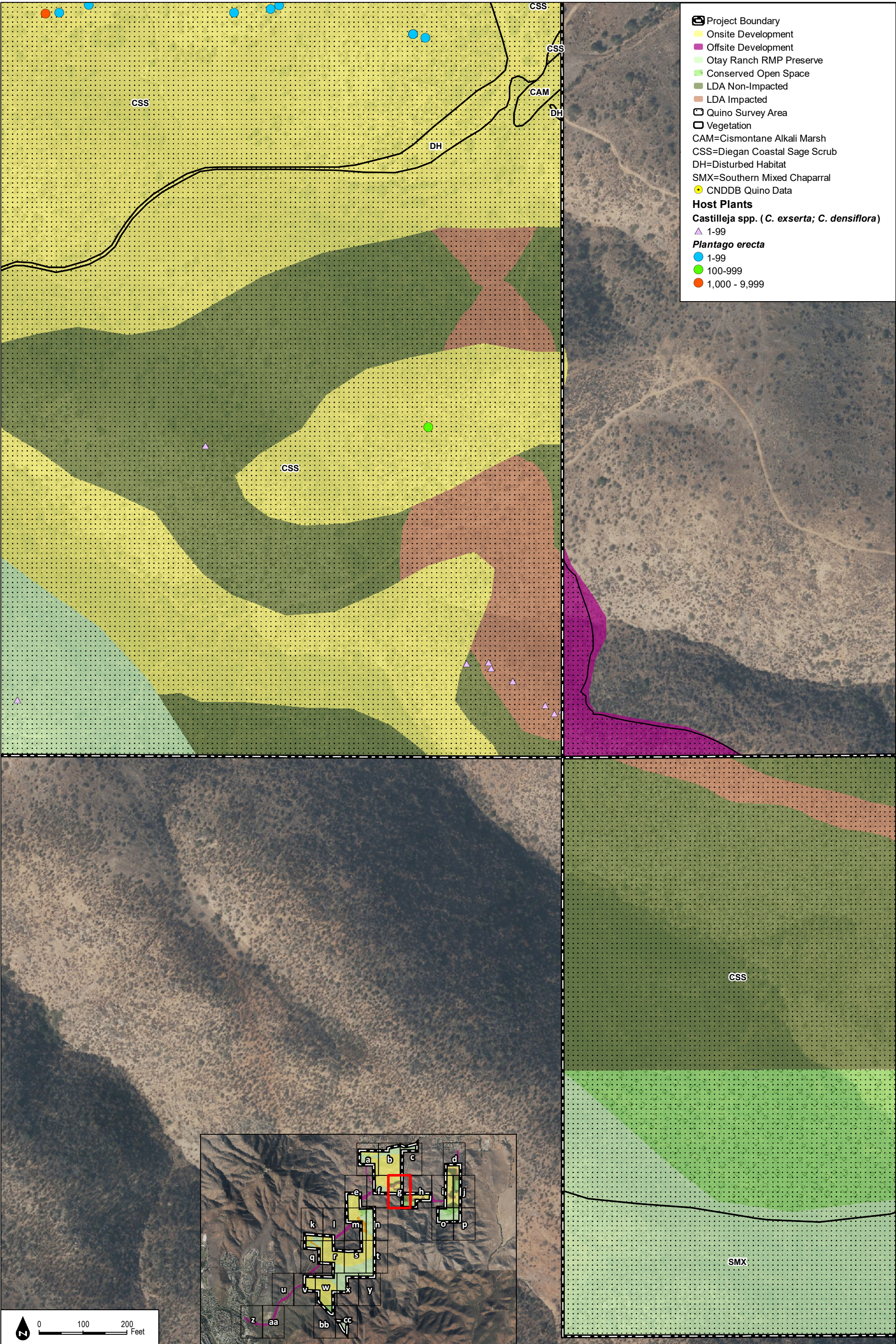


Figure 2.4-12g
2016 Quino Host Plant Mapping and Historical Locations

SOURCE: NAIP 2016, Hunsacker 2017, HELIX 2016

DUDEK

Otay Ranch Village 14 and Planning Areas 16/19

INTENTIONALLY LEFT BLANK

INTENTIONALLY LEFT BLANK

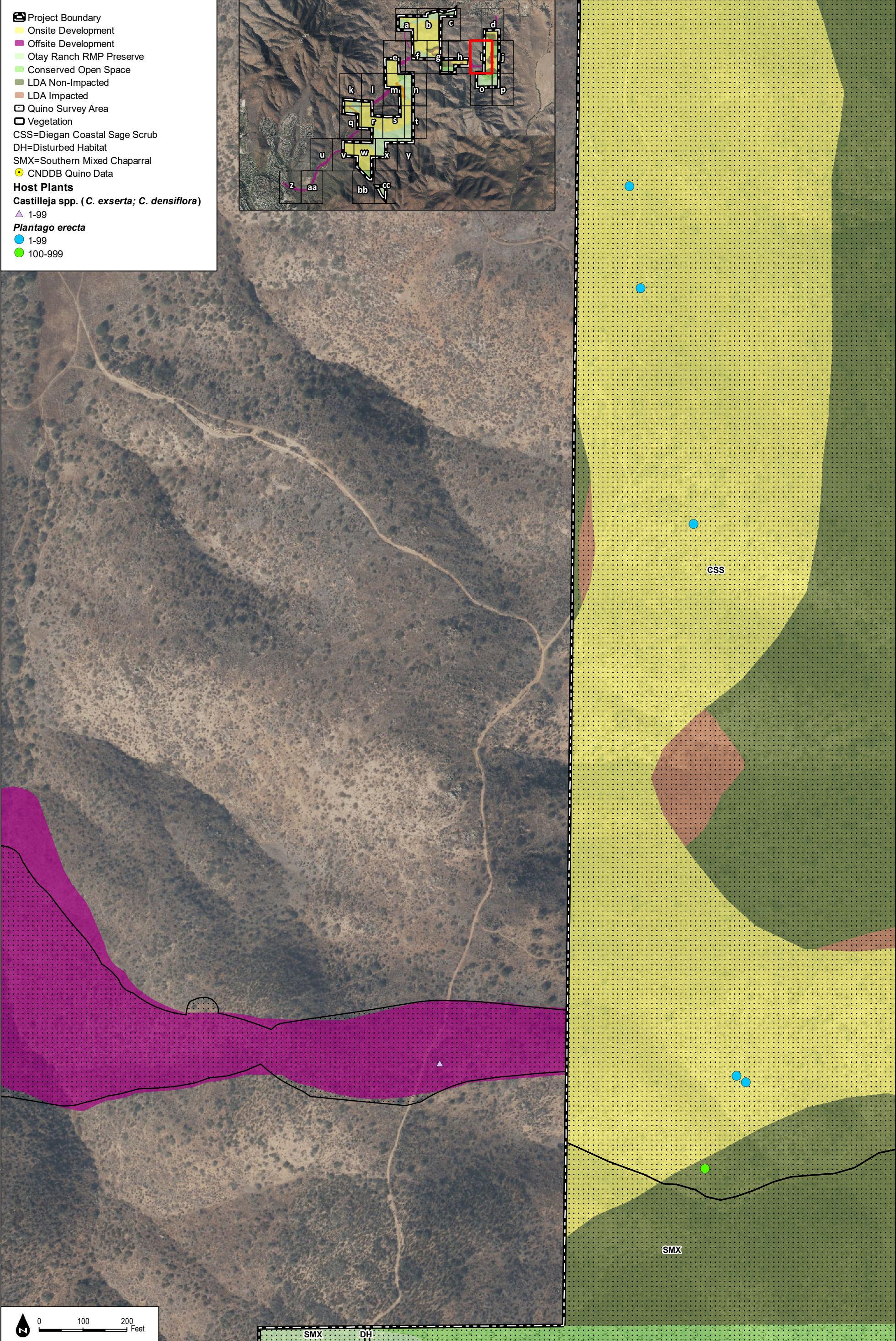
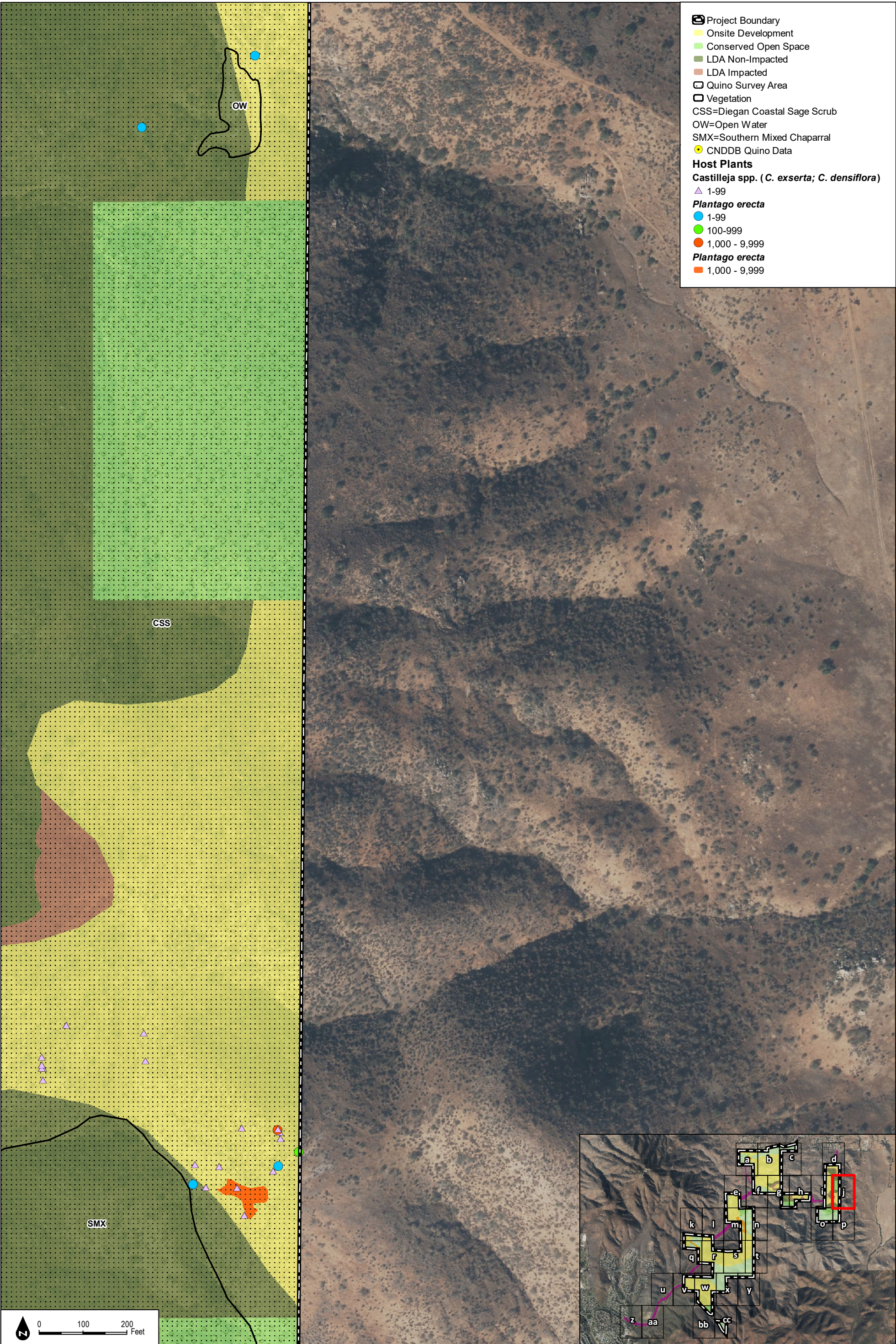


Figure 2.4-12i
2016 Quino Host Plant Mapping and Historical Locations

INTENTIONALLY LEFT BLANK



SOURCE: NAIP 2016, Hunsacker 2017, HELIX 2016

2016 Quino Host Plant Mapping and Historical Locations

INTENTIONALLY LEFT BLANK

Project Boundary

Onsite Development

MSCP Preserve Impacted

Otay Ranch RMP Preserve

Conserved Open Space

Quino Survey Area

Vegetation

CAM=Cismontane Alkali Marsh

CC=Chamise Chaparral

CNDDDB Quino Data

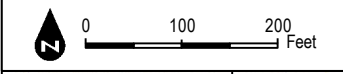
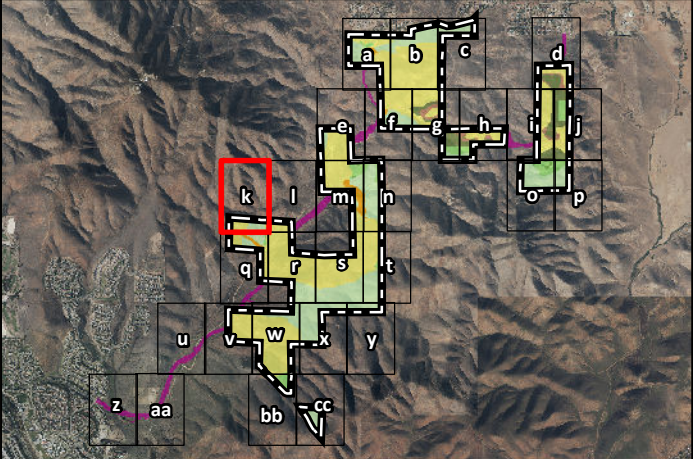
Host Plants

Castilleja spp. (*C. exserta*; *C. densiflora*)

1-99

Plantago erecta

1,000 - 9,999



INTENTIONALLY LEFT BLANK