

SOURCE: NAIP 2016, Hunsacker 2017, HELIX 2016

Figure 2.4-12aa
2016 Quino Host Plant Mapping and Historical Locations

Otay Ranch Village 14 and Planning Areas 16/19

INTENTIONALLY LEFT BLANK



SOURCE: NAIP 2016, Hunsacker 2017, HELIX 2016

Figure 2.4-12bb
2016 Quino Host Plant Mapping and Historical Locations

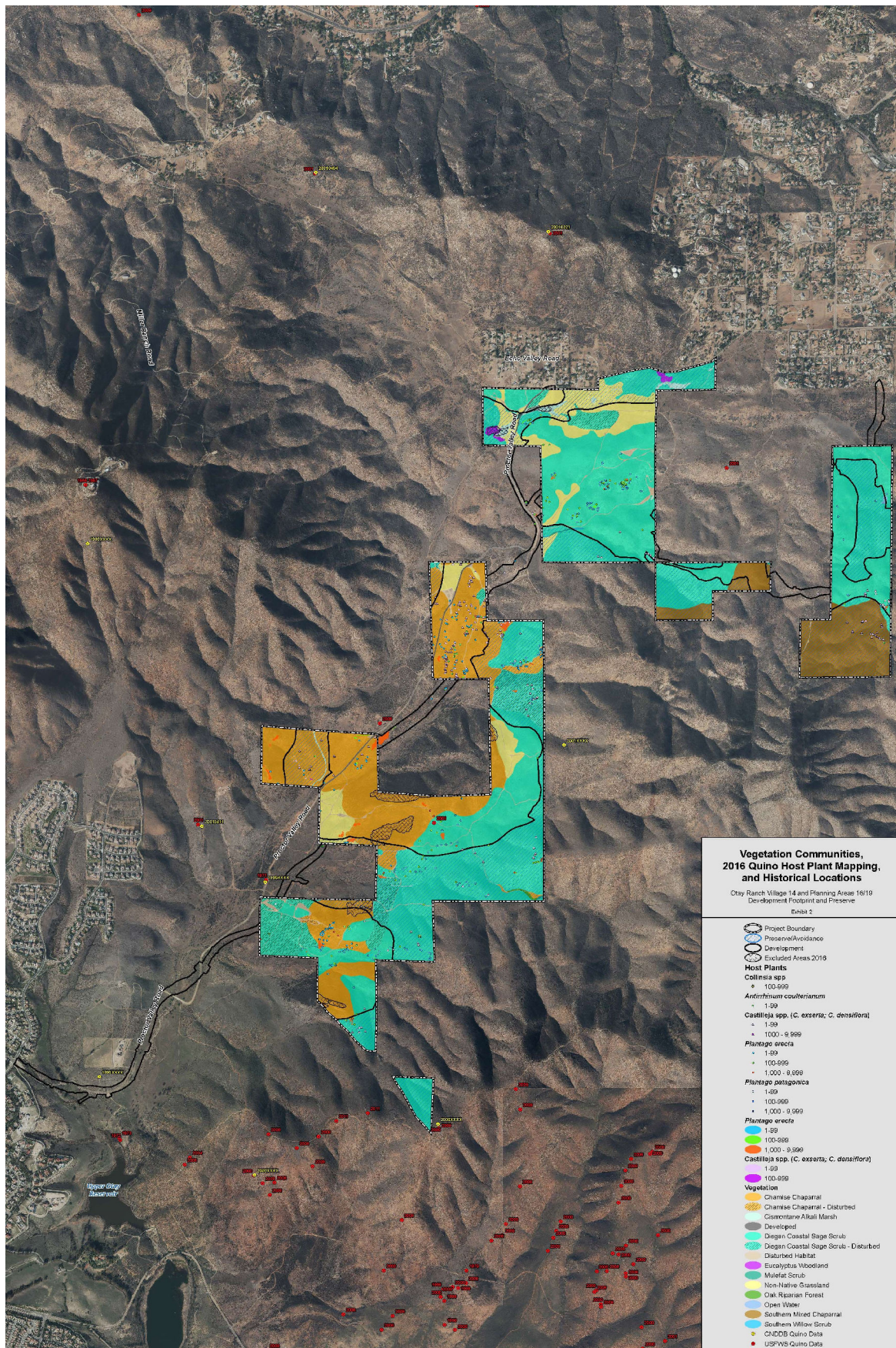
INTENTIONALLY LEFT BLANK



SOURCE: NAIP 2016, Hunsacker 2017, HELIX 2016

Figure 2.4-12cc
2016 Quino Host Plant Mapping and Historical Locations

INTENTIONALLY LEFT BLANK



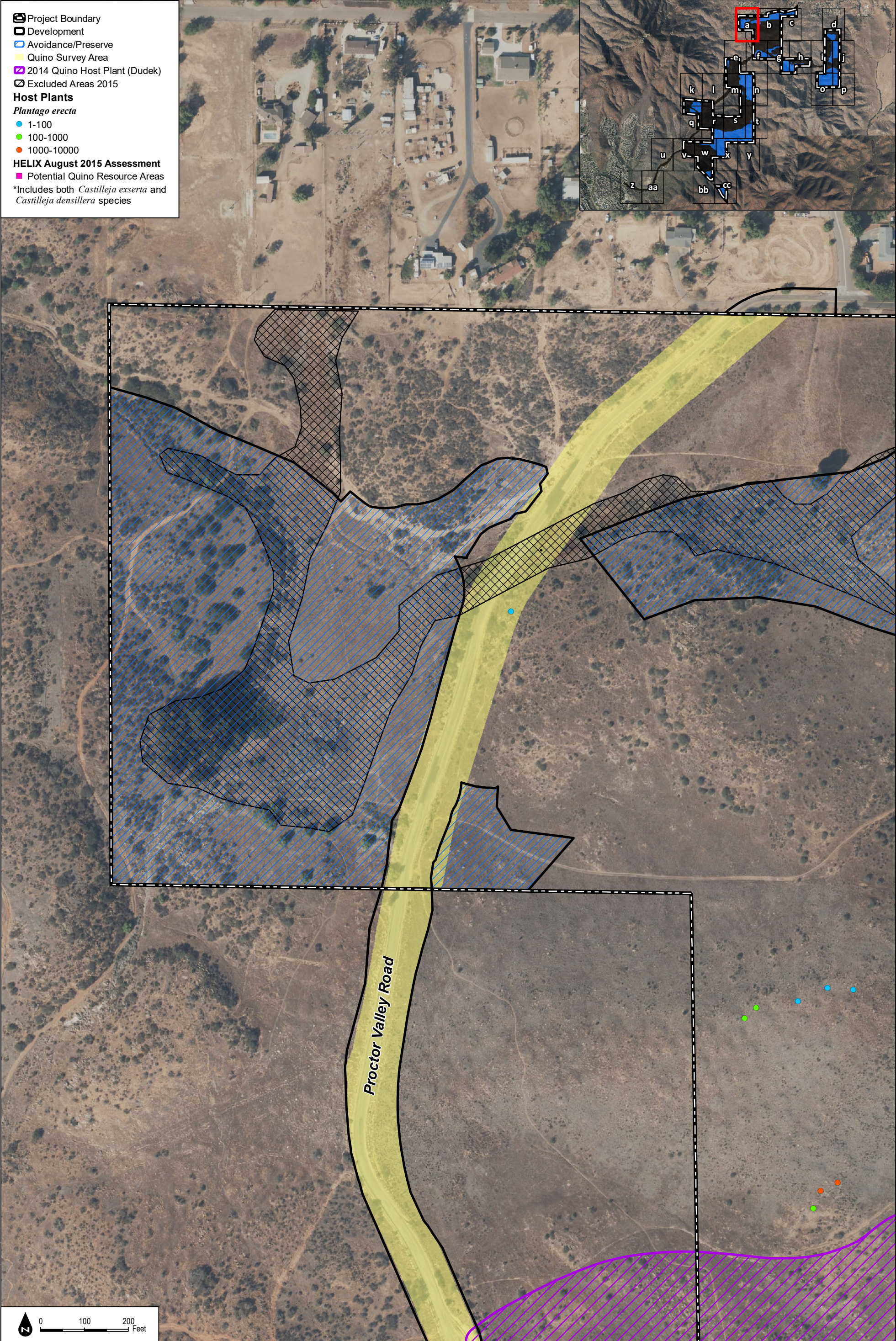
SOURCE: Helix 2017

FIGURE 2.4-13

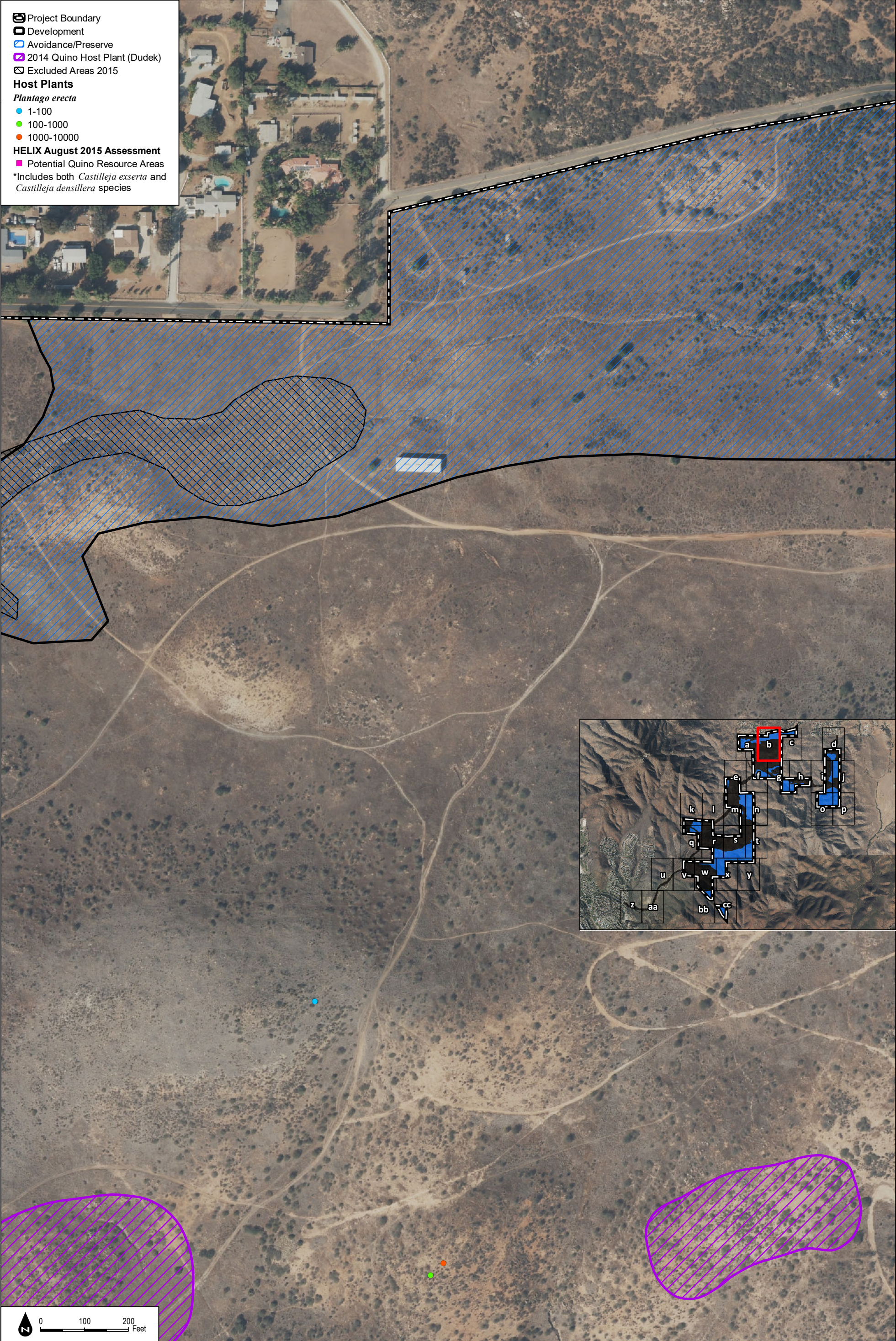
Vegetation Communities, 2016 Quino Host Plant, and Historical Locations

Otay Ranch Village 14 and Planning Areas 16/19

INTENTIONALLY LEFT BLANK



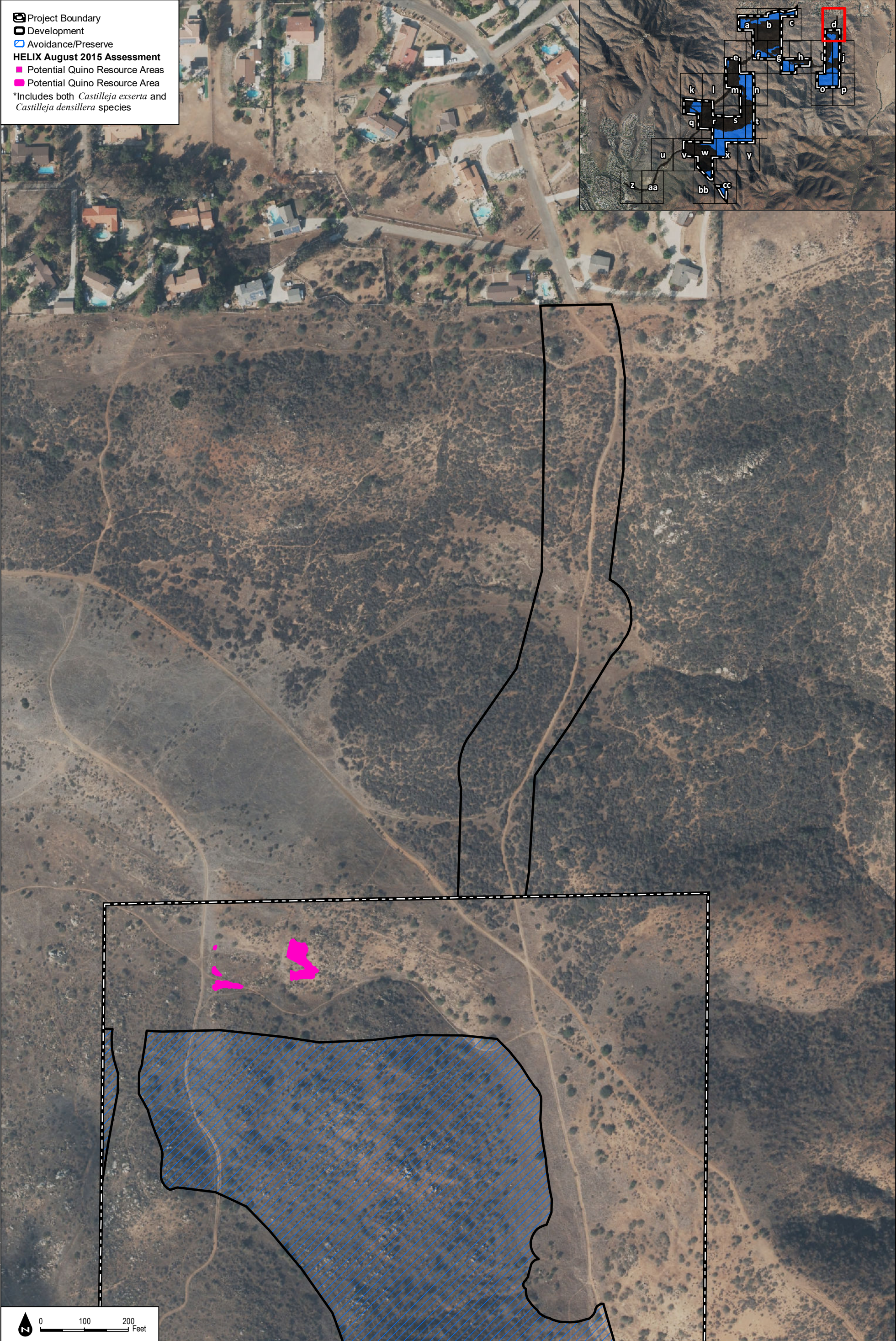
INTENTIONALLY LEFT BLANK



INTENTIONALLY LEFT BLANK



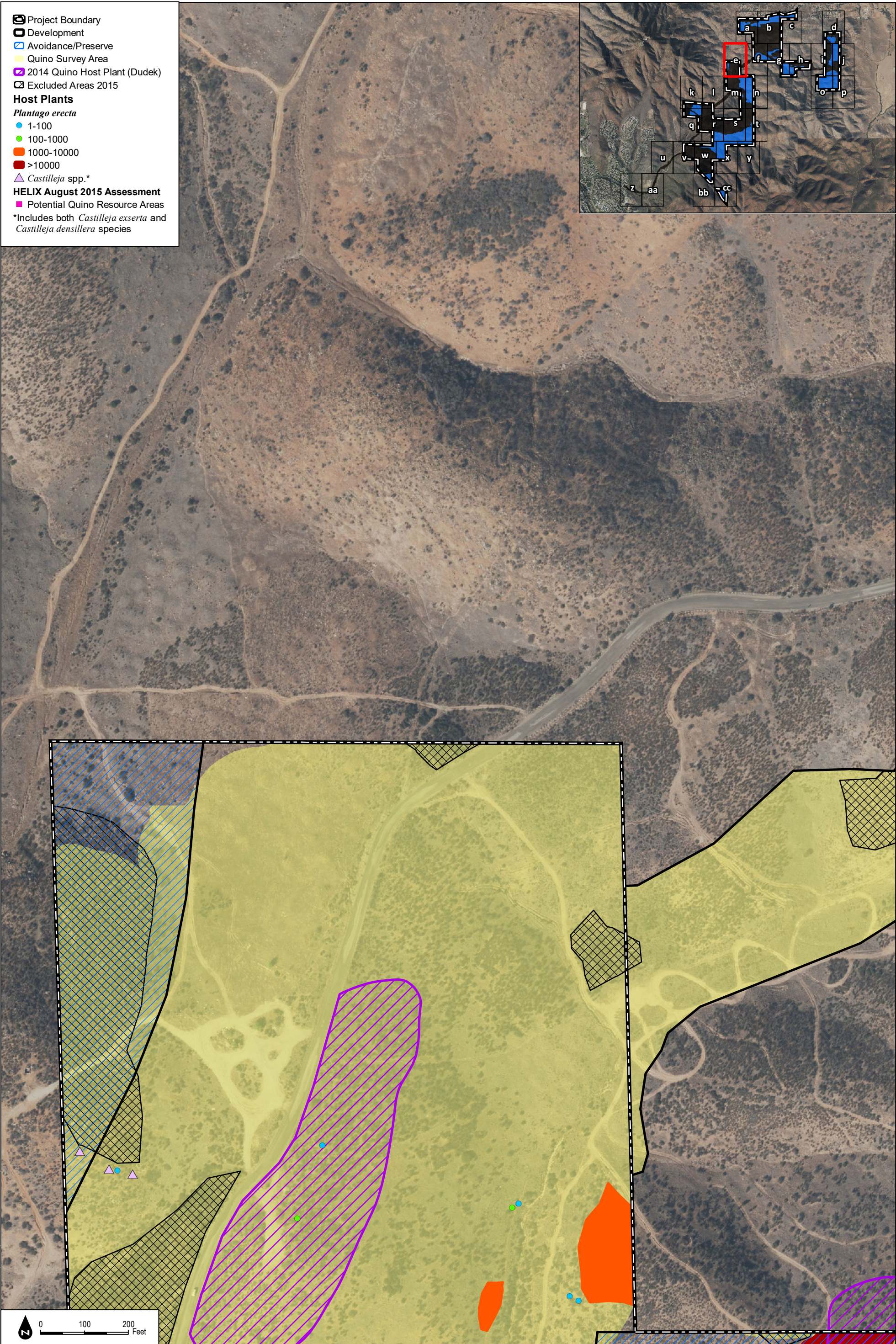
INTENTIONALLY LEFT BLANK



SOURCE: NAIP 2016, Hunsacker 2017, HELIX 2016

Figure 2.4-13d
2015 Quino Host Plant Mapping, Potential Resource Areas, and Historical Locations

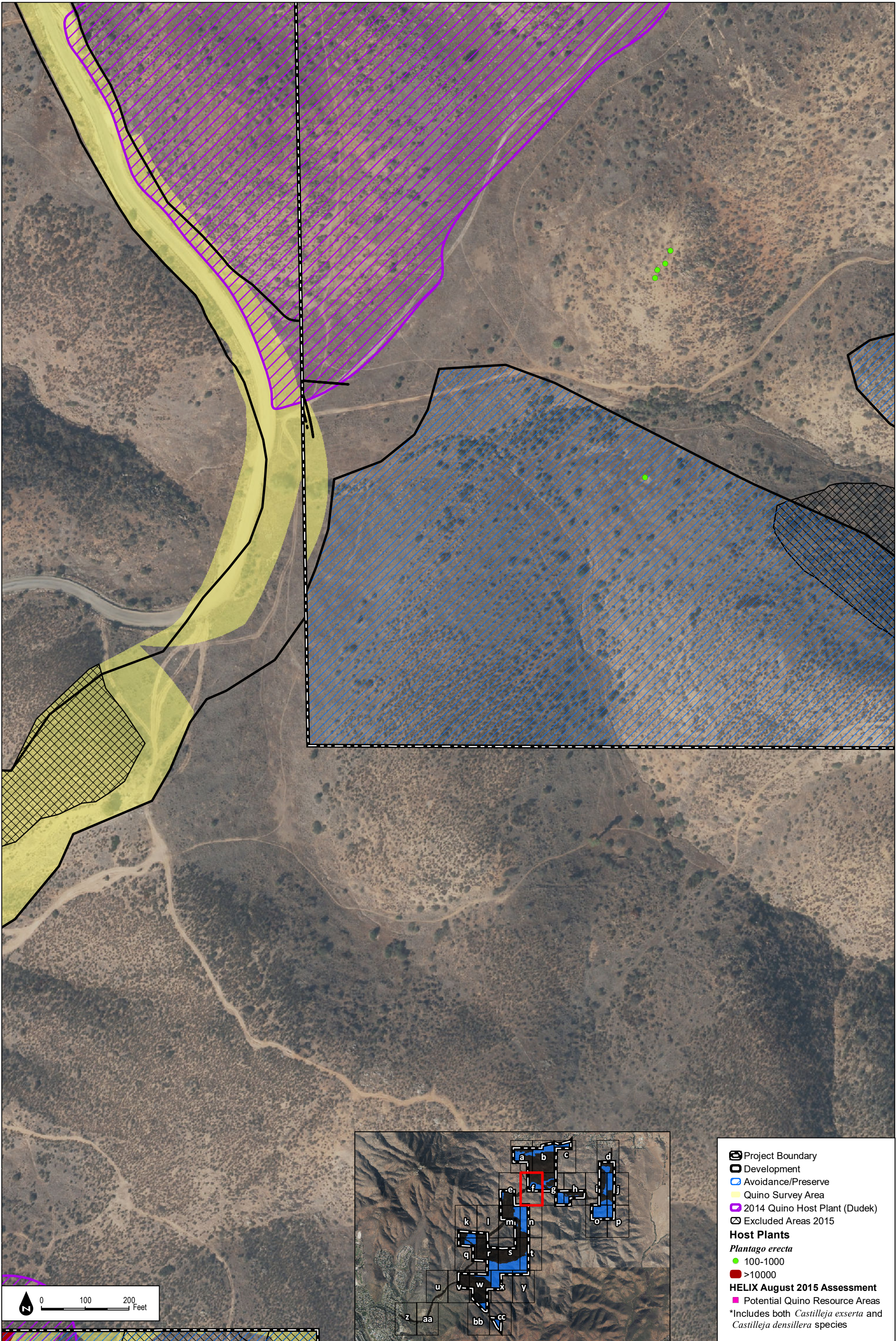
INTENTIONALLY LEFT BLANK



SOURCE: NAIP 2016, Hunsacker 2017, HELIX 2016

Figure 2.4-13e
2015 Quino Host Plant Mapping, Potential Resource Areas, and Historical Locations

INTENTIONALLY LEFT BLANK



SOURCE: NAIP 2016, Hunsacker 2017, HELIX 2016

Figure 2.4-13f
2015 Quino Host Plant Mapping, Potential Resource Areas, and Historical Locations

INTENTIONALLY LEFT BLANK



SOURCE: NAIP 2016, Hunsacker 2017, HELIX 2016

Figure 2.4-13g
2015 Quino Host Plant Mapping, Potential Resource Areas, and Historical Locations

INTENTIONALLY LEFT BLANK



SOURCE: NAIP 2016, Hunsacker 2017, HELIX 2016

Figure 2.4-13h
2015 Quino Host Plant Mapping, Potential Resource Areas, and Historical Locations

INTENTIONALLY LEFT BLANK



Project Boundary
Development
Avoidance/Preserve
HELIX August 2015 Assessment
Potential Quino Resource Areas
Potential Quino Resource Area
*Includes both *Castilleja exserta* and *Castilleja densillera* species

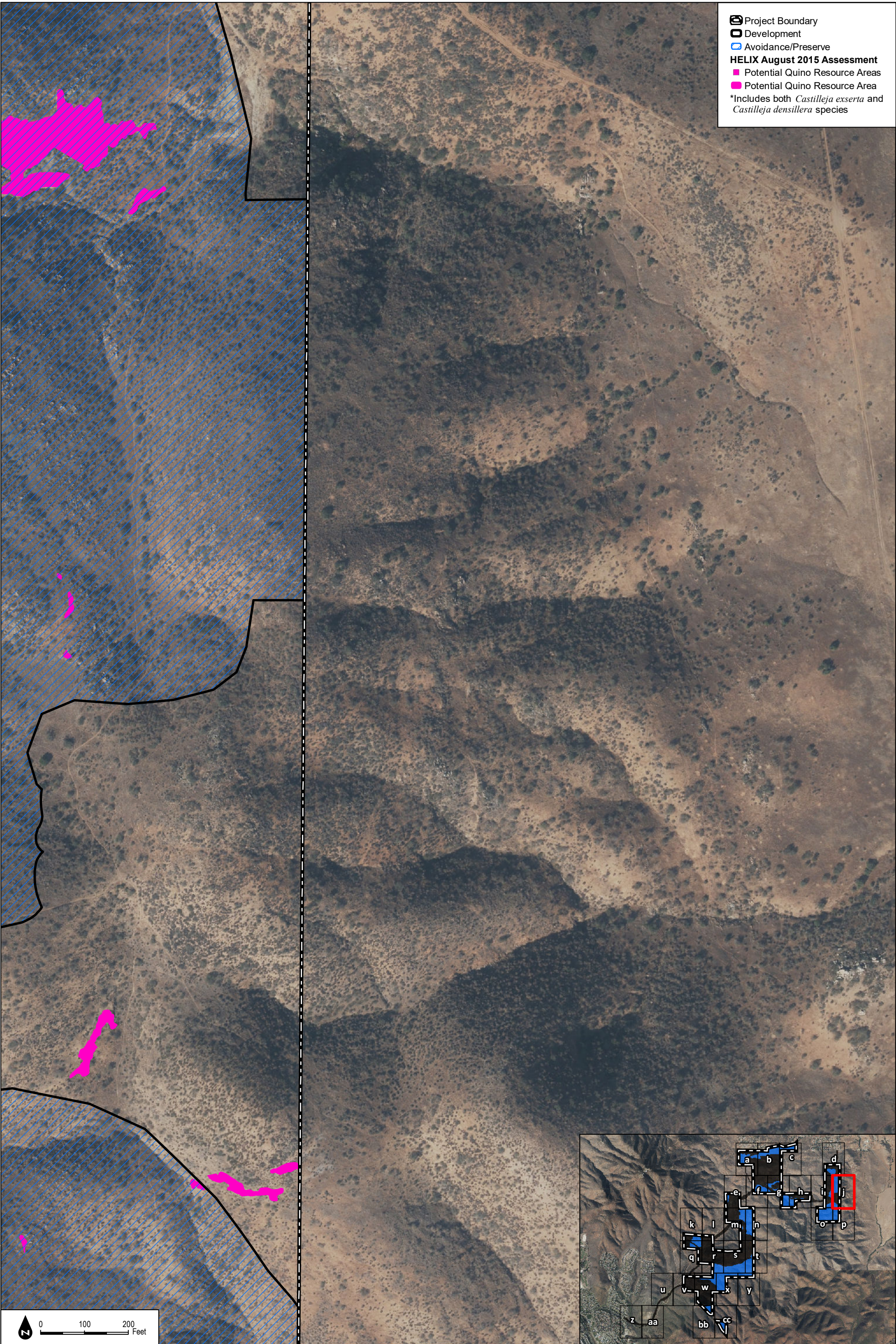
0 100 200 Feet

DUDEK

SOURCE: NAIP 2016, Hunsacker 2017, HELIX 2016

2015 Quino Host Plant Mapping, Potential Resource Areas, and Historical Locations

INTENTIONALLY LEFT BLANK



INTENTIONALLY LEFT BLANK



SOURCE: NAIP 2016, Hunsacker 2017, HELIX 2016

Figure 2.4-13k
2015 Quino Host Plant Mapping, Potential Resource Areas, and Historical Locations

INTENTIONALLY LEFT BLANK



SOURCE: NAIP 2016, Hunsacker 2017, HELIX 2016

Figure 2.4-131
2015 Quino Host Plant Mapping, Potential Resource Areas, and Historical Locations

INTENTIONALLY LEFT BLANK