

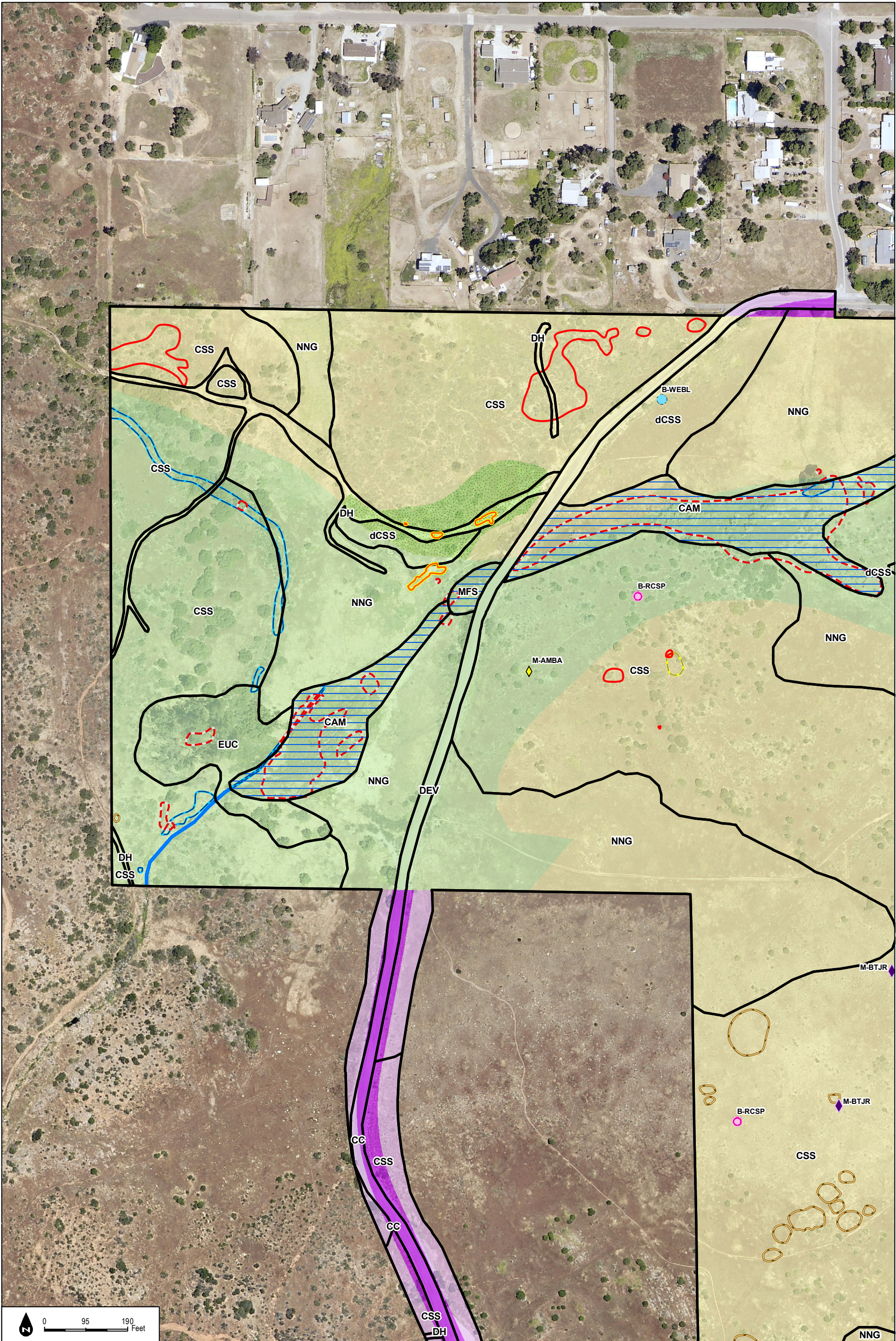
SOURCE: Hunsaker 2017

DUDEK

Otay Ranch Village 14 and Planning Areas 16/19

FIGURE 5-1
Impact to Biological Resources - Legend

INTENTIONALLY LEFT BLANK



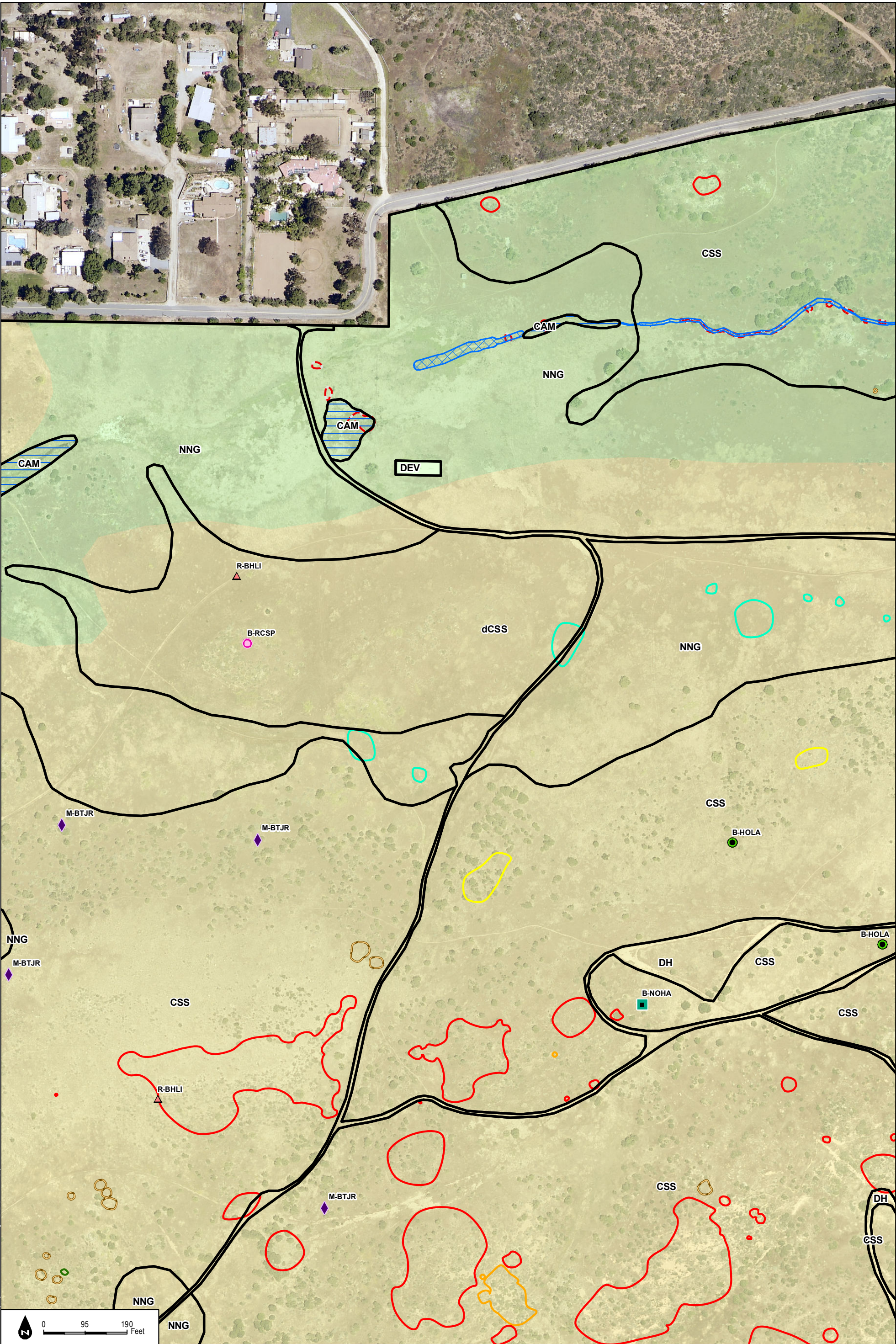
SOURCE: NAIP 2016; Hunsaker 2017

Otay Ranch Village 14 and Planning Areas 16/19

Figure 5-1a
Impacts to Biological Resources



INTENTIONALLY LEFT BLANK



SOURCE: NAIP 2016; Hunsaker 2017

DUDEK

Otay Ranch Village 14 and Planning Areas 16/19

Figure 5-1b
Impacts to Biological Resources

INTENTIONALLY LEFT BLANK



Figure 5-1c
Impacts to Biological Resources

INTENTIONALLY LEFT BLANK

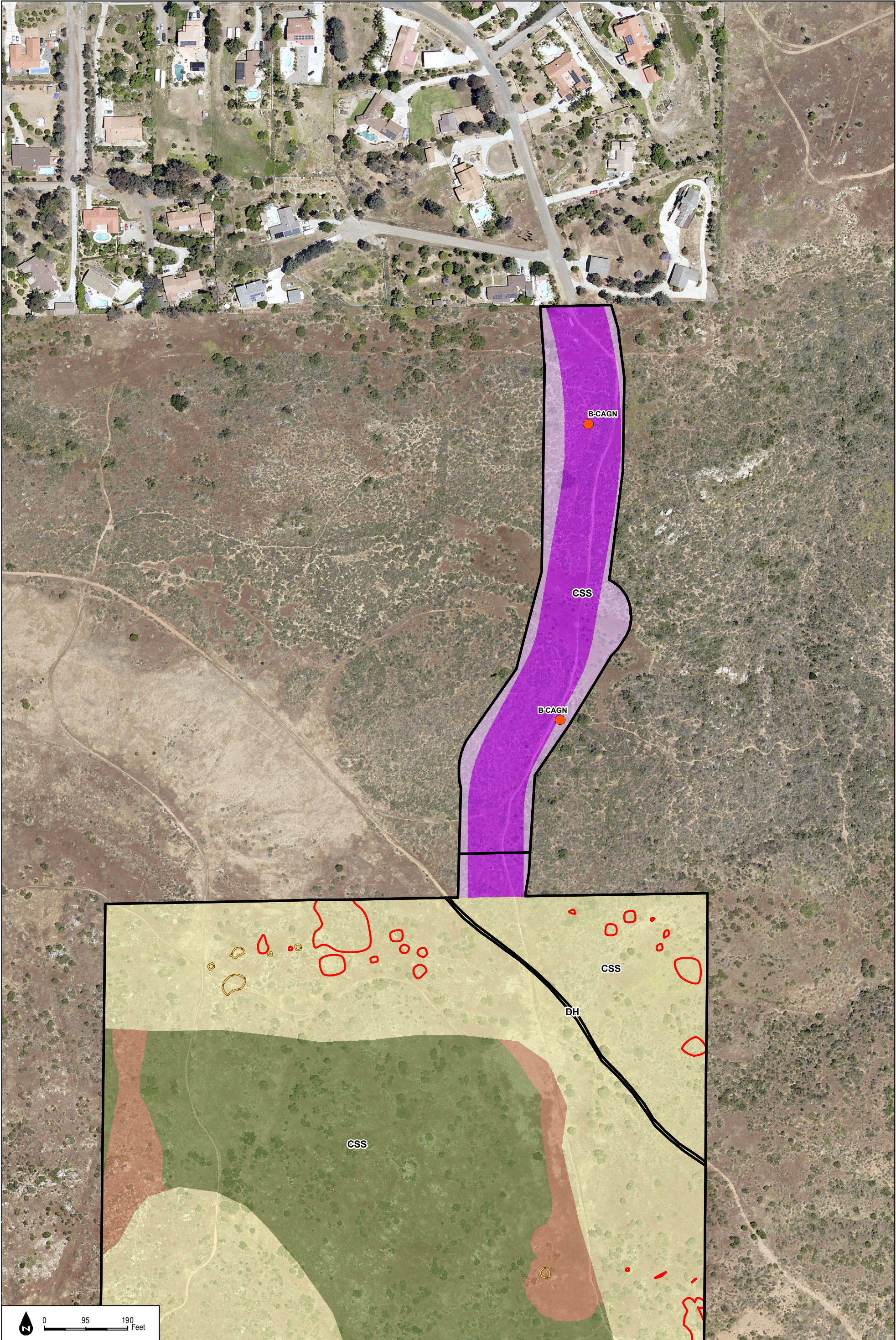
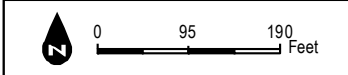
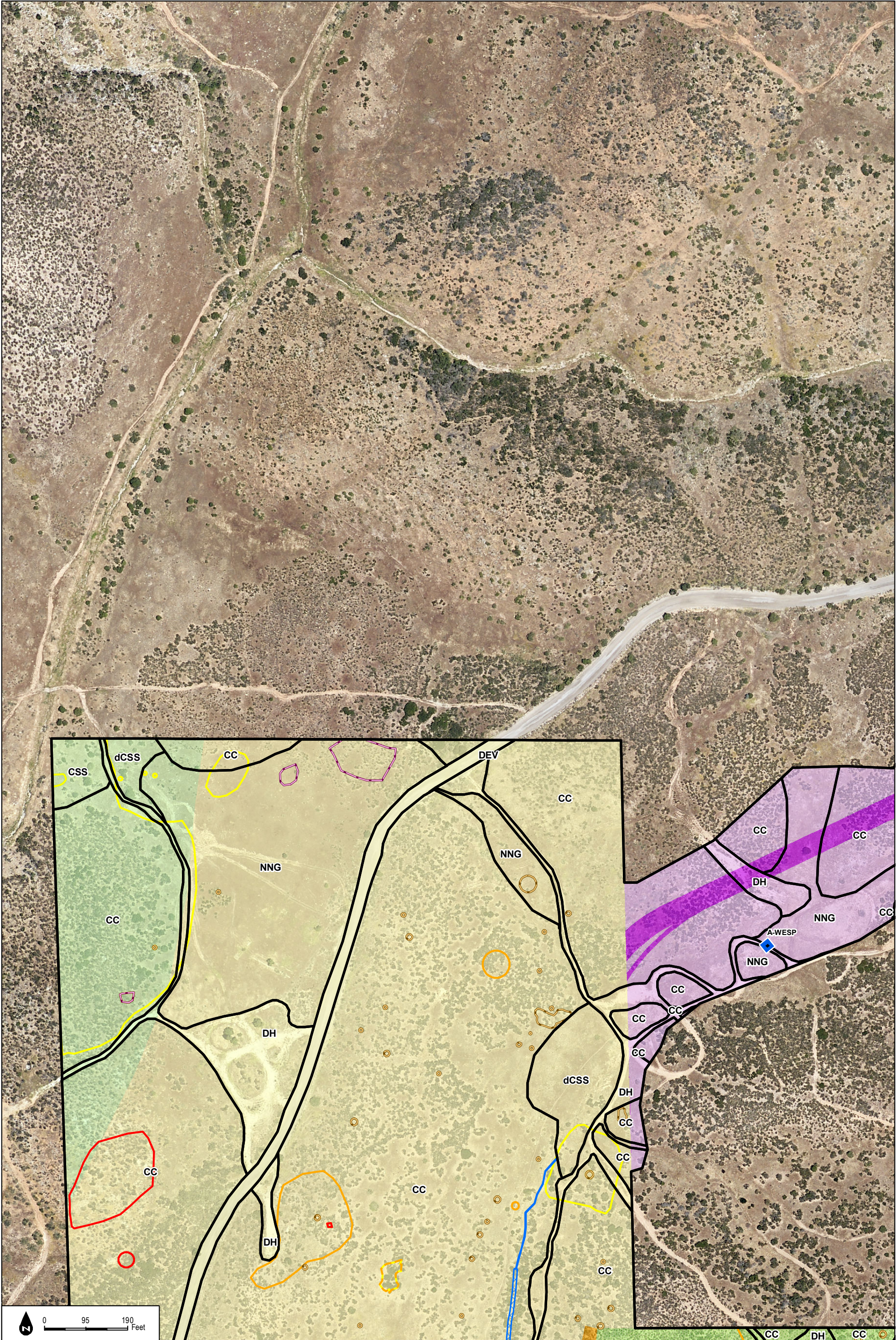


Figure 5-1d
Impacts to Biological Resources

INTENTIONALLY LEFT BLANK



INTENTIONALLY LEFT BLANK

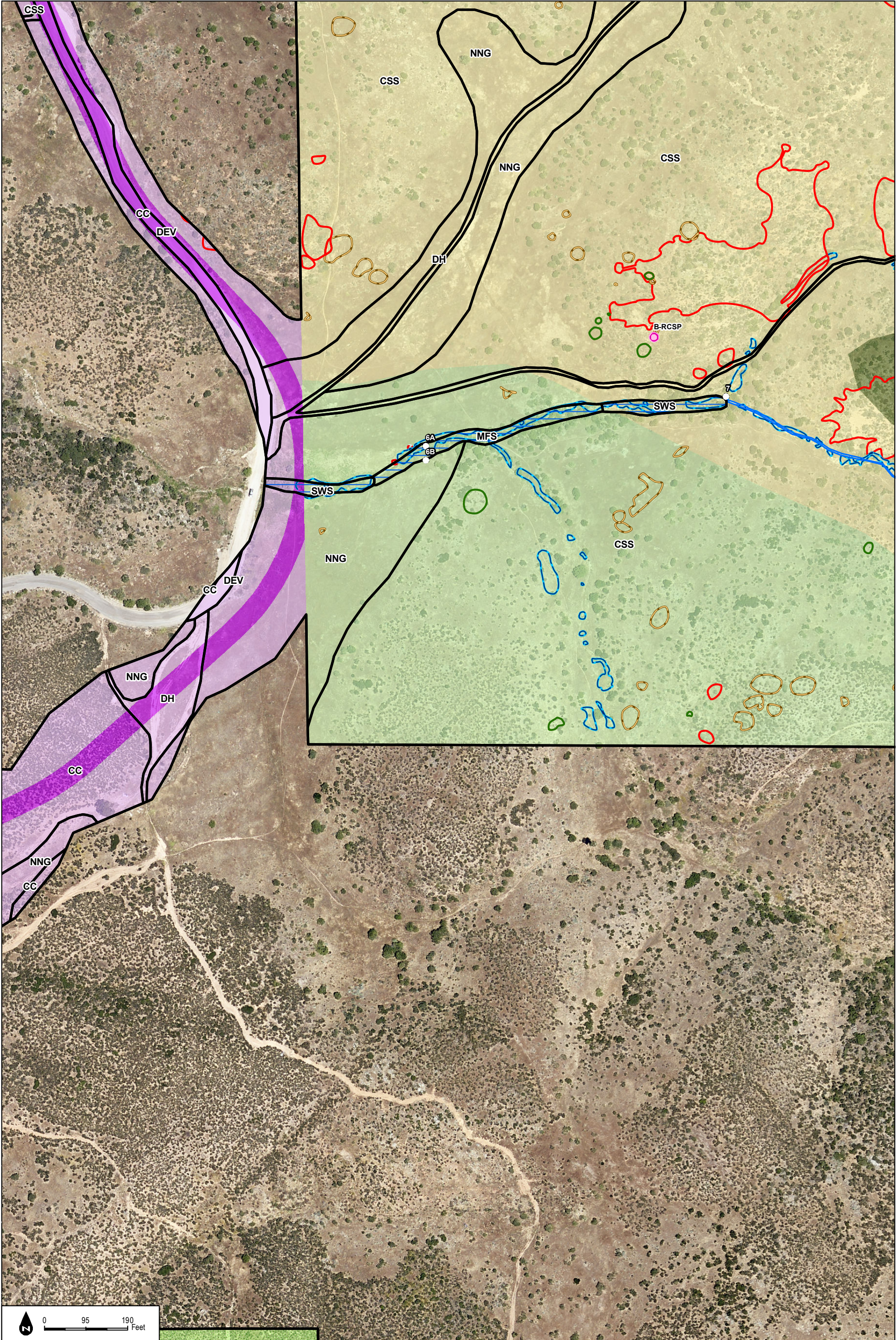


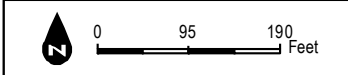
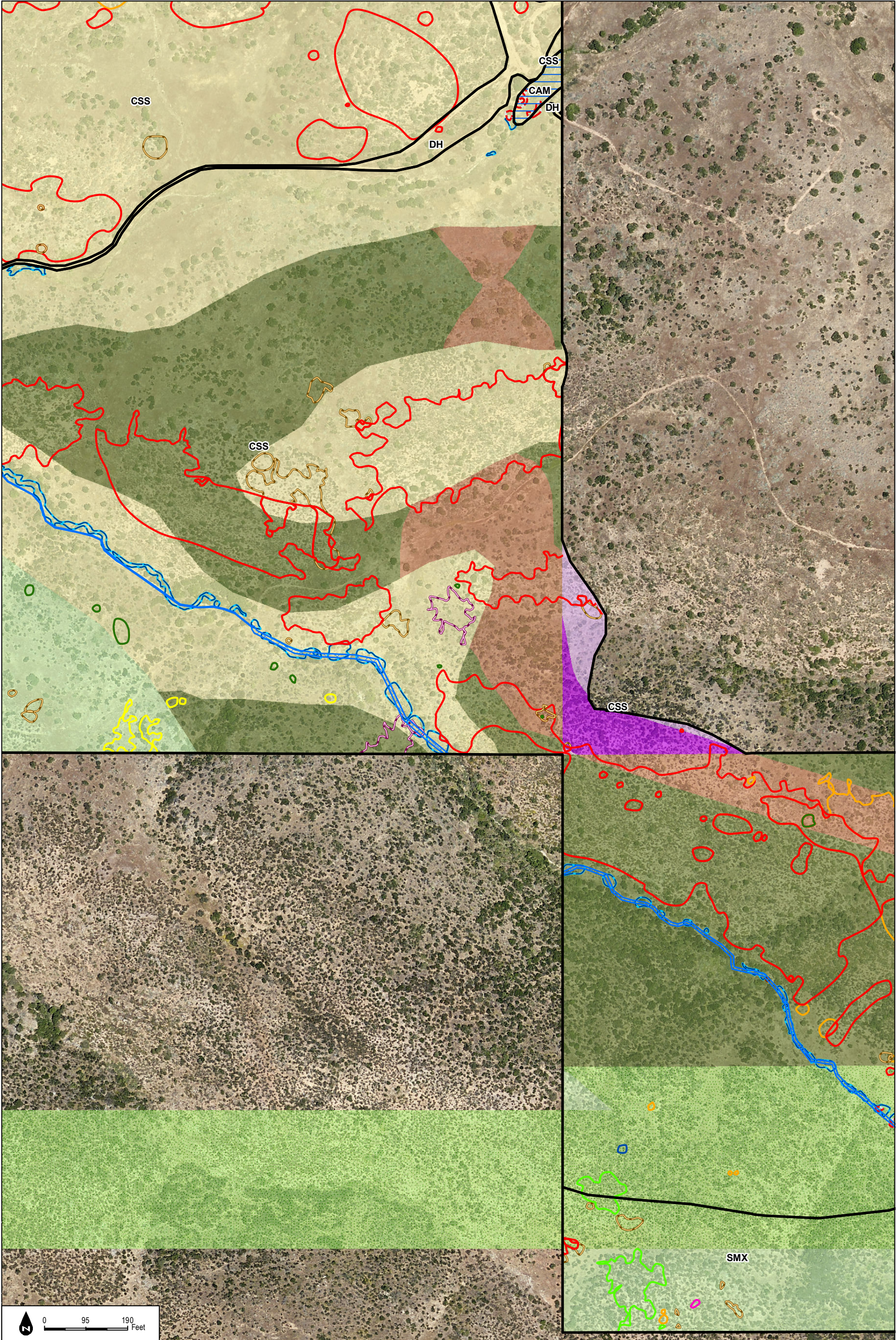
Figure 5-1f
Impacts to Biological Resources

SOURCE: NAIP 2016; Hunsaker 2017

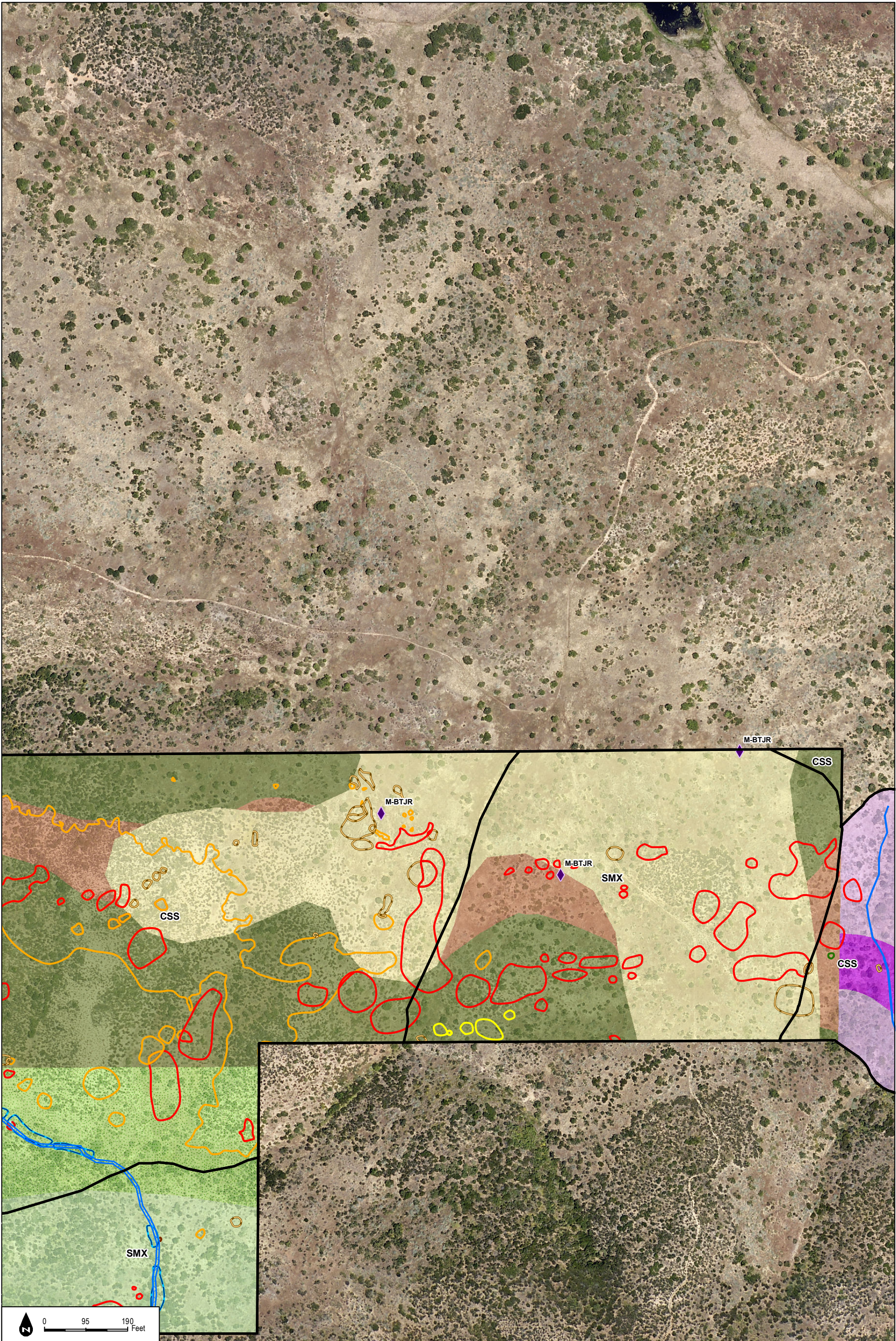
Otay Ranch Village 14 and Planning Areas 16/19



INTENTIONALLY LEFT BLANK



INTENTIONALLY LEFT BLANK



SOURCE: NAIP 2016; Hunsaker 2017



Otay Ranch Village 14 and Planning Areas 16/19

Figure 5-1h
Impacts to Biological Resources

INTENTIONALLY LEFT BLANK