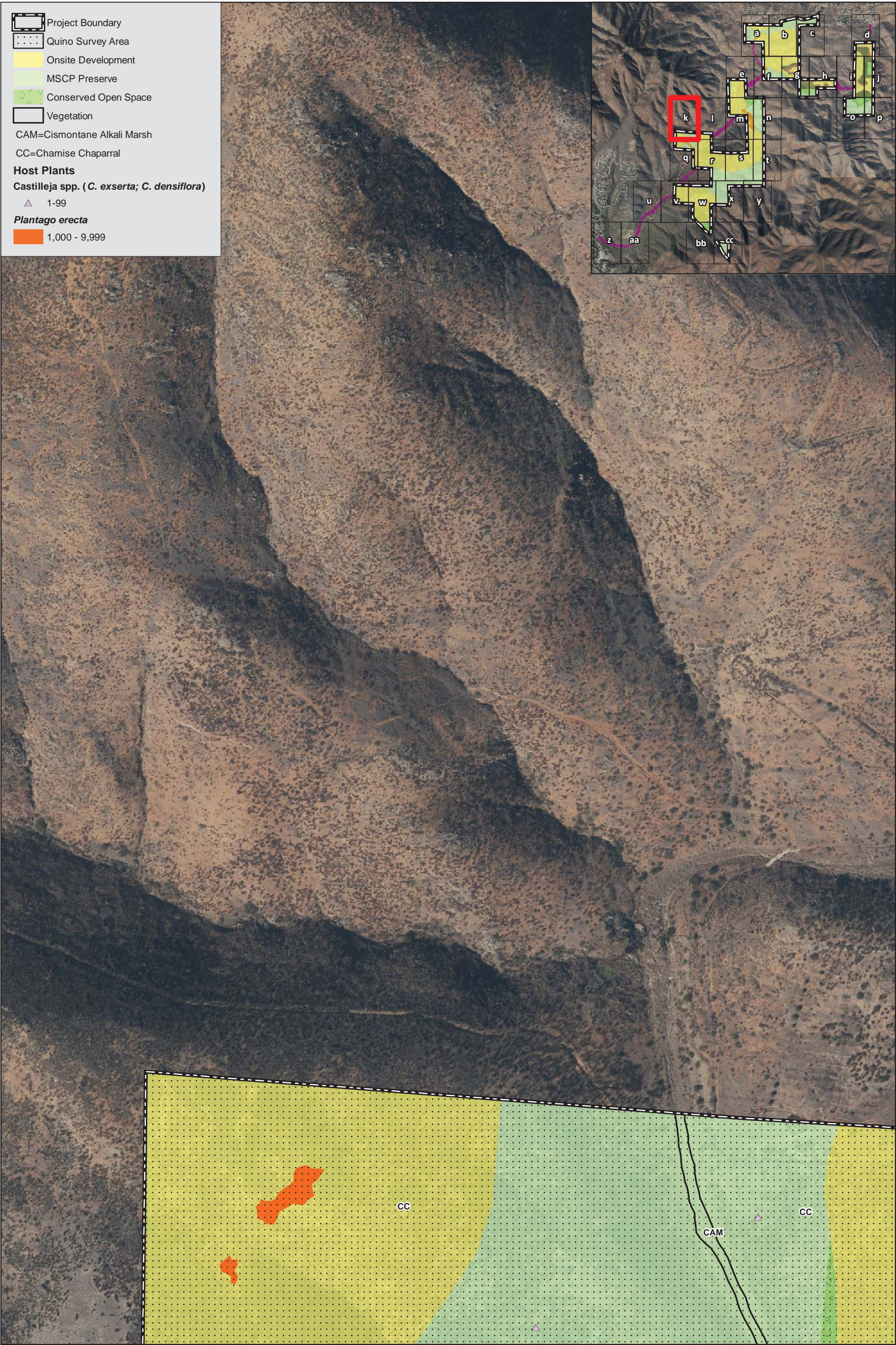


2016 Quino Host Plant Mapping and Historical Locations

OTAY RANCH VILLAGE 14 AND PLANNING AREAS 16/19
DEVELOPMENT FOOTPRINT AND PRESERVE



2016 Quino Host Plant Mapping and Historical Locations

OTAY RANCH VILLAGE 14 AND PLANNING AREAS 16/19
DEVELOPMENT FOOTPRINT AND PRESERVE

Project Boundary

Quino Survey Area

Onsite Development

Offsite Development

Vegetation

CC=Chamise Chaparral

DEV=Developed

DH=Disturbed Habitat

USFWS Quino Data

Host Plants

Castilleja spp. (*C. exserta*; *C. densiflora*)

1-99

Plantago erecta

1-99

Plantago erecta

100-999

1,000 - 9,999

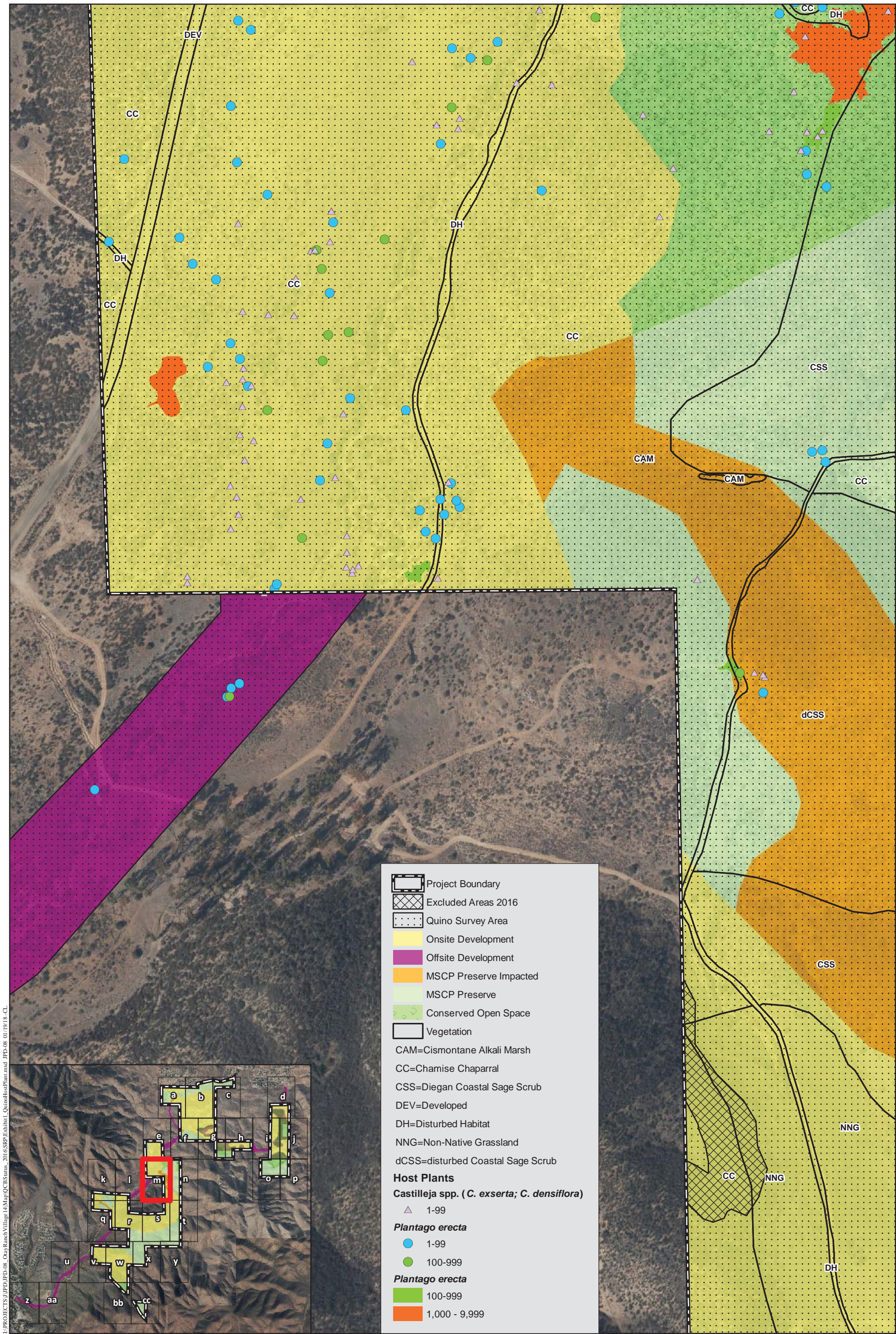
2016 Quino Host Plant Mapping and Historical Locations

OTAY RANCH VILLAGE 14 AND PLANNING AREAS 16/19
DEVELOPMENT FOOTPRINT AND PRESERVE

HELIX
Environmental Planning

0 200
Feet

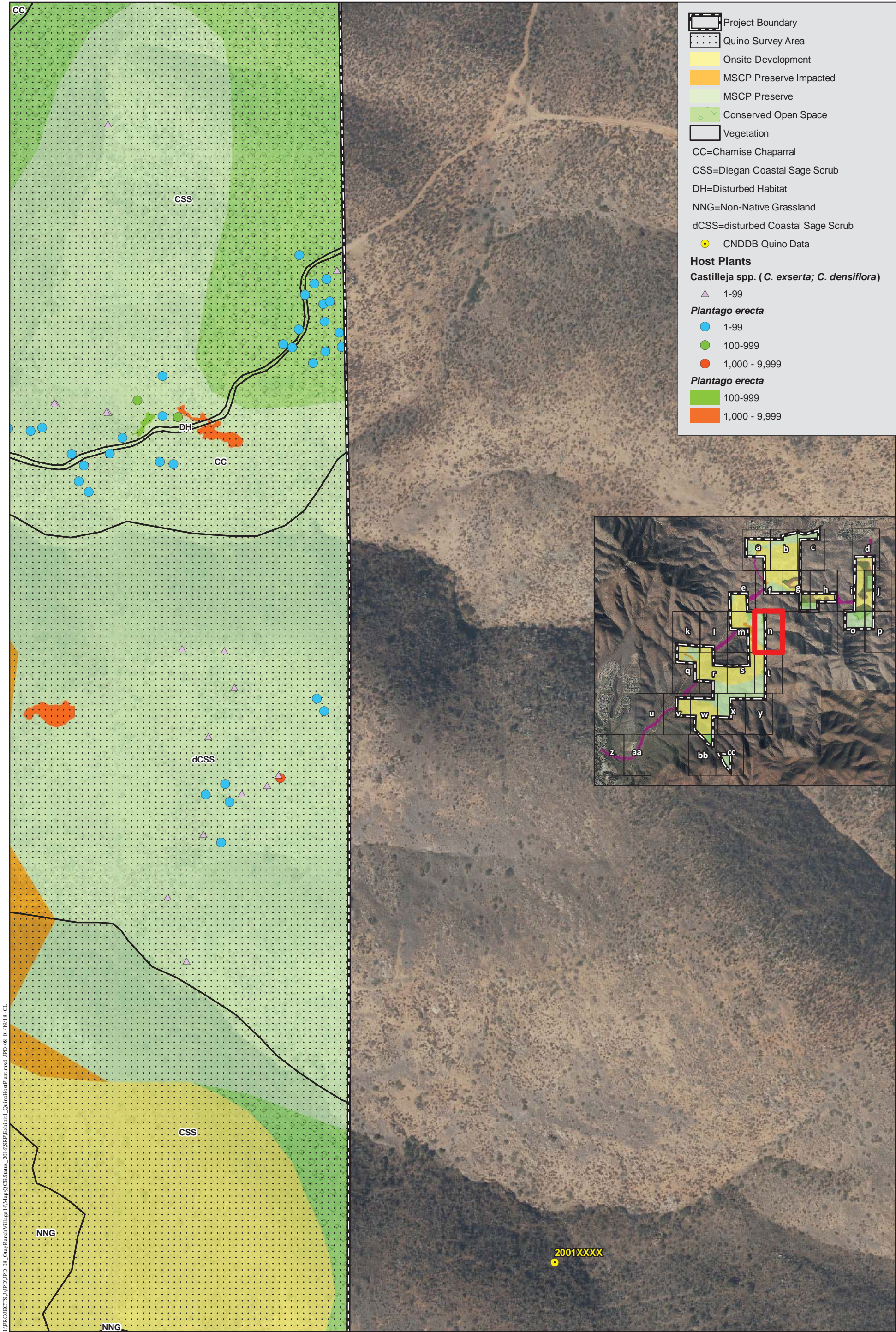
Exhibit 11



2016 Quino Host Plant Mapping and Historical Locations

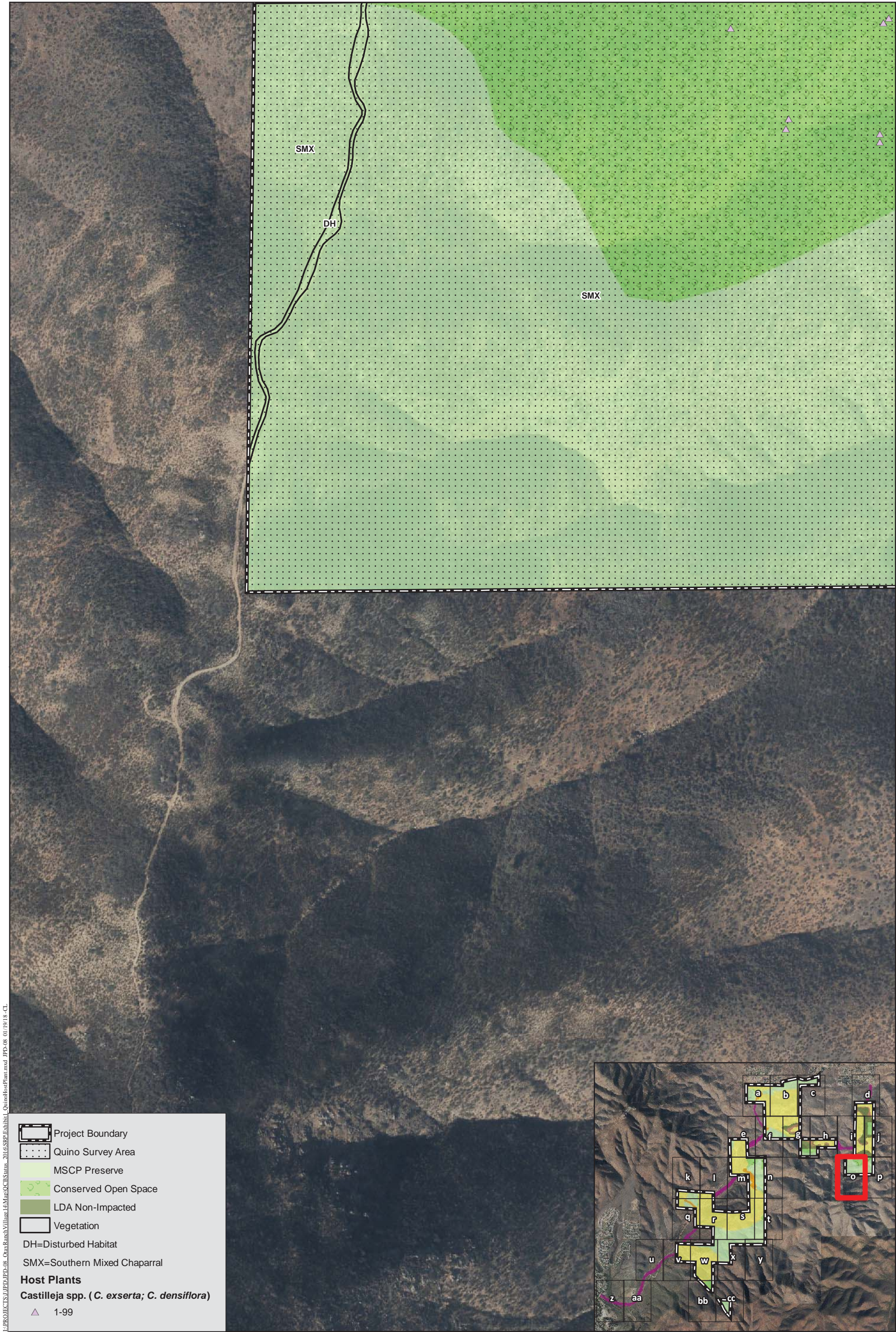
OTAY RANCH VILLAGE 14 AND PLANNING AREAS 16/19
DEVELOPMENT FOOTPRINT AND PRESERVE

Exhibit 1m



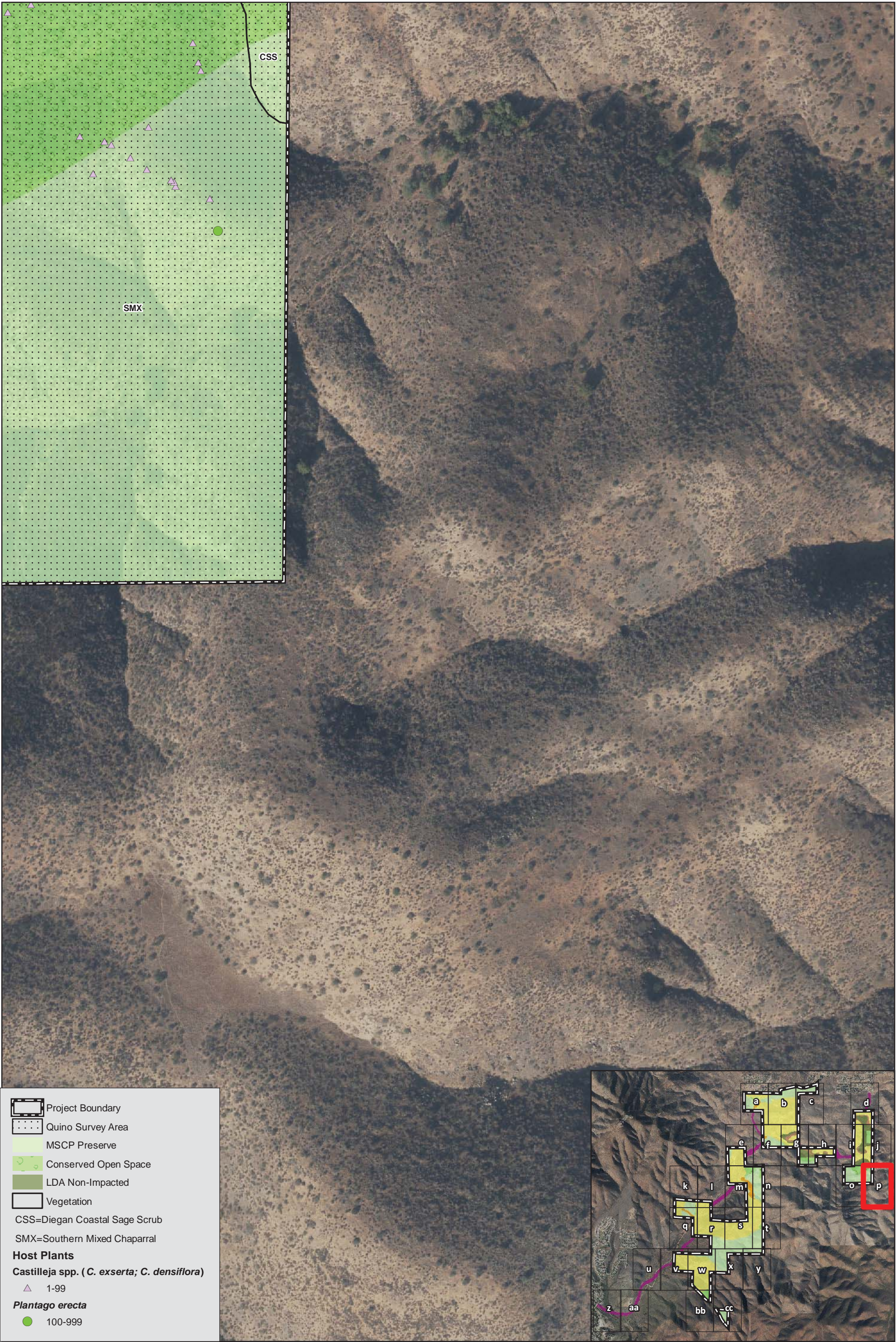
2016 Quino Host Plant Mapping and Historical Locations

OTAY RANCH VILLAGE 14 AND PLANNING AREAS 16/19
DEVELOPMENT FOOTPRINT AND PRESERVE



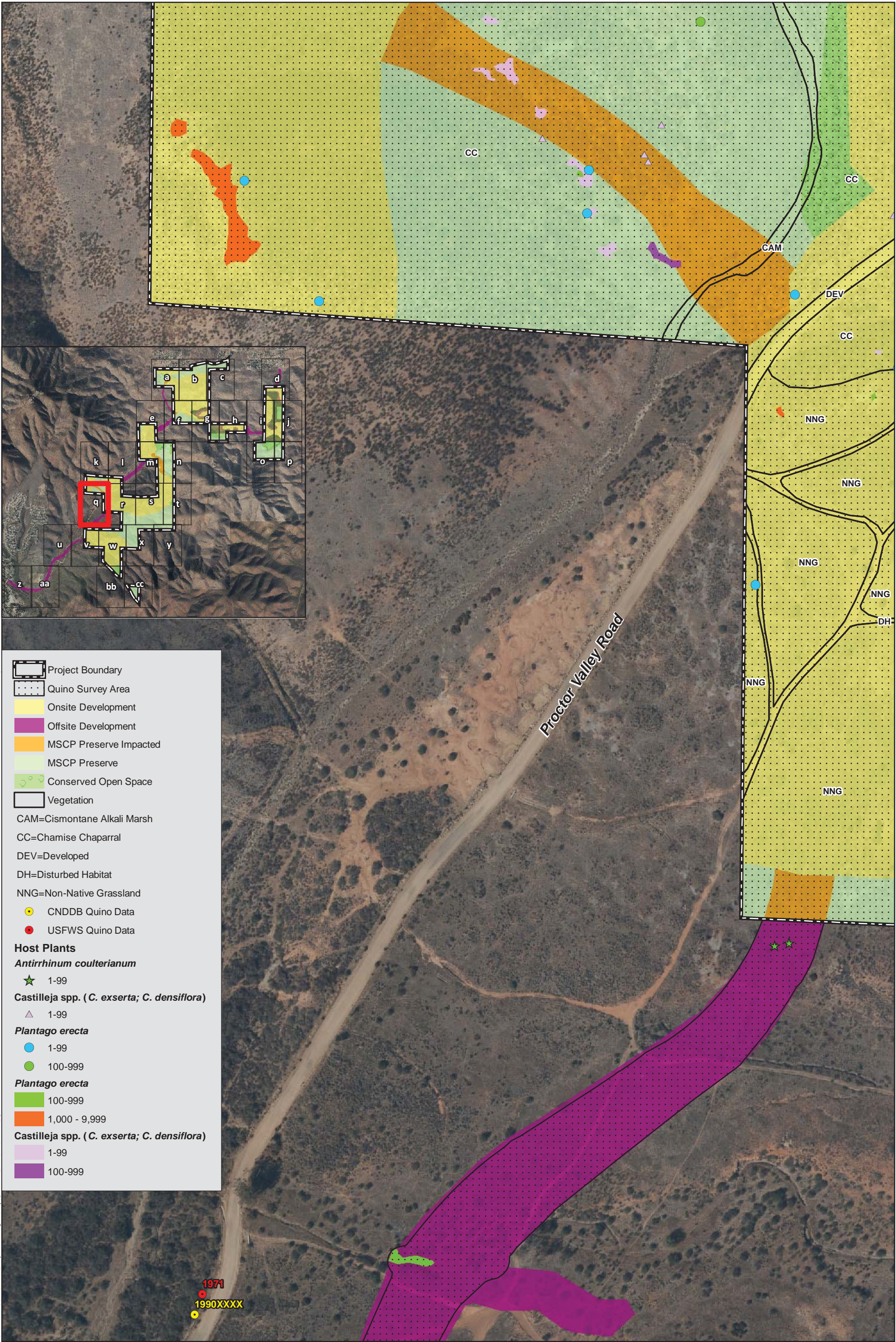
2016 Quino Host Plant Mapping and Historical Locations

OTAY RANCH VILLAGE 14 AND PLANNING AREAS 16/19
DEVELOPMENT FOOTPRINT AND PRESERVE



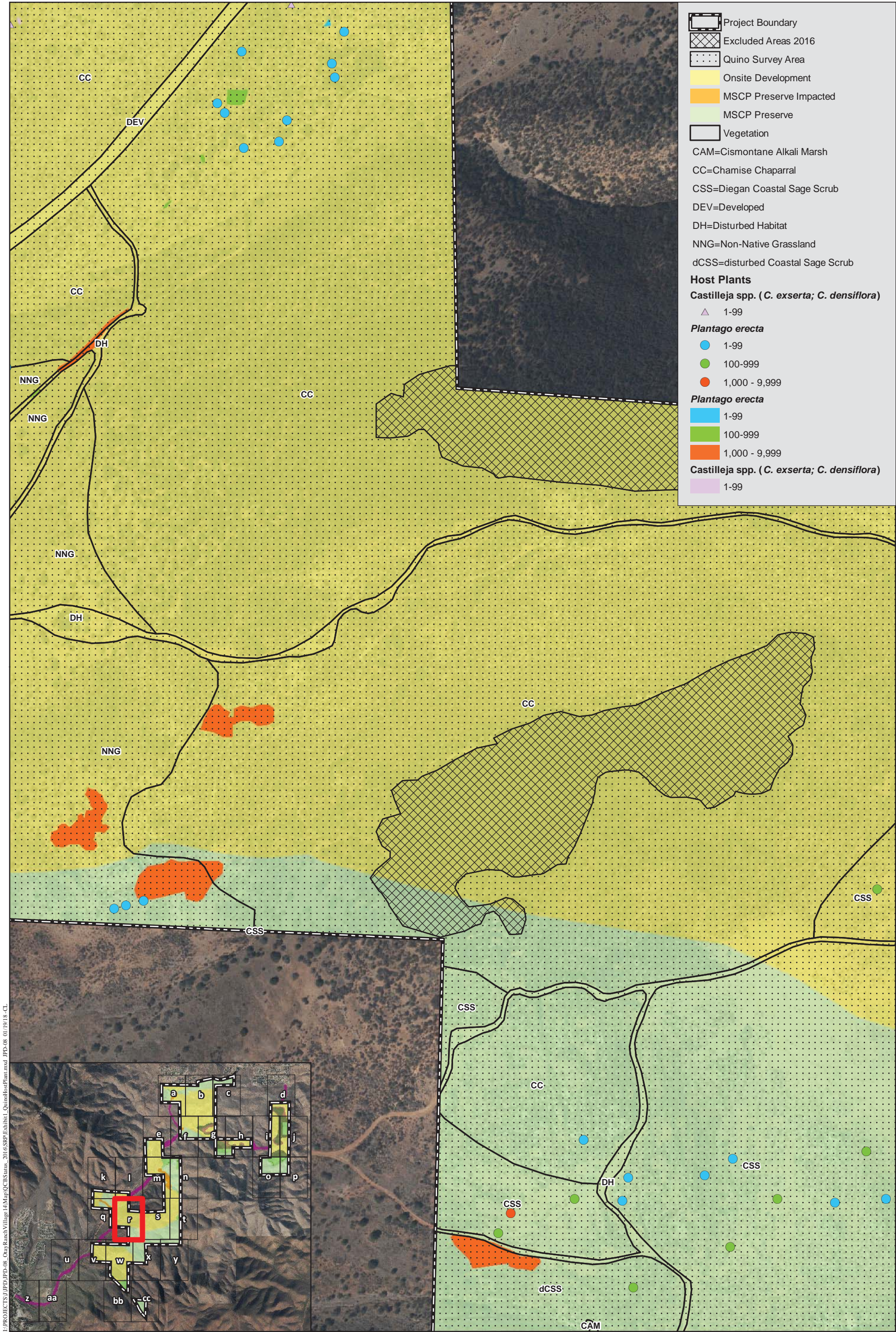
2016 Quino Host Plant Mapping and Historical Locations

OTAY RANCH VILLAGE 14 AND PLANNING AREAS 16/19
DEVELOPMENT FOOTPRINT AND PRESERVE



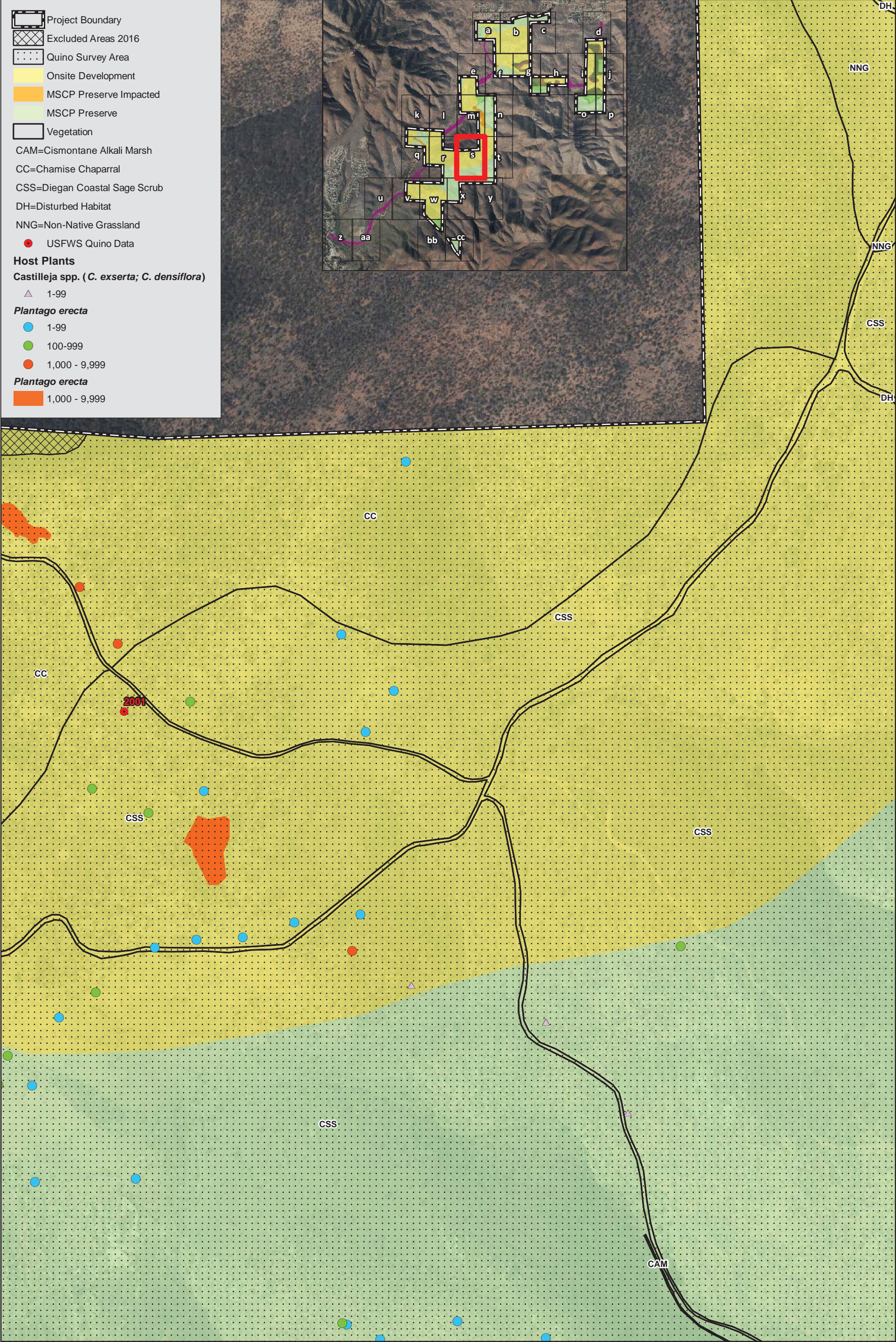
2016 Quino Host Plant Mapping and Historical Locations

OTAY RANCH VILLAGE 14 AND PLANNING AREAS 16/19
DEVELOPMENT FOOTPRINT AND PRESERVE



2016 Quino Host Plant Mapping and Historical Locations

OTAY RANCH VILLAGE 14 AND PLANNING AREAS 16/19
DEVELOPMENT FOOTPRINT AND PRESERVE



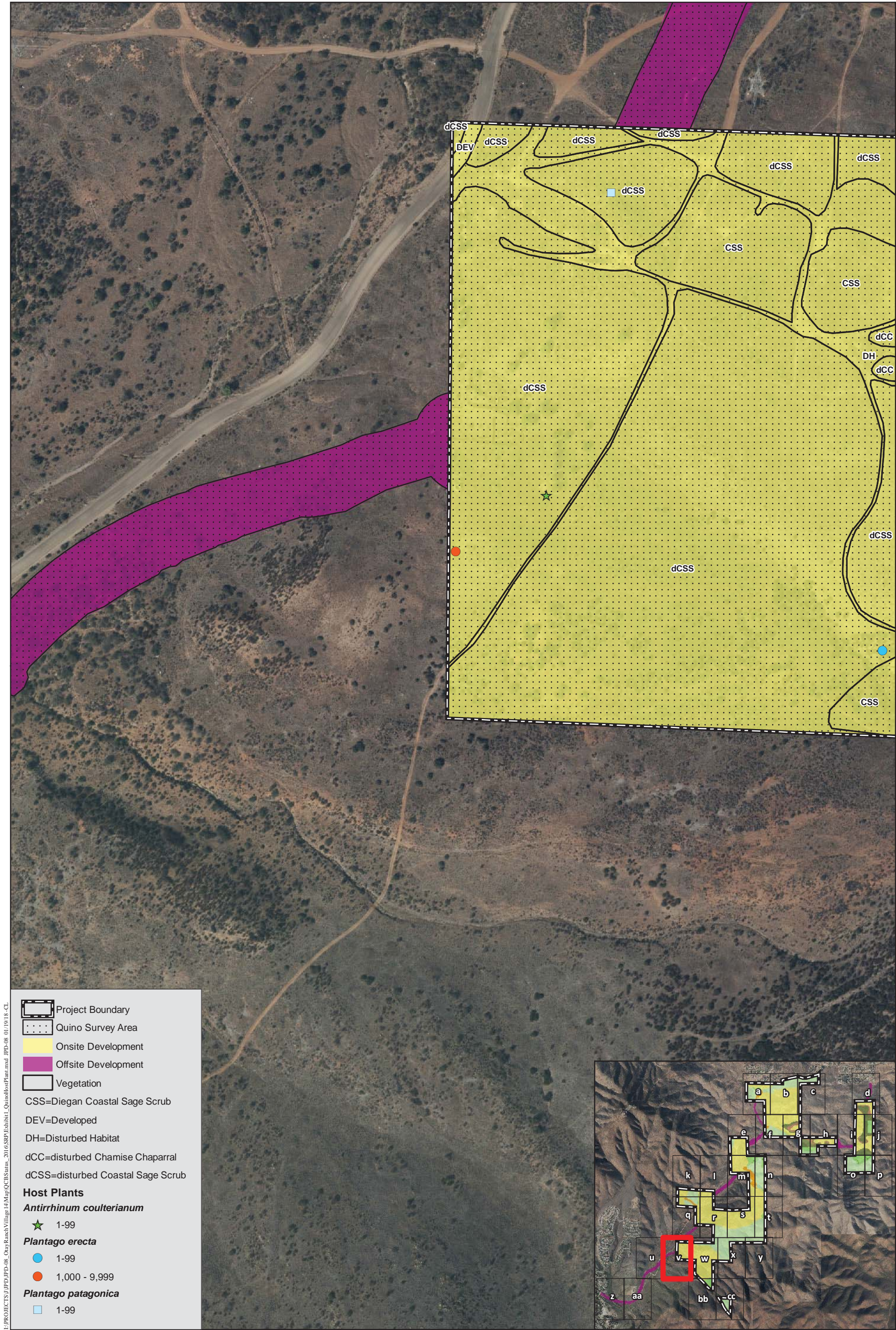
2016 Quino Host Plant Mapping and Historical Locations

OTAY RANCH VILLAGE 14 AND PLANNING AREAS 16/19
DEVELOPMENT FOOTPRINT AND PRESERVE



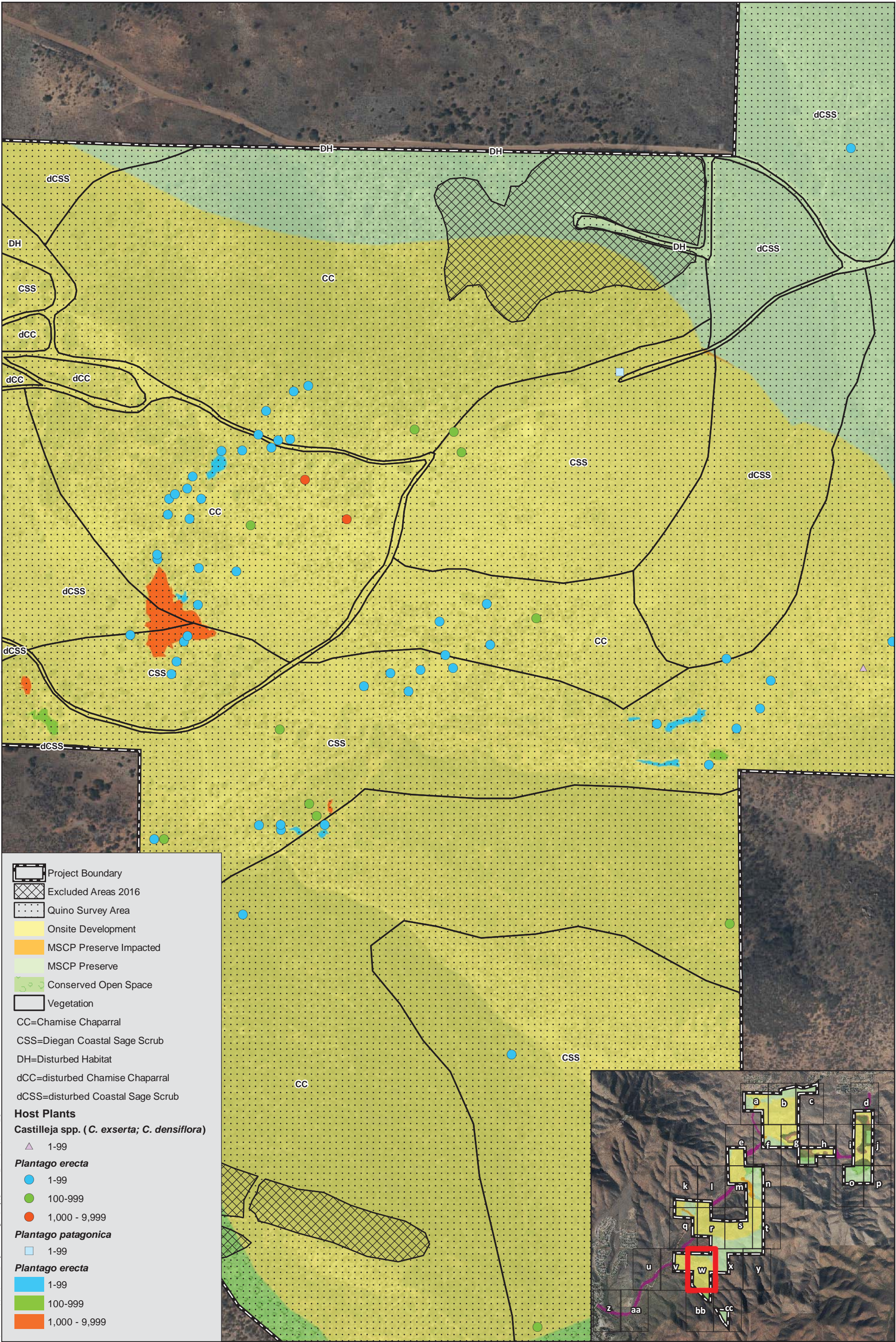
2016 Quino Host Plant Mapping and Historical Locations

OTAY RANCH VILLAGE 14 AND PLANNING AREAS 16/19
DEVELOPMENT FOOTPRINT AND PRESERVE



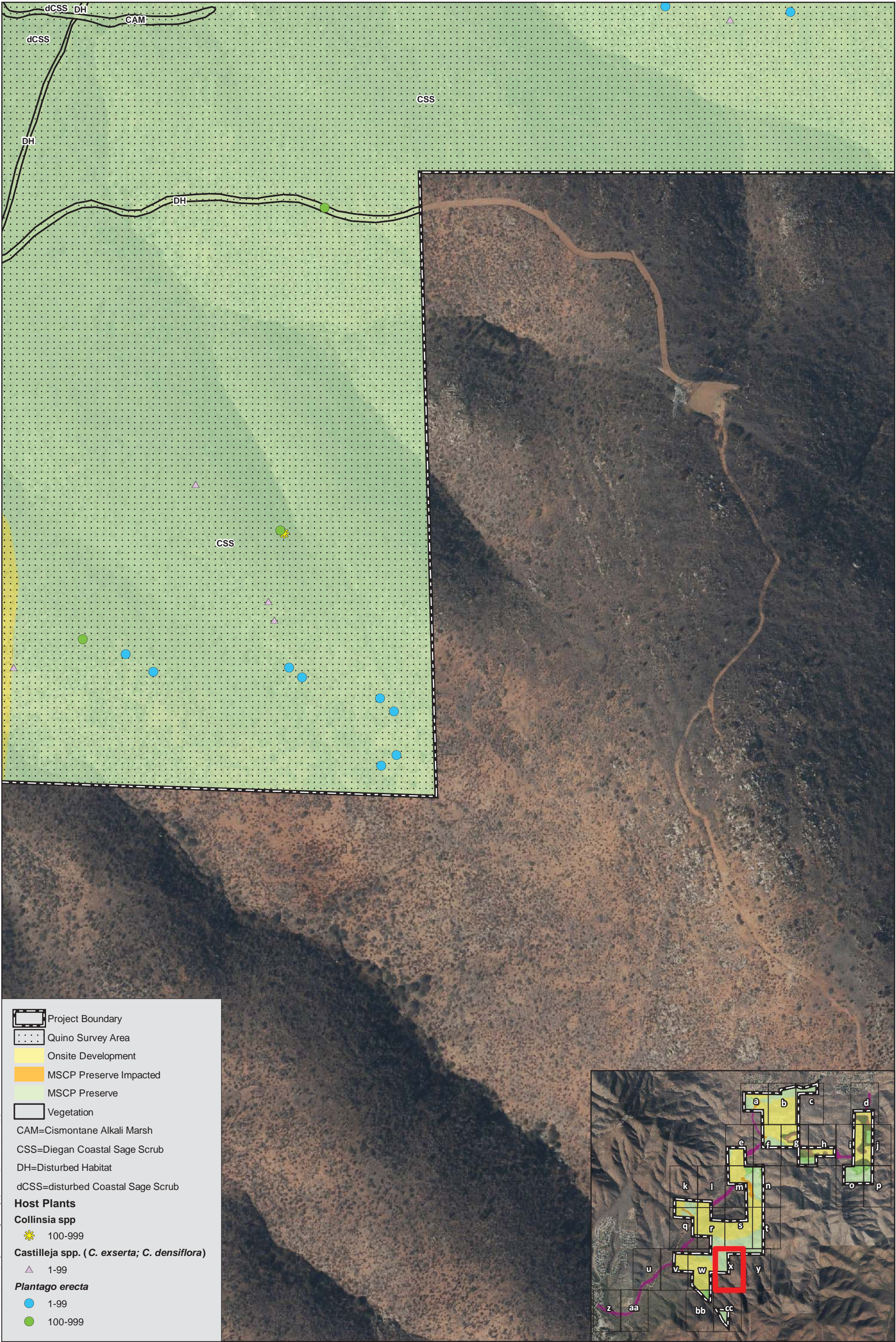
2016 Quino Host Plant Mapping and Historical Locations

OTAY RANCH VILLAGE 14 AND PLANNING AREAS 16/19
DEVELOPMENT FOOTPRINT AND PRESERVE



2016 Quino Host Plant Mapping and Historical Locations

OTAY RANCH VILLAGE 14 AND PLANNING AREAS 16/19
DEVELOPMENT FOOTPRINT AND PRESERVE



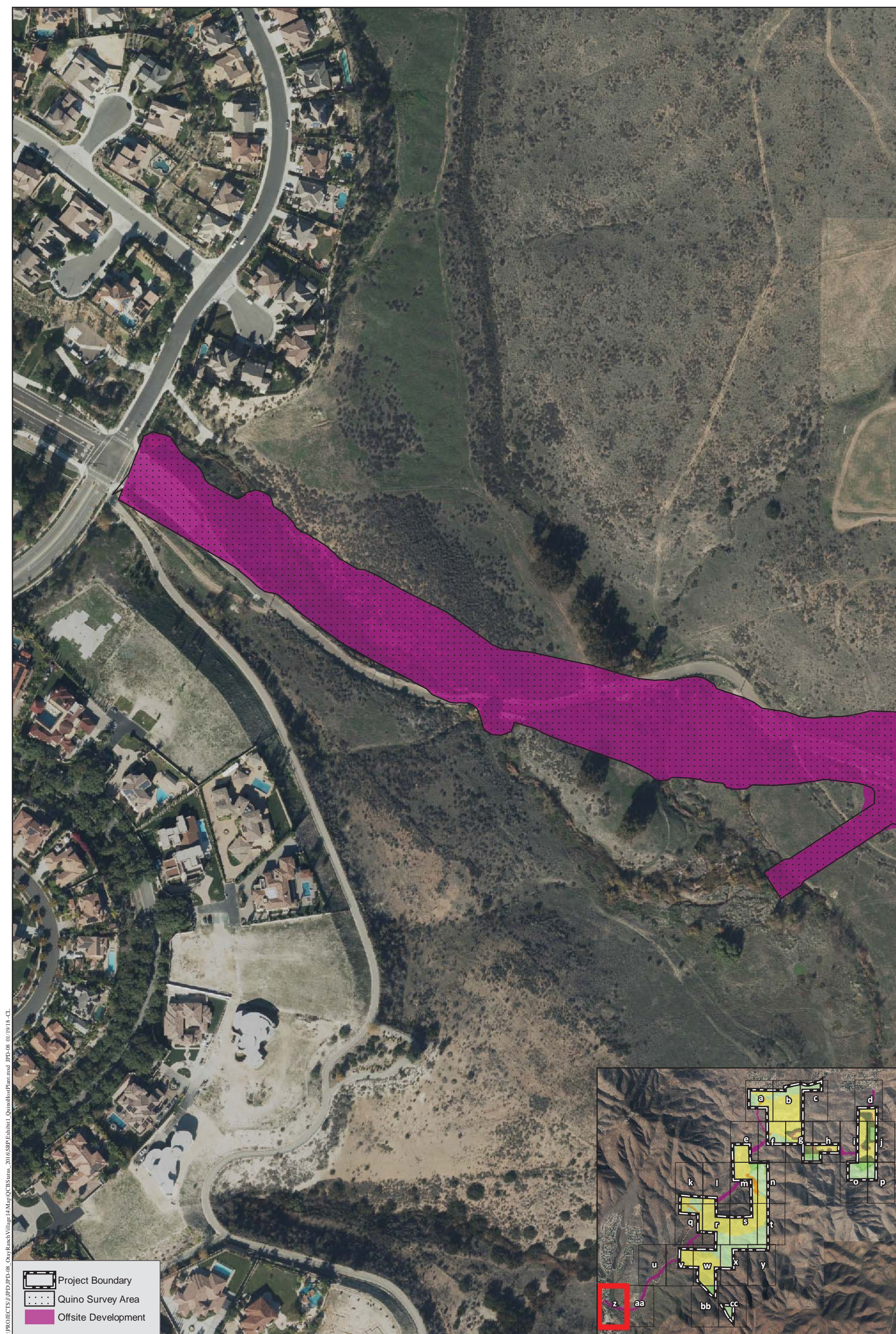
2016 Quino Host Plant Mapping and Historical Locations

OTAY RANCH VILLAGE 14 AND PLANNING AREAS 16/19
DEVELOPMENT FOOTPRINT AND PRESERVE



2016 Quino Host Plant Mapping and Historical Locations

OTAY RANCH VILLAGE 14 AND PLANNING AREAS 16/19
DEVELOPMENT FOOTPRINT AND PRESERVE



2016 Quino Host Plant Mapping and Historical Locations



2016 Quino Host Plant Mapping and Historical Locations

OTAY RANCH VILLAGE 14 AND PLANNING AREAS 16/19
DEVELOPMENT FOOTPRINT AND PRESERVE



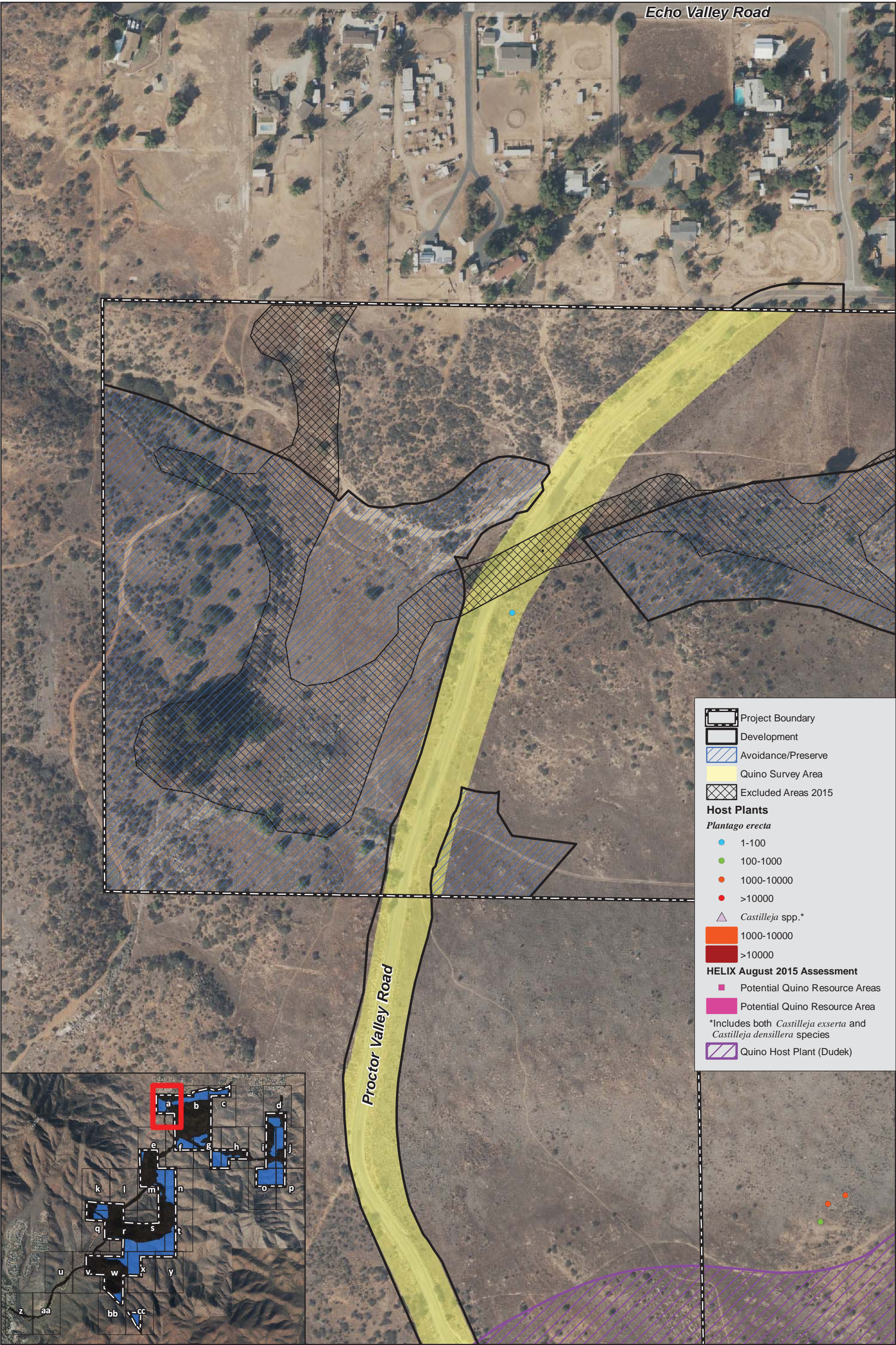
2016 Quino Host Plant Mapping and Historical Locations

OTAY RANCH VILLAGE 14 AND PLANNING AREAS 16/19
DEVELOPMENT FOOTPRINT AND PRESERVE



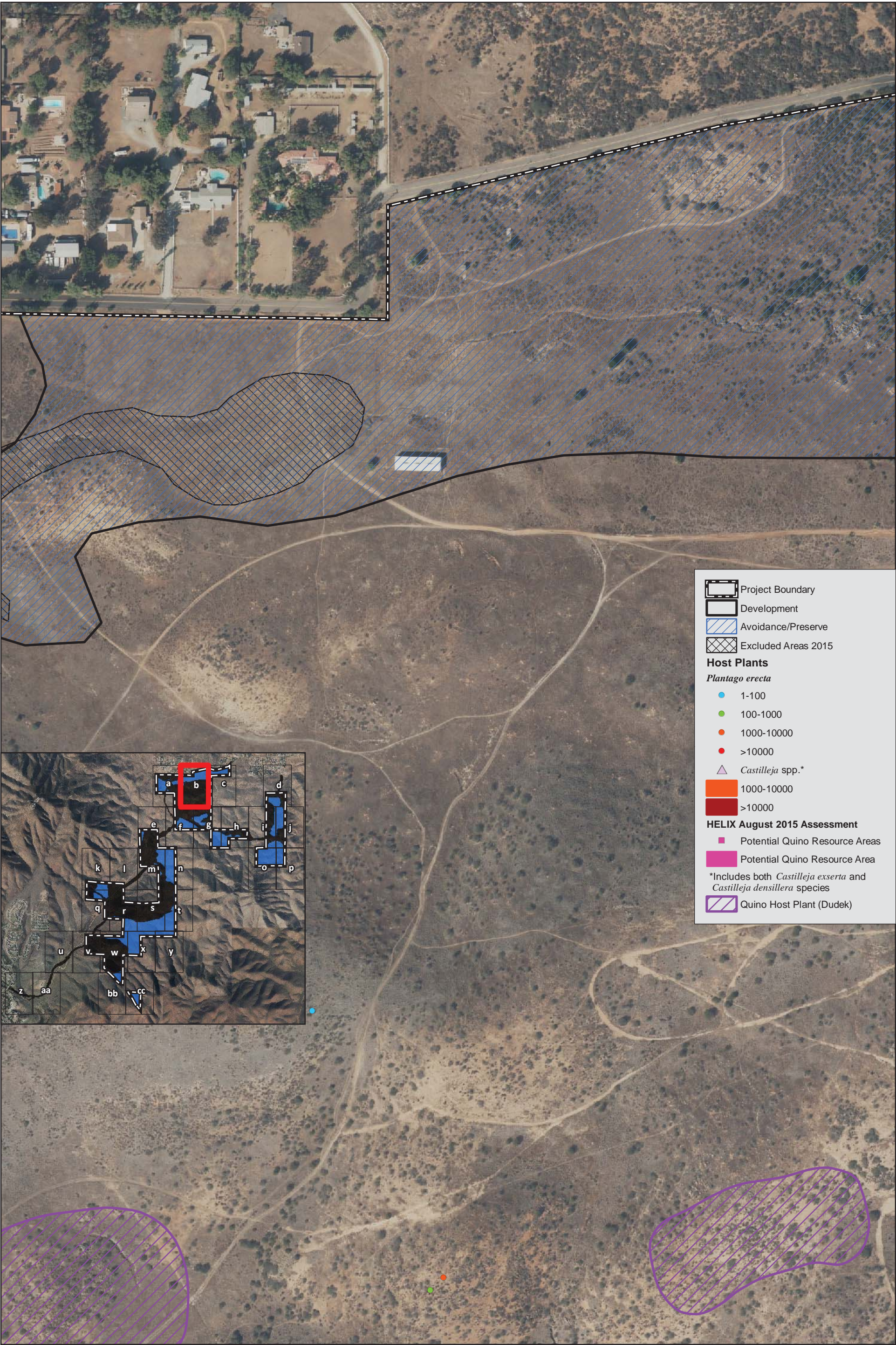
2016 Quino Host Plant Mapping and Historical Locations

OTAY RANCH VILLAGE 14 AND PLANNING AREAS 16/19
DEVELOPMENT FOOTPRINT AND PRESERVE



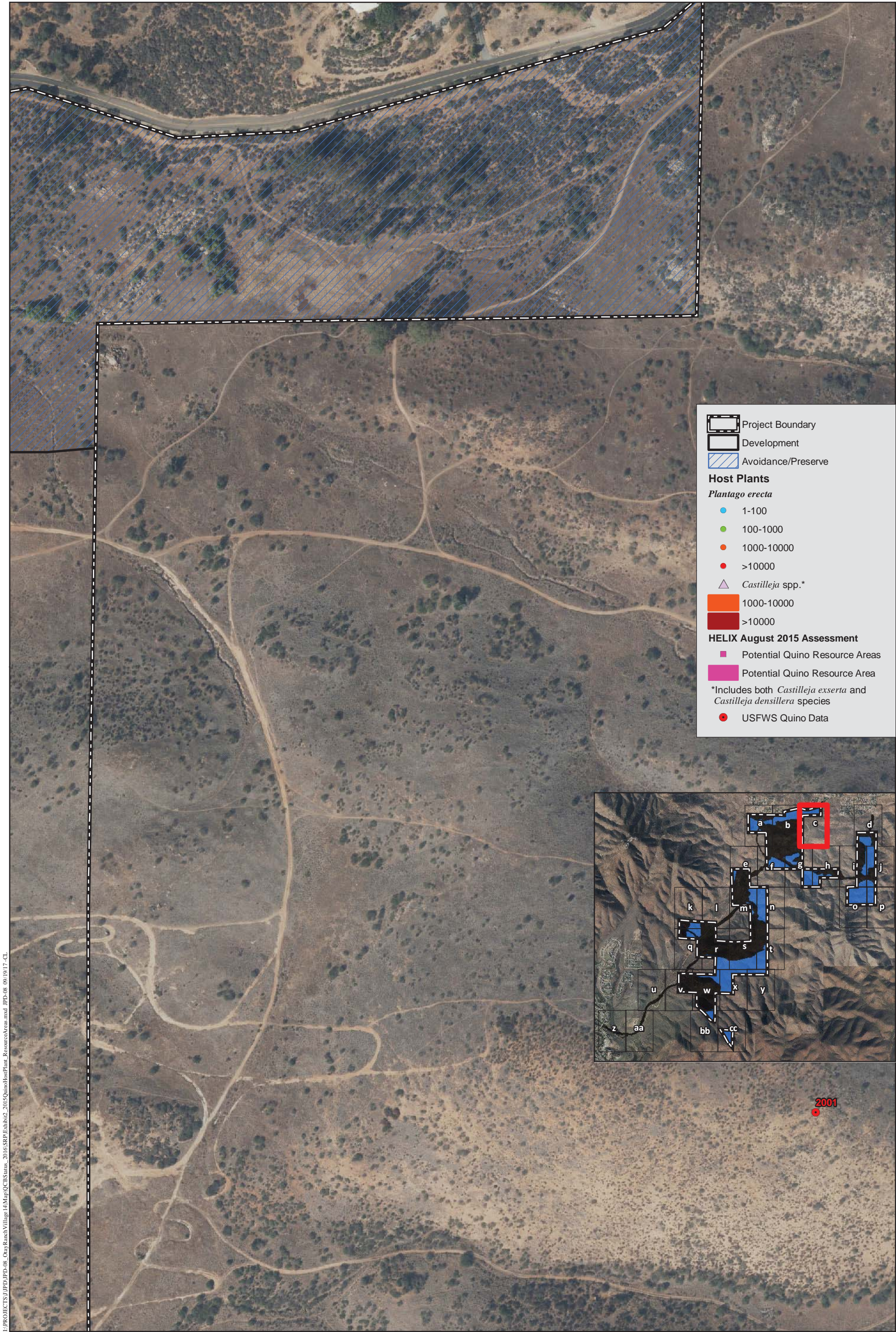
2015 Quino Host Plant Mapping, Potential Resource Areas, and Historical Locations

OTAY RANCH VILLAGE 14 AND PLANNING AREAS 16/19
DEVELOPMENT FOOTPRINT AND PRESERVE



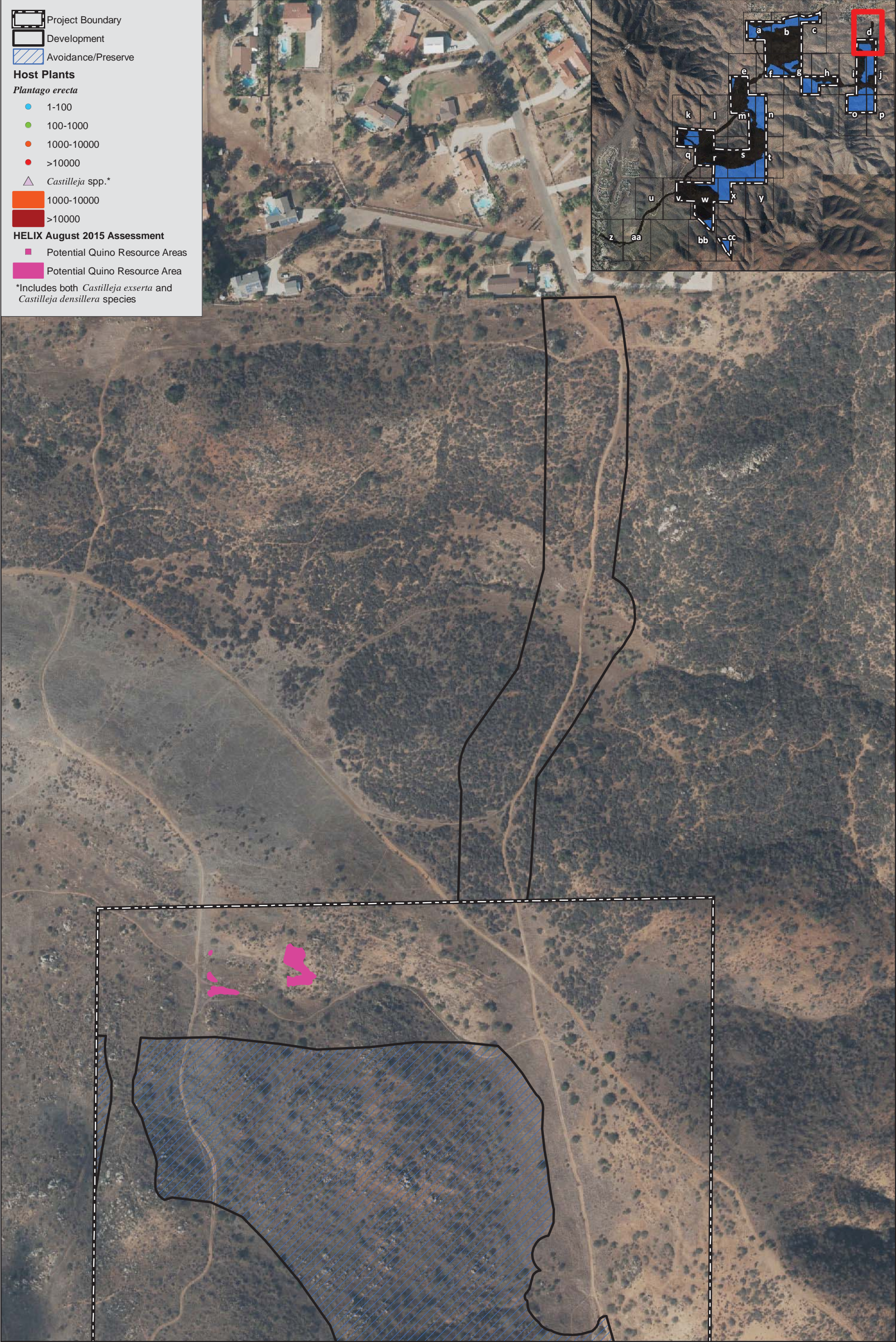
2015 Quino Host Plant Mapping, Potential Resource Areas, and Historical Locations

OTAY RANCH VILLAGE 14 AND PLANNING AREAS 16/19
DEVELOPMENT FOOTPRINT AND PRESERVE



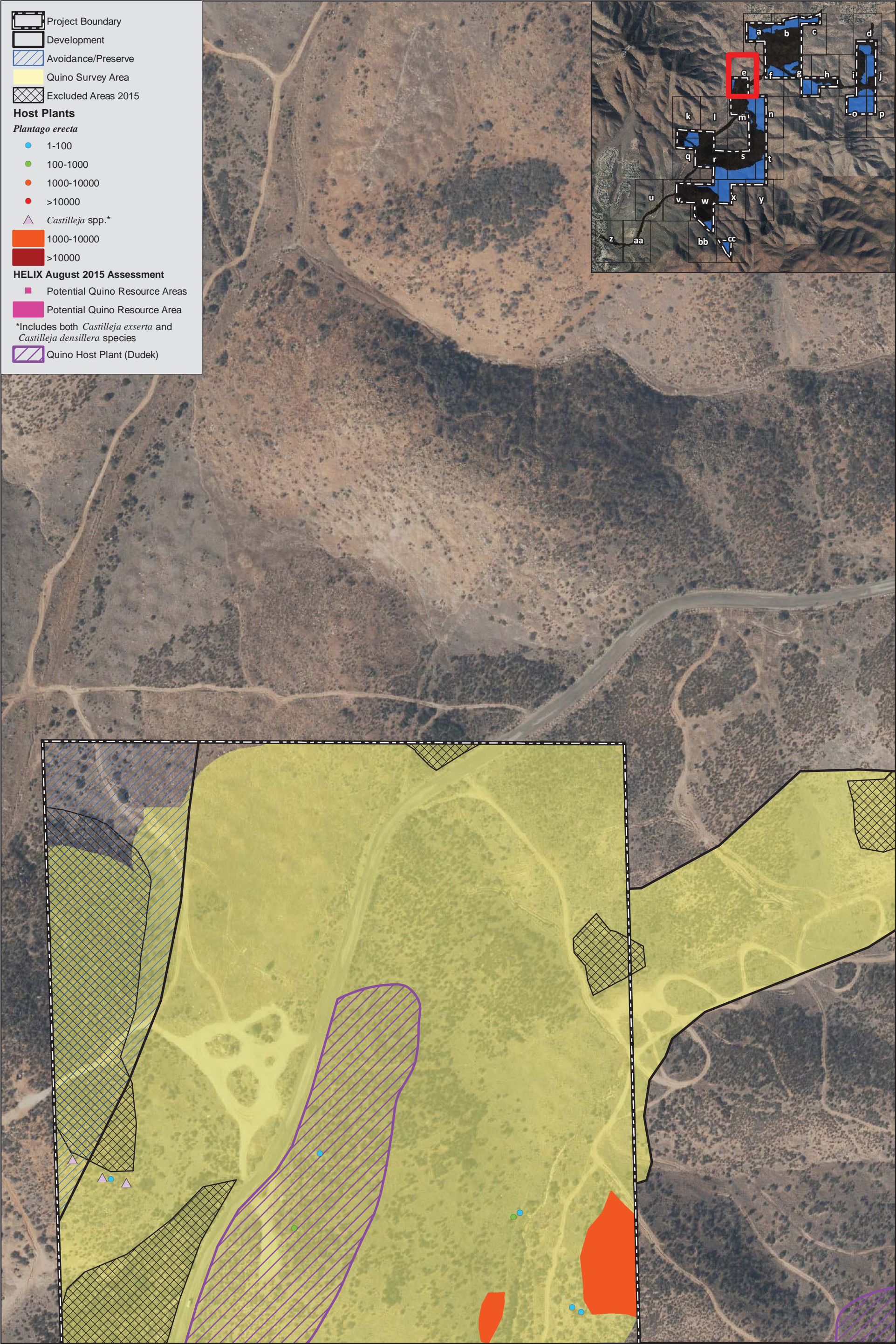
2015 Quino Host Plant Mapping, Potential Resource Areas, and Historical Locations

OTAY RANCH VILLAGE 14 AND PLANNING AREAS 16/19
DEVELOPMENT FOOTPRINT AND PRESERVE



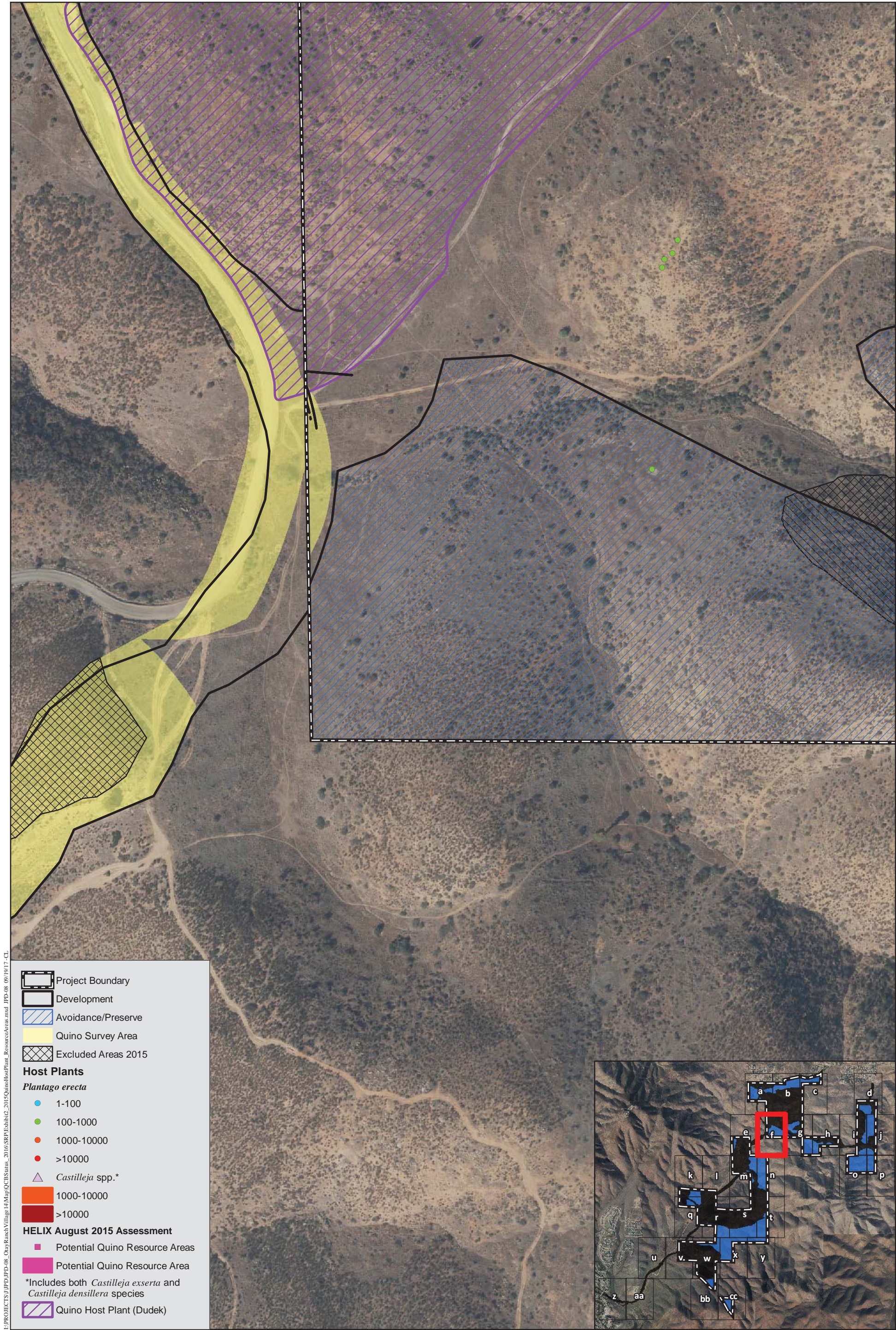
2015 Quino Host Plant Mapping, Potential Resource Areas, and Historical Locations

OTAY RANCH VILLAGE 14 AND PLANNING AREAS 16/19
DEVELOPMENT FOOTPRINT AND PRESERVE



2015 Quino Host Plant Mapping, Potential Resource Areas, and Historical Locations

OTAY RANCH VILLAGE 14 AND PLANNING AREAS 16/19
DEVELOPMENT FOOTPRINT AND PRESERVE



2015 Quino Host Plant Mapping, Potential Resource Areas, and Historical Locations

OTAY RANCH VILLAGE 14 AND PLANNING AREAS 16/19
DEVELOPMENT FOOTPRINT AND PRESERVE



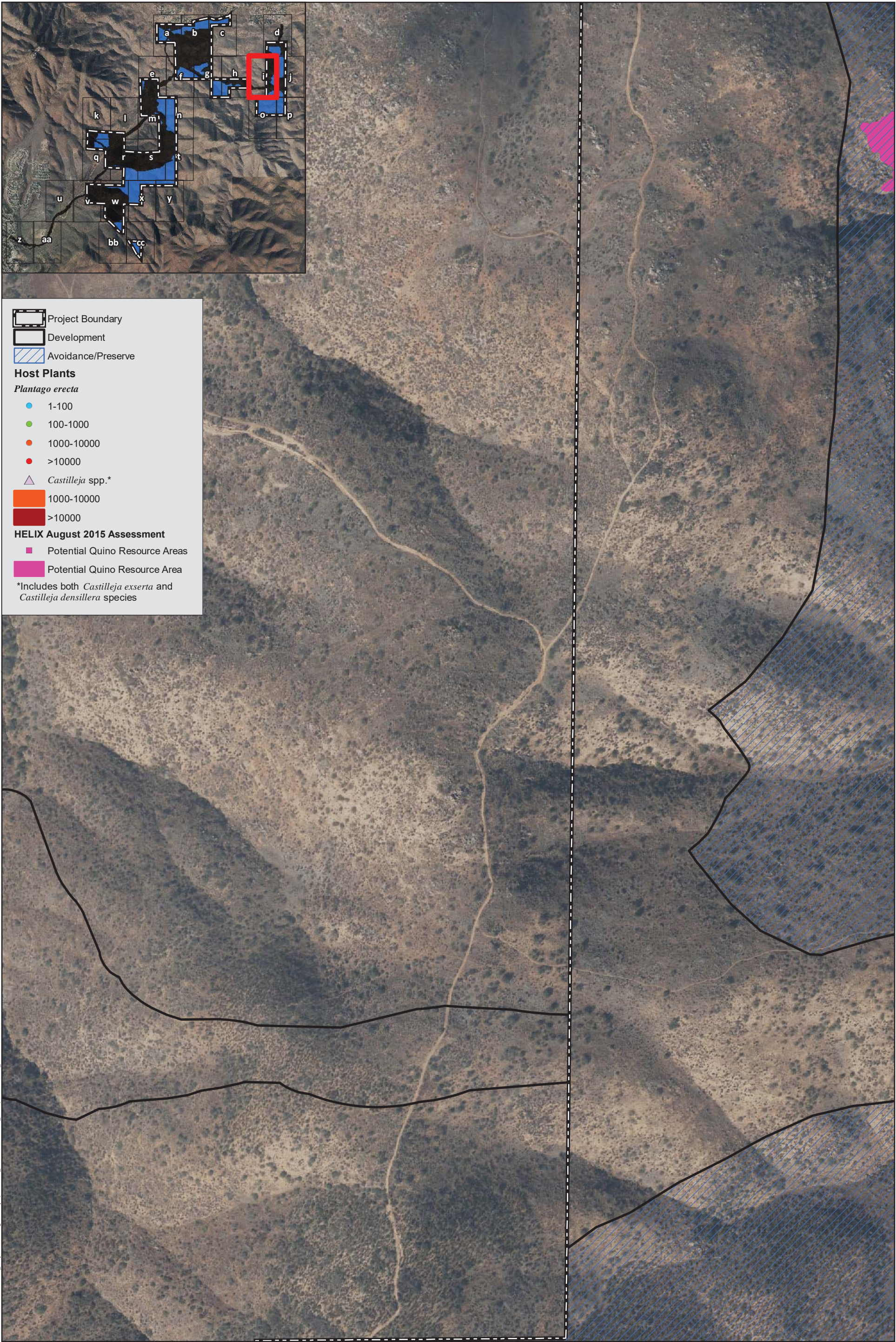
2015 Quino Host Plant Mapping, Potential Resource Areas, and Historical Locations

OTAY RANCH VILLAGE 14 AND PLANNING AREAS 16/19
DEVELOPMENT FOOTPRINT AND PRESERVE



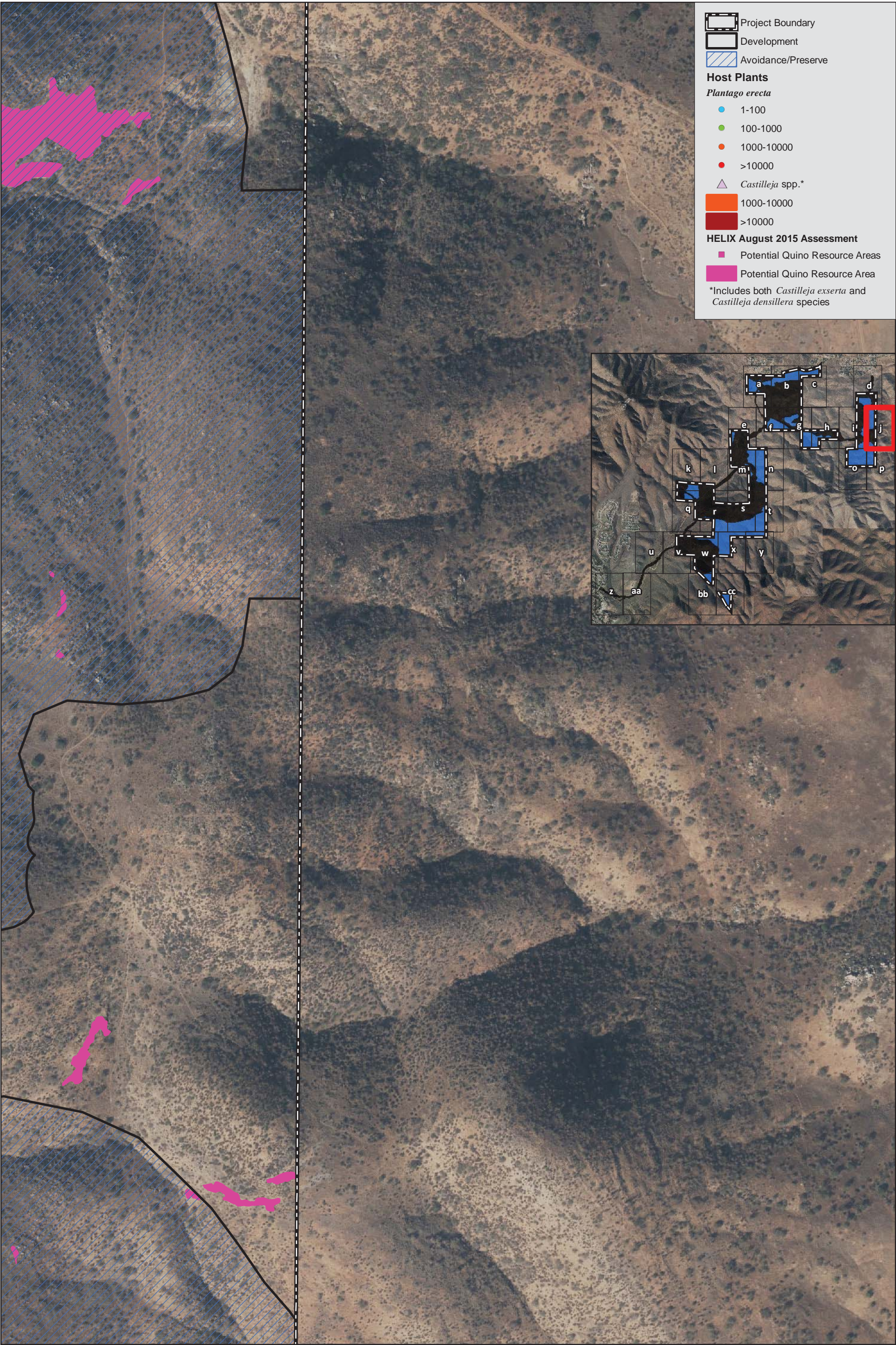
2015 Quino Host Plant Mapping, Potential Resource Areas, and Historical Locations

OTAY RANCH VILLAGE 14 AND PLANNING AREAS 16/19
DEVELOPMENT FOOTPRINT AND PRESERVE



2015 Quino Host Plant Mapping, Potential Resource Areas, and Historical Locations

OTAY RANCH VILLAGE 14 AND PLANNING AREAS 16/19
DEVELOPMENT FOOTPRINT AND PRESERVE



2015 Quino Host Plant Mapping, Potential Resource Areas, and Historical Locations

OTAY RANCH VILLAGE 14 AND PLANNING AREAS 16/19
DEVELOPMENT FOOTPRINT AND PRESERVE