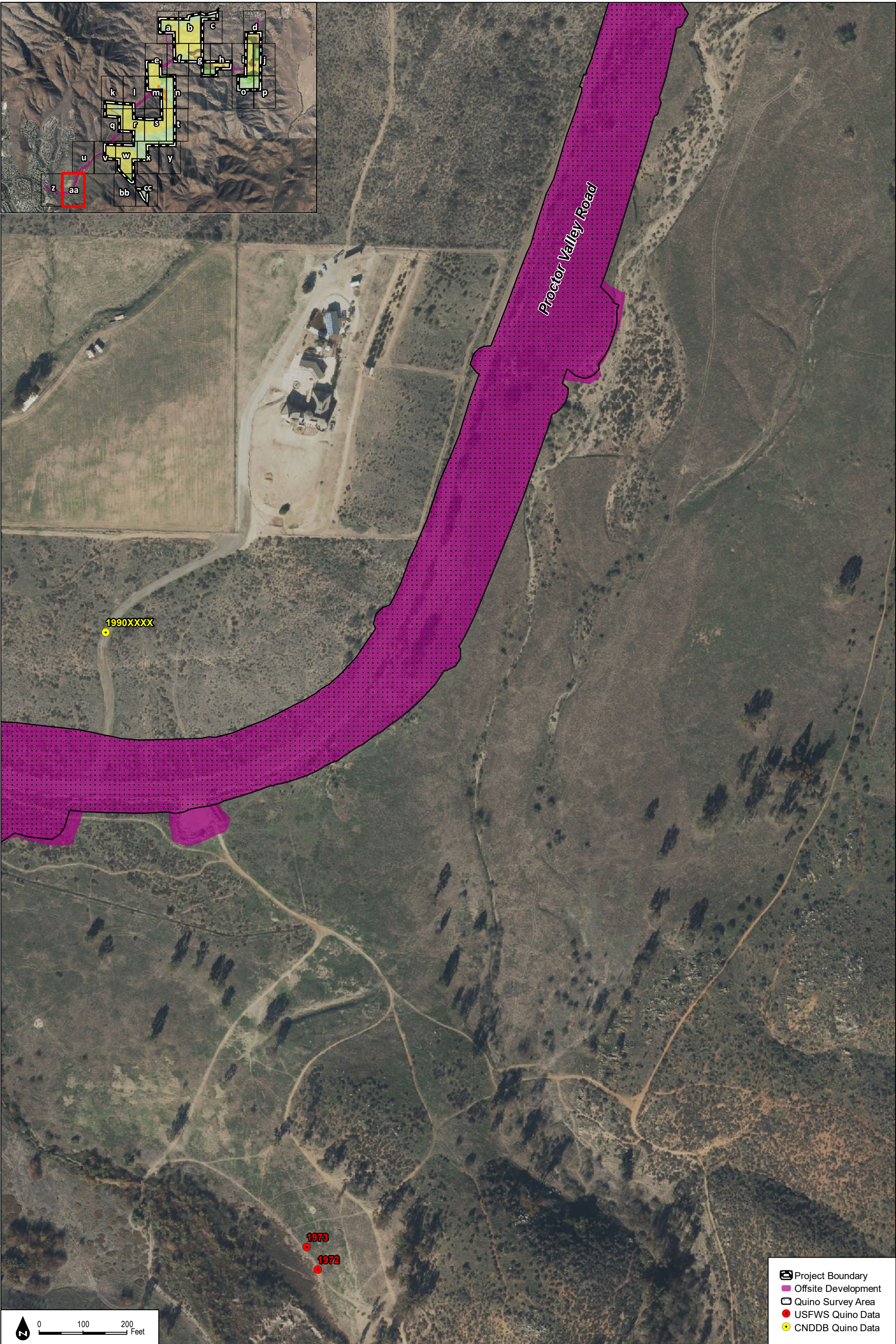


SOURCE: NAIP 2016, Hunsacker 2017, HELIX 2016

Figure 2.4-12z
2016 Quino Host Plant Mapping and Historical Locations

INTENTIONALLY LEFT BLANK



SOURCE: NAIP 2016, Hunsacker 2017, HELIX 2016

DUDEK

Otay Ranch Village 14 and Planning Areas 16/19

Figure 2.4-12aa
2016 Quino Host Plant Mapping and Historical Locations

INTENTIONALLY LEFT BLANK



SOURCE: NAIP 2016, Hunsacker 2017, HELIX 2016

Figure 2.4-12bb
2016 Quino Host Plant Mapping and Historical Locations

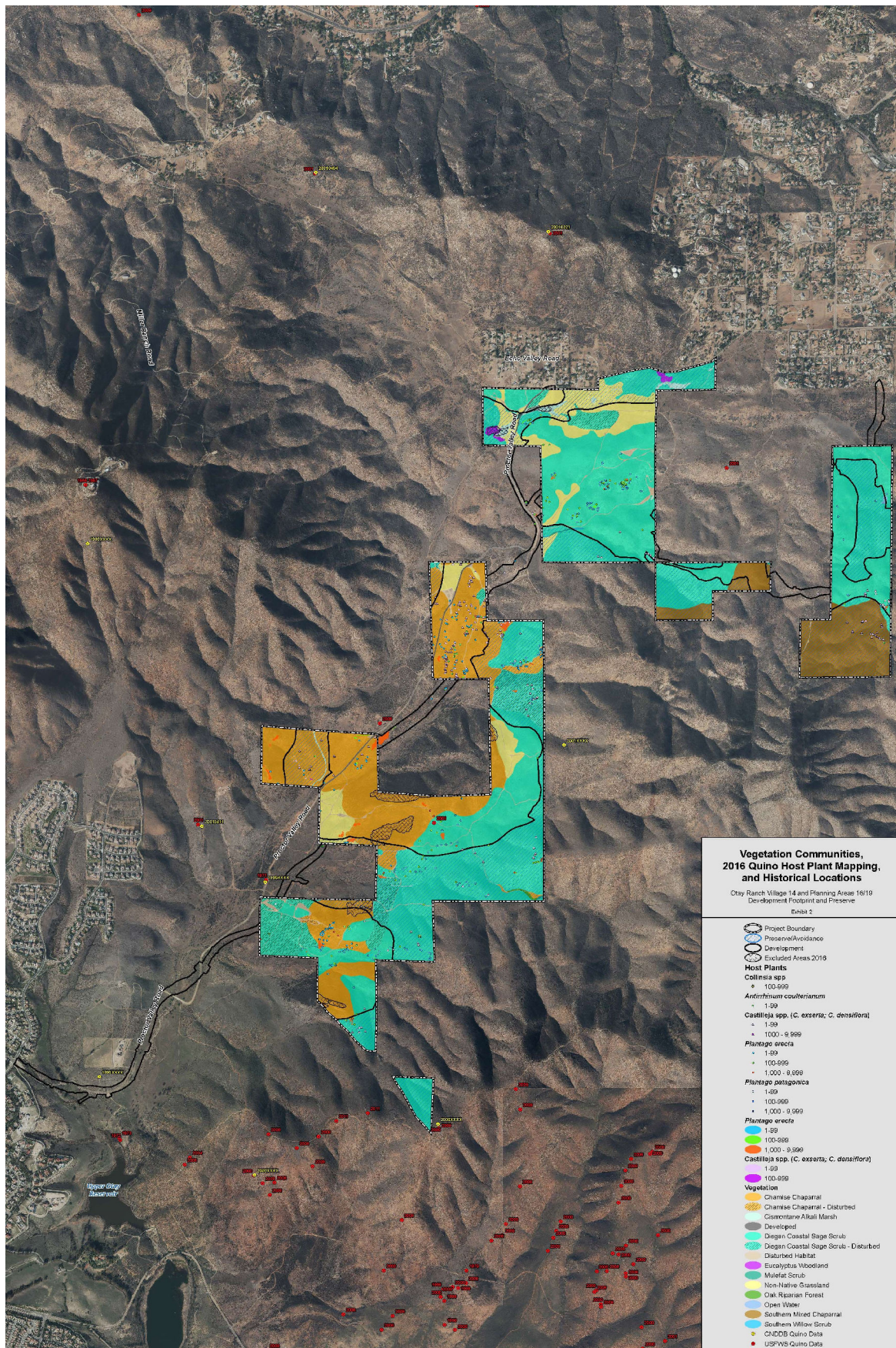
INTENTIONALLY LEFT BLANK



SOURCE: NAIP 2016, Hunsacker 2017, HELIX 2016

Figure 2.4-12cc
2016 Quino Host Plant Mapping and Historical Locations

INTENTIONALLY LEFT BLANK



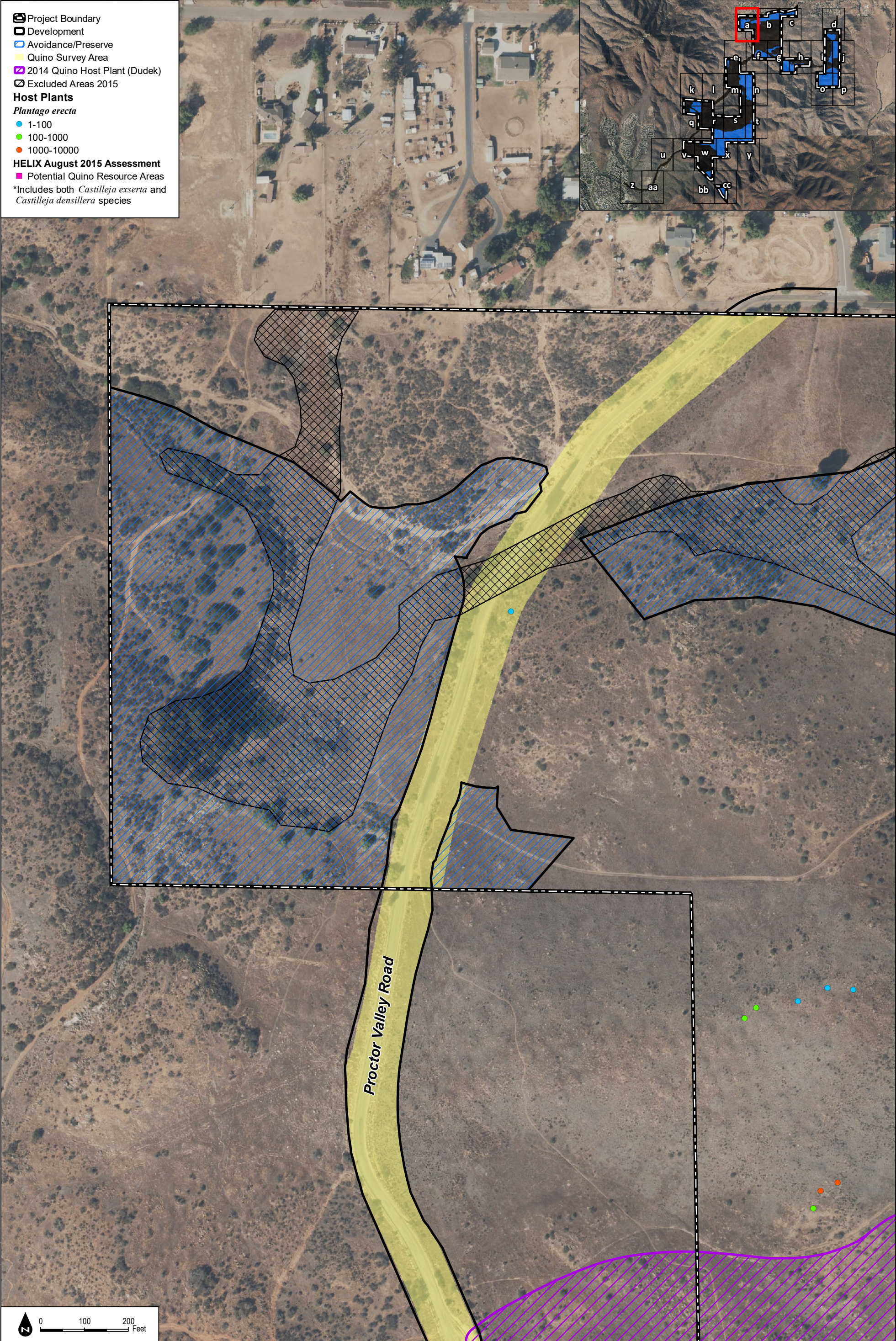
SOURCE: Helix 2017

FIGURE 2.4-13

Vegetation Communities, 2016 Quino Host Plant, and Historical Locations

Otay Ranch Village 14 and Planning Areas 16/19

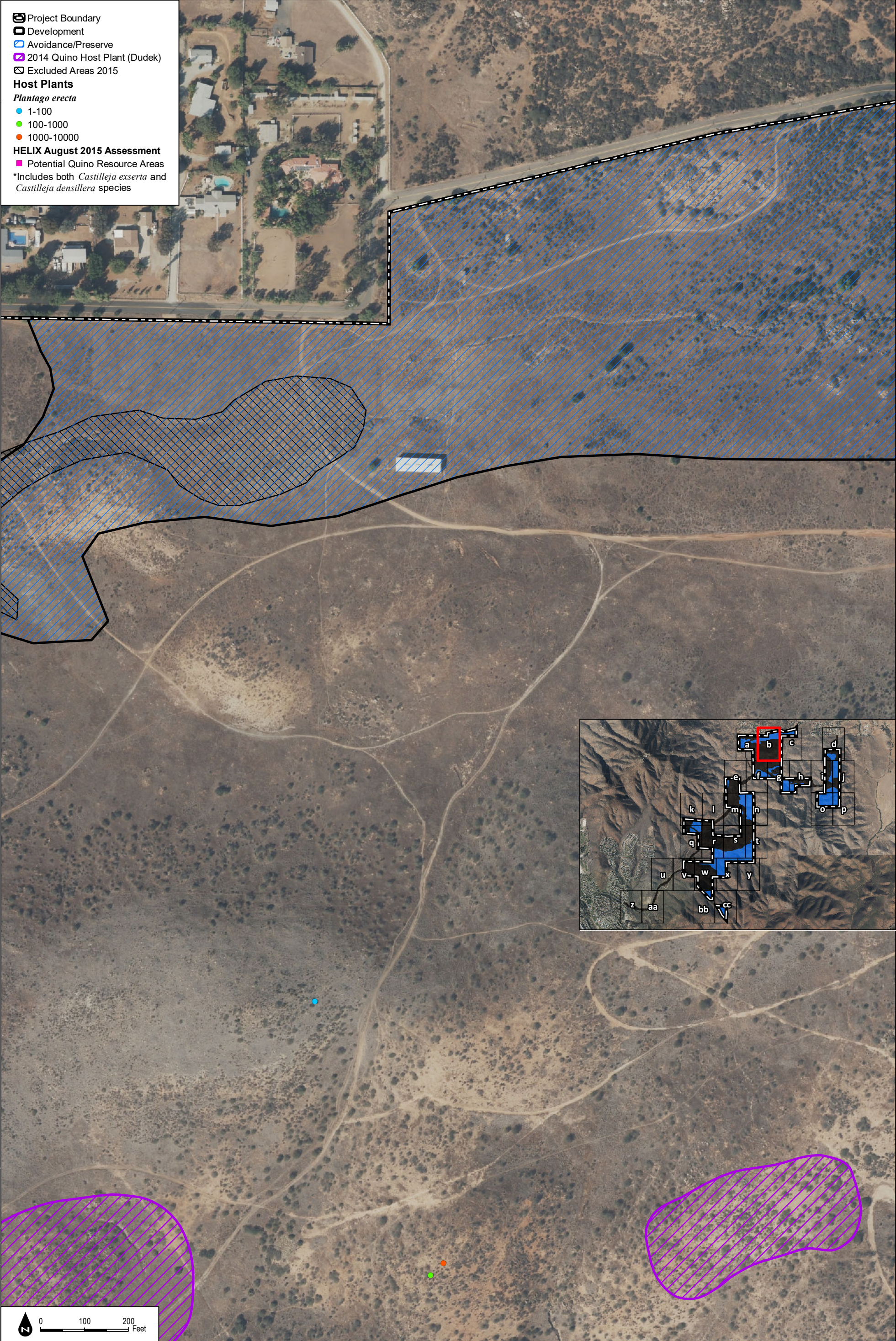
INTENTIONALLY LEFT BLANK



SOURCE: NAIP 2016, Hunsacker 2017, HELIX 2016

Figure 2.4-13a
2015 Quino Host Plant Mapping, Potential Resource Areas, and Historical Locations

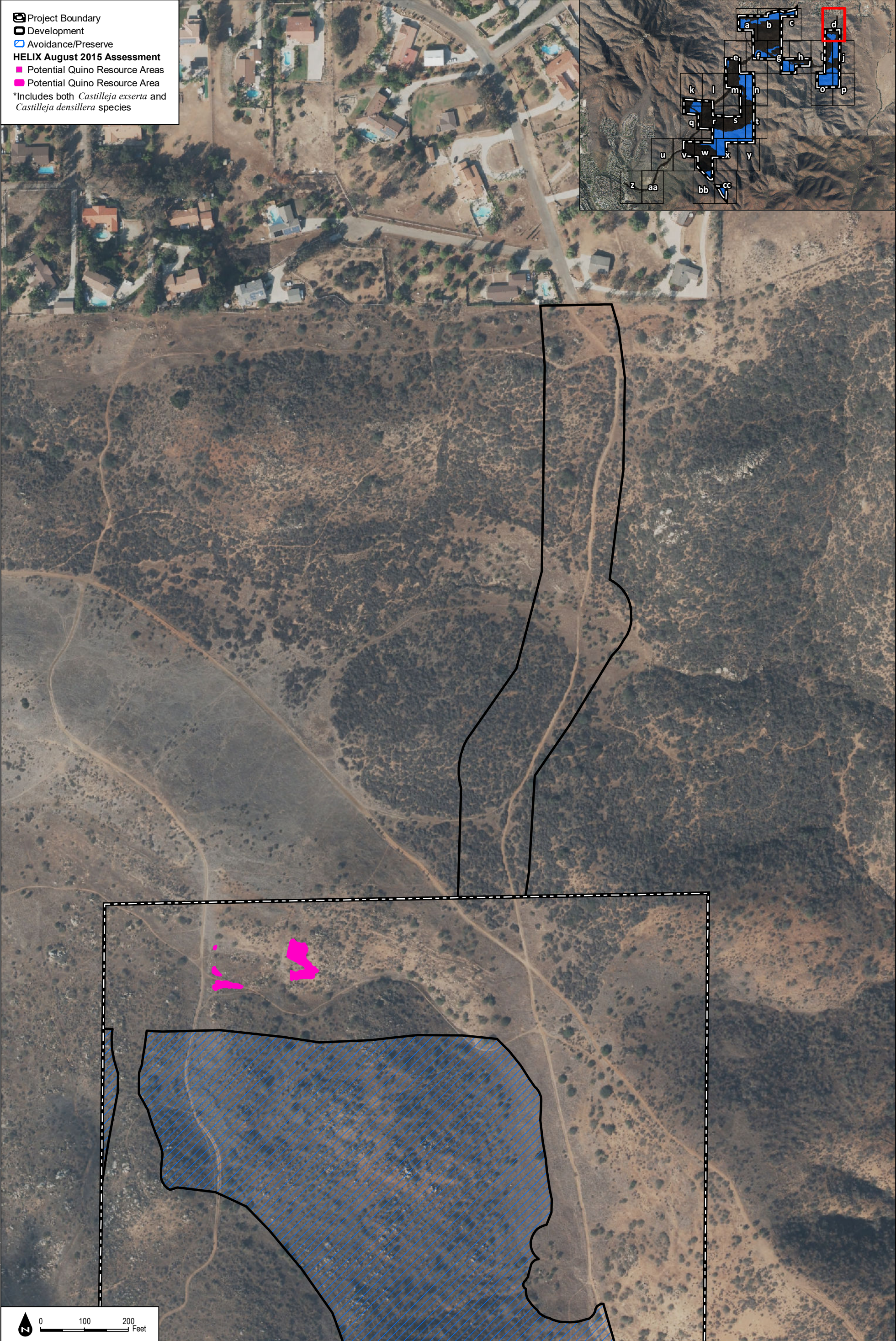
INTENTIONALLY LEFT BLANK



INTENTIONALLY LEFT BLANK



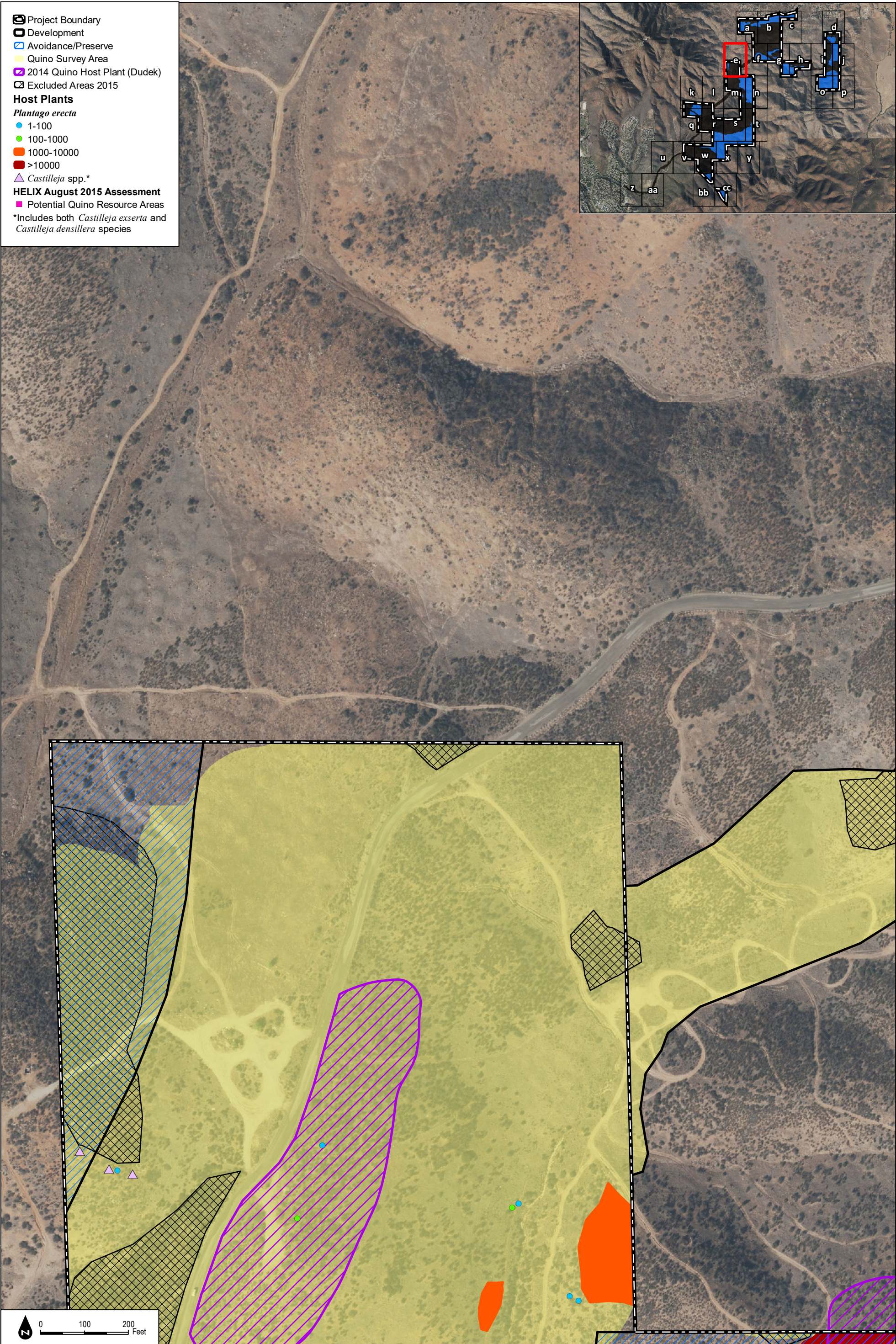
INTENTIONALLY LEFT BLANK



SOURCE: NAIP 2016, Hunsacker 2017, HELIX 2016

Figure 2.4-13d
2015 Quino Host Plant Mapping, Potential Resource Areas, and Historical Locations

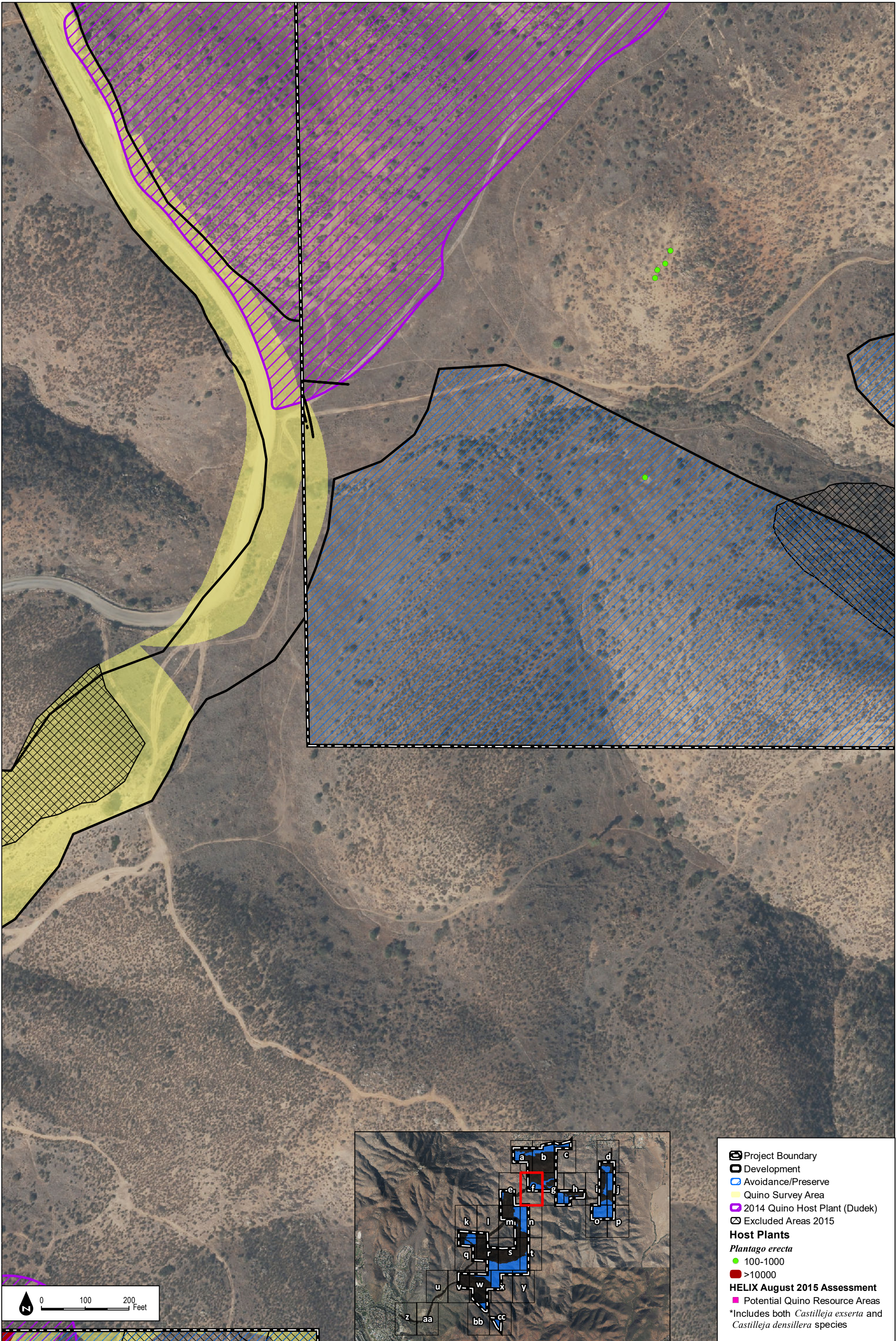
INTENTIONALLY LEFT BLANK



SOURCE: NAIP 2016, Hunsacker 2017, HELIX 2016

Figure 2.4-13e
2015 Quino Host Plant Mapping, Potential Resource Areas, and Historical Locations

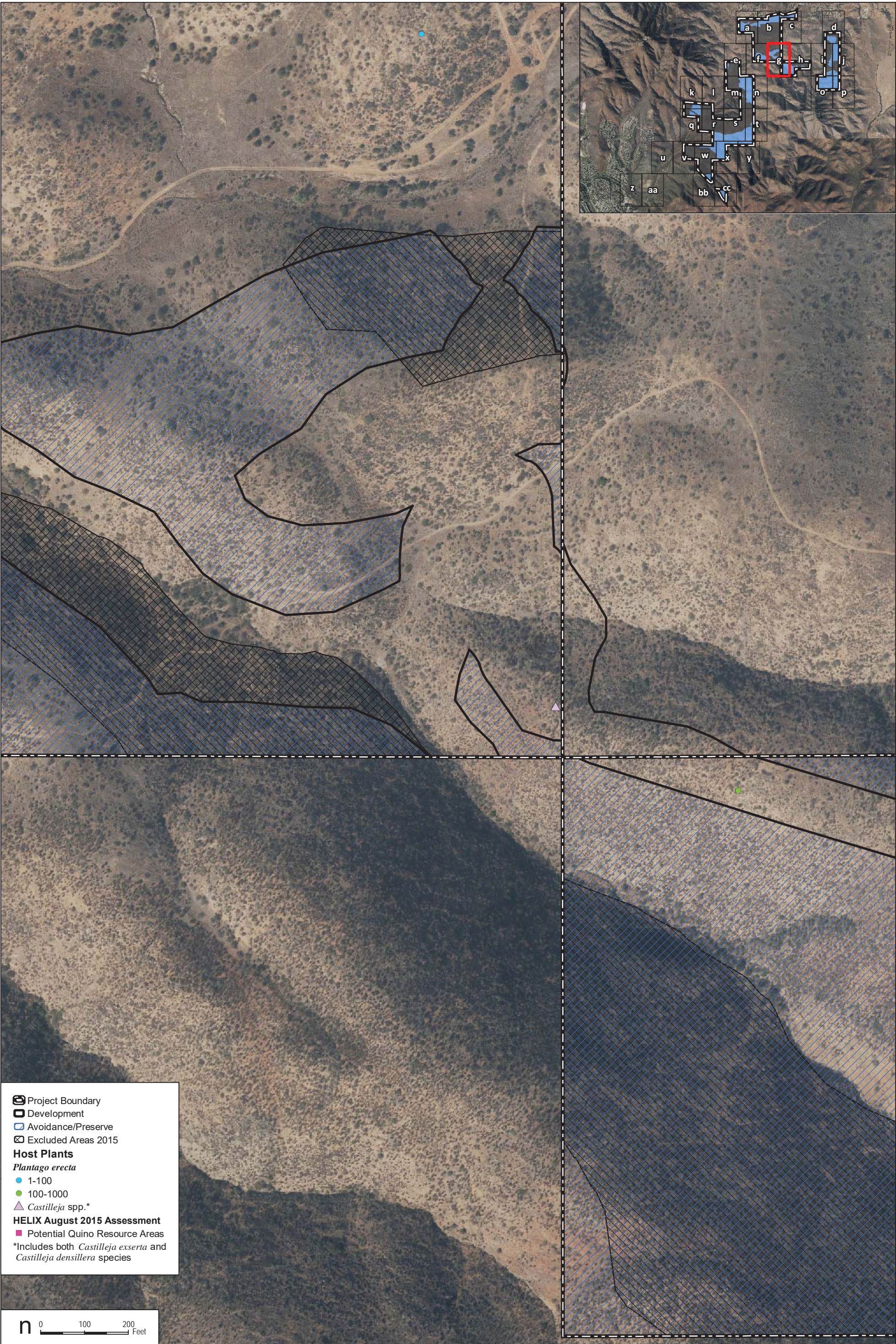
INTENTIONALLY LEFT BLANK



SOURCE: NAIP 2016, Hunsacker 2017, HELIX 2016

Figure 2.4-13f
2015 Quino Host Plant Mapping, Potential Resource Areas, and Historical Locations

INTENTIONALLY LEFT BLANK



SOURCE: NAIP 2016, Hunsacker 2017, HELIX 2016

Figure 2.4-13g
2015 Quino Host Plant Mapping, Potential Resource Areas, and Historical Locations

INTENTIONALLY LEFT BLANK



INTENTIONALLY LEFT BLANK