

SOURCE: NAIP 2016, Hunsacker 2017, HELIX 2016

Figure 2.4-13z
2015 Quino Host Plant Mapping, Potential Resource Areas, and Historical Locations

Otay Ranch Village 14 and Planning Areas 16/19

INTENTIONALLY LEFT BLANK



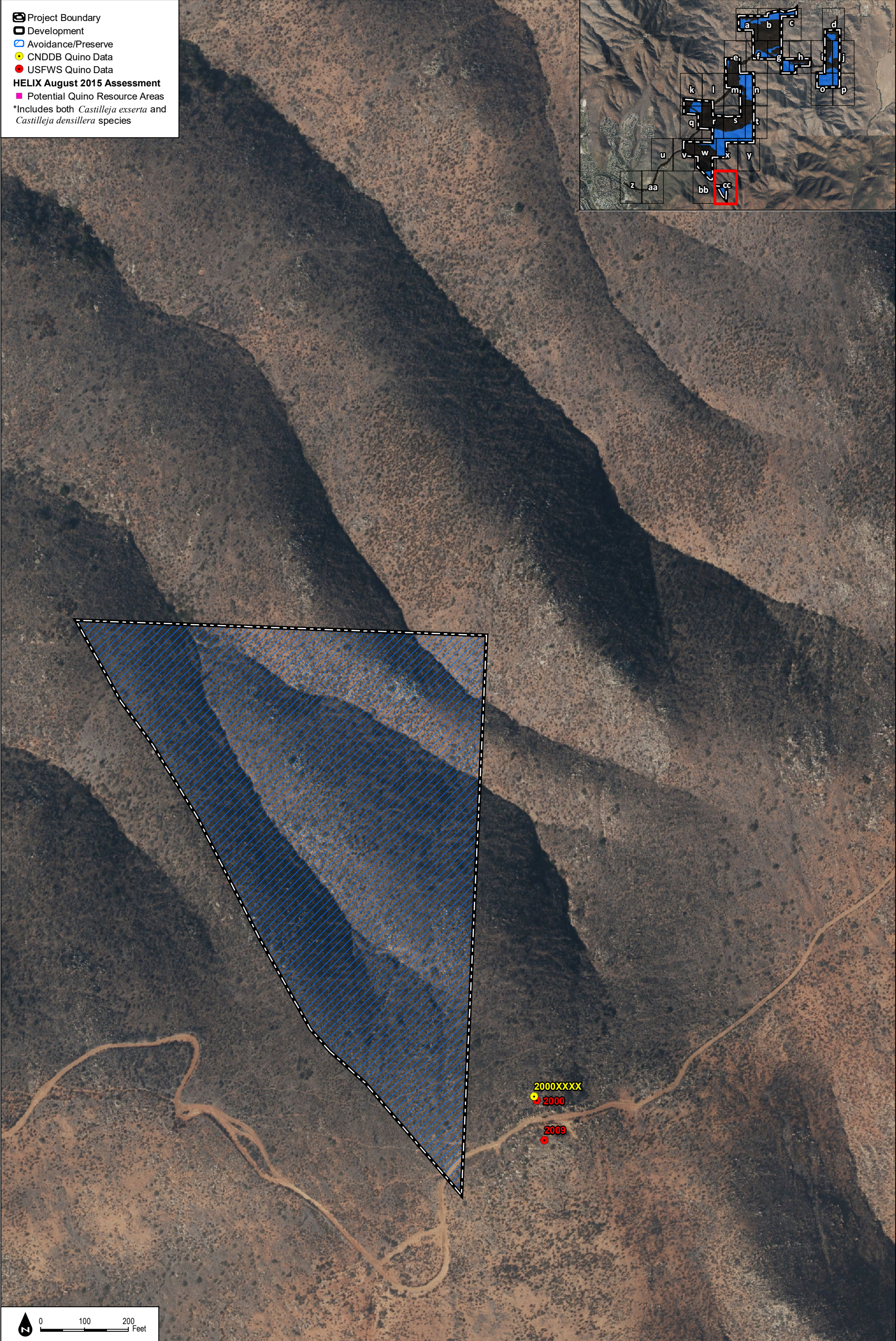
SOURCE: NAIP 2016, Hunsacker 2017, HELIX 2016

Figure 2.4-13aa
2015 Quino Host Plant Mapping, Potential Resource Areas, and Historical Locations

INTENTIONALLY LEFT BLANK



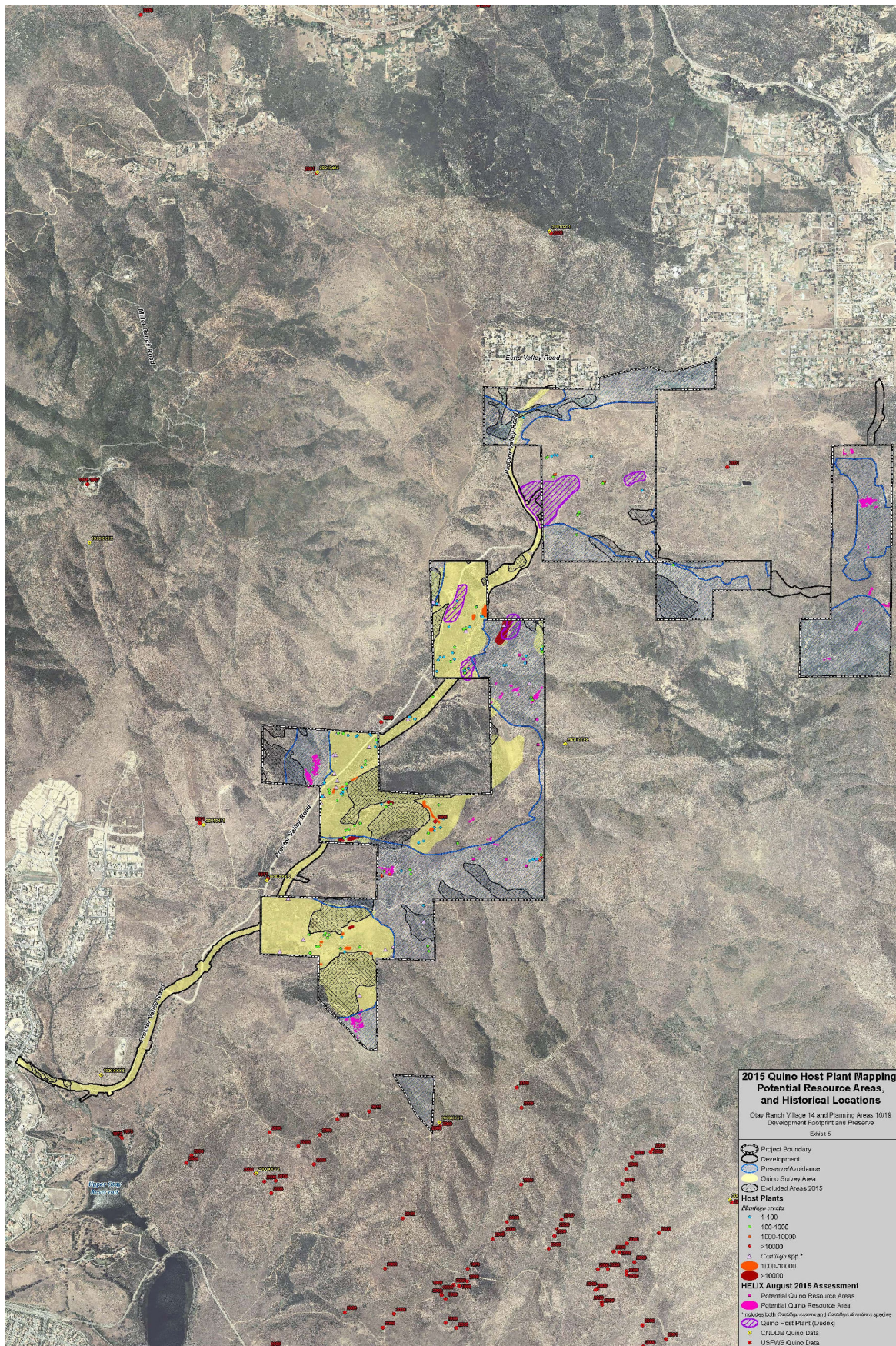
INTENTIONALLY LEFT BLANK



SOURCE: NAIP 2016, Hunsacker 2017, HELIX 2016

Figure 2.4-13cc
2015 Quino Host Plant Mapping, Potential Resource Areas, and Historical Locations

INTENTIONALLY LEFT BLANK



SOURCE: Helix 2017

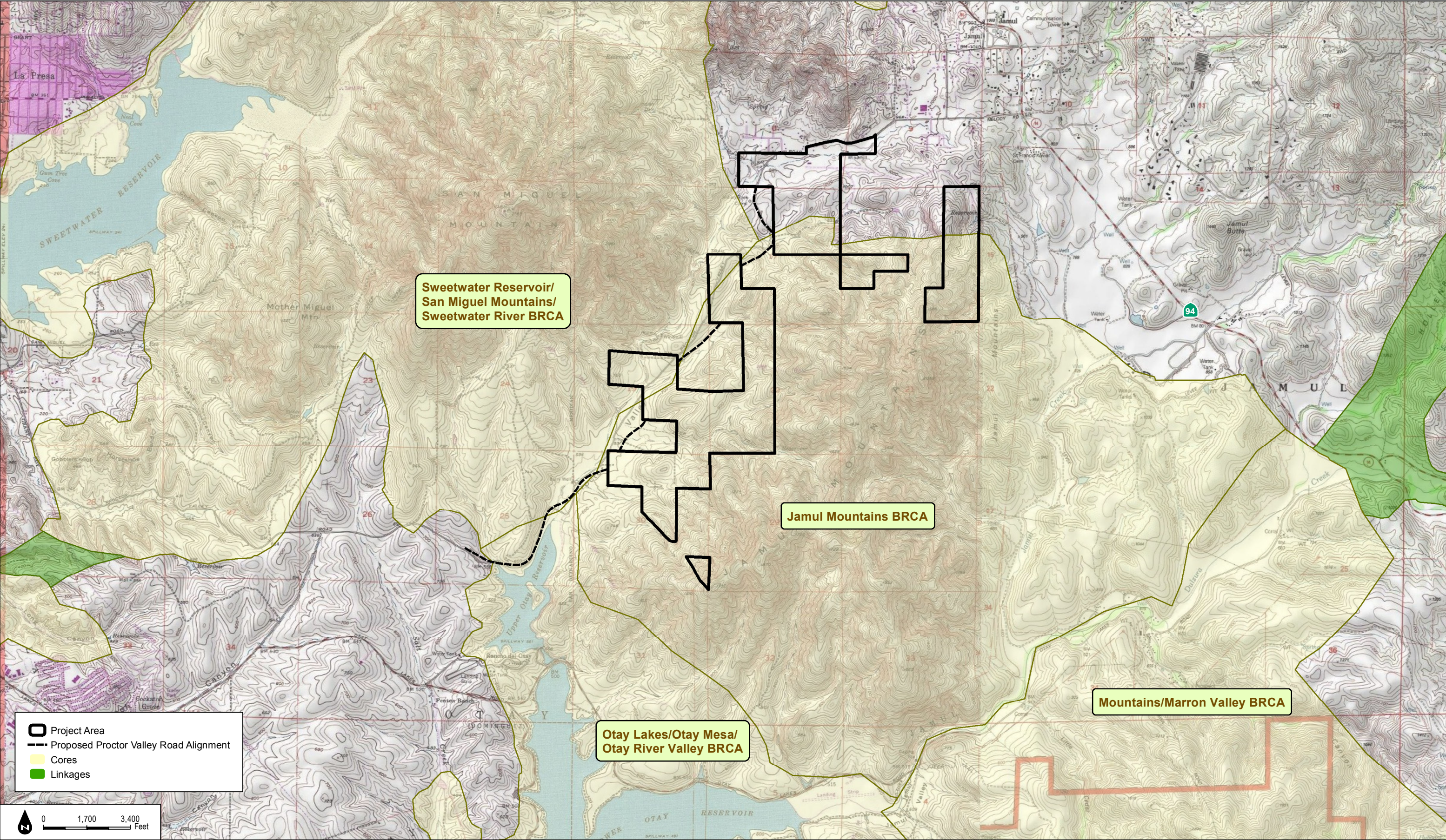
FIGURE 2.4-14

DUDEK

2015 Quino Host Plant Mapping, Potential Resource Areas, and Historical Locations

Otay Ranch Village 14 and Planning Areas 16/19

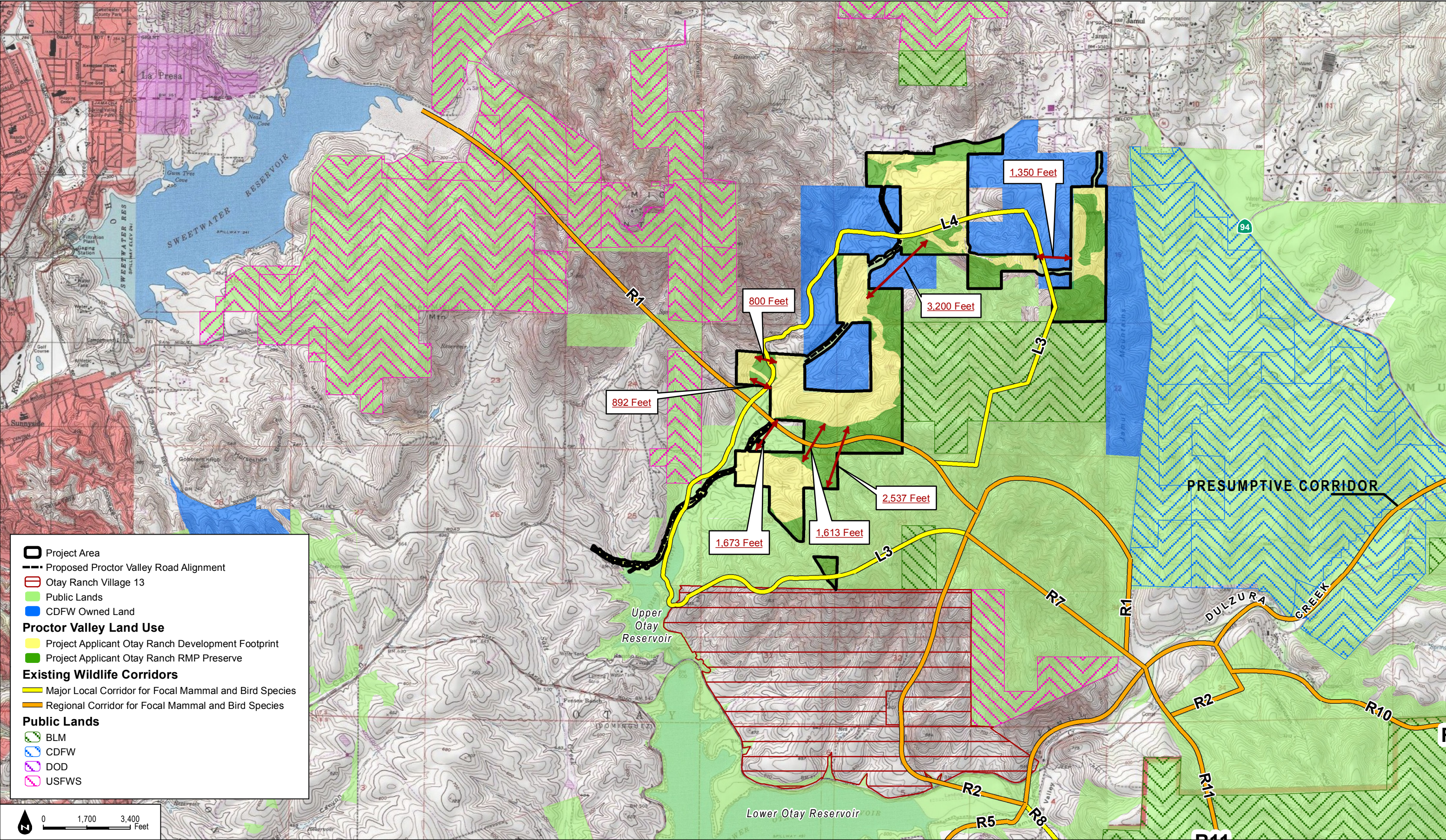
INTENTIONALLY LEFT BLANK



SOURCE: USGS 7.5-minute Topographic Map; Hunsaker 2017; SANGIS 2016

FIGURE 2.4-15
Biological Resources Core Area

INTENTIONALLY LEFT BLANK



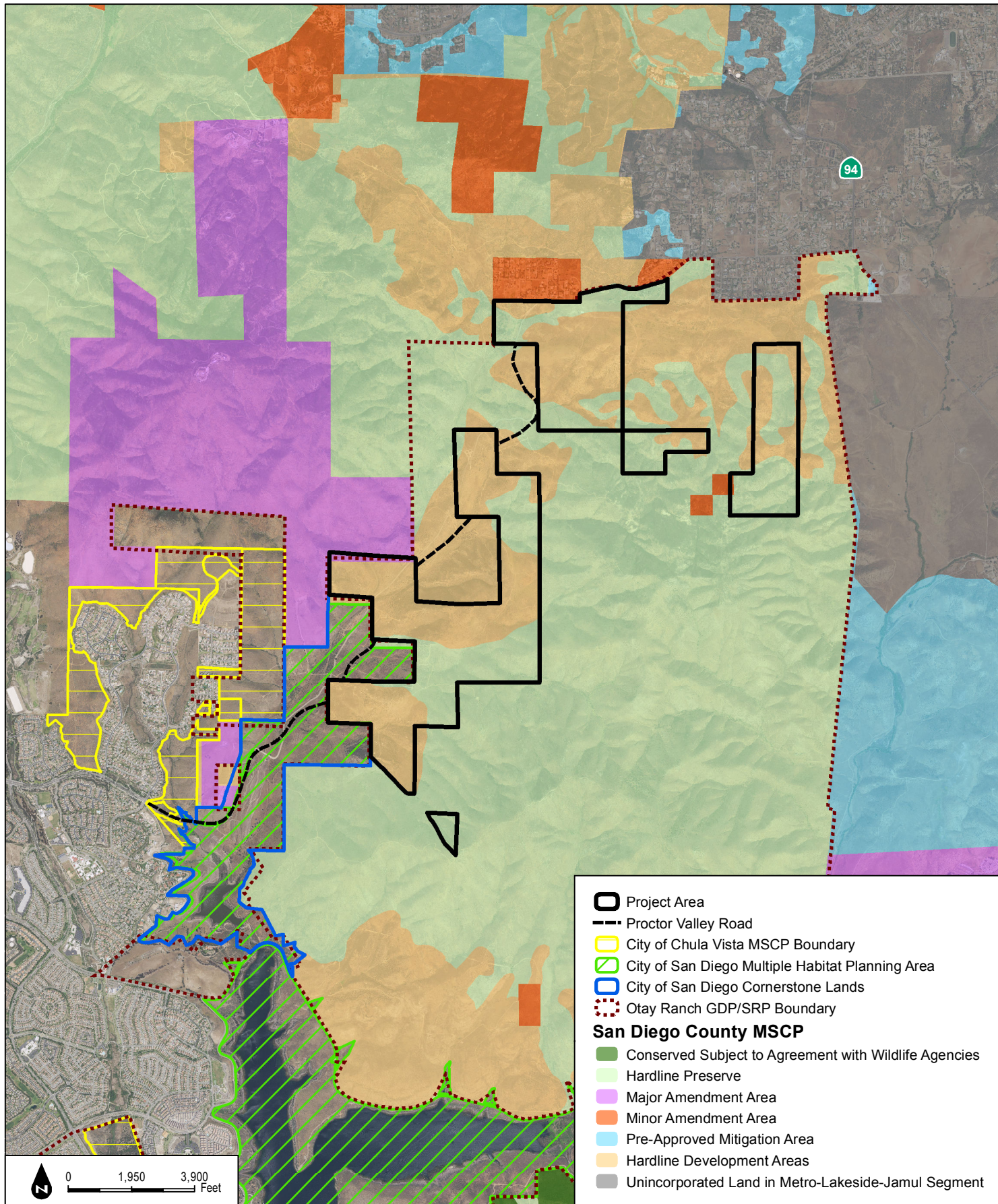
SOURCE: USGS 7.5-minute Topographic Map; Hunsaker 2017; SANGIS 2003; OGDEN 1992

DUDEK

Otay Ranch Village 14 and Planning Areas 16/19

FIGURE 2.4-16
Wildlife Corridor and Habitat Linkages

INTENTIONALLY LEFT BLANK

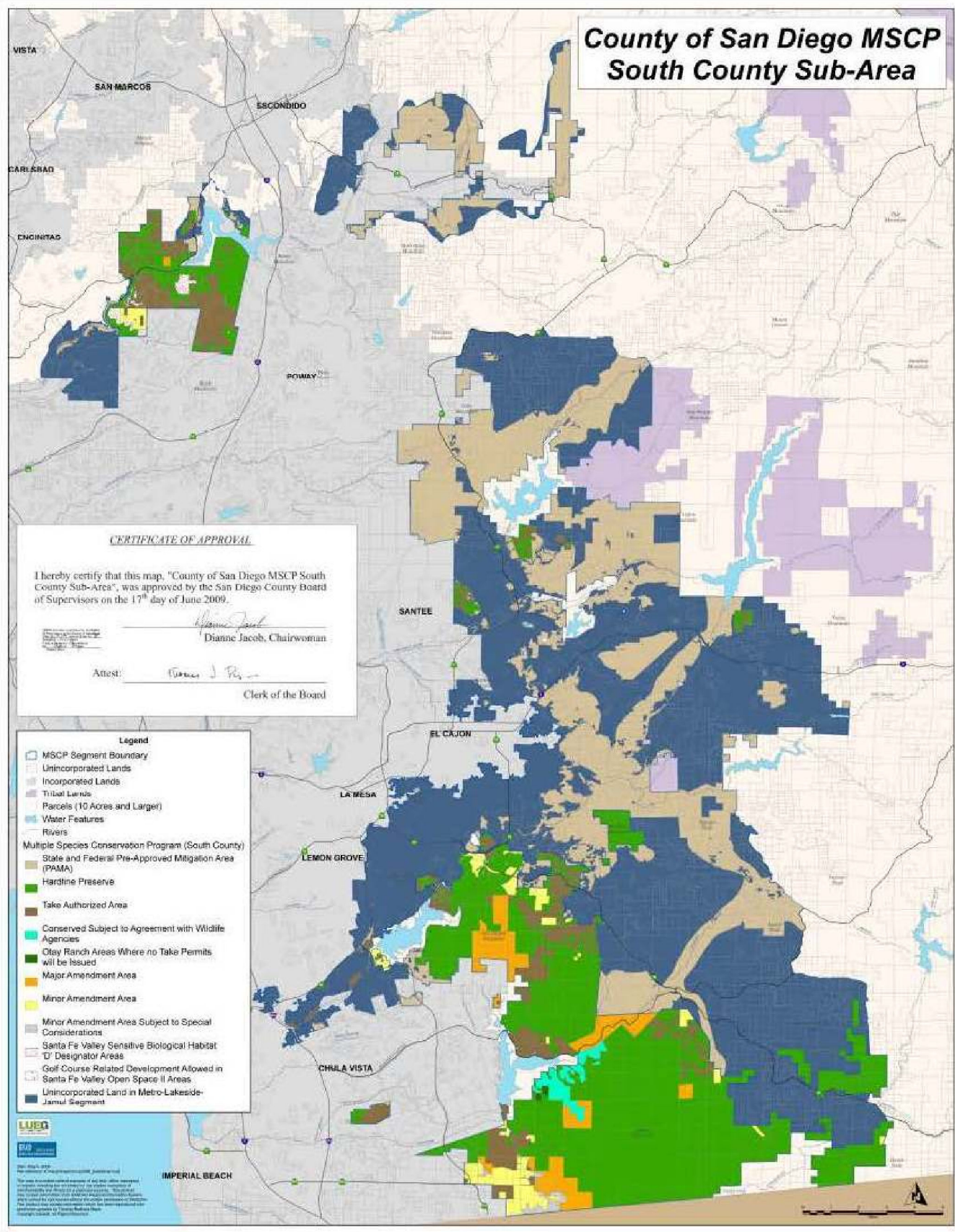


SOURCE: NAIP 2016; Hunsaker 2017;
SANGIS 2003, 2010; City of Chula Vista 2003

FIGURE 2-4.17
Regional Planning Context

Otay Ranch Village 14 and Planning Areas 16/19

INTENTIONALLY LEFT BLANK



SOURCE: San Diego County 2010

FIGURE 2-4.18

County of San Diego MSCP South County Sub-Area

Otay Ranch Village 14 and Planning Areas 16/19

INTENTIONALLY LEFT BLANK