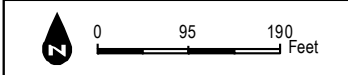
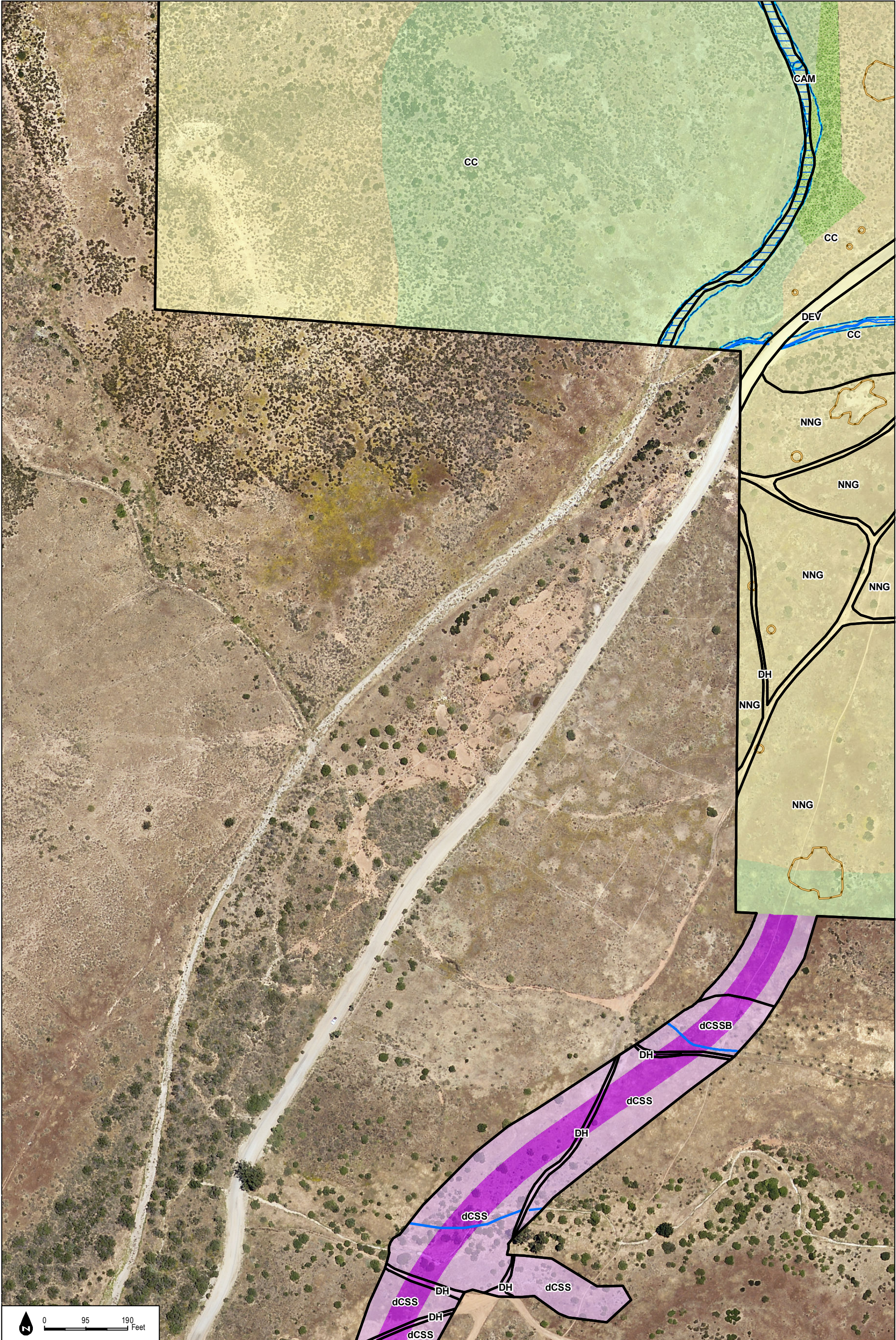
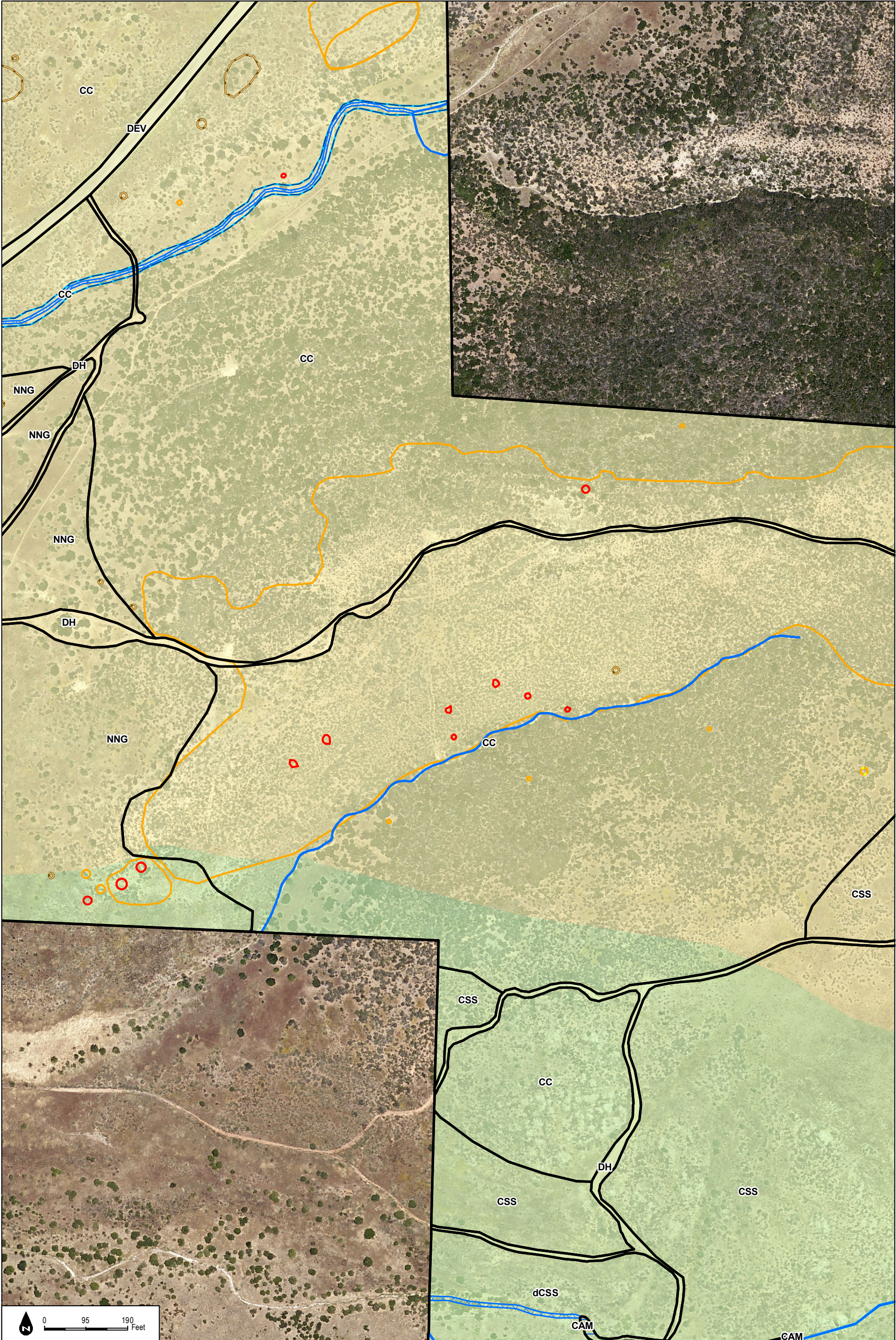


INTENTIONALLY LEFT BLANK



INTENTIONALLY LEFT BLANK



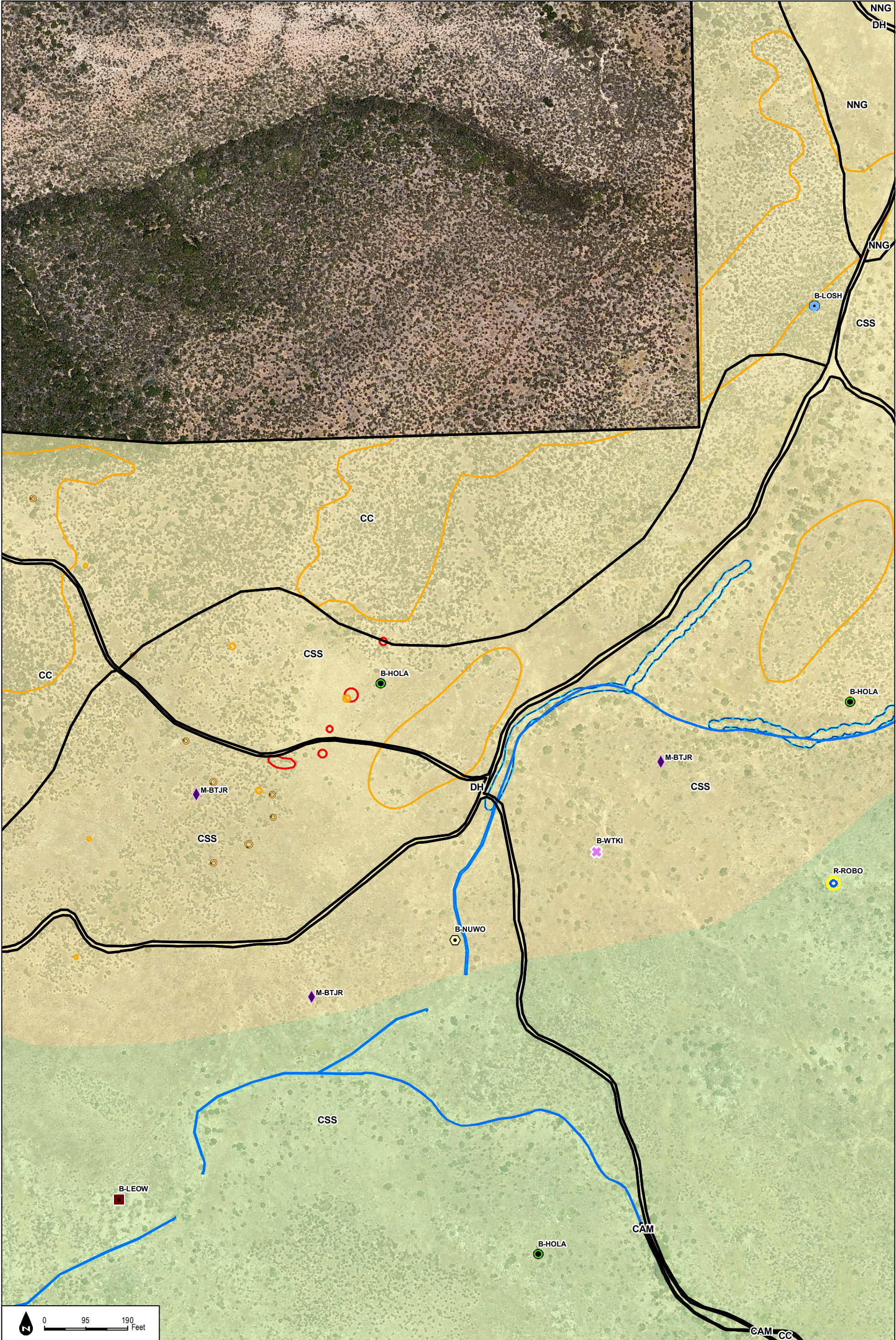
SOURCE: NAIP 2016; Hunsaker 2017

DUDEK

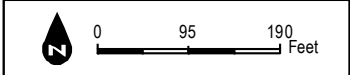
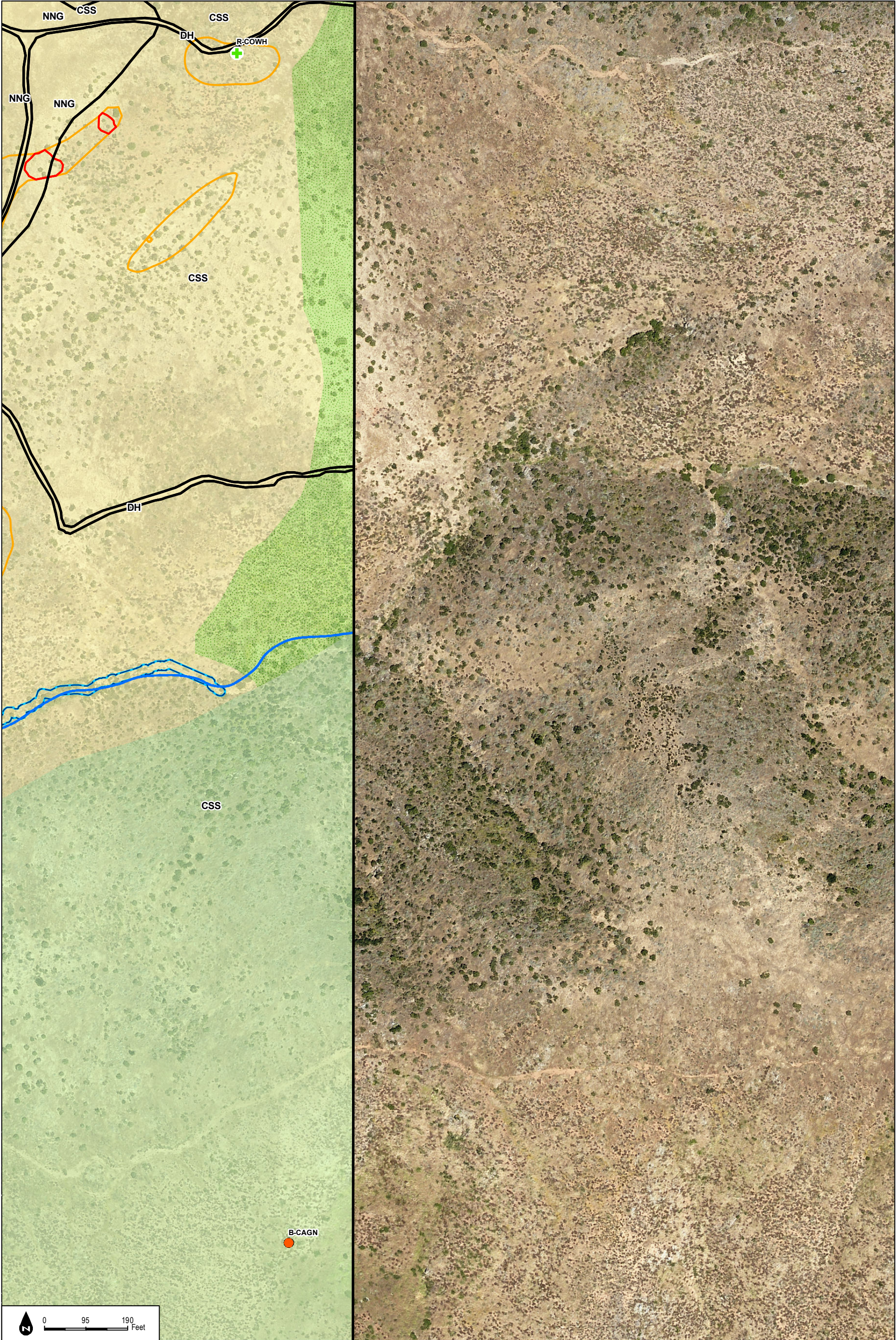
Otay Ranch Village 14 and Planning Areas 16/19

Figure 2.4-19r
Impacts to Biological Resources

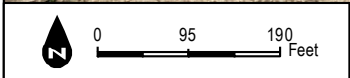
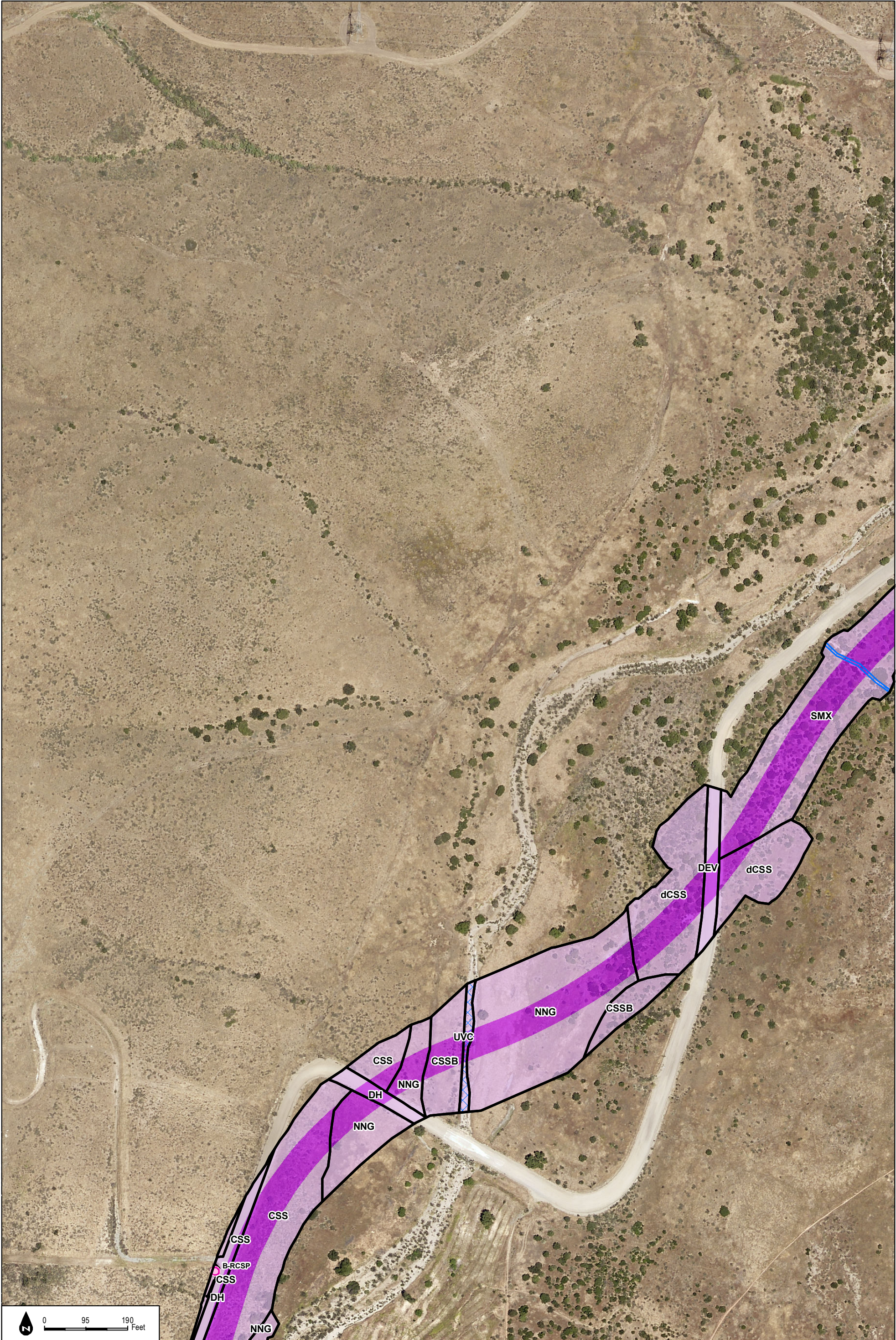
INTENTIONALLY LEFT BLANK



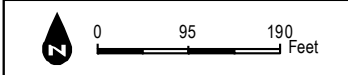
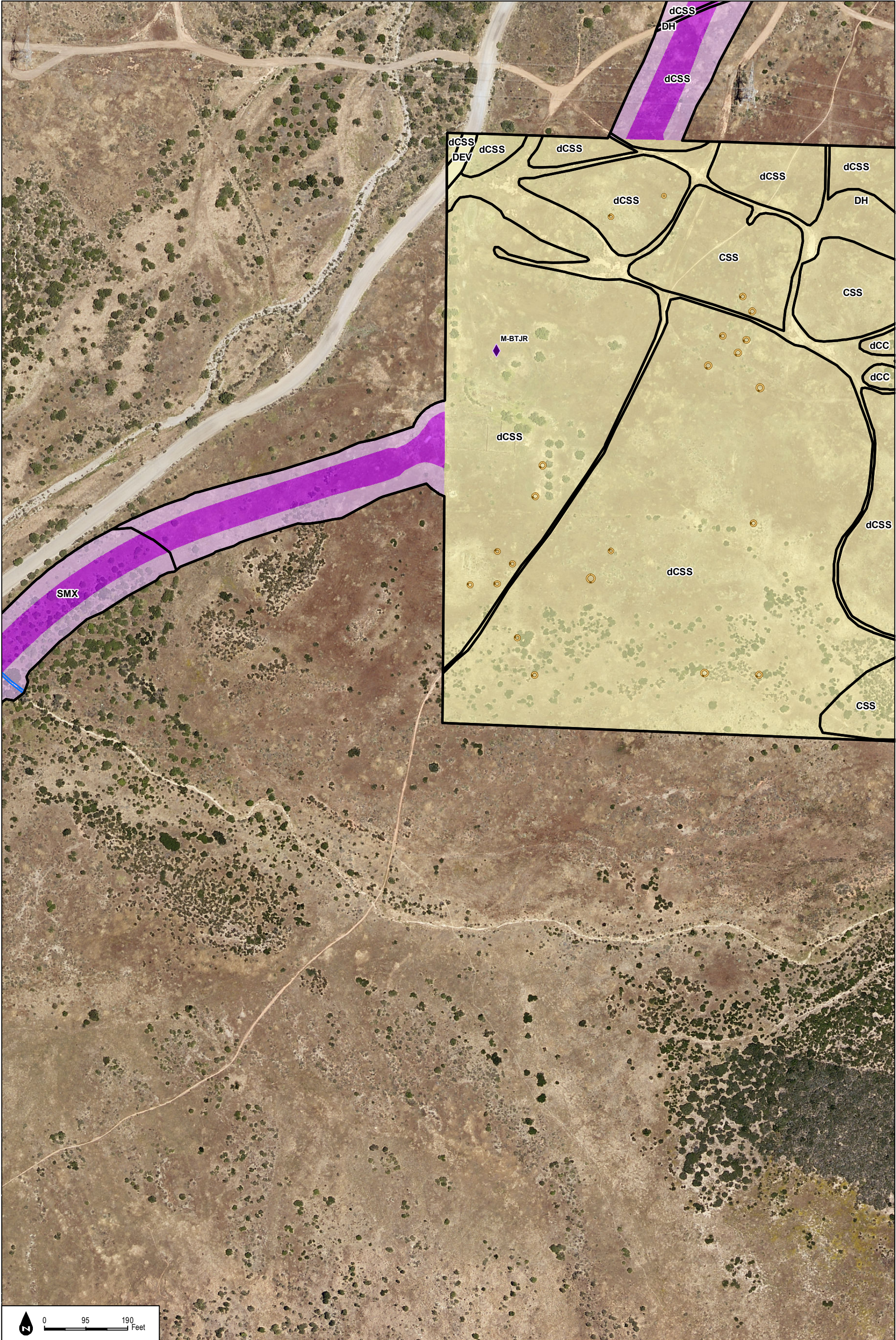
INTENTIONALLY LEFT BLANK



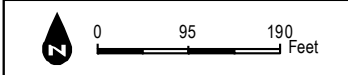
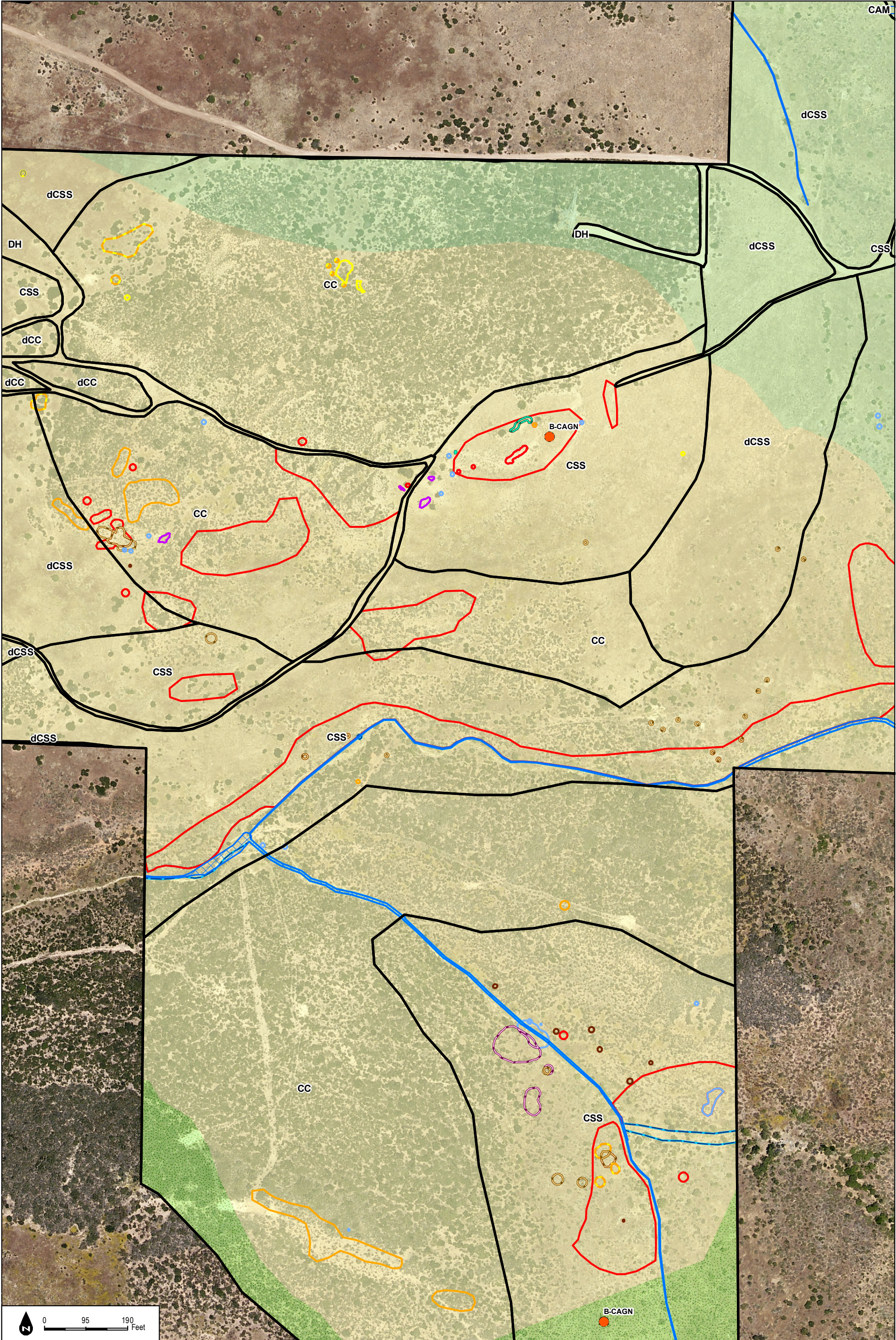
INTENTIONALLY LEFT BLANK



INTENTIONALLY LEFT BLANK



INTENTIONALLY LEFT BLANK



INTENTIONALLY LEFT BLANK

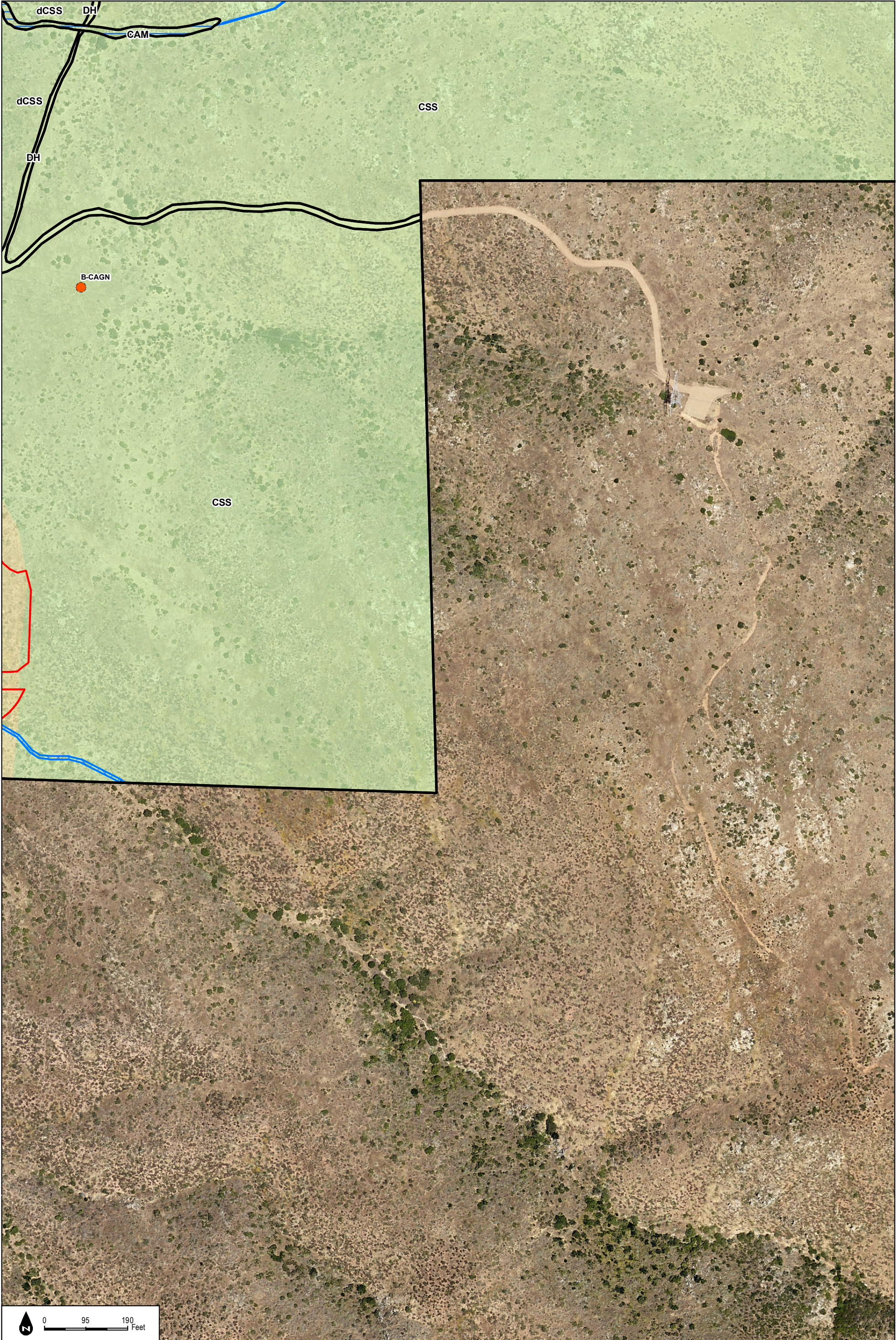
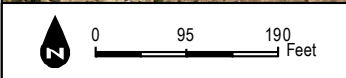
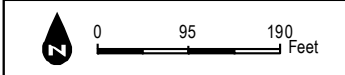
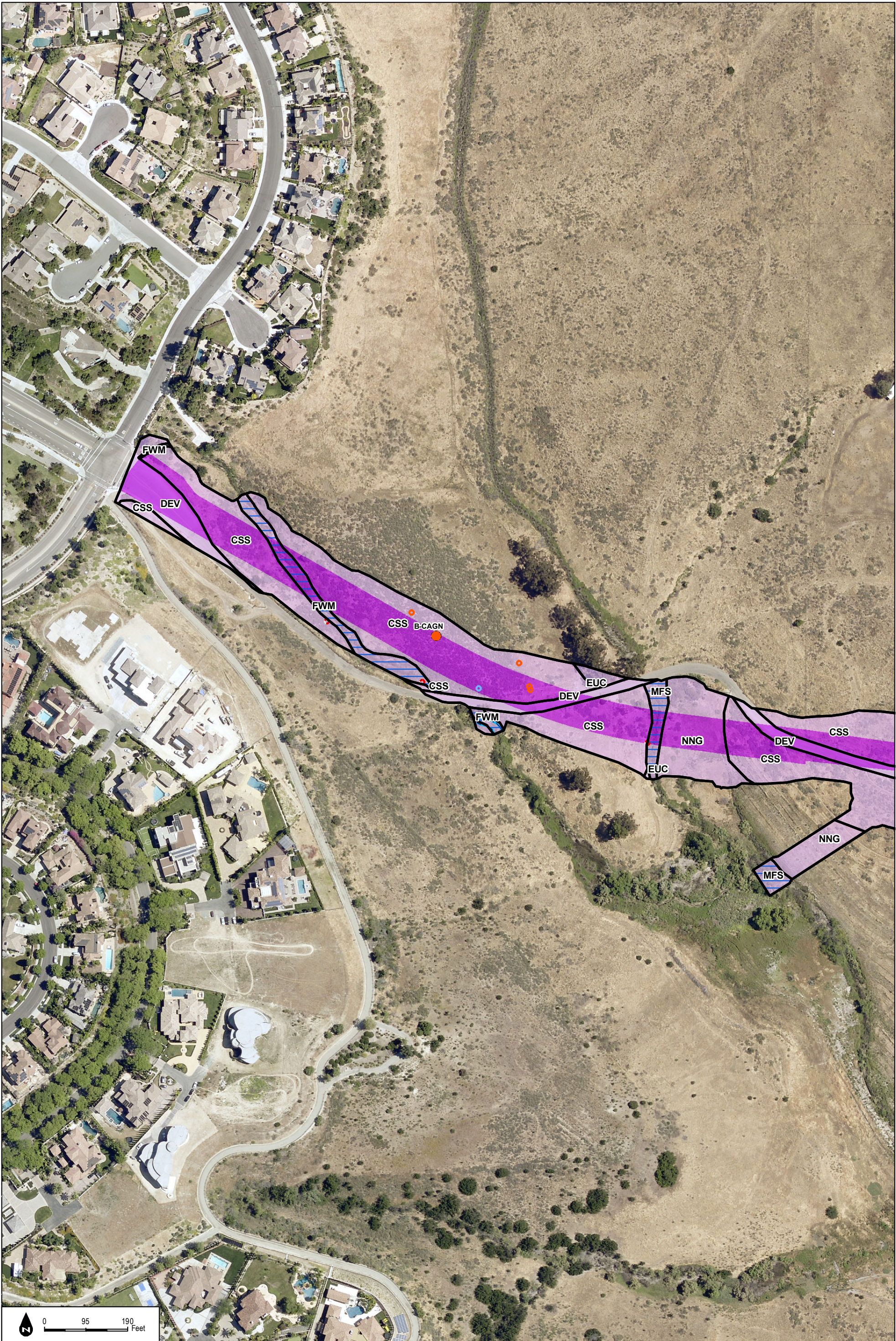


Figure 2.4-19x
Impacts to Biological Resources

INTENTIONALLY LEFT BLANK



INTENTIONALLY LEFT BLANK



DUDEK

SOURCE: NAIP 2016; Hunsaker 2017

Otay Ranch Village 14 and Planning Areas 16/19

Figure 2.4-19z
Impacts to Biological Resources

INTENTIONALLY LEFT BLANK