

SOURCE: NAIP 2016; Hunsaker 2017; USFWS 2016

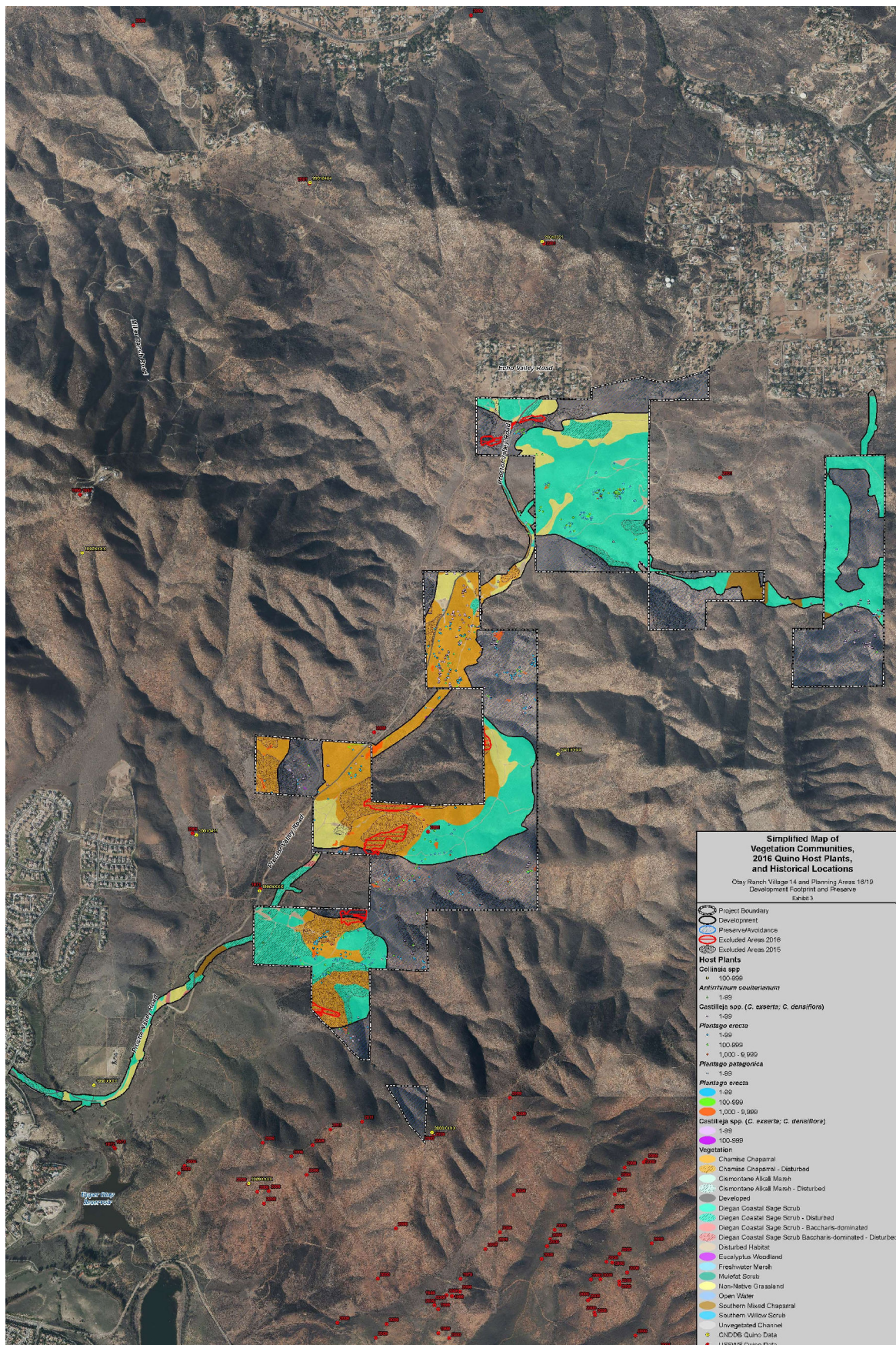
FIGURE 2.4-11  
Critical Habitat

Otay Ranch Village 14 and Planning Areas 16/19



INTENTIONALLY LEFT BLANK





SOURCE: Helix 2017

FIGURE 2.4-12

**DUDEK**

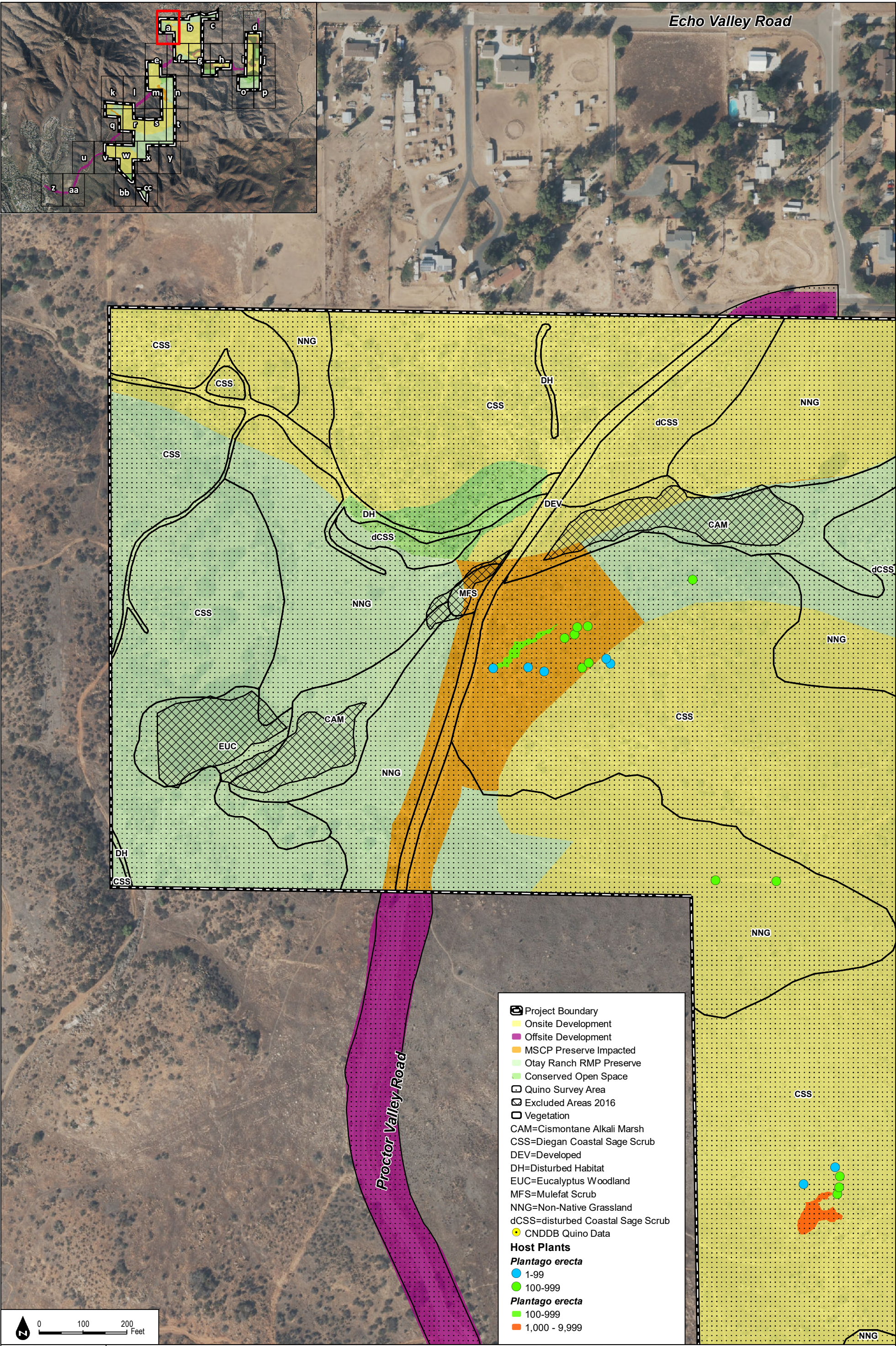
Simplified Map of Vegetation Communities, 2016 Quino Host Plant, and Historical Locations

Otay Ranch Village 14 and Planning Areas 16/19



INTENTIONALLY LEFT BLANK





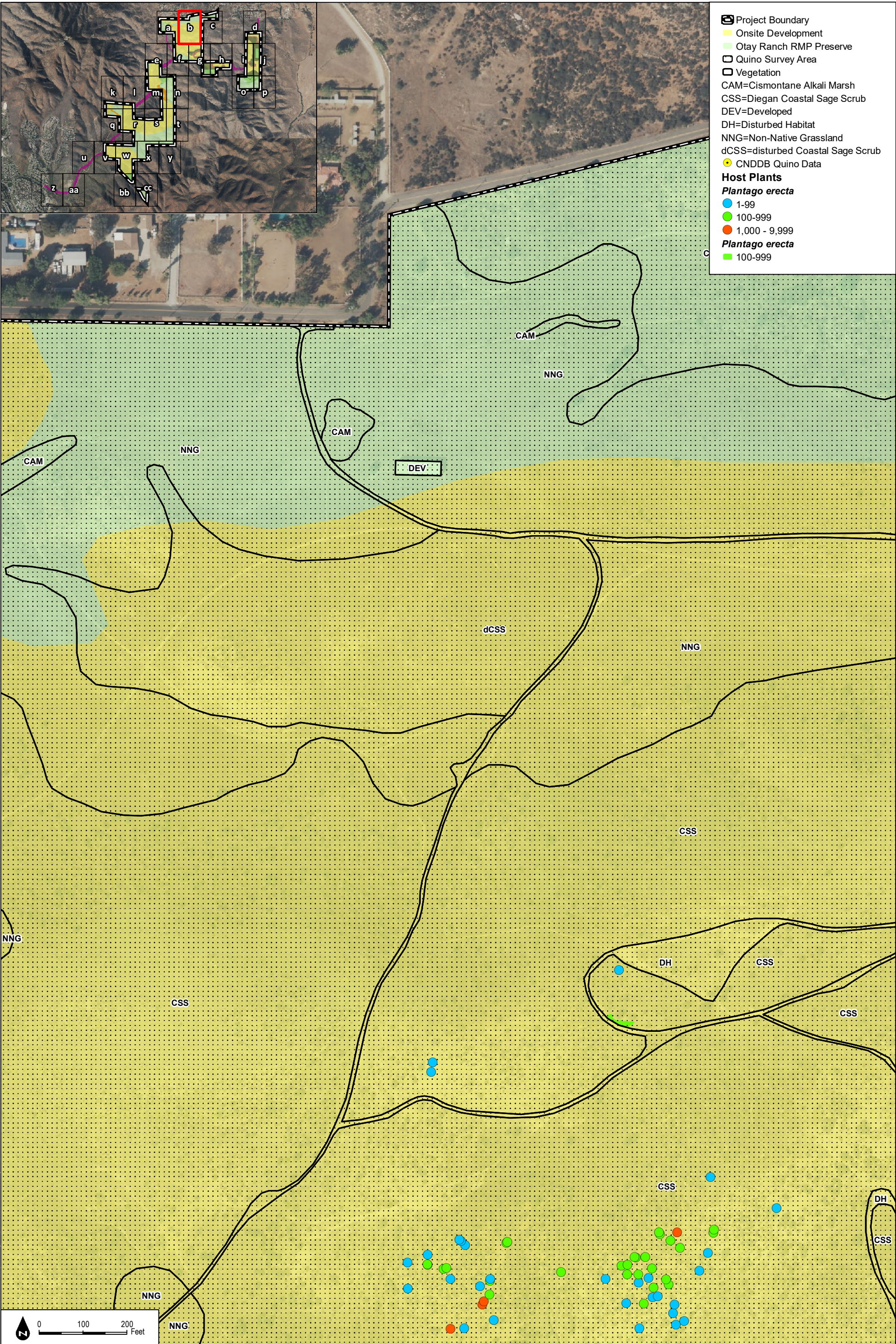
SOURCE: NAIP 2016, Hunsacker 2017, HELIX 2016

Figure 2.4-12a  
2016 Quino Host Plant Mapping and Historical Locations



INTENTIONALLY LEFT BLANK





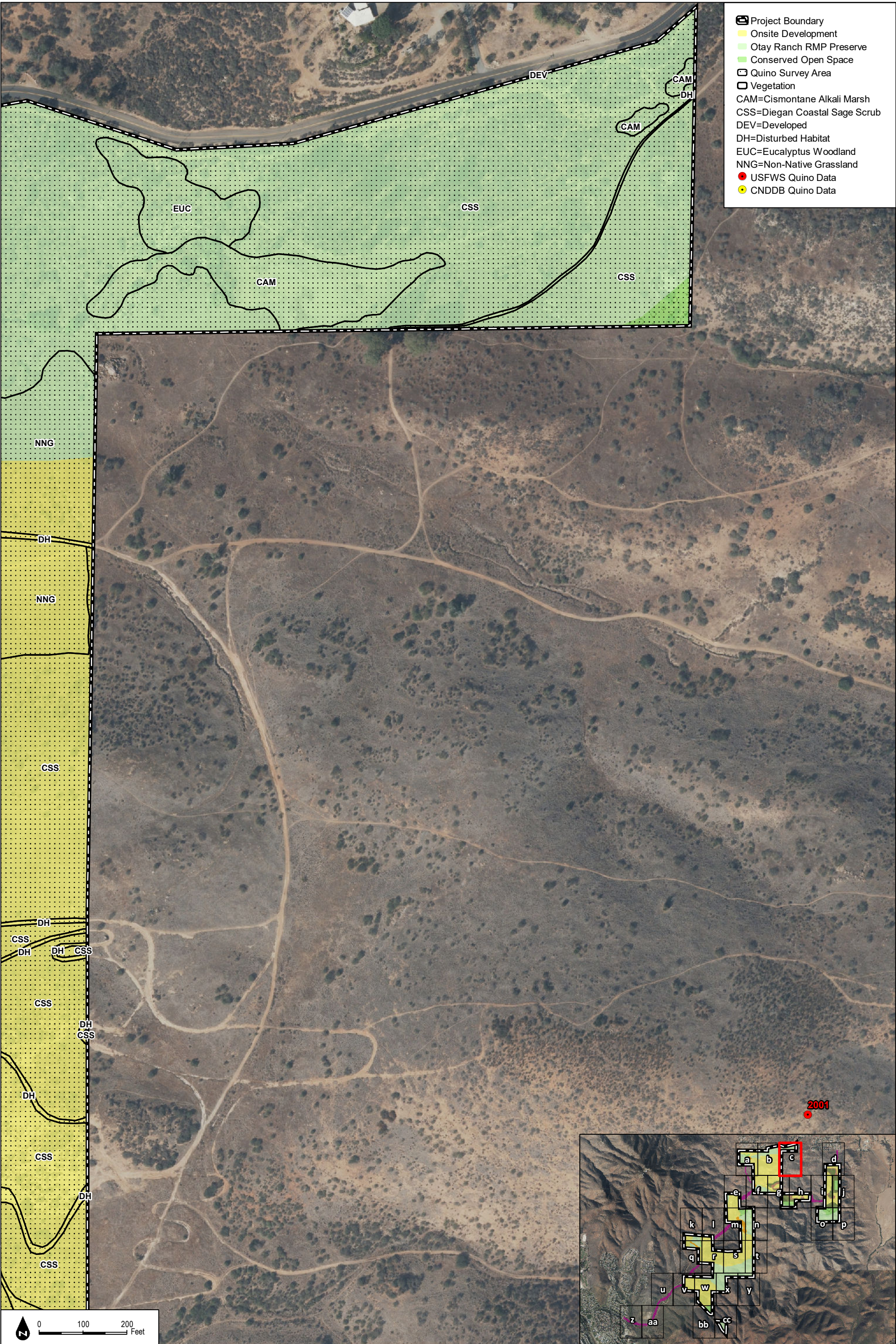
SOURCE: NAIP 2016, Hunsacker 2017, HELIX 2016

**Figure 2.4-12b**  
2016 Quino Host Plant Mapping and Historical Locations



INTENTIONALLY LEFT BLANK





SOURCE: NAIP 2016, Hunsacker 2017, HELIX 2016

DUDEK

Otay Ranch Village 14 and Planning Areas 16/19

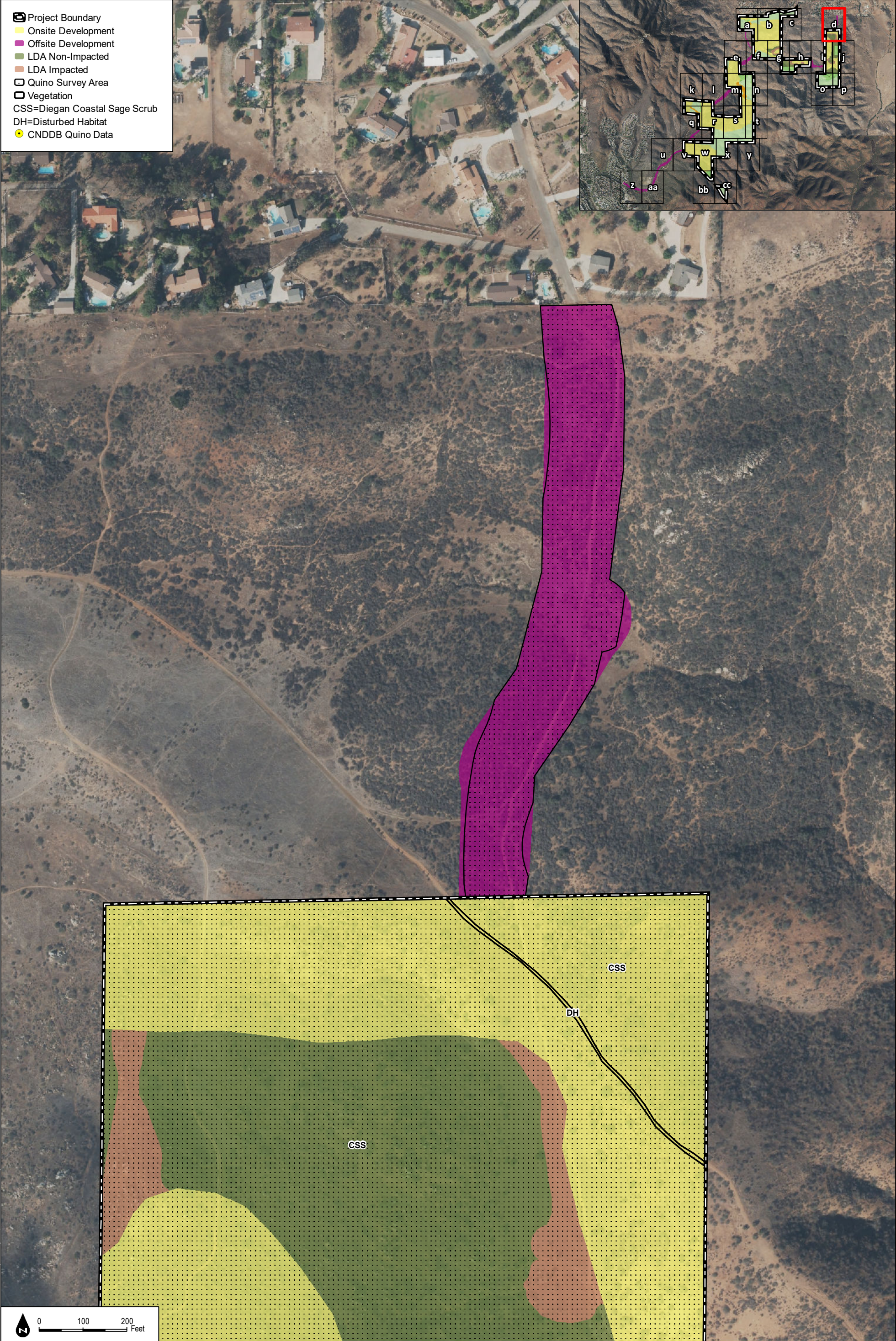
**Figure 2.4-12c**  
2016 Quino Host Plant Mapping and Historical Locations



INTENTIONALLY LEFT BLANK



- Project Boundary
- Onsite Development
- Offsite Development
- LDA Non-Impacted
- LDA Impacted
- Quino Survey Area
- Vegetation
- CSS=Diegan Coastal Sage Scrub
- DH=Disturbed Habitat
- CNDDDB Quino Data



0 100 200 Feet

DUDEK

SOURCE: NAIP 2016, Hunsacker 2017, HELIX 2016

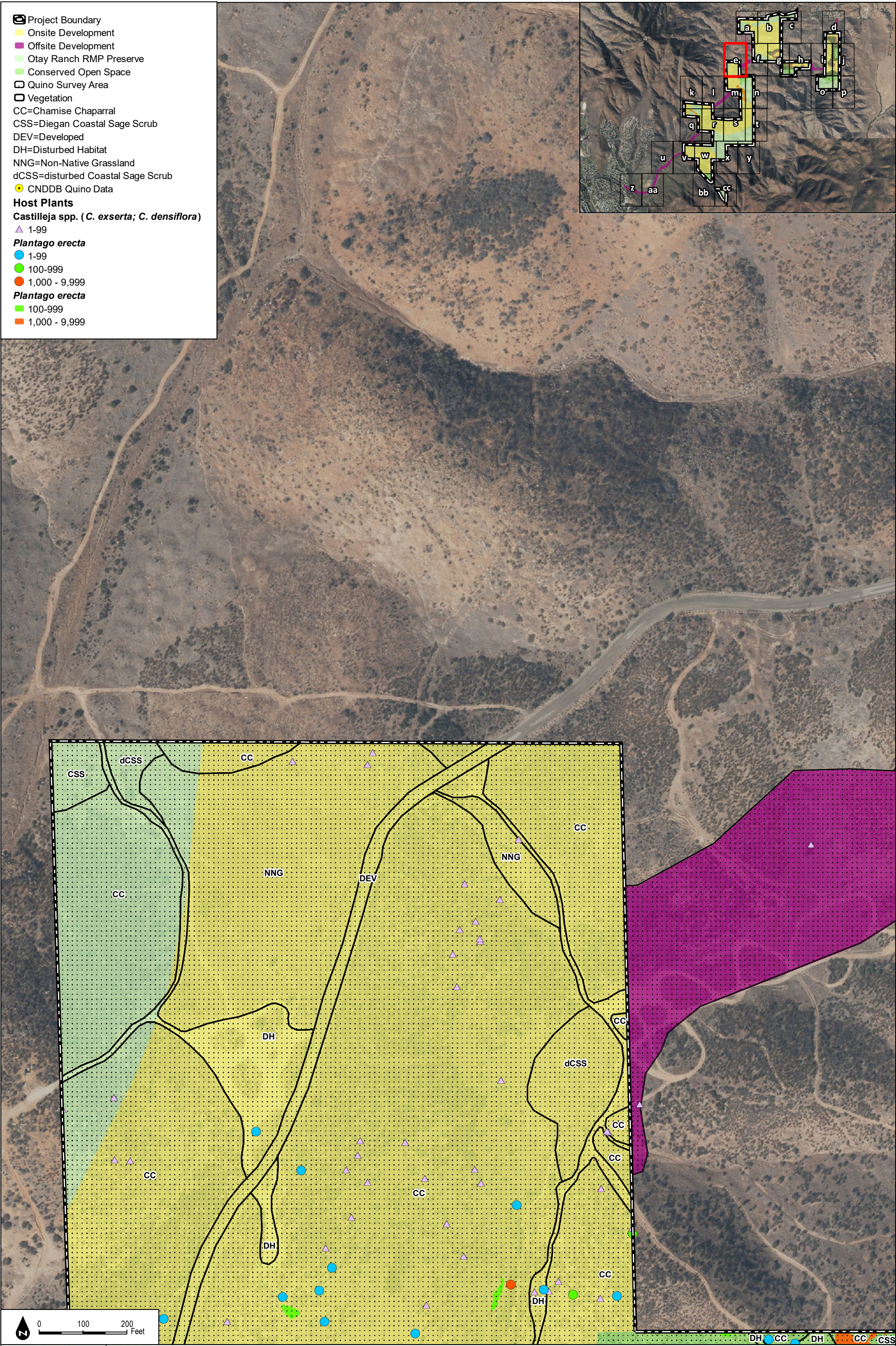
Otay Ranch Village 14 and Planning Areas 16/19

Figure 2.4-12d  
2016 Quino Host Plant Mapping and Historical Locations



INTENTIONALLY LEFT BLANK







INTENTIONALLY LEFT BLANK