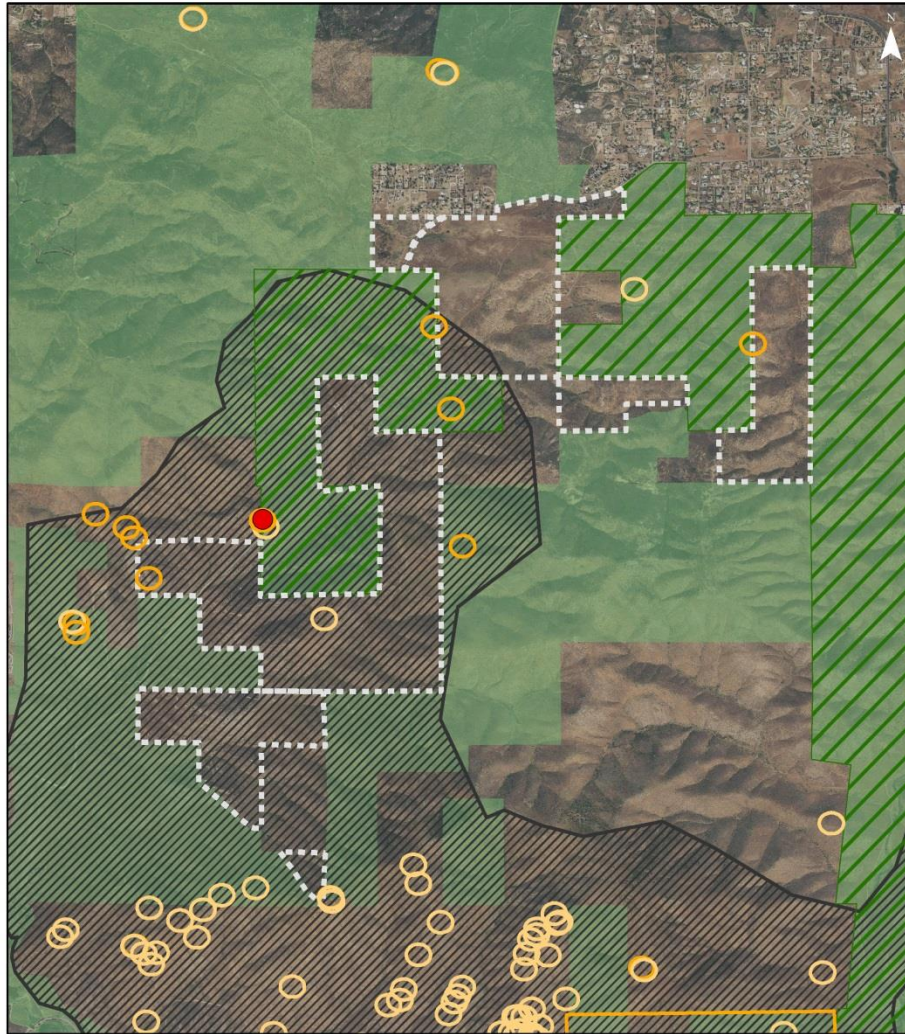


A-3.7 CALIFORNIA FISH AND WILDLIFE ATTACHMENT 7

Comment Letter A-3.7

Attachment 7
Quino Checkerspot Locations,
Proctor Valley

↓
A-3.7-1



Quino Checkerspot Locations Proctor Valley

Quino Observations		Boundaries	
●	2018 CDFW		USFWS Quino Critical Habitat
	2017		Village 14 Plan Boundary
	1998-2016		CDFW Boundary
			Conserved Lands

Quino Data Sources: Occurrence Information for Multiple Species within Jurisdiction of the Carlsbad Fish and Wildlife Office (CFWO); CNDDDB version 04/2018; and CDFW observations. Please Note: The size of a quino observation may reflect the accuracy of a single point or the extent of a specific or non-specific area. For more information on a particular observation please see CNDDDB or the CFWO database. There may be additional occurrences or additional species within this area which have not yet been surveyed and/or mapped. Lack of information about a species or an area can never be used as proof that no special status species occur in an area.
Map Production: CDFW Region 5 April 2018

A-3.7-1
Cont.