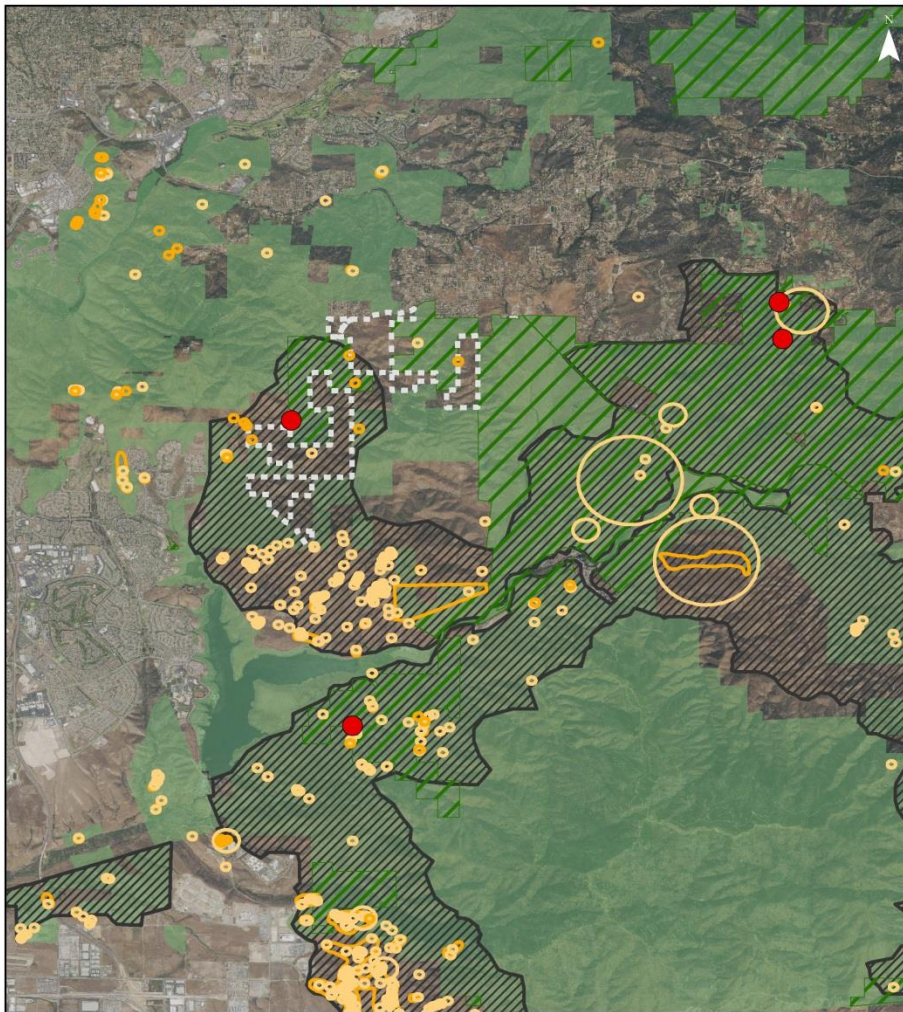


**A-3.8 CALIFORNIA FISH AND WILDLIFE ATTACHMENT 8**

Comment Letter A-3.8

**Attachment 8**  
Regional Quino Checkerspot Locations

↓ A-3.8-1



Regional Quino Checkerspot Locations

0 1 2 4 Miles

Quino Observations	Boundaries
<span style="color: red;">●</span> 2018 CDFW	USFWS Quino Critical Habitat
2017	Village 14 Plan Boundary
1998-2016	CDFW Boundary
	Conserved Lands

Quino Data Sources: Occurrence Information for Multiple Species within Jurisdiction of the Carlsbad Fish and Wildlife Office (CFWO); CNDDDB version 04/2018; and CDFW observations. Please Note: The size of a quino observation may reflect the accuracy of a single point or the extent of a specific or non-specific area. For more information on a particular observation please see CNDDDB or the CFWO database. There may be additional occurrences or additional species within this area which have not yet been surveyed and/or mapped. Lack of information about a species or an area can never be used as proof that no special status species occur in an area.  
Map Production: CDFW Region 5 April 2018

A-3.8-1  
Cont.