

**DUDEK**

SOURCE: SanGIS 2014, Hunsacker 2017, HELIX 2016

2015 Quino Host Plant Mapping, Potential Resource Areas, and Historical Locations

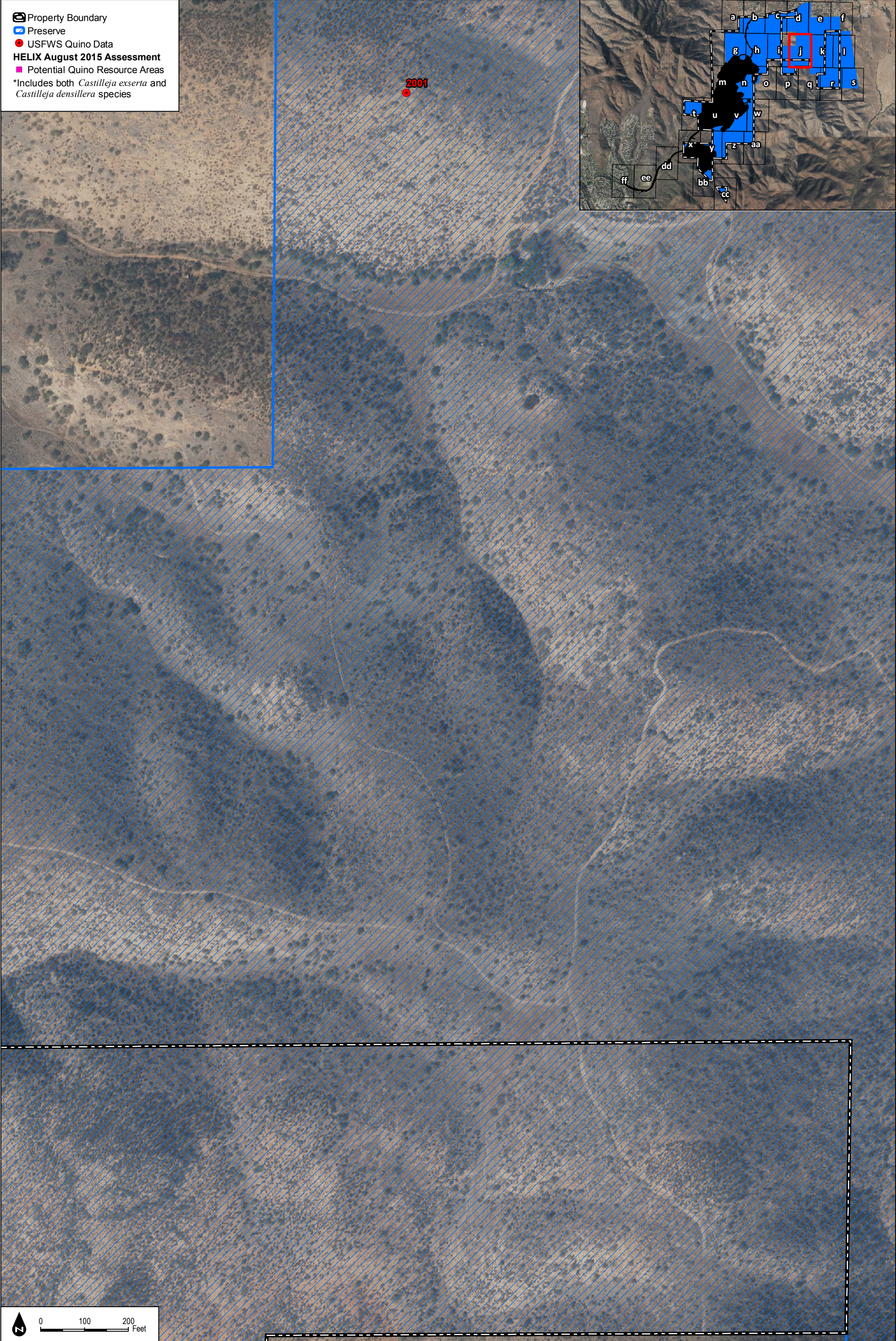
Otay Ranch Village 14 and Planning Area 16/19 - Land Exchange Alternative

**Figure 4-3i**



INTENTIONALLY LEFT BLANK





SOURCE: SanGIS 2014, Hunsacker 2017, HELIX 2016

**DUDEK**

**Figure 4-3j**


2015 Quino Host Plant Mapping, Potential Resource Areas, and Historical Locations


Otay Ranch Village 14 and Planning Area 16/19 - Land Exchange Alternative




INTENTIONALLY LEFT BLANK




Property Boundary

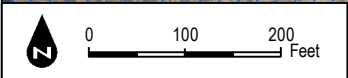
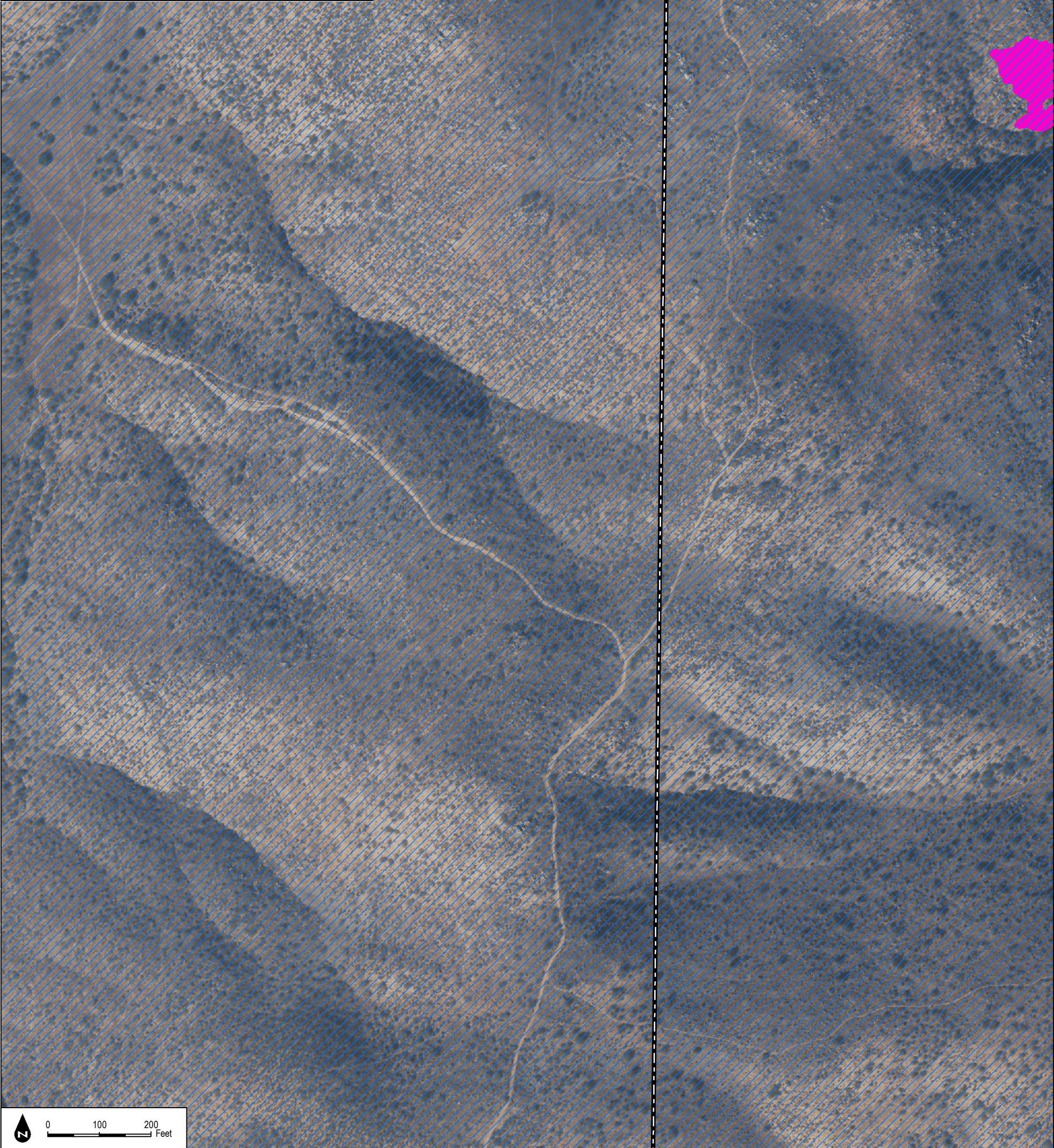
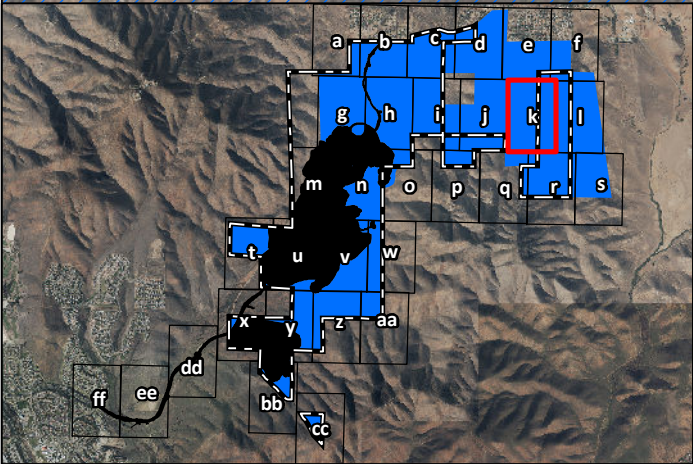
Preserve

**HELIX August 2015 Assessment**

Potential Quino Resource Areas

Potential Quino Resource Area

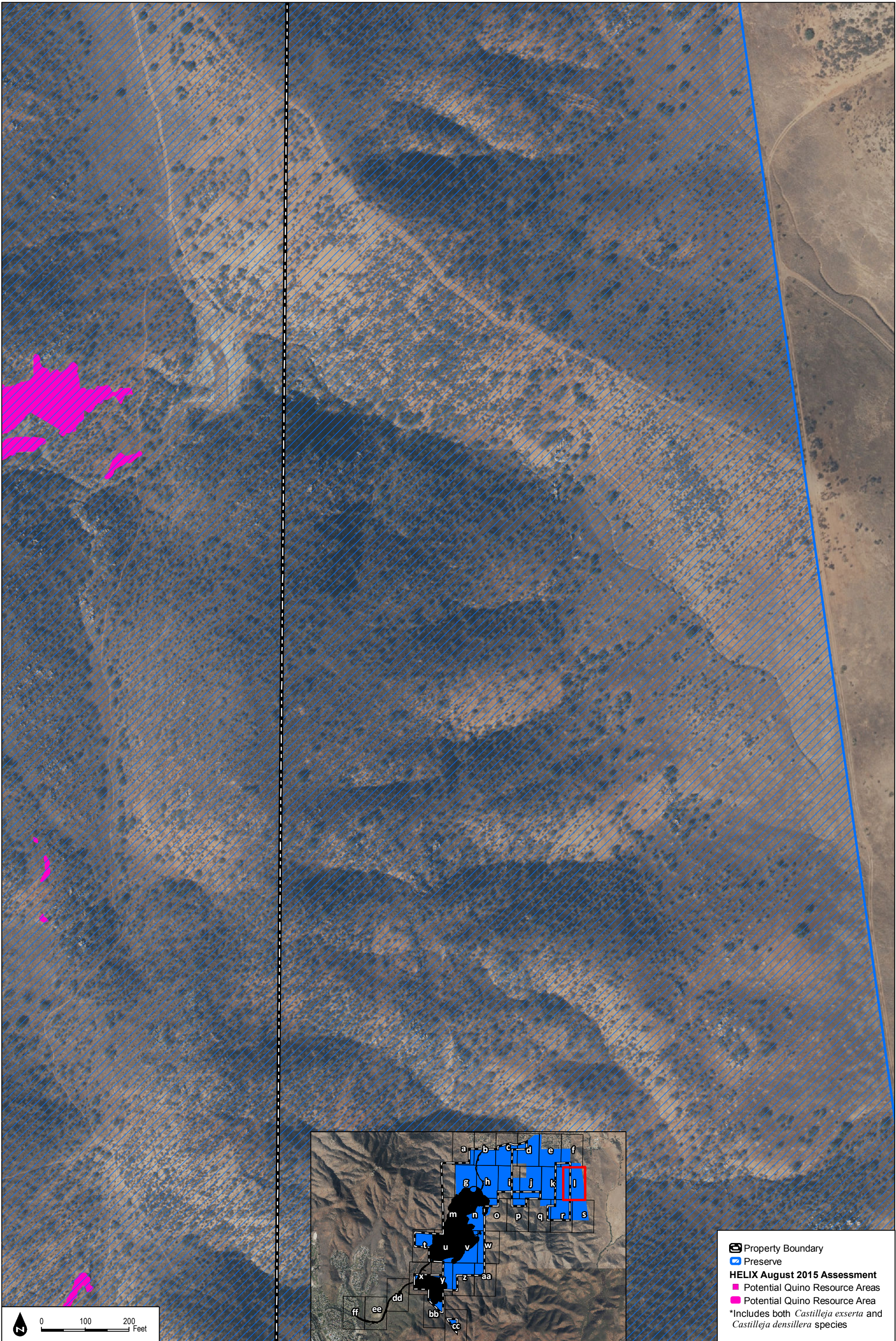
\*Includes both *Castilleja exserta* and *Castilleja densillera* species





INTENTIONALLY LEFT BLANK







INTENTIONALLY LEFT BLANK





0 100 200 Feet

DUDEK

SOURCE: SanGIS 2014, Hunsacker 2017, HELIX 2016

2015 Quino Host Plant Mapping, Potential Resource Areas, and Historical Locations

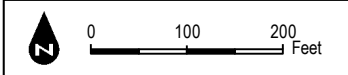
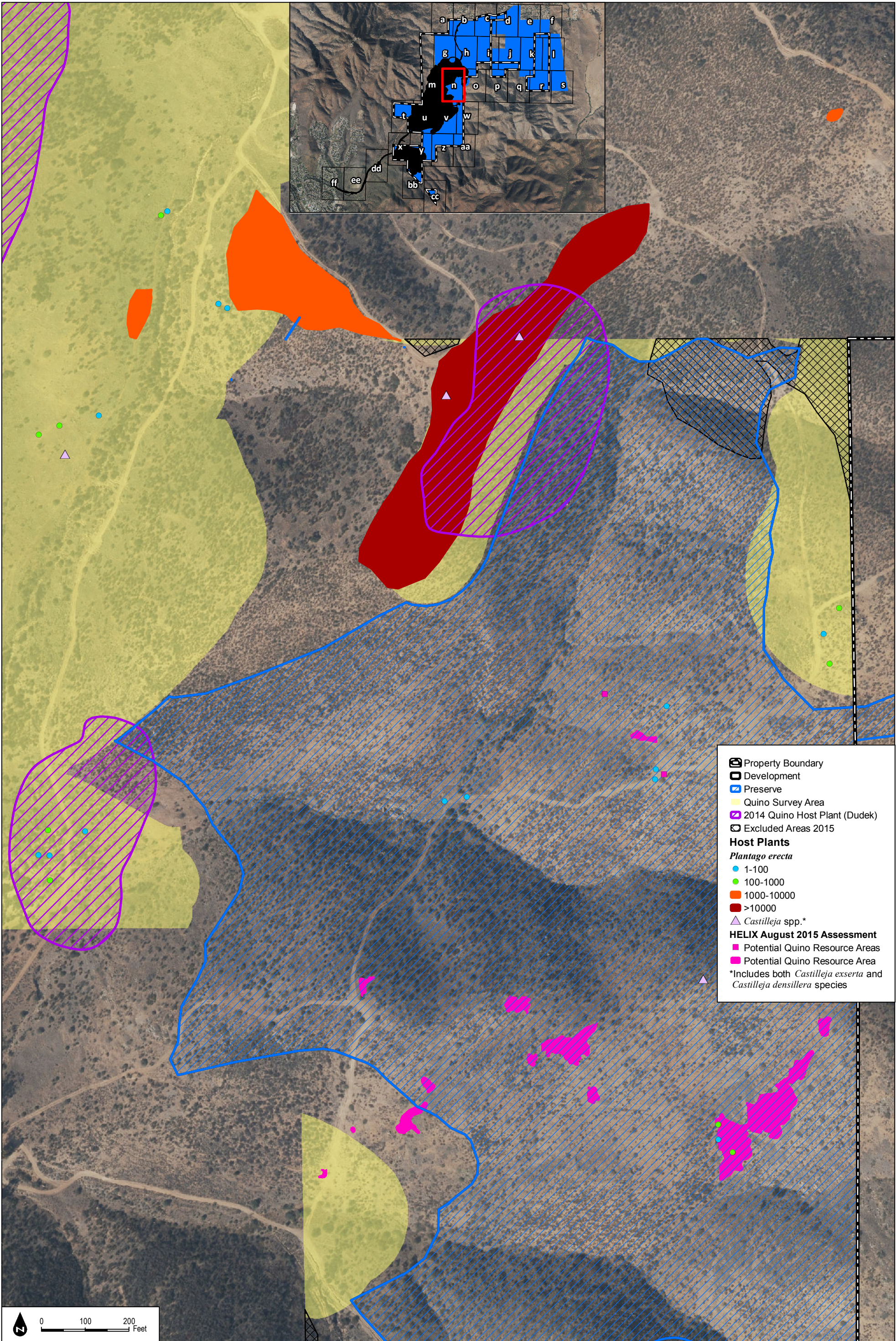
Figure 4-3m

Otay Ranch Village 14 and Planning Area 16/19 - Land Exchange Alternative



INTENTIONALLY LEFT BLANK







INTENTIONALLY LEFT BLANK

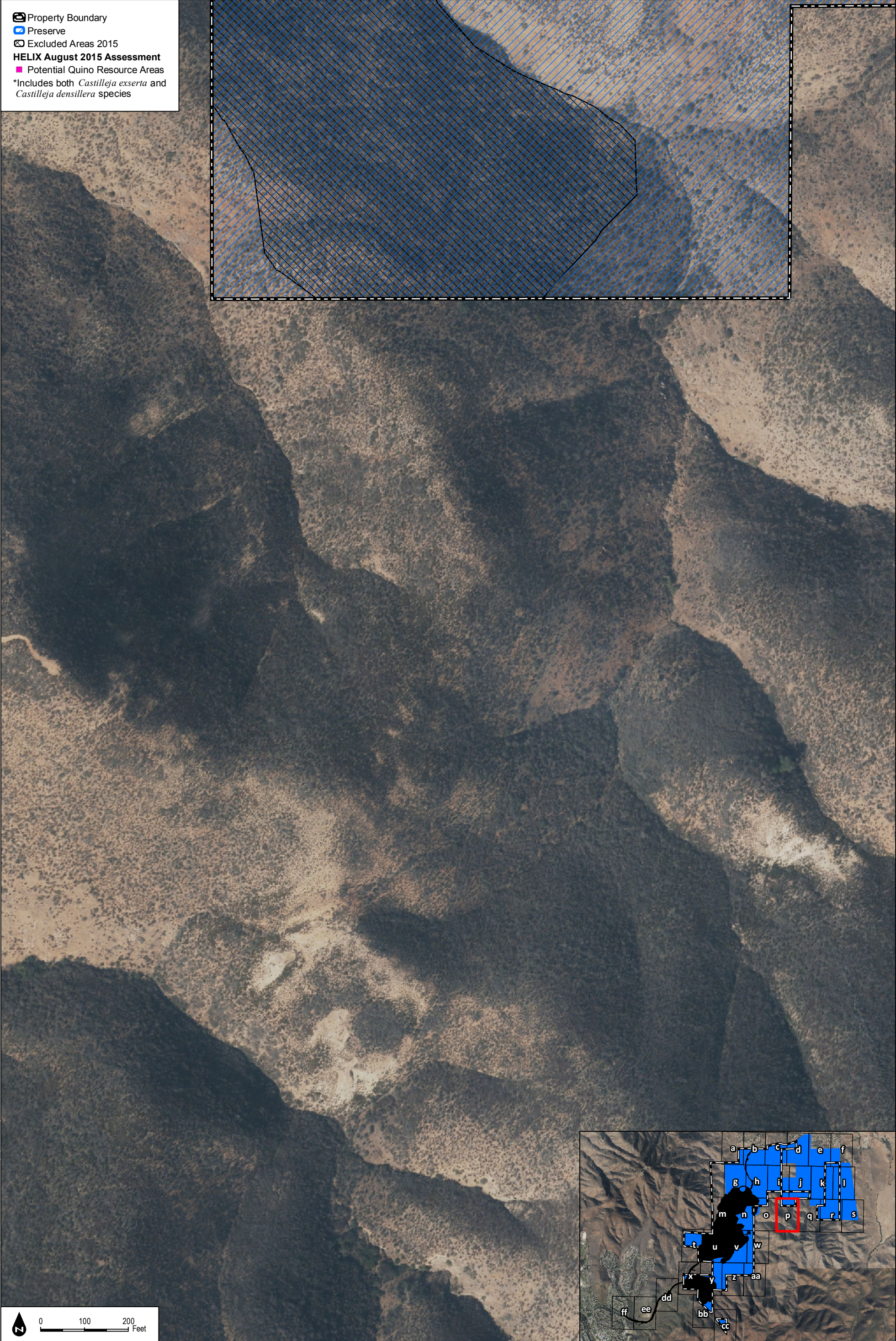






INTENTIONALLY LEFT BLANK

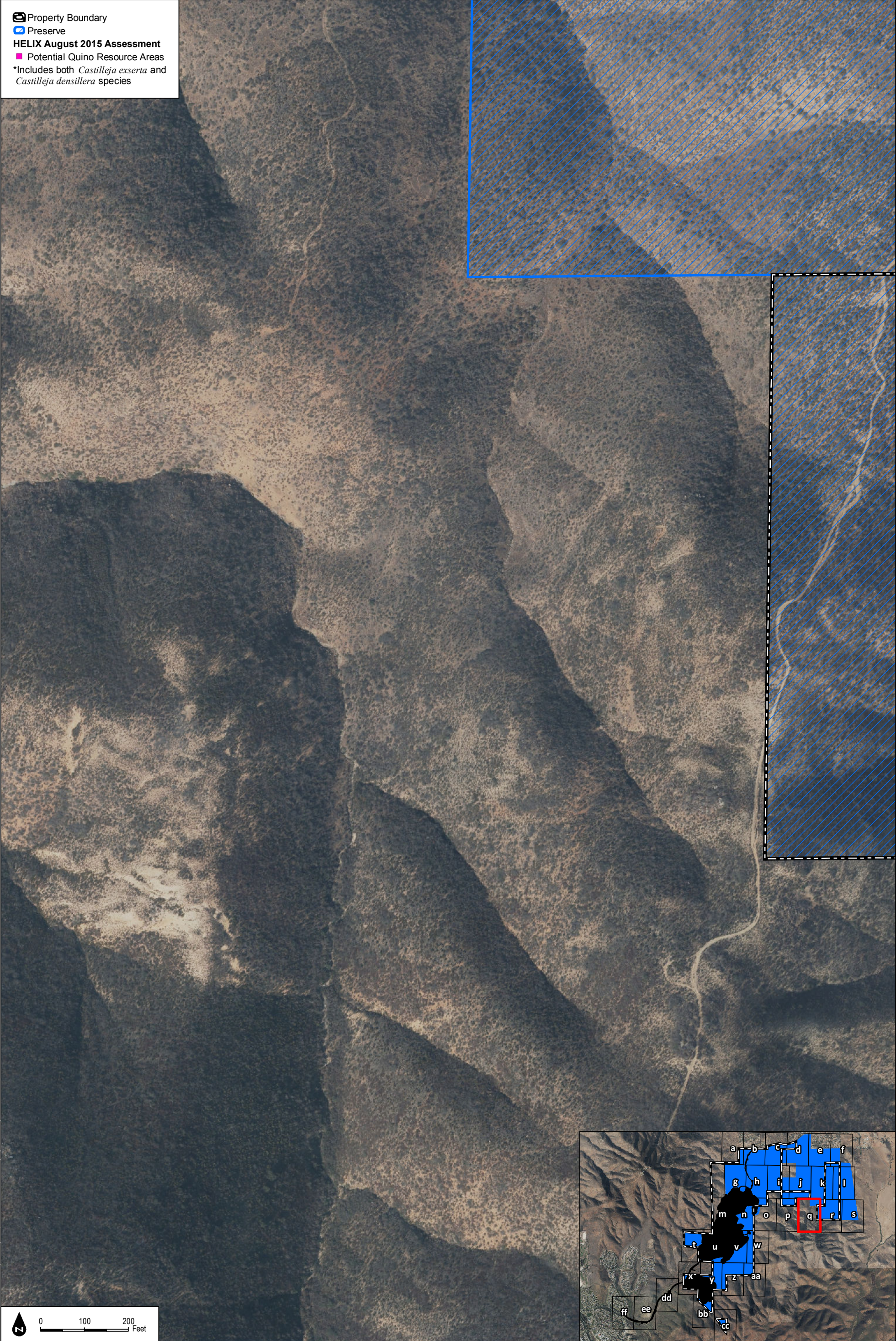






INTENTIONALLY LEFT BLANK

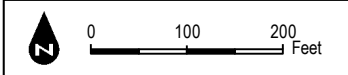






INTENTIONALLY LEFT BLANK



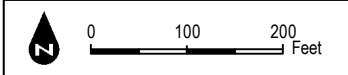
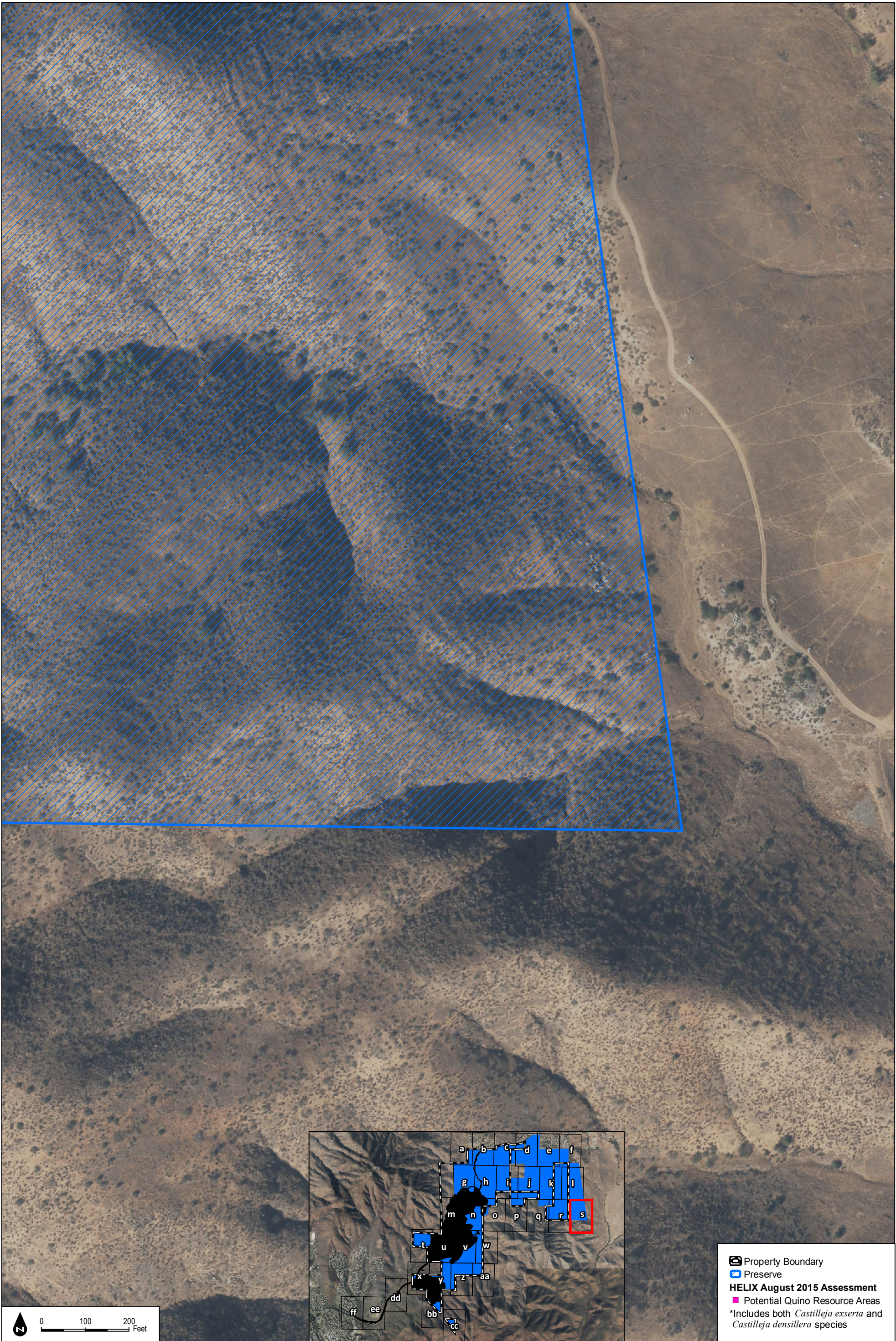


Property Boundary  
Preserve  
**HELIX August 2015 Assessment**  
Potential Quino Resource Areas  
Potential Quino Resource Area  
\*Includes both *Castilleja exserta* and *Castilleja densillera* species



INTENTIONALLY LEFT BLANK

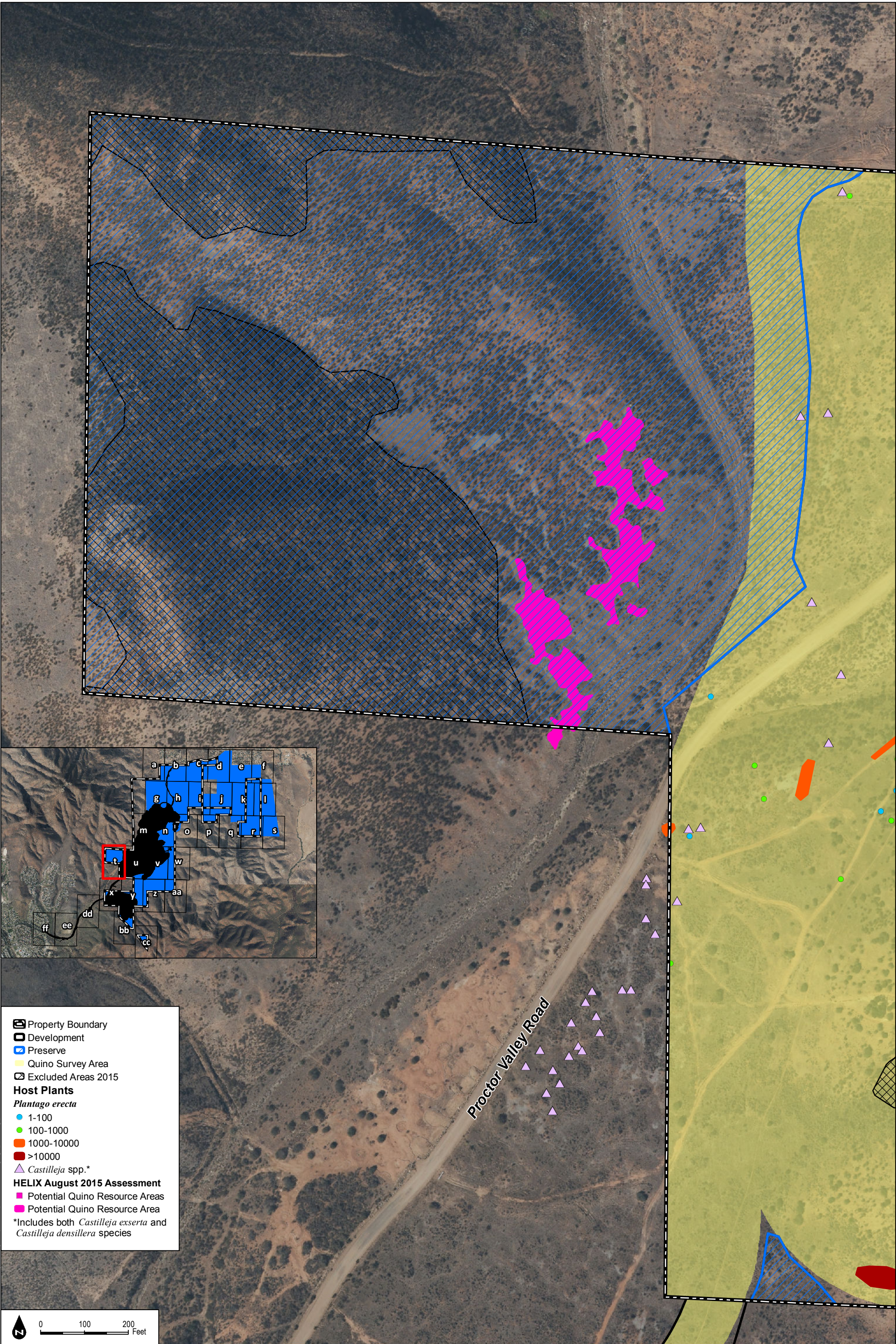






INTENTIONALLY LEFT BLANK





SOURCE: SanGIS 2014, Hunsacker 2017, HELIX 2016

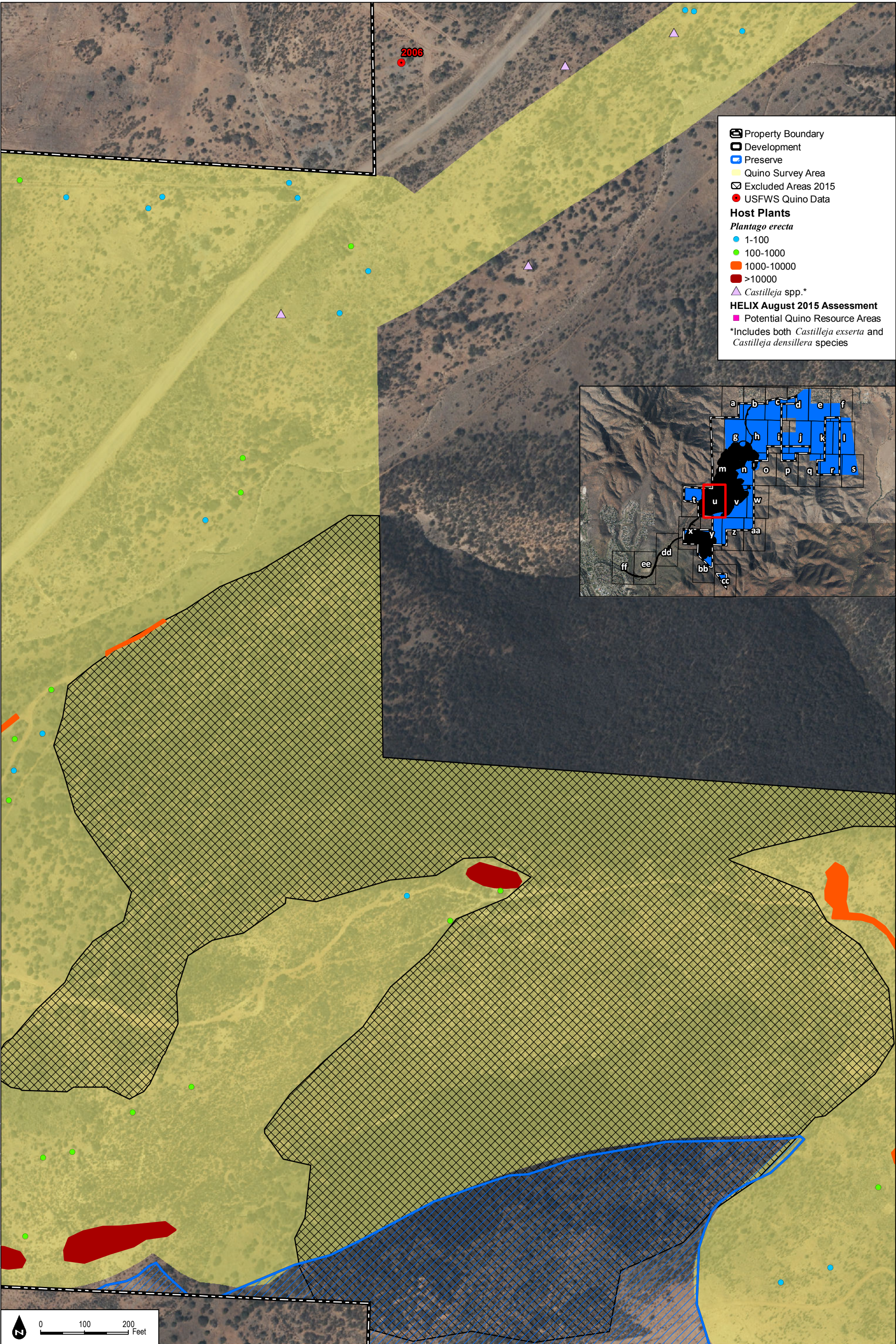
**Figure 4-3t**  
2015 Quino Host Plant Mapping, Potential Resource Areas, and Historical Locations

Otay Ranch Village 14 and Planning Area 16/19 - Land Exchange Alternative



INTENTIONALLY LEFT BLANK





SOURCE: SanGIS 2014, Hunsacker 2017, HELIX 2016

**DUDEK**

**Figure 4-3u**

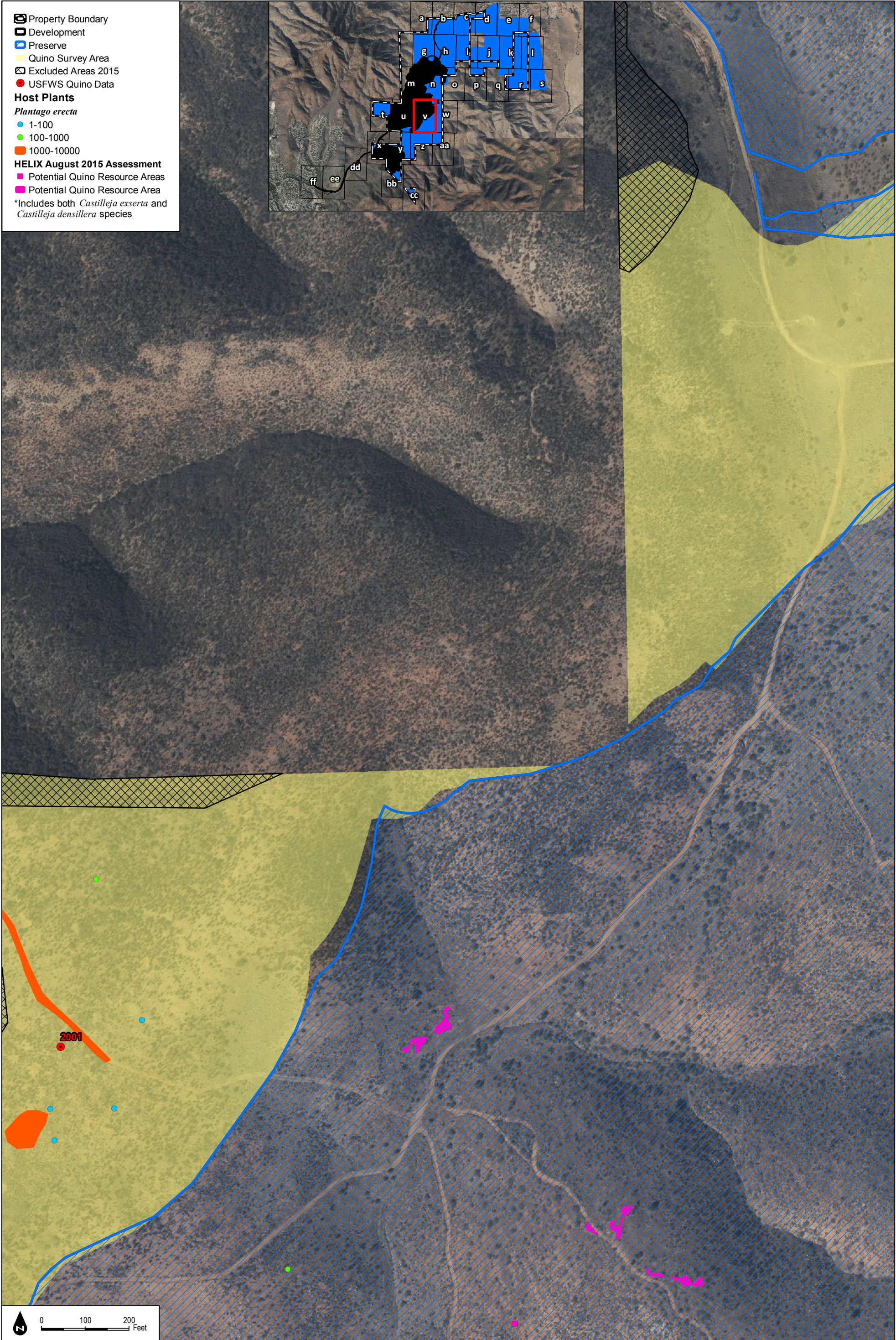
**2015 Quino Host Plant Mapping, Potential Resource Areas, and Historical Locations**

Otay Ranch Village 14 and Planning Area 16/19 - Land Exchange Alternative



INTENTIONALLY LEFT BLANK





SOURCE: SanGIS 2014, Hunsacker 2017, HELIX 2016

**Figure 4-3v**  
2015 Quino Host Plant Mapping, Potential Resource Areas, and Historical Locations

Otay Ranch Village 14 and Planning Area 16/19 - Land Exchange Alternative



INTENTIONALLY LEFT BLANK

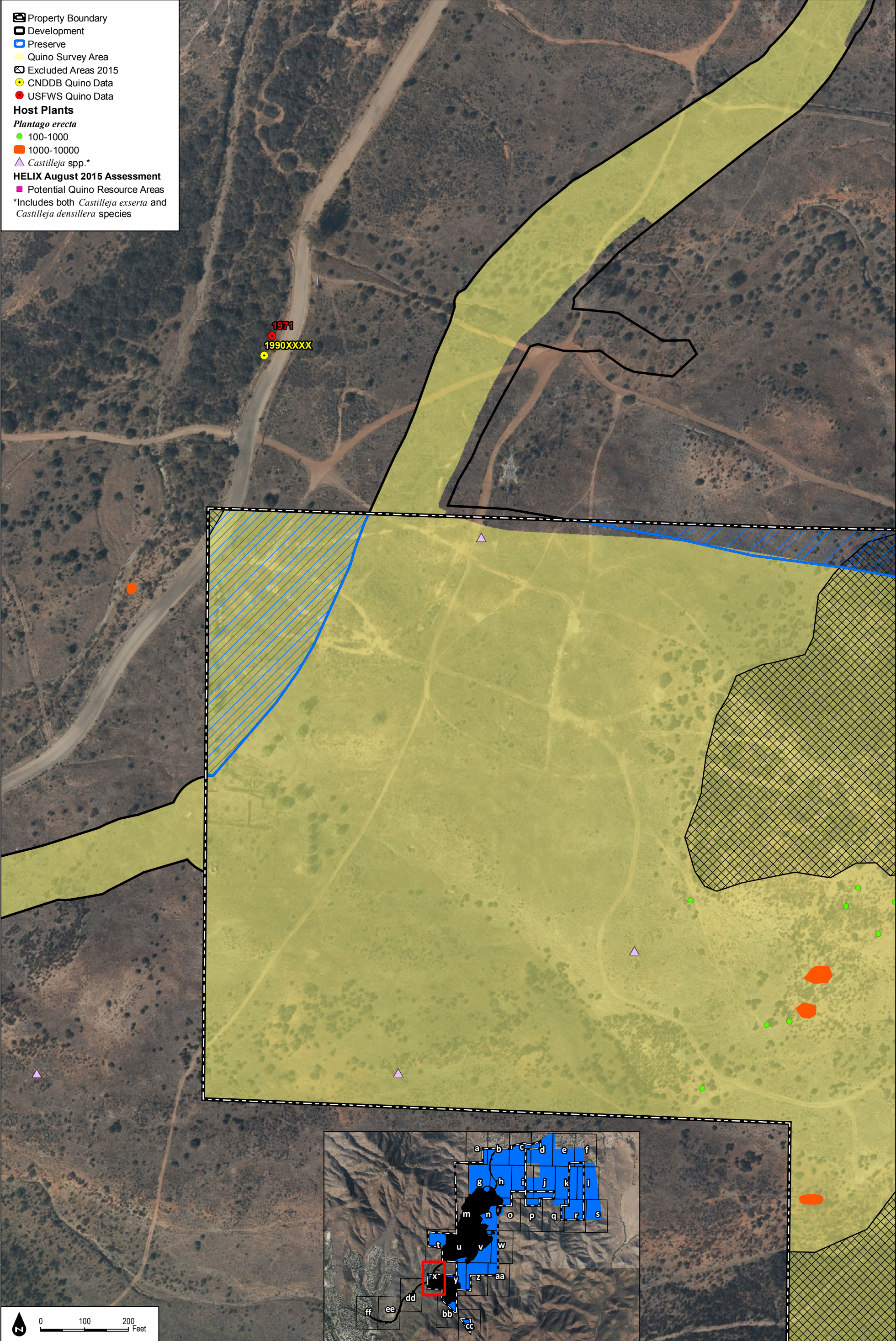






INTENTIONALLY LEFT BLANK





SOURCE: SanGIS 2014, Hunsacker 2017, HELIX 2016

DUDEK

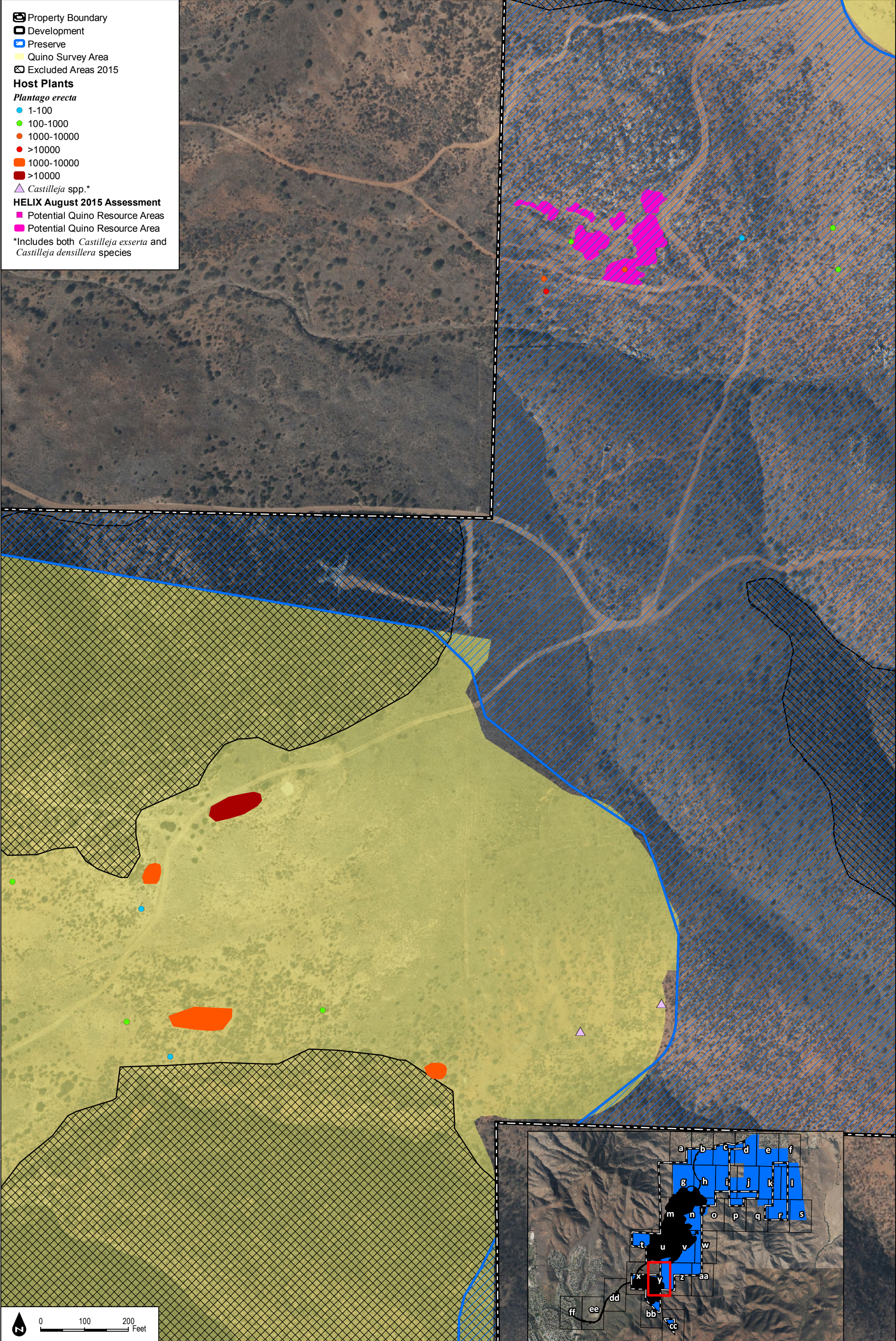
**Figure 4-3x**  
2015 Quino Host Plant Mapping, Potential Resource Areas, and Historical Locations

Otay Ranch Village 14 and Planning Area 16/19 - Land Exchange Alternative



INTENTIONALLY LEFT BLANK





SOURCE: SanGIS 2014, Hunsacker 2017, HELIX 2016

2015 Quino Host Plant Mapping, Potential Resource Areas, and Historical Locations

Otay Ranch Village 14 and Planning Area 16/19 - Land Exchange Alternative



INTENTIONALLY LEFT BLANK





SOURCE: SanGIS 2014, Hunsacker 2017, HELIX 2016

2015 Quino Host Plant Mapping, Potential Resource Areas, and Historical Locations

Figure 4-3z

Otay Ranch Village 14 and Planning Area 16/19 - Land Exchange Alternative

DUDEK



INTENTIONALLY LEFT BLANK





SOURCE: SanGIS 2014, Hunsacker 2017, HELIX 2016

DUDEK

2015 Quino Host Plant Mapping, Potential Resource Areas, and Historical Locations

Otay Ranch Village 14 and Planning Area 16/19 - Land Exchange Alternative

Figure 4-3aa



INTENTIONALLY LEFT BLANK