



INTENTIONALLY LEFT BLANK



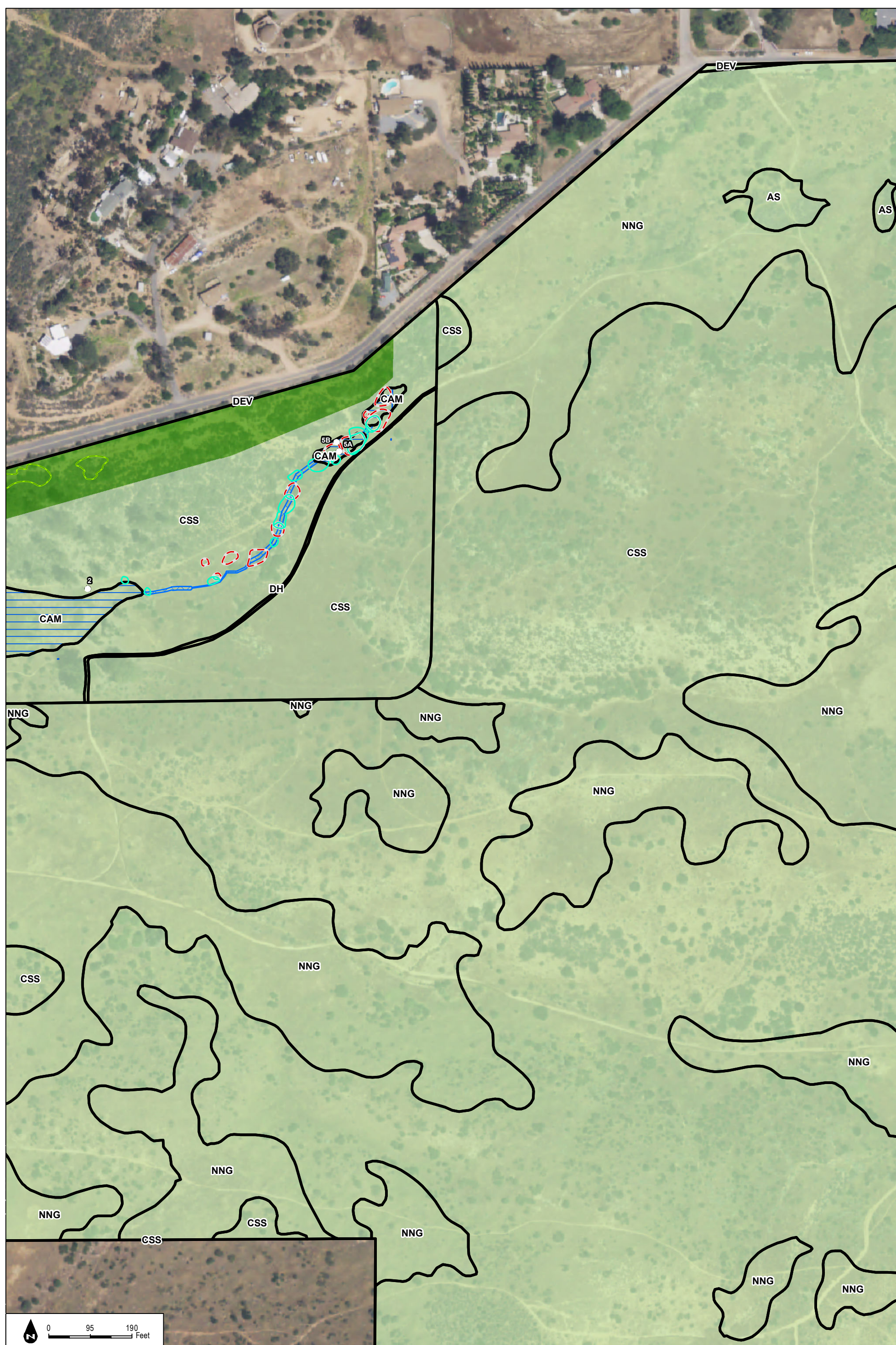


**Figure 5-1c**  
Impacts to Biological Resources



INTENTIONALLY LEFT BLANK





**Figure 5-1d**  
Impacts to Biological Resources

SOURCE: NAIP 2016; Hunsaker 2017

Otay Ranch Village 14 and Planning Area 16/19 - Land Exchange Alternative

DUDEK



INTENTIONALLY LEFT BLANK





**Figure 5-1e**  
Impacts to Biological Resources



INTENTIONALLY LEFT BLANK

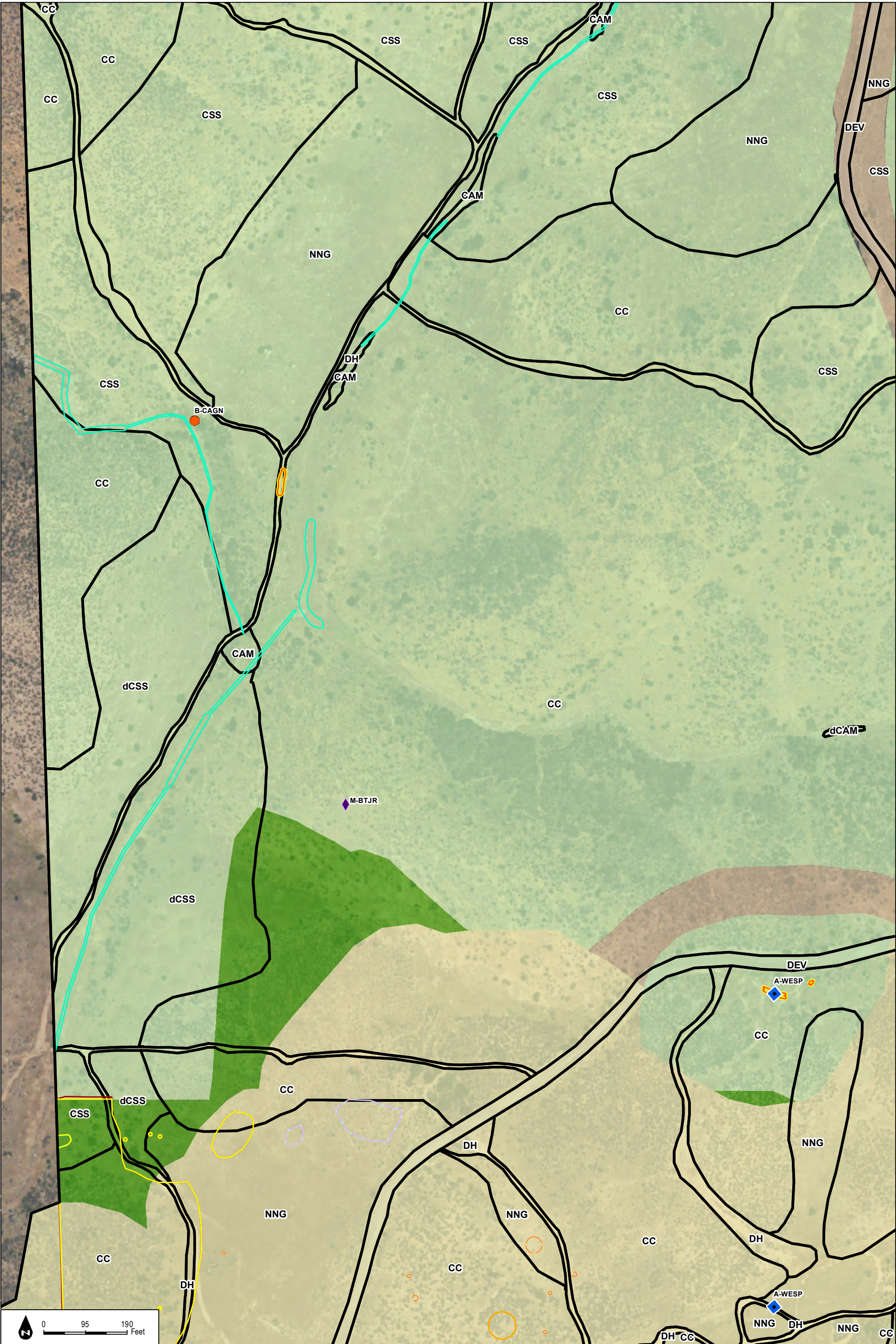






INTENTIONALLY LEFT BLANK





SOURCE: NAIP 2016; Hunsaker 2017

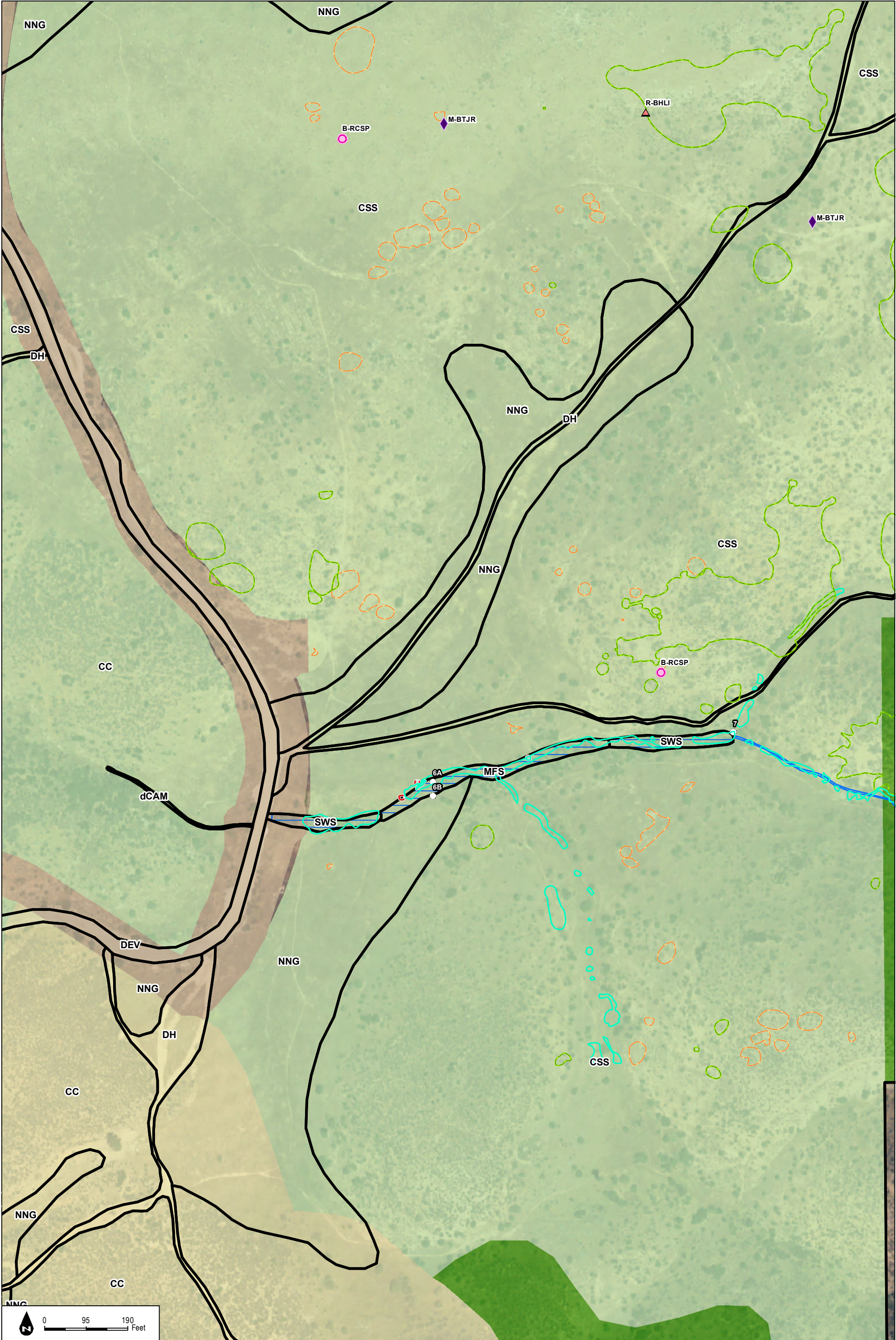
Otay Ranch Village 14 and Planning Area 16/19 - Land Exchange Alternative

**Figure 5-1g**  
Impacts to Biological Resources



INTENTIONALLY LEFT BLANK





**Figure 5-1h**  
Impacts to Biological Resources

SOURCE: NAIP 2016; Hunsaker 2017

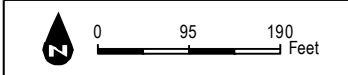
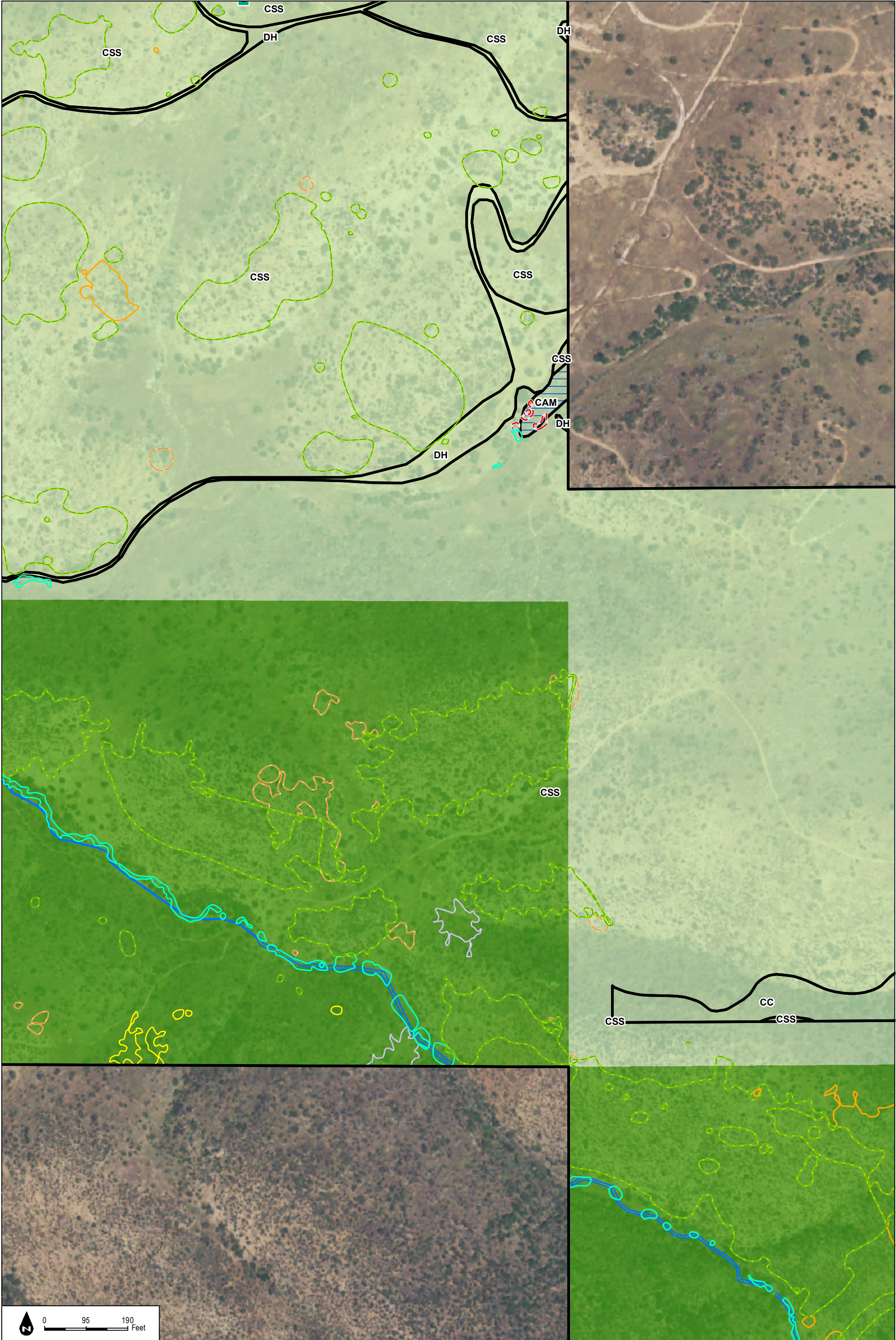
Otay Ranch Village 14 and Planning Area 16/19 - Land Exchange Alternative

**DUDEK**



INTENTIONALLY LEFT BLANK





DUDEK

SOURCE: NAIP 2016; Hunsaker 2017

Otay Ranch Village 14 and Planning Area 16/19 - Land Exchange Alternative

**Figure 5-1i**  
Impacts to Biological Resources



INTENTIONALLY LEFT BLANK





**Figure 5-1j**  
Impacts to Biological Resources

SOURCE: NAIP 2016; Hunsaker 2017

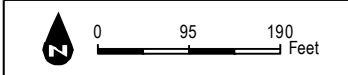
Otay Ranch Village 14 and Planning Area 16/19 - Land Exchange Alternative





INTENTIONALLY LEFT BLANK

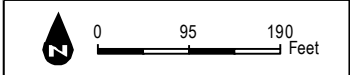






INTENTIONALLY LEFT BLANK

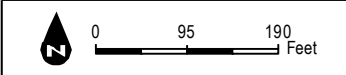
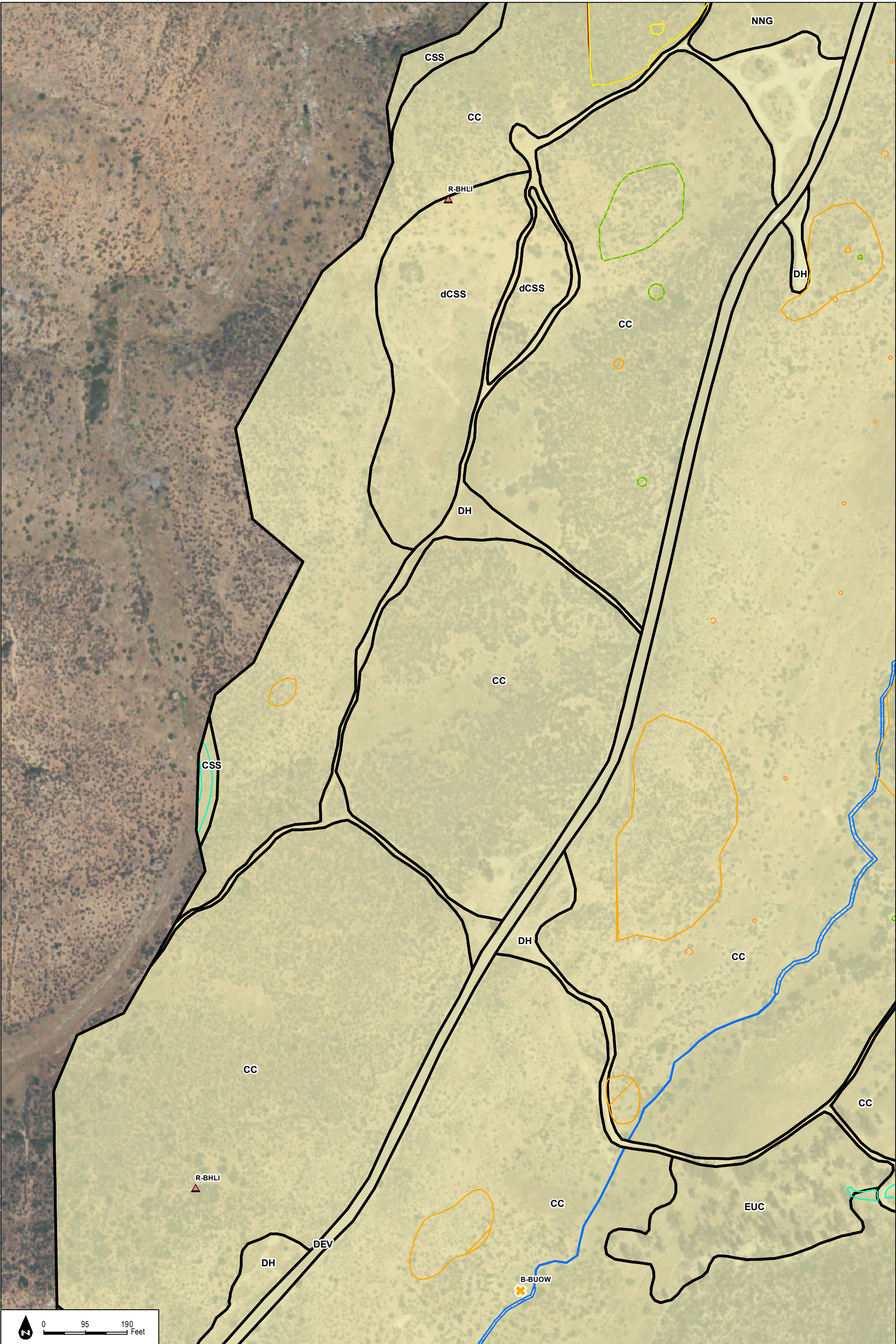






INTENTIONALLY LEFT BLANK

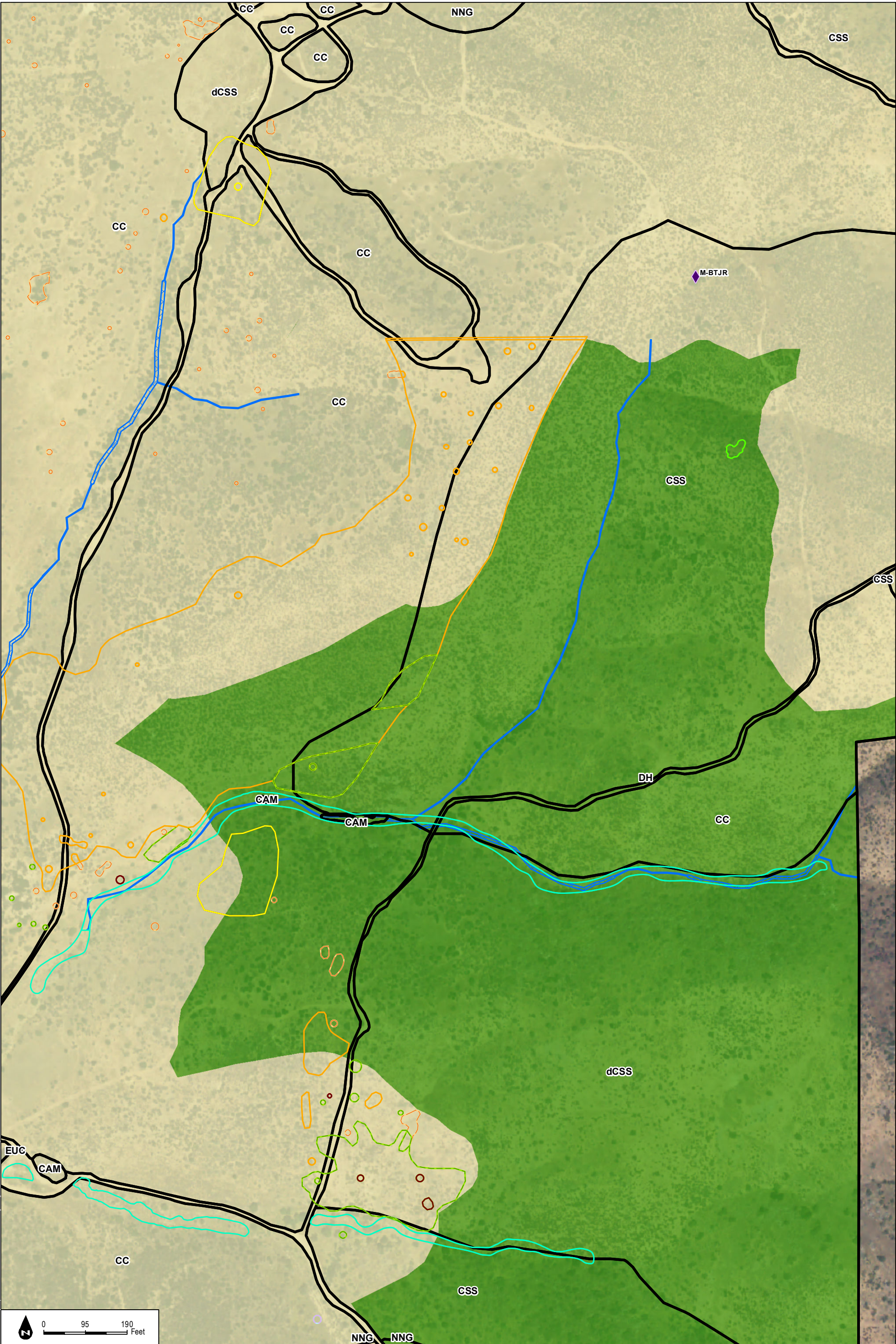






INTENTIONALLY LEFT BLANK





SOURCE: NAIP 2016; Hunsaker 2017

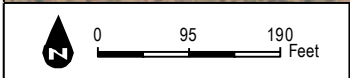
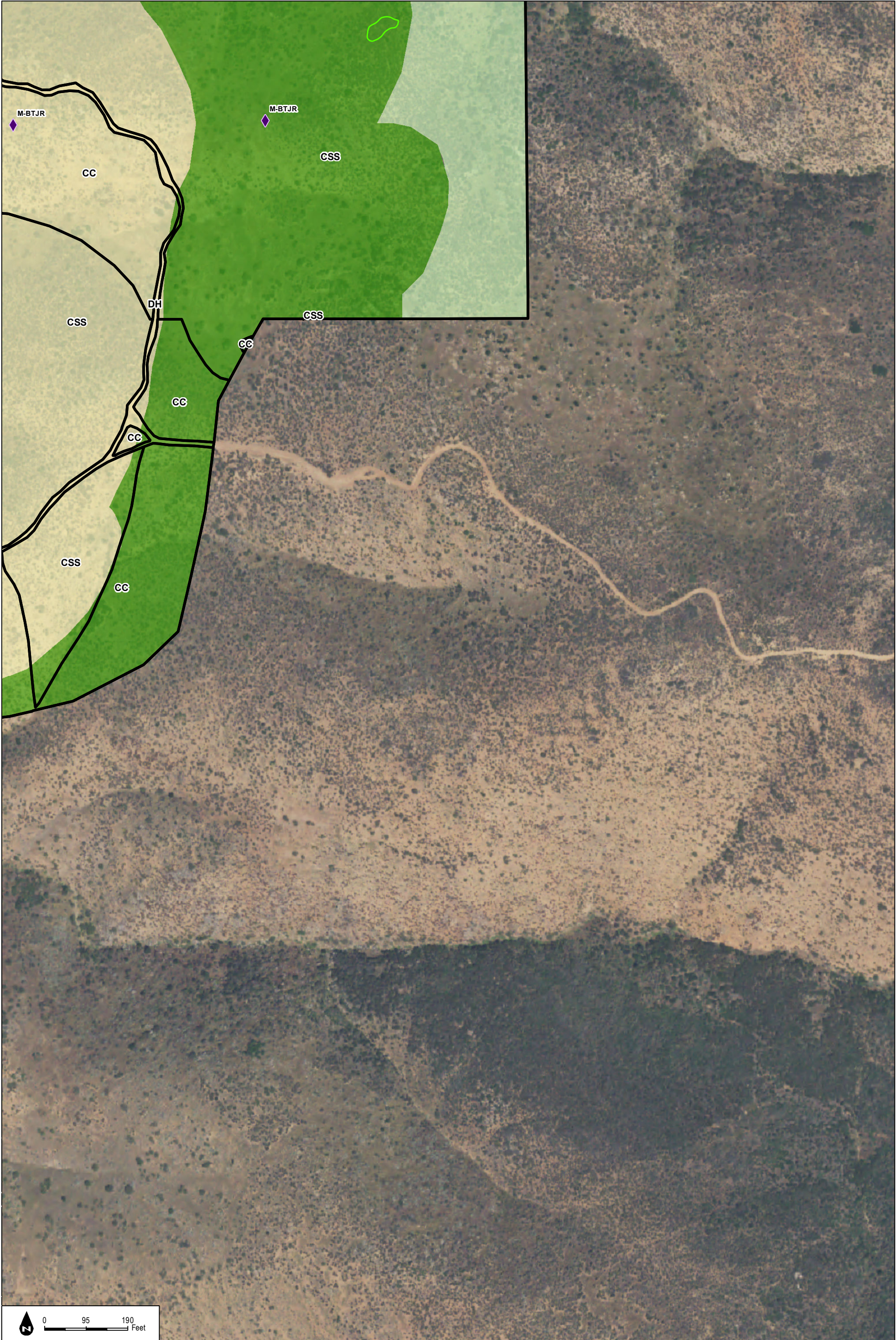
Otay Ranch Village 14 and Planning Area 16/19 - Land Exchange Alternative

**Figure 5-1n**  
Impacts to Biological Resources



INTENTIONALLY LEFT BLANK

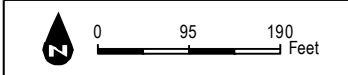






INTENTIONALLY LEFT BLANK





DUDEK

SOURCE: NAIP 2016; Hunsaker 2017

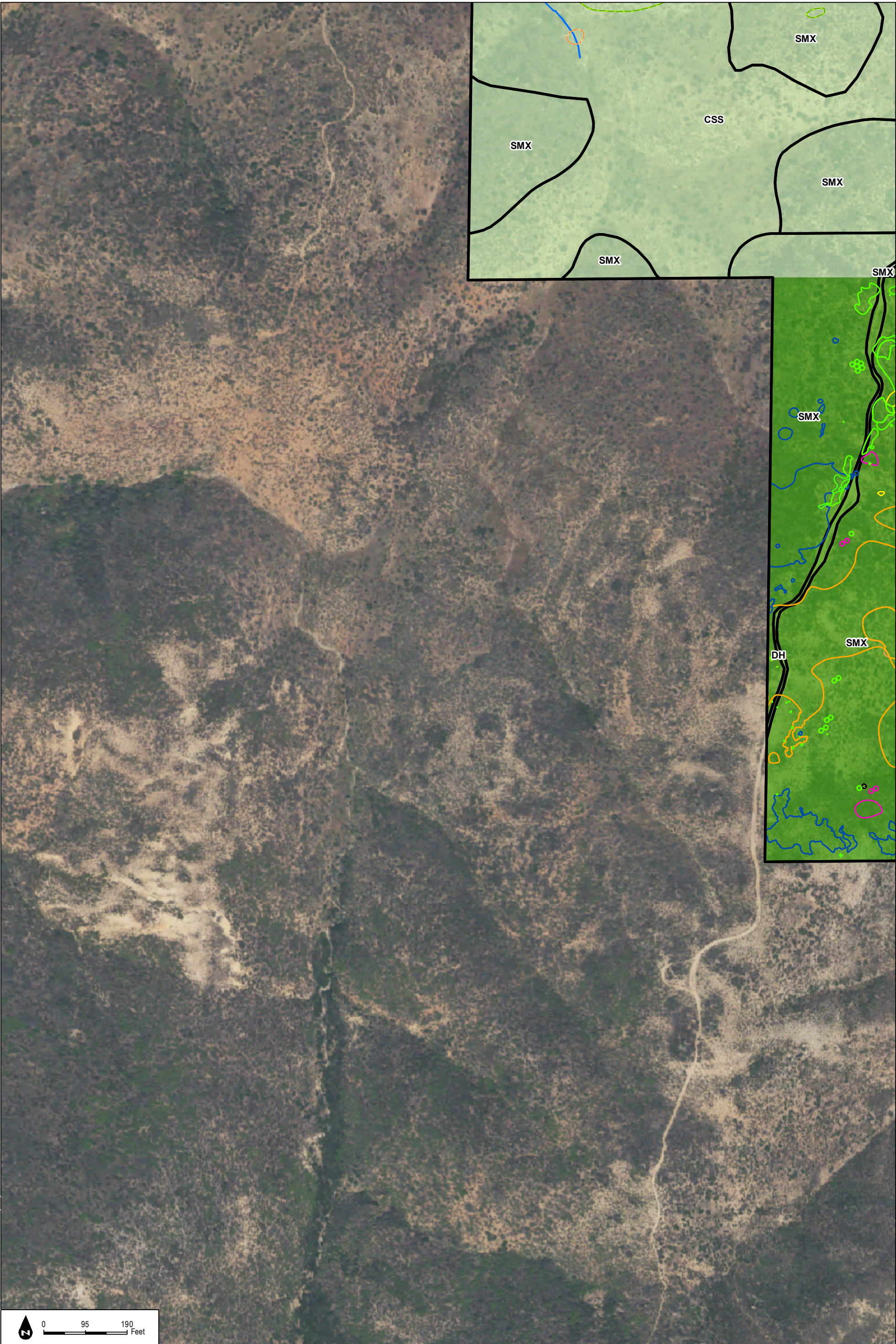
Otay Ranch Village 14 and Planning Area 16/19 - Land Exchange Alternative

**Figure 5-1p**  
Impacts to Biological Resources



INTENTIONALLY LEFT BLANK



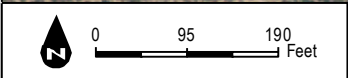
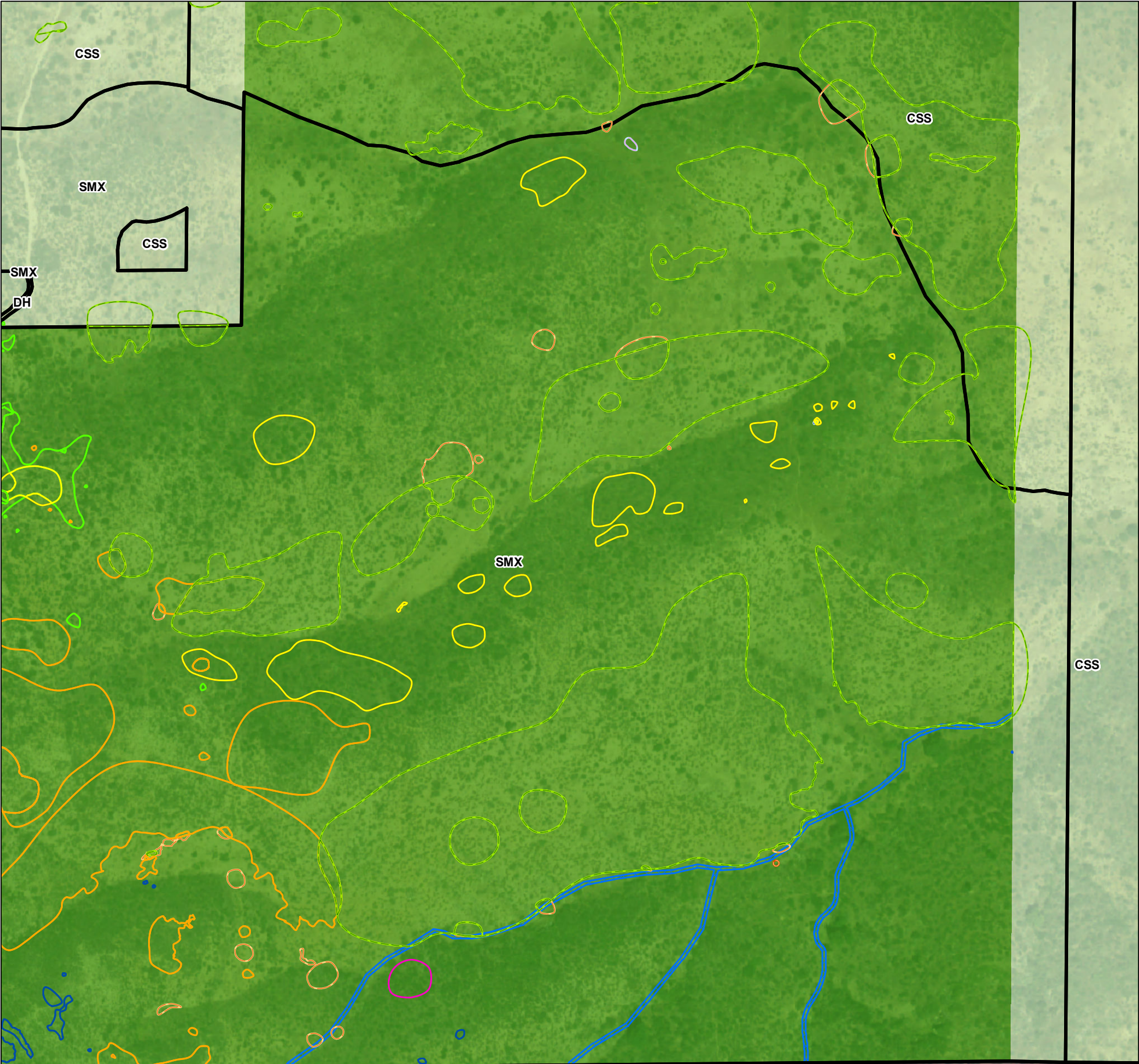


**Figure 5-1q**  
Impacts to Biological Resources



INTENTIONALLY LEFT BLANK

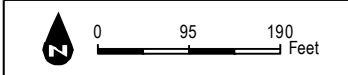
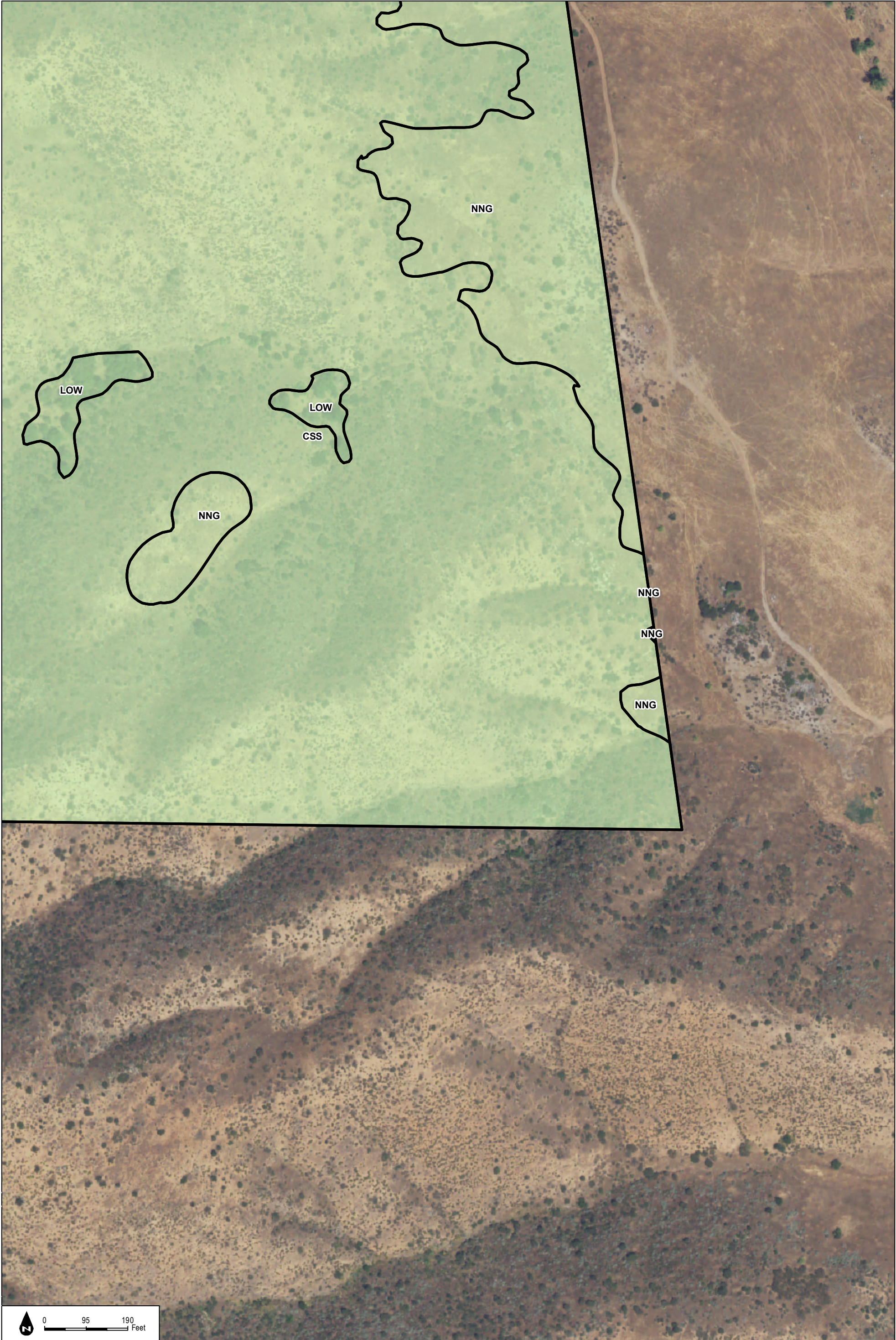






INTENTIONALLY LEFT BLANK

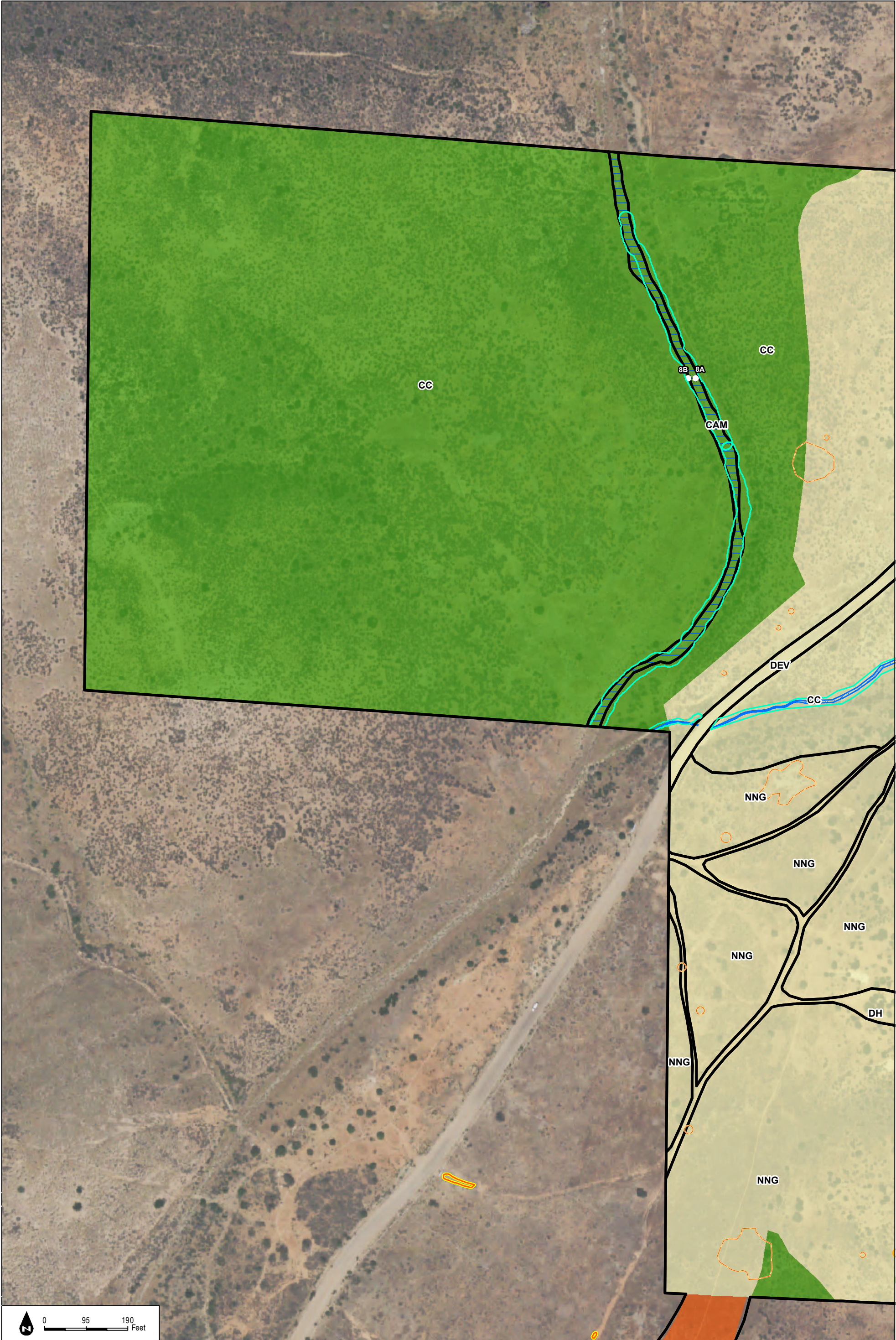






INTENTIONALLY LEFT BLANK



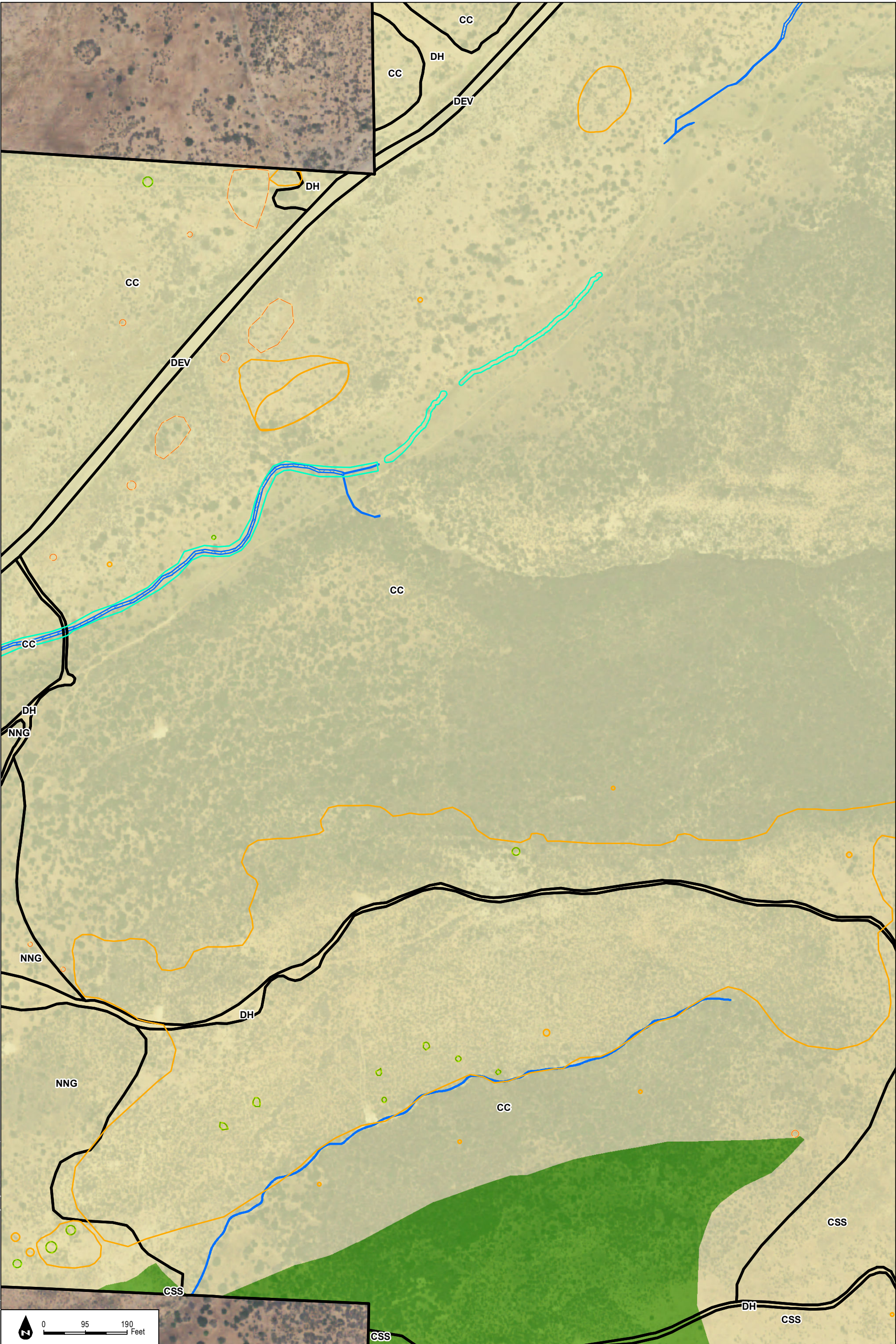


**Figure 5-1t**  
Impacts to Biological Resources



INTENTIONALLY LEFT BLANK





**Figure 5-1u**  
Impacts to Biological Resources

SOURCE: NAIP 2016; Hunsaker 2017

Otay Ranch Village 14 and Planning Area 16/19 - Land Exchange Alternative

**DUDEK**



INTENTIONALLY LEFT BLANK





**Figure 5-1v**  
Impacts to Biological Resources

SOURCE: NAIP 2016; Hunsaker 2017

Otay Ranch Village 14 and Planning Area 16/19 - Land Exchange Alternative

**DUDEK**



INTENTIONALLY LEFT BLANK