

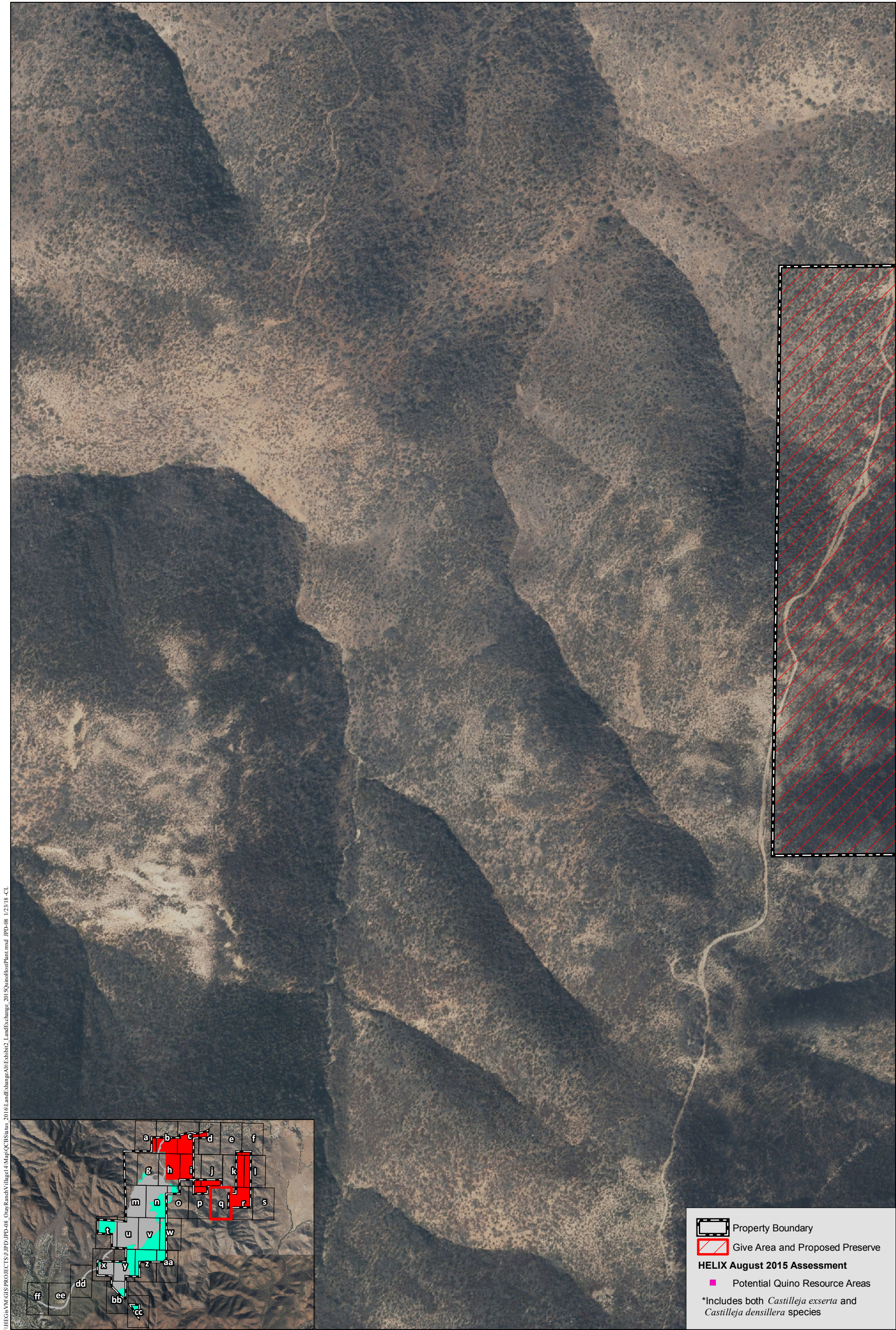
2015 Quino Host Plant Mapping, Potential Resource Areas, and Historical Locations

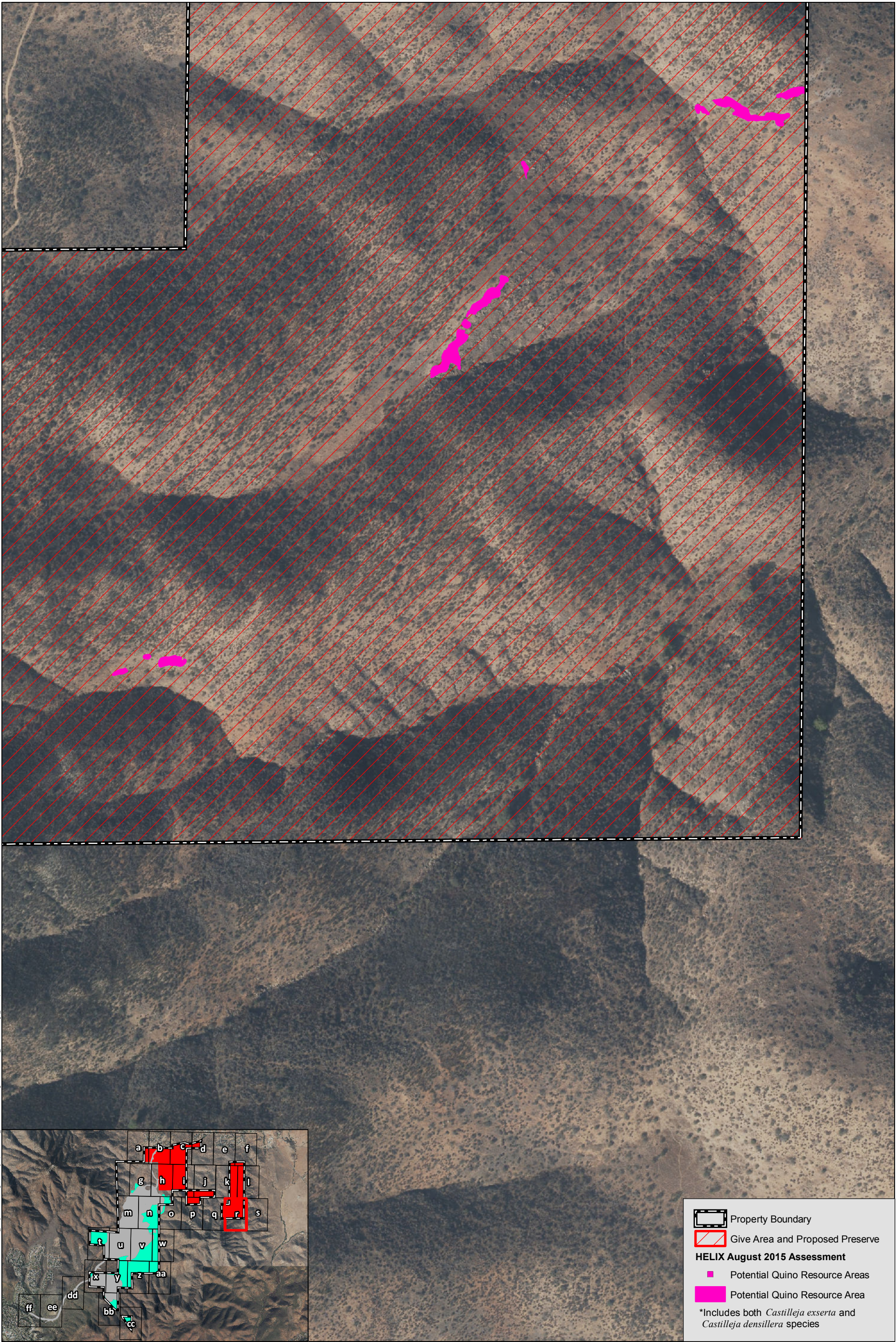
OTAY RANCH VILLAGE 14 AND PLANNING AREAS 16/19
LAND EXCHANGE ALTERNATIVE



2015 Quino Host Plant Mapping, Potential Resource Areas, and Historical Locations

OTAY RANCH VILLAGE 14 AND PLANNING AREAS 16/19
LAND EXCHANGE ALTERNATIVE







\\FEGS\VM\GIS\PROJECTS\JPD\JPD-08_OtayRanchVillage\Map\QC\Status_2016\LandExchange\Alt\Exhibit2_LandExchange_2015\QuinoHostPlant.mxd JPD-08_1/23/18-CL

2015 Quino Host Plant Mapping, Potential Resource Areas, and Historical Locations

OTAY RANCH VILLAGE 14 AND PLANNING AREAS 16/19
LAND EXCHANGE ALTERNATIVE

Property Boundary

HELIX August 2015 Assessment

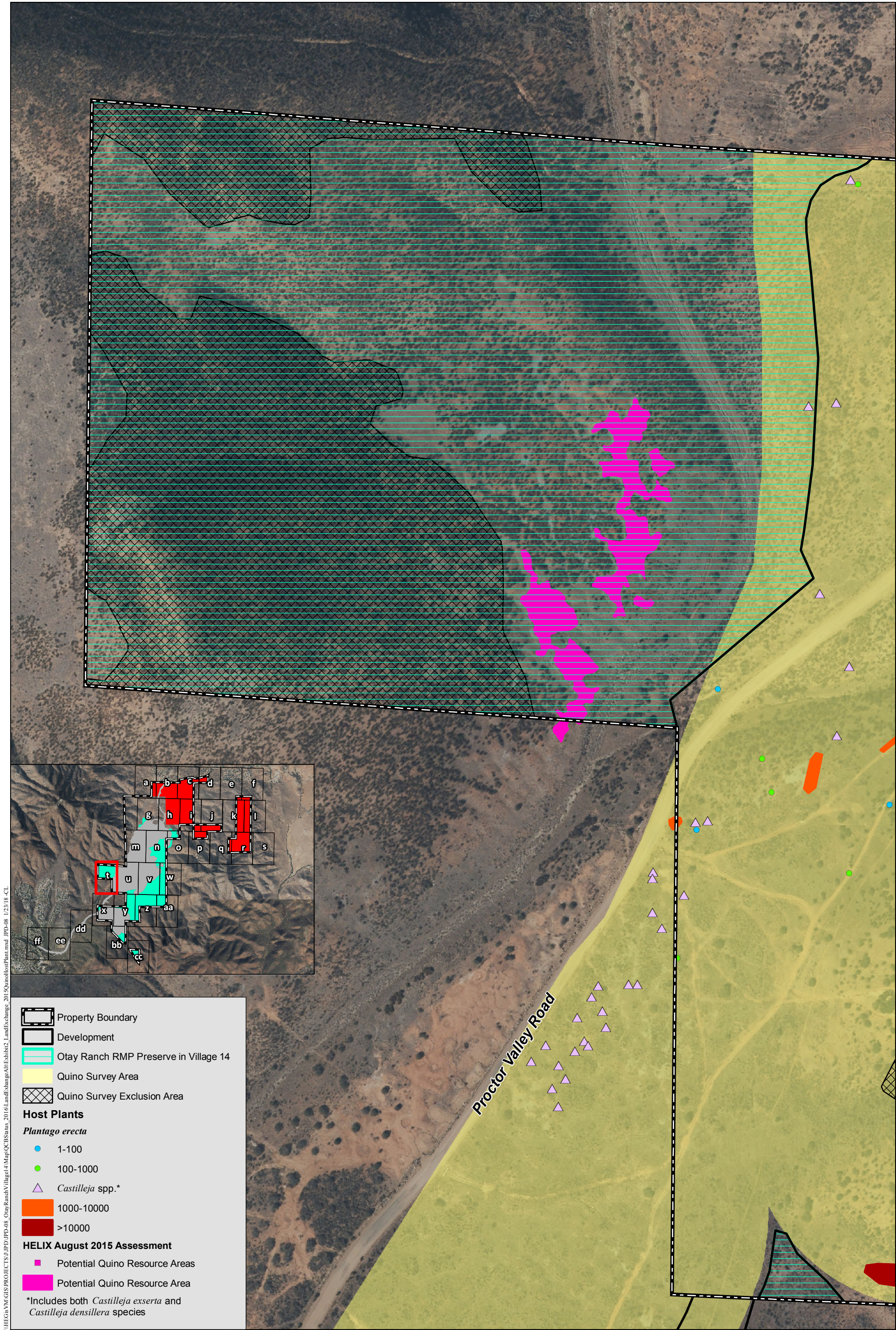
Potential Quino Resource Areas

*Includes both *Castilleja exserta* and *Castilleja densillera* species



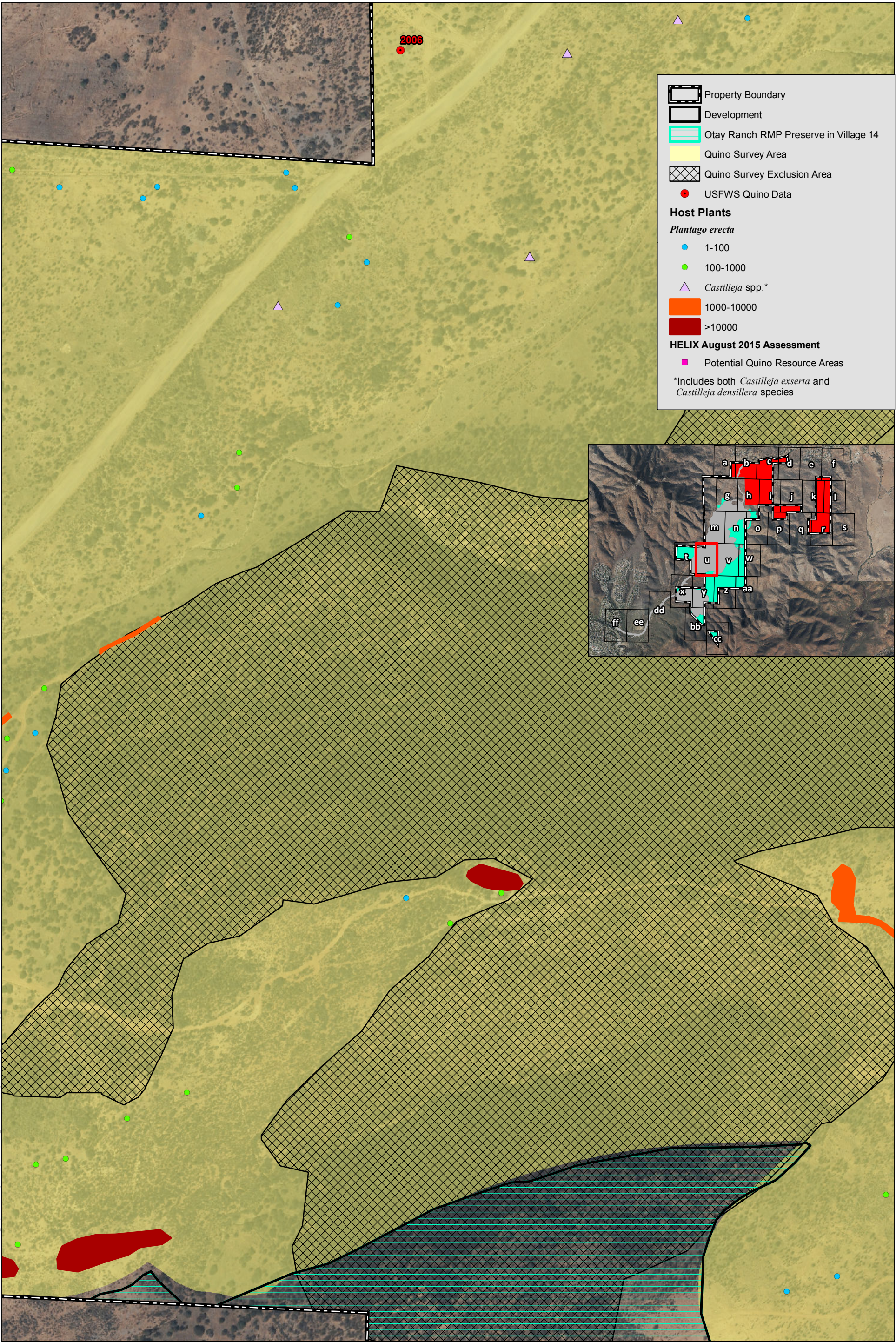
2015 Quino Host Plant Mapping, Potential Resource Areas, and Historical Locations

OTAY RANCH VILLAGE 14 AND PLANNING AREAS 16/19
LAND EXCHANGE ALTERNATIVE



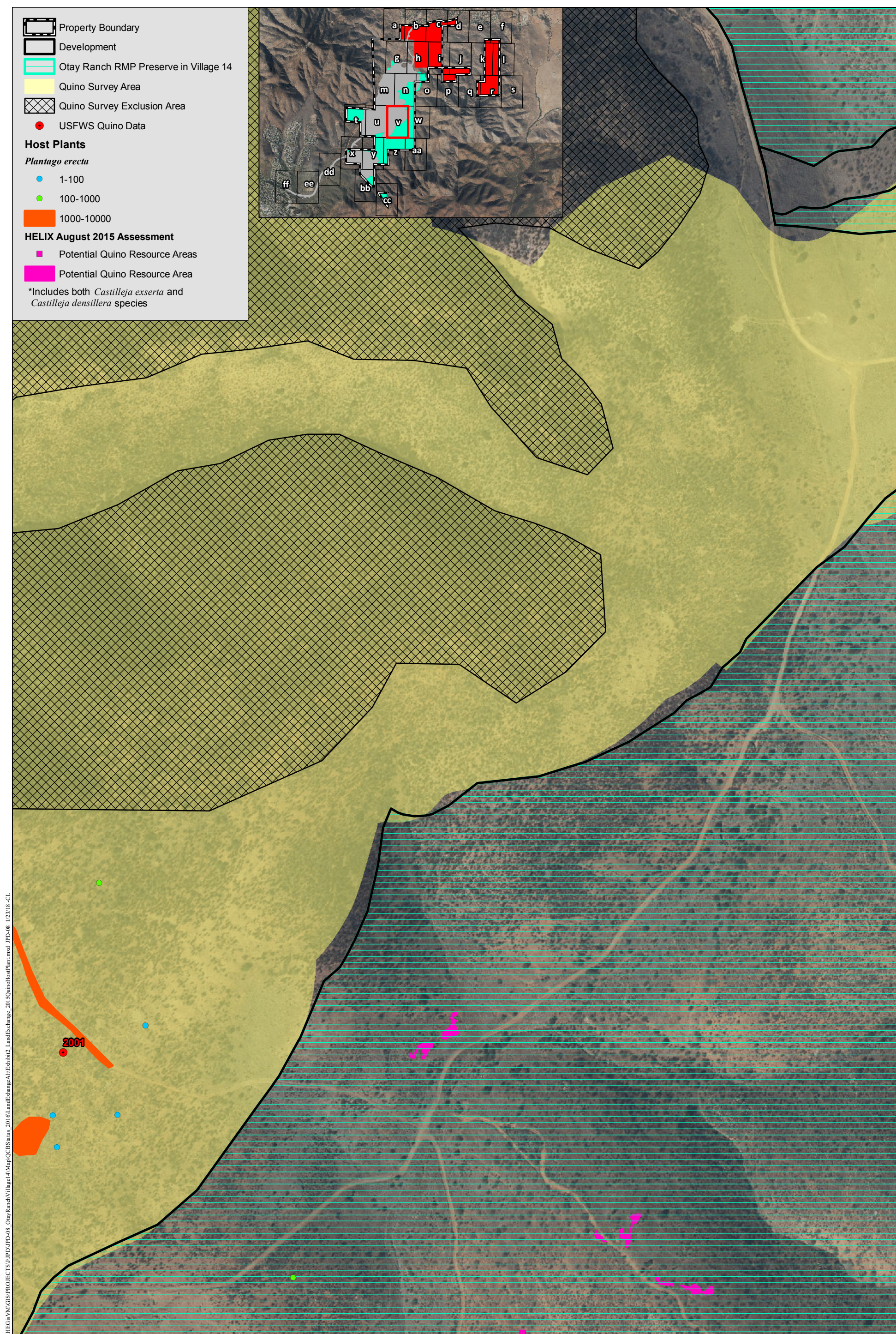
2015 Quino Host Plant Mapping, Potential Resource Areas, and Historical Locations

OTAY RANCH VILLAGE 14 AND PLANNING AREAS 16/19
LAND EXCHANGE ALTERNATIVE



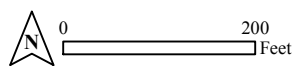
2015 Quino Host Plant Mapping, Potential Resource Areas, and Historical Locations

OTAY RANCH VILLAGE 14 AND PLANNING AREAS 16/19
LAND EXCHANGE ALTERNATIVE



2015 Quino Host Plant Mapping, Potential Resource Areas, and Historical Locations

OTAY RANCH VILLAGE 14 AND PLANNING AREAS 16/19
LAND EXCHANGE ALTERNATIVE

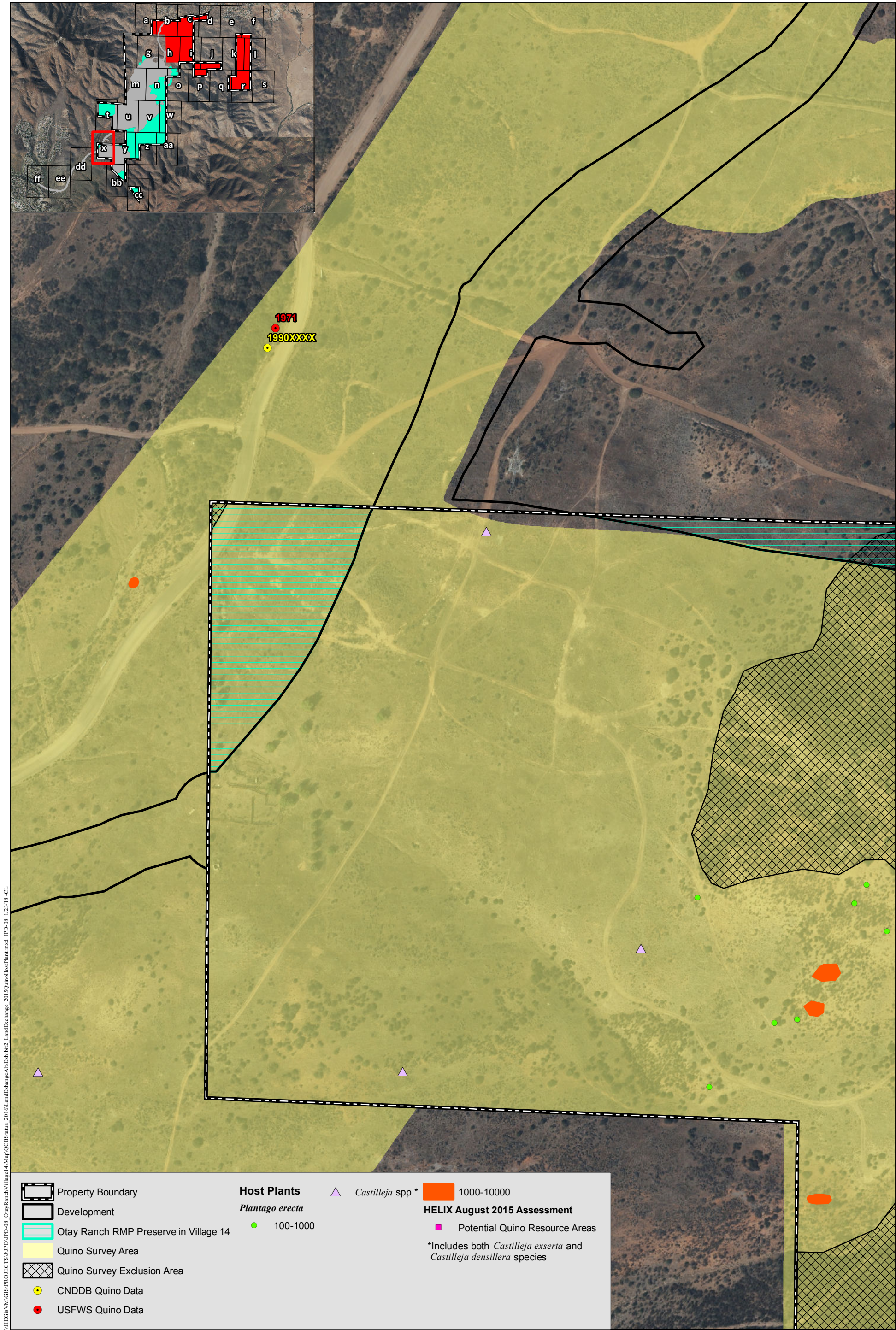




2015 Quino Host Plant Mapping, Potential Resource Areas, and Historical Locations

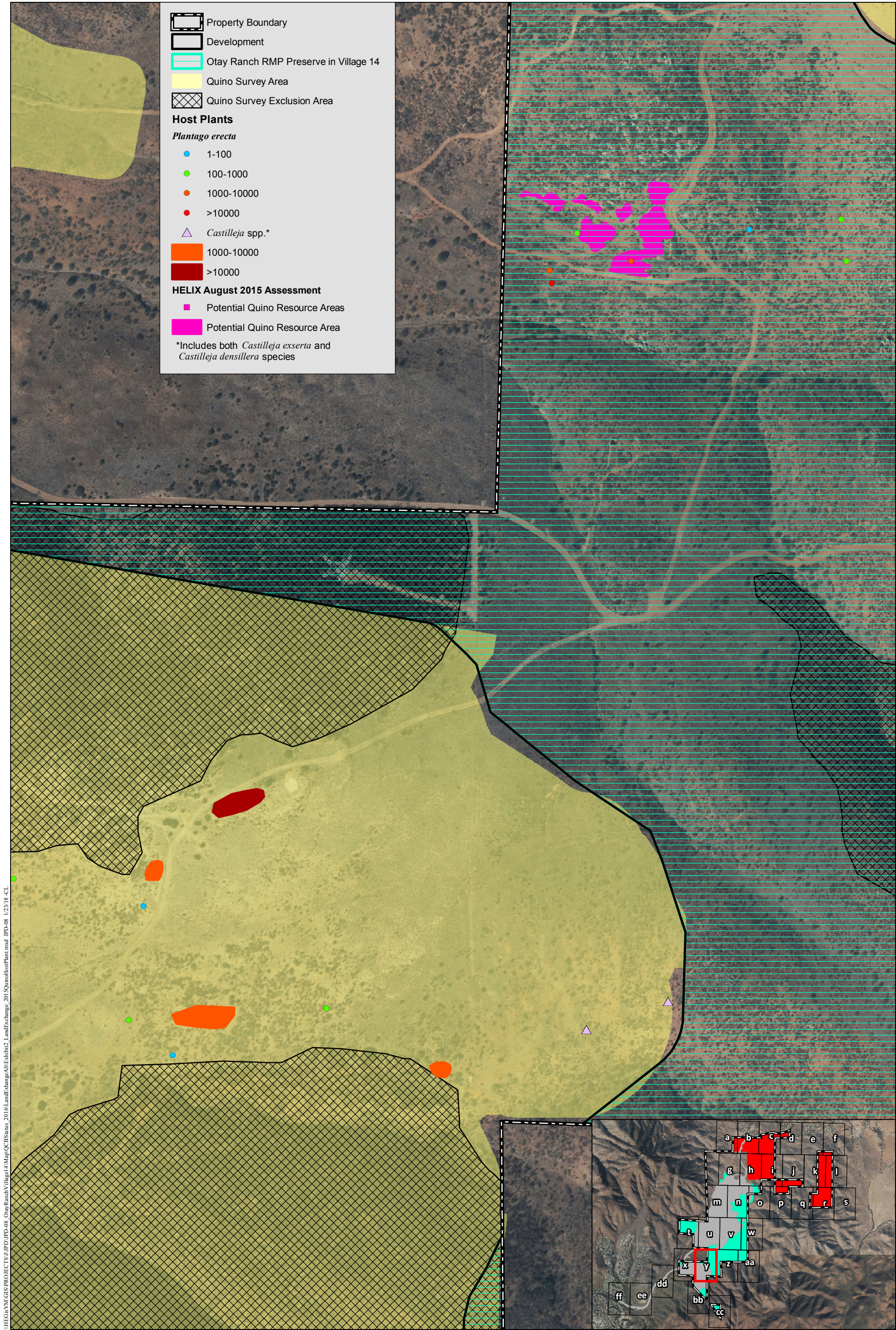
OTAY RANCH VILLAGE 14 AND PLANNING AREAS 16/19
LAND EXCHANGE ALTERNATIVE

Exhibit 2w



2015 Quino Host Plant Mapping, Potential Resource Areas, and Historical Locations

OTAY RANCH VILLAGE 14 AND PLANNING AREAS 16/19
LAND EXCHANGE ALTERNATIVE



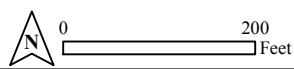
2015 Quino Host Plant Mapping, Potential Resource Areas, and Historical Locations

OTAY RANCH VILLAGE 14 AND PLANNING AREAS 16/19
LAND EXCHANGE ALTERNATIVE



2015 Quino Host Plant Mapping, Potential Resource Areas, and Historical Locations

OTAY RANCH VILLAGE 14 AND PLANNING AREAS 16/19
LAND EXCHANGE ALTERNATIVE





2015 Quino Host Plant Mapping, Potential Resource Areas, and Historical Locations

OTAY RANCH VILLAGE 14 AND PLANNING AREAS 16/19
LAND EXCHANGE ALTERNATIVE

\\HEG\svn\GIS\PROJECTS\UPD\JPP-08_OtayRanchVillage14\Map\QCBS\Status_2016\LandExchange\ALT\Exhibit2_LandExchange_2015\QuinoHostPlant.mxd JPP-08 1/23/18 -CL



2015 Quino Host Plant Mapping, Potential Resource Areas, and Historical Locations

OTAY RANCH VILLAGE 14 AND PLANNING AREAS 16/19
LAND EXCHANGE ALTERNATIVE

Property Boundary

Otay Ranch RMP Preserve in Village 14

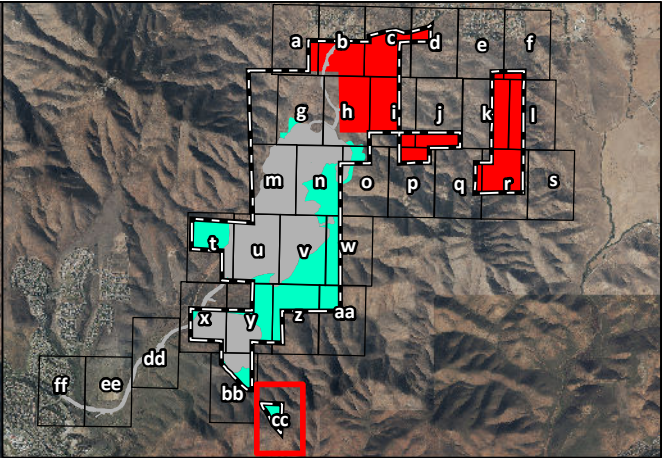
CNDDB Quino Data

USFWS Quino Data

HELIX August 2015 Assessment

Potential Quino Resource Areas

*Includes both *Castilleja exserta* and *Castilleja densillera* species



2000XXXX 2000 2009

2015 Quino Host Plant Mapping, Potential Resource Areas, and Historical Locations

OTAY RANCH VILLAGE 14 AND PLANNING AREAS 16/19
LAND EXCHANGE ALTERNATIVE

Property Boundary

Development

Quino Survey Area

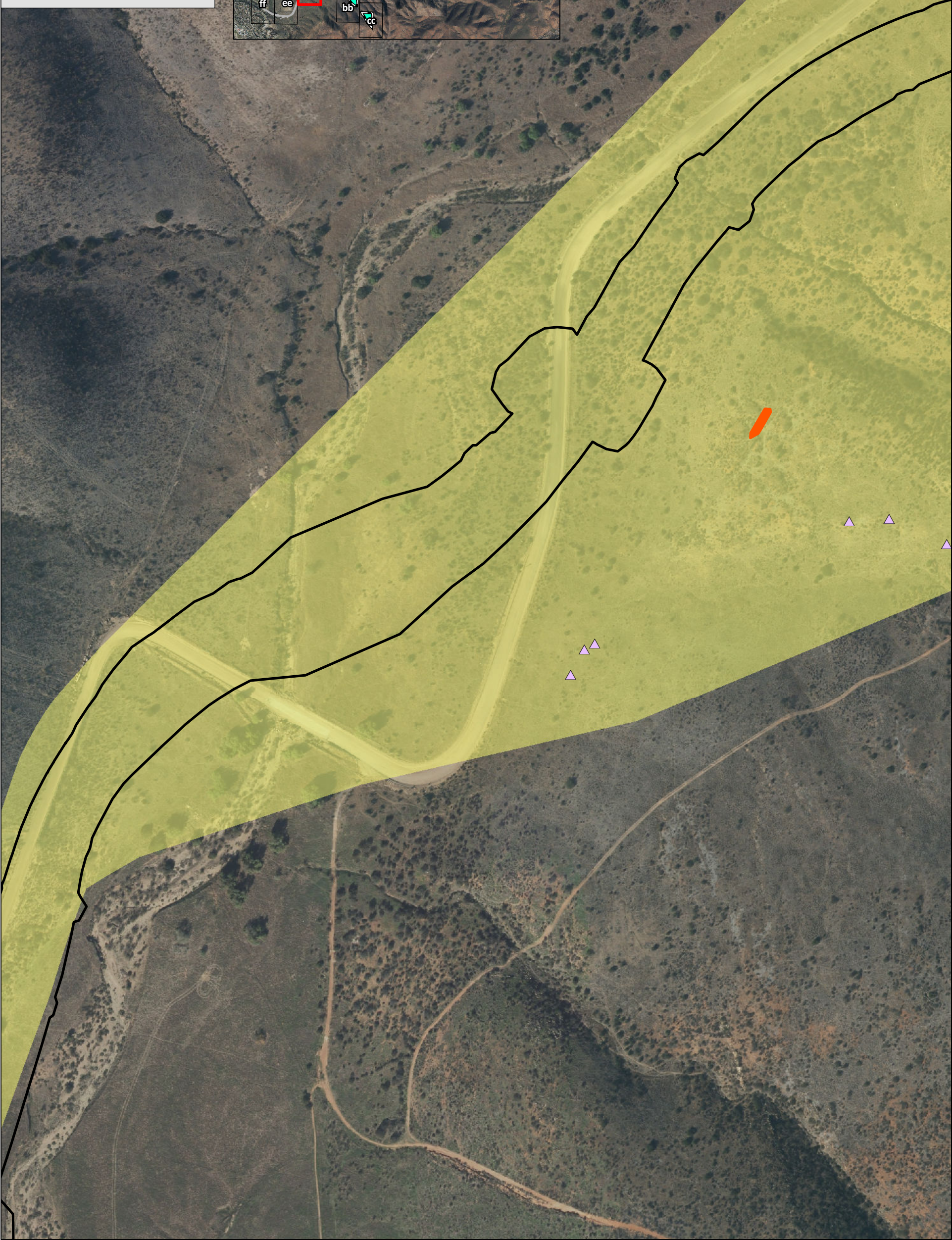
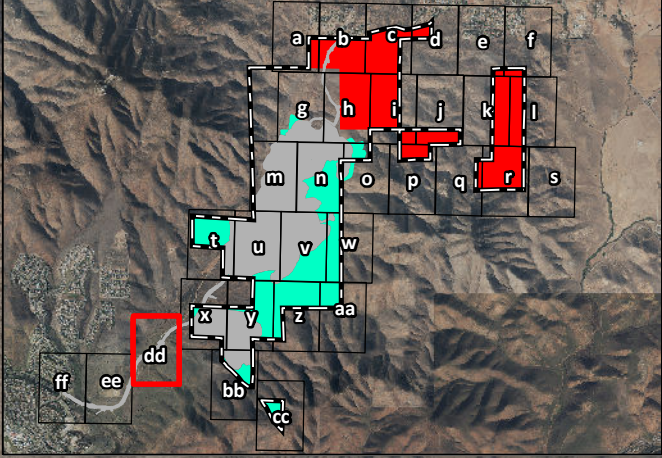
Castilleja spp.*

1000-10000

HELIX August 2015 Assessment

Potential Quino Resource Areas

*Includes both *Castilleja exserta* and *Castilleja densillera* species



2015 Quino Host Plant Mapping, Potential Resource Areas, and Historical Locations

OTAY RANCH VILLAGE 14 AND PLANNING AREAS 16/19
LAND EXCHANGE ALTERNATIVE

Property Boundary

Development

Quino Survey Area

Quino Survey Exclusion Area

CNDDB Quino Data

HELIX August 2015 Assessment

Potential Quino Resource Areas

*Includes both *Castilleja exserta* and *Castilleja densillera* species

2015 Quino Host Plant Mapping, Potential Resource Areas, and Historical Locations

OTAY RANCH VILLAGE 14 AND PLANNING AREAS 16/19
LAND EXCHANGE ALTERNATIVE

HELIX
Environmental Planning

0 200 Feet

Exhibit 2ee

Property Boundary

Development

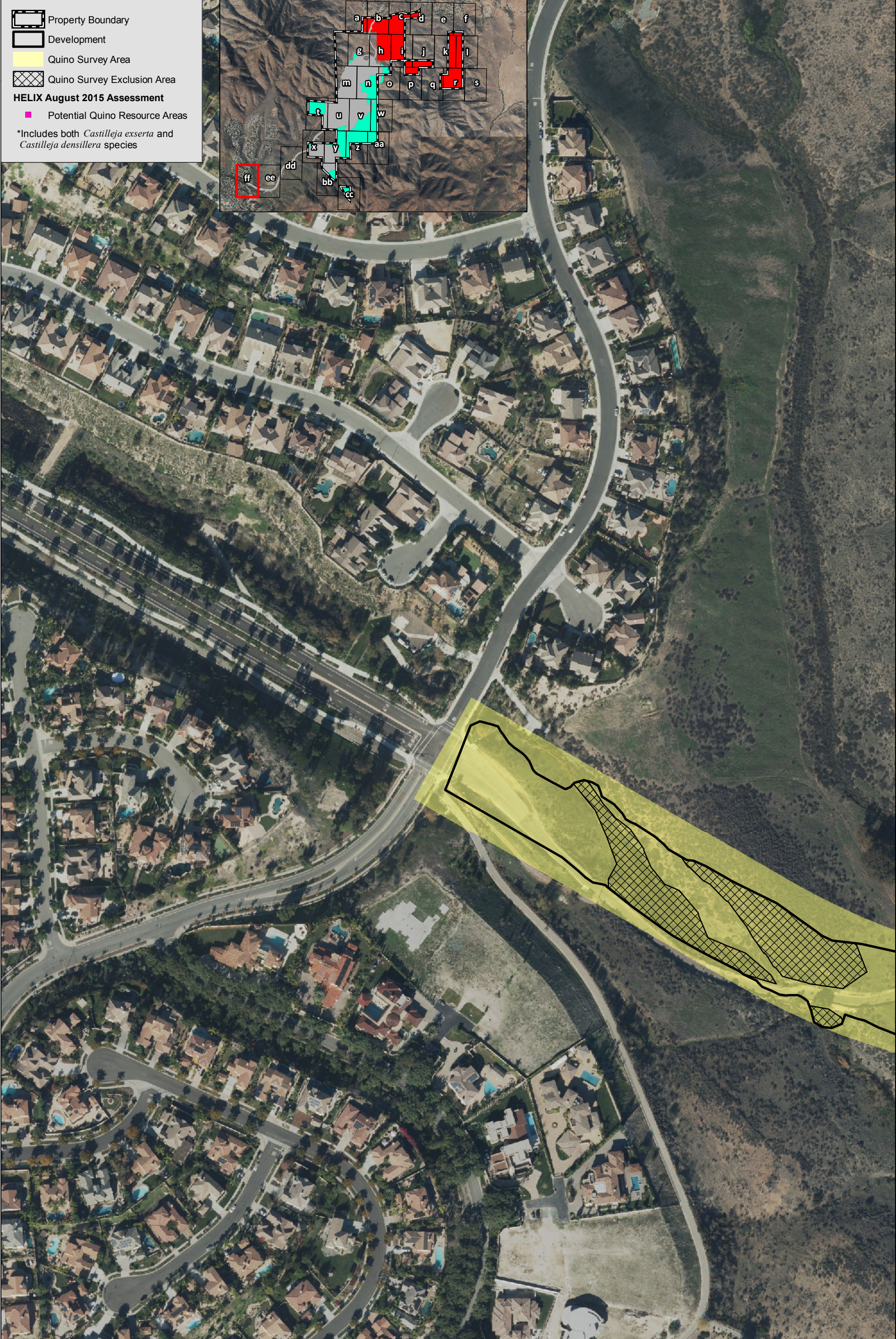
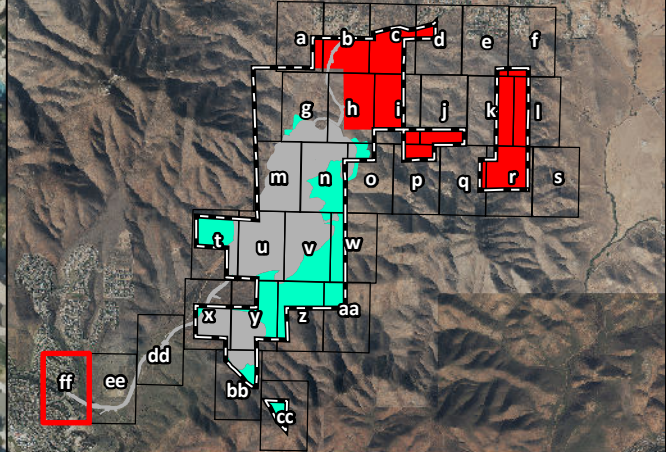
Quino Survey Area

Quino Survey Exclusion Area

HELIX August 2015 Assessment

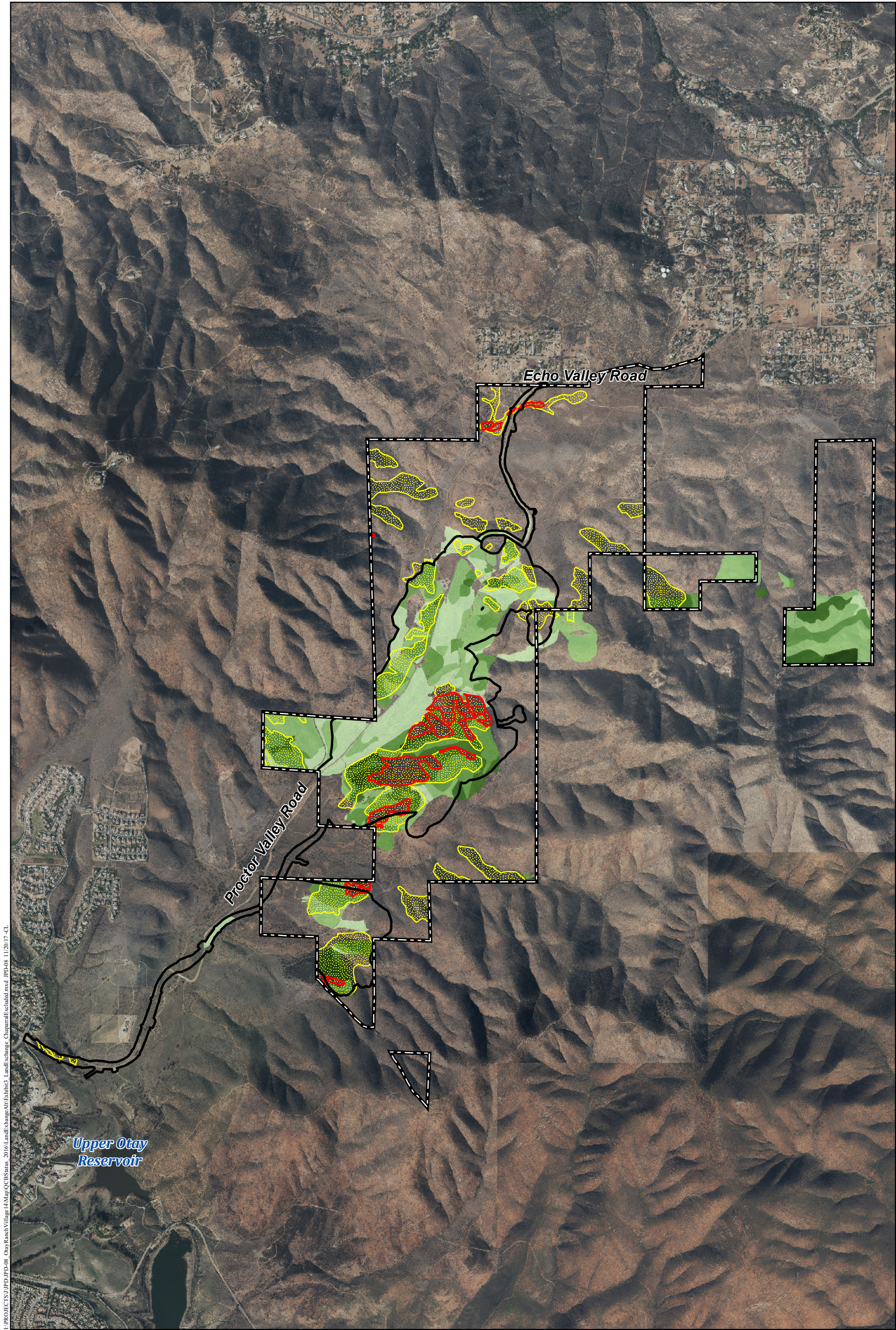
Potential Quino Resource Areas

*Includes both *Castilleja exserta* and *Castilleja densillera* species



2015 Quino Host Plant Mapping, Potential Resource Areas, and Historical Locations

OTAY RANCH VILLAGE 14 AND PLANNING AREAS 16/19
LAND EXCHANGE ALTERNATIVE



I:\PROJECTS\JPD\JPD-08_Otay Ranch Village\4Map\QCBStatus_2016\LandExchange\Map\Exhibit3_LandExchange_ChaparralExcluded.mxd JPD-08 11/20/17 CL

Chaparral Cover and QCB Excluded Habitat

OTAY RANCH VILLAGE 14 AND PLANNING AREAS 16/19
LAND EXCHANGE ALTERNATIVE

Exhibit 3