

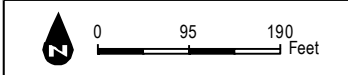
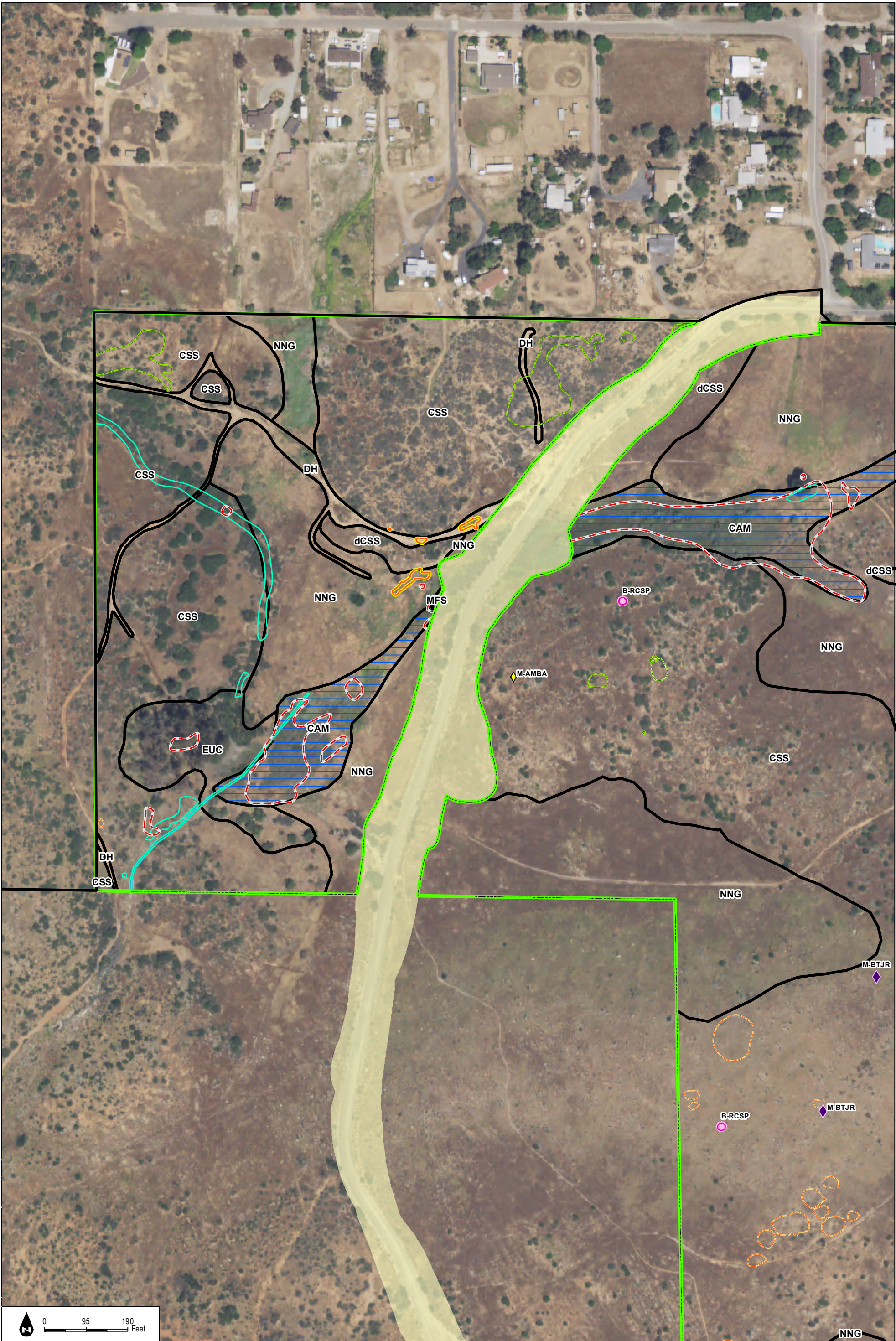
- Project Area**
- Development Footprint
 - Otay Ranch RMP and MSCP Preserve
- Special-status Plants**
- Dunn's mariposa lily
 - Gander's pitcher sage
 - Munz's sage
 - Orcutt's brodiaea
 - Otay manzanita
 - San Diego County needle grass
 - San Diego County viguiera
 - San Diego barrel cactus
 - San Diego goldenstar
 - San Diego marsh-elder
 - San Diego sagewort
 - San Miguel Savory
 - ashy spike-moss
 - delicate clarkia
 - golden-rayed pentachaeta
 - graceful tarplant
 - southwestern spiny rush
 - western dichondra

- Special-status Wildlife**
- Bird=B-CAGN=Coastal California gnatcatcher
 - Bird=B-HOLA=California horned lark
 - Bird=B-LEOW=Long-eared owl
 - Bird=B-LOSH=Loggerhead shrike
 - Bird=B-NOHA=Northern harrier
 - Bird=B-NUWO=Nuttall's woodpecker
 - Bird=B-RCSP=Southern California rufous-crowned sparrow
 - Bird=B-WTKI=White-tailed kite
 - Mammal=M-AMBA=American badger (burrow only)
 - Mammal=M-BTJR=San Diego black-tailed jackrabbit
 - Reptile=R-BHLI=Blainville's horned lizard
 - Reptile=R-COWH=Coastal whiptail
 - Reptile=R-ROBO=Rosy boa
 - San Diego Fairy Shrimp (*Branchinecta sandiegonensis*)

- Vegetation Communities**
- CAM=Cismontane Alkali Marsh
 - CC=Chamise Chaparral
 - CSS=Diegan Coastal Sage Scrub
 - DEV=Developed
 - DH=Disturbed Habitat
 - EUC=Eucalyptus Woodland
 - MFS=Mulefat Scrub
 - NNG=Non-Native Grassland
 - ORF=Oak Riparian Forest
 - OW=Open Water
 - SMX=Southern Mixed Chaparral
 - SWS=Southern Willow Scrub
 - dCSS=disturbed Coastal Sage Scrub
- Jurisdictional Delineation**
- ACOE/RWQCB/CDFW Waters or Streambed
 - ACOE/RWQCB/CDFW Wetlands or Riparian Habitat
 - Data Stations

FIGURE 2-1
Biological Resources - Legend

INTENTIONALLY LEFT BLANK



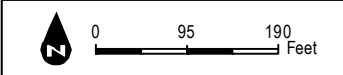
DUDEK

SOURCE: NAIP 2016; Hunsaker 2017

Otay Ranch Village 14 and Planning Areas 16/19 - Land Exchange Alternative Preserve Status Report

FIGURE 2-1A
Biological Resources

INTENTIONALLY LEFT BLANK



INTENTIONALLY LEFT BLANK

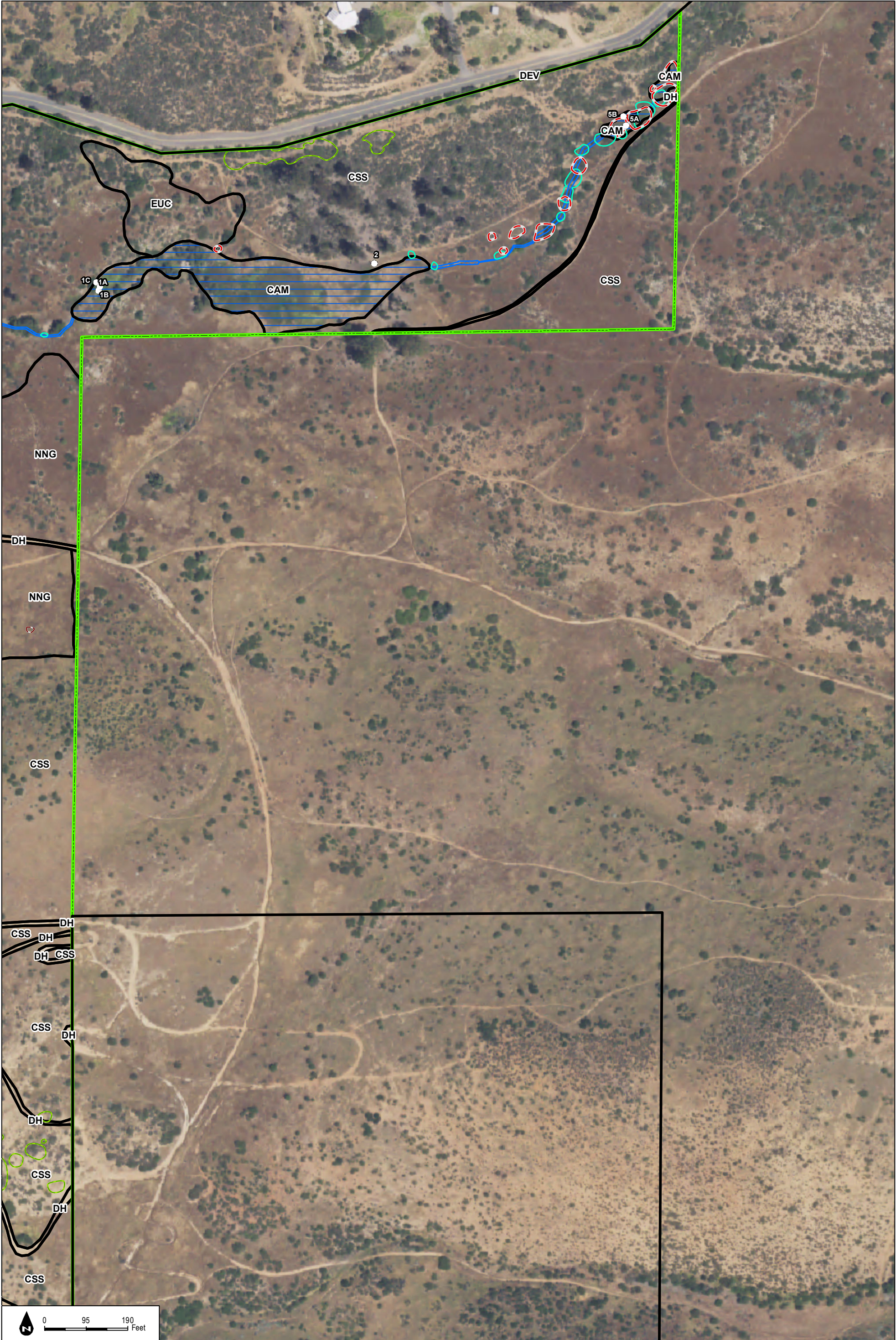
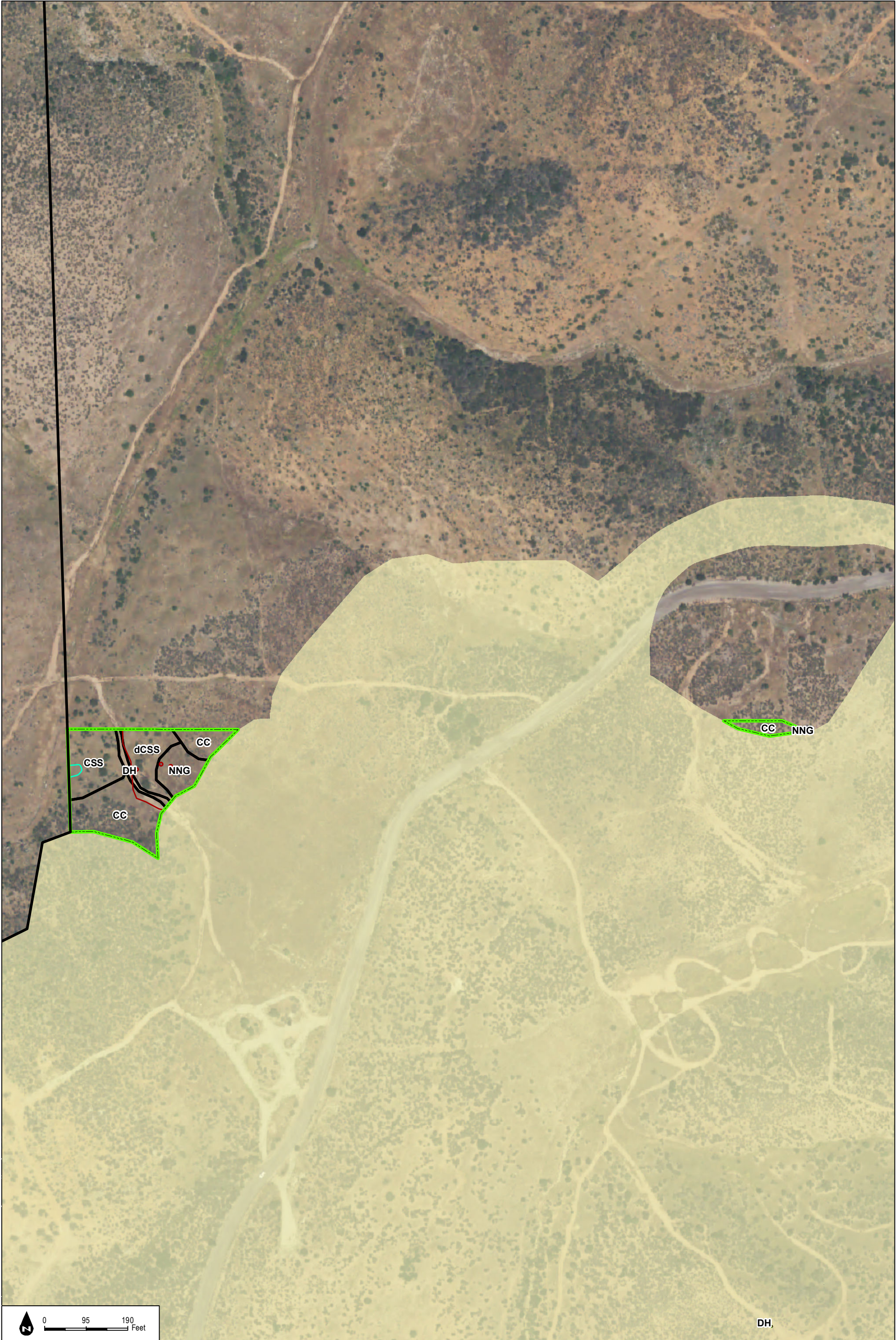


FIGURE 2-1C
Biological Resources

INTENTIONALLY LEFT BLANK



DH,

INTENTIONALLY LEFT BLANK

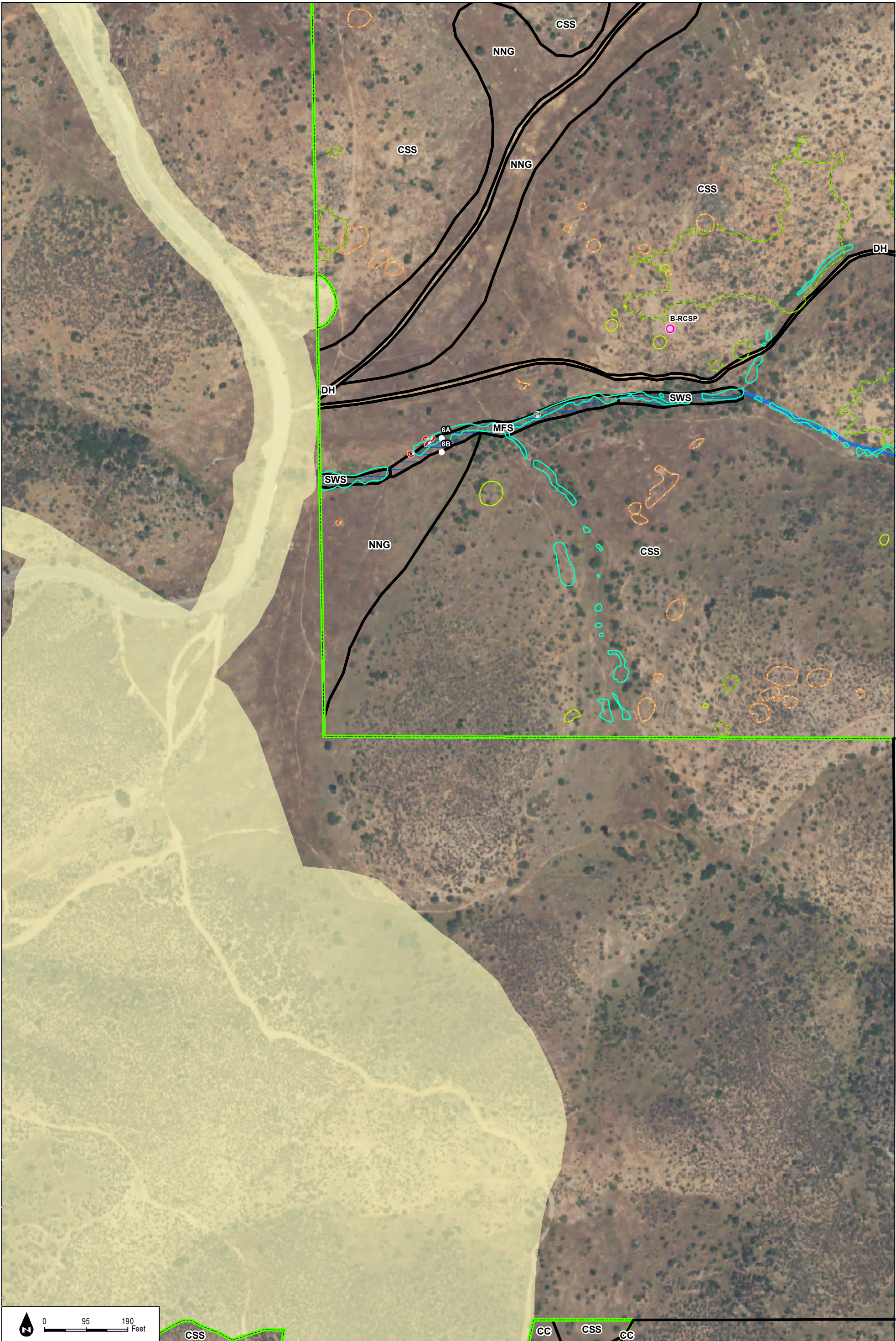


FIGURE 2-1E
Biological Resources

SOURCE: NAIP 2016; Hunsaker 2017

Otay Ranch Village 14 and Planning Areas 16/19 - Land Exchange Alternative Preserve Status Report

INTENTIONALLY LEFT BLANK

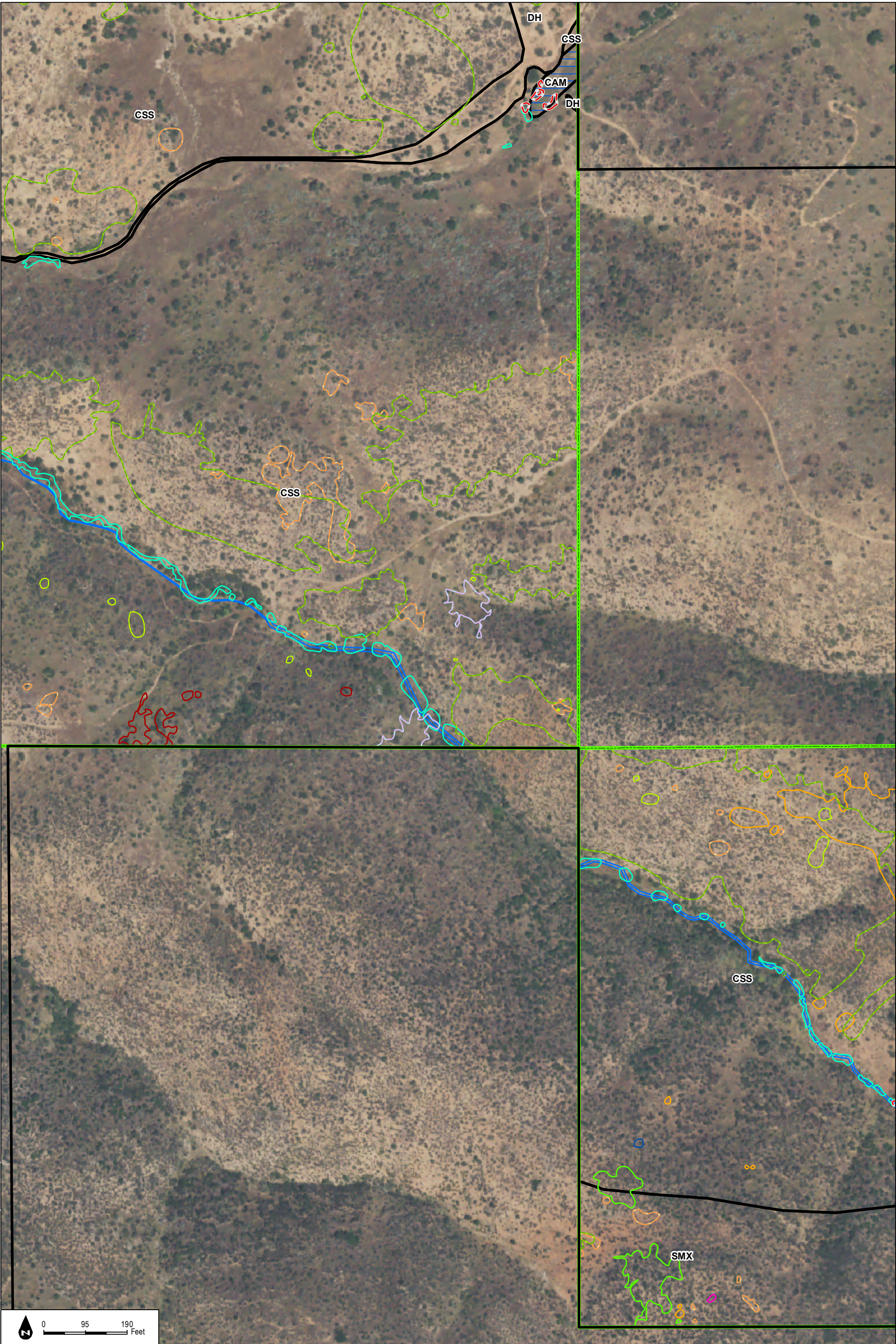


FIGURE 2-1F
Biological Resources

INTENTIONALLY LEFT BLANK

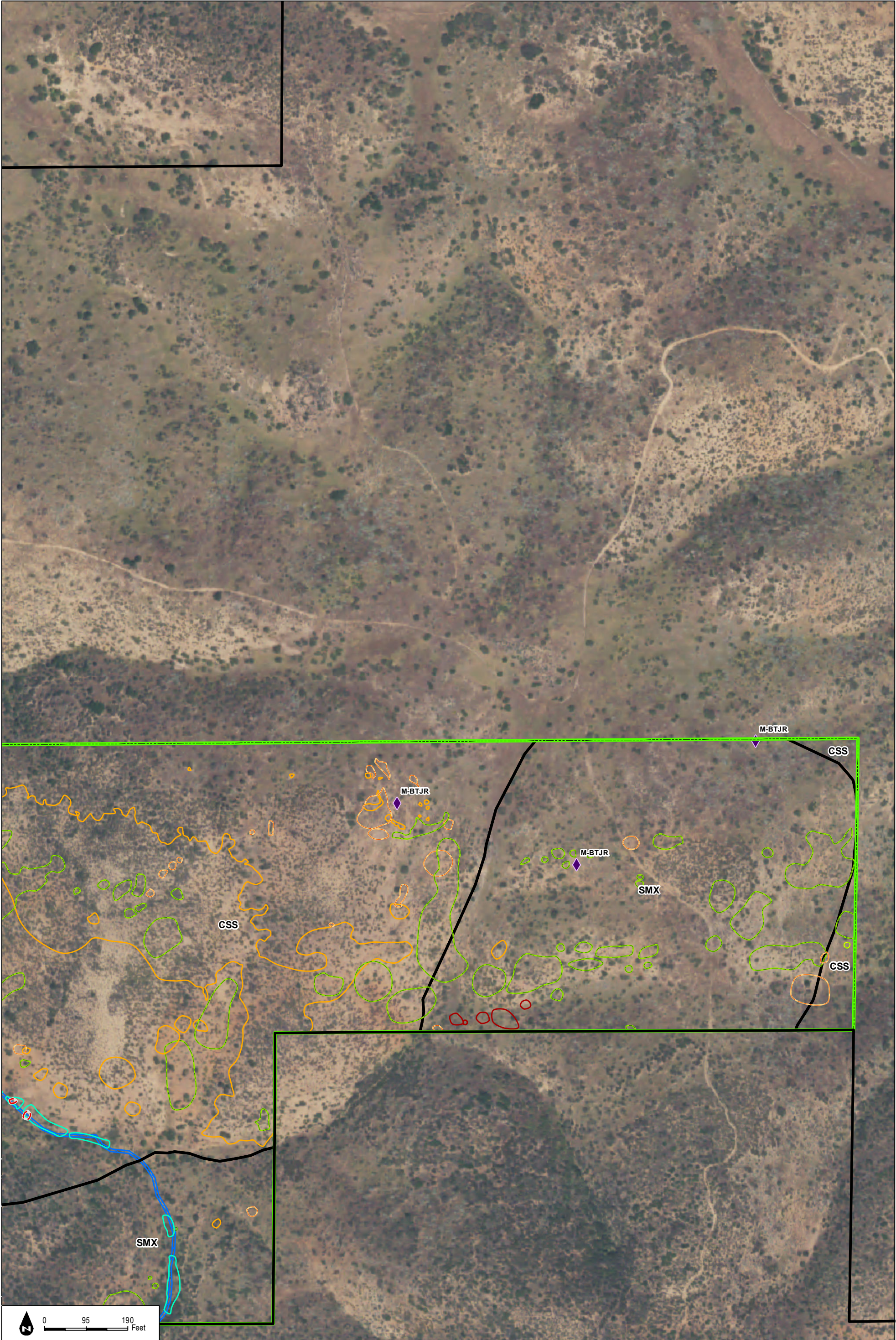


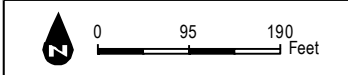
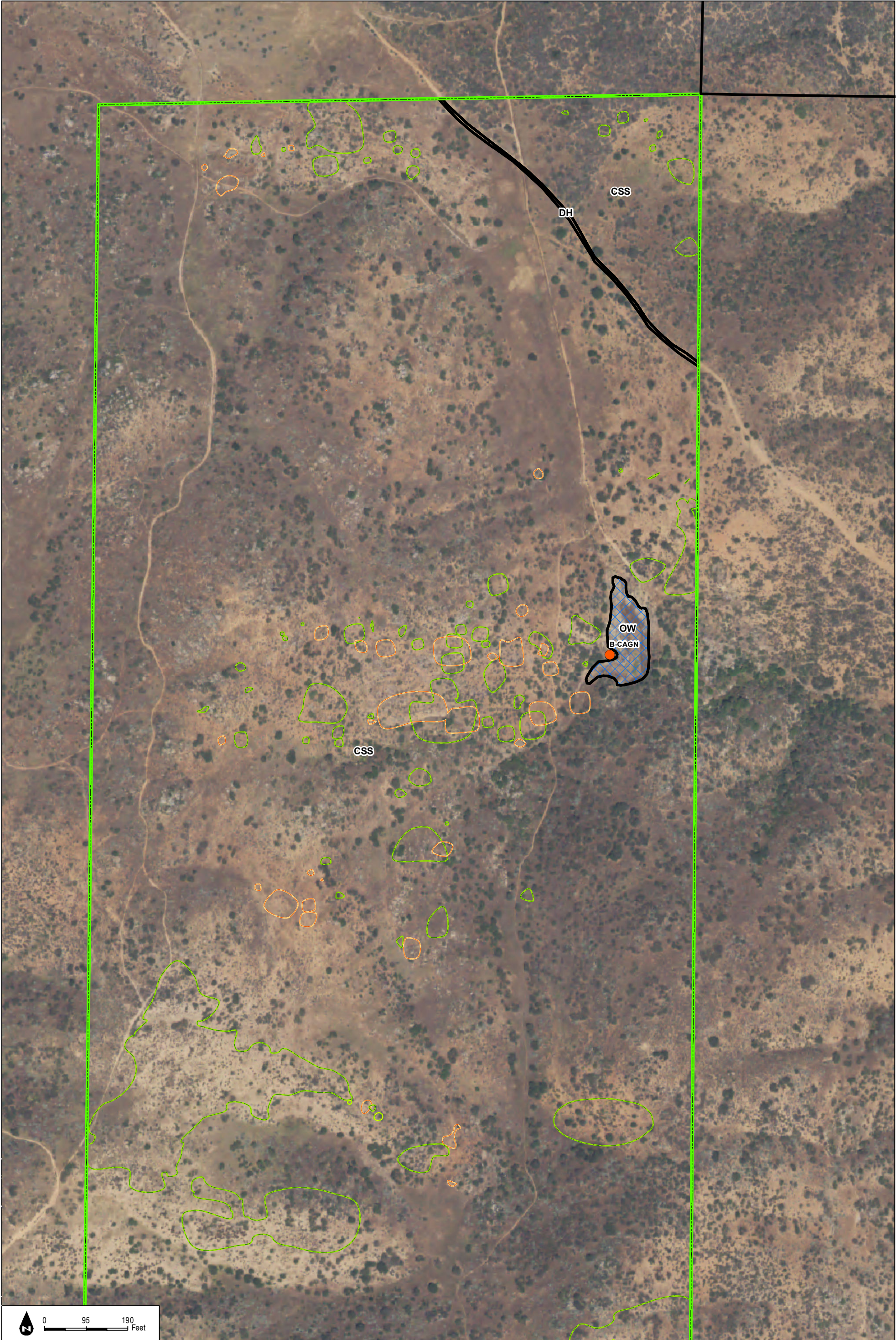
FIGURE 2-1G
Biological Resources

SOURCE: NAIP 2016; Hunsaker 2017

Otay Ranch Village 14 and Planning Areas 16/19 - Land Exchange Alternative Preserve Status Report



INTENTIONALLY LEFT BLANK



INTENTIONALLY LEFT BLANK

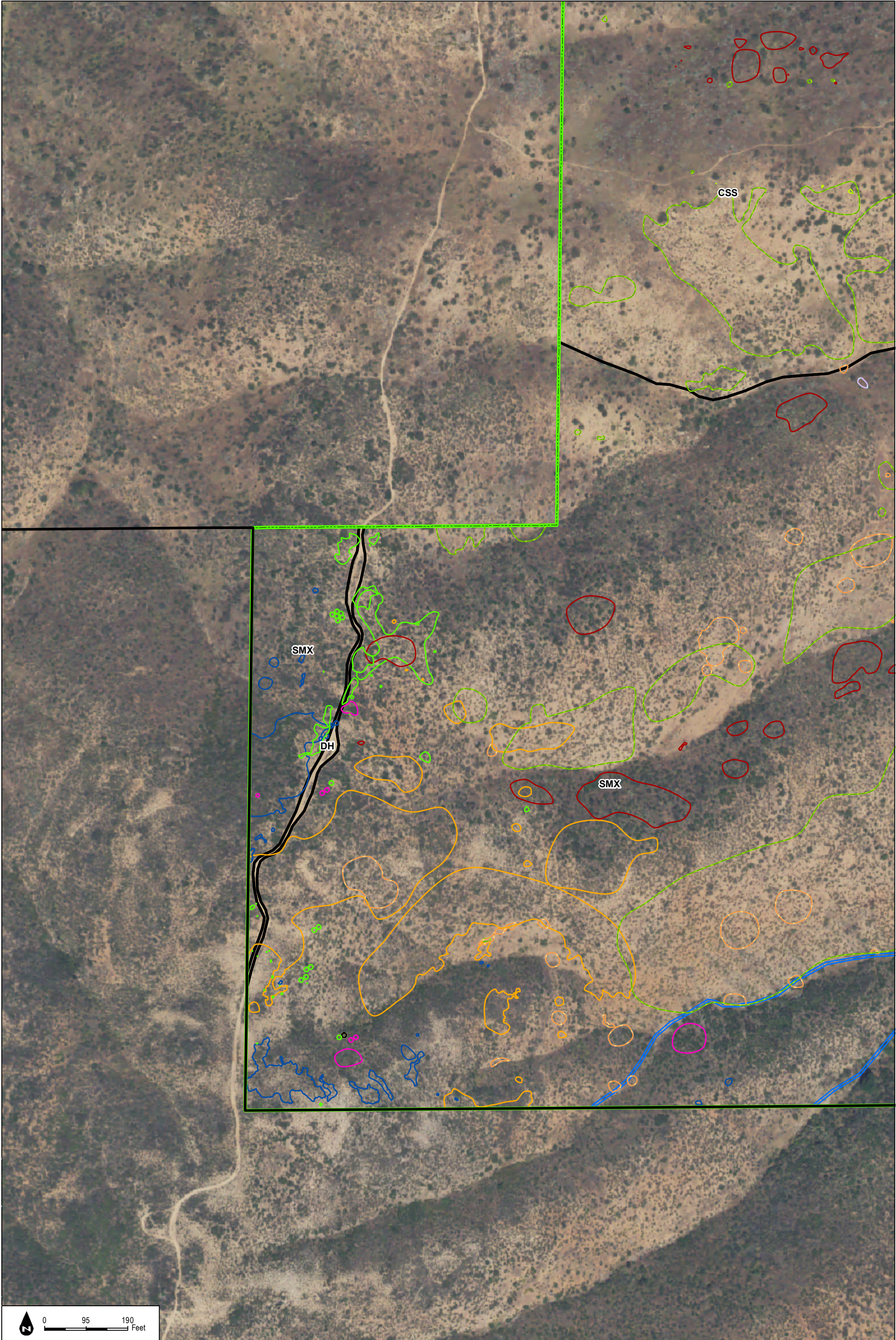
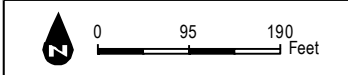
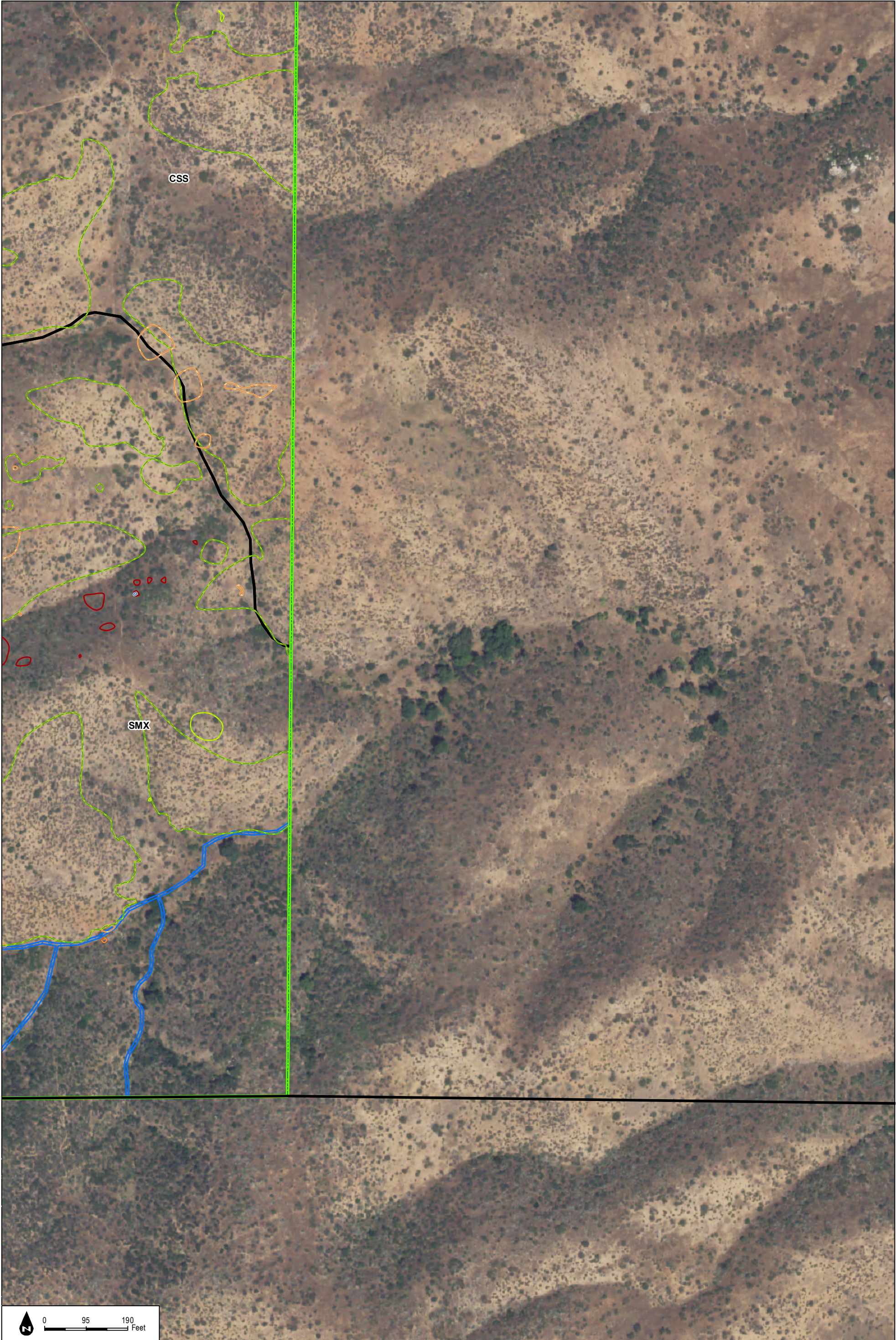


FIGURE 2-1i
Biological Resources

SOURCE: NAIP 2016; Hunsaker 2017

INTENTIONALLY LEFT BLANK



INTENTIONALLY LEFT BLANK

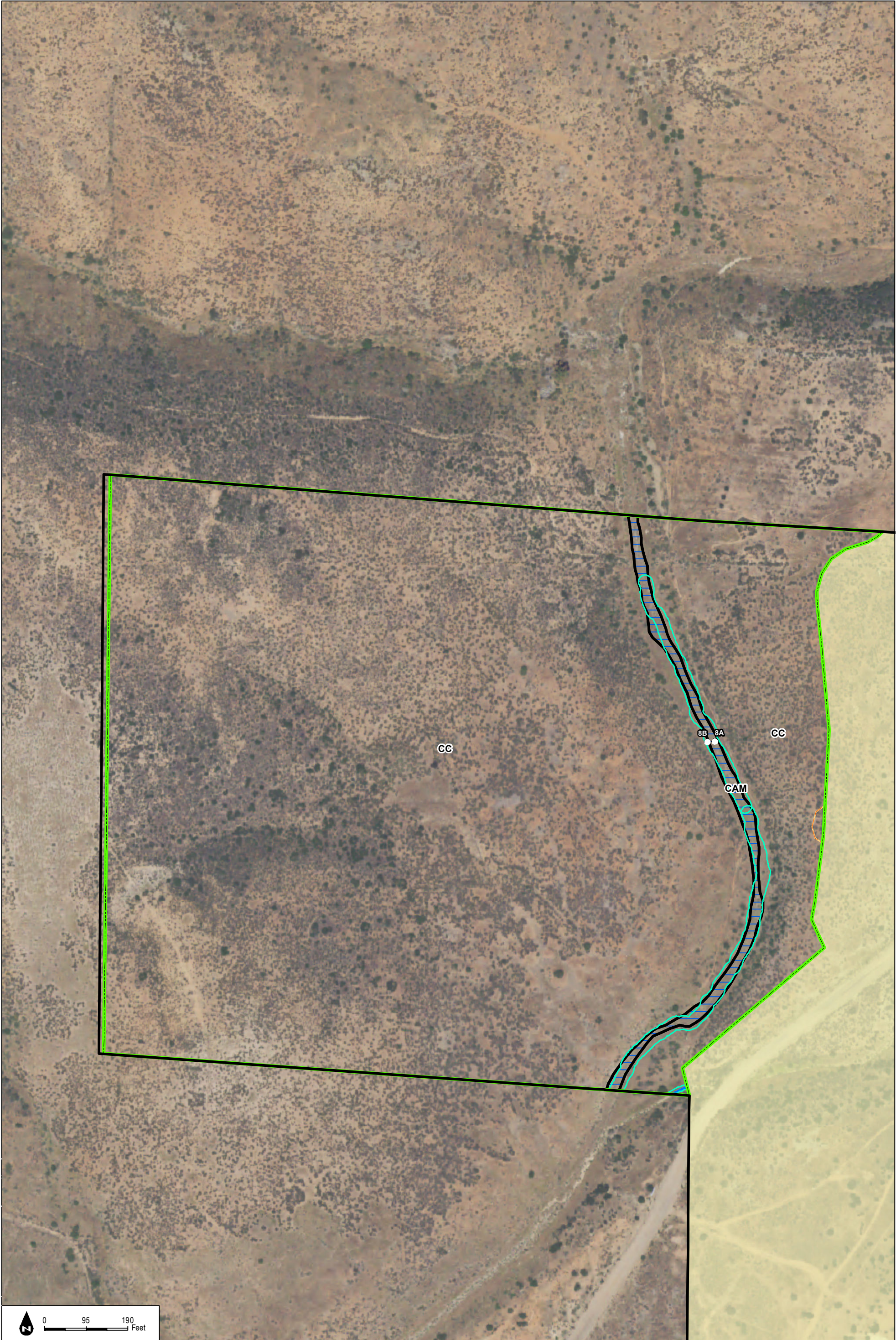


FIGURE 2-1K
Biological Resources

INTENTIONALLY LEFT BLANK



FIGURE 2-1L
Biological Resources

INTENTIONALLY LEFT BLANK