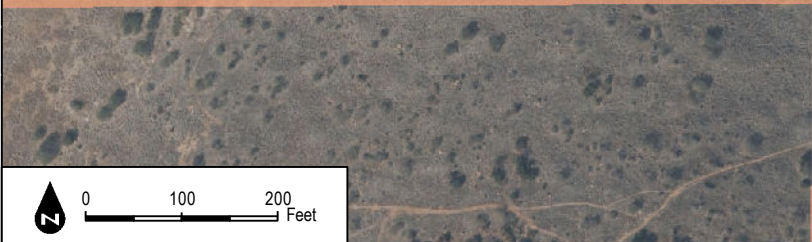
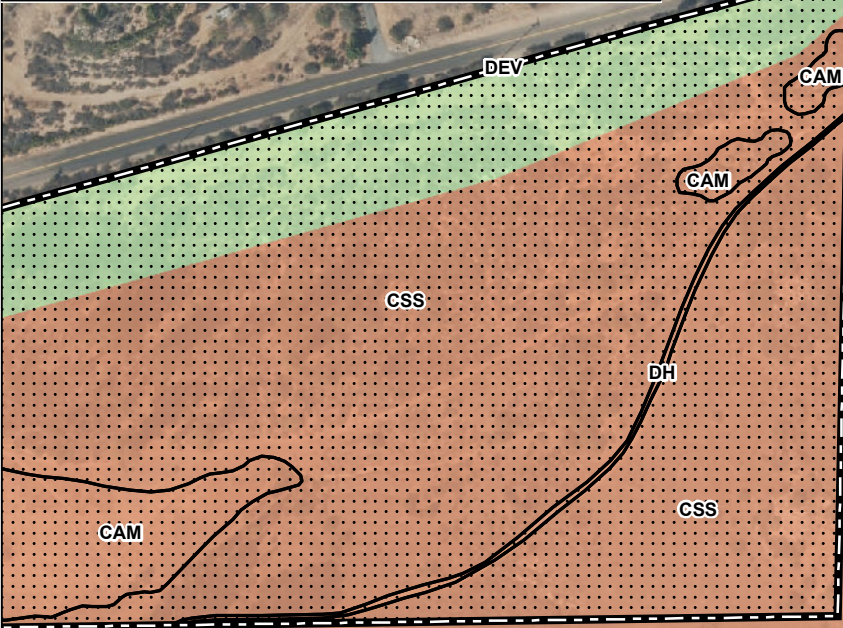
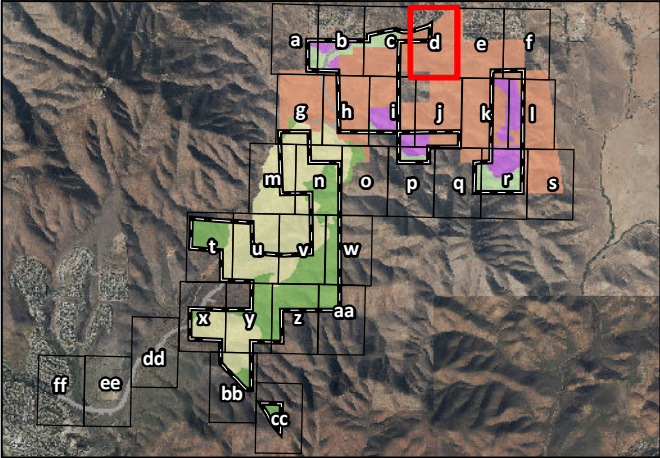
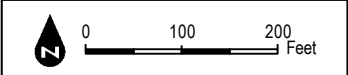


INTENTIONALLY LEFT BLANK

- Project Boundary
- Given or Exchanged, State Owned
- Otay Ranch RMP Preserve in PA 16/19
- Quino Survey Area
- Vegetation
- CAM=Cismontane Alkali Marsh
- CSS=Diegan Coastal Sage Scrub
- DEV=Developed
- DH=Disturbed Habitat

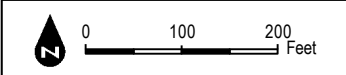


INTENTIONALLY LEFT BLANK







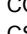


INTENTIONALLY LEFT BLANK

- Project Boundary
- Given or Exchanged, Otay Owned
- Given or Exchanged, State Owned
- Quino Survey Area
- Vegetation
- CSS=Diegan Coastal Sage Scrub
- DH=Disturbed Habitat



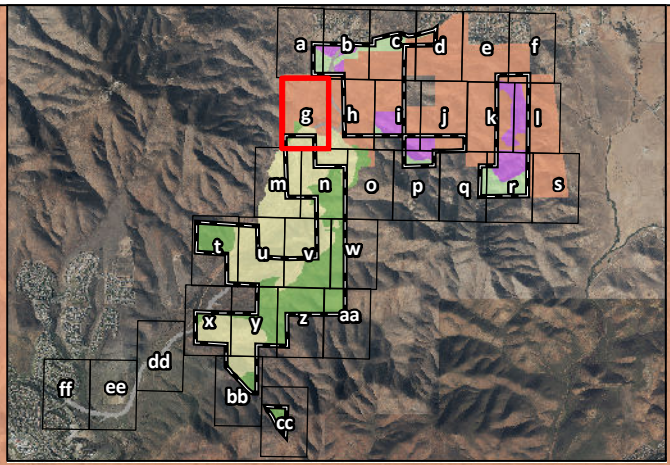
INTENTIONALLY LEFT BLANK

-  Project Boundary
 Development
 Given or Exchanged, State Owned
 Off-Site Proctor Valley Road
 Otay Ranch RMP Preserve in Village 14
 Quino Survey Area
 Vegetation
CC=Chamise Chaparral
CSS=Diegan Coastal Sage Scrub
DEV=Developed
DH=Disturbed Habitat
NNG=Non-Native Grassland
dCSS=disturbed Coastal Sage Scrub

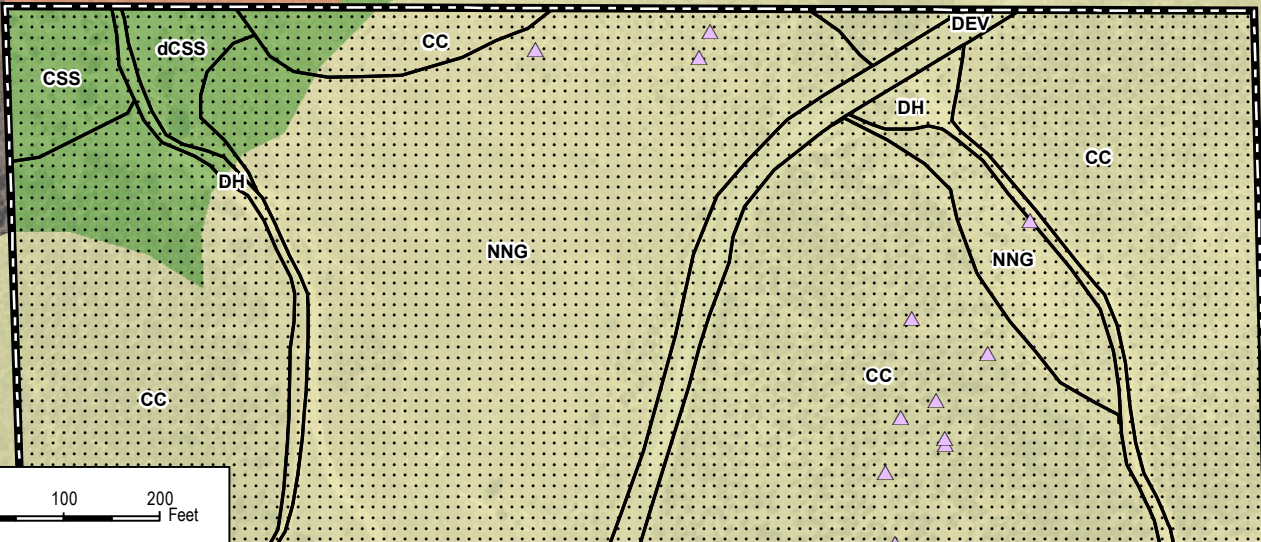
Host Plants

Castilleja spp. (*C. exserta*; *C. densiflora*)

 1-99



Proctor Valley Road

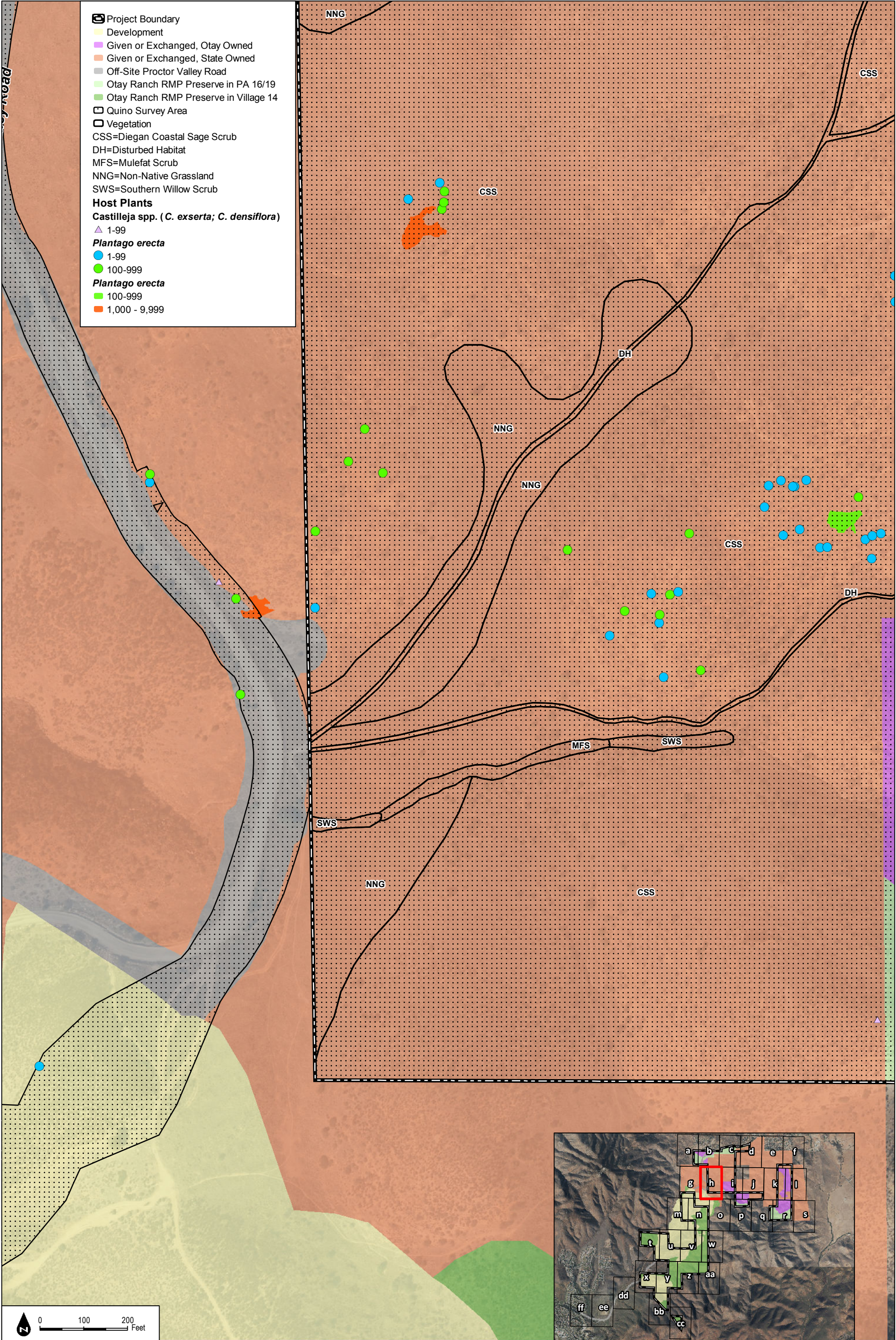


SOURCE: SanGIS 2014, Hunsacker 2017, HELIX 2016

Figure 4-2g
2016 Quino Host Plant Mapping and Historical Locations

Otay Ranch Village 14 and Planning Area 16/19 - Land Exchange Alternative

INTENTIONALLY LEFT BLANK



SOURCE: SanGIS 2014, Hunsacker 2017, HELIX 2016

DUDEK

Otay Ranch Village 14 and Planning Area 16/19 - Land Exchange Alternative

Figure 4-2h
2016 Quino Host Plant Mapping and Historical Locations

INTENTIONALLY LEFT BLANK

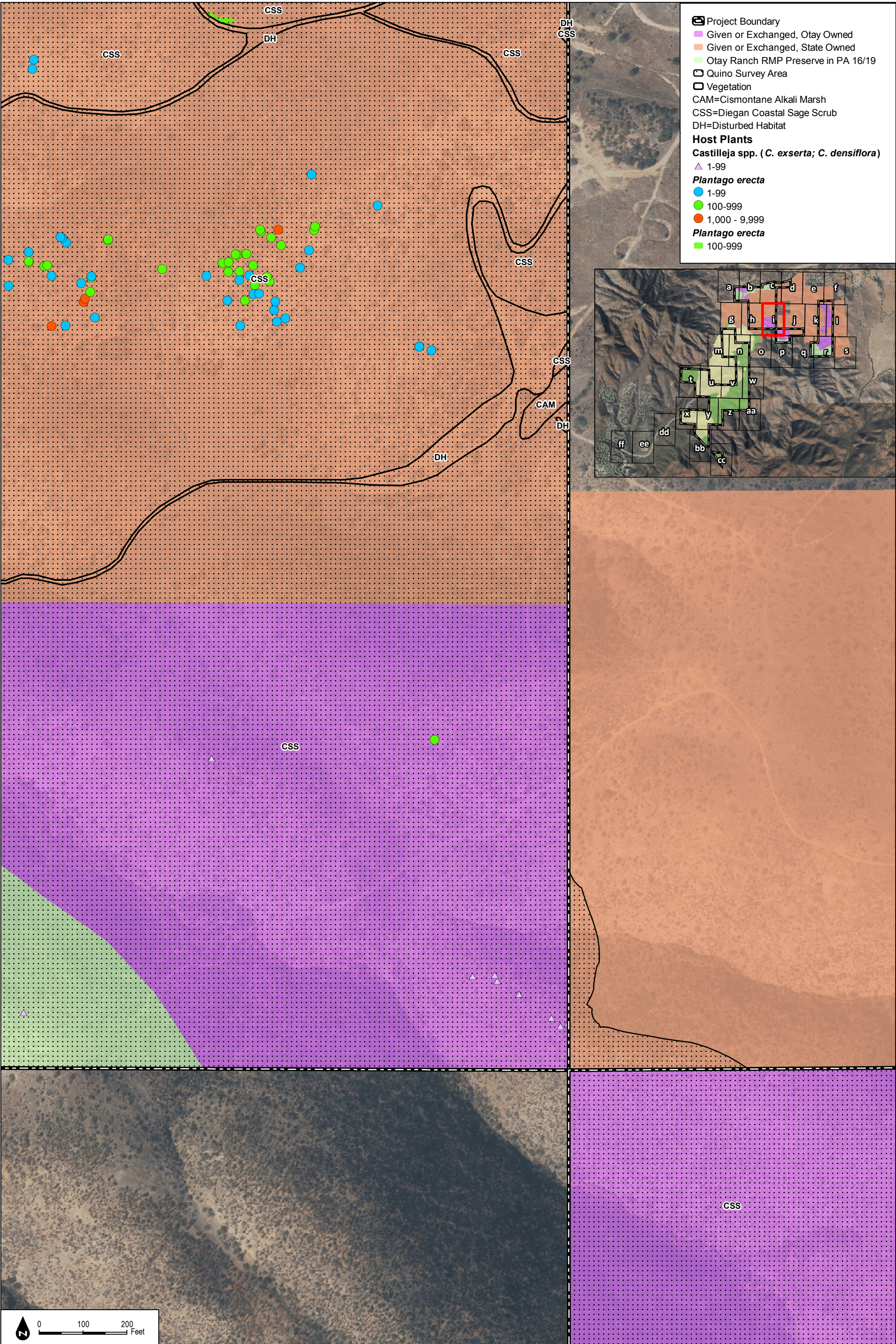
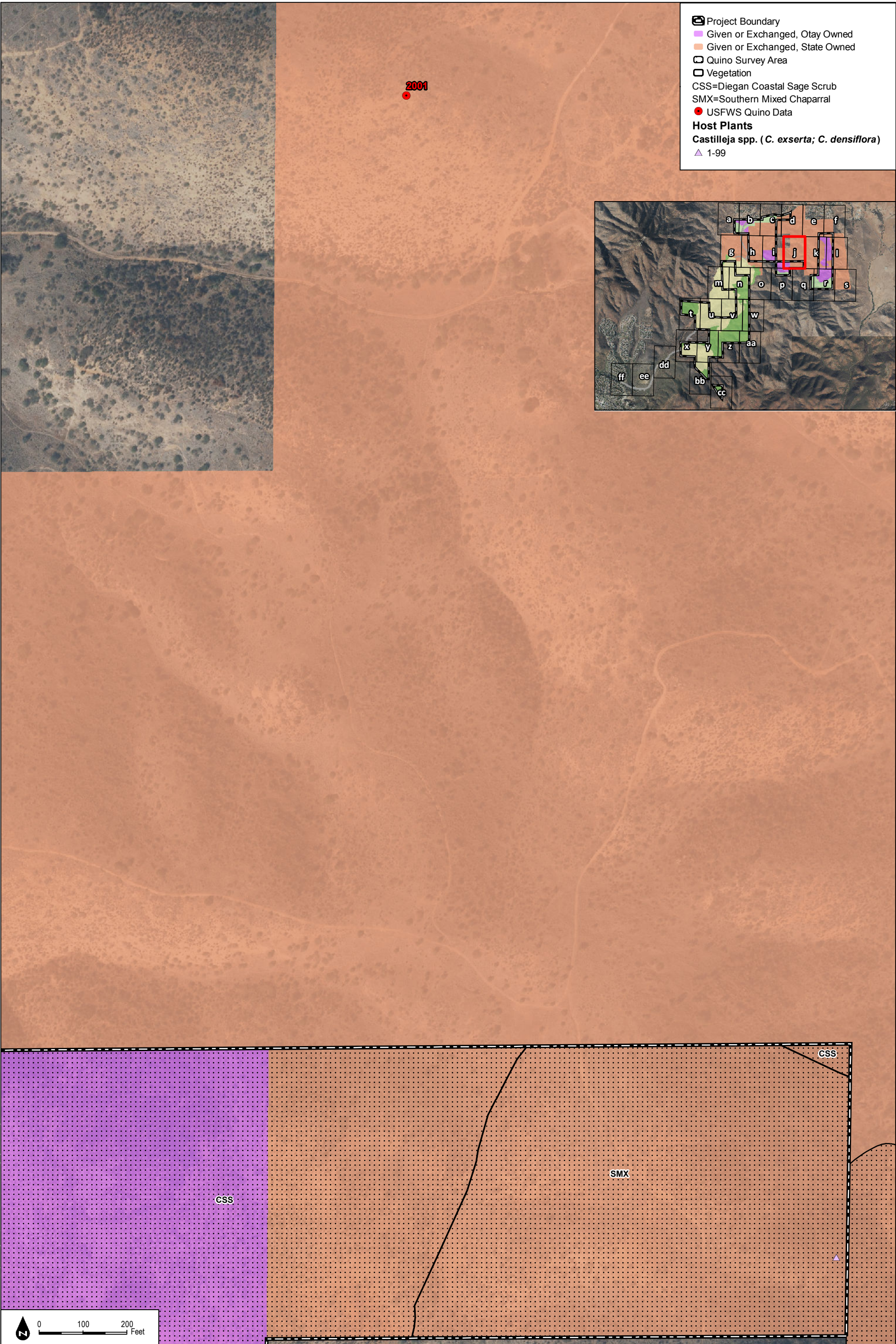


Figure 4-2i
2016 Quino Host Plant Mapping and Historical Locations

INTENTIONALLY LEFT BLANK



INTENTIONALLY LEFT BLANK

Project Boundary

Given or Exchanged, Otay Owned

Given or Exchanged, State Owned

Quino Survey Area

Vegetation

CSS=Diegan Coastal Sage Scrub

Host Plants

Castilleja spp. (*C. exserta*; *C. densiflora*)

1-99

Plantago erecta

1-99

DUDEK

SOURCE: SanGIS 2014, Hunsacker 2017, HELIX 2016

2016 Quino Host Plant Mapping and Historical Locations

Figure 4-2k

2016 Quino Host Plant Mapping and Historical Locations

Otay Ranch Village 14 and Planning Area 16/19 - Land Exchange Alternative

INTENTIONALLY LEFT BLANK