

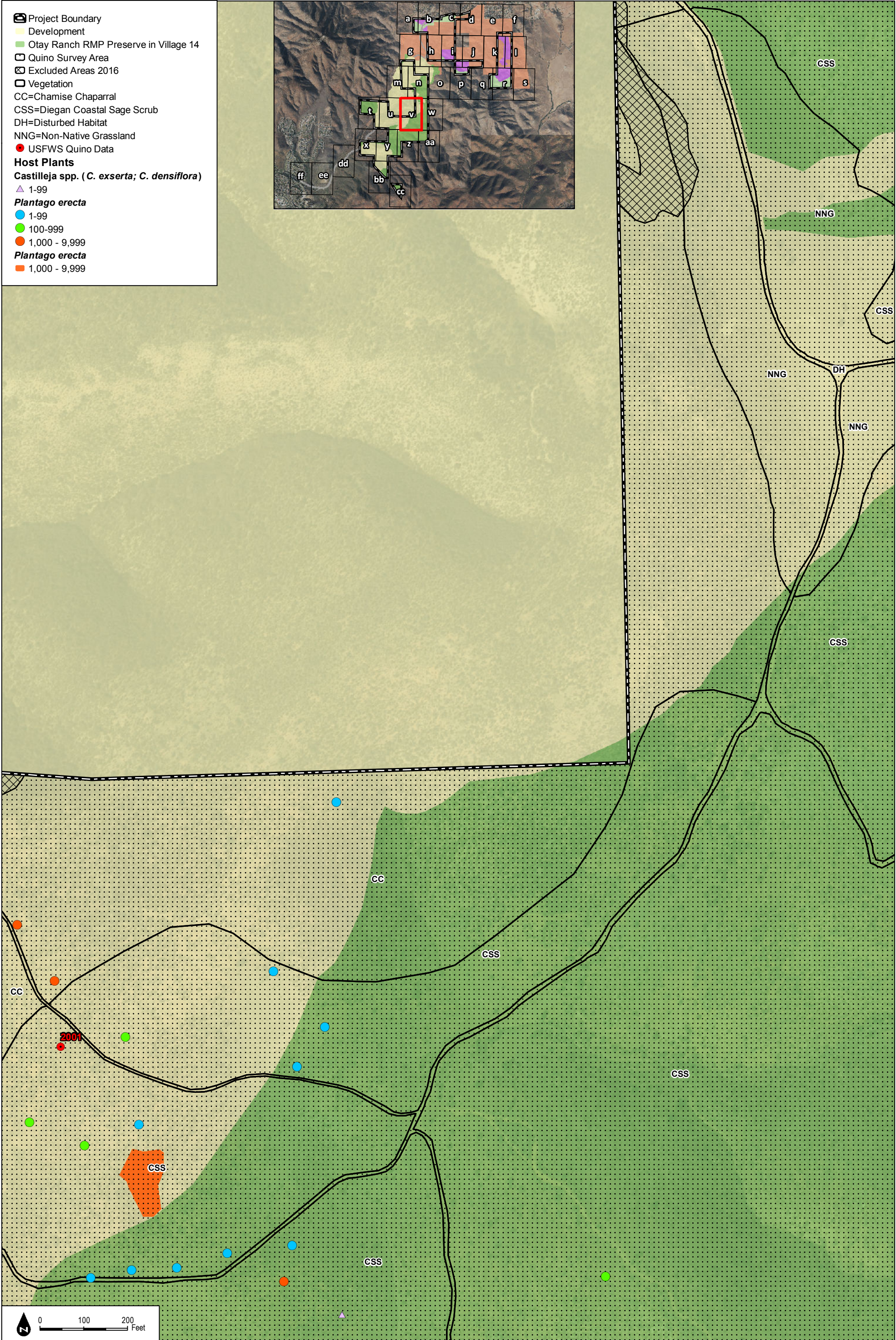
SOURCE: SanGIS 2014, Hunsacker 2017, HELIX 2016

DUDEK

Otay Ranch Village 14 and Planning Area 16/19 - Land Exchange Alternative

Figure 4-2u
2016 Quino Host Plant Mapping and Historical Locations

INTENTIONALLY LEFT BLANK



SOURCE: SanGIS 2014, Hunsacker 2017, HELIX 2016

DUDEK

Otay Ranch Village 14 and Planning Area 16/19 - Land Exchange Alternative

Figure 4-2v
2016 Quino Host Plant Mapping and Historical Locations

INTENTIONALLY LEFT BLANK

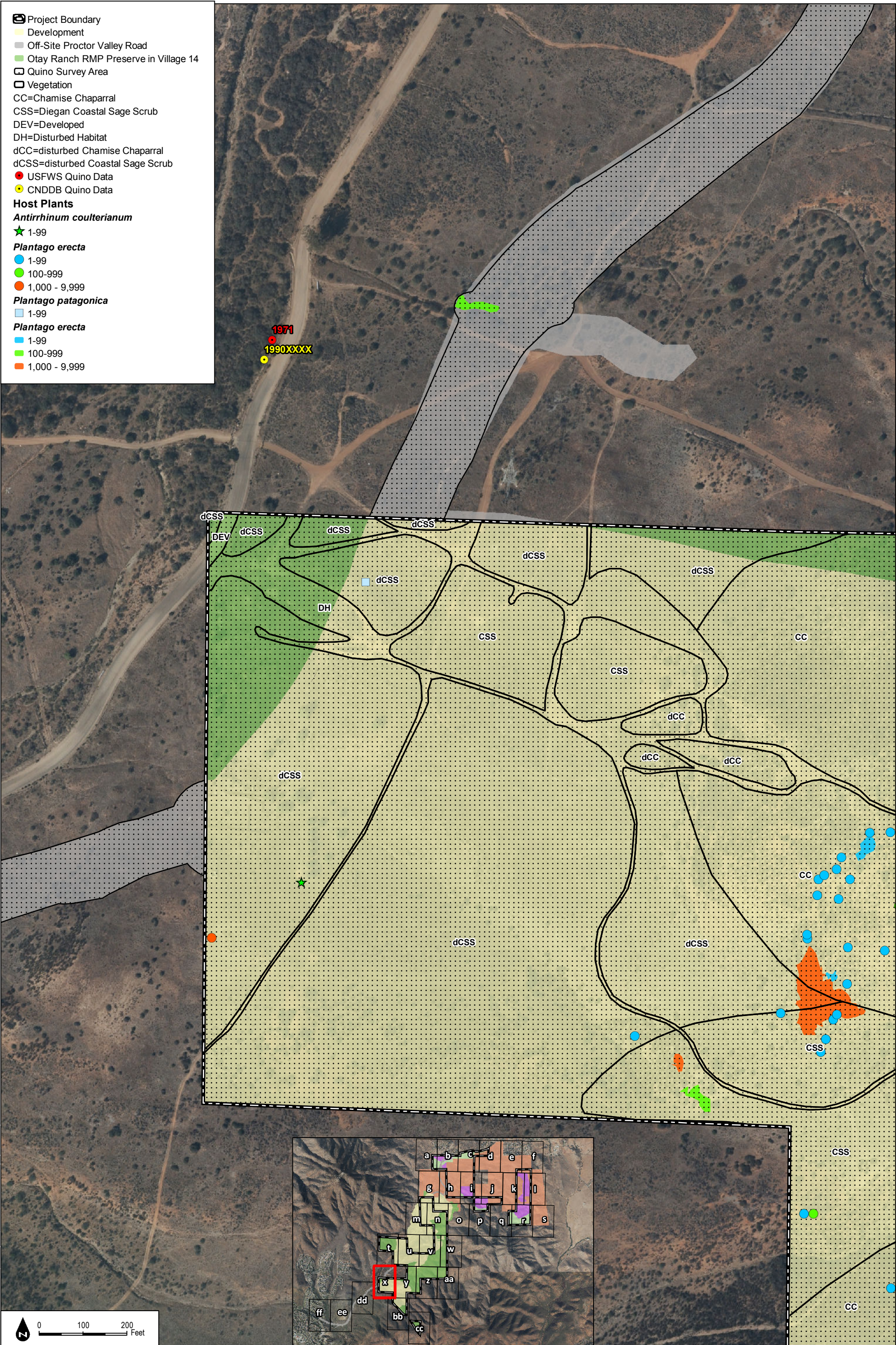


Figure 4-2w
2016 Quino Host Plant Mapping and Historical Locations

SOURCE: SanGIS 2014, Hunsacker 2017, HELIX 2016

Otay Ranch Village 14 and Planning Area 16/19 - Land Exchange Alternative

INTENTIONALLY LEFT BLANK

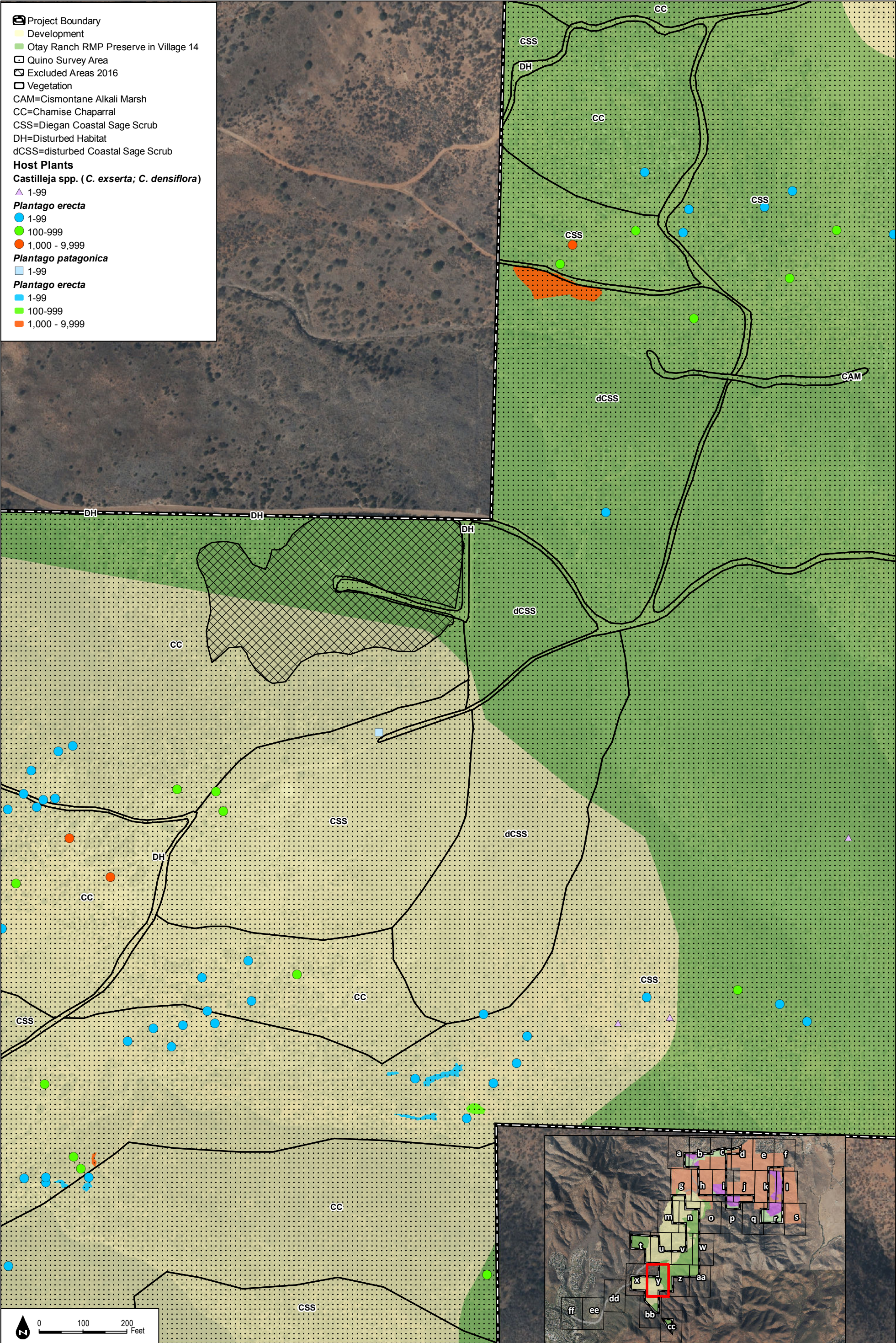


SOURCE: SanGIS 2014, Hunsacker 2017, HELIX 2016

Figure 4-2x
2016 Quino Host Plant Mapping and Historical Locations

Otay Ranch Village 14 and Planning Area 16/19 - Land Exchange Alternative

INTENTIONALLY LEFT BLANK

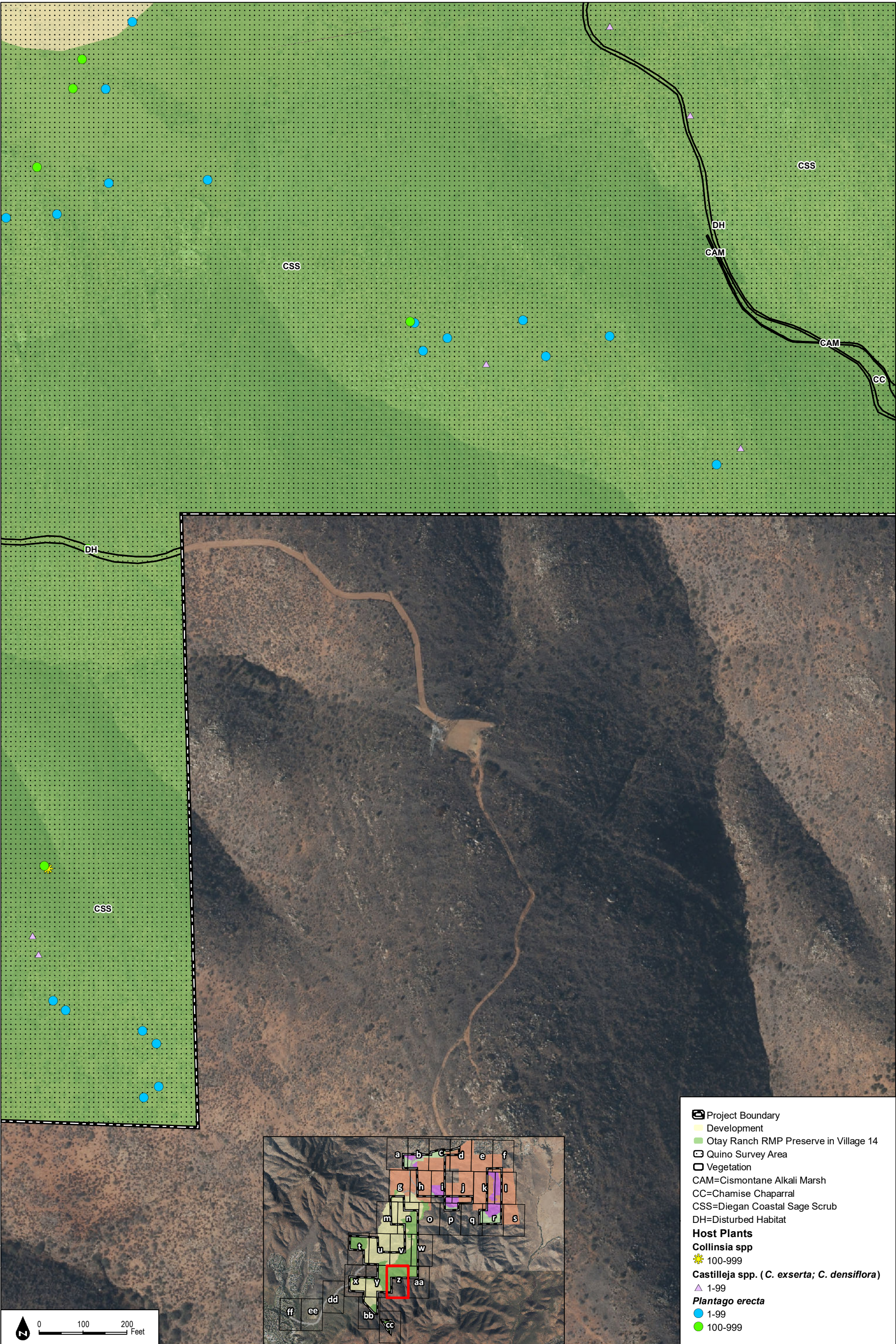


SOURCE: SanGIS 2014, Hunsacker 2017, HELIX 2016

2016 Quino Host Plant Mapping and Historical Locations

Otay Ranch Village 14 and Planning Area 16/19 - Land Exchange Alternative

INTENTIONALLY LEFT BLANK



SOURCE: SanGIS 2014, Hunsacker 2017, HELIX 2016

Figure 4-2z
2016 Quino Host Plant Mapping and Historical Locations

INTENTIONALLY LEFT BLANK



SOURCE: SanGIS 2014, Hunsacker 2017, HELIX 2016

DUDEK

Otay Ranch Village 14 and Planning Area 16/19 - Land Exchange Alternative

Figure 4-2aa
2016 Quino Host Plant Mapping and Historical Locations

INTENTIONALLY LEFT BLANK