

SOURCE: SanGIS 2014, Hunsacker 2017, HELIX 2016

DUDEK

Otay Ranch Village 14 and Planning Area 16/19 - Land Exchange Alternative

Figure 4-2bb
2016 Quino Host Plant Mapping and Historical Locations

INTENTIONALLY LEFT BLANK



INTENTIONALLY LEFT BLANK







SOURCE: SanGIS 2014, Hunsacker 2017, HELIX 2016

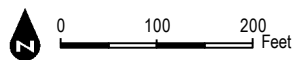
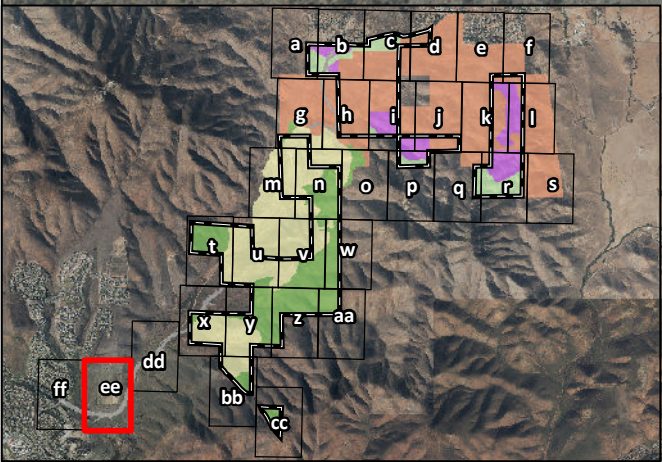
DUDEK

Otay Ranch Village 14 and Planning Area 16/19 - Land Exchange Alternative

Figure 4-2dd
2016 Quino Host Plant Mapping and Historical Locations

INTENTIONALLY LEFT BLANK

-  Project Boundary
-  Off-Site Proctor Valley Road
-  Quino Survey Area
-  CNDDDB Quino Data






DUDEK

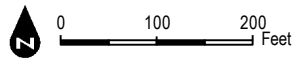
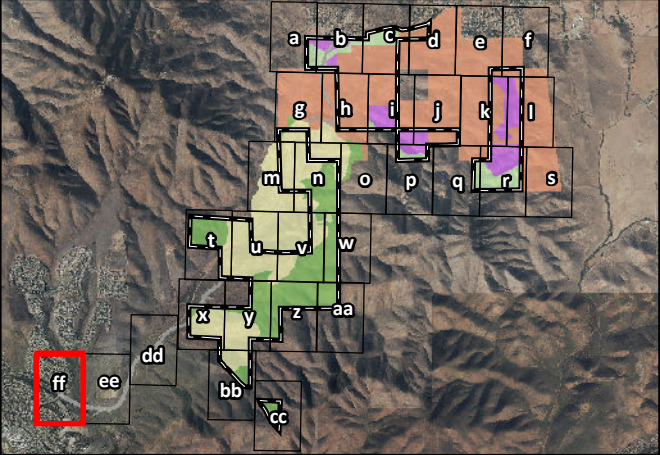
SOURCE: SanGIS 2014, Hunsacker 2017, HELIX 2016

Otay Ranch Village 14 and Planning Area 16/19 - Land Exchange Alternative

Figure 4-2ee
2016 Quino Host Plant Mapping and Historical Locations

INTENTIONALLY LEFT BLANK

-  Project Boundary
-  Off-Site Proctor Valley Road
-  Quino Survey Area



SOURCE: SanGIS 2014, Hunsacker 2017, HELIX 2016

DUDEK

Otay Ranch Village 14 and Planning Area 16/19 - Land Exchange Alternative

Figure 4-2ff
2016 Quino Host Plant Mapping and Historical Locations

INTENTIONALLY LEFT BLANK



INTENTIONALLY LEFT BLANK



SOURCE: SanGIS 2014, Hunsacker 2017, HELIX 2016

DUDEK

2015 Quino Host Plant Mapping, Potential Resource Areas, and Historical Locations

Figure 4-3b

Otay Ranch Village 14 and Planning Area 16/19 - Land Exchange Alternative

INTENTIONALLY LEFT BLANK

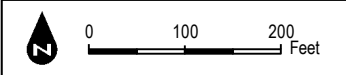


INTENTIONALLY LEFT BLANK

Property Boundary
Preserve
HELIX August 2015 Assessment
Potential Quino Resource Areas
*Includes both *Castilleja exserta* and *Castilleja densillera* species



INTENTIONALLY LEFT BLANK



INTENTIONALLY LEFT BLANK



INTENTIONALLY LEFT BLANK



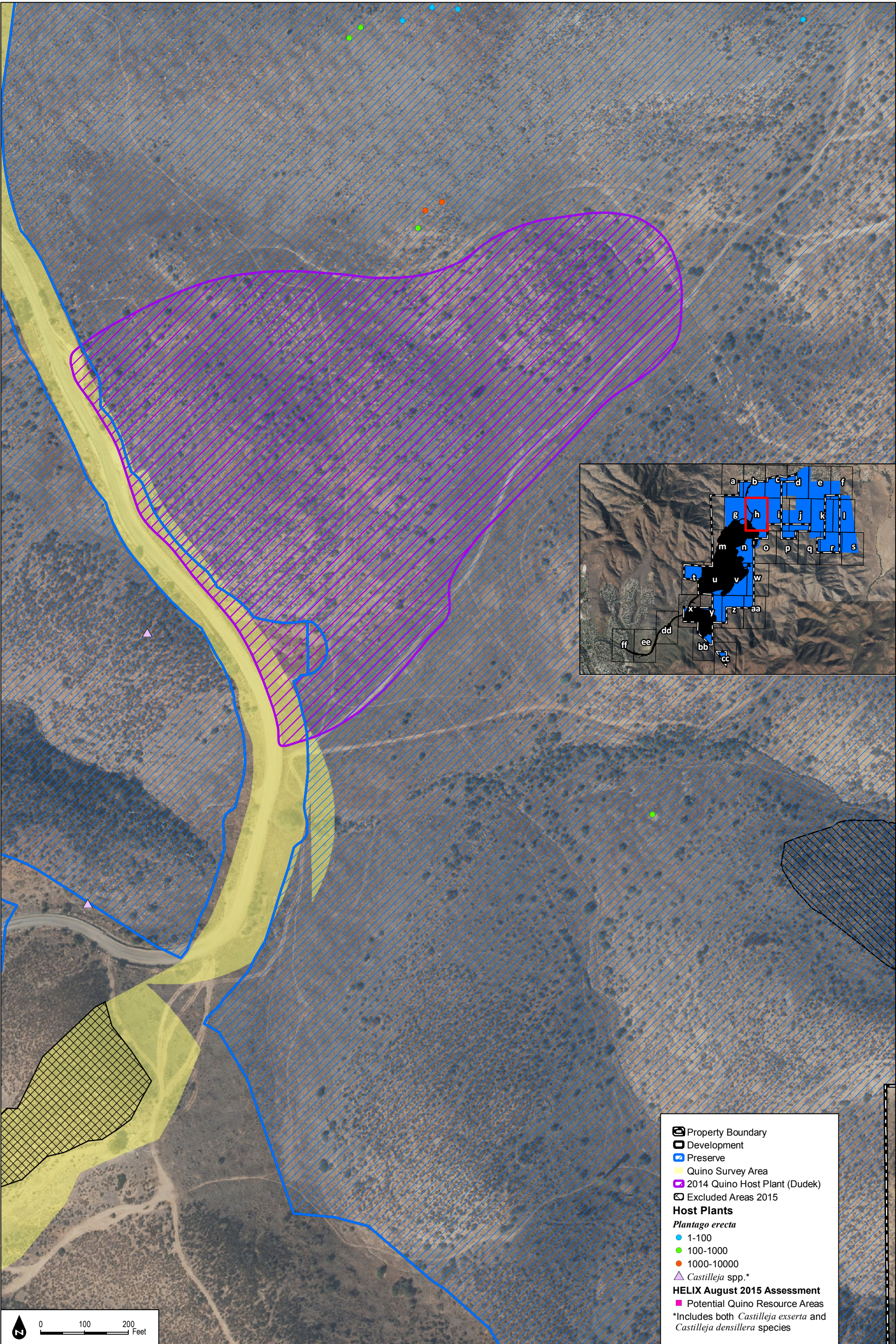
SOURCE: SanGIS 2014, Hunsacker 2017, HELIX 2016

DUDEK

Figure 4-3g
2015 Quino Host Plant Mapping, Potential Resource Areas, and Historical Locations

Otay Ranch Village 14 and Planning Area 16/19 - Land Exchange Alternative

INTENTIONALLY LEFT BLANK



0 100 200 Feet

DUDEK

SOURCE: SanGIS 2014, Hunsacker 2017, HELIX 2016

2015 Quino Host Plant Mapping, Potential Resource Areas, and Historical Locations

Otay Ranch Village 14 and Planning Area 16/19 - Land Exchange Alternative

Figure 4-3h

INTENTIONALLY LEFT BLANK