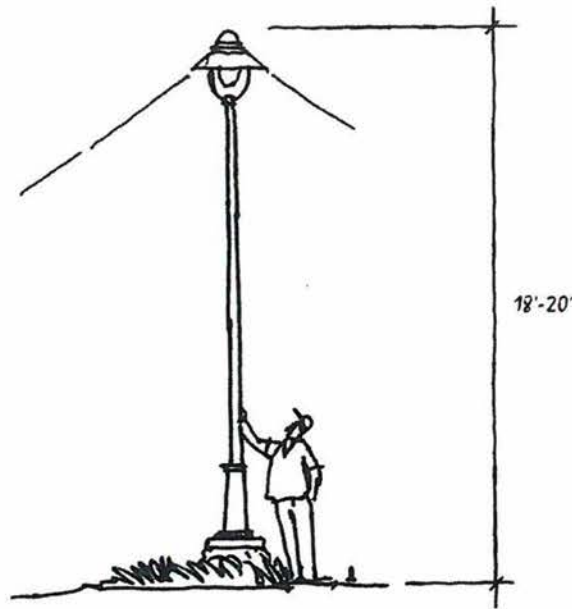


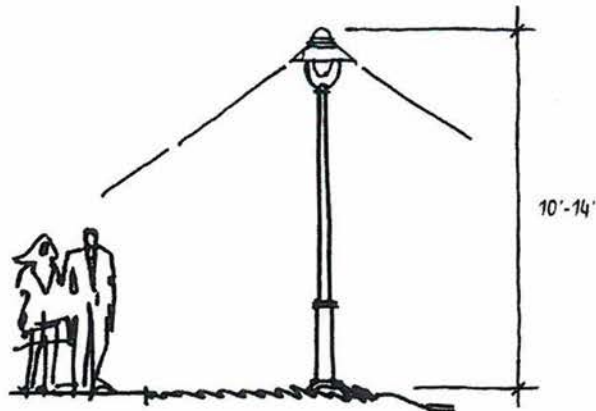
Lighting Plan

HARMONY GROVE VILLAGE SOUTH

Figure 1-21a



MAJOR STREET / INTERSECTIONS



INTERIOR STREETS

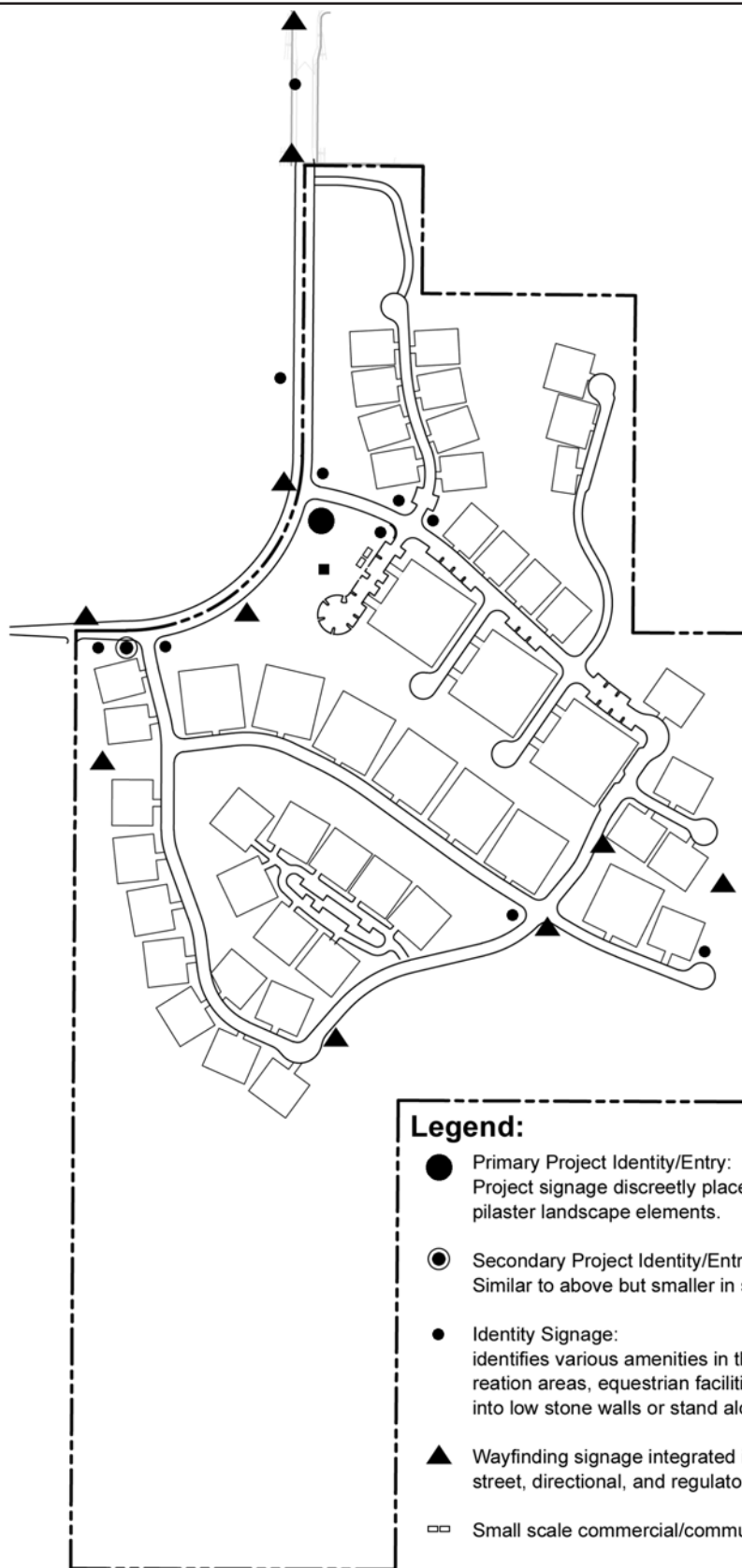
The lighting design for Harmony Grove Village South will be in keeping with the rural spirit of the project and adhere to the San Diego County Light Pollution Code commonly known as the "Dark Sky Ordinance."

Source: PDC 2016

Street Lighting

HARMONY GROVE VILLAGE SOUTH

Figure 1-21b



Legend:


- Primary Project Identity/Entry:
Project signage discreetly placed within low stone walls or pilaster landscape elements.
- Secondary Project Identity/Entry:
Similar to above but smaller in scale.
- Identity Signage:
identifies various amenities in the project such as parks, recreation areas, equestrian facilities, trail heads etc. Integrated into low stone walls or stand alone signs, small in scale.
- ▲ Wayfinding signage integrated into coordinated theme of street, directional, and regulatory signage.
- Small scale commercial/community center signage.
- Historical interpretation signage, as appropriate.

Source: PDC 2017

Potential Sign Locations

HARMONY GROVE VILLAGE SOUTH

Figure 1-22

 Property Boundary
County of San Diego

- 1 Plumosa Avenue TPM
- 2 Tourangeau TPM
- 3 Casa de Amparo
- 4 Rogers Estates
- 5 Matheson TPM
- 6 Easy Turf Storage Building
- 7 Rancho Verona
- 8 North County Environmental Resources Recycling Center
- 9 Knox TPM
- 10 T&R Mini Storage
- 11 Hooper TPM
- 12 Eaton TPM

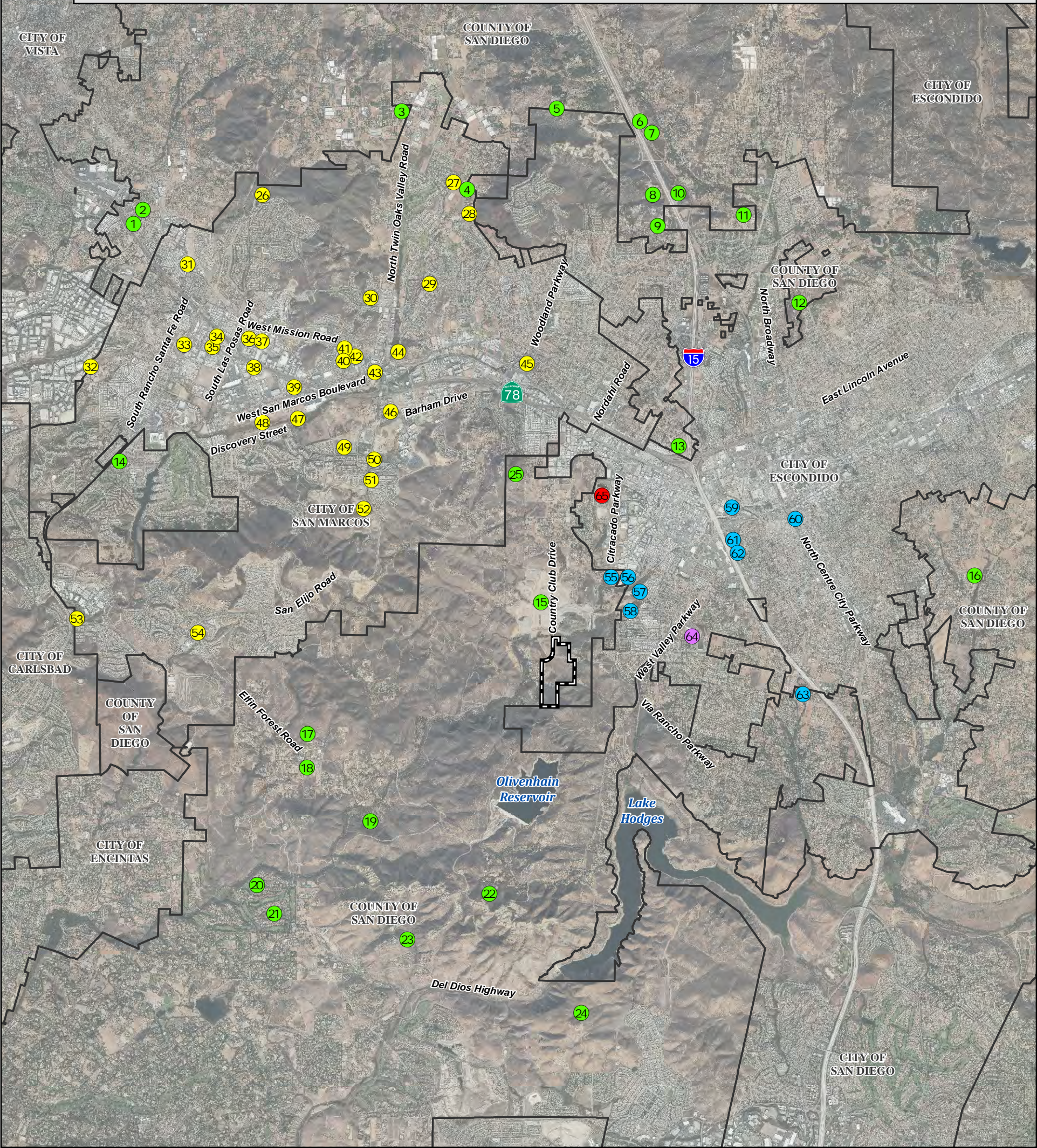
- 13 Montiel Heights/Montiel Road Townhouses
- 14 Lago de San Marcos Condominiums
- 15 Harmony Grove Village
- 16 Bear Valley Self-Storage
- 17 Anderson TM
- 18 Baumgartner TPM
- 19 Cielo del Norte
- 20 Santa Fe Creek
- 21 The Bridges at Rancho Santa Fe (formerly called Canyon Creek Country Club)
- 22 Lanzer TPM
- 23 Rancho Cielo
- 24 Shaw/Rancho Hills

- City of San Marcos**
- 25 Valiano Development
 - 26 San Marcos Highlands
 - 27 Kachay Homes
 - 28 Heritage Ranch
 - 29 UK Investments LLC
 - 30 Windy Point Development/ University of St. Augustine
 - 31 Rancho Santalina
 - 32 Nicholas Banche
 - 33 Shane Park Plaza
 - 34 Pacific Industrial No. 1
 - 35 Pacific Commercial
 - 36 Palomar Station (2)
 - 37 Davia Village

- 38 Sonic Drive In
- 39 East Gate
- 40 Parkview Apartments
- 41 Westlake Village
- 42 Richmar Specific Plan
- 43 Marketplace @ Twin Oaks
- 44 Citywide Channel Maintenance Programmatic Permit
- 45 Candra
- 46 University District Specific Plan
- 47 University Office and Medical Park
- 48 San Marcos Creek Specific Plan and Floodway Improvement Project

- 49 Kaiser Medical Office Building
 - 50 Leigh Hanson Site
 - 51 Campus Pointe II
 - 52 Rancho Coronado Phase I School Site
 - 53 University Commons/Old Creek Ranch Specific Plan
 - 54 San Elijo Hills Town Center
- City of Escondido**
- 55 Kenny Ray Harmony Grove
 - 56 Harmony Grove Industrial Park
 - 57 Hale Avenue Resource Recovery Facility (HARRF) Administration Building
 - 58 Citracado Parkway Extension

- 59 Escondido Asphalt Plant Expansion
 - 60 Citysquare Downtown Residential
 - 61 The Point
 - 62 Springhill Suites by Marriott
 - 63 Oak Creek
- Escondido Union High School District**
- 64 Citracado High School/Del Lago Academy
- Palomar Pomerado Healthcare District**
- 65 Escondido Research & Technology Center (ERTC)



Cumulative Projects

HARMONY GROVE VILLAGE SOUTH

Figure 1-23